



United States
Department of
Agriculture

National
Agricultural
Statistics
Service



Statistical
Bulletin
Number 944

Chickens and Eggs

Final Estimates 1994-97

USDA



Chickens and Eggs: Final Estimates by States and United States, 1994-97, U.S. Department of Agriculture, Agriculture Statistics Board, National Agricultural Statistics Service, Statistics Bulletin No. 944.

Procedures: Revisions were made after a through review of the original survey data and all additional data now available, including the 1997 Census of Agriculture. The 1994-97 estimates shown herein are considered final and will not be released again.

At the National level, revisions to estimates for all chickens and eggs were less than one percent.

U.S. Total Annual Egg Production				U.S. Annual Average Layers		
Year	From Millions	To Millions	Change %	From 1,000	To 1,000	Change %
1994	73,911	73,903	-	291,018	291,035	-
1995	74,591	74,764	0.2	293,854	294,350	0.2
1996	76,281	76,377	0.1	297,958	298,270	0.1
1997	77,401	77,532	0.2	303,166	303,604	0.1

Historic Estimates: Final estimates of Chickens and Eggs in earlier years are available in Statistical Bulletins No. 908 for 1988-93, No. 801 for 1984-87, No. 721 for 1980-83, No. 654 for 1976-79, No. 590 for 1970-75, No. 512 for 1965-69, No. 391 for 1960-64, No. 283 for 1955-59, and No. 183 for 1950-54.

Other Statistical Bulletins: The National Agricultural Statistics Service will issue a series of twenty bulletins in 1998-99 containing final estimates for agricultural commodities based on the review of the 1997 Census of Agriculture and other information. The product number, bulletin title, and tentative release dates are as follows.

NASS-SB944	Chickens and Eggs - Final Estimates 1994-97	12/10/98
NASS-SB945	Turkeys - Final Estimates 1994-97	12/17/98
NASS-SB947	Field Crops - Final Estimates 1992-97	12/18/98
NASS-SB948	Stocks of Grains, Oilseeds, and Hay - Final Estimates 1993-98	12/18/98
NASS-SB949	Rice Stocks - Final Estimates 1993-98	12/21/98
NASS-SB950	Noncitrus Fruits and Nuts - Final Estimates 1992-97	12/21/98
NASS-SB951	Hogs and Pigs - Final Estimates 1993-97	12/22/98
NASS-SB946	Vegetables - Final Estimates 1992-97	01/11/99
NASS-SB952	Milk Cows and Production - Final Estimates 1993-97	01/19/99
NASS-SB953	Cattle - Final Estimates 1994-98	01/19/99
NASS-SB954	Sheep and Goats - Final Estimates 1994-98	01/19/99
NASS-SB955	Farms and Land in Farms - Final Estimates 1993-97	01/19/99
NASS-SB956	Honey - Final Estimates 1993-97	02/09/99
NASS-SB957	Agricultural Land Values - Final Estimates 1994-98	03/12/99
NASS-SB958	Poultry Production and Value - Final Estimates 1994-97	03/15/99
NASS-SB959	Meat Animals, PDI - Final Estimates 1993-97	05/21/99
NASS-SB960	Milk Disposition and Income - Final Estimates 1993-97	05/21/99
NASS-SB961	Citrus Fruits - Final Estimates 1992-97	Aug. 99
NASS-SB962	Potatoes and Sweet Potatoes - Final Estimates 1992-97	Aug. 99
NASS-SB963	Crop Values - Final Estimates 1992-97	Oct. 99

Electronic Publications: These bulletins will be available **FREE OF CHARGE** on the Internet from the NASS Home Page at: <http://www.usda.gov/nass/>, in either text or PDF format. From the Homepage select "Historic Data," then "Statistical Bulletins."

Internet Published Estimates Data Base: Selected historical State and U.S. information is now available in an online data base via the Internet **free of charge**. County information will be available by mid 1999. The database allows custom extracts based on commodity, year, state and other selection criteria and produces an output file compatible for updating databases and spreadsheets. The database can be accessed from the NASS Home Page at: <http://www.usda.gov/nass/>.

Printed Copies: Printed copies of the bulletins may be ordered by calling the Sales Order Desk toll free at 1-800-999-6779. Costs for printed copies of the publications range from \$15.00 to \$20.00. Visa, MasterCard, check, or money order are acceptable for payment.

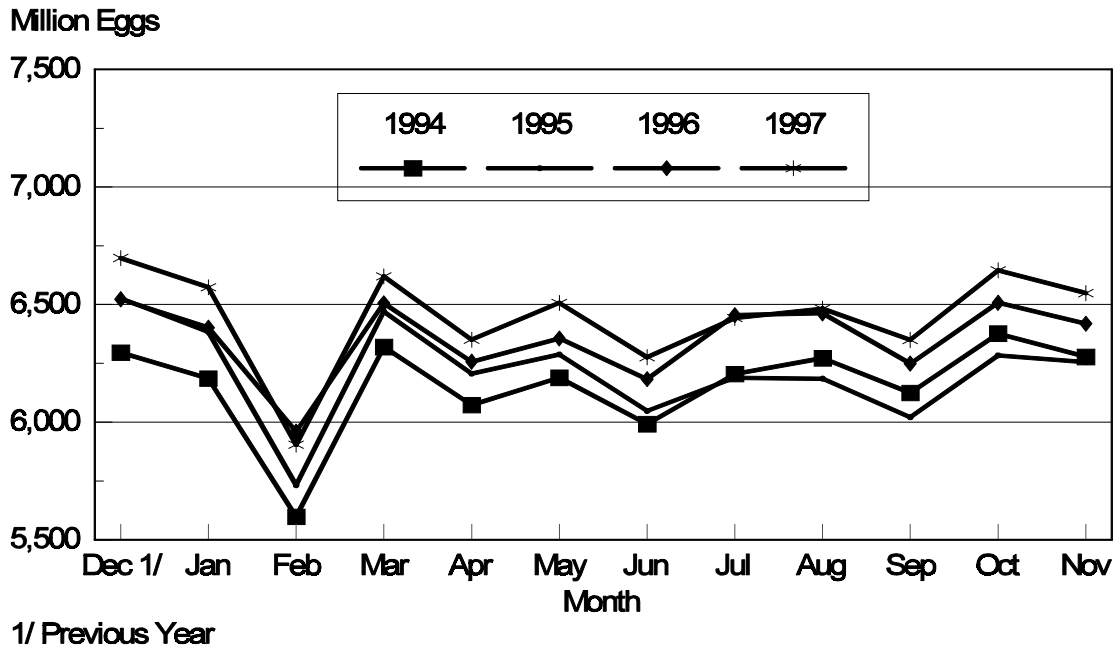
Agricultural Census Publications: The Volume 1, Geographic Area Series publication containing the United States Summary provides National data and selected data for each State. Separate State reports present statistics for the entire State and each county. Census reports cover the 1997 production year, with comparative data for earlier census years. The 1997 Census of Agriculture Geographic Area Series products, including all manipulable data files and Adobe Acrobat (PDF) files of the printed reports, will be available on March 20, 1999 via the Internet at <http://www.usda.gov/nass/>. The information is also available on CD-ROM, and in printed publications. Printed copies of the Census publications and CD-ROM's may be ordered by calling the Sales Order Desk toll free at 1-800-999-6779.

Assistance: For more information pertaining to this bulletin, call the Livestock and Economics Branch at (202) 720-3570. For assistance with general agricultural statistics or further information about NASS or its products and services, contact the **Agricultural Statistics Hotline** at **1-800-727-9540**, 7:30 a.m. to 4:00 p.m. ET, or e-mail: nass@nass.usda.gov.

The United States Department of Agriculture (USDA) prohibits discrimination in all its programs on the basis of race, color, national origin, gender, religion, age, disability, political beliefs, sexual orientation, and marital or family status. (Not all prohibited bases apply to all programs.) Persons with disabilities who require alternative means for communication of program information (braille, large print, audiotape, etc.) should contact the USDA's TARGET Center at 202-720-2600 (voice and TDD).

To file a complaint of discrimination, write USDA, Director, Office of Civil Rights, Room 326-W, Whitten Building, 1400 Independence Avenue, SW, Washington, D.C., 20250-9410, or call 202-720-5964 (voice or TDD). USDA is an equal opportunity provider and employer.

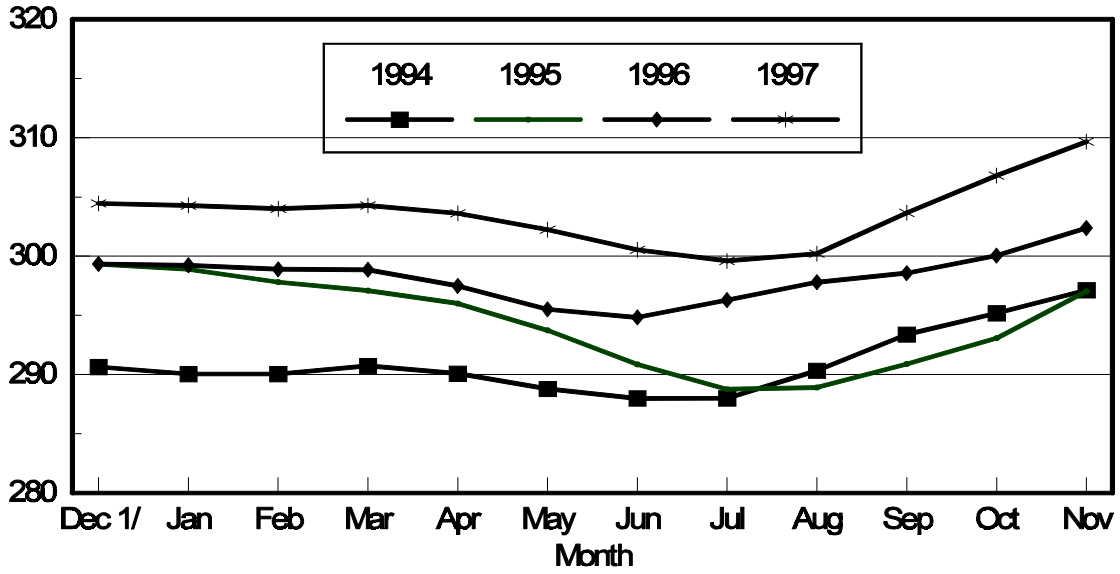
All Egg Production By Months United States, 1994 - 1997



Average Number of All Layers

United States , 1994 - 1997

Million Layers



1/ Previous Year

**Chickens: Number, Value per Head, Total Value,
and Class, United States, December 1, 1994-97¹**

Year	All Chickens			Layers		
	Number (000)	Value		1 Year Old and Older	20 Weeks Old But Less Than 1 Year	Total
		Per Head	Total (000)			
		<i>Dollars</i>	<i>Dollars</i>	<i>1,000</i>	<i>1,000</i>	<i>1,000</i>
1994	385,747	2.34	902,815	135,093	163,432	298,525
1995	388,077	2.41	934,905	133,841	165,230	299,071
1996	392,737	2.65	1,039,071	138,048	165,874	303,922
1997	410,030	2.72	1,113,183	140,966	171,171	312,137
	Pullets and Pullet Chicks Not Laying Age			Other Chickens		
	13 Weeks Old & Older But Less Than 20 Weeks		Under 13 Weeks Old			
	<i>1,000</i>		<i>1,000</i>	<i>1,000</i>		
1994		33,159		46,694		7,369
1995		34,004		47,365		7,637
1996		33,518		48,054		7,243
1997		35,578		54,766		7,549

¹ Excludes commercial broilers.

**All Layers and Egg Production: Annual Average Number of Layers and Annual
Egg Production by Type, United States, 1994-97¹**

Year	Annual Average Number of Layers	Egg Production		
		Total Eggs	Table Eggs	Hatching Eggs
	<i>1,000</i>	<i>Millions</i>	<i>Millions</i>	<i>Millions</i>
1994	291,035	73,903	63,023	10,880
1995	294,350	74,764	63,426	11,338
1996	298,270	76,377	64,805	11,572
1997	303,604	77,532	65,488	12,044

¹ Estimates cover the 12-month period Dec 1, previous year, through Nov 30.

All Layers and Egg Production: Annual Average Number of Layers, Eggs per Layer, and Total Egg Production by State and United States, 1994-95¹

State	Average Number of Layers		Eggs per Layer ²		Total Egg Production	
	1994	1995	1994	1995	1994	1995
	<i>1,000</i>	<i>1,000</i>	<i>Number</i>	<i>Number</i>	<i>Million Eggs</i>	<i>Million Eggs</i>
AL	11,542	11,562	237	234	2,733	2,703
AR	16,852	15,982	226	226	3,803	3,608
CA	25,995	25,312	254	255	6,602	6,444
CO	3,207	3,149	243	256	778	805
CT	3,686	3,577	264	264	972	944
FL	9,746	9,127	260	261	2,538	2,383
GA	18,606	18,000	244	243	4,543	4,376
HI	823	777	237	239	195	186
IL	2,957	2,854	260	267	768	762
IN	21,014	21,051	259	261	5,452	5,496
IA	14,686	16,717	259	258	3,808	4,318
ME	5,059	4,946	277	276	1,403	1,364
MD	3,231	3,724	264	269	852	1,002
MI	5,345	5,256	268	264	1,435	1,388
MN	10,399	10,990	257	257	2,669	2,823
MS	6,413	6,180	236	233	1,513	1,443
MO	6,727	6,711	255	254	1,713	1,705
NE	8,066	8,972	251	263	2,027	2,359
NY	3,784	3,862	277	277	1,049	1,071
NC	13,881	13,834	232	228	3,214	3,152
OH	20,911	22,168	270	269	5,644	5,964
OK	3,600	3,752	222	239	799	897
OR	2,640	2,613	268	271	708	709
PA	20,755	21,743	270	268	5,597	5,835
SC	5,021	4,918	264	262	1,326	1,289
SD	1,994	1,999	263	268	525	535
TX	15,577	15,914	248	246	3,860	3,922
VA	3,833	3,821	245	240	940	916
WA	5,013	5,373	273	271	1,371	1,455
WI	3,396	3,304	260	257	883	849
30 Sts ⁴	274,760	278,188	254	254	69,716	70,703
DE	614	581	248	238	152	138
ID	958	904	266	266	255	240
KS	1,334	1,279	264	254	352	325
KY	2,635	2,677	258	254	680	679
LA	1,810	1,942	244	243	442	472
MA	777	513	266	259	207	133
MT	374	371	265	283	99	105
NH	158	157	247	280	39	44
NJ	1,651	1,782	273	249	451	444
NM	1,142	1,127	264	269	301	303
ND	204	169	250	278	51	47
RI	196	141	286	241	56	34
TN	1,024	1,052	250	241	256	254
UT	1,885	1,950	260	263	491	513
VT	83	91	330	284	27	26
WV	1,107	1,100	226	217	250	239
WY	16	15	175	160	2.8	2.4
Oth Sts ³	308	313	273	227	84	71
US ⁴	291,035	294,350	254	254	73,903	74,764

¹ Annual estimates cover the period Dec 1, previous year thru Nov 30.

² Total egg production divided by average number of layers on hand.

³ AK, AZ and NV combined to avoid disclosure of individual operation.

⁴ Sum of States may not add to U.S. total due to rounding.

All Layers and Egg Production: Annual Average Number of Layers, Eggs per Layer, and Total Egg Production by State and United States, 1996-97¹

State	Average Number of Layers		Eggs per Layer ²		Total Egg Production	
	1996	1997	1996	1997	1996	1997
	<i>1,000</i>	<i>1,000</i>	<i>Number</i>	<i>Number</i>	<i>Million Eggs</i>	<i>Million Eggs</i>
AL	10,646	10,749	233	232	2,481	2,499
AR	15,153	14,519	227	221	3,433	3,215
CA	25,292	25,632	260	260	6,569	6,663
CO	3,229	3,322	256	258	827	857
CT	3,556	3,389	267	271	950	917
FL	9,662	9,865	259	253	2,502	2,499
GA	18,626	19,869	246	245	4,584	4,867
HI	754	724	239	238	180	172
IL	3,237	3,157	279	266	902	841
IN	21,433	21,138	264	267	5,663	5,652
IA	19,066	21,187	264	261	5,023	5,527
ME	5,028	5,026	288	285	1,449	1,434
MD	3,629	3,362	258	262	938	882
MI	5,013	5,073	263	262	1,318	1,327
MN	11,942	11,712	258	252	3,087	2,957
MS	6,456	6,690	236	231	1,523	1,547
MO	6,644	6,693	252	257	1,674	1,719
NE	9,103	9,525	257	259	2,341	2,469
NY	3,773	3,382	276	275	1,042	931
NC	13,107	12,240	228	228	2,994	2,794
OH	24,058	25,929	270	269	6,502	6,976
OK	3,845	3,840	238	235	916	901
OR	2,701	2,938	274	267	741	783
PA	21,212	21,671	270	272	5,720	5,900
SC	4,707	4,753	260	258	1,224	1,228
SD	2,017	2,065	265	262	534	542
TX	16,109	16,830	247	249	3,986	4,186
VA	3,667	3,483	242	231	888	806
WA	5,162	5,051	274	273	1,412	1,379
WI	3,407	3,711	263	269	896	998
30 Sts ⁴	282,234	287,525	256	256	72,298	73,469
DE	592	471	248	238	147	112
ID	955	903	272	261	260	236
KS	1,239	1,212	254	266	315	323
KY	2,702	2,847	246	249	664	710
LA	1,941	1,894	246	243	477	460
MA	512	540	277	289	142	156
MT	378	294	286	299	108	88
NH	153	148	275	311	42	46
NJ	1,799	1,856	264	249	475	463
NM	1,125	1,141	272	265	306	302
ND	197	208	279	236	55	49
RI	153	90	281	267	43	24
TN	1,051	1,080	245	236	257	255
UT	1,746	1,819	266	266	464	483
VT	117	186	289	300	34	56
WV	1,046	1,081	217	227	227	245
WY	15	12	160	292	2.4	3.5
Oth Sts ³	314	296	220	207	69	61
US ⁴	298,270	303,604	256	255	76,377	77,532

¹ Annual estimates cover the period Dec 1, previous year thru Nov 30.

² Total egg production divided by average number of layers on hand.

³ AK, AZ and NV combined to avoid disclosure of individual operation.

⁴ Sum of States may not add to U.S. total due to rounding.

**Eggs: Annual Number of Eggs Produced by Type,
State, and United States, 1994-95**

State	Total		Table Egg Type ¹		All Hatching Type ¹	
	1994	1995	1994	1995	1994	1995
	<i>Million Eggs</i>	<i>Million Eggs</i>	<i>Million Eggs</i>	<i>Million Eggs</i>	<i>Million Eggs</i>	<i>Million Eggs</i>
AL	2,733	2,703	1,341	1,230	1,392	1,473
AR	3,803	3,608	1,774	1,481	2,029	2,127
CA	6,602	6,444				
CO	778	805				
CT	972	944				
FL	2,538	2,383	2,354	2,250	184	133
GA	4,543	4,376	2,830	2,645	1,713	1,731
HI	195	186	195	186	0	0
IL	768	762	755	747	13	15
IN	5,452	5,496	5,327	5,379	125	117
IA	3,808	4,318				
ME	1,403	1,364				
MD	852	1,002	754	902	98	100
MI	1,435	1,388				
MN	2,669	2,823	2,560	2,709	109	114
MS	1,513	1,443	682	614	831	829
MO	1,713	1,705				
NE	2,027	2,359	2,027	2,359	0	0
NY	1,049	1,071				
NC	3,214	3,152	1,771	1,646	1,443	1,506
OH	5,644	5,964				
OK	799	897	515	570	284	327
OR	708	709	686	686	22	23
PA	5,597	5,835	5,409	5,637	188	198
SC	1,326	1,289	1,108	1,068	218	221
SD	525	535	525	535	0	0
TX	3,860	3,922				
VA	940	916	472	459	468	457
WA	1,371	1,455				
WI	883	849				
30 Sts	69,716	70,703	59,535	60,127	10,181	10,576
DE	152	138				
ID	255	240				
KS	352	325				
KY	680	679				
LA	442	472				
MA	207	133				
MT	99	105				
NH	39	44				
NJ	451	444				
NM	301	303				
ND	51	47				
RI	56	34				
TN	256	254				
UT	491	513				
VT	27	26				
WV	250	239				
WY	2.8	2.4				
Oth Sts ²	84	71				
US	73,903	74,764	63,023	63,426	10,880	11,338

¹ Data by type of flock not shown for some States to avoid disclosing individual operations.

² AK, AZ and NV combined to avoid disclosure of individual operations.

**Eggs: Annual Number of Eggs Produced by Type,
State, and United States, 1996-97**

State	Total		Table Egg Type ¹		All Hatching Type ¹	
	1996	1997	1996	1997	1996	1997
	<i>Million Eggs</i>	<i>Million Eggs</i>	<i>Million Eggs</i>	<i>Million Eggs</i>	<i>Million Eggs</i>	<i>Million Eggs</i>
AL	2,481	2,499	1,085	1,091	1,396	1,408
AR	3,433	3,215	1,311	1,071	2,122	2,144
CA	6,569	6,663				
CO	827	857				
CT	950	917				
FL	2,502	2,499	2,353	2,344	149	155
GA	4,584	4,867	2,767	2,908	1,817	1,959
HI	180	172	180	172	0	0
IL	902	841	890	816	12	25
IN	5,663	5,652	5,551	5,534	112	118
IA	5,023	5,527				
ME	1,449	1,434				
MD	938	882	850	800	88	82
MI	1,318	1,327				
MN	3,087	2,957	2,963	2,835	124	122
MS	1,523	1,547	597	501	926	1,046
MO	1,674	1,719				
NE	2,341	2,469	2,341	2,469	0	0
NY	1,042	931				
NC	2,994	2,794	1,488	1,258	1,506	1,536
OH	6,502	6,976				
OK	916	901	555	528	361	373
OR	741	783	719	767	22	16
PA	5,720	5,900	5,532	5,717	188	183
SC	1,224	1,228	1,007	1,008	217	220
SD	534	542	534	542	0	0
TX	3,986	4,186				
VA	888	806	429	392	459	414
WA	1,412	1,379				
WI	896	998				
30 Sts	72,298	73,469	61,506	62,241	10,792	11,228
DE	147	112				
ID	260	236				
KS	315	323				
KY	664	710				
LA	477	460				
MA	142	156				
MT	108	88				
NH	42	46				
NJ	475	463				
NM	306	302				
ND	55	49				
RI	43	24				
TN	257	255				
UT	464	483				
VT	34	56				
WV	227	245				
WY	2.4	3.5				
Oth Sts ²	69	61				
US	76,377	77,532	64,805	65,488	11,572	12,044

¹ Data by type of flock not shown for some States to avoid disclosing individual operations.

² AK, AZ and NV combined to avoid disclosure of individual operations.

Eggs: Production During the Month by Type, United States, 1994-95

Month	Total		Table Egg Type		All Hatching Type	
	1994	1995	1994	1995	1994	1995
	<i>Million Eggs</i>	<i>Million Eggs</i>	<i>Million Eggs</i>	<i>Million Eggs</i>	<i>Million Eggs</i>	<i>Million Eggs</i>
Dec ¹	6,295	6,536	5,407	5,584	888	952
Jan	6,185	6,399	5,292	5,443	893	956
Feb	5,597	5,747	4,774	4,884	823	863
Mar	6,320	6,488	5,404	5,530	916	958
Apr	6,072	6,223	5,176	5,283	896	940
May	6,188	6,305	5,248	5,326	940	979
Jun	5,991	6,065	5,084	5,115	907	950
Jul	6,204	6,206	5,268	5,240	936	966
Aug	6,272	6,202	5,336	5,246	936	956
Sep	6,125	6,033	5,218	5,106	907	927
Oct	6,377	6,297	5,445	5,338	932	959
Nov	6,277	6,263	5,371	5,331	906	932
During Year	73,903	74,764	63,023	63,426	10,880	11,338

¹ December preceding year.

**Hatching Type Eggs: Production During the Month
by Type, United States, 1994-95**

Month	All Hatching Type		Broiler Type		Egg Type	
	1994	1995	1994	1995	1994	1995
	<i>Million Eggs</i>	<i>Million Eggs</i>	<i>Million Eggs</i>	<i>Million Eggs</i>	<i>Million Eggs</i>	<i>Million Eggs</i>
Dec ¹	888	952	828	888	60	64
Jan	893	956	832	891	61	65
Feb	823	863	764	803	59	60
Mar	916	958	853	892	63	66
Apr	896	940	836	874	60	66
May	940	979	877	914	63	65
Jun	907	950	846	891	61	59
Jul	936	966	876	904	60	62
Aug	936	956	876	891	60	65
Sep	907	927	849	867	58	60
Oct	932	959	872	897	60	62
Nov	906	932	847	876	59	56
During Year	10,880	11,338	10,156	10,588	724	750

¹ December preceding year.

Eggs: Production During the Month by Type, United States, 1996-97

Month	Total		Table Egg Type		All Hatching Type	
	1996	1997	1996	1997	1996	1997
	<i>Million Eggs</i>	<i>Million Eggs</i>	<i>Million Eggs</i>	<i>Million Eggs</i>	<i>Million Eggs</i>	<i>Million Eggs</i>
Dec ¹	6,541	6,696	5,565	5,706	976	990
Jan	6,409	6,577	5,431	5,577	978	1,000
Feb	5,970	5,909	5,049	4,997	921	912
Mar	6,511	6,625	5,523	5,595	988	1,030
Apr	6,264	6,355	5,309	5,350	955	1,005
May	6,361	6,519	5,367	5,475	994	1,044
Jun	6,188	6,292	5,229	5,285	959	1,007
Jul	6,462	6,457	5,478	5,434	984	1,023
Aug	6,471	6,500	5,487	5,489	984	1,011
Sep	6,257	6,366	5,319	5,374	938	992
Oct	6,518	6,664	5,561	5,630	957	1,034
Nov	6,425	6,572	5,487	5,576	938	996
During Year	76,377	77,532	64,805	65,488	11,572	12,044

¹ December preceding year.

**Hatching Type Eggs: Production During the Month
by Type, United States, 1996-97**

Month	All Hatching Type		Broiler Type		Egg Type	
	1996	1997	1996	1997	1996	1997
	<i>Million Eggs</i>	<i>Million Eggs</i>	<i>Million Eggs</i>	<i>Million Eggs</i>	<i>Million Eggs</i>	<i>Million Eggs</i>
Dec ¹	976	990	920	928	56	62
Jan	978	1,000	919	937	59	63
Feb	921	912	862	855	59	57
Mar	988	1,030	924	966	64	64
Apr	955	1,005	893	944	62	61
May	994	1,044	931	980	63	64
Jun	959	1,007	900	948	59	59
Jul	984	1,023	923	965	61	58
Aug	984	1,011	925	954	59	57
Sep	938	992	882	934	56	58
Oct	957	1,034	898	974	59	60
Nov	938	996	879	939	59	57
During Year	11,572	12,044	10,856	11,324	716	720

¹ December preceding year.

Eggs: Production During the Month by Type, 30 Selected States, 1994-95

Month	Total		Table Egg Type		All Hatching Type	
	1994	1995	1994	1995	1994	1995
	<i>Million Eggs</i>	<i>Million Eggs</i>	<i>Million Eggs</i>	<i>Million Eggs</i>	<i>Million Eggs</i>	<i>Million Eggs</i>
Dec ¹	5,936	6,174	5,107	5,286	829	888
Jan	5,836	6,048	4,999	5,152	837	896
Feb	5,284	5,427	4,510	4,620	774	807
Mar	5,968	6,126	5,108	5,230	860	896
Apr	5,729	5,883	4,891	5,004	838	879
May	5,835	5,960	4,955	5,050	880	910
Jun	5,648	5,737	4,799	4,852	849	885
Jul	5,849	5,875	4,974	4,974	875	901
Aug	5,911	5,871	5,035	4,982	876	889
Sep	5,779	5,717	4,930	4,854	849	863
Oct	6,019	5,961	5,149	5,067	870	894
Nov	5,922	5,924	5,078	5,056	844	868
During Year	69,716	70,703	59,535	60,127	10,181	10,576

¹ December preceding year.

**Hatching Type Eggs: Production During the Month by Type,
30 Selected States, 1994-95**

Month	All Hatching Type		Broiler Type		Egg Type	
	1994	1995	1994	1995	1994	1995
	<i>Million Eggs</i>	<i>Million Eggs</i>	<i>Million Eggs</i>	<i>Million Eggs</i>	<i>Million Eggs</i>	<i>Million Eggs</i>
Dec ¹	829	888	772	827	57	61
Jan	837	896	779	832	58	64
Feb	774	807	718	748	56	59
Mar	860	896	800	831	60	65
Apr	838	879	781	814	57	65
May	880	910	820	847	60	63
Jun	849	885	791	827	58	58
Jul	875	901	818	841	57	60
Aug	876	889	818	827	58	62
Sep	849	863	792	806	57	57
Oct	870	894	813	834	57	60
Nov	844	868	788	814	56	54
During Year	10,181	10,576	9,490	9,848	691	728

¹ December preceding year.

Eggs: Production During the Month by Type, 30 Selected States, 1996-97

Month	Total		Table Egg Type		All Hatching Type	
	1996	1997	1996	1997	1996	1997
	<i>Million Eggs</i>	<i>Million Eggs</i>	<i>Million Eggs</i>	<i>Million Eggs</i>	<i>Million Eggs</i>	<i>Million Eggs</i>
Dec ¹	6,185	6,342	5,276	5,417	909	925
Jan	6,066	6,227	5,151	5,293	915	934
Feb	5,651	5,594	4,790	4,742	861	852
Mar	6,164	6,275	5,241	5,314	923	961
Apr	5,931	6,029	5,039	5,092	892	937
May	6,018	6,185	5,090	5,211	928	974
Jun	5,852	5,961	4,960	5,022	892	939
Jul	6,120	6,120	5,205	5,166	915	954
Aug	6,128	6,163	5,212	5,223	916	940
Sep	5,927	6,036	5,051	5,113	876	923
Oct	6,175	6,315	5,284	5,353	891	962
Nov	6,081	6,222	5,207	5,295	874	927
During Year	72,298	73,469	61,506	62,241	10,792	11,228

¹ December preceding year.

**Hatching Type Eggs: Production During the Month by Type,
30 Selected States, 1996-97**

Month	All Hatching Type		Broiler Type		Egg Type	
	1996	1997	1996	1997	1996	1997
	<i>Million Eggs</i>	<i>Million Eggs</i>	<i>Million Eggs</i>	<i>Million Eggs</i>	<i>Million Eggs</i>	<i>Million Eggs</i>
Dec ¹	909	925	855	865	54	60
Jan	915	934	857	873	58	61
Feb	861	852	803	797	58	55
Mar	923	961	861	900	62	61
Apr	892	937	832	879	60	58
May	928	974	867	913	61	61
Jun	892	939	835	882	57	57
Jul	915	954	856	898	59	56
Aug	916	940	859	886	57	54
Sep	876	923	822	868	54	55
Oct	891	962	834	904	57	58
Nov	874	927	818	872	56	55
During Year	10,792	11,228	10,099	10,537	693	691

¹ December preceding year.

**All Layers: Average Number on Hand During the Month
by Type, United States, 1994-95**

Month	Total		Table Egg Type		All Hatching Type	
	1994	1995	1994	1995	1994	1995
	<i>1,000</i>	<i>1,000</i>	<i>1,000</i>	<i>1,000</i>	<i>1,000</i>	<i>1,000</i>
Dec ¹	290,649	299,328	241,985	247,818	48,664	51,510
Jan	290,059	298,891	240,692	246,655	49,367	52,236
Feb	290,064	297,821	240,293	245,556	49,771	52,265
Mar	290,736	297,095	240,633	244,886	50,103	52,209
Apr	290,090	296,002	239,634	243,500	50,456	52,502
May	288,801	293,741	238,184	241,421	50,617	52,320
Jun	287,992	290,861	237,376	239,040	50,616	51,821
Jul	288,008	288,767	237,097	237,331	50,911	51,436
Aug	290,337	288,917	239,256	237,361	51,081	51,556
Sep	293,398	290,900	242,496	238,910	50,902	51,990
Oct	295,188	293,084	244,495	240,992	50,693	52,092
Nov	297,150	297,043	246,380	244,478	50,770	52,565

¹ December preceding year.

**All Layers: Number on Hand First Day of the Month
by Type, United States, 1994-95**

Month	Total		Table Egg Type		All Hatching Type	
	1994	1995	1994	1995	1994	1995
	<i>1,000</i>	<i>1,000</i>	<i>1,000</i>	<i>1,000</i>	<i>1,000</i>	<i>1,000</i>
Jan	290,430	300,084	241,304	248,077	49,126	52,007
Feb	289,642	297,965	240,056	245,521	49,586	52,444
Mar	290,433	297,929	240,506	245,870	49,927	52,059
Apr	290,996	296,515	240,735	244,177	50,261	52,338
May	289,142	295,747	238,513	243,098	50,629	52,649
Jun	288,414	291,692	237,829	239,720	50,585	51,972
Jul	287,470	289,984	236,854	238,339	50,616	51,645
Aug	288,500	287,502	237,312	236,298	51,188	51,204
Sep	292,132	290,591	241,185	238,703	50,947	51,888
Oct	294,592	291,460	243,759	239,392	50,833	52,068
Nov	295,735	294,968	245,205	242,869	50,530	52,099
Dec	298,525	299,071	247,535	246,061	50,990	53,010

**All Layers: Average Number on Hand During the Month
by Type, United States, 1996-97**

Month	Total		Table Egg Type		All Hatching Type	
	1996	1997	1996	1997	1996	1997
	<i>1,000</i>	<i>1,000</i>	<i>1,000</i>	<i>1,000</i>	<i>1,000</i>	<i>1,000</i>
Dec ¹	299,345	304,463	246,272	251,044	53,073	53,419
Jan	299,230	304,289	245,921	249,923	53,309	54,366
Feb	298,904	304,000	245,247	249,435	53,657	54,565
Mar	298,853	304,285	245,382	249,343	53,471	54,942
Apr	297,493	303,618	244,673	248,055	52,820	55,563
May	295,516	302,241	242,827	246,382	52,689	55,859
Jun	294,837	300,537	242,335	245,069	52,502	55,468
Jul	296,290	299,605	244,133	244,569	52,157	55,036
Aug	297,804	300,211	245,653	245,694	52,151	54,517
Sep	298,582	303,661	246,860	249,095	51,722	54,566
Oct	300,052	306,807	248,909	251,689	51,143	55,118
Nov	302,386	309,670	250,580	254,381	51,806	55,289

¹ December preceding year.

**All Layers: Number on Hand First Day of the Month
by Type, United States, 1996-97**

Month	Total		Table Egg Type		All Hatching Type	
	1996	1997	1996	1997	1996	1997
	<i>1,000</i>	<i>1,000</i>	<i>1,000</i>	<i>1,000</i>	<i>1,000</i>	<i>1,000</i>
Jan	299,576	304,951	246,463	250,778	53,113	54,173
Feb	298,838	303,569	245,354	249,039	53,484	54,530
Mar	298,925	304,378	245,117	249,807	53,808	54,571
Apr	298,739	304,143	245,629	248,854	53,110	55,289
May	296,188	303,047	243,685	247,237	52,503	55,810
Jun	294,790	301,384	241,939	245,501	52,851	55,883
Jul	294,839	299,648	242,709	244,619	52,130	55,029
Aug	297,699	299,524	245,537	244,499	52,162	55,025
Sep	297,865	300,857	245,749	246,869	52,116	53,988
Oct	299,252	306,422	247,945	251,297	51,307	55,125
Nov	300,801	307,146	249,845	252,059	50,956	55,087
Dec	303,922	312,137	251,287	256,676	52,635	55,461

**Hatching Type Layers: Average Number on Hand During
the Month by Type, United States, 1994-95**

Month	All Hatching Type		Broiler Type		Egg Type	
	1994	1995	1994	1995	1994	1995
	<i>1,000</i>	<i>1,000</i>	<i>1,000</i>	<i>1,000</i>	<i>1,000</i>	<i>1,000</i>
Dec ¹	48,664	51,510	45,914	48,755	2,750	2,755
Jan	49,367	52,236	46,544	49,449	2,823	2,787
Feb	49,771	52,265	46,893	49,461	2,878	2,804
Mar	50,103	52,209	47,233	49,325	2,870	2,884
Apr	50,456	52,502	47,657	49,596	2,799	2,906
May	50,617	52,320	47,841	49,495	2,776	2,825
Jun	50,616	51,821	47,855	49,070	2,761	2,751
Jul	50,911	51,436	48,223	48,721	2,688	2,715
Aug	51,081	51,556	48,422	48,837	2,659	2,719
Sep	50,902	51,990	48,175	49,263	2,727	2,727
Oct	50,693	52,092	47,961	49,404	2,732	2,688
Nov	50,770	52,565	48,072	49,989	2,698	2,576

¹ December preceding year.

**Hatching Type Layers: Number on Hand First Day of the Month
by Type, United States, 1994-95**

Month	All Hatching Type		Broiler Type		Egg Type	
	1994	1995	1994	1995	1994	1995
	<i>1,000</i>	<i>1,000</i>	<i>1,000</i>	<i>1,000</i>	<i>1,000</i>	<i>1,000</i>
Jan	49,126	52,007	46,334	49,226	2,792	2,781
Feb	49,586	52,444	46,742	49,663	2,844	2,781
Mar	49,927	52,059	47,031	49,244	2,896	2,815
Apr	50,261	52,338	47,429	49,394	2,832	2,944
May	50,629	52,649	47,873	49,787	2,756	2,862
Jun	50,585	51,972	47,799	49,192	2,786	2,780
Jul	50,616	51,645	47,894	48,938	2,722	2,707
Aug	51,188	51,204	48,545	48,490	2,643	2,714
Sep	50,947	51,888	48,285	49,173	2,662	2,715
Oct	50,833	52,068	48,051	49,337	2,782	2,731
Nov	50,530	52,099	47,857	49,462	2,673	2,637
Dec	50,990	53,010	48,273	50,505	2,717	2,505

**Hatching Type Layers: Average Number on Hand During
the Month by Type, United States, 1996-97**

Month	All Hatching Type		Broiler Type		Egg Type	
	1996	1997	1996	1997	1996	1997
	<i>1,000</i>	<i>1,000</i>	<i>1,000</i>	<i>1,000</i>	<i>1,000</i>	<i>1,000</i>
Dec ¹	53,073	53,419	50,537	50,792	2,536	2,627
Jan	53,309	54,366	50,716	51,646	2,593	2,720
Feb	53,657	54,565	50,978	51,860	2,679	2,705
Mar	53,471	54,942	50,732	52,266	2,739	2,676
Apr	52,820	55,563	50,104	52,861	2,716	2,702
May	52,689	55,859	50,016	53,126	2,673	2,733
Jun	52,502	55,468	49,864	52,811	2,638	2,657
Jul	52,157	55,036	49,537	52,493	2,620	2,543
Aug	52,151	54,517	49,590	52,023	2,561	2,494
Sep	51,722	54,566	49,203	52,023	2,519	2,543
Oct	51,143	55,118	48,599	52,540	2,544	2,578
Nov	51,806	55,289	49,260	52,742	2,546	2,547

¹ December preceding year.

**Hatching Type Layers: Number on Hand First Day of the Month
by Type, United States, 1996-97**

Month	All Hatching Type		Broiler Type		Egg Type	
	1996	1997	1996	1997	1996	1997
	<i>1,000</i>	<i>1,000</i>	<i>1,000</i>	<i>1,000</i>	<i>1,000</i>	<i>1,000</i>
Jan	53,113	54,173	50,556	51,469	2,557	2,704
Feb	53,484	54,530	50,865	51,805	2,619	2,725
Mar	53,808	54,571	51,077	51,898	2,731	2,673
Apr	53,110	55,289	50,371	52,623	2,739	2,666
May	52,503	55,810	49,822	53,083	2,681	2,727
Jun	52,851	55,883	50,198	53,155	2,653	2,728
Jul	52,130	55,029	49,514	52,455	2,616	2,574
Aug	52,162	55,025	49,547	52,518	2,615	2,507
Sep	52,116	53,988	49,620	51,516	2,496	2,472
Oct	51,307	55,125	48,775	52,521	2,532	2,604
Nov	50,956	55,087	48,412	52,547	2,544	2,540
Dec	52,635	55,461	50,102	52,919	2,533	2,542

**All Layers: Average Number on Hand During the Month
by Type, 30 Selected States, 1994-95**

Month	Total		Table Egg Type		All Hatching Type	
	1994	1995	1994	1995	1994	1995
	<i>1,000</i>	<i>1,000</i>	<i>1,000</i>	<i>1,000</i>	<i>1,000</i>	<i>1,000</i>
Dec ¹	273,851	282,819	228,420	234,604	45,431	48,215
Jan	273,529	282,246	227,278	233,379	46,251	48,867
Feb	273,820	281,126	227,106	232,309	46,714	48,817
Mar	274,525	280,600	227,480	231,831	47,045	48,769
Apr	273,750	279,738	226,489	230,721	47,261	49,017
May	272,400	277,801	225,063	229,009	47,337	48,792
Jun	271,871	275,203	224,471	226,859	47,400	48,344
Jul	272,058	273,058	224,301	225,064	47,757	47,994
Aug	274,338	272,993	226,399	224,950	47,939	48,043
Sep	277,360	274,948	229,605	226,441	47,755	48,507
Oct	278,947	277,057	231,455	228,389	47,492	48,668
Nov	280,729	280,890	233,222	231,850	47,507	49,040

¹ December preceding year.

**All Layers: Number on Hand First Day of the Month
by Type, 30 Selected States, 1994-95**

Month	Total		Table Egg Type		All Hatching Type	
	1994	1995	1994	1995	1994	1995
	<i>1,000</i>	<i>1,000</i>	<i>1,000</i>	<i>1,000</i>	<i>1,000</i>	<i>1,000</i>
Jan	273,686	283,527	227,681	234,818	46,005	48,709
Feb	273,345	281,231	226,863	232,226	46,482	49,005
Mar	274,258	281,283	227,336	232,678	46,922	48,605
Apr	274,761	280,188	227,607	231,272	47,154	48,916
May	272,710	279,556	225,360	230,451	47,350	49,105
Jun	272,060	276,015	224,752	227,550	47,308	48,465
Jul	271,599	274,358	224,132	226,155	47,467	48,203
Aug	272,487	271,723	224,455	223,957	48,032	47,766
Sep	276,158	274,533	228,335	226,230	47,823	48,303
Oct	278,510	275,626	230,839	226,934	47,671	48,692
Nov	279,351	278,761	232,056	230,131	47,295	48,630
Dec	282,079	282,986	234,376	233,554	47,703	49,432

**All Layers: Average Number on Hand During the Month
by Type, 30 Selected States, 1996-97**

Month	Total		Table Egg Type		All Hatching Type	
	1996	1997	1996	1997	1996	1997
	<i>1,000</i>	<i>1,000</i>	<i>1,000</i>	<i>1,000</i>	<i>1,000</i>	<i>1,000</i>
Dec ¹	283,146	288,413	233,628	238,522	49,518	49,891
Jan	283,077	288,161	233,295	237,376	49,782	50,785
Feb	282,901	287,796	232,801	236,892	50,100	50,904
Mar	282,923	288,014	233,022	236,859	49,901	51,155
Apr	281,640	287,361	232,329	235,606	49,311	51,755
May	279,520	286,228	230,401	234,149	49,119	52,079
Jun	278,687	284,731	229,888	232,998	48,799	51,733
Jul	280,239	283,920	231,761	232,624	48,478	51,296
Aug	281,783	284,444	233,220	233,672	48,563	50,772
Sep	282,571	287,586	234,350	236,796	48,221	50,790
Oct	284,070	290,532	236,408	239,229	47,662	51,303
Nov	286,308	293,227	237,977	241,819	48,331	51,408

¹ December preceding year.

**All Layers: Number on Hand First Day of the Month
by Type, 30 Selected States, 1996-97**

Month	Total		Table Egg Type		All Hatching Type	
	1996	1997	1996	1997	1996	1997
	<i>1,000</i>	<i>1,000</i>	<i>1,000</i>	<i>1,000</i>	<i>1,000</i>	<i>1,000</i>
Jan	283,278	288,969	233,691	238,406	49,587	50,563
Feb	282,843	287,310	232,885	236,327	49,958	50,983
Mar	282,926	288,242	232,703	237,441	50,223	50,801
Apr	282,891	287,748	233,331	236,260	49,560	51,488
May	280,344	286,939	231,306	234,937	49,038	52,002
Jun	278,659	285,480	229,478	233,344	49,181	52,136
Jul	278,684	283,949	230,284	232,638	48,400	51,311
Aug	281,765	283,865	233,228	232,597	48,537	51,268
Sep	281,770	284,991	233,200	234,733	48,570	50,258
Oct	283,338	290,151	235,483	238,844	47,855	51,307
Nov	284,766	290,878	237,315	239,600	47,451	51,278
Dec	287,814	295,534	238,621	244,021	49,193	51,513

**Hatching Type Layers: Average Number on Hand During the Month
by Type, 30 Selected States, 1994-95**

Month	All Hatching Type		Broiler Type		Egg Type	
	1994	1995	1994	1995	1994	1995
	<i>1,000</i>	<i>1,000</i>	<i>1,000</i>	<i>1,000</i>	<i>1,000</i>	<i>1,000</i>
Dec ¹	45,431	48,215	42,855	45,564	2,576	2,651
Jan	46,251	48,867	43,627	46,182	2,624	2,685
Feb	46,714	48,817	44,037	46,113	2,677	2,704
Mar	47,045	48,769	44,345	45,968	2,700	2,801
Apr	47,261	49,017	44,627	46,187	2,634	2,830
May	47,337	48,792	44,722	46,047	2,615	2,745
Jun	47,400	48,344	44,772	45,675	2,628	2,669
Jul	47,757	47,994	45,180	45,363	2,577	2,631
Aug	47,939	48,043	45,381	45,418	2,558	2,625
Sep	47,755	48,507	45,135	45,879	2,620	2,628
Oct	47,492	48,668	44,873	46,071	2,619	2,597
Nov	47,507	49,040	44,917	46,555	2,590	2,485

¹ December preceding year.

**Hatching Type Layers: Number on Hand First Day
of the Month by Type, 30 Selected States, 1994-95**

Month	All Hatching Type		Broiler Type		Egg Type	
	1994	1995	1994	1995	1994	1995
	<i>1,000</i>	<i>1,000</i>	<i>1,000</i>	<i>1,000</i>	<i>1,000</i>	<i>1,000</i>
Jan	46,005	48,709	43,391	46,028	2,614	2,681
Feb	46,482	49,005	43,854	46,327	2,628	2,678
Mar	46,922	48,605	44,209	45,887	2,713	2,718
Apr	47,154	48,916	44,477	46,040	2,677	2,876
May	47,350	49,105	44,768	46,326	2,582	2,779
Jun	47,308	48,465	44,669	45,761	2,639	2,704
Jul	47,467	48,203	44,861	45,583	2,606	2,620
Aug	48,032	47,766	45,494	45,132	2,538	2,634
Sep	47,823	48,303	45,257	45,695	2,566	2,608
Oct	47,671	48,692	45,005	46,052	2,666	2,640
Nov	47,295	48,630	44,731	46,084	2,564	2,546
Dec	47,703	49,432	45,092	47,017	2,611	2,415

**Hatching Type Layers: Average Number on Hand During the Month
by Type, 30 Selected States, 1996-97**

Month	All Hatching Type		Broiler Type		Egg Type	
	1996	1997	1996	1997	1996	1997
	<i>1,000</i>	<i>1,000</i>	<i>1,000</i>	<i>1,000</i>	<i>1,000</i>	<i>1,000</i>
Dec ¹	49,518	49,891	47,070	47,374	2,448	2,517
Jan	49,782	50,785	47,273	48,177	2,509	2,608
Feb	50,100	50,904	47,517	48,303	2,583	2,601
Mar	49,901	51,155	47,264	48,582	2,637	2,573
Apr	49,311	51,755	46,691	49,162	2,620	2,593
May	49,119	52,079	46,540	49,462	2,579	2,617
Jun	48,799	51,733	46,246	49,178	2,553	2,555
Jul	48,478	51,296	45,947	48,844	2,531	2,452
Aug	48,563	50,772	46,095	48,368	2,468	2,404
Sep	48,221	50,790	45,788	48,347	2,433	2,443
Oct	47,662	51,303	45,207	48,822	2,455	2,481
Nov	48,331	51,408	45,880	48,950	2,451	2,458

¹ December preceding year.

**Hatching Type Layers: Number on Hand First Day of the Month
by Type, 30 Selected States, 1996-97**

Month	All Hatching Type		Broiler Type		Egg Type	
	1996	1997	1996	1997	1996	1997
	<i>1,000</i>	<i>1,000</i>	<i>1,000</i>	<i>1,000</i>	<i>1,000</i>	<i>1,000</i>
Jan	49,587	50,563	47,114	47,978	2,473	2,585
Feb	49,958	50,983	47,423	48,362	2,535	2,621
Mar	50,223	50,801	47,599	48,232	2,624	2,569
Apr	49,560	51,488	46,917	48,922	2,643	2,566
May	49,038	52,002	46,453	49,391	2,585	2,611
Jun	49,181	52,136	46,618	49,522	2,563	2,614
Jul	48,400	51,311	45,863	48,825	2,537	2,486
Aug	48,537	51,268	46,020	48,854	2,517	2,414
Sep	48,570	50,258	46,160	47,872	2,410	2,386
Oct	47,855	51,307	45,409	48,814	2,446	2,493
Nov	47,451	51,278	44,997	48,820	2,454	2,458
Dec	49,193	51,513	46,759	49,065	2,434	2,448

**Eggs: Number Laid per 100 Layers During the Month
by Type, United States, 1994-95**

Month	Total		Table Egg Type		All Hatching Type	
	1994	1995	1994	1995	1994	1995
	<i>Number</i>	<i>Number</i>	<i>Number</i>	<i>Number</i>	<i>Number</i>	<i>Number</i>
Dec ¹	2,166	2,184	2,234	2,253	1,825	1,848
Jan	2,132	2,141	2,199	2,207	1,809	1,830
Feb	1,930	1,930	1,987	1,989	1,654	1,651
Mar	2,174	2,184	2,246	2,258	1,828	1,835
Apr	2,093	2,102	2,160	2,170	1,776	1,790
May	2,143	2,146	2,203	2,206	1,857	1,871
Jun	2,080	2,085	2,142	2,140	1,792	1,833
Jul	2,154	2,149	2,222	2,208	1,839	1,878
Aug	2,160	2,147	2,230	2,210	1,832	1,854
Sep	2,088	2,074	2,152	2,137	1,782	1,783
Oct	2,160	2,149	2,227	2,215	1,839	1,841
Nov	2,112	2,108	2,180	2,181	1,785	1,773

¹ December preceding year.

**Eggs: Number Laid per 100 Layers First Day of the Month
by Type, United States, 1994-95**

Month	Total		Table Egg Type		All Hatching Type	
	1994	1995	1994	1995	1994	1995
	<i>Number</i>	<i>Number</i>	<i>Number</i>	<i>Number</i>	<i>Number</i>	<i>Number</i>
Jan	69.4	70.0	71.6	72.3	58.8	59.4
Feb	68.1	68.0	70.1	70.1	58.6	58.6
Mar	69.6	69.7	71.8	72.0	59.2	58.9
Apr	70.6	71.1	73.0	73.6	59.3	59.5
May	69.0	69.2	70.9	71.1	59.7	60.2
Jun	69.2	69.4	71.2	71.3	60.0	60.8
Jul	69.4	69.6	71.5	71.3	59.8	61.4
Aug	69.5	69.0	71.8	71.1	59.0	59.6
Sep	69.8	69.3	72.0	71.4	59.5	59.6
Oct	69.3	69.1	71.3	71.1	59.6	59.7
Nov	70.0	69.5	72.1	71.7	59.3	59.2
Dec	70.7	71.0	73.0	73.6	59.7	59.1

**Eggs: Number Laid per 100 Layers During the Month
by Type, United States, 1996-97**

Month	Total		Table Egg Type		All Hatching Type	
	1996	1997	1996	1997	1996	1997
	<i>Number</i>	<i>Number</i>	<i>Number</i>	<i>Number</i>	<i>Number</i>	<i>Number</i>
Dec ¹	2,185	2,199	2,260	2,273	1,839	1,853
Jan	2,142	2,161	2,208	2,231	1,835	1,839
Feb	1,997	1,944	2,059	2,003	1,716	1,671
Mar	2,179	2,177	2,251	2,244	1,848	1,875
Apr	2,106	2,093	2,170	2,157	1,808	1,809
May	2,153	2,157	2,210	2,222	1,887	1,869
Jun	2,099	2,094	2,158	2,157	1,827	1,815
Jul	2,181	2,155	2,244	2,222	1,887	1,859
Aug	2,173	2,165	2,234	2,234	1,887	1,854
Sep	2,096	2,096	2,155	2,157	1,814	1,818
Oct	2,172	2,172	2,234	2,237	1,871	1,876
Nov	2,125	2,122	2,190	2,192	1,811	1,801

¹ December preceding year.

**Eggs: Number Laid per 100 Layers First Day of the Month
by Type, United States, 1996-97**

Month	Total		Table Egg Type		All Hatching Type	
	1996	1997	1996	1997	1996	1997
	<i>Number</i>	<i>Number</i>	<i>Number</i>	<i>Number</i>	<i>Number</i>	<i>Number</i>
Jan	70.0	70.5	72.2	72.9	59.3	59.5
Feb	68.2	68.8	70.2	70.9	59.1	59.3
Mar	69.5	69.9	71.8	72.0	59.1	60.3
Apr	70.9	70.4	73.3	72.6	60.1	60.7
May	69.4	69.2	71.3	71.2	60.3	60.3
Jun	69.5	70.0	71.3	72.2	61.1	60.2
Jul	70.4	69.5	72.5	71.5	60.5	60.6
Aug	70.3	69.6	72.2	71.8	60.9	59.4
Sep	69.9	70.0	71.8	72.2	61.0	60.1
Oct	69.8	69.8	71.8	71.7	60.2	60.9
Nov	70.2	70.4	72.2	72.6	60.4	60.2
Dec	71.3	71.0	73.7	73.4	60.3	59.7

**Hatching Type Eggs: Number Laid per 100 Layers During
the Month by Type, United States, 1994-95**

Month	All Hatching Type		Broiler Type		Egg Type	
	1994	1995	1994	1995	1994	1995
	<i>Number</i>	<i>Number</i>	<i>Number</i>	<i>Number</i>	<i>Number</i>	<i>Number</i>
Dec ¹	1,825	1,848	1,803	1,821	2,182	2,323
Jan	1,809	1,830	1,788	1,802	2,161	2,332
Feb	1,654	1,651	1,629	1,624	2,050	2,140
Mar	1,828	1,835	1,806	1,808	2,195	2,288
Apr	1,776	1,790	1,754	1,762	2,144	2,271
May	1,857	1,871	1,833	1,847	2,269	2,301
Jun	1,792	1,833	1,768	1,816	2,209	2,145
Jul	1,839	1,878	1,817	1,855	2,232	2,284
Aug	1,832	1,854	1,809	1,824	2,256	2,391
Sep	1,782	1,783	1,762	1,760	2,127	2,200
Oct	1,839	1,841	1,818	1,816	2,196	2,307
Nov	1,785	1,773	1,762	1,752	2,187	2,174

¹ December preceding year.

**Hatching Type Eggs: Number Laid per 100 Layers First Day
of the Month by Type, United States, 1994-95**

Month	All Hatching Type		Broiler Type		Egg Type	
	1994	1995	1994	1995	1994	1995
	<i>Number</i>	<i>Number</i>	<i>Number</i>	<i>Number</i>	<i>Number</i>	<i>Number</i>
Jan	58.8	59.4	58.0	58.6	72.4	75.0
Feb	58.6	58.6	57.7	57.7	72.8	75.5
Mar	59.2	58.9	58.4	58.0	72.8	75.3
Apr	59.3	59.5	58.4	58.5	75.2	76.0
May	59.7	60.2	58.8	59.3	76.0	77.2
Jun	60.0	60.8	59.2	59.9	75.3	75.3
Jul	59.8	61.4	59.0	60.8	74.2	73.1
Aug	59.0	59.6	58.2	58.8	74.4	73.0
Sep	59.5	59.6	58.6	58.7	74.8	76.1
Oct	59.6	59.7	58.8	58.8	73.1	76.0
Nov	59.3	59.2	58.5	58.4	74.9	74.1
Dec	59.7	59.1	58.8	58.4	75.1	73.3

**Hatching Type Eggs: Number Laid per 100 Layers During
the Month by Type, United States, 1996-97**

Month	All Hatching Type		Broiler Type		Egg Type	
	1996	1997	1996	1997	1996	1997
	<i>Number</i>	<i>Number</i>	<i>Number</i>	<i>Number</i>	<i>Number</i>	<i>Number</i>
Dec ¹	1,839	1,853	1,820	1,827	2,208	2,360
Jan	1,835	1,839	1,812	1,814	2,275	2,316
Feb	1,716	1,671	1,691	1,649	2,202	2,107
Mar	1,848	1,875	1,821	1,848	2,337	2,392
Apr	1,808	1,809	1,782	1,786	2,283	2,258
May	1,887	1,869	1,861	1,845	2,357	2,342
Jun	1,827	1,815	1,805	1,795	2,237	2,221
Jul	1,887	1,859	1,863	1,838	2,328	2,281
Aug	1,887	1,854	1,865	1,834	2,304	2,285
Sep	1,814	1,818	1,793	1,795	2,223	2,281
Oct	1,871	1,876	1,848	1,854	2,319	2,327
Nov	1,811	1,801	1,784	1,780	2,317	2,238

¹ December preceding year.

**Hatching Type Eggs: Number Laid per 100 Layers First Day
of the Month by Type, United States, 1996-97**

Month	All Hatching Type		Broiler Type		Egg Type	
	1996	1997	1996	1997	1996	1997
	<i>Number</i>	<i>Number</i>	<i>Number</i>	<i>Number</i>	<i>Number</i>	<i>Number</i>
Jan	59.3	59.5	58.5	58.7	75.5	75.4
Feb	59.1	59.3	58.2	58.4	75.6	76.0
Mar	59.1	60.3	58.3	59.5	74.8	75.6
Apr	60.1	60.7	59.2	59.8	76.9	77.1
May	60.3	60.3	59.5	59.5	76.4	76.6
Jun	61.1	60.2	60.3	59.4	75.6	75.5
Jul	60.5	60.6	59.9	59.8	72.8	76.7
Aug	60.9	59.4	60.2	58.7	74.3	75.6
Sep	61.0	60.1	60.3	59.3	74.6	76.4
Oct	60.2	60.9	59.5	60.1	74.3	76.5
Nov	60.4	60.2	59.7	59.4	75.1	76.4
Dec	60.3	59.7	59.4	58.9	77.5	76.8

**Eggs: Number Laid per 100 Layers During the Month
by Type, 30 Selected States, 1994-95**

Month	Total		Table Egg Type		All Hatching Type	
	1994	1995	1994	1995	1994	1995
	<i>Number</i>	<i>Number</i>	<i>Number</i>	<i>Number</i>	<i>Number</i>	<i>Number</i>
Dec ¹	2,168	2,183	2,236	2,253	1,825	1,842
Jan	2,134	2,143	2,200	2,208	1,810	1,834
Feb	1,930	1,930	1,986	1,989	1,657	1,653
Mar	2,174	2,183	2,245	2,256	1,828	1,837
Apr	2,093	2,103	2,159	2,169	1,773	1,793
May	2,142	2,145	2,202	2,205	1,859	1,865
Jun	2,077	2,085	2,138	2,139	1,791	1,831
Jul	2,150	2,152	2,218	2,210	1,832	1,877
Aug	2,155	2,151	2,224	2,215	1,827	1,850
Sep	2,084	2,079	2,147	2,144	1,778	1,779
Oct	2,158	2,152	2,225	2,219	1,832	1,837
Nov	2,110	2,109	2,177	2,181	1,777	1,770

¹ December preceding year.

**Eggs: Number Laid per 100 Layers First Day of the Month
by Type, 30 Selected States, 1994-95**

Month	Total		Table Egg Type		All Hatching Type	
	1994	1995	1994	1995	1994	1995
	<i>Number</i>	<i>Number</i>	<i>Number</i>	<i>Number</i>	<i>Number</i>	<i>Number</i>
Jan	69.5	70.1	71.6	72.3	58.7	59.4
Feb	68.1	68.1	70.1	70.0	58.5	58.7
Mar	69.6	69.7	71.7	71.9	59.2	58.9
Apr	70.7	71.1	73.0	73.5	59.2	59.5
May	68.9	69.2	70.9	71.1	59.6	60.2
Jun	69.2	69.3	71.1	71.2	60.0	60.5
Jul	69.3	69.6	71.3	71.3	59.5	61.4
Aug	69.3	69.1	71.6	71.2	58.7	59.5
Sep	69.6	69.5	71.8	71.6	59.3	59.6
Oct	69.2	69.2	71.2	71.2	59.4	59.6
Nov	69.9	69.6	72.1	71.8	59.2	59.1
Dec	70.6	71.0	72.9	73.5	59.4	59.0

**Eggs: Number Laid per 100 Layers During the Month
by Type, 30 Selected States, 1996-97**

Month	Total		Table Egg Type		All Hatching Type	
	1996	1997	1996	1997	1996	1997
	<i>Number</i>	<i>Number</i>	<i>Number</i>	<i>Number</i>	<i>Number</i>	<i>Number</i>
Dec ¹	2,184	2,199	2,258	2,271	1,836	1,854
Jan	2,143	2,161	2,208	2,230	1,838	1,839
Feb	1,998	1,944	2,058	2,002	1,719	1,674
Mar	2,179	2,179	2,249	2,244	1,850	1,879
Apr	2,106	2,098	2,169	2,161	1,809	1,810
May	2,153	2,161	2,209	2,226	1,889	1,870
Jun	2,100	2,094	2,158	2,155	1,828	1,815
Jul	2,184	2,156	2,246	2,221	1,887	1,860
Aug	2,175	2,167	2,235	2,235	1,886	1,851
Sep	2,098	2,099	2,155	2,159	1,817	1,817
Oct	2,174	2,174	2,235	2,238	1,869	1,875
Nov	2,124	2,122	2,188	2,190	1,808	1,803

¹ December preceding year.

**Eggs: Number Laid per 100 Layers First Day of the Month
by Type, 30 Selected States, 1996-97**

Month	Total		Table Egg Type		All Hatching Type	
	1996	1997	1996	1997	1996	1997
	<i>Number</i>	<i>Number</i>	<i>Number</i>	<i>Number</i>	<i>Number</i>	<i>Number</i>
Jan	69.9	70.5	72.2	72.8	59.3	59.6
Feb	68.2	68.9	70.1	70.9	59.0	59.3
Mar	69.5	69.9	71.8	72.0	59.1	60.4
Apr	70.9	70.6	73.3	72.7	60.0	60.7
May	69.4	69.3	71.3	71.3	60.4	60.3
Jun	69.5	70.0	71.3	72.2	61.1	60.4
Jul	70.4	69.5	72.5	71.4	60.6	60.6
Aug	70.4	69.6	72.3	71.9	60.9	59.5
Sep	69.9	70.1	71.8	72.2	61.1	60.2
Oct	69.9	69.9	71.8	71.8	60.2	60.9
Nov	70.2	70.4	72.2	72.6	60.4	60.2
Dec	71.3	70.9	73.6	73.2	60.2	59.8

**Hatching Type Eggs: Number Eggs Laid per 100 Layers During
the Month by Type, 30 Selected States, 1994-95**

Month	All Hatching Type		Broiler Type		Egg Type	
	1994	1995	1994	1995	1994	1995
	<i>Number</i>	<i>Number</i>	<i>Number</i>	<i>Number</i>	<i>Number</i>	<i>Number</i>
Dec ¹	1,825	1,842	1,801	1,815	2,213	2,301
Jan	1,810	1,834	1,786	1,802	2,210	2,384
Feb	1,657	1,653	1,630	1,622	2,092	2,182
Mar	1,828	1,837	1,804	1,808	2,222	2,321
Apr	1,773	1,793	1,750	1,762	2,164	2,297
May	1,859	1,865	1,834	1,839	2,294	2,295
Jun	1,791	1,831	1,767	1,811	2,207	2,173
Jul	1,832	1,877	1,811	1,854	2,212	2,281
Aug	1,827	1,850	1,803	1,821	2,267	2,362
Sep	1,778	1,779	1,755	1,757	2,176	2,169
Oct	1,832	1,837	1,812	1,810	2,176	2,310
Nov	1,777	1,770	1,754	1,748	2,162	2,173

¹ December preceding year.

**Hatching Type Eggs: Number Laid per 100 Layers First Day
the Month by Type, 30 Selected States, 1994-95**

Month	All Hatching Type		Broiler Type		Egg Type	
	1994	1995	1994	1995	1994	1995
	<i>Number</i>	<i>Number</i>	<i>Number</i>	<i>Number</i>	<i>Number</i>	<i>Number</i>
Jan	58.7	59.4	57.8	58.5	72.6	75.0
Feb	58.5	58.7	57.6	57.7	73.2	75.6
Mar	59.2	58.9	58.3	57.9	73.0	75.2
Apr	59.2	59.5	58.2	58.5	74.8	75.9
May	59.6	60.2	58.7	59.2	75.6	77.0
Jun	60.0	60.5	59.1	59.6	75.0	75.0
Jul	59.5	61.4	58.7	60.7	73.7	73.1
Aug	58.7	59.5	57.9	58.8	74.0	72.7
Sep	59.3	59.6	58.4	58.7	74.9	75.8
Oct	59.4	59.6	58.6	58.6	73.5	75.9
Nov	59.2	59.1	58.3	58.2	74.6	73.9
Dec	59.4	59.0	58.5	58.3	74.9	73.1

**Hatching Type Eggs: Number Laid per 100 Layers During
the Month by Type, 30 Selected States, 1996-97**

Month	All Hatching Type		Broiler Type		Egg Type	
	1996	1997	1996	1997	1996	1997
	<i>Number</i>	<i>Number</i>	<i>Number</i>	<i>Number</i>	<i>Number</i>	<i>Number</i>
Dec ¹	1,836	1,854	1,816	1,826	2,206	2,384
Jan	1,838	1,839	1,813	1,812	2,312	2,339
Feb	1,719	1,674	1,690	1,650	2,245	2,115
Mar	1,850	1,879	1,822	1,853	2,351	2,371
Apr	1,809	1,810	1,782	1,788	2,290	2,237
May	1,889	1,870	1,863	1,846	2,365	2,331
Jun	1,828	1,815	1,806	1,793	2,233	2,231
Jul	1,887	1,860	1,863	1,839	2,331	2,284
Aug	1,886	1,851	1,864	1,832	2,310	2,246
Sep	1,817	1,817	1,795	1,795	2,219	2,251
Oct	1,869	1,875	1,845	1,852	2,322	2,338
Nov	1,808	1,803	1,783	1,781	2,285	2,238

¹ December preceding year.

**Hatching Type Eggs: Number Laid per 100 Layers First Day
the Month by Type, 30 Selected States, 1996-97**

Month	All Hatching Type		Broiler Type		Egg Type	
	1996	1997	1996	1997	1996	1997
	<i>Number</i>	<i>Number</i>	<i>Number</i>	<i>Number</i>	<i>Number</i>	<i>Number</i>
Jan	59.3	59.6	58.4	58.7	75.5	76.0
Feb	59.0	59.3	58.1	58.3	75.8	76.1
Mar	59.1	60.4	58.2	59.6	74.9	75.3
Apr	60.0	60.7	59.1	59.9	76.6	76.7
May	60.4	60.3	59.6	59.5	76.0	76.5
Jun	61.1	60.4	60.3	59.6	75.4	75.8
Jul	60.6	60.6	59.9	59.8	72.5	77.1
Aug	60.9	59.5	60.1	58.7	74.5	75.4
Sep	61.1	60.2	60.4	59.4	74.7	76.2
Oct	60.2	60.9	59.4	60.0	74.0	77.0
Nov	60.4	60.2	59.6	59.4	74.9	76.6
Dec	60.2	59.8	59.3	59.0	77.4	76.7

**Table Egg Layers: Average Number in Flocks 30,000 and Above on Hand
During the Month, 30 Selected States, 1994**

State	Dec ^{1 2}	Jan	Feb	Mar	Apr	May
	<i>1,000</i>	<i>1,000</i>	<i>1,000</i>	<i>1,000</i>	<i>1,000</i>	<i>1,000</i>
AL		4,988	5,015	5,013	5,094	4,979
AR		7,232	7,318	7,191	7,083	7,018
CA		25,601	24,907	25,077	25,183	25,233
CO		2,704	2,742	2,733	2,684	2,629
CT		3,581	3,490	3,434	3,400	3,385
FL		9,175	9,250	9,148	8,735	8,688
GA		11,544	11,401	11,304	10,888	10,337
HI		745	750	755	743	749
IL		2,842	2,794	2,823	2,970	2,918
IN		20,397	20,340	20,113	19,921	19,808
IA		13,515	13,765	13,683	13,620	13,643
ME		4,735	4,809	4,939	5,022	4,998
MD		2,746	2,612	2,640	2,617	2,558
MI		4,968	4,896	4,939	4,892	4,900
MN		9,495	9,528	9,660	9,593	9,293
MS		2,610	2,619	2,618	2,654	2,627
MO		6,150	6,150	6,158	6,008	5,925
NE		7,625	7,650	7,625	7,625	7,700
NY		3,467	3,480	3,455	3,427	3,338
NC		6,680	6,600	6,583	6,520	6,524
OH		19,223	19,637	20,019	20,474	20,865
OK		1,980	1,975	1,975	2,000	2,000
OR		2,397	2,476	2,549	2,539	2,503
PA		19,225	19,300	19,405	19,170	19,080
SC		4,037	4,065	4,051	4,091	4,061
SD		1,770	1,728	1,710	1,728	1,730
TX		12,401	12,440	12,609	12,607	12,344
VA		1,557	1,590	1,588	1,555	1,547
WA		4,681	4,597	4,516	4,582	4,624
WI		2,739	2,811	2,825	2,755	2,798
30 Sts Total		220,810	220,735	221,138	220,180	218,802

See footnotes at end of table.

--continued

**Table Egg Layers: Average Number in Flocks 30,000 and Above on Hand
During the Month, 30 Selected States, 1994 (continued)**

State	Jun	Jul	Aug	Sep	Oct	Nov
	<i>1,000</i>	<i>1,000</i>	<i>1,000</i>	<i>1,000</i>	<i>1,000</i>	<i>1,000</i>
AL	5,034	5,172	5,040	4,982	5,188	5,111
AR	6,820	6,690	6,741	6,825	6,929	6,680
CA	24,944	24,606	24,875	25,153	25,591	26,344
CO	2,583	2,629	2,654	2,641	2,597	2,506
CT	3,497	3,530	3,457	3,494	3,470	3,461
FL	8,850	8,988	8,875	8,793	8,964	9,177
GA	9,929	9,793	10,282	10,748	10,756	10,739
HI	766	753	746	740	725	718
IL	2,715	2,557	2,610	2,716	2,790	2,800
IN	19,716	19,778	20,020	20,419	20,603	20,538
IA	13,760	13,980	14,250	14,333	14,460	14,555
ME	4,927	4,862	4,865	4,921	4,973	4,873
MD	2,605	2,730	2,745	2,679	2,750	2,793
MI	4,902	4,854	5,024	5,217	5,286	5,333
MN	9,195	9,320	9,450	9,525	9,760	10,028
MS	2,477	2,363	2,356	2,469	2,574	2,641
MO	6,075	6,043	5,983	6,125	6,110	6,100
NE	7,825	7,775	7,850	8,250	8,650	8,850
NY	3,360	3,408	3,399	3,431	3,530	3,607
NC	6,501	6,366	6,461	6,596	6,622	6,675
OH	20,832	21,156	21,421	21,424	20,951	21,294
OK	1,965	1,925	1,950	1,935	1,935	1,955
OR	2,466	2,459	2,454	2,434	2,325	2,306
PA	19,245	19,255	19,395	19,725	19,880	20,165
SC	3,950	3,872	3,910	4,000	4,075	4,035
SD	1,745	1,738	1,713	1,698	1,663	1,603
TX	12,319	12,236	12,228	12,338	12,338	12,470
VA	1,575	1,590	1,596	1,668	1,705	1,691
WA	4,667	4,664	4,890	5,168	5,126	5,085
WI	2,963	2,995	2,958	2,943	2,960	2,990
30 Sts Total	218,208	218,087	220,198	223,390	225,286	227,123

¹ December preceding year.

² Data not available.

**Table Egg Layers: Average Number in Flocks 30,000 and Above on Hand
During the Month, 30 Selected States, 1995**

State	Dec ¹	Jan	Feb	Mar	Apr	May
	<i>1,000</i>	<i>1,000</i>	<i>1,000</i>	<i>1,000</i>	<i>1,000</i>	<i>1,000</i>
AL	4,788	4,614	4,620	4,736	4,641	4,523
AR	6,407	6,354	6,191	6,017	5,890	5,920
CA	26,754	25,961	25,515	25,487	24,962	24,348
CO	2,546	2,628	2,624	2,673	2,656	2,548
CT	3,478	3,390	3,323	3,359	3,412	3,379
FL	9,146	8,856	8,591	8,587	8,416	8,143
GA	10,619	10,438	10,368	10,412	10,184	9,839
HI	734	745	731	725	712	711
IL	2,715	2,689	2,703	2,642	2,581	2,595
IN	20,937	21,132	20,823	20,522	20,374	20,445
IA	14,754	15,043	15,216	15,470	16,015	16,132
ME	4,783	4,790	4,753	4,822	4,890	4,810
MD	2,719	2,771	3,025	3,242	3,426	3,400
MI	5,143	5,054	5,107	4,966	4,968	4,938
MN	10,148	10,215	10,270	10,253	10,218	10,283
MS	2,567	2,422	2,359	2,330	2,348	2,299
MO	6,103	6,003	5,935	5,865	5,765	5,770
NE	8,946	8,944	8,846	8,845	8,844	8,830
NY	3,551	3,492	3,510	3,483	3,379	3,374
NC	6,556	6,383	6,388	6,416	6,400	6,232
OH	22,238	22,381	22,246	21,928	21,878	21,676
OK	1,950	1,940	1,955	2,035	2,043	2,023
OR	2,420	2,416	2,350	2,330	2,366	2,493
PA	20,740	21,090	21,080	20,900	20,655	20,220
SC	4,018	4,010	4,024	4,065	4,071	4,069
SD	1,738	1,720	1,658	1,643	1,703	1,908
TX	12,425	12,413	12,520	12,398	12,381	12,548
VA	1,711	1,705	1,707	1,717	1,632	1,580
WA	5,009	4,975	5,139	5,257	5,279	5,349
WI	2,928	2,844	2,850	2,864	2,787	2,779
30 Sts Total	228,571	227,418	226,427	225,989	224,876	223,164

See footnotes at end of table.

--continued

**Table Egg Layers: Average Number in Flocks 30,000 and Above on Hand
During the Month, 30 Selected States, 1995 (continued)**

State	Jun	Jul	Aug	Sep	Oct	Nov
	<i>1,000</i>	<i>1,000</i>	<i>1,000</i>	<i>1,000</i>	<i>1,000</i>	<i>1,000</i>
AL	4,661	4,841	4,756	4,600	4,530	4,538
AR	5,726	5,651	5,810	5,716	5,585	5,627
CA	23,615	23,058	23,365	24,083	24,794	25,080
CO	2,548	2,635	2,566	2,563	2,647	2,589
CT	3,361	3,404	3,496	3,453	3,364	3,380
FL	8,133	8,143	8,332	8,388	8,381	8,757
GA	9,811	9,839	9,904	10,222	10,674	10,947
HI	720	732	734	720	726	731
IL	2,671	2,704	2,657	2,607	2,532	2,729
IN	20,177	19,547	19,402	19,446	19,528	19,849
IA	16,363	16,189	15,623	15,964	16,269	17,089
ME	4,801	4,855	4,758	4,741	4,771	4,761
MD	3,247	3,274	3,316	3,315	3,427	3,262
MI	4,845	4,865	4,885	4,905	4,960	5,070
MN	10,085	9,875	9,900	10,073	10,145	10,323
MS	2,246	2,310	2,299	2,253	2,240	2,272
MO	5,750	5,598	5,608	5,780	5,875	5,850
NE	8,891	8,854	8,708	8,634	8,665	8,858
NY	3,401	3,530	3,681	3,636	3,642	3,699
NC	5,954	5,911	6,130	6,143	6,081	6,170
OH	21,308	21,325	21,479	21,697	21,754	21,840
OK	2,010	1,950	1,960	1,995	2,023	1,998
OR	2,561	2,505	2,403	2,413	2,421	2,332
PA	20,035	19,870	19,650	19,800	20,190	20,465
SC	3,875	3,694	3,670	3,713	3,827	3,792
SD	1,908	1,893	1,738	1,710	1,653	1,825
TX	12,569	12,596	12,918	12,840	12,633	12,843
VA	1,674	1,747	1,702	1,626	1,645	1,729
WA	5,305	5,148	5,000	4,994	4,988	4,977
WI	2,805	2,748	2,722	2,626	2,619	2,740
30 Sts Total	221,056	219,291	219,172	220,656	222,589	226,122

¹ December preceding year.

**Table Egg Layers: Average Number in Flocks 30,000 and Above on Hand
During the Month, 30 Selected States, 1996**

State	Dec ¹	Jan	Feb	Mar	Apr	May
	<i>1,000</i>	<i>1,000</i>	<i>1,000</i>	<i>1,000</i>	<i>1,000</i>	<i>1,000</i>
AL	4,473	4,320	4,054	4,044	4,254	4,056
AR	5,550	5,469	5,735	5,673	5,515	5,384
CA	25,113	25,233	25,103	24,706	24,061	23,744
CO	2,599	2,696	2,654	2,574	2,625	2,676
CT	3,366	3,400	3,381	3,342	3,338	3,345
FL	8,929	8,602	8,646	8,916	8,940	9,026
GA	10,874	10,716	10,834	10,923	10,721	10,296
HI	734	738	727	733	729	719
IL	3,048	3,099	2,990	2,948	3,001	3,027
IN	20,264	20,614	20,729	20,549	20,321	20,214
IA	17,624	17,547	17,285	17,351	17,678	17,667
ME	4,789	4,862	4,837	4,737	4,735	4,835
MD	3,101	3,106	3,138	3,153	3,313	3,423
MI	5,105	5,013	4,895	4,873	4,875	4,759
MN	10,623	10,770	10,860	11,033	11,145	11,045
MS	2,331	2,306	2,310	2,358	2,333	2,290
MO	5,805	5,640	5,525	5,448	5,330	5,348
NE	9,024	8,987	8,910	8,864	8,821	8,764
NY	3,710	3,677	3,548	3,609	3,675	3,626
NC	6,105	6,054	6,058	6,029	5,819	5,445
OH	22,339	22,764	22,861	23,019	23,159	23,377
OK	1,965	2,000	2,000	1,998	1,963	1,960
OR	2,367	2,522	2,650	2,601	2,535	2,503
PA	20,375	20,320	20,180	20,130	19,935	19,550
SC	3,683	3,695	3,775	3,793	3,672	3,673
SD	1,748	1,570	1,558	1,743	1,925	1,945
TX	12,916	12,735	12,793	12,996	12,969	12,788
VA	1,725	1,660	1,617	1,602	1,607	1,579
WA	5,017	4,955	4,888	4,914	4,921	4,938
WI	2,752	2,726	2,775	2,847	2,865	2,845
30 Sts Total	228,054	227,796	227,316	227,506	226,780	224,847

See footnotes at end of table.

--continued

**Table Egg Layers: Average Number in Flocks 30,000 and Above on Hand
During the Month, 30 Selected States, 1996 (continued)**

State	Jun	Jul	Aug	Sep	Oct	Nov
	<i>1,000</i>	<i>1,000</i>	<i>1,000</i>	<i>1,000</i>	<i>1,000</i>	<i>1,000</i>
AL	3,894	3,878	3,961	4,135	4,086	4,110
AR	5,095	5,089	5,036	4,937	5,005	4,923
CA	23,967	24,260	24,623	25,017	25,301	25,783
CO	2,617	2,633	2,659	2,686	2,745	2,742
CT	3,432	3,479	3,503	3,497	3,462	3,469
FL	9,216	9,169	9,136	9,204	9,130	9,213
GA	10,104	10,453	10,670	10,628	10,847	11,073
HI	707	706	722	700	701	711
IL	3,051	3,024	3,031	3,059	3,100	3,109
IN	19,952	20,225	20,497	20,654	20,517	19,821
IA	18,133	18,619	18,800	19,100	19,212	19,424
ME	4,859	4,886	4,929	5,014	5,165	5,140
MD	3,139	2,998	3,089	3,216	3,199	3,094
MI	4,558	4,471	4,564	4,655	4,654	4,727
MN	11,105	11,385	11,445	11,315	11,370	11,233
MS	2,276	2,237	2,140	2,115	2,143	2,142
MO	5,388	5,583	5,705	5,683	5,588	5,435
NE	8,903	9,092	9,030	8,916	8,966	9,154
NY	3,504	3,357	3,331	3,212	3,183	3,261
NC	5,347	5,403	5,446	5,473	5,461	5,512
OH	23,741	23,865	23,748	23,954	24,730	25,488
OK	1,958	1,915	1,890	1,860	1,858	1,800
OR	2,415	2,462	2,518	2,475	2,520	2,546
PA	19,530	19,655	19,650	19,545	19,790	20,205
SC	3,665	3,589	3,628	3,655	3,637	3,734
SD	1,905	1,870	1,883	1,895	1,878	1,840
TX	12,481	12,404	12,631	12,983	13,294	13,366
VA	1,510	1,533	1,572	1,471	1,477	1,548
WA	5,002	5,034	4,892	4,811	4,881	4,864
WI	2,900	2,995	3,020	3,021	3,040	3,112
30 Sts Total	224,354	226,269	227,749	228,886	230,940	232,579

¹ December preceding year.

**Table Egg Layers: Average Number in Flocks 30,000 and Above on Hand
During the Month, 30 Selected States, 1997**

State	Dec ¹	Jan	Feb	Mar	Apr	May
	<i>1,000</i>	<i>1,000</i>	<i>1,000</i>	<i>1,000</i>	<i>1,000</i>	<i>1,000</i>
AL	4,214	4,056	4,051	4,147	4,115	4,140
AR	4,763	4,707	4,648	4,590	4,507	4,300
CA	25,828	25,666	25,384	24,902	24,853	24,474
CO	2,777	2,735	2,669	2,643	2,553	2,514
CT	3,386	3,324	3,259	3,255	3,332	3,318
FL	9,326	9,212	9,051	9,068	9,119	9,003
GA	11,177	11,298	11,208	11,149	11,023	10,773
HI	709	712	699	711	709	695
IL	3,068	3,151	3,239	3,198	3,044	2,943
IN	19,781	19,956	20,097	20,219	20,100	20,233
IA	19,758	19,628	19,753	20,231	20,285	20,565
ME	5,074	5,020	5,131	5,119	4,949	4,930
MD	2,963	3,000	3,084	3,068	3,035	2,975
MI	4,774	4,777	4,866	4,887	4,844	4,782
MN	11,088	11,163	11,080	10,998	10,948	10,778
MS	2,135	2,130	2,062	1,995	1,910	1,825
MO	5,433	5,292	5,295	5,532	5,493	5,381
NE	9,211	9,200	9,277	9,318	9,288	9,251
NY	3,229	3,215	3,257	3,197	3,063	3,143
NC	5,407	5,351	5,353	5,141	4,862	4,691
OH	25,782	25,359	25,418	25,772	25,497	25,127
OK	1,755	1,761	1,788	1,867	1,863	1,815
OR	2,541	2,576	2,717	2,800	2,785	2,827
PA	20,560	20,675	20,480	20,060	20,255	20,430
SC	3,881	3,922	3,844	3,725	3,703	3,556
SD	1,820	1,798	1,773	1,755	1,763	1,805
TX	13,353	13,279	13,181	13,183	13,150	13,261
VA	1,567	1,541	1,439	1,379	1,527	1,615
WA	4,844	4,752	4,663	4,715	4,787	4,873
WI	3,124	3,001	2,954	3,044	3,049	2,926
30 Sts Total	233,328	232,257	231,720	231,668	230,411	228,949

See footnotes at end of table.

--continued

**Table Egg Layers: Average Number in Flocks 30,000 and Above on Hand
During the Month, 30 Selected States, 1997 (continued)**

State	Jun	Jul	Aug	Sep	Oct	Nov
	<i>1,000</i>	<i>1,000</i>	<i>1,000</i>	<i>1,000</i>	<i>1,000</i>	<i>1,000</i>
AL	4,055	3,986	4,021	4,050	3,987	3,911
AR	4,116	4,140	4,546	4,660	4,414	4,436
CA	24,295	24,629	24,636	24,912	25,231	25,424
CO	2,601	2,728	2,827	2,871	2,994	3,087
CT	3,258	3,180	3,115	3,107	3,160	3,231
FL	8,854	8,962	9,095	9,117	9,486	9,940
GA	10,699	10,859	11,016	11,356	11,680	11,631
HI	702	685	687	687	691	707
IL	2,845	2,564	2,466	2,826	3,103	3,139
IN	20,357	20,248	20,300	20,425	20,568	21,156
IA	20,810	20,335	20,227	20,495	20,363	20,549
ME	4,856	4,817	4,796	4,788	4,821	4,729
MD	2,947	2,881	2,862	2,816	2,723	2,698
MI	4,803	4,743	4,774	4,845	4,906	4,958
MN	10,700	10,715	10,770	10,818	10,878	11,110
MS	1,824	1,851	1,883	1,855	1,820	1,883
MO	5,313	5,487	5,637	5,550	5,615	5,705
NE	9,303	9,318	9,383	9,528	9,648	9,774
NY	3,232	3,211	3,133	3,007	3,131	3,290
NC	4,706	4,528	4,397	4,401	4,276	4,251
OH	24,792	24,596	24,661	25,507	25,948	26,082
OK	1,824	1,918	2,004	2,043	2,090	2,125
OR	2,841	2,826	2,733	2,767	2,893	2,854
PA	19,790	19,820	20,225	20,555	20,855	21,295
SC	3,642	3,742	3,617	3,700	3,698	3,626
SD	1,748	1,748	1,840	1,843	1,868	1,940
TX	13,318	13,272	13,343	13,495	13,540	13,458
VA	1,572	1,508	1,422	1,515	1,627	1,606
WA	4,931	4,861	4,882	4,955	4,915	4,862
WI	3,060	3,264	3,167	3,093	3,092	3,218
30 Sts Total	227,794	227,422	228,465	231,587	234,021	236,675

¹ December preceding year.

**All Layers: Average Number on Hand During the Month,
30 Selected States, 1994**

State	Dec ¹	Jan	Feb	Mar	Apr	May
	<i>1,000</i>	<i>1,000</i>	<i>1,000</i>	<i>1,000</i>	<i>1,000</i>	<i>1,000</i>
AL	11,279	11,550	11,626	11,476	11,571	11,469
AR	16,627	17,036	17,228	17,092	17,016	17,012
CA	27,196	26,363	25,619	25,751	25,851	25,900
CO	3,287	3,246	3,290	3,311	3,250	3,190
CT	3,840	3,784	3,695	3,641	3,607	3,588
FL	9,997	10,032	10,128	10,047	9,566	9,451
GA	19,249	19,207	19,074	19,020	18,620	18,068
HI	814	821	830	835	821	827
IL	3,048	3,017	2,963	2,993	3,151	3,103
IN	20,944	21,274	21,241	21,026	20,817	20,664
IA	14,100	14,250	14,500	14,451	14,400	14,426
ME	4,892	4,920	4,993	5,125	5,201	5,173
MD	3,518	3,323	3,226	3,261	3,134	3,027
MI	5,553	5,278	5,203	5,253	5,200	5,200
MN	10,371	10,370	10,419	10,540	10,456	10,151
MS	6,319	6,240	6,335	6,431	6,527	6,460
MO	6,740	6,588	6,696	6,815	6,653	6,551
NE	7,725	7,775	7,800	7,775	7,775	7,850
NY	3,809	3,809	3,819	3,795	3,768	3,670
NC	13,721	13,698	13,631	13,703	13,873	13,983
OH	19,531	19,661	20,054	20,420	20,860	21,240
OK	3,550	3,535	3,560	3,550	3,570	3,605
OR	2,616	2,597	2,680	2,753	2,738	2,697
PA	20,570	20,500	20,615	20,758	20,541	20,435
SC	5,033	4,965	5,013	5,033	5,116	5,098
SD	2,070	2,055	2,005	1,985	2,005	2,008
TX	15,376	15,501	15,500	15,750	15,801	15,601
VA	3,908	3,926	3,888	3,830	3,764	3,781
WA	4,898	4,918	4,834	4,763	4,836	4,866
WI	3,270	3,290	3,355	3,342	3,262	3,306
30 Sts Total	273,851	273,529	273,820	274,525	273,750	272,400

See footnotes at end of table.

--continued

**All Layers: Average Number on Hand During the Month,
30 Selected States, 1994 (continued)**

State	Jun	Jul	Aug	Sep	Oct	Nov
	<i>1,000</i>	<i>1,000</i>	<i>1,000</i>	<i>1,000</i>	<i>1,000</i>	<i>1,000</i>
AL	11,485	11,708	11,581	11,457	11,606	11,705
AR	16,757	16,618	16,661	16,706	16,825	16,680
CA	25,600	25,222	25,477	25,757	26,211	26,967
CO	3,150	3,189	3,213	3,206	3,133	3,015
CT	3,701	3,727	3,648	3,690	3,662	3,649
FL	9,583	9,686	9,566	9,460	9,609	9,841
GA	17,776	17,852	18,398	18,826	18,735	18,467
HI	844	831	828	822	807	801
IL	2,891	2,723	2,769	2,875	2,965	2,987
IN	20,561	20,634	20,886	21,299	21,454	21,390
IA	14,550	14,780	15,055	15,126	15,250	15,350
ME	5,098	5,032	5,035	5,081	5,130	5,031
MD	3,122	3,258	3,242	3,139	3,208	3,305
MI	5,201	5,150	5,325	5,525	5,600	5,650
MN	10,068	10,193	10,316	10,401	10,636	10,878
MS	6,337	6,302	6,286	6,476	6,647	6,598
MO	6,711	6,701	6,683	6,873	6,851	6,866
NE	7,975	7,925	8,000	8,400	8,800	9,000
NY	3,685	3,725	3,716	3,770	3,886	3,961
NC	13,853	13,808	14,076	14,133	14,049	14,033
OH	21,216	21,503	21,766	21,778	21,291	21,590
OK	3,585	3,560	3,620	3,635	3,685	3,740
OR	2,654	2,639	2,641	2,634	2,526	2,502
PA	20,585	20,571	20,700	21,060	21,206	21,531
SC	4,968	4,886	4,940	5,043	5,083	5,076
SD	2,025	2,018	1,990	1,973	1,930	1,858
TX	15,651	15,550	15,500	15,500	15,526	15,676
VA	3,850	3,845	3,798	3,828	3,807	3,767
WA	4,913	4,904	5,126	5,413	5,362	5,316
WI	3,476	3,518	3,496	3,474	3,467	3,499
30 Sts Total	271,871	272,058	274,338	277,360	278,947	280,729

¹ December preceding year.

**All Layers: Average Number on Hand During the Month,
30 Selected States, 1995**

State	Dec ¹	Jan	Feb	Mar	Apr	May
	<i>1,000</i>	<i>1,000</i>	<i>1,000</i>	<i>1,000</i>	<i>1,000</i>	<i>1,000</i>
AL	11,722	11,725	11,711	11,720	11,630	11,460
AR	16,540	16,498	16,224	16,024	15,965	15,999
CA	27,359	26,565	26,100	26,073	25,536	24,893
CO	3,089	3,206	3,173	3,224	3,217	3,083
CT	3,663	3,574	3,509	3,549	3,596	3,561
FL	9,778	9,448	9,203	9,202	9,059	8,810
GA	18,286	18,161	18,075	18,109	17,921	17,556
HI	802	794	776	768	758	760
IL	2,915	2,901	2,909	2,839	2,774	2,795
IN	21,853	22,058	21,731	21,416	21,255	21,303
IA	15,592	15,920	16,097	16,356	16,883	17,012
ME	4,945	4,953	4,911	4,977	5,049	4,972
MD	3,294	3,368	3,622	3,823	3,991	3,937
MI	5,450	5,351	5,400	5,250	5,250	5,216
MN	10,965	11,036	11,106	11,096	11,078	11,143
MS	6,473	6,333	6,231	6,189	6,254	6,247
MO	6,918	6,828	6,790	6,728	6,628	6,670
NE	9,096	9,094	8,996	8,995	8,994	8,980
NY	3,888	3,819	3,852	3,840	3,727	3,711
NC	13,945	13,950	14,041	14,101	14,030	13,710
OH	22,511	22,661	22,531	22,263	22,256	22,058
OK	3,735	3,725	3,725	3,750	3,761	3,761
OR	2,616	2,604	2,543	2,536	2,572	2,698
PA	22,155	22,500	22,490	22,305	22,040	21,565
SC	5,088	5,035	5,049	5,075	5,065	5,040
SD	1,988	1,965	1,893	1,875	1,943	2,155
TX	15,581	15,656	15,801	15,726	15,776	15,951
VA	3,866	3,902	3,845	3,864	3,841	3,815
WA	5,253	5,239	5,411	5,531	5,560	5,631
WI	3,453	3,377	3,381	3,396	3,329	3,309
30 Sts Total	282,819	282,246	281,126	280,600	279,738	277,801

See footnotes at end of table.

--continued

**All Layers: Average Number on Hand During the Month,
30 Selected States, 1995 (continued)**

State	Jun	Jul	Aug	Sep	Oct	Nov
	<i>1,000</i>	<i>1,000</i>	<i>1,000</i>	<i>1,000</i>	<i>1,000</i>	<i>1,000</i>
AL	11,408	11,552	11,572	11,533	11,403	11,307
AR	15,894	15,723	15,744	15,738	15,640	15,797
CA	24,145	23,581	23,900	24,638	25,348	25,636
CO	3,114	3,200	3,099	3,099	3,164	3,123
CT	3,536	3,565	3,661	3,623	3,534	3,542
FL	8,788	8,774	8,965	9,043	9,039	9,420
GA	17,447	17,513	17,567	17,878	18,539	18,958
HI	769	781	784	770	776	780
IL	2,879	2,913	2,860	2,805	2,731	2,928
IN	21,013	20,389	20,222	20,266	20,355	20,787
IA	17,249	17,060	16,509	16,847	17,136	17,953
ME	4,960	5,005	4,895	4,882	4,917	4,881
MD	3,770	3,798	3,794	3,744	3,851	3,696
MI	5,116	5,138	5,158	5,177	5,236	5,345
MN	10,943	10,728	10,738	10,908	10,980	11,176
MS	6,057	5,992	6,033	6,111	6,099	6,142
MO	6,646	6,432	6,470	6,709	6,822	6,905
NE	9,041	9,004	8,858	8,784	8,815	9,008
NY	3,730	3,842	3,995	3,960	3,964	4,020
NC	13,458	13,496	13,783	13,848	13,795	13,861
OH	21,691	21,696	21,859	22,081	22,148	22,290
OK	3,715	3,700	3,755	3,765	3,788	3,843
OR	2,752	2,676	2,589	2,619	2,627	2,520
PA	21,376	21,215	20,956	21,085	21,496	21,788
SC	4,841	4,706	4,715	4,748	4,851	4,809
SD	2,155	2,138	1,983	1,953	1,888	2,048
TX	15,951	15,925	16,301	16,256	15,985	16,061
VA	3,865	3,857	3,745	3,690	3,757	3,806
WA	5,562	5,384	5,239	5,238	5,230	5,203
WI	3,332	3,275	3,244	3,150	3,143	3,257
30 Sts Total	275,203	273,058	272,993	274,948	277,057	280,890

¹ December preceding year.

**All Layers: Average Number on Hand During the Month,
30 Selected States, 1996**

State	Dec ¹	Jan	Feb	Mar	Apr	May
	<i>1,000</i>	<i>1,000</i>	<i>1,000</i>	<i>1,000</i>	<i>1,000</i>	<i>1,000</i>
AL	11,252	11,121	10,891	10,810	10,826	10,566
AR	15,839	15,749	16,065	15,943	15,450	15,141
CA	25,670	25,791	25,661	25,246	24,600	24,300
CO	3,185	3,276	3,232	3,174	3,228	3,272
CT	3,518	3,549	3,529	3,484	3,479	3,483
FL	9,612	9,294	9,340	9,599	9,607	9,682
GA	18,844	18,736	18,941	18,962	18,709	18,225
HI	782	785	774	776	767	754
IL	3,248	3,301	3,192	3,141	3,189	3,222
IN	21,329	21,667	21,791	21,624	21,378	21,288
IA	18,494	18,403	18,131	18,210	18,542	18,538
ME	4,882	4,974	4,967	4,870	4,878	4,984
MD	3,552	3,607	3,645	3,621	3,757	3,888
MI	5,375	5,281	5,155	5,135	5,141	5,021
MN	11,453	11,573	11,693	11,881	11,990	11,875
MS	6,257	6,240	6,252	6,309	6,382	6,505
MO	6,951	6,770	6,641	6,573	6,466	6,516
NE	9,174	9,137	9,060	9,014	8,971	8,914
NY	4,019	3,974	3,847	3,928	4,002	3,947
NC	13,772	13,824	13,897	13,787	13,506	13,021
OH	22,826	23,196	23,295	23,494	23,644	23,866
OK	3,900	3,900	3,868	3,888	3,841	3,833
OR	2,539	2,699	2,843	2,804	2,735	2,703
PA	21,715	21,678	21,530	21,475	21,283	20,865
SC	4,678	4,703	4,808	4,781	4,681	4,723
SD	1,945	1,745	1,730	1,935	2,138	2,160
TX	16,018	15,890	16,029	16,272	16,172	15,985
VA	3,819	3,802	3,710	3,695	3,754	3,725
WA	5,236	5,186	5,118	5,152	5,164	5,173
WI	3,262	3,226	3,266	3,340	3,360	3,345
30 Sts Total	283,146	283,077	282,901	282,923	281,640	279,520

See footnotes at end of table.

--continued

**All Layers: Average Number on Hand During the Month,
30 Selected States, 1996 (continued)**

State	Jun	Jul	Aug	Sep	Oct	Nov
	<i>1,000</i>	<i>1,000</i>	<i>1,000</i>	<i>1,000</i>	<i>1,000</i>	<i>1,000</i>
AL	10,367	10,349	10,402	10,481	10,318	10,364
AR	14,692	14,544	14,518	14,567	14,713	14,628
CA	24,521	24,810	25,186	25,571	25,841	26,331
CO	3,178	3,163	3,220	3,248	3,275	3,299
CT	3,567	3,612	3,634	3,626	3,588	3,600
FL	9,854	9,786	9,726	9,799	9,762	9,878
GA	18,062	18,447	18,607	18,441	18,539	19,016
HI	738	736	749	724	725	736
IL	3,250	3,225	3,226	3,251	3,291	3,303
IN	21,057	21,329	21,611	21,752	21,597	20,774
IA	18,983	19,459	19,662	19,967	20,079	20,310
ME	5,008	5,027	5,059	5,139	5,290	5,256
MD	3,639	3,470	3,528	3,652	3,640	3,557
MI	4,810	4,706	4,791	4,885	4,891	4,971
MN	11,933	12,223	12,273	12,155	12,203	12,051
MS	6,623	6,617	6,580	6,556	6,534	6,617
MO	6,553	6,703	6,745	6,663	6,611	6,518
NE	9,053	9,242	9,180	9,066	9,116	9,304
NY	3,807	3,635	3,610	3,495	3,467	3,547
NC	12,707	12,680	12,747	12,607	12,298	12,452
OH	24,201	24,326	24,230	24,436	25,214	25,986
OK	3,868	3,875	3,890	3,793	3,753	3,730
OR	2,607	2,646	2,710	2,675	2,720	2,741
PA	20,838	20,940	20,893	20,793	21,066	21,470
SC	4,675	4,598	4,660	4,718	4,705	4,763
SD	2,118	2,080	2,095	2,110	2,090	2,048
TX	15,650	15,549	15,973	16,428	16,645	16,707
VA	3,692	3,721	3,671	3,419	3,428	3,565
WA	5,242	5,273	5,122	5,045	5,122	5,102
WI	3,394	3,468	3,485	3,509	3,549	3,684
30 Sts Total	278,687	280,239	281,783	282,571	284,070	286,308

¹ December preceding year.

**All Layers: Average Number on Hand During the Month,
30 Selected States, 1997**

State	Dec ¹	Jan	Feb	Mar	Apr	May
	<i>1,000</i>	<i>1,000</i>	<i>1,000</i>	<i>1,000</i>	<i>1,000</i>	<i>1,000</i>
AL	10,739	10,685	10,541	10,653	10,847	11,092
AR	14,597	14,740	14,914	14,810	14,710	14,469
CA	26,421	26,270	25,956	25,478	25,474	25,096
CO	3,367	3,292	3,222	3,232	3,139	3,096
CT	3,526	3,469	3,406	3,401	3,477	3,456
FL	10,044	9,949	9,764	9,812	9,823	9,650
GA	19,370	19,689	19,828	19,948	19,945	19,623
HI	734	737	723	736	733	719
IL	3,267	3,349	3,431	3,381	3,223	3,125
IN	20,607	20,824	20,980	21,084	20,948	21,094
IA	20,691	20,585	20,701	21,163	21,235	21,539
ME	5,176	5,112	5,227	5,226	5,055	5,039
MD	3,436	3,490	3,559	3,476	3,418	3,402
MI	5,016	5,021	5,115	5,136	5,089	5,024
MN	11,893	11,939	11,858	11,771	11,716	11,564
MS	6,731	6,759	6,705	6,746	6,722	6,604
MO	6,573	6,485	6,482	6,722	6,728	6,631
NE	9,361	9,350	9,427	9,468	9,438	9,401
NY	3,455	3,399	3,463	3,412	3,280	3,354
NC	12,715	12,814	12,835	12,693	12,525	12,356
OH	26,294	25,888	25,964	26,331	26,053	25,706
OK	3,743	3,774	3,738	3,772	3,771	3,748
OR	2,726	2,756	2,889	2,963	2,961	3,016
PA	21,801	21,933	21,736	21,318	21,535	21,708
SC	4,888	4,913	4,816	4,701	4,716	4,608
SD	2,025	2,028	2,025	2,005	2,023	2,075
TX	16,825	16,801	16,677	16,665	16,651	16,795
VA	3,563	3,520	3,366	3,307	3,439	3,572
WA	5,080	4,983	4,890	4,939	5,008	5,094
WI	3,749	3,607	3,558	3,665	3,679	3,572
30 Sts Total	288,413	288,161	287,796	288,014	287,361	286,228

See footnotes at end of table.

--continued

**All Layers: Average Number on Hand During the Month,
30 Selected States, 1997 (continued)**

State	Jun	Jul	Aug	Sep	Oct	Nov
	<i>1,000</i>	<i>1,000</i>	<i>1,000</i>	<i>1,000</i>	<i>1,000</i>	<i>1,000</i>
AL	11,093	10,853	10,726	10,745	10,569	10,428
AR	14,135	14,266	14,452	14,396	14,364	14,399
CA	24,926	25,255	25,235	25,516	25,881	26,091
CO	3,156	3,268	3,402	3,435	3,560	3,688
CT	3,393	3,319	3,254	3,253	3,315	3,397
FL	9,516	9,617	9,730	9,731	10,126	10,615
GA	19,449	19,568	19,723	20,151	20,582	20,573
HI	725	708	711	711	716	732
IL	3,036	2,762	2,658	3,014	3,290	3,375
IN	21,241	21,108	21,150	21,285	21,430	21,919
IA	21,748	21,253	21,148	21,424	21,300	21,448
ME	4,970	4,927	4,904	4,894	4,935	4,857
MD	3,410	3,317	3,275	3,236	3,168	3,165
MI	5,046	4,980	5,010	5,086	5,150	5,210
MN	11,495	11,533	11,605	11,648	11,686	11,849
MS	6,544	6,603	6,667	6,699	6,706	6,790
MO	6,529	6,659	6,818	6,774	6,874	7,028
NE	9,453	9,468	9,533	9,678	9,798	9,924
NY	3,433	3,402	3,331	3,217	3,343	3,500
NC	12,261	12,030	11,870	11,716	11,519	11,575
OH	25,378	25,152	25,211	26,056	26,494	26,639
OK	3,779	3,868	3,909	3,923	3,995	4,058
OR	3,023	3,000	2,900	2,930	3,060	3,031
PA	21,063	21,075	21,453	21,778	22,096	22,573
SC	4,691	4,779	4,674	4,795	4,789	4,667
SD	2,020	2,023	2,118	2,120	2,143	2,175
TX	16,749	16,598	16,750	17,080	17,222	17,146
VA	3,614	3,550	3,324	3,391	3,605	3,539
WA	5,152	5,082	5,103	5,176	5,095	4,997
WI	3,703	3,897	3,800	3,728	3,721	3,839
30 Sts Total	284,731	283,920	284,444	287,586	290,532	293,227

¹ December preceding year.

**Eggs: Number Laid per 100 For All Layers During the Month,
30 Selected States, 1994**

State	Dec ¹	Jan	Feb	Mar	Apr	May
	<i>Number</i>	<i>Number</i>	<i>Number</i>	<i>Number</i>	<i>Number</i>	<i>Number</i>
AL	2,066	1,974	1,763	2,030	1,962	2,014
AR	1,876	1,873	1,678	1,896	1,863	1,952
CA	2,173	2,090	1,913	2,225	2,097	2,127
CO	2,160	2,002	1,793	2,024	2,000	2,069
CT	2,240	2,273	2,030	2,252	2,135	2,202
FL	2,261	2,223	1,965	2,220	2,195	2,201
GA	2,156	2,124	1,908	2,124	2,041	2,048
HI	2,000	1,987	1,848	2,065	2,010	2,012
IL	2,198	1,989	1,789	2,172	2,158	2,224
IN	2,215	2,172	2,039	2,273	2,128	2,197
IA	2,213	2,189	1,986	2,235	2,160	2,190
ME	2,310	2,317	2,103	2,322	2,250	2,358
MD	2,246	2,197	1,984	2,147	2,106	2,279
MI	2,235	2,251	2,047	2,279	2,178	2,254
MN	2,160	2,093	1,910	2,182	2,142	2,167
MS	1,994	1,955	1,752	2,021	1,961	2,043
MO	2,166	2,095	1,912	2,172	2,044	2,045
NE	2,083	2,083	1,890	2,120	2,094	2,117
NY	2,337	2,337	2,095	2,345	2,256	2,289
NC	2,033	2,000	1,805	2,014	1,889	1,931
OH	2,273	2,279	2,039	2,267	2,234	2,321
OK	1,859	1,839	1,685	1,915	1,793	1,914
OR	2,217	2,233	1,940	2,216	2,191	2,225
PA	2,329	2,298	2,066	2,322	2,239	2,276
SC	2,205	2,175	1,995	2,265	2,209	2,275
SD	2,440	2,430	2,170	2,306	2,139	2,120
TX	2,140	2,142	1,910	2,102	2,025	2,064
VA	2,021	1,961	1,800	2,063	1,993	2,063
WA	2,287	2,338	2,151	2,372	2,213	2,281
WI	2,232	2,249	1,997	2,244	2,177	2,178
30 Sts Total	2,168	2,134	1,930	2,174	2,093	2,142

See footnotes at end of table.

--continued

**Eggs: Number Laid per 100 For All Layers During the Month,
30 Selected States, 1994 (continued)**

State	Jun	Jul	Aug	Sep	Oct	Nov
	<i>Number</i>	<i>Number</i>	<i>Number</i>	<i>Number</i>	<i>Number</i>	<i>Number</i>
AL	1,942	1,999	2,012	1,955	2,008	1,956
AR	1,928	1,938	1,915	1,886	1,926	1,841
CA	2,094	2,165	2,178	2,069	2,156	2,110
CO	2,032	2,070	2,116	1,996	2,043	1,957
CT	2,108	2,227	2,275	2,195	2,239	2,192
FL	2,118	2,230	2,227	2,125	2,175	2,103
GA	1,946	2,022	1,995	1,923	2,050	2,069
HI	1,914	2,012	2,040	1,983	2,006	1,914
IL	2,179	2,277	2,239	2,157	2,293	2,310
IN	2,145	2,191	2,207	2,113	2,139	2,127
IA	2,131	2,158	2,152	2,155	2,210	2,150
ME	2,295	2,385	2,383	2,322	2,398	2,286
MD	2,178	2,241	2,283	2,230	2,276	2,209
MI	2,169	2,334	2,368	2,202	2,300	2,226
MN	2,116	2,237	2,220	2,106	2,200	2,133
MS	1,957	2,015	2,020	1,961	1,986	1,925
MO	2,086	2,209	2,170	2,110	2,233	2,214
NE	2,061	2,182	2,182	2,094	2,136	2,073
NY	2,252	2,362	2,395	2,334	2,393	2,323
NC	1,870	1,897	1,932	1,903	1,965	1,917
OH	2,225	2,297	2,283	2,218	2,330	2,219
OK	1,813	1,826	1,768	1,843	2,008	1,925
OR	2,185	2,198	2,234	2,316	2,494	2,398
PA	2,191	2,270	2,280	2,179	2,264	2,253
SC	2,194	2,251	2,247	2,181	2,243	2,167
SD	2,007	2,136	2,148	2,043	2,127	2,130
TX	1,974	2,090	2,123	2,039	2,100	2,073
VA	1,974	2,107	2,185	2,064	2,180	2,124
WA	2,259	2,325	2,302	2,235	2,313	2,276
WI	2,071	2,160	2,203	2,159	2,192	2,143
30 Sts Total	2,077	2,150	2,155	2,084	2,158	2,110

¹ December preceding year.

**Eggs: Number Laid per 100 For All Layers During the Month,
30 Selected States, 1995**

State	Dec ¹	Jan	Feb	Mar	Apr	May
	<i>Number</i>	<i>Number</i>	<i>Number</i>	<i>Number</i>	<i>Number</i>	<i>Number</i>
AL	2,013	1,953	1,759	2,005	1,917	1,990
AR	1,929	1,897	1,707	1,922	1,867	1,919
CA	2,164	2,108	1,893	2,178	2,091	2,141
CO	2,007	2,152	1,986	2,171	2,114	2,206
CT	2,239	2,210	2,023	2,282	2,225	2,218
FL	2,209	2,202	1,999	2,282	2,197	2,236
GA	2,144	2,065	1,826	2,098	2,070	2,079
HI	1,978	2,040	1,868	2,080	2,058	2,034
IL	2,436	2,378	2,097	2,325	2,199	2,147
IN	2,215	2,190	2,016	2,265	2,150	2,187
IA	2,232	2,173	1,963	2,189	2,109	2,157
ME	2,346	2,342	2,118	2,331	2,238	2,333
MD	2,338	2,257	1,988	2,223	2,130	2,235
MI	2,272	2,244	2,066	2,325	2,205	2,263
MN	2,234	2,220	1,981	2,217	2,130	2,145
MS	2,024	1,990	1,733	1,971	1,951	2,017
MO	2,284	2,197	1,900	2,155	2,127	2,174
NE	2,207	2,275	2,072	2,313	2,226	2,232
NY	2,392	2,357	2,129	2,396	2,254	2,290
NC	1,986	1,928	1,716	1,929	1,882	1,955
OH	2,270	2,237	2,019	2,313	2,233	2,298
OK	1,981	2,040	1,826	2,053	1,968	2,021
OR	2,332	2,227	2,045	2,287	2,216	2,372
PA	2,334	2,276	2,068	2,345	2,232	2,268
SC	2,221	2,244	2,020	2,207	2,152	2,222
SD	2,229	2,065	1,884	2,279	2,160	2,229
TX	2,137	2,069	1,873	2,137	2,035	2,019
VA	2,069	1,973	1,795	2,045	1,953	2,018
WA	2,380	2,367	2,070	2,242	2,176	2,255
WI	2,201	2,073	1,893	2,179	2,133	2,115
30 Sts Total	2,183	2,143	1,930	2,183	2,103	2,145

See footnotes at end of table.

--continued

**Eggs: Number Laid per 100 For All Layers During the Month,
30 Selected States, 1995 (continued)**

State	Jun	Jul	Aug	Sep	Oct	Nov
	<i>Number</i>	<i>Number</i>	<i>Number</i>	<i>Number</i>	<i>Number</i>	<i>Number</i>
AL	1,946	2,000	1,962	1,882	2,008	1,946
AR	1,869	1,959	1,918	1,849	1,912	1,829
CA	2,096	2,192	2,184	2,102	2,174	2,142
CO	2,087	2,219	2,291	2,130	2,118	2,081
CT	2,149	2,216	2,185	2,181	2,264	2,202
FL	2,162	2,222	2,209	2,123	2,179	2,091
GA	1,966	2,016	2,044	1,974	2,028	1,999
HI	1,932	2,015	1,956	1,914	1,969	1,923
IL	2,049	2,266	2,273	2,103	2,197	2,220
IN	2,127	2,197	2,210	2,151	2,221	2,179
IA	2,099	2,210	2,217	2,113	2,212	2,156
ME	2,238	2,258	2,329	2,315	2,400	2,336
MD	2,202	2,264	2,372	2,324	2,337	2,246
MI	2,205	2,275	2,241	2,091	2,093	2,127
MN	2,111	2,163	2,142	2,072	2,140	2,130
MS	1,948	1,986	1,939	1,865	1,968	1,954
MO	2,107	2,130	2,087	2,027	2,125	2,085
NE	2,103	2,210	2,257	2,154	2,176	2,076
NY	2,306	2,369	2,353	2,247	2,346	2,289
NC	1,910	1,919	1,886	1,863	1,935	1,876
OH	2,227	2,263	2,278	2,228	2,298	2,239
OK	1,992	2,054	2,024	1,939	2,033	1,978
OR	2,326	2,280	2,356	2,138	2,170	2,381
PA	2,194	2,225	2,209	2,158	2,266	2,254
SC	2,190	2,231	2,206	2,148	2,206	2,163
SD	2,241	2,409	2,434	2,298	2,365	2,259
TX	1,969	2,072	2,092	2,036	2,114	2,092
VA	1,966	1,996	2,083	2,060	2,050	1,971
WA	2,211	2,303	2,310	2,253	2,294	2,229
WI	2,071	2,229	2,281	2,127	2,195	2,211
30 Sts Total	2,085	2,152	2,151	2,079	2,152	2,109

¹ December preceding year.

**Eggs: Number Laid per 100 For All Layers During the Month,
30 Selected States, 1996**

State	Dec ¹	Jan	Feb	Mar	Apr	May
	<i>Number</i>	<i>Number</i>	<i>Number</i>	<i>Number</i>	<i>Number</i>	<i>Number</i>
AL	1,964	1,897	1,763	1,924	1,921	1,978
AR	1,900	1,892	1,755	1,888	1,845	1,935
CA	2,236	2,144	2,007	2,242	2,146	2,202
CO	2,166	2,167	2,073	2,237	2,076	2,109
CT	2,274	2,226	2,125	2,296	2,213	2,239
FL	2,216	2,184	1,991	2,188	2,123	2,107
GA	2,091	2,039	1,906	2,120	2,036	2,052
HI	2,009	2,012	1,946	2,083	1,950	1,956
IL	2,278	2,242	2,162	2,356	2,320	2,390
IN	2,246	2,183	2,047	2,238	2,138	2,189
IA	2,228	2,222	2,041	2,186	2,184	2,249
ME	2,438	2,413	2,275	2,485	2,378	2,528
MD	2,280	2,162	2,030	2,154	2,023	2,109
MI	2,142	2,114	2,071	2,217	2,163	2,217
MN	2,226	2,203	2,070	2,222	2,135	2,189
MS	2,030	1,987	1,823	2,013	1,927	1,983
MO	2,144	2,127	1,942	2,099	2,057	2,056
NE	2,151	2,142	2,021	2,226	2,184	2,192
NY	2,364	2,365	2,184	2,317	2,299	2,382
NC	1,946	1,910	1,756	1,900	1,873	1,935
OH	2,335	2,319	2,164	2,328	2,233	2,258
OK	2,051	2,077	1,939	2,032	1,927	2,009
OR	2,363	2,186	2,110	2,389	2,267	2,257
PA	2,344	2,270	2,132	2,333	2,222	2,253
SC	2,266	2,148	1,913	2,175	2,179	2,181
SD	2,285	2,275	2,074	2,201	2,097	2,145
TX	2,160	2,096	1,934	2,132	2,053	2,089
VA	2,016	2,025	1,887	1,976	1,865	1,960
WA	2,273	2,275	2,149	2,368	2,246	2,300
WI	2,299	2,232	2,051	2,246	2,173	2,272
30 Sts Total	2,184	2,143	1,998	2,179	2,106	2,153

See footnotes at end of table.

--continued

**Eggs: Number Laid per 100 For All Layers During the Month,
30 Selected States, 1996 (continued)**

State	Jun	Jul	Aug	Sep	Oct	Nov
	<i>Number</i>	<i>Number</i>	<i>Number</i>	<i>Number</i>	<i>Number</i>	<i>Number</i>
AL	1,929	2,029	1,990	1,918	2,045	1,959
AR	1,879	1,946	1,942	1,860	1,917	1,907
CA	2,161	2,197	2,176	2,088	2,198	2,176
CO	2,077	2,181	2,174	2,094	2,168	2,092
CT	2,187	2,298	2,229	2,151	2,258	2,222
FL	2,050	2,197	2,272	2,235	2,223	2,106
GA	2,021	2,103	2,085	2,028	2,087	2,040
HI	1,929	1,953	1,922	1,989	2,089	2,049
IL	2,308	2,357	2,387	2,338	2,400	2,331
IN	2,170	2,246	2,253	2,193	2,278	2,243
IA	2,176	2,261	2,243	2,184	2,226	2,142
ME	2,416	2,407	2,431	2,316	2,382	2,359
MD	2,116	2,248	2,154	2,054	2,280	2,249
MI	2,190	2,300	2,229	2,121	2,288	2,280
MN	2,112	2,184	2,167	2,123	2,163	2,058
MS	1,948	2,010	2,006	1,952	2,020	1,889
MO	1,999	2,104	2,194	2,146	2,178	2,148
NE	2,049	2,148	2,189	2,091	2,158	2,157
NY	2,233	2,283	2,299	2,260	2,365	2,255
NC	1,881	1,948	1,969	1,896	1,943	1,895
OH	2,182	2,302	2,295	2,185	2,249	2,186
OK	1,965	1,987	1,979	1,951	1,998	1,903
OR	2,340	2,457	2,325	2,280	2,279	2,189
PA	2,188	2,278	2,254	2,179	2,274	2,236
SC	2,053	2,175	2,232	2,183	2,274	2,225
SD	2,196	2,362	2,344	2,211	2,238	2,175
TX	2,045	2,116	2,016	1,911	2,091	2,101
VA	1,977	2,177	2,343	2,106	1,984	1,907
WA	2,270	2,352	2,362	2,240	2,284	2,234
WI	2,239	2,278	2,181	2,080	2,141	2,117
30 Sts Total	2,100	2,184	2,175	2,098	2,174	2,124

¹ December preceding year.

**Eggs: Number Laid per 100 For All Layers During the Month,
30 Selected States, 1997**

State	Dec ¹	Jan	Feb	Mar	Apr	May
	<i>Number</i>	<i>Number</i>	<i>Number</i>	<i>Number</i>	<i>Number</i>	<i>Number</i>
AL	2,002	1,956	1,755	1,990	1,936	1,983
AR	1,952	1,872	1,676	1,877	1,829	1,901
CA	2,271	2,242	1,992	2,222	2,100	2,172
CO	2,138	2,157	1,955	2,166	2,103	2,099
CT	2,297	2,248	2,143	2,411	2,186	2,228
FL	2,200	2,161	1,925	2,181	2,097	2,124
GA	2,096	2,052	1,891	2,126	1,980	2,033
HI	2,117	2,037	1,893	2,161	2,052	2,031
IL	2,357	2,269	2,069	2,307	2,172	2,112
IN	2,295	2,267	2,045	2,262	2,172	2,233
IA	2,199	2,123	1,913	2,193	2,157	2,280
ME	2,415	2,426	2,181	2,354	2,295	2,441
MD	2,299	2,178	1,939	2,244	2,224	2,293
MI	2,288	2,204	1,949	2,182	2,169	2,176
MN	2,144	2,136	1,940	2,175	2,100	2,153
MS	1,917	1,938	1,730	1,972	1,964	1,999
MO	2,236	2,159	1,928	2,172	2,066	2,066
NE	2,288	2,254	1,921	2,120	2,139	2,263
NY	2,344	2,324	2,108	2,286	2,226	2,326
NC	1,966	1,928	1,761	1,985	1,892	1,950
OH	2,309	2,298	2,045	2,290	2,215	2,287
OK	2,004	2,014	1,819	1,988	1,936	2,028
OR	2,238	2,177	2,077	2,362	2,195	2,255
PA	2,339	2,339	2,107	2,355	2,271	2,313
SC	2,209	2,056	1,910	2,191	2,120	2,192
SD	2,244	2,201	2,016	2,257	2,160	2,241
TX	2,169	2,107	1,883	2,112	2,036	2,078
VA	2,021	1,989	1,753	1,996	1,948	1,996
WA	2,343	2,308	2,086	2,318	2,196	2,291
WI	2,241	2,301	2,080	2,292	2,147	2,156
30 Sts Total	2,199	2,161	1,944	2,179	2,098	2,161

See footnotes at end of table.

--continued

**Eggs: Number Laid per 100 For All Layers During the Month,
30 Selected States, 1997 (continued)**

State	Jun	Jul	Aug	Sep	Oct	Nov
	<i>Number</i>	<i>Number</i>	<i>Number</i>	<i>Number</i>	<i>Number</i>	<i>Number</i>
AL	1,902	1,963	1,958	1,908	1,959	1,937
AR	1,825	1,837	1,841	1,827	1,887	1,820
CA	2,142	2,198	2,191	2,105	2,191	2,165
CO	2,123	2,234	2,205	2,125	2,247	2,223
CT	2,151	2,290	2,336	2,183	2,293	2,296
FL	2,018	2,111	2,179	2,117	2,143	2,073
GA	2,010	2,090	2,069	1,980	2,089	2,076
HI	1,956	2,015	1,950	1,866	1,888	1,788
IL	2,042	2,172	2,220	2,223	2,340	2,311
IN	2,184	2,293	2,293	2,218	2,282	2,194
IA	2,203	2,216	2,204	2,124	2,263	2,205
ME	2,374	2,436	2,427	2,329	2,452	2,409
MD	2,141	2,171	2,229	2,163	2,210	2,148
MI	2,082	2,241	2,272	2,232	2,266	2,139
MN	2,062	2,116	2,103	2,069	2,165	2,085
MS	1,925	1,984	1,995	1,926	1,953	1,826
MO	2,006	2,178	2,288	2,214	2,226	2,134
NE	2,157	2,167	2,186	2,139	2,192	2,094
NY	2,243	2,352	2,342	2,269	2,393	2,314
NC	1,884	1,929	1,929	1,861	1,901	1,832
OH	2,199	2,242	2,297	2,234	2,272	2,215
OK	1,985	1,991	1,970	1,886	1,927	1,922
OR	2,216	2,267	2,310	2,150	2,190	2,210
PA	2,217	2,268	2,279	2,195	2,285	2,255
SC	2,132	2,176	2,246	2,169	2,234	2,207
SD	2,193	2,173	2,170	2,214	2,241	2,127
TX	2,042	2,127	2,096	2,026	2,119	2,076
VA	1,826	1,803	1,895	1,976	1,969	1,978
WA	2,232	2,296	2,312	2,231	2,336	2,315
WI	2,160	2,335	2,368	2,226	2,284	2,292
30 Sts Total	2,094	2,156	2,167	2,099	2,174	2,122

¹ December preceding year.

**Eggs: Production by Type During December,
30 Selected States, 1994-95 ¹**

State	Total		Table Egg Type ²		All Hatching Type ²	
	1994	1995	1994	1995	1994	1995
	<i>Million Eggs</i>	<i>Million Eggs</i>	<i>Million Eggs</i>	<i>Million Eggs</i>	<i>Million Eggs</i>	<i>Million Eggs</i>
AL	233	236	114	110	119	126
AR	312	319	152	138	160	181
CA	591	592				
CO	71	62				
CT	86	82				
FL	226	216	210	204	16	12
GA	415	392	276	249	139	143
HI	16	16	16	16	0	0
IL	67	71	65	69	2	2
IN	464	484	454	473	10	11
IA	312	348				
ME	113	116				
MD	79	77	70	67	9	10
MI	124	124				
MN	224	245	215	236	9	9
MS	126	131	61	59	65	72
MO	146	158				
NE	161	201	161	201	0	0
NY	89	93				
NC	279	277	160	154	119	123
OH	444	511				
OK	66	74	44	47	22	27
OR	58	61	57	59	1	2
PA	479	517	466	499	13	18
SC	111	113	93	94	18	19
SD	51	44	51	44	0	0
TX	329	333				
VA	79	80	41	39	38	41
WA	112	125				
WI	73	76				
30 Sts						
Total	5,936	6,174	5,107	5,286	829	888

¹ December preceding year.

² Data by type of flock not shown for some States to avoid disclosing individual operations.

**Eggs: Production by Type During December,
30 Selected States, 1996-97¹**

State	Total		Table Egg Type ²		All Hatching Type ²	
	1996	1997	1996	1997	1996	1997
	<i>Million Eggs</i>	<i>Million Eggs</i>	<i>Million Eggs</i>	<i>Million Eggs</i>	<i>Million Eggs</i>	<i>Million Eggs</i>
AL	221	215	99	99	122	116
AR	301	285	119	101	182	184
CA	574	600				
CO	69	72				
CT	80	81				
FL	213	221	201	207	12	14
GA	394	406	242	251	152	155
HI	16	16	16	16	0	0
IL	74	77	73	75	1	2
IN	479	473	470	464	9	9
IA	412	455				
ME	119	125				
MD	81	79	73	71	8	8
MI	115	115				
MN	255	255	246	245	9	10
MS	127	129	55	45	72	84
MO	149	147				
NE	197	214	197	214	0	0
NY	95	81				
NC	268	250	138	125	130	125
OH	533	607				
OK	80	75	49	43	31	32
OR	60	61	59	59	1	2
PA	509	510	492	495	17	15
SC	106	108	87	90	19	18
SD	41	45	41	45	0	0
TX	346	365				
VA	77	72	40	34	37	38
WA	119	119				
WI	75	84				
30 Sts						
Total	6,185	6,342	5,276	5,417	909	925

¹ December preceding year.

² Data by type of flock not shown for some States to avoid disclosing individual operations.

**Eggs: Production by Type During January,
30 Selected States, 1994-95**

State	Total		Table Egg Type ¹		All Hatching Type ¹	
	1994	1995	1994	1995	1994	1995
	<i>Million Eggs</i>	<i>Million Eggs</i>	<i>Million Eggs</i>	<i>Million Eggs</i>	<i>Million Eggs</i>	<i>Million Eggs</i>
AL	228	229	111	102	117	127
AR	319	313	154	134	165	179
CA	551	560				
CO	65	69				
CT	86	79				
FL	223	208	206	198	17	10
GA	408	375	267	230	141	145
HI	16	16	16	16	0	0
IL	60	69	59	67	1	2
IN	462	483	452	472	10	11
IA	312	346				
ME	114	116				
MD	73	76	63	66	10	10
MI	119	120				
MN	217	245	208	236	9	9
MS	122	126	56	55	66	71
MO	138	150				
NE	162	207	162	207	0	0
NY	89	90				
NC	274	269	155	142	119	127
OH	448	507				
OK	65	76	43	48	22	28
OR	58	58	56	56	2	2
PA	471	512	456	494	15	18
SC	108	113	91	94	17	19
SD	50	41	50	41	0	0
TX	332	324				
VA	77	77	37	37	40	40
WA	115	124				
WI	74	70				
30 Sts						
Total	5,836	6,048	4,999	5,152	837	896

¹ Data by type of flock not shown for some States to avoid disclosing individual operations.

**Eggs: Production by Type During January,
30 Selected States, 1996-97**

State	Total		Table Egg Type ¹		All Hatching Type ¹	
	1996	1997	1996	1997	1996	1997
	<i>Million Eggs</i>	<i>Million Eggs</i>	<i>Million Eggs</i>	<i>Million Eggs</i>	<i>Million Eggs</i>	<i>Million Eggs</i>
AL	211	209	90	91	121	118
AR	298	276	115	96	183	180
CA	553	589				
CO	71	71				
CT	79	78				
FL	203	215	191	200	12	15
GA	382	404	229	245	153	159
HI	16	15	16	15	0	0
IL	74	76	73	74	1	2
IN	473	472	464	462	9	10
IA	409	437				
ME	120	124				
MD	78	76	70	68	8	8
MI	111	110				
MN	255	255	245	245	10	10
MS	124	131	52	45	72	86
MO	144	140				
NE	196	211	196	211	0	0
NY	94	79				
NC	264	247	131	120	133	127
OH	538	595				
OK	81	76	50	43	31	33
OR	59	60	58	58	1	2
PA	492	513	475	497	17	16
SC	101	101	82	84	19	17
SD	40	45	40	45	0	0
TX	333	354				
VA	77	70	40	32	37	38
WA	118	115				
WI	72	83				
30 Sts						
Total	6,066	6,227	5,151	5,293	915	934

¹ Data by type of flock not shown for some States to avoid disclosing individual operations.

**Eggs: Production by Type During February,
30 Selected States, 1994-95**

State	Total		Table Egg Type ¹		All Hatching Type ¹	
	1994	1995	1994	1995	1994	1995
	<i>Million Eggs</i>	<i>Million Eggs</i>	<i>Million Eggs</i>	<i>Million Eggs</i>	<i>Million Eggs</i>	<i>Million Eggs</i>
AL	205	206	98	92	107	114
AR	289	277	138	120	151	157
CA	490	494				
CO	59	63				
CT	75	71				
FL	199	184	183	174	16	10
GA	364	330	237	199	127	131
HI	15	15	15	15	0	0
IL	53	61	52	60	1	1
IN	433	438	423	428	10	10
IA	288	316				
ME	105	104				
MD	64	72	55	63	9	9
MI	106	111				
MN	199	220	190	211	9	9
MS	111	108	51	45	60	63
MO	128	129				
NE	147	186	147	186	0	0
NY	80	82				
NC	246	241	137	124	109	117
OH	409	455				
OK	60	68	38	43	22	25
OR	52	52	50	50	2	2
PA	426	465	411	449	15	16
SC	100	102	84	85	16	17
SD	44	36	44	36	0	0
TX	296	296				
VA	70	69	32	34	38	35
WA	104	112				
WI	67	64				
30 Sts						
Total	5,284	5,427	4,510	4,620	774	807

¹ Data by type of flock not shown for some States to avoid disclosing individual operations.

**Eggs: Production by Type During February,
30 Selected States, 1996-97**

State	Total		Table Egg Type ¹		All Hatching Type ¹	
	1996	1997	1996	1997	1996	1997
	<i>Million Eggs</i>	<i>Million Eggs</i>	<i>Million Eggs</i>	<i>Million Eggs</i>	<i>Million Eggs</i>	<i>Million Eggs</i>
AL	192	185	80	81	112	104
AR	282	250	109	84	173	166
CA	515	517				
CO	67	63				
CT	75	73				
FL	186	188	174	175	12	13
GA	361	375	217	225	144	150
HI	15	14	15	14	0	0
IL	69	71	68	69	1	2
IN	446	429	437	420	9	9
IA	370	396				
ME	113	114				
MD	74	69	66	62	8	7
MI	107	100				
MN	242	230	232	221	10	9
MS	114	116	47	38	67	78
MO	129	125				
NE	183	181	183	181	0	0
NY	84	73				
NC	244	226	120	108	124	118
OH	504	531				
OK	75	68	46	39	29	29
OR	60	60	58	59	2	1
PA	459	458	443	444	16	14
SC	92	92	75	76	17	16
SD	36	41	36	41	0	0
TX	310	314				
VA	70	59	36	27	34	32
WA	110	102				
WI	67	74				
30 Sts						
Total	5,651	5,594	4,790	4,742	861	852

¹ Data by type of flock not shown for some States to avoid disclosing individual operations.

**Eggs: Production by Type During March,
30 Selected States, 1994-95**

State	Total		Table Egg Type ¹		All Hatching Type ¹	
	1994	1995	1994	1995	1994	1995
	<i>Million Eggs</i>	<i>Million Eggs</i>	<i>Million Eggs</i>	<i>Million Eggs</i>	<i>Million Eggs</i>	<i>Million Eggs</i>
AL	233	235	115	109	118	126
AR	324	308	154	133	170	175
CA	573	568				
CO	67	70				
CT	82	81				
FL	223	210	205	199	18	11
GA	404	380	261	234	143	146
HI	17	16	17	16	0	0
IL	65	66	64	65	1	1
IN	478	485	467	475	11	10
IA	323	358				
ME	119	116				
MD	70	85	61	75	9	10
MI	120	122				
MN	230	246	221	236	9	10
MS	130	122	62	52	68	70
MO	148	145				
NE	165	208	165	208	0	0
NY	89	92				
NC	276	272	154	142	122	130
OH	463	515				
OK	68	77	43	49	25	28
OR	61	58	59	56	2	2
PA	482	523	465	505	17	18
SC	114	112	96	94	18	18
SD	46	43	46	43	0	0
TX	331	336				
VA	79	79	40	40	39	39
WA	113	124				
WI	75	74				
30 Sts						
Total	5,968	6,126	5,108	5,230	860	896

¹ Data by type of flock not shown for some States to avoid disclosing individual operations.

**Eggs: Production by Type During March,
30 Selected States, 1996-97**

State	Total		Table Egg Type ¹		All Hatching Type ¹	
	1996	1997	1996	1997	1996	1997
	<i>Million Eggs</i>	<i>Million Eggs</i>	<i>Million Eggs</i>	<i>Million Eggs</i>	<i>Million Eggs</i>	<i>Million Eggs</i>
AL	208	212	87	95	121	117
AR	301	278	117	92	184	186
CA	566	566				
CO	71	70				
CT	80	82				
FL	210	214	196	198	14	16
GA	402	424	246	254	156	170
HI	16	16	16	16	0	0
IL	74	78	73	76	1	2
IN	484	477	475	467	9	10
IA	398	464				
ME	121	123				
MD	78	78	70	71	8	7
MI	114	112				
MN	264	256	253	246	11	10
MS	127	133	54	43	73	90
MO	138	146				
NE	201	201	201	201	0	0
NY	91	78				
NC	262	252	131	119	131	133
OH	547	603				
OK	79	75	49	44	30	31
OR	67	70	65	69	2	1
PA	501	502	484	486	17	16
SC	104	103	86	85	18	18
SD	43	45	43	45	0	0
TX	347	352				
VA	73	66	36	31	37	35
WA	122	115				
WI	75	84				
30 Sts						
Total	6,164	6,275	5,241	5,314	923	961

¹ Data by type of flock not shown for some States to avoid disclosing individual operations.

**Eggs: Production by Type During April,
30 Selected States, 1994-95**

State	Total		Table Egg Type ¹		All Hatching Type ¹	
	1994	1995	1994	1995	1994	1995
	<i>Million Eggs</i>	<i>Million Eggs</i>	<i>Million Eggs</i>	<i>Million Eggs</i>	<i>Million Eggs</i>	<i>Million Eggs</i>
AL	227	223	113	100	114	123
AR	317	298	148	126	169	172
CA	542	534				
CO	65	68				
CT	77	80				
FL	210	199	193	188	17	11
GA	380	371	240	227	140	144
HI	16	16	16	16	0	0
IL	68	61	67	60	1	1
IN	443	457	432	447	11	10
IA	311	356				
ME	117	113				
MD	66	85	58	76	8	9
MI	113	116				
MN	224	236	215	226	9	10
MS	128	122	60	53	68	69
MO	136	141				
NE	163	200	163	200	0	0
NY	85	84				
NC	262	264	143	139	119	125
OH	466	497				
OK	64	74	42	48	22	26
OR	60	57	58	55	2	2
PA	460	492	443	475	17	17
SC	113	109	95	91	18	18
SD	43	42	43	42	0	0
TX	320	321				
VA	75	75	39	37	36	38
WA	107	121				
WI	71	71				
30 Sts						
Total	5,729	5,883	4,891	5,004	838	879

¹ Data by type of flock not shown for some States to avoid disclosing individual operations.

**Eggs: Production by Type During April,
30 Selected States, 1996-97**

State	Total		Table Egg Type ¹		All Hatching Type ¹	
	1996	1997	1996	1997	1996	1997
	<i>Million Eggs</i>	<i>Million Eggs</i>	<i>Million Eggs</i>	<i>Million Eggs</i>	<i>Million Eggs</i>	<i>Million Eggs</i>
AL	208	210	91	92	117	118
AR	285	269	110	88	175	181
CA	528	535				
CO	67	66				
CT	77	76				
FL	204	206	191	192	13	14
GA	381	395	228	233	153	162
HI	15	15	15	15	0	0
IL	74	70	73	68	1	2
IN	457	455	448	446	9	9
IA	405	458				
ME	116	116				
MD	76	76	69	70	7	6
MI	111	110				
MN	256	246	245	237	11	9
MS	123	132	49	43	74	89
MO	133	139				
NE	196	202	196	202	0	0
NY	92	73				
NC	253	237	125	108	128	129
OH	528	577				
OK	74	73	46	43	28	30
OR	62	65	60	64	2	1
PA	473	489	456	473	17	16
SC	102	100	85	82	17	18
SD	44	44	44	44	0	0
TX	332	339				
VA	70	67	34	32	36	35
WA	116	110				
WI	73	79				
30 Sts						
Total	5,931	6,029	5,039	5,092	892	937

¹ Data by type of flock not shown for some States to avoid disclosing individual operations.

**Eggs: Production by Type During May,
30 Selected States, 1994-95**

State	Total		Table Egg Type ¹		All Hatching Type ¹	
	1994	1995	1994	1995	1994	1995
	<i>Million Eggs</i>	<i>Million Eggs</i>	<i>Million Eggs</i>	<i>Million Eggs</i>	<i>Million Eggs</i>	<i>Million Eggs</i>
AL	231	228	113	100	118	128
AR	332	307	154	125	178	182
CA	551	533				
CO	66	68				
CT	79	79				
FL	208	197	191	185	17	12
GA	370	365	224	216	146	149
HI	16	16	16	16	0	0
IL	69	60	68	59	1	1
IN	454	466	443	456	11	10
IA	316	367				
ME	122	116				
MD	69	88	61	79	8	9
MI	117	118				
MN	220	239	211	229	9	10
MS	132	126	60	53	72	73
MO	134	145				
NE	166	200	166	200	0	0
NY	84	85				
NC	270	268	144	140	126	128
OH	493	507				
OK	69	76	45	49	24	27
OR	60	64	59	62	1	2
PA	465	489	448	472	17	17
SC	116	112	97	94	19	18
SD	43	45	43	45	0	0
TX	322	322				
VA	78	77	38	37	40	40
WA	111	127				
WI	72	70				
30 Sts						
Total	5,835	5,960	4,955	5,050	880	910

¹ Data by type of flock not shown for some States to avoid disclosing individual operations.

**Eggs: Production by Type During May,
30 Selected States, 1996-97**

State	Total		Table Egg Type ¹		All Hatching Type ¹	
	1996	1997	1996	1997	1996	1997
	<i>Million Eggs</i>	<i>Million Eggs</i>	<i>Million Eggs</i>	<i>Million Eggs</i>	<i>Million Eggs</i>	<i>Million Eggs</i>
AL	209	220	90	96	119	124
AR	293	275	111	88	182	187
CA	535	545				
CO	69	65				
CT	78	77				
FL	204	205	191	193	13	12
GA	374	399	218	233	156	166
HI	15	15	15	15	0	0
IL	77	66	76	64	1	2
IN	466	471	456	461	10	10
IA	417	491				
ME	126	123				
MD	82	78	75	72	7	6
MI	111	109				
MN	260	249	249	239	11	10
MS	129	132	49	41	80	91
MO	134	137				
NE	195	213	195	213	0	0
NY	94	78				
NC	252	241	121	106	131	135
OH	539	588				
OK	77	76	47	44	30	32
OR	61	68	59	66	2	2
PA	470	502	453	486	17	16
SC	103	101	85	83	18	18
SD	46	47	46	47	0	0
TX	334	349				
VA	73	71	34	34	39	37
WA	119	117				
WI	76	77				
30 Sts						
Total	6,018	6,185	5,090	5,211	928	974

¹ Data by type of flock not shown for some States to avoid disclosing individual operations.

**Eggs: Production by Type During June,
30 Selected States, 1994-95**

State	Total		Table Egg Type ¹		All Hatching Type ¹	
	1994	1995	1994	1995	1994	1995
	<i>Million Eggs</i>	<i>Million Eggs</i>	<i>Million Eggs</i>	<i>Million Eggs</i>	<i>Million Eggs</i>	<i>Million Eggs</i>
AL	223	222	109	101	114	121
AR	323	297	150	114	173	183
CA	536	506				
CO	64	65				
CT	78	76				
FL	203	190	186	178	17	12
GA	346	343	203	199	143	144
HI	16	15	16	15	0	0
IL	63	59	62	58	1	1
IN	441	447	431	438	10	9
IA	310	362				
ME	117	111				
MD	68	83	60	75	8	8
MI	113	113				
MN	213	231	204	221	9	10
MS	124	118	55	49	69	69
MO	140	140				
NE	164	190	164	190	0	0
NY	83	86				
NC	259	257	140	132	119	125
OH	472	483				
OK	65	74	42	47	23	27
OR	58	64	56	62	2	2
PA	451	469	435	453	16	16
SC	109	106	91	88	18	18
SD	41	48	41	48	0	0
TX	309	314				
VA	76	76	37	37	39	39
WA	111	123				
WI	72	69				
30 Sts						
Total	5,648	5,737	4,799	4,852	849	885

¹ Data by type of flock not shown for some States to avoid disclosing individual operations.

**Eggs: Production by Type During June,
30 Selected States, 1996-97**

State	Total		Table Egg Type ¹		All Hatching Type ¹	
	1996	1997	1996	1997	1996	1997
	<i>Million Eggs</i>	<i>Million Eggs</i>	<i>Million Eggs</i>	<i>Million Eggs</i>	<i>Million Eggs</i>	<i>Million Eggs</i>
AL	200	211	86	91	114	120
AR	276	258	104	79	172	179
CA	530	534				
CO	66	67				
CT	78	73				
FL	202	192	190	180	12	12
GA	365	391	216	228	149	163
HI	14	14	14	14	0	0
IL	75	62	74	60	1	2
IN	457	464	447	454	10	10
IA	413	479				
ME	121	118				
MD	77	73	70	66	7	7
MI	105	105				
MN	252	237	242	227	10	10
MS	129	126	49	40	80	86
MO	131	131				
NE	185	204	185	204	0	0
NY	85	77				
NC	239	231	115	102	124	129
OH	528	558				
OK	76	75	46	44	30	31
OR	61	67	59	65	2	2
PA	456	467	441	452	15	15
SC	96	100	78	81	18	19
SD	47	44	47	44	0	0
TX	320	342				
VA	73	66	33	30	40	36
WA	119	115				
WI	76	80				
30 Sts						
Total	5,852	5,961	4,960	5,022	892	939

¹ Data by type of flock not shown for some States to avoid disclosing individual operations.

**Eggs: Production by Type During July,
30 Selected States, 1994-95**

State	Total		Table Egg Type ¹		All Hatching Type ¹	
	1994	1995	1994	1995	1994	1995
	<i>Million Eggs</i>	<i>Million Eggs</i>	<i>Million Eggs</i>	<i>Million Eggs</i>	<i>Million Eggs</i>	<i>Million Eggs</i>
AL	234	231	115	108	119	123
AR	322	308	146	118	176	190
CA	546	517				
CO	66	71				
CT	83	79				
FL	216	195	200	184	16	11
GA	361	353	211	206	150	147
HI	16	16	16	16	0	0
IL	62	66	61	64	1	2
IN	452	448	442	439	10	9
IA	319	377				
ME	120	113				
MD	73	86	65	78	8	8
MI	120	117				
MN	228	232	219	222	9	10
MS	127	119	55	52	72	67
MO	148	137				
NE	173	199	173	199	0	0
NY	88	91				
NC	262	259	141	130	121	129
OH	494	491				
OK	65	76	41	48	24	28
OR	58	61	56	60	2	1
PA	467	472	451	456	16	16
SC	110	105	91	86	19	19
SD	43	52	43	52	0	0
TX	325	330				
VA	81	77	40	39	41	38
WA	114	124				
WI	76	73				
30 Sts						
Total	5,849	5,875	4,974	4,974	875	901

¹ Data by type of flock not shown for some States to avoid disclosing individual operations.

**Eggs: Production by Type During July,
30 Selected States, 1996-97**

State	Total		Table Egg Type ¹		All Hatching Type ¹	
	1996	1997	1996	1997	1996	1997
	<i>Million Eggs</i>	<i>Million Eggs</i>	<i>Million Eggs</i>	<i>Million Eggs</i>	<i>Million Eggs</i>	<i>Million Eggs</i>
AL	210	213	92	91	118	122
AR	283	262	109	79	174	183
CA	545	555				
CO	69	73				
CT	83	76				
FL	215	203	203	191	12	12
GA	388	409	234	241	154	168
HI	14	14	14	14	0	0
IL	76	60	75	58	1	2
IN	479	484	469	473	10	11
IA	440	471				
ME	121	120				
MD	78	72	70	65	8	7
MI	108	111				
MN	267	244	257	233	10	11
MS	133	131	50	43	83	88
MO	141	145				
NE	199	205	199	205	0	0
NY	83	80				
NC	247	232	121	101	126	131
OH	560	564				
OK	77	77	46	45	31	32
OR	65	68	63	67	2	1
PA	477	478	462	463	15	15
SC	100	104	82	85	18	19
SD	49	44	49	44	0	0
TX	329	353				
VA	81	64	36	31	45	33
WA	124	117				
WI	79	91				
30 Sts						
Total	6,120	6,120	5,205	5,166	915	954

¹ Data by type of flock not shown for some States to avoid disclosing individual operations.

**Eggs: Production by Type During August,
30 Selected States, 1994-95**

State	Total		Table Egg Type ¹		All Hatching Type ¹	
	1994	1995	1994	1995	1994	1995
	<i>Million Eggs</i>	<i>Million Eggs</i>	<i>Million Eggs</i>	<i>Million Eggs</i>	<i>Million Eggs</i>	<i>Million Eggs</i>
AL	233	227	115	104	118	123
AR	319	302	143	122	176	180
CA	555	522				
CO	68	71				
CT	83	80				
FL	213	198	199	187	14	11
GA	367	359	218	212	149	147
HI	16	15	16	15	0	0
IL	62	65	61	64	1	1
IN	461	447	451	438	10	9
IA	324	366				
ME	120	114				
MD	74	90	67	82	7	8
MI	126	115				
MN	229	230	220	220	9	10
MS	127	117	54	51	73	66
MO	145	135				
NE	175	200	175	200	0	0
NY	89	94				
NC	272	260	148	132	124	128
OH	497	498				
OK	64	76	40	48	24	28
OR	59	61	57	59	2	2
PA	472	463	456	447	16	16
SC	111	104	92	85	19	19
SD	43	48	43	48	0	0
TX	329	341				
VA	83	78	41	41	42	37
WA	118	121				
WI	77	74				
30 Sts						
Total	5,911	5,871	5,035	4,982	876	889

¹ Data by type of flock not shown for some States to avoid disclosing individual operations.

**Eggs: Production by Type During August,
30 Selected States, 1996-97**

State	Total		Table Egg Type ¹		All Hatching Type ¹	
	1996	1997	1996	1997	1996	1997
	<i>Million Eggs</i>	<i>Million Eggs</i>	<i>Million Eggs</i>	<i>Million Eggs</i>	<i>Million Eggs</i>	<i>Million Eggs</i>
AL	207	210	90	90	117	120
AR	282	266	106	91	176	175
CA	548	553				
CO	70	75				
CT	81	76				
FL	221	212	210	200	11	12
GA	388	408	234	242	154	166
HI	14	14	14	14	0	0
IL	77	59	76	57	1	2
IN	487	485	477	475	10	10
IA	441	466				
ME	123	119				
MD	76	73	69	67	7	6
MI	107	114				
MN	266	244	256	233	10	11
MS	132	133	50	44	82	89
MO	148	156				
NE	201	208	201	208	0	0
NY	83	78				
NC	251	229	125	97	126	132
OH	556	579				
OK	77	77	45	46	32	31
OR	63	67	61	66	2	1
PA	471	489	457	474	14	15
SC	104	105	86	86	18	19
SD	49	46	49	46	0	0
TX	322	351				
VA	86	63	39	32	47	31
WA	121	118				
WI	76	90				
30 Sts						
Total	6,128	6,163	5,212	5,223	916	940

¹ Data by type of flock not shown for some States to avoid disclosing individual operations.

**Eggs: Production by Type During September,
30 Selected States, 1994-95**

State	Total		Table Egg Type ¹		All Hatching Type ¹	
	1994	1995	1994	1995	1994	1995
	<i>Million Eggs</i>	<i>Million Eggs</i>	<i>Million Eggs</i>	<i>Million Eggs</i>	<i>Million Eggs</i>	<i>Million Eggs</i>
AL	224	217	110	97	114	120
AR	315	291	145	117	170	174
CA	533	518				
CO	64	66				
CT	81	79				
FL	201	192	189	181	12	11
GA	362	353	217	211	145	142
HI	16	15	16	15	0	0
IL	62	59	61	58	1	1
IN	450	436	439	427	11	9
IA	326	356				
ME	118	113				
MD	70	87	63	81	7	6
MI	122	108				
MN	219	226	210	217	9	9
MS	127	114	55	47	72	67
MO	145	136				
NE	176	189	176	189	0	0
NY	88	89				
NC	269	258	148	133	121	125
OH	483	492				
OK	67	73	43	46	24	27
OR	61	56	59	54	2	2
PA	459	455	444	440	15	15
SC	110	102	91	84	19	18
SD	40	45	40	45	0	0
TX	316	331				
VA	79	76	41	39	38	37
WA	121	118				
WI	75	67				
30 Sts						
Total	5,779	5,717	4,930	4,854	849	863

¹ Data by type of flock not shown for some States to avoid disclosing individual operations.

**Eggs: Production by Type During September,
30 Selected States, 1996-97**

State	Total		Table Egg Type ¹		All Hatching Type ¹	
	1996	1997	1996	1997	1996	1997
	<i>Million Eggs</i>	<i>Million Eggs</i>	<i>Million Eggs</i>	<i>Million Eggs</i>	<i>Million Eggs</i>	<i>Million Eggs</i>
AL	201	205	89	88	112	117
AR	271	263	101	94	170	169
CA	534	537				
CO	68	73				
CT	78	71				
FL	219	206	207	195	12	11
GA	374	399	226	236	148	163
HI	14	13	14	13	0	0
IL	76	67	75	65	1	2
IN	477	472	468	462	9	10
IA	436	455				
ME	119	114				
MD	75	70	69	64	6	6
MI	104	113				
MN	258	241	247	230	11	11
MS	128	129	48	41	80	88
MO	143	150				
NE	190	207	190	207	0	0
NY	79	73				
NC	239	218	120	92	119	126
OH	534	582				
OK	74	74	44	44	30	30
OR	61	63	59	62	2	1
PA	453	478	439	464	14	14
SC	103	104	85	85	18	19
SD	47	47	47	47	0	0
TX	314	346				
VA	72	67	34	34	38	33
WA	113	116				
WI	73	83				
30 Sts						
Total	5,927	6,036	5,051	5,113	876	923

¹ Data by type of flock not shown for some States to avoid disclosing individual operations.

**Eggs: Production by Type During October,
30 Selected States, 1994-95**

State	Total		Table Egg Type ¹		All Hatching Type ¹	
	1994	1995	1994	1995	1994	1995
	<i>Million Eggs</i>	<i>Million Eggs</i>	<i>Million Eggs</i>	<i>Million Eggs</i>	<i>Million Eggs</i>	<i>Million Eggs</i>
AL	233	229	116	104	117	125
AR	324	299	151	119	173	180
CA	565	551				
CO	64	67				
CT	82	80				
FL	209	197	197	186	12	11
GA	384	376	235	229	149	147
HI	16	15	16	15	0	0
IL	68	60	67	59	1	1
IN	459	452	448	442	11	10
IA	337	379				
ME	123	118				
MD	73	90	66	84	7	6
MI	129	110				
MN	234	235	224	226	10	9
MS	132	120	57	48	75	72
MO	153	145				
NE	188	192	188	192	0	0
NY	93	93				
NC	276	267	151	140	125	127
OH	496	509				
OK	74	77	48	49	26	28
OR	63	57	61	55	2	2
PA	480	487	465	471	15	16
SC	114	107	95	88	19	19
SD	41	45	41	45	0	0
TX	326	338				
VA	83	77	45	40	38	37
WA	124	120				
WI	76	69				
30 Sts						
Total	6,019	5,961	5,149	5,067	870	894

¹ Data by type of flock not shown for some States to avoid disclosing individual operations.

**Eggs: Production by Type During October,
30 Selected States, 1996-97**

State	Total		Table Egg Type ¹		All Hatching Type ¹	
	1996	1997	1996	1997	1996	1997
	<i>Million Eggs</i>	<i>Million Eggs</i>	<i>Million Eggs</i>	<i>Million Eggs</i>	<i>Million Eggs</i>	<i>Million Eggs</i>
AL	211	207	97	89	114	118
AR	282	271	106	91	176	180
CA	568	567				
CO	71	80				
CT	81	76				
FL	217	217	204	205	13	12
GA	387	430	237	259	150	171
HI	15	14	15	14	0	0
IL	79	77	78	75	1	2
IN	492	489	483	479	9	10
IA	447	482				
ME	126	121				
MD	83	70	76	63	7	7
MI	112	117				
MN	264	253	253	242	11	11
MS	132	131	49	40	83	91
MO	144	153				
NE	197	215	197	215	0	0
NY	82	80				
NC	239	219	121	91	118	128
OH	567	602				
OK	75	77	45	46	30	31
OR	62	67	60	66	2	1
PA	479	505	464	489	15	16
SC	107	107	88	87	19	20
SD	47	48	47	48	0	0
TX	348	365				
VA	68	71	34	37	34	34
WA	117	119				
WI	76	85				
30 Sts						
Total	6,175	6,315	5,284	5,353	891	962

¹ Data by type of flock not shown for some States to avoid disclosing individual operations.

**Eggs: Production by Type During November,
30 Selected States, 1994-95**

State	Total		Table Egg Type ¹		All Hatching Type ¹	
	1994	1995	1994	1995	1994	1995
	<i>Million Eggs</i>	<i>Million Eggs</i>	<i>Million Eggs</i>	<i>Million Eggs</i>	<i>Million Eggs</i>	<i>Million Eggs</i>
AL	229	220	112	103	117	117
AR	307	289	139	115	168	174
CA	569	549				
CO	59	65				
CT	80	78				
FL	207	197	195	186	12	11
GA	382	379	241	233	141	146
HI	15	15	15	15	0	0
IL	69	65	68	64	1	1
IN	455	453	445	444	10	9
IA	330	387				
ME	115	114				
MD	73	83	65	76	8	7
MI	126	114				
MN	232	238	223	229	9	9
MS	127	120	56	50	71	70
MO	152	144				
NE	187	187	187	187	0	0
NY	92	92				
NC	269	260	150	138	119	122
OH	479	499				
OK	72	76	46	48	26	28
OR	60	60	58	58	2	2
PA	485	491	469	476	16	15
SC	110	104	92	85	18	19
SD	40	46	40	46	0	0
TX	325	336				
VA	80	75	41	39	39	36
WA	121	116				
WI	75	72				
30 Sts						
Total	5,922	5,924	5,078	5,056	844	868

¹ Data by type of flock not shown for some States to avoid disclosing individual operations.

**Eggs: Production by Type During November,
30 Selected States, 1996-97**

State	Total		Table Egg Type ¹		All Hatching Type ¹	
	1996	1997	1996	1997	1996	1997
	<i>Million Eggs</i>	<i>Million Eggs</i>	<i>Million Eggs</i>	<i>Million Eggs</i>	<i>Million Eggs</i>	<i>Million Eggs</i>
AL	203	202	94	88	109	114
AR	279	262	104	88	175	174
CA	573	565				
CO	69	82				
CT	80	78				
FL	208	220	195	208	13	12
GA	388	427	240	261	148	166
HI	15	13	15	13	0	0
IL	77	78	76	75	1	3
IN	466	481	457	471	9	10
IA	435	473				
ME	124	117				
MD	80	68	73	61	7	7
MI	113	111				
MN	248	247	238	237	10	10
MS	125	124	45	38	80	86
MO	140	150				
NE	201	208	201	208	0	0
NY	80	81				
NC	236	212	120	89	116	123
OH	568	590				
OK	71	78	42	47	29	31
OR	60	67	58	66	2	1
PA	480	509	466	494	14	15
SC	106	103	88	84	18	19
SD	45	46	45	46	0	0
TX	351	356				
VA	68	70	33	38	35	32
WA	114	116				
WI	78	88				
30 Sts						
Total	6,081	6,222	5,207	5,295	874	927

¹ Data by type of flock not shown for some States to avoid disclosing individual operations.

**Chickens: Layers on Hand by State and United States,
December 1, 1994-95**

State	Layers 1 Year Old and Older		Layers 20 Weeks Old But Less Than 1 Year		Total Layers	
	1994	1995	1994	1995	1994	1995
	<i>1,000</i>	<i>1,000</i>	<i>1,000</i>	<i>1,000</i>	<i>1,000</i>	<i>1,000</i>
AL	5,015	4,640	6,626	6,700	11,641	11,340
AR	6,680	5,606	9,800	10,413	16,480	16,019
CA	17,200	16,860	10,318	8,650	27,518	25,510
CO	1,395	1,479	1,559	1,635	2,954	3,114
CT	1,680	1,016	2,021	2,516	3,701	3,532
DE	325	58	297	556	622	614
FL	4,775	5,867	5,220	3,856	9,995	9,723
GA	7,860	7,899	10,425	11,061	18,285	18,960
HI	505	446	291	328	796	774
ID	490	660	480	320	970	980
IL	1,313	1,419	1,630	1,749	2,943	3,168
IN	11,405	9,783	10,073	11,279	21,478	21,062
IA	8,500	10,218	6,750	8,400	15,250	18,618
KS	430	930	870	330	1,300	1,260
KY	1,350	450	1,250	2,250	2,600	2,700
LA	800	1,060	1,070	860	1,870	1,920
ME	291	214	4,592	4,653	4,883	4,867
MD	1,206	1,847	2,154	1,602	3,360	3,449
MA	100	94	487	259	587	353
MI	2,000	2,000	3,700	3,430	5,700	5,430
MN	4,255	6,725	6,630	4,710	10,885	11,435
MS	2,778	2,524	3,723	3,707	6,501	6,231
MO	3,375	3,827	3,580	3,124	6,955	6,951
MT	138	102	232	288	370	390
NE	3,900	5,410	5,150	3,770	9,050	9,180
NH	18	14	151	149	169	163
NJ	1,101	910	679	830	1,780	1,740
NM	748	695	438	483	1,186	1,178
NY	1,400	1,540	2,490	2,420	3,890	3,960
NC	5,685	4,735	8,300	9,075	13,985	13,810
ND	115	175	85	60	200	235
OH	9,200	6,500	13,200	16,009	22,400	22,509
OK	1,900	1,900	1,830	1,960	3,730	3,860
OR	1,690	1,500	898	997	2,588	2,497
PA	8,900	8,800	13,010	13,005	21,910	21,805
RI	116	3	84	147	200	150
SC	1,910	2,846	3,175	1,849	5,085	4,695
SD	810	215	1,020	1,885	1,830	2,100
TN	370	200	595	857	965	1,057
TX	6,000	6,070	9,700	9,990	15,700	16,060
UT	1,200	920	800	790	2,000	1,710
VT	13	25	75	78	88	103
VA	986	1,264	2,799	2,553	3,785	3,817
WA	2,480	2,440	2,808	2,790	5,288	5,230
WV	240	390	960	810	1,200	1,200
WI	2,253	1,380	1,260	1,900	3,513	3,280
WY	10	10	5	5	15	15
Oth Sts ¹	183	175	143	142	326	317
US	135,093	133,841	163,432	165,230	298,525	299,071

¹ AK, AZ and NV combined to avoid disclosure of individual operations.

**Chickens: Layers on Hand by State and United States,
December 1, 1996-97**

State	Layers 1 Year Old and Older		Layers 20 Weeks Old But Less Than 1 Year		Total Layers	
	1996	1997	1996	1997	1996	1997
	<i>1,000</i>	<i>1,000</i>	<i>1,000</i>	<i>1,000</i>	<i>1,000</i>	<i>1,000</i>
AL	4,530	4,292	6,080	6,200	10,610	10,492
AR	4,827	6,070	9,776	8,351	14,603	14,421
CA	16,520	15,270	10,130	11,010	26,650	26,280
CO	1,813	1,910	1,530	1,760	3,343	3,670
CT	1,090	1,141	2,523	2,318	3,613	3,459
DE	243	150	225	250	468	400
FL	4,335	6,216	5,662	4,522	9,997	10,738
GA	7,950	6,680	11,260	13,840	19,210	20,520
HI	490	465	235	263	725	728
ID	614	546	300	385	914	931
IL	1,167	1,534	2,094	1,929	3,261	3,463
IN	8,022	10,238	12,379	12,076	20,401	22,314
IA	11,749	11,655	8,860	10,130	20,609	21,785
KS	740	505	500	843	1,240	1,348
KY	585	1,450	2,200	1,650	2,785	3,100
LA	970	940	923	963	1,893	1,903
ME	1,202	2,256	3,996	2,523	5,198	4,779
MD	1,631	1,518	1,887	1,644	3,518	3,162
MA	122	72	487	473	609	545
MI	1,800	2,343	3,300	2,817	5,100	5,160
MN	6,100	6,740	5,760	5,215	11,860	11,955
MS	2,390	2,487	4,276	4,424	6,666	6,911
MO	3,035	3,490	3,470	3,605	6,505	7,095
MT	173	35	197	255	370	290
NE	5,189	6,011	4,240	3,979	9,429	9,990
NH	12	53	143	106	155	159
NJ	1,517	931	333	1,023	1,850	1,954
NM	717	636	504	536	1,221	1,172
NY	1,360	1,070	2,150	2,400	3,510	3,470
NC	4,609	4,307	8,087	7,306	12,696	11,613
ND	70	100	140	140	210	240
OH	10,000	10,863	16,300	16,195	26,300	27,058
OK	1,840	1,909	1,820	2,166	3,660	4,075
OR	1,600	1,800	1,126	1,200	2,726	3,000
PA	10,600	9,400	11,000	13,605	21,600	23,005
RI	24	10	66	61	90	71
SC	2,315	2,205	2,535	2,424	4,850	4,629
SD	1,325	800	700	1,370	2,025	2,170
TN	400	316	635	922	1,035	1,238
TX	7,170	5,630	9,580	11,545	16,750	17,175
UT	895	939	839	759	1,734	1,698
VT	116	9	69	188	185	197
VA	936	704	2,586	2,759	3,522	3,463
WA	2,914	2,815	2,172	2,156	5,086	4,971
WV	246	285	795	760	1,041	1,045
WI	1,922	1,994	1,869	1,989	3,791	3,983
WY	9	8	3	4	12	12
Oth Sts ¹	164	168	132	132	296	300
US	138,048	140,966	165,874	171,171	303,922	312,137

¹ AK, AZ and NV combined to avoid disclosure of individual operations.

**Chickens: Pullets Not of Laying Age and Other Chickens
by State and United States, December 1, 1994-95**

State	Pullets 13 Weeks Old and Older But Less Than 20 Weeks		Pullet Chicks and Pullets Under 13 Weeks of Age		Other Chickens	
	1994	1995	1994	1995	1994	1995
	<i>1,000</i>	<i>1,000</i>	<i>1,000</i>	<i>1,000</i>	<i>1,000</i>	<i>1,000</i>
AL	1,940	1,961	2,000	2,561	1,015	1,011
AR	3,299	3,122	4,535	4,335	1,492	1,599
CA	1,600	1,600	2,300	2,500	82	90
CO	385	380	529	465	112	166
CT	232	251	600	574	22	12
DE	0	20	26	39	44	46
FL	756	622	1,669	1,005	60	65
GA	2,812	3,204	3,611	3,528	1,054	1,110
HI	83	68	102	91	0	0
ID	144	144	209	211	7	5
IL	251	115	175	379	21	35
IN	2,112	1,844	2,757	2,663	53	59
IA	1,850	1,929	2,400	3,287	50	50
KS	80	80	218	208	2	2
KY	230	395	250	375	120	130
LA	240	270	280	390	110	120
ME	314	1,647	1,192	163	51	35
MD	279	400	638	550	74	51
MA	1	42	57	126	1	1
MI	770	420	423	753	7	7
MN	1,155	1,430	2,130	1,895	60	40
MS	1,354	1,044	1,789	1,865	601	605
MO	405	277	910	1,080	105	117
MT	27	43	112	106	1	1
NE	555	690	990	1,130	5	5
NH	23	9	70	71	30	32
NJ	104	91	0	83	1	0
NM	211	63	40	156	3	3
NY	340	440	945	570	25	30
NC	1,550	1,813	2,960	2,534	945	678
ND	3	3	30	30	2	2
OH	2,500	2,500	3,942	3,960	30	31
OK	430	560	495	500	215	220
OR	346	261	201	335	10	10
PA	1,750	2,000	2,750	2,600	120	115
RI	5	21	1	19	1	1
SC	435	525	610	640	150	190
SD	300	200	319	215	1	1
TN	260	188	240	285	50	110
TX	1,400	1,490	1,900	2,450	300	440
UT	195	150	179	179	1	1
VT	5	17	0	0	1	1
VA	553	544	676	732	198	292
WA	1,197	873	730	883	21	22
WV	370	140	350	340	80	70
WI	300	110	350	500	30	20
WY	2	2	2	2	1	1
Oth Sts ¹	6	6	2	2	5	5
US	33,159	34,004	46,694	47,365	7,369	7,637

¹ AK, AZ and NV combined to avoid disclosure of individual operations.

**Chickens: Pullets Not of Laying Age and Other Chickens
by State and United States, December 1, 1996-97**

State	Pullets 13 Weeks Old and Older But Less Than 20 Weeks		Pullet Chicks and Pullets Under 13 Weeks of Age		Other Chickens	
	1996	1997	1996	1997	1996	1997
	<i>1,000</i>	<i>1,000</i>	<i>1,000</i>	<i>1,000</i>	<i>1,000</i>	<i>1,000</i>
AL	1,575	2,066	2,270	2,500	990	1,033
AR	3,137	3,486	3,750	3,976	1,391	1,262
CA	1,200	1,000	1,900	3,080	50	140
CO	320	229	280	643	137	176
CT	217	299	598	550	4	1
DE	60	90	100	170	24	25
FL	468	1,045	847	1,133	187	56
GA	2,950	3,120	4,350	5,080	1,140	1,190
HI	76	55	75	80	0	0
ID	134	51	268	241	5	5
IL	226	174	24	380	21	39
IN	1,738	1,355	3,264	3,479	45	41
IA	2,533	2,707	3,240	3,423	120	50
KS	38	245	90	457	2	2
KY	420	580	650	820	195	200
LA	375	165	255	370	87	82
ME	544	621	1,325	1,495	6	5
MD	483	428	346	483	42	42
MA	85	3	74	155	5	1
MI	820	390	390	630	10	10
MN	1,255	810	1,835	1,895	45	70
MS	994	1,407	2,479	2,049	595	706
MO	975	675	715	1,490	155	185
MT	43	45	56	69	1	1
NE	494	563	1,566	1,573	4	0
NH	23	24	39	29	30	6
NJ	0	174	96	0	0	0
NM	0	68	178	162	5	4
NY	360	540	510	470	20	20
NC	1,761	1,920	2,235	2,952	589	690
ND	2	3	30	40	3	7
OH	2,900	3,000	4,630	4,700	30	40
OK	340	400	820	920	220	210
OR	362	344	253	241	9	6
PA	1,900	2,000	2,700	2,550	115	115
RI	3	17	1	1	1	1
SC	577	438	420	446	93	157
SD	210	175	110	205	0	0
TN	250	246	241	442	74	110
TX	1,700	2,315	2,460	2,700	390	510
UT	141	244	168	196	1	0
VT	10	1	1	4	1	1
VA	582	582	314	428	230	187
WA	703	1,090	1,126	805	22	1
WV	316	322	300	292	123	131
WI	211	59	671	958	20	25
WY	2	2	2	2	1	1
Oth Sts ¹	5	5	2	2	5	5
US	33,518	35,578	48,054	54,766	7,243	7,549

¹ AK, AZ and NV combined to avoid disclosure of individual operations.

**Chickens: Number, Value per Head and Total Value by State
and United States, December 1, 1994-95 ¹**

State	Number		Value per Head		Total Value	
	1994	1995	1994	1995	1994	1995
	<i>1,000 Head</i>	<i>1,000 Head</i>	<i>Dollars</i>	<i>Dollars</i>	<i>1,000 Dollars</i>	<i>1,000 Dollars</i>
AL	16,596	16,873	3.30	4.30	54,767	72,554
AR	25,806	25,075	4.10	4.20	105,805	105,315
CA	31,500	29,700	1.90	1.90	59,850	56,430
CO	3,980	4,125	2.10	1.90	8,358	7,838
CT	4,555	4,369	2.50	2.50	11,388	10,923
DE	692	719	5.30	4.80	3,668	3,451
FL	12,480	11,415	2.30	2.10	28,704	23,972
GA	25,762	26,802	2.90	3.10	74,710	83,086
HI	981	933	2.40	2.80	2,354	2,612
ID	1,330	1,340	1.70	1.70	2,261	2,278
IL	3,390	3,697	1.40	1.50	4,746	5,546
IN	26,400	25,628	1.30	1.40	34,320	35,879
IA	19,550	23,884	1.50	1.50	29,325	35,826
KS	1,600	1,550	1.40	1.10	2,240	1,705
KY	3,200	3,600	2.30	2.20	7,360	7,920
LA	2,500	2,700	2.30	2.30	5,750	6,210
ME	6,440	6,712	2.10	1.90	13,524	12,753
MD	4,351	4,450	3.70	2.90	16,099	12,905
MA	646	522	2.20	2.10	1,421	1,096
MI	6,900	6,610	1.60	1.20	11,040	7,932
MN	14,230	14,800	1.50	1.50	21,345	22,200
MS	10,245	9,745	4.00	4.60	40,980	44,827
MO	8,375	8,425	1.90	1.80	15,913	15,165
MT	510	540	2.70	2.50	1,377	1,350
NE	10,600	11,005	1.90	1.90	20,140	20,910
NH	292	275	1.70	2.00	496	550
NJ	1,885	1,914	2.60	2.50	4,901	4,785
NM	1,440	1,400	1.40	1.30	2,016	1,820
NY	5,200	5,000	1.90	2.00	9,880	10,000
NC	19,440	18,835	3.70	4.00	71,928	75,340
ND	235	270	2.30	2.30	541	621
OH	28,872	29,000	1.40	1.30	40,421	37,700
OK	4,870	5,140	3.50	3.80	17,045	19,532
OR	3,145	3,103	1.70	1.80	5,347	5,585
PA	26,530	26,520	1.70	1.70	45,101	45,084
RI	207	191	3.00	2.10	621	401
SC	6,280	6,050	2.30	2.40	14,444	14,520
SD	2,450	2,516	1.80	2.20	4,410	5,535
TN	1,515	1,640	3.10	4.30	4,697	7,052
TX	19,300	20,440	2.20	2.30	42,460	47,012
UT	2,375	2,040	1.50	1.30	3,563	2,652
VT	94	121	2.30	2.30	216	278
VA	5,212	5,385	4.50	4.50	23,454	24,233
WA	7,236	7,008	2.20	2.00	15,919	14,016
WV	2,000	1,750	4.40	4.50	8,800	7,875
WI	4,193	3,910	2.00	2.30	8,386	8,993
WY	20	20	2.30	2.10	46	42
Oth Sts ²	339	330	2.03	1.81	687	596
US	385,747	388,077	2.34	2.41	902,815	934,905

¹ Excludes commercial broilers.

² AK, AZ and NV combined to avoid disclosure of individual operations.

**Chickens: Number, Value per Head and Total Value by State
and United States, December 1, 1996-97 ¹**

State	Number		Value per Head		Total Value	
	1996	1997	1996	1997	1996	1997
	<i>1,000 Head</i>	<i>1,000 Head</i>	<i>Dollars</i>	<i>Dollars</i>	<i>1,000 Dollars</i>	<i>1,000 Dollars</i>
AL	15,445	16,091	4.60	5.10	71,047	82,064
AR	22,881	23,145	4.90	5.00	112,117	115,725
CA	29,800	30,500	2.20	2.20	65,560	67,100
CO	4,080	4,718	2.10	2.20	8,568	10,380
CT	4,432	4,309	2.40	2.30	10,637	9,911
DE	652	685	4.70	4.60	3,064	3,151
FL	11,499	12,972	2.00	2.40	22,998	31,133
GA	27,650	29,910	3.50	3.30	96,775	98,703
HI	876	863	2.60	2.50	2,278	2,158
ID	1,321	1,228	2.40	2.20	3,170	2,702
IL	3,532	4,056	1.70	1.70	6,004	6,895
IN	25,448	27,189	1.60	1.70	40,717	46,221
IA	26,502	27,965	1.60	1.60	42,403	44,744
KS	1,370	2,052	1.70	1.80	2,329	3,694
KY	4,050	4,700	2.20	2.30	8,910	10,810
LA	2,610	2,520	2.40	2.40	6,264	6,048
ME	7,073	6,900	2.10	2.40	14,853	16,560
MD	4,389	4,115	2.30	2.00	10,095	8,230
MA	773	704	2.20	2.20	1,701	1,549
MI	6,320	6,190	1.50	1.60	9,480	9,904
MN	14,995	14,730	1.50	1.90	22,493	27,987
MS	10,734	11,073	4.80	5.10	51,523	56,472
MO	8,350	9,445	2.50	2.80	20,875	26,446
MT	470	405	3.20	3.20	1,504	1,296
NE	11,493	12,126	2.10	2.10	24,135	25,465
NH	247	218	2.40	2.40	593	523
NJ	1,946	2,128	2.50	2.50	4,865	5,320
NM	1,404	1,406	1.70	1.90	2,387	2,671
NY	4,400	4,500	1.90	1.80	8,360	8,100
NC	17,281	17,175	4.60	4.60	79,493	79,005
ND	245	290	2.40	2.20	588	638
OH	33,860	34,798	2.00	2.00	67,720	69,596
OK	5,040	5,605	4.20	4.60	21,168	25,783
OR	3,350	3,591	2.10	1.80	7,035	6,464
PA	26,315	27,670	1.70	1.70	44,736	47,039
RI	95	90	1.70	1.70	162	153
SC	5,940	5,670	2.90	3.00	17,226	17,010
SD	2,345	2,550	2.20	2.20	5,159	5,610
TN	1,600	2,036	4.40	4.80	7,040	9,773
TX	21,300	22,700	2.60	2.60	55,380	59,020
UT	2,044	2,138	1.50	1.60	3,066	3,421
VT	197	203	3.00	2.90	591	589
VA	4,648	4,660	4.70	4.80	21,846	22,368
WA	6,937	6,867	1.80	1.90	12,487	13,047
WV	1,780	1,790	4.90	5.30	8,722	9,487
WI	4,693	5,025	2.20	2.30	10,325	11,558
WY	17	17	2.10	2.10	36	36
Oth Sts ²	308	312	1.90	2.00	586	624
US	392,737	410,030	2.65	2.72	1,039,071	1,113,183

¹ Excludes commercial broilers.

² AK, AZ and NV combined to avoid disclosure of individual operations.

Index

	Page
All Layers: Average Number on Hand During the Month, 30 Selected States, 1994	38
All Layers: Average Number on Hand During the Month, 30 Selected States, 1995	40
All Layers: Average Number on Hand During the Month, 30 Selected States, 1996	42
All Layers: Average Number on Hand During the Month, 30 Selected States, 1997	44
All Layers: Average Number on Hand During the Month by Type, United States, 1994-95	14
All Layers: Average Number on Hand During the Month by Type, United States, 1996-97	15
All Layers: Average Number on Hand During the Month by Type, 30 Selected States, 1994-95	18
All Layers: Average Number on Hand During the Month by Type, 30 Selected States, 1996-97	19
All Layers: Number on Hand First Day of the Month by Type, United States, 1994-95	14
All Layers: Number on Hand First Day of the Month by Type, United States, 1996-97	15
All Layers: Number on Hand First Day of the Month by Type, 30 Selected States, 1994-95	18
All Layers: Number on Hand First Day of the Month by Type, 30 Selected States, 1996-97	19
All Layers and Egg Production: Annual Average Number of Layers, Eggs per Layer, and Total Egg Production by State and United States, 1994-95	6
All Layers and Egg Production: Annual Average Number of Layers, Eggs per Layer, and Total Egg Production by State and United States, 1996-97	7
All Layers and Egg Production: Annual Average Number of Layers and Egg Production by Type, United States, 1994-97	5

Index (continued)

Page

Chickens: Layers on Hand, by State and United States, December 1, 1994-95	78
Chickens: Layers on Hand, by State and United States, December 1, 1996-97	79
Chickens: Number, Value per Head and Total Value, by State and United States, December 1, 1994-95	82
Chickens: Number, Value per Head and Total Value, by State and United States, December 1, 1996-97	83
Chickens: Number, Value per Head, Total Value, and Class, United States, December 1, 1994-97	5
Chickens: Pullets Not of Laying Age and Other Chickens, by State and United States, December 1, 1994-95	80
Chickens: Pullets Not of Laying Age and Other Chickens, by State and United States, December 1, 1996-97	81
Eggs: Annual Number of Eggs Produced by Type, State, and United States, 1994-95	8
Eggs: Annual Number of Eggs Produced by Type, State, and United States, 1996-97	9
Eggs: Number Laid per 100 For All Layers During the Month, 30 Selected States, 1994	46
Eggs: Number Laid per 100 For All Layers During the Month, 30 Selected States, 1995	48
Eggs: Number Laid per 100 For All Layers During the Month, 30 Selected States, 1996	50
Eggs: Number Laid per 100 For All Layers During the Month, 30 Selected States, 1997	52
Eggs: Number Laid per 100 Layers During the Month by Type, United States, 1994-95	22
Eggs: Number Laid per 100 Layers During the Month by Type, United States, 1996-97	23

Index (continued)

Page

Eggs: Number Laid per 100 Layers During the Month by Type, 30 Selected States, 1994-95	26
Eggs: Number Laid per 100 Layers During the Month by Type, 30 Selected States, 1996-97	27
Eggs: Number Laid per 100 Layers First Day of the Month by Type, United States, 1994-95	22
Eggs: Number Laid per 100 Layers First Day of the Month by Type, United States, 1996-97	23
Eggs: Number Laid per 100 Layers First Day of the Month by Type, 30 Selected States, 1994-95	26
Eggs: Number Laid per 100 Layers First Day of the Month by Type, 30 Selected States, 1996-97	27
Eggs: Production by Type During December, 30 Selected States, 1994-95	54
Eggs: Production by Type During December, 30 Selected States, 1996-97	55
Eggs: Production by Type During January, 30 Selected States, 1994-95	56
Eggs: Production by Type During January, 30 Selected States, 1996-97	57
Eggs: Production by Type During February, 30 Selected States, 1994-95	58
Eggs: Production by Type During February, 30 Selected States, 1996-97	59
Eggs: Production by Type During March, 30 Selected States, 1994-95	60
Eggs: Production by Type During March, 30 Selected States, 1996-97	61

Index (continued)

Page

Eggs: Production by Type During April, 30 Selected States, 1994-95	62
Eggs: Production by Type During April, 30 Selected States, 1996-97	63
Eggs: Production by Type During May, 30 Selected States, 1994-95	64
Eggs: Production by Type During May, 30 Selected States, 1996-97	65
Eggs: Production by Type During June, 30 Selected States, 1994-95	66
Eggs: Production by Type During June, 30 Selected States, 1996-97	67
Eggs: Production by Type During July, 30 Selected States, 1994-95	68
Eggs: Production by Type During July, 30 Selected States, 1996-97	69
Eggs: Production by Type During August, 30 Selected States, 1994-95	70
Eggs: Production by Type During August, 30 Selected States, 1996-97	71
Eggs: Production by Type During September, 30 Selected States, 1994-95	72
Eggs: Production by Type During September, 30 Selected States, 1996-97	73
Eggs: Production by Type During October, 30 Selected States, 1994-95	74
Eggs: Production by Type During October, 30 Selected States, 1996-97	75

Index (continued)

Page

Eggs: Production by Type During November, 30 Selected States, 1994-95	76
Eggs: Production by Type During November, 30 Selected States, 1996-97	77
Eggs: Production During the Month by Type, United States, 1994-95	10
Eggs: Production During the Month by Type, United States, 1996-97	11
Eggs: Production During the Month by Type, 30 Selected States, 1994-95	12
Eggs: Production During the Month by Type, 30 Selected States, 1996-97	13
Hatching Type Eggs: Number Laid per 100 Layers During the Month by Type, United States, 1994-95	24
Hatching Type Eggs: Number Laid per 100 Layers During the Month by Type, United States, 1996-97	25
Hatching Type Eggs: Number Laid per 100 Layers During the Month by Type, 30 Selected States, 1994-95	28
Hatching Type Eggs: Number Laid per 100 Layers During the Month by Type, 30 Selected States, 1996-97	29
Hatching Type Eggs: Number Laid per 100 Layers First Day of the Month by Type, United States, 1994-95	24
Hatching Type Eggs: Number Laid per 100 Layers First Day of the Month by Type, United States, 1996-97	25
Hatching Type Eggs: Number Laid per 100 Layers First Day of the Month by Type, 30 Selected States, 1994-95	28
Hatching Type Eggs: Number Laid per 100 Layers First Day of the Month by Type, 30 Selected States, 1996-97	29

Index (continued)

	Page
Hatching Type Eggs: Production During the Month by Type, United States, 1994-95	10
Hatching Type Eggs: Production During the Month by Type, United States, 1996-97	11
Hatching Type Eggs: Production During the Month by Type, 30 Selected States, 1994-95	12
Hatching Type Eggs: Production During the Month by Type, 30 Selected States, 1996-97	13
Hatching Type Layers: Average Number on Hand During the Month by Type, United States, 1994-95	16
Hatching Type Layers: Average Number on Hand During the Month by Type, United States, 1996-97	17
Hatching Type Layers: Average Number on Hand During the Month by Type, 30 Selected States, 1994-95	20
Hatching Type Layers: Average Number on Hand During the Month by Type, 30 Selected States, 1996-97	21
Hatching Type Layers: Number on Hand First Day of the Month by Type, United States, 1994-95	16
Hatching Type Layers: Number on Hand First Day of the Month by Type, United States, 1996-97	17
Hatching Type Layers: Number on Hand First Day of the Month by Type, 30 Selected States, 1994-95	20
Hatching Type Layers: Number on Hand First Day of the Month by Type, 30 Selected States, 1996-97	21
Table Egg Layers: Average Number in Flocks 30,000 and Above on Hand During the Month, 30 Selected States, 1994	30
Table Egg Layers: Average Number in Flocks 30,000 and Above on Hand During the Month, 30 Selected States, 1995	32
Table Egg Layers: Average Number in Flocks 30,000 and Above on Hand During the Month, 30 Selected States, 1996	34
Table Egg Layers: Average Number in Flocks 30,000 and Above on Hand During the Month, 30 Selected States, 1997	36