

Catfish Production

Released July 30, 2001, by the National Agricultural Statistics Service (NASS), Agricultural Statistics Board, U.S. Department of Agriculture. For information on "Catfish Production" call John Lange at (202) 720-0585, office hours 7:30 a.m. to 4:00 p.m. ET.

Foodfish Inventory Numbers Show Increase From Year Ago Levels

Commercial catfish operations in the four major producing States (Alabama, Arkansas, Louisiana, and Mississippi) had 370 million foodsize fish on hand on July 1, 2001, up 29 percent from the July 1, 2000 total of 288 million. The breakouts of foodsize fish inventory numbers on July 1, 2001, with their respective percent change from the previous year are: large foodsize, 6.17 million, up 54 percent; medium foodsize, 76.1 million, up 46 percent; and small foodsize, 287 million, up 24 percent.

The four major States also had 1.28 million broodfish on hand on July 1, 2001, up 1 percent from last year's 1.27 million.

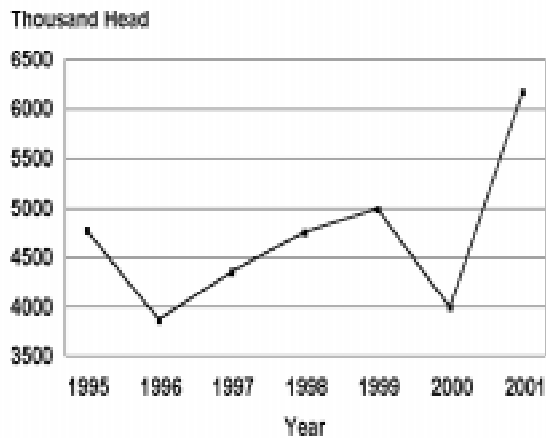
The number of large stockers on hand on July 1, 2001, totaled 331 million fish, down 14 percent from the 385 million fish on hand a year ago. There were 403 million small stockers, up 7 percent from last year.

Producers had 1.82 billion fingerlings and fry on hand on July 1, 2001, up 3 percent from the 1.76 billion on hand July 1, 2000. Live weight, at 22.0 million pounds, was down 10 percent from the 24.5 million pounds a year ago.

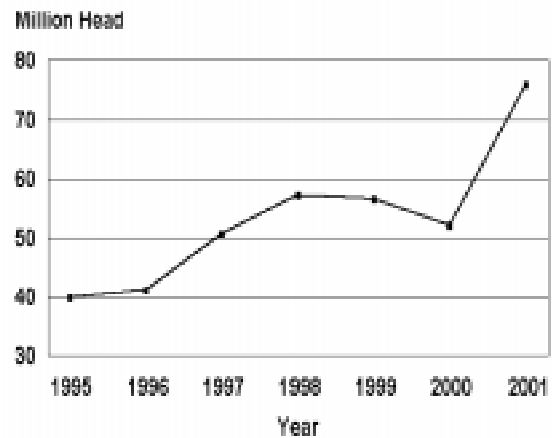
Water Acres Up 4 Percent

The water surface area to be used for catfish production during July 1 through December 31, 2001, totaled 185,700 acres, up 4 percent from a year ago. Of the total acres, 4,420 acres are to be renovated during the period from July 1, 2001 to December 31, 2001. Acres used for foodsize fish totaled 151,700 acres, up 5 percent from July 2000. Acres for broodfish were down 12 percent to 4,910 acres, while acres used for fingerling production increased 7 percent to 26,100 acres. An additional 2,910 acres are under construction and expected to be in use by January 1, 2002. During the January 1, 2001 through June 30, 2001 period, 4,420 acres were taken out of production. The total number of operations on July 1, 2001 in the four major states was 908, up 1 percent from the year ago total of 900.

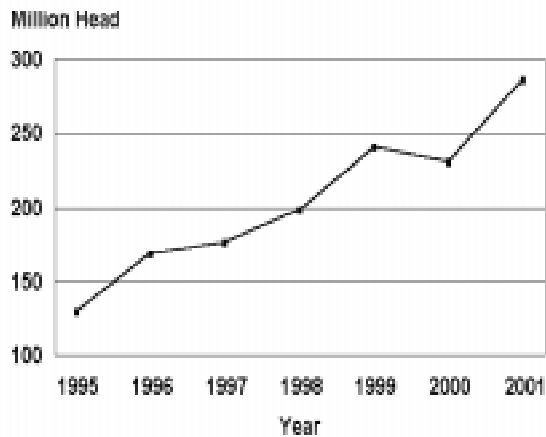
Catfish: Large Food Size Inventory
Four Major Producing States, July 1



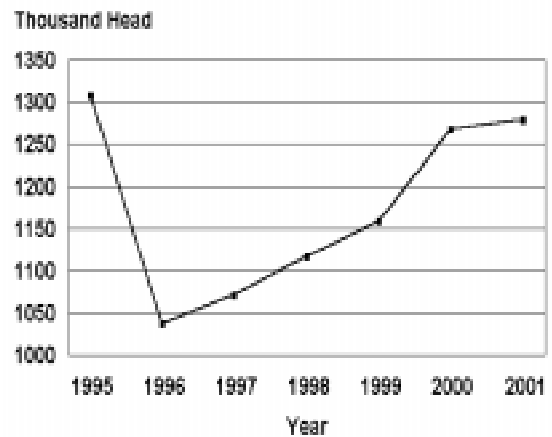
Catfish: Medium Food Size Inventory
Four Major Producing States, July 1



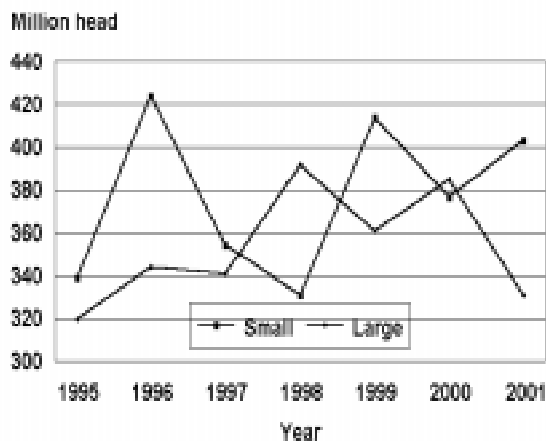
Catfish: Small Food Size Inventory
Four Major Producing States, July 1



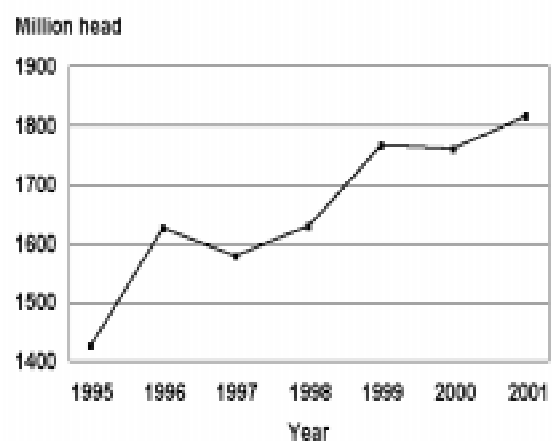
Catfish: Broodfish Inventory
Four Major Producing States, July 1



Catfish: Stocker Inventory
Four Major Producing States, July 1



Catfish: Fingerling & Fry Inventory
Four Major Producing States, July 1



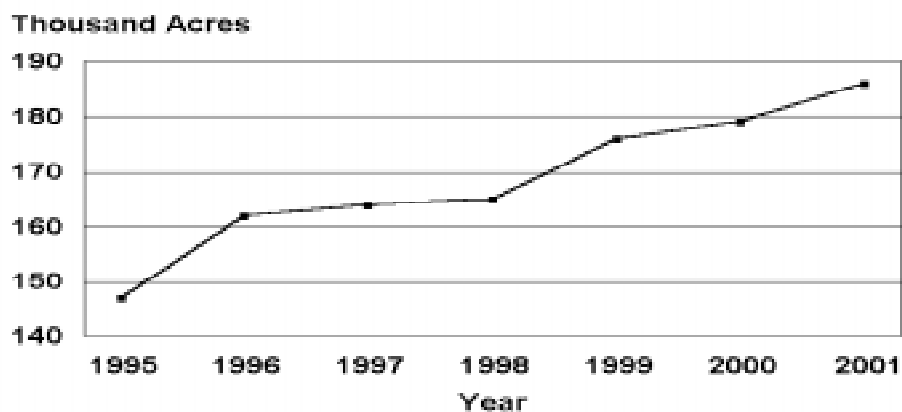
**Catfish: Number of Operations and Water Surface Acres, Used for
Production, 2000-2001, by State and United States**

State	Number of Operations on Jul 1		Water Surface Acres Used for Production During Jul 1 - Dec 31	
	2000	2001	2000	2001
	<i>Number</i>	<i>Number</i>	<i>Acres</i>	<i>Acres</i>
AL	260	270	22,800	26,000
AR	160	160	31,000	33,000
LA	80	78	13,900	13,200
MS	400	400	111,500	113,500
Four State Total	900	908	179,200	185,700

**Catfish Production: Water Surface Acre Usage,
by State and United States, 2000-2001**

State	Acres Intended for Utilization During Jul 1-Dec 31 for-					Acres Taken Out of Production During Jan 1-Jun 30
	Foodsize	Fingerlings	Broodfish	Currently Under or Scheduled for -		
				Renovation	New Construction	
2000						
AL	19,800	2,100	600	340	480	330
AR	25,000	4,500	1,100	800	800	300
LA	11,500	1,700	300	990	350	280
MS	88,800	16,100	3,600	3,000	2,100	1,300
Four State Total	145,100	24,400	5,600	5,130	3,730	2,210
2001						
AL	23,200	2,100	600	550	700	280
AR	27,000	5,000	750	700	500	650
LA	11,000	1,700	260	570	210	590
MS	90,500	17,300	3,300	2,600	1,500	2,900
Four State Total	151,700	26,100	4,910	4,420	2,910	4,420

**Water Acres Used for Production
Four Major Producing States, July 1**



**Catfish: Inventory by Size Category, by State
and United States, July 1, 2000-2001**

Size Category and State	Number of Fish		Live Weight			
			Total		Average per Fish	
	2000	2001	2000	2001	2000	2001
	----1,000----	----1,000----	1,000 Pounds	1,000 Pounds	----Pounds----	----Pounds----
Large Foodsize						
AL	870	1,170	2,790	3,900	3.2	3.3
AR	980	1,700	3,400	5,600	3.5	3.3
LA	790	860	2,520	2,750	3.2	3.2
MS	1,360	2,440	4,700	8,200	3.5	3.4
Four State Total	4,000	6,170	13,410	20,450	3.4	3.3
Medium Foodsize						
AL	10,600	14,800	20,000	27,400	1.9	1.9
AR	8,800	19,800	17,400	36,500	2.0	1.8
LA	8,350	8,300	14,100	15,700	1.7	1.9
MS	24,350	33,200	42,900	60,400	1.8	1.8
Four State Total	52,100	76,100	94,400	140,000	1.8	1.8
Small Foodsize						
AL	32,200	40,200	32,200	39,700	1.0	1.0
AR	33,800	40,200	35,300	40,200	1.0	1.0
LA	14,600	13,400	14,100	12,900	1.0	1.0
MS	150,800	193,500	146,200	192,600	1.0	1.0
Four State Total	231,400	287,300	227,800	285,400	1.0	1.0
Broodfish						
AL	150	160	840	890	5.6	5.6
AR	220	160	1,100	830	5.0	5.2
LA	64	50	280	292	4.4	5.8
MS	835	910	3,750	3,900	4.5	4.3
Four State Total	1,269	1,280	5,970	5,912	4.7	4.6

**Catfish: Inventory by Size Category, by State
and United States, July 1, 2000-2001 (continued)**

Size Category and State	Number of Fish		Live Weight			
			Total		Average per 1,000 Fish	
	2000	2001	2000	2001	2000	2001
	----1,000----	----1,000----	1,000 Pounds	1,000 Pounds	----Pounds----	----Pounds----
Large Stockers						
AL	36,700	40,900	17,000	17,900	463	438
AR	43,100	42,000	17,800	14,700	413	350
LA	16,700	23,600	6,650	7,760	398	329
MS	288,800	224,600	114,800	91,000	398	405
Four State Total	385,300	331,100	156,250	131,360	406	397
Small Stockers						
AL	24,400	30,700	2,850	3,600	117	117
AR	72,700	61,200	7,900	6,100	109	99.7
LA	9,600	11,100	1,230	990	128	89.2
MS	270,000	300,200	25,400	28,800	94.1	95.9
Four State Total	376,700	403,200	37,380	39,490	99.2	97.9
Fingerlings and Fry						
AL	110,000	118,500	1,760	1,860	16.0	15.7
AR	284,000	335,000	3,800	3,600	13.4	10.7
LA	99,500	114,800	1,940	1,420	19.5	12.4
MS	1,266,000	1,248,000	17,000	15,100	13.4	12.1
Four State Total	1,759,500	1,816,300	24,500	21,980	13.9	12.1

Catfish: Round Weight Processed, United States, by Month, 1992-2001

Census Bureau Weight Processed, United States, by Month, 1992-2001							
Year	Jan	Feb	Mar	Apr	May	Jun	
	<i>1,000 Pounds</i>	<i>1,000 Pounds</i>	<i>1,000 Pounds</i>	<i>1,000 Pounds</i>	<i>1,000 Pounds</i>	<i>1,000 Pounds</i>	
1992	36,200	39,228	45,048	41,177	39,111	36,813	
1993	40,327	40,277	43,521	39,920	37,030	35,496	
1994	36,714	35,035	40,446	34,494	34,163	34,595	
1995	38,807	38,515	42,200	36,588	37,030	36,047	
1996	38,475	38,004	46,376	38,557	39,517	36,752	
1997	42,409	45,067	48,431	45,721	43,409	42,282	
1998	46,723	47,606	53,761	49,393	45,218	46,244	
1999	48,723	48,891	56,310	46,830	47,703	48,445	
2000	50,552	50,942	56,856	48,781	48,424	48,011	
2001	46,999	50,257	57,766	52,478	51,736	47,883	
	Jul	Aug	Sep	Oct	Nov	Dec	Total
	<i>1,000 Pounds</i>	<i>1,000 Pounds</i>	<i>1,000 Pounds</i>	<i>1,000 Pounds</i>	<i>1,000 Pounds</i>	<i>1,000 Pounds</i>	<i>1,000 Pounds</i>
1992	36,128	37,958	37,857	39,212	35,073	33,562	457,367
1993	37,086	37,706	37,072	39,472	36,557	34,549	459,013
1994	35,901	39,813	38,716	39,072	36,054	34,266	439,269
1995	35,800	38,827	37,634	39,456	34,119	31,863	446,886
1996	39,025	40,463	38,807	42,070	37,203	36,874	472,123
1997	43,376	44,154	43,472	46,275	40,137	40,216	524,949
1998	46,383	47,739	46,579	47,904	43,224	43,581	564,355
1999	50,074	50,372	50,414	52,407	48,118	48,341	596,628
2000	49,023	53,204	49,422	51,412	45,535	41,441	593,603

**Catfish: Prices Paid to Producers by Processors,
United States, by Month, 1992-2001 ¹**

United States, by Month, 1992-2001							
Year	Jan	Feb	Mar	Apr	May	Jun	
	<i>Dollars per Pound</i>	<i>Dollars per Pound</i>	<i>Dollars per Pound</i>	<i>Dollars per Pound</i>	<i>Dollars per Pound</i>	<i>Dollars per Pound</i>	
1992	0.53	0.56	0.60	0.63	0.63	0.61	
1993	0.63	0.67	0.70	0.71	0.72	0.72	
1994	0.74	0.77	0.79	0.80	0.80	0.80	
1995	0.78	0.79	0.79	0.79	0.79	0.79	
1996	0.77	0.78	0.78	0.78	0.79	0.79	
1997	0.73	0.73	0.73	0.73	0.73	0.72	
1998	0.69	0.73	0.78	0.79	0.79	0.78	
1999	0.703	0.714	0.732	0.756	0.777	0.775	
2000	0.744	0.788	0.789	0.789	0.785	0.786	
2001	0.693	0.696	0.697	0.694	0.687	0.669	
	Jul	Aug	Sep	Oct	Nov	Dec	Annual Average
	<i>Dollars per Pound</i>	<i>Dollars per Pound</i>	<i>Dollars per Pound</i>	<i>Dollars per Pound</i>	<i>Dollars per Pound</i>	<i>Dollars per Pound</i>	<i>Dollars per Pound</i>
1992	0.59	0.58	0.59	0.61	0.62	0.63	0.598
1993	0.72	0.73	0.73	0.73	0.73	0.73	0.709
1994	0.80	0.80	0.80	0.77	0.77	0.77	0.784
1995	0.79	0.79	0.78	0.78	0.78	0.78	0.786
1996	0.79	0.78	0.77	0.76	0.75	0.73	0.773
1997	0.71	0.70	0.69	0.69	0.69	0.69	0.712
1998	0.76	0.74	0.73	0.71	0.70	0.70	0.743
1999	0.768	0.743	0.728	0.716	0.713	0.716	0.737
2000	0.760	0.741	0.727	0.710	0.696	0.682	0.751

¹ Price of fish delivered to processing plant door. Price includes charges for services provided by the processing plant, but does not include any adjustments based on year-end settlements.

Methodology and Definitions

Survey Procedures: All known catfish operators in the four survey states were contacted during the first half of July by mail, telephone, and personal interview.

Estimation Procedures: Sound statistical methodology was employed to derive the estimates from reported data. All data were analyzed for unusual values. Data from each operation were compared to their own past operating profile and to trends of similar operations. Data for missing operations were estimated based on similar operations or historical data.

Reliability: Catfish estimates are based on a census of all known active producers and, therefore, have no sampling variability. However, estimates may be subject to errors such as omissions, duplication, and mistakes in reporting, recording, and processing of the data. These errors are minimized through strict quality controls in the edit and summarization process and a careful review of all reported data for consistency and reasonableness.

Revision policy: Estimates for the previous year are subject to revision when current estimates are made. Revisions are the result of late or corrected data.

Definitions Used for Catfish Production:

Broodfish - Fish kept for egg production, including males. Broodfish produce the fertilized eggs which go to hatcheries. The most desirable size is 3 to 10 pounds or 4 to 6 years of age.

Large Foodsize - Fish weighing over 3 pounds.

Medium Foodsize - Fish weighing over one and one-half pounds to 3 pounds.

Small Foodsize - Fish weighing over three-fourths pound to one and one-half pounds.

Large Stockers - Fish weighing over 180 pounds to 750 pounds per 1,000 fish.

Small Stockers - Fish weighing over 60 pounds to 180 pounds per 1,000 fish.

Fingerlings/Fry - Fish weighing 60 pounds per 1,000 fish and less.

The next "Catfish Production" report will be released at 3 p.m. ET on February 7, 2002.

The United States Department of Agriculture (USDA) prohibits discrimination in all its programs on the basis of race, color, national origin, gender, religion, age, disability, political beliefs, sexual orientation, and marital or family status. (Not all prohibited bases apply to all programs.) Persons with disabilities who require alternative means for communication of program information (braille, large print, audiotape, etc.) should contact the USDA's TARGET Center at 202-720-2600 (voice and TDD).

To file a complaint of discrimination, write USDA, Director, Office of Civil Rights, Room 326-W, Whitten Building, 1400 Independence Avenue, SW, Washington, D.C., 20250-9410, or call 202-720-5964 (voice or TDD). USDA is an equal opportunity provider and employer.

ACCESS TO REPORTS!!

For your convenience, there are several ways to obtain NASS reports, data products, and services:

INTERNET ACCESS

All NASS reports are available free of charge on the worldwide Internet. For access, connect to the Internet and go to the NASS Home Page at: <http://www.usda.gov/nass/>. Select "Today's Reports" or Publications and then Reports by Calendar or Publications and then Search, by Title or Subject.

E-MAIL SUBSCRIPTION

There are two options for subscribing via e-mail. All NASS reports are available by subscription free of charge direct to your e-mail address. 1) Starting with the NASS Home Page at <http://www.usda.gov/nass/>, click on **Publications**, then click on the **Subscribe by E-mail** button which takes you to the page describing e-mail delivery of reports. Finally, click on **Go to the Subscription Page** and follow the instructions. 2) If you do NOT have Internet access, send an e-mail message to: usda-reports@usda.mannlib.cornell.edu. In the body of the message type the word: **list**.

AUTOFAX ACCESS

NASSFax service is available for some reports from your fax machine. Please call 202-720-2000, using the handset attached to your fax. Respond to the voice prompts. Document 0411 is a list of available reports.

----- PRINTED REPORTS OR DATA PRODUCTS

CALL OUR TOLL-FREE ORDER DESK: 800-999-6779 (U.S. and Canada)
Other areas, please call 703-605-6220 FAX: 703-605-6900
(Visa, MasterCard, check, or money order acceptable for payment.)

ASSISTANCE

For **assistance** with general agricultural statistics or further information about NASS or its products or services, contact the **Agricultural Statistics Hotline** at **800-727-9540**, 7:30 a.m. to 4:00 p.m. ET, or e-mail: nass@nass.usda.gov.