

Catfish Production

Released July 26, 2007, by the National Agricultural Statistics Service (NASS), Agricultural Statistics Board, U.S. Department of Agriculture. For information on *Catfish Production* call Toby Paterson at (202) 720-3570, office hours 7:30 a.m. to 4:00 p.m. ET.

Foodfish Inventory Numbers Down 11 Percent From a Year Ago

Commercial catfish operations in the four major producing States (Alabama, Arkansas, Louisiana, and Mississippi) had 260 million foodsize fish on hand on July 1, 2007, down 11 percent from the July 1, 2006 total of 291 million foodsize fish. The breakouts of foodsize fish inventory numbers on July 1, 2007, with their respective percent change from the previous year were: large foodsize, 6.19 million fish, down 13 percent; medium foodsize, 67.3 million fish, down 9 percent; and small foodsize, 187 million fish, down 11 percent.

The four major States also had 791 thousand broodfish on hand on July 1, 2007, down 15 percent from last year's 930 thousand broodfish.

The number of large stockers on hand on July 1, 2007, totaled 320 million fish, up 6 percent from the 301 million fish on hand a year ago. There were 326 million small stockers, down 3 percent from last year.

Producers had 1.45 billion fingerlings and fry on hand on July 1, 2007, down slightly from the 1.46 billion fingerlings and fry on hand July 1, 2006. Live weight, at 20.3 million pounds, was down 12 percent from the 23.2 million pounds a year ago.

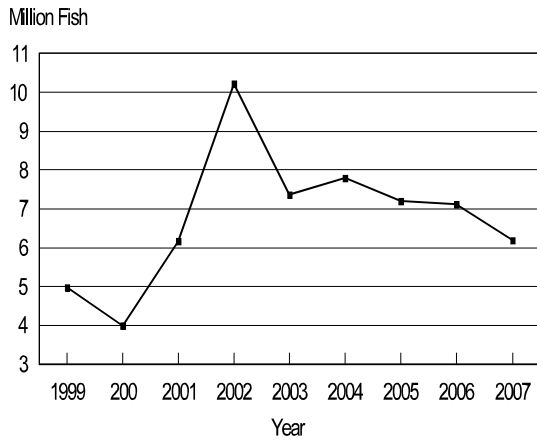
Water Acres Down 3 Percent

The water surface area to be used for catfish production during July 1 through December 31, 2007, totaled 151 thousand acres, down 3 percent from a year ago. Acres used for foodsize fish totaled 122 thousand acres, down 2 percent from the same time period in 2006. Acres for broodfish decreased 6 percent to 3.64 thousand acres, and acres used for fingerling production decreased 10 percent to 21.1 thousand acres. Acres taken out of production during the January 1, 2007 through June 30, 2007 period totaled 3.86 thousand acres, while 4.13 thousand acres of the total in production were scheduled to be renovated from July 1, 2007 to December 31, 2007. The number of operations on July 1, 2007 in the four major States totaled 713, down 5 percent from last year's total of 753 operations.

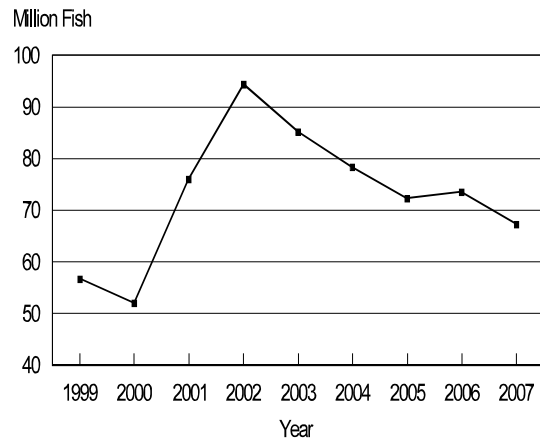
Special Note

Two tables, which were included in previous year's *Catfish Production* reports, were removed from this year's publication. The tables removed were round weight of catfish processed and prices paid to catfish producers by processors. To access these data in the future, refer to the monthly *Catfish Processing* report.

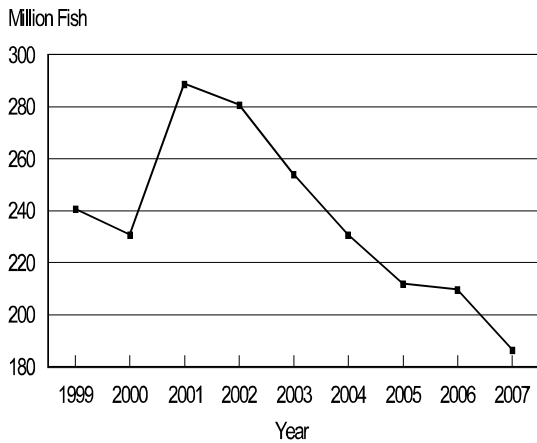
Catfish: Large Foodsize Inventory
Four Major Producing States, July 1



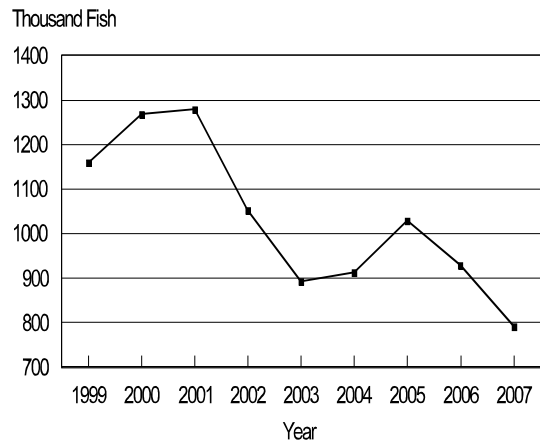
Catfish: Medium Foodsize Inventory
Four Major Producing States, July 1



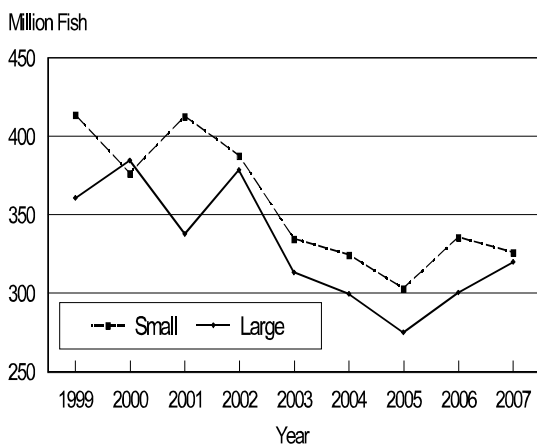
Catfish: Small Foodsize Inventory
Four Major Producing States, July 1



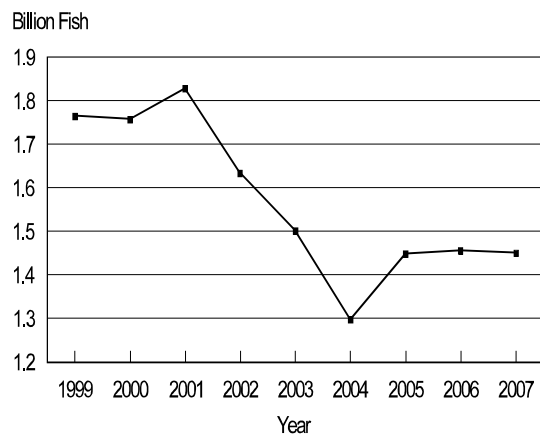
Catfish: Broodfish Inventory
Four Major Producing States, July 1



Catfish: Stocker Inventory
Four Major Producing States, July 1



Catfish: Fingerling & Fry Inventory
Four Major Producing States, July 1



**Catfish: Number of Operations and Water Surface Acres, Used for
Production, 2006-2007, by State and United States**

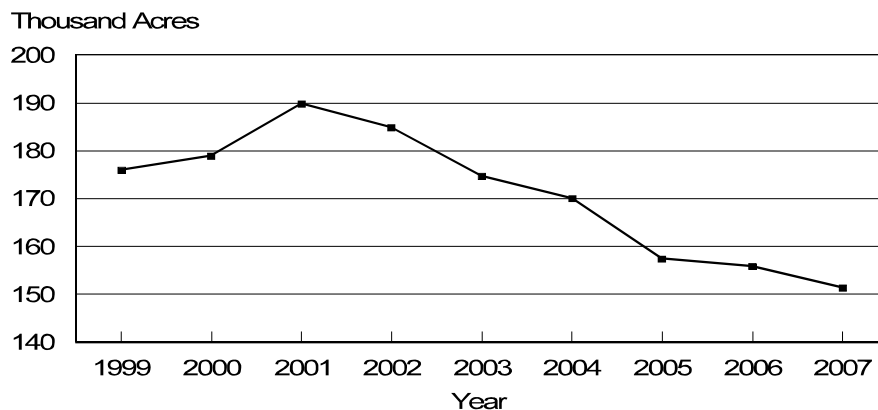
State	Number of Operations on Jul 1		Water Surface Acres Used for Production During Jul 1 - Dec 31	
	2006	2007	2006	2007
	<i>Number</i>	<i>Number</i>	<i>Acres</i>	<i>Acres</i>
AL	217	203	24,300	23,000
AR	132	131	30,000	30,400
LA	24	19	5,700	5,500
MS	380	360	96,000	92,500
Four State Total	753	713	156,000	151,400

**Catfish Production: Water Surface Acre Usage,
by State and United States, 2006-2007**

State	Acres Intended for Utilization During Jul 1-Dec 31 for-					Acres Taken Out of Production During Jan 1-Jun 30
	Foodsize	Fingerlings	Broodfish	Currently Under or Scheduled for -		
				Renovation	New Construction	
	<i>Acres</i>	<i>Acres</i>	<i>Acres</i>	<i>Acres</i>	<i>Acres</i>	<i>Acres</i>
2006						
AL	21,800	1,200	400	950	330	410
AR	24,500	4,100	560	630	*	940
LA	4,900	600	100	140		730
MS	73,000	17,500	2,800	4,000	200	2,400
Four State Total	124,200	23,400	3,860	5,720	*	4,480
2007						
AL	21,700	680	420	380	115	750
AR	26,000	3,800	*	280	*	670
LA	4,800	610	*	370	*	140
MS	69,700	16,000	2,600	3,100	300	2,300
Four State Total	122,200	21,090	3,640	4,130	495	3,860

* Not published to avoid disclosure of individual operations.

**Water Acres Used for Production
Four Major Producing States, July 1**



**Catfish: Inventory by Size Category, by State
and United States, July 1, 2006-2007**

Size Category and State	Number of Fish		Live Weight			
			Total		Average per Fish	
	2006	2007	2006	2007	2006	2007
	<i>1,000</i>	<i>1,000</i>	<i>1,000 Pounds</i>	<i>1,000 Pounds</i>	<i>Pounds</i>	<i>Pounds</i>
Large Foodsize						
AL	3,400	1,500	11,700	5,200	3.4	3.5
AR	1,230	1,520	4,500	5,200	3.7	3.4
LA	195	171	670	571	3.4	3.3
MS	2,300	3,000	8,000	10,100	3.5	3.4
Four State Total	7,125	6,191	24,870	21,071	3.5	3.4
Medium Foodsize						
AL	18,100	11,800	34,100	22,800	1.9	1.9
AR	13,200	17,100	25,600	34,000	1.9	2.0
LA	1,860	1,230	3,250	2,700	1.7	2.2
MS	40,500	37,200	73,500	69,600	1.8	1.9
Four State Total	73,660	67,330	136,450	129,100	1.9	1.9
Small Foodsize						
AL	47,200	31,400	44,900	30,000	1.0	1.0
AR	34,900	37,100	34,800	37,200	1.0	1.0
LA	3,950	8,110	3,450	8,100	0.9	1.0
MS	124,000	110,000	125,000	108,000	1.0	1.0
Four State Total	210,050	186,610	208,150	183,300	1.0	1.0
Total Foodsize						
AL	68,700	44,700	90,700	58,000		
AR	49,330	55,720	64,900	76,400		
LA	6,005	9,511	7,370	11,371		
MS	166,800	150,200	206,500	187,700		
Four State Total	290,835	260,131	369,470	333,471		
Broodfish						
AL	80	*	360	*	4.5	*
AR	130	108	590	489	4.5	4.5
LA	20	*	100	*	5.0	*
MS	700	600	3,300	3,000	4.7	5.0
Four State Total	930	791	4,350	3,829	4.7	4.8

* Not published to avoid disclosure of individual operations.

**Catfish: Inventory by Size Category, by State
and United States, July 1, 2006-2007 (continued)**

Size Category and State	Number of Fish		Live Weight			
			Total		Average per 1,000 Fish	
	2006	2007	2006	2007	2006	2007
	<i>1,000</i>	<i>1,000</i>	<i>1,000 Pounds</i>	<i>1,000 Pounds</i>	<i>Pounds</i>	<i>Pounds</i>
Large Stockers						
AL	72,100	82,400	26,900	31,300	373	380
AR	37,500	31,800	12,000	10,700	320	337
LA	2,290	1,850	1,140	837	498	452
MS	189,000	204,000	76,600	90,000	405	441
Four State Total	300,890	320,050	116,640	132,837	388	415
Small Stockers						
AL	67,700	54,600	7,000	7,100	103.0	130.0
AR	60,700	48,400	5,830	4,500	96.0	93.0
LA	3,420	1,290	315	175	92.1	136.0
MS	204,000	222,000	19,700	21,600	96.6	97.3
Four State Total	335,820	326,290	32,845	33,375	97.8	102.0
Total Stockers						
AL	139,800	137,000	33,900	38,400		
AR	98,200	80,200	17,830	15,200		
LA	5,710	3,140	1,455	1,012		
MS	393,000	426,000	96,300	111,600		
Four State Total	636,710	646,340	149,485	166,212		
Fingerlings and Fry						
AL	74,000	73,200	1,100	1,300	14.9	17.8
AR	299,000	239,000	5,000	3,700	16.7	15.5
LA	34,100	29,000	277	282	8.1	9.7
MS	1,050,000	1,111,500	16,800	15,000	16.0	13.5
Four State Total	1,457,100	1,452,700	23,177	20,282	15.9	14.0

Reliability of Catfish Production Estimates

Survey Procedures: Data for catfish production are collected from all known producers. Individual NASS field offices maintain a list of all known catfish producers and use known sources of producers to update their lists. All known catfish producers are mailed a questionnaire as close as possible to July 1 and given adequate time to respond by mail. Those that do not respond by mail are telephoned or possibly enumerated in person during the middle of July. Care is exercised to ensure all operations are accounted for.

Estimation Procedures: Sound statistical methodology is employed to derive the estimates from reported data. All data are analyzed for unusual values. Data from each operation are compared to their own past operating profile and to trends from similar operations. Data for missing operations were estimated based on similar operations or historical data. NASS field offices prepare these estimates by using a combination of survey indications and historic trends. Individual State estimates are reviewed by the Agricultural Statistics Board for reasonableness.

Revision policy: Estimates for the previous year are subject to revision when current estimates are made. Revisions are the result of late or corrected data.

Reliability: Catfish production estimates are based on a census of all known active producers and therefore, have no sampling variability. However, estimates are subject to errors such as omissions, duplication, and mistakes in reporting, recording, and processing the data. While these errors cannot be measured directly, they are minimized through strict quality controls in the data collection process and a careful review of all reported data for consistency and reasonableness.

Terms and Definitions Used for Catfish Production Estimates

Broodfish - Fish kept for egg production, including males. Broodfish produce the fertilized eggs which go to hatcheries. The most desirable size is 3 to 10 pounds or 4 to 6 years of age.

Large foodsize - Fish weighing over 3 pounds.

Medium foodsize - Fish weighing over one and one-half pounds to 3 pounds.

Small foodsize - Fish weighing over three-fourths of a pound to one and one-half pounds.

Large stockers - Fish weighing over 180 pounds to 750 pounds per 1,000 fish.

Small stockers - Fish weighing over 60 pounds to 180 pounds per 1,000 fish or over 6 inches in length.

Fingerlings - Fish weighing 2 to 60 pounds per 1,000 fish or 2 to 6 inches in length.

Fry - Fish weighing less than 2 pounds per 1,000 fish or less than 2 inches in length.

Information Contacts

Listed below are the commodity specialists in the Livestock Branch of the National Agricultural Statistics Service to contact for additional information.

Dan Kerestes, Chief, Livestock Branch (202) 720-3570

Darin Jantzi, Head, Poultry and Specialty Commodities Section (202) 720-3570

David Colwell - Cold Storage (202) 720-8784

Fleming Gibson - Egg Products, Poultry Slaughter, Catfish Processing, Mink (202) 690-3237

Darin Jantzi - Layers, Eggs (202) 720-3570

Sharyn Lavender - Broiler Hatchery, Chicken Hatchery, Honey (202) 720-3244

Toby Paterson - Catfish Production, Trout Production, Census of Aquaculture,
Turkey Hatchery, Turkeys Raised (202) 720-0585

ACCESS TO REPORTS!!

For your convenience, there are several ways to obtain NASS reports, data products, and services:

INTERNET ACCESS

All NASS reports are available free of charge on the worldwide Internet. For access, connect to the Internet and go to the NASS Home Page at: **www.nass.usda.gov**.

E-MAIL SUBSCRIPTION

All NASS reports are available by subscription free of charge direct to your e-mail address. Starting with the NASS Home Page at **www.nass.usda.gov**, under the right navigation, *Receive reports by Email*, click on **National** or **State**. Follow the instructions on the screen.

PRINTED REPORTS OR DATA PRODUCTS

CALL OUR TOLL-FREE ORDER DESK: 800-999-6779 (U.S. and Canada)
Other areas, please call 703-605-6220 FAX: 703-605-6900
(Visa, MasterCard, check, or money order acceptable for payment.)

ASSISTANCE

For **assistance** with general agricultural statistics or further information about NASS or its products or services, contact the **Agricultural Statistics Hotline** at **800-727-9540**, 7:30 a.m. to 4:00 p.m. ET, or e-mail: **nass@nass.usda.gov**.

The U.S. Department of Agriculture (USDA) prohibits discrimination in all its programs and activities on the basis of race, color, national origin, age, disability, and where applicable, sex, marital status, familial status, parental status, religion, sexual orientation, genetic information, political beliefs, reprisal, or because all or a part of an individual's income is derived from any public assistance program. (Not all prohibited bases apply to all programs.) Persons with disabilities who require alternative means for communication of program information (Braille, large print, audiotape, etc.) should contact USDA's TARGET Center at (202) 720-2600 (voice and TDD).

To file a complaint of discrimination, write to USDA, Director, Office of Civil Rights, 1400 Independence Avenue, S.W., Washington, D.C. 20250-9410, or call (800) 795-3272 (voice) or (202) 720-6382 (TDD). USDA is an equal opportunity provider and employer.