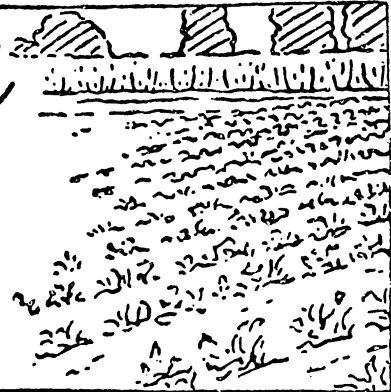


TC-54: 1103

Commercial Vegetables

U. S. DEPARTMENT OF AGRICULTURE
AGRICULTURAL MARKETING SERVICE
CROP REPORTING BOARD



Release: 3:00 EST
November 10, 1954

Washington, D. C.

VEGETABLES FOR COMMERCIAL PROCESSING GENERAL SUMMARY OF PRELIMINARY ACREAGE AND NOVEMBER 1 INDICATED PRODUCTION

The 1954 production of 10 important vegetables for processing is estimated at 5.55 million tons according to the Crop Reporting Board. This compares with 6.38 million tons harvested last year and an average of 5.56 million tons for the 1943-52 period.

The tonnages of green peas, spinach and tomatoes are less than average but this is nearly offset by above-average production for each of the other 7 crops for which estimates are now available. A record high production of snap beans is estimated for 1954; for the other crops less tonnage is estimated for 1954 than was obtained in 1953.

The 10 crops usually represent about 97 percent of the total tonnage of the 11 vegetables for processing which are estimated by the Crop Reporting Board. The items not included in the November 1 estimates are asparagus for processing and open market purchases of kraut cabbage. Estimates for these two items will be available on December 17.

VEGETABLES FOR COMMERCIAL PROCESSING: General summary of preliminary acreage and indicated production, by crops, United States, November 1, 1954 with comparisons

CROP	PLANTED ACREAGE			HARVESTED ACREAGE			PRODUCTION		
	10-year		1954	10-year		1954	10-year		
	average	1953	Prelim-	average	1953	Prelim-	average	1953	Indicated
	1943-52	Revised:	inary	1943-52	Revised:	inary	1943-52	Revised:	1954
	- Acres -			- Acres -			- Tons -		
Beans, Lima (shelled).....	89,020:	113,91Q	117,20Q	83,160:	109,71Q	111,60Q	63,020:	106,56Q	102,24Q
Beans, Snap 1/.....	134,000:	148,69Q	160,39Q	127,350:	140,19Q	155,85Q	232,300:	304,58Q	342,50Q
Beets 1/.....	17,580:	17,21Q	16,90Q	16,410:	16,50Q	16,10Q	141,200:	158,90Q	142,50Q
Cabbage for Kraut (Contract) 1/:	10,200:	11,70Q	10,58Q	9,320:	11,33Q	10,32Q	90,400:	129,15Q	111,10Q
Corn, Sweet (in husk) 1/.....	503,130:	529,01Q	489,90Q	467,630:	506,94Q	465,05Q	1205,400:1,	519,90Q1,	465,70Q
Cucumbers for Pickles 2/.....	133,780:	160,09Q	148,53Q	120,940:	140,52Q	140,27Q	232,560:	329,86Q	298,92Q
Peas, Green (shelled) 1/.....	462,890:	464,82Q	451,20Q	430,600:	430,90Q	422,96Q	433,050:	464,19Q	397,92Q
Pimientos 2/.....	16,210:	26,60Q	30,20Q	15,640:	26,50Q	28,90Q	17,400:	33,43Q	21,67Q
Spinach	:	:	:	:	:	:	:	:	:
Winter and Spring.....	32,360:	25,41Q	23,70Q	27,850:	23,01Q	19,73Q	81,130:	88,73Q	72,28Q
Fall.....	14,780:	6,03Q	7,79Q	10,920:	4,13Q	5,81Q	33,170:	18,47Q	22,70Q
Tomatoes 1/.....	465,600:	301,20Q	265,50Q	448,500:	295,10Q	265,20Q	3038,600:3,	228,83Q2,	573,55Q
TOTALS - Crops for which 1954	:	:	:	:	:	:	:	:	:
production has been estimated:	1,877,400:	1,804,67Q	1,721,89Q	1,757,120:	1,712,83Q	1,641,79Q	5559,220:	6,382,60Q	5,551,08Q
Asparagus for Processing 3/...	79,840:	89,24Q	Dec. 30	79,840:	89,24Q	Dec. 17	97,600:	93,78Q	Dec. 17
Cabbage, for Kraut (Open	:	:	:	:	:	:	:	:	:
Market) 3/.....	8,100:	5,85Q	Dec. 30	8,090:	5,85Q	Dec. 17	86,700:	83,45Q	Dec. 17
TOTALS -	:	:	:	:	:	:	:	:	:
11 CROPS FOR PAST SEASONS.....	1,965,340:	1,899,76Q	Dec. 30	1,845,050:	1,807,92Q	Dec. 17	5743,520:	6,559,83Q	Dec. 17
1/ From previous releases.	2/ Revised estimate for 1953 and preliminary estimate for 1954.								

3/ For indicated 1954 production of all asparagus (fresh market plus processing) see report TC-54: 601.
For indicated production of all cabbage (fresh market plus kraut) see report TC-54: 1101.

TC-54: 1104 November 10, 1954

Preliminary Estimate, 1954, with Comparisons

A total of 102,240 tons of green lima beans for processing was harvested in 1954, according to the Crop Reporting Board. This preliminary estimate compares with 106,560 tons in 1953; and an average production of 63,020 tons for the 1943-52 period.

This year's average yield of 1,832 pounds compares with 1,942 pounds obtained in 1953 and an average of 1,452 pounds for the 1943-52 period.

The 1954 production of lima beans for freezing is 69,320 tons. Last year 74,380 tons were produced for freezing. The production for canning and other processing in 1954 was 32,920 tons. This compares with 32,180 tons for 1953.

STATE	HARVESTED ACREAGE			YIELD PER ACRE			PRODUCTION		
	10-year:			10-yr.:			10-year:		
	average: 1953 : 1954			av. : 1953 : 1954			average: 1953 : 1954		
	1943-52: Revised:	1943-52: Prelim.	1943-52: Prelim.	43-52: Rev.	43-52: Prelim.	43-52: Prelim.	1943-52: Revised:	1943-52: Prelim.	1943-52: Prelim.
	- Acres -			- Pounds (shelled) -			- Tons (shelled) -		
New York.....	1,930:	3,800:	4,200:	1,200:	1,660:	1,540:	1,290:	3,150:	3,230
Pennsylvania....	3,430:	5,200:	4,400:	1,210:	1,250:	1,150:	2,230:	3,250:	2,530
Ohio.....	520:	600:	800:	840:	970:	840:	380:	290:	340
Michigan.....	2,610:	2,450:	2,000:	1,010:	1,230:	1,390:	1,370:	1,510:	1,390
Wisconsin.....	4,770:	8,100:	7,600:	1,300:	1,630:	1,960:	3,240:	6,600:	7,450
Delaware.....	16,250:	21,500:	23,500:	1,300:	1,520:	1,410:	11,040:	16,340:	16,570
Maryland.....	4,030:	5,000:	5,800:	1,160:	1,200:	1,280:	2,430:	3,000:	3,710
Virginia.....	4,020:	4,700:	4,300:	1,090:	1,300:	1,100:	2,300:	3,060:	2,360
Washington.....	1,170:	630:	1,400:	1,770:	2,720:	1,430:	1,060:	860:	1,000
California.....	14,970:	27,600:	28,100:	2,280:	2,920:	2,800:	18,580:	40,300:	39,340
Other States 1/	29,060:	30,130:	29,500:	1,312:	1,872:	1,649:	19,100:	28,200:	24,320
2. TOTAL	83,160:	109,710:	111,600:	1,452:	1,942:	1,832:	63,020:	106,560:	102,240
For freezing.....	2,760:	66,910:	69,720:	2,116:	2,223:	1,989:	26,660:	74,380:	69,320
For canning and:									
Other process-									
ing.....	2/33,830:	42,800:	41,880:	2/1,548:	1,504:	1,572:	26,190:	32,180:	32,920
Arkansas, Colorado, Idaho, Illinois, Indiana, Iowa, Kansas, Minnesota, Missouri, New Jersey, Oklahoma, Oregon, Tennessee and Utah.									

1952. Estimates not available prior to 1952.

UNITED STATES DEPARTMENT OF AGRICULTURE
AGRICULTURAL MARKETING SERVICE
CROP REPORTING BOARD
WASHINGTON, D. C.

TC-54: 1105 November 10, 1954

CUCUMBERS FOR PICKLES
ACREAGE AND PRODUCTION

Preliminary Estimate, 1954, with Comparisons

(Vegetables for Commercial Processing)

Preliminary estimates by the Crop Reporting Board places the 1954 production of cucumbers for pickles at 12,455,000 bushels. This compares with 13,744,000 bushels produced in 1953 and an average of 9,690,000 bushels for the 1943-52 period.

The revised estimate of acreage planted in 1954 to cucumbers for pickles is 148,530 acres which compares with 160,090 acres planted in 1953. The preliminary estimate of acreage harvested in 1954 is 140,270 acres. Last year 148,520 acres were harvested. The loss of acreage this year is about 6 percent, whereas in 1953, loss or abandonment amounted to 7 percent.

The preliminary estimate of yield per acre for 1954 is 89 bushels. This compares with 93 bushels obtained in 1953 and an average of 79 bushels for the 1943-52 period.

These estimates of pickling cucumbers include pickles sterilized in glass or tin containers but do not include green cucumbers processed as "over night" and similar type pickles.

PRELIMINARY ESTIMATE, ACREAGE AND PRODUCTION, 1954, with Comparisons

STATE	HARVESTED ACREAGE			YIELD PER ACRE			PRODUCTION		
	10-year:			10-yr.:			10-year:		
	average:	1953	1954	av.	1953	1954	average:	1953	1954
	1943-52	Revised	Prelim.	43-52	Rev.	Prelim.	1943-52	Revised	Prelim.
	- Acres -			- Bushels -			- 1,000 bushels -		
Maine.....	590:	590:	500:	116:	145:	84:	69:	86:	41
Massachusetts..	710:	860:	950:	155:	195:	200:	110:	168:	190
New York.....	1,270:	1,870:	1,500:	90:	101:	107:	117:	189:	160
Ohio.....	2,340:	2,680:	2,300:	89:	134:	164:	209:	359:	377
Indiana.....	4,380:	3,500:	2,600:	65:	105:	112:	272:	368:	291
Illinois.....	950:	300:	300:	59:	93:	100:	54:	28:	30
Michigan.....	36,470:	39,700:	36,200:	59:	85:	87:	2,196:	3,374:	3,149
Wisconsin.....	19,850:	24,000:	23,400:	77:	82:	72:	1,522:	1,968:	1,685
Minnesota.....	1,700:	1,800:	1,900:	70:	79:	98:	121:	142:	186
Iowa.....	710:	500:	650:	61:	60:	74:	43:	30:	48
Missouri.....	890:	900:	400:	66:	74:	85:	60:	67:	34
Delaware.....	1,260:	1,100:	1,300:	78:	70:	59:	100:	77:	77
Maryland.....	4,140:	3,000:	3,400:	62:	128:	122:	380:	384:	415
Virginia.....	4,920:	6,900:	7,300:	71:	63:	48:	346:	435:	350
North Carolina..	8,200:	15,300:	16,000:	82:	81:	65:	676:	1,239:	1,040
South Carolina..	2,380:	2,300:	2,400:	84:	30:	45:	199:	69:	1
Georgia.....	5,560:	9,200:	8,000:	63:	50:	75:	348:	460:	600
Texas.....	3,570:	6,500:	5,200:	54:	73:	45:	196:	474:	234
Colorado.....	2,340:	2,950:	2,300:	191:	234:	211:	461:	690:	485
Washington.....	850:	1,300:	1,200:	185:	152:	141:	159:	198:	169
Oregon.....	1,430:	1,300:	1,200:	153:	135:	101:	217:	176:	121
California.....	3,020:	4,000:	3,100:	301:	360:	394:	914:	1,440:	1,221
Other States ^{1/} :	13,420:	17,970:	18,170:	67:	74:	79:	923:	1,323:	1,443
U. S. TOTAL	120,940:	148,520:	140,270:	79:	93:	89:	9,690:	13,744:	12,455

^{1/} Alabama, Arizona, Arkansas, Connecticut, Florida, Kansas, Kentucky, Louisiana, Mississippi, Nebraska, New Hampshire, New Jersey, Oklahoma, Pennsylvania, South Dakota, Tennessee and Utah.

UNITED STATES DEPARTMENT OF AGRICULTURE
 AGRICULTURAL MARKETING SERVICE
 CROP REPORTING BOARD
 WASHINGTON, D. C.

- 3 -

TC-54: 1105 November 10, 1954

CUCUMBERS FOR PICKLES
 STOCKS IN TANKS AND BARRELS
 OCTOBER 1, 1954, with comparisons

October 1, 1954 stocks of salt and dill pickles in tanks and barrels are estimated at 12,834,000 bushels, according to the Crop Reporting Board. This is 2 percent above the October 1, 1953 holdings of 12,583,000 bushels. The 1943-52 average stocks are 9,305,000 bushels. Holdings from the current crop were smaller this year than last but this was more than offset by increased holdings from previous crops.

Taking into account both the estimated stocks and the 1954 production of 12,455,000 bushels, the indicated disappearance for the year ending October 1, 1954 is 12,204,000 bushels. This compares with 12,328,000 bushels for 1953 and the 1943-52 average disappearance of 9,438,000 bushels. The figures on stocks cover only salt and dill pickles in tanks and barrels; they do not include packers' holdings of fresh pasteurized products. The indicated disappearance figures include quantities used fresh or partly fermented for the pasteurized pack as well as cured salt stock.

Stocks of Pickles in Tanks and Barrels, Both Sold and Unsold,
 October 1, 1954, with Comparisons

YEAR	From crop of		From previous		Total	
	current year		crops		Stocks	
	Salt	Dill	Salt	Dill	October 1	
					- 1,000 bushels -	
10-year Average						
1943-52	6,954	468	1,852	30	9,305	
1953 Revised	9,515	545	2,481	42	12,583	
1954 Preliminary	8,947	509	3,374	4	12,834	

UNITED STATES DEPARTMENT OF AGRICULTURE
 AGRICULTURAL MARKETING SERVICE
 CROP REPORTING BOARD
 WASHINGTON, D. C.

TC-54: 1106 November 10, 1954

PIMIENTOS FOR PROCESSING
 ACREAGE AND PRODUCTION

Preliminary Estimates, 1954, with Comparisons

(Vegetables for Commercial Processing)

Preliminary estimates place the 1954 production of pimientos for processing at 21,670 tons. According to the Crop Reporting Board this is only about two-thirds of last year's production of 33,430 tons.

The estimate of acreage harvested in 1954 is 28,900 acres. Last year, 26,500 acres were harvested. The yield per acre in 1954 is estimated at 0.75 tons. Hot, dry weather which prevailed in the Southeastern States during the growing season reduced this year's yield per acre to the lowest point in recent years. Frost on November 1 stopped harvest in all Georgia areas. This year's yield compares with 1.26 tons obtained per acre last year and an average of 1.11 tons for the 1943-52 period.

STATE	HARVESTED ACREAGE			YIELD PER ACRE			PRODUCTION		
	10-year:			10-year:			10-year:		
	average: 1953 : 1954			average: 1953 : 1954			average: 1953 : 1954		
	1943-52: Revised: Prelim.			1943-52: Rev.: Prelim.			1943-52: Revised: Prelim.		
	Acres			Tons			Tons		
Georgia.....	15,410	20,000	19,500	1.10	1.12	.75	17,150	22,400	14,620
Other States ^{1/} 2/	230	6,500	9,400	2/ 1.13	1.70	.75	2/ 260	11,030	7,050
U. S. TOTAL	15,640	26,500	28,900	1.11	1.26	.75	17,400	33,430	21,670

^{1/}Includes Tennessee and acreage contracted by Georgia processors in Alabama, Florida, North Carolina, and South Carolina.
^{2/}1952.

UNITED STATES DEPARTMENT OF AGRICULTURE
 AGRICULTURAL MARKETING SERVICE
 CROP REPORTING BOARD
 WASHINGTON, D. C.

TC-54: 1107 November 10, 1954

SPINACH FOR PROCESSING
 ACREAGE AND PRODUCTION

Preliminary Estimate, 1954 with Comparisons

(Vegetables for Commercial Processing)

The indicated 1954 production of fall crop spinach for processing is 22,700 tons, according to the Crop Reporting Board. This exceeds the 1953 fall crop of 18,470 tons by 23 percent but is about 32 percent less than the 10-year average production of 33,170 tons.

The 1954 fall harvested acreage for processing is 5,810 acres. This compares with 4,130 acres harvested for fall processing in 1953 and an average of 10,920 acres for the 1943-52 period.

Total 1954 production of spinach for processing (all seasonal groups) is indicated to be 94,980 tons. This is about 11 percent less than the 1953 production of 107,200 tons and 17 percent less than the 10-year average production of 114,300 tons.

Total 1954 acreage of spinach harvested for processing (all seasonal groups) is estimated at 25,540 acres. In 1953, the total harvested acreage was 27,140 acres and the 10-year average harvested acreage is 38,770.

STATE	HARVESTED ACREAGE			YIELD PER ACRE			PRODUCTION		
AND	10-year:			10-year:			10-year:		
SEASONAL	average:	1953	1954	average:	1953	1954	average:	1953	1954
GROUP	1943-52:	Rev.	Prelim.	1943-52:	Rev.	Prelim.	1943-52:	Rev.	Prelim.
	Acres			Tons			Tons		
Texas									
Winter.....	6,870:	4,500:	4,500:	1.5 :	1.5 :	1.3 :	10,440:	6,800:	5,800
California	9,180:	8,200:	7,300:	5.0 :	6.3 :	6.8 :	46,220:	54,300:	49,400
Early Spring...	7,940:	7,000:	6,200:	5.0 :	6.9 :	6.9 :	39,790:	48,300:	42,800
Fall.....	1,240:	1,200:	1,100:	4.7 :	5.0 :	6.0 :	6,430:	6,000:	6,600
Virginia	950:	1,100:	1,200:	2.5 :	3.0 :	2.5 :	2,360:	3,300:	3,000
Late Spring....	560:	800:	800:	2.3 :	3.0 :	2.2 :	1,280:	2,400:	1,800
Fall.....	390:	300:	400:	2.6 :	3.0 :	3.0 :	1,080:	900:	1,200
Maryland	1,070:	1,450:	1,000:	2.0 :	2.5 :	2.4 :	2,120:	3,620:	2,400
Late Spring....	610:	1,000:	700:	2.2 :	2.5 :	2.5 :	1,330:	2,500:	1,800
Fall.....	460:	450:	300:	1.6 :	2.5 :	2.0 :	790:	1,120:	600
New York									
Late Spring....	1/1,180:	1,400:	1,100:	1/8.4 :	8.7 :	6.2 :	1/9,750:	12,200:	6,800
Arkansas	7,230:	3,900:	3,200:	1.7 :	1.7 :	2.0 :	12,460:	6,640:	6,400
Late Spring....	4,930:	3,600:	2,700:	1.6 :	1.7 :	2.0 :	8,180:	6,100:	5,400
Fall.....	2,300:	300:	500:	1.6 :	1.8 :	2.0 :	4,280:	540:	1,000
Oklahoma	9,130:	4,600:	4,600:	1.6 :	2.0 :	1.8 :	14,340:	9,110:	8,500
Late Spring....	5,540:	4,500:	3,600:	1.6 :	2.0 :	2.0 :	9,080:	9,000:	7,200
Fall.....	3,590:	100:	1,000:	1.2 :	1.1 :	1.3 :	5,260:	110:	1,300
Washington	1/710:	540:	490:	1/6.4 :	7.6 :	6.9 :	1/4,460:	4,130:	3,380
Late Spring....	1/220:	210:	130:	1/5.9 :	6.8 :	5.2 :	1/1,280:	1,430:	680
Fall.....	1/490:	330:	360:	1/6.7 :	8.1 :	7.6 :	1/3,180:	2,700:	2,700
Other States									
Fall.....	1/2,450:	1,450:	2,150:	1/5.0 :	4.9 :	4.3 :	1/12,150:	7,100:	9,300
STATES TOTAL	2/38,770:	27,140:	25,540:	3/2.94 :	3.95 :	3.72 :	2/114,300:	107,200:	94,980
Winter and									
Spring.....	2/27,850:	23,010:	19,730:	3/2.91 :	3.86 :	3.66 :	2/81,130:	88,730:	72,280
Fall.....	2/10,920:	4,130:	5,810:	3/3.04 :	4.47 :	3.91 :	2/33,170:	18,470:	22,700
1/4-year (1949-52) average.									

2/ Includes short time averages.

3/ Derived (total production by total acres).