



# National Weekly Cow and Boneless Beef Summary

Agricultural Marketing Service  
Livestock, Poultry, and Grain Market News

October 15, 2021

| Boneless Processing Beef and Beef Trimmings |              |                |              |                | 100% Lean Items           |       |         |        |
|---|--------------|----------------|--------------|----------------|---------------------------|-------|---------|--------|
|   | National     |                | Central      |                | <a href="#">LM XB 461</a> | Loads | Wtd Avg | Change |
| <a href="#">LM XB 460</a>                   | <b>Loads</b> | <b>Wtd Avg</b> | <b>Loads</b> | <b>Wtd Avg</b> | Cutter Cow Carcass Cutout |       | 231.04  | (0.35) |
| Fresh 92-94%                                | 4.8          | 286.25         | 2.7          | 287.37         | Inside Rounds - Boxed     | 3.6   | 470.81  | (7.21) |
| Fresh 90%                                   | 40.8         | 276.00         | 24.6         | 274.82         | Outside Rounds            | 0.0   | 0.00    | 0.00   |
| Fresh 85%                                   | 46.9         | 252.89         | 23.9         | 252.65         | Eye of Rounds             | 0.4   | 437.77  | 10.25  |
| Fresh 81%                                   | 0.0          | 0.00           | 0.0          | 0.00           | Flats and Eyes - Combos   | 3.7   | 430.91  | 1.19   |
| Fresh 65%                                   | 7.1          | 192.92         | 0.0          | 0.00           | Striploins                | 6.7   | 464.32  | (3.08) |
| Fresh 50%                                   | 62.4         | 99.31          |              |                | S.P.B. - Combo            | 2.5   | 433.04  | 0.52   |

| Ground Beef                  |  |              |                |
|------------------------------|--|--------------|----------------|
| <a href="#">LM XB 459</a>    |  | <b>Loads</b> | <b>Wtd Avg</b> |
| Fresh 73%                    |  | 12.8         | 195.83         |
| Fresh 81%                    |  | 27.0         | 227.50         |
| Fresh 93%                    |  | 3.2          | 363.22         |
| Ground Chuck                 |  | 8.3          | 252.70         |
| Ground Round                 |  | 2.0          | 326.99         |
| Ground Sirloin               |  | 0.4          | 367.05         |
| Steer/Heifer/Cow Ground Beef |  |              |                |
| Fresh 81%                    |  | 44.0         | 230.43         |
| Fresh 93%                    |  | 0.0          | 0.00           |
| Ground Chuck                 |  | 4.6          | 226.69         |

| Cow By-Product Drop Estimate |       |  |
|------------------------------|-------|--|
| <a href="#">NW LS 444</a>    |       |  |
| CWT Live                     | 15.25 |  |
| CWT Dressed                  | 32.45 |  |

| Canadian Live Cow Prices  |                      |
|---------------------------|----------------------|
| <a href="#">WA LS 718</a> | Prices in US Dollars |
| Ontario                   | 59.39                |
| Alberta                   | 63.24                |

| Weekly Canadian Imports   |              |         |
|---------------------------|--------------|---------|
| <a href="#">WA LS 637</a> | Week ending: | 10/2/21 |
| Slaughter St/Hf/Cow       |              | 10,458  |
| Slaughter Bulls           |              | 857     |
| YTD St/Hf/Cow             |              | 320,495 |
| YTD Bulls                 |              | 28,964  |

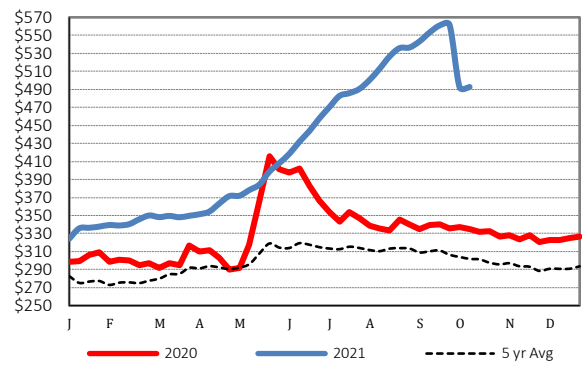
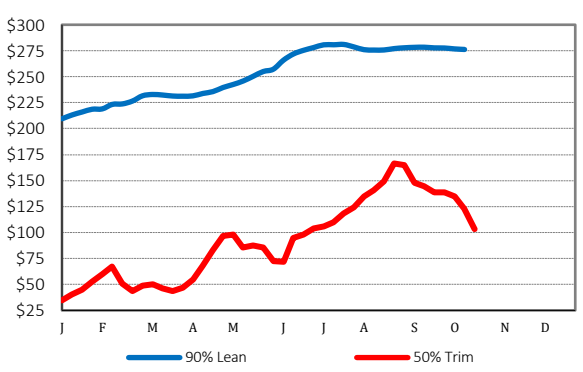
| Estimated Cattle Slaughter          |         |
|-------------------------------------|---------|
| <a href="#">SJ LS 710</a>           |         |
| Week to Date (est)                  | 646,000 |
| Same Period Last Week (est)         | 657,000 |
| Same Period Last Year (act)         | 659,000 |
| Cow and Bull Total Through Thursday | 105,000 |
| Previous Week Total Cow & Bull Est  | 141,000 |

| Weekly Cow Prices - Dressed Basis |         |        |        |        |
|-----------------------------------|---------|--------|--------|--------|
| <a href="#">LM CT168</a>          | Breaker | Boning | Lean   | Bull   |
| National                          | 128.62  | 128.92 | 128.95 | 156.99 |
| Northwest                         | 138.75  | 133.05 | 134.65 | 161.61 |
| Southwest                         | 133.03  | 130.91 | 131.78 | 156.18 |
| Eastern                           | 123.59  | 121.85 | 119.95 | 155.43 |

| Beef Production           |           |           |           |
|---------------------------|-----------|-----------|-----------|
| <a href="#">SJ LS 711</a> | 10/2/2021 | 9/25/2021 | 10/3/2020 |
| Cow and Bull Slaughter    | 140,982   | 140,515   | 139,233   |
| Year to Date Totals       | 5,478,594 | 5,337,612 | 5,177,157 |

## 2020 90% Lean vs 50% Lean

## 100% Lean Inside Rounds

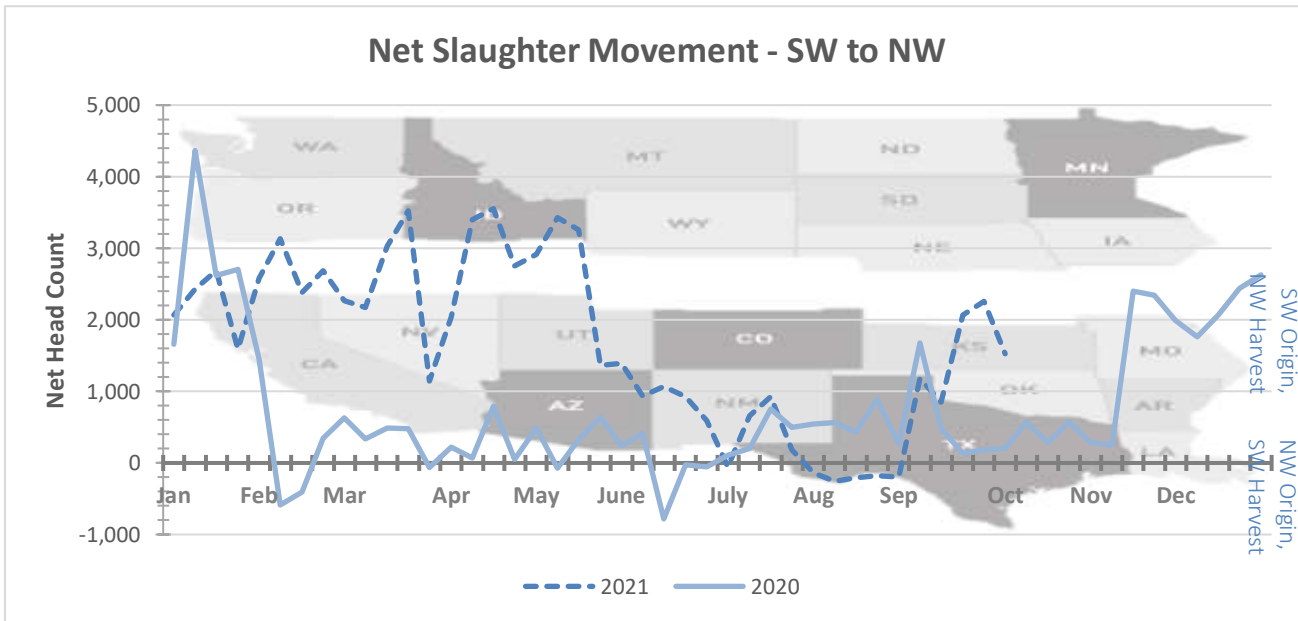


## Net Slaughter Movement of Cows and Bulls

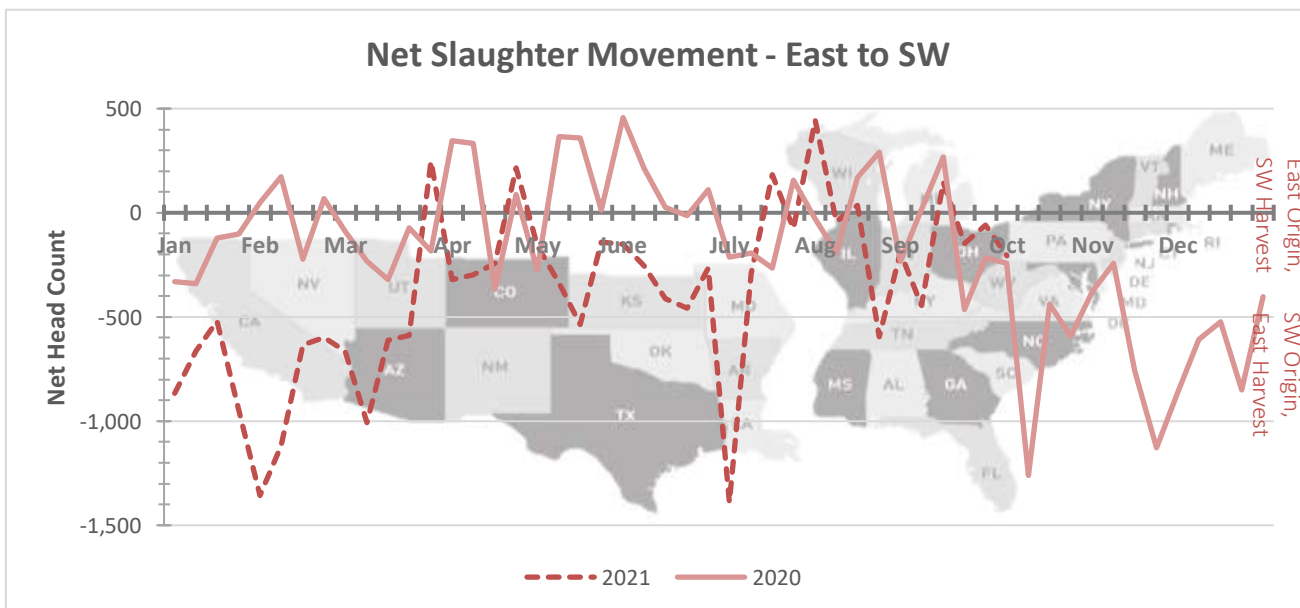
Data shown in the graphs below is derived from Livestock Mandatory Price Reporting -

[LM CT168](#) National Weekly Direct Cow and Bull Report

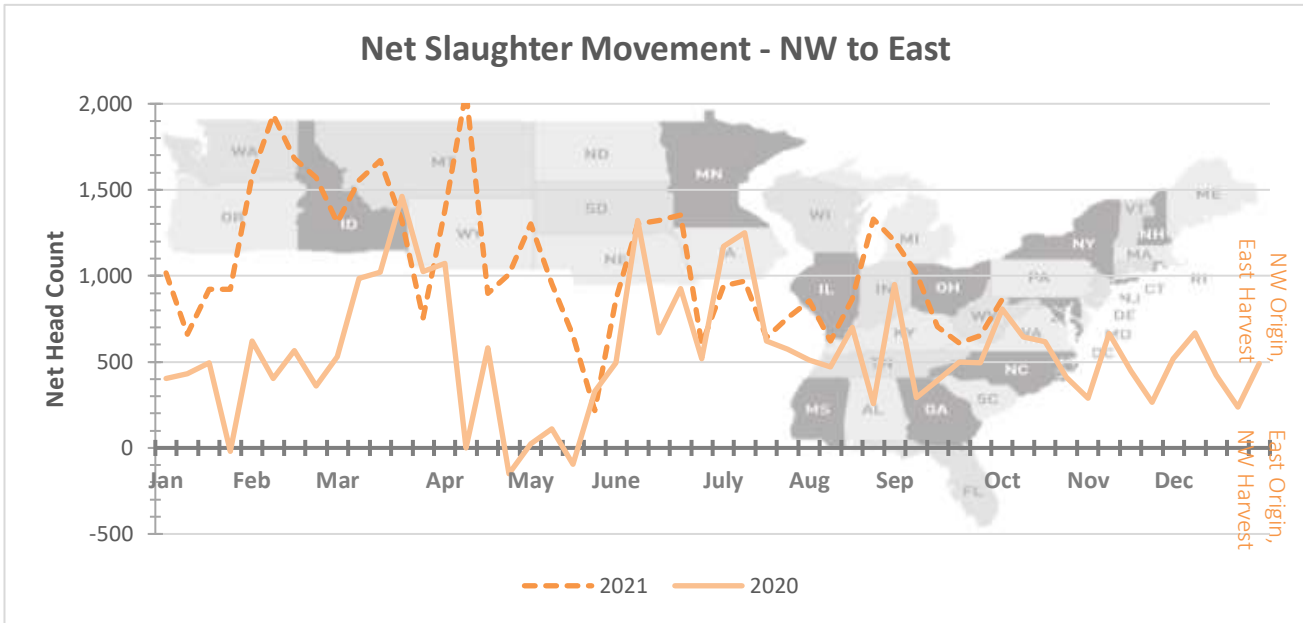
Graph Overview: <https://www.ams.usda.gov/sites/default/files/media/CowandBullMovementGraphOverview.pdf>



This graph illustrates the net slaughter movement from area to area. For example, when the line is in positive territory, there are more cows and bulls originating in the SW area and being transferred to the NW area for harvest. When the line is in negative territory, there are more cows and bulls originating in the NW area and being transferred to the SW area for harvest.



This graph illustrates the net slaughter movement from area to area. For example, when the line is in positive territory, there are more cows and bulls originating in the East area and being transferred to the SW area for harvest. When the line is in negative territory, there are more cows and bulls originating in the SW area and being transferred to the East area for harvest.



This graph illustrates the net slaughter movement from area to area. For example, when the line is in positive territory, there are more cows and bulls originating in the NW area and being transferred to the East area for harvest. When the line is in negative territory, there are more cows and bulls originating in the East area and being transferred to the NW area for harvest.