



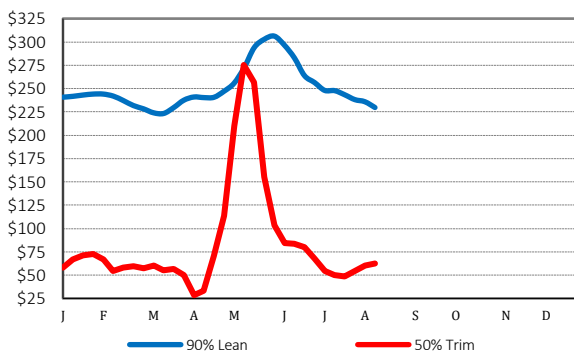
National Weekly Cow and Boneless Beef Summary

Agricultural Marketing Service
Livestock, Poultry, and Grain Market News

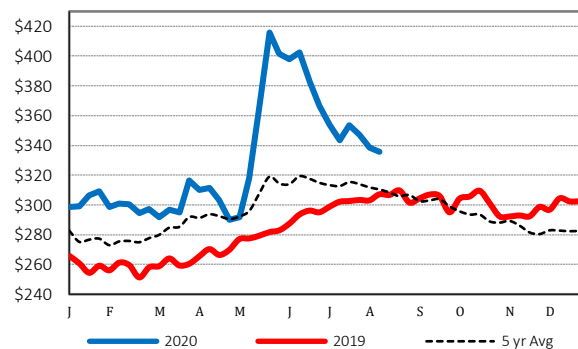
August 14, 2020

Boneless Processing Beef and Beef Trimmings					100% Lean Items				
National		Central			LM XB 461	Loads	Wtd Avg	Change	
LM XB 460	Loads	Wtd Avg	Loads	Wtd Avg	Cutter Cow Carcass Cutout		182.65	(1.33)	
Fresh 92-94%	6.9	242.56	4.0	246.71	Inside Rounds - Boxed	1.7	343.22	(0.26)	
Fresh 90%	37.2	226.73	25.3	224.51	Outside Rounds	0.0	0.00	0.00	
Fresh 85%	66.8	189.99	42.6	190.29	Eye of Rounds	0.5	325.38	0.66	
Fresh 81%	13.6	159.23	13.6	159.23	Flats and Eyes - Combos	1.7	322.58	1.54	
Fresh 65%	39.3	106.42	21.5	106.29	Striploins	6.5	330.94	(2.20)	
Fresh 50%	73.0	58.40			S.P.B. - Combo	1.8	328.49	(1.11)	
Ground Beef					Cow By-Product Drop Estimate				
LM XB 459			Loads	Wtd Avg	NW LS 444				
Fresh 73%			19.6	140.55	CWT Live		7.27		
Fresh 81%			31.2	160.95	CWT Dressed		15.47		
Fresh 93%			2.7	300.07	Canadian Live Cow Prices				
Ground Chuck			7.0	161.45	WA LS 718			Prices in US Dollars	
Ground Round			1.5	247.50	Ontario			65.48	
Ground Sirloin			0.4	305.97	Alberta			65.86	
Steer/Heifer/Cow Ground Beef					Weekly Canadian Imports				
Fresh 81%			23.2	163.13	WA LS 637	Week ending:		8/1/20	
Fresh 93%			0.6	282.58	Slaughter St/Hf/Cow			6,524	
Ground Chuck			0.4	174.08	Slaughter Bulls			923	
					YTD St/Hf/Cow			297,284	
					YTD Bulls			23,058	
Estimated Cattle Slaughter					Weekly Cow Prices - Dressed Basis				
SJ LS 710					LM CT168	Breaker	Boning	Lean	Bull
Week to Date (est)				640,000	National	130.73	132.74	136.29	163.13
Same Period Last Week (est)				633,000	Northwest	132.93	135.65	139.29	163.77
Same Period Last Year (act)				653,000	Southwest	125.97	135.59	139.59	162.99
Cow and Bull Total Through Thursday				97,000	Eastern	134.38	126.52	130.27	162.75
Previous Week Total Cow & Bull Est				123,000					
Beef Production									
SJ LS 711		8/1/2020	7/25/2020	8/3/2019					
Cow and Bull Slaughter		121,154	122,413	127,987					
Year to Date Totals		4,026,997	3,905,843	4,055,793					

2020 90% Lean vs 50% Lean



100% Lean Inside Rounds

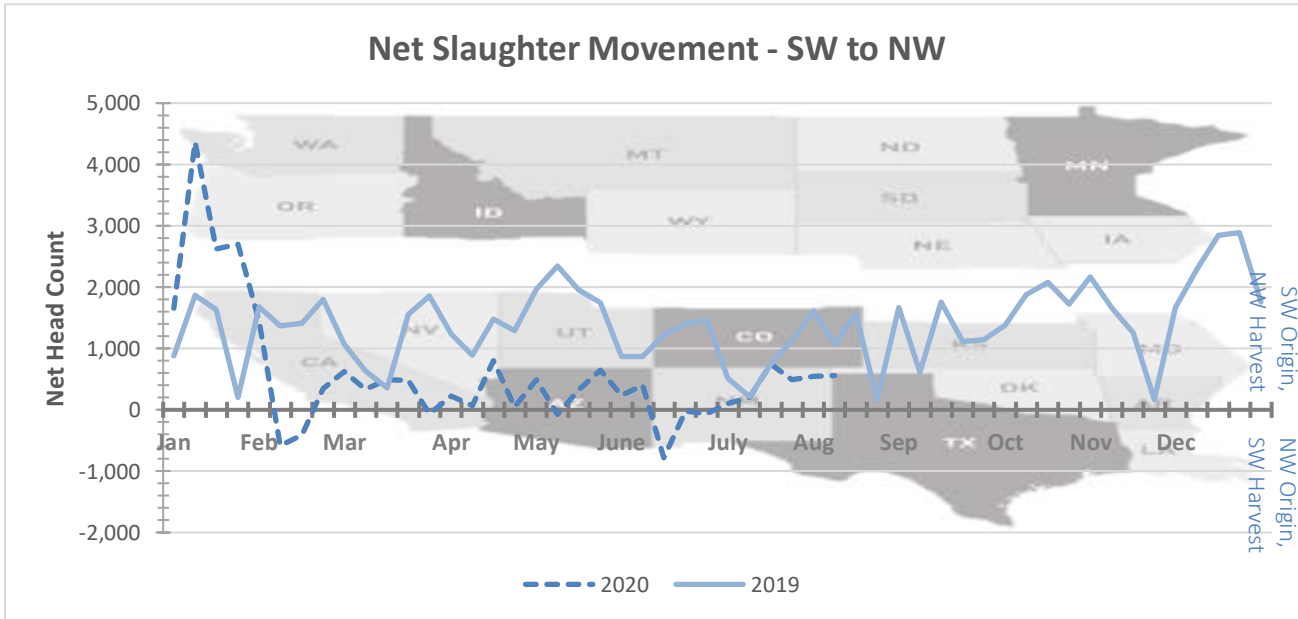


Net Slaughter Movement of Cows and Bulls

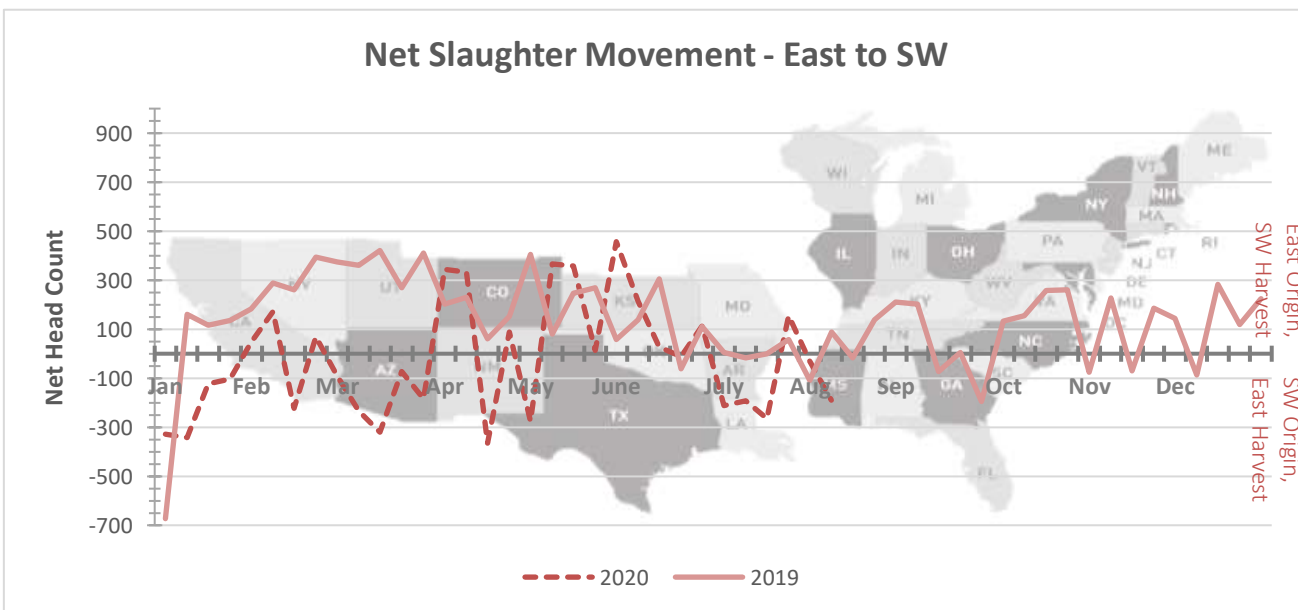
Data shown in the graphs below is derived from Livestock Mandatory Price Reporting -

[LM CT168](#) National Weekly Direct Cow and Bull Report

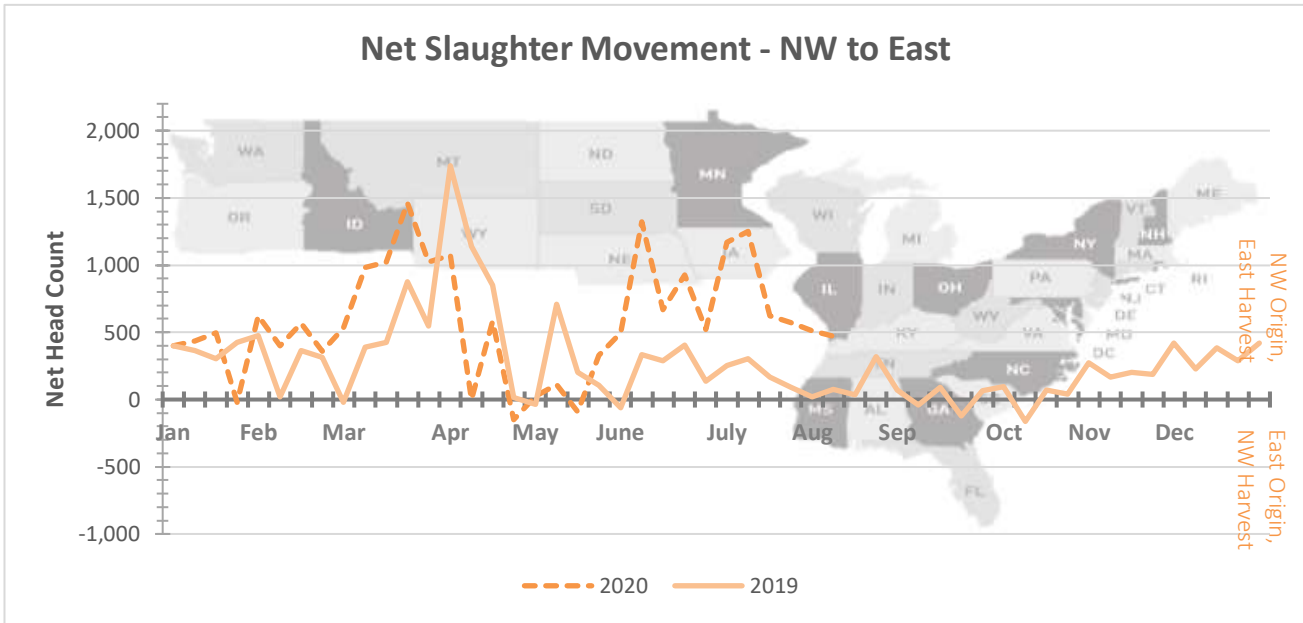
Graph Overview: <https://www.ams.usda.gov/sites/default/files/media/CowandBullMovementGraphOverview.pdf>



This graph illustrates the net slaughter movement from area to area. For example, when the line is in positive territory, there are more cows and bulls originating in the SW area and being transferred to the NW area for harvest. When the line is in negative territory, there are more cows and bulls originating in the NW area and being transferred to the SW area for harvest.



This graph illustrates the net slaughter movement from area to area. For example, when the line is in positive territory, there are more cows and bulls originating in the East area and being transferred to the SW area for harvest. When the line is in negative territory, there are more cows and bulls originating in the SW area and being transferred to the East area for harvest.



This graph illustrates the net slaughter movement from area to area. For example, when the line is in positive territory, there are more cows and bulls originating in the NW area and being transferred to the East area for harvest. When the line is in negative territory, there are more cows and bulls originating in the East area and being transferred to the NW area for harvest.