



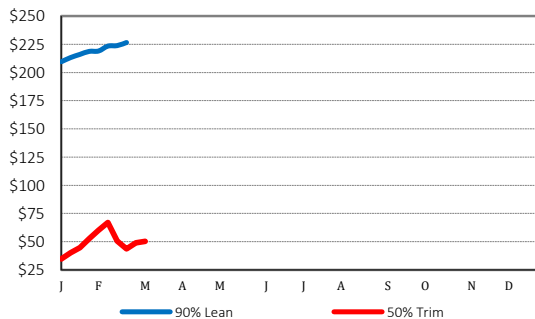
National Weekly Cow and Boneless Beef Summary

Agricultural Marketing Service
Livestock, Poultry, and Grain Market News

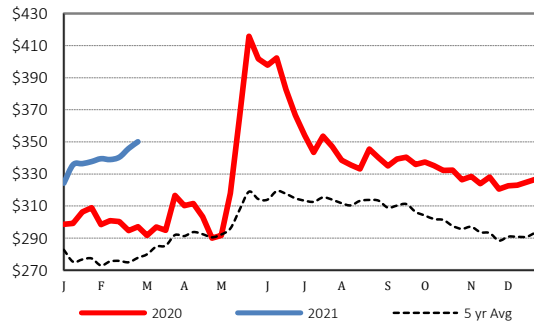
March 5, 2021

Boneless Processing Beef and Beef Trimmings					100% Lean Items				
National		Central			LM XB 461	Loads	Wtd Avg	Change	
LM XB 460	Loads	Wtd Avg	Loads	Wtd Avg	Cutter Cow Carcass Cutout		187.91	(0.54)	
Fresh 92-94%	11.4	243.04	7.7	244.83	Inside Rounds - Boxed	1.8	353.88	(13.21)	
Fresh 90%	32.4	232.87	15.6	232.53	Outside Rounds	0.8	328.72	(0.05)	
Fresh 85%	84.5	204.36	54.4	204.98	Eye of Rounds	0.6	334.61	1.18	
Fresh 81%	0.0	0.00	0.0	0.00	Flats and Eyes - Combos	5.1	330.34	4.18	
Fresh 65%	34.1	80.79	19.9	78.00	Striploins	4.8	353.75	5.82	
Fresh 50%	62.4	46.48			S.P.B. - Combo	1.7	336.19	(4.99)	
Ground Beef					Cow By-Product Drop Estimate				
LM XB 459			Loads	Wtd Avg	NW LS 444				
Fresh 73%			8.4	166.65	CWT Live		11.45		
Fresh 81%			7.9	193.84	CWT Dressed		24.36		
Fresh 93%			3.6	317.04	Canadian Live Cow Prices				
Ground Chuck			6.0	205.15	WA LS 718			Prices in US Dollars	
Ground Round			2.2	260.49	Ontario			62.82	
Ground Sirloin			0.3	324.40	Alberta			69.47	
Steer/Heifer/Cow Ground Beef					Weekly Canadian Imports				
Fresh 81%			12.5	192.28	WA LS 637	Week ending:		2/20/21	
Fresh 93%			0.0	0.00	Slaughter St/Hf/Cow			10,472	
Ground Chuck			0.5	207.89	Slaughter Bulls			373	
					YTD St/Hf/Cow			70,718	
					YTD Bulls			3,407	
Estimated Cattle Slaughter					Weekly Cow Prices - Dressed Basis				
SJ LS 710					LM CT168	Breaker	Boning	Lean	Bull
Week to Date (est)				665,000	National	124.47	126.74	129.93	160.78
Same Period Last Week (est)				666,000	Northwest	127.14	127.71	128.01	161.79
Same Period Last Year (act)				649,000	Southwest	123.88	126.19	133.01	162.41
Cow and Bull Total Through Thursday				107,000	Eastern	123.68	126.46	127.86	156.18
Previous Week Total Cow & Bull Est				143,000					
Beef Production									
SJ LS 711	2/20/2021	2/13/2021	2/22/2020						
Cow and Bull Slaughter	110,608	140,432	137,318						
Year to Date Totals	1,087,087	979,205	1,102,796						

2020 90% Lean vs 50% Lean



100% Lean Inside Rounds

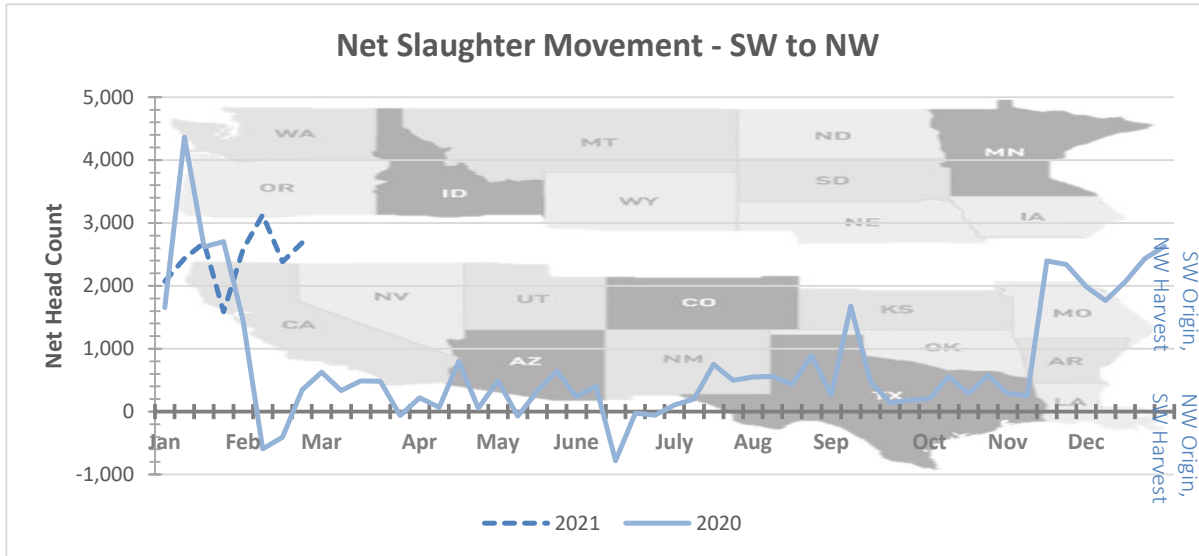


Net Slaughter Movement of Cows and Bulls

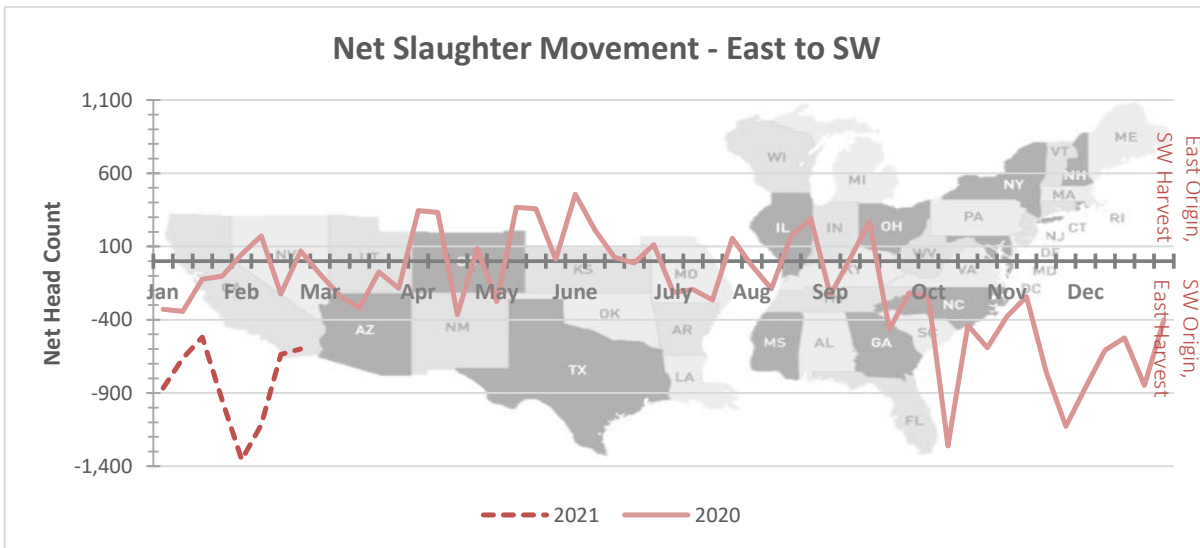
Data shown in the graphs below is derived from Livestock Mandatory Price Reporting -

[LM CT168](#) National Weekly Direct Cow and Bull Report

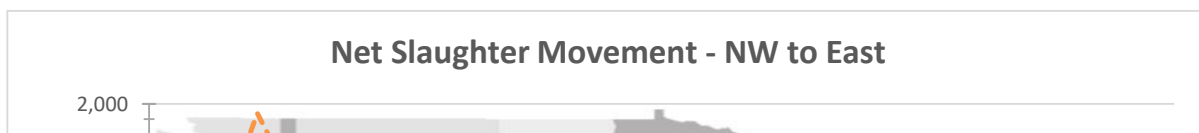
Graph Overview: <https://www.ams.usda.gov/sites/default/files/media/CowandBullMovementGraphOverview.pdf>

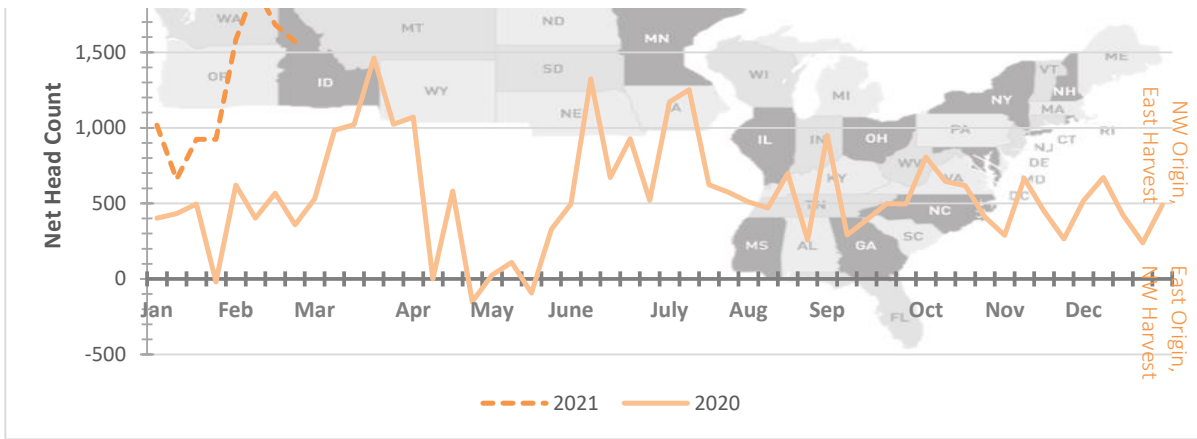


This graph illustrates the net slaughter movement from area to area. For example, when the line is in positive territory, there are more cows and bulls originating in the SW area and being transferred to the NW area for harvest. When the line is in negative territory, there are more cows and bulls originating in the NW area and being transferred to the SW area for harvest.



This graph illustrates the net slaughter movement from area to area. For example, when the line is in positive territory, there are more cows and bulls originating in the East area and being transferred to the SW area for harvest. When the line is in negative territory, there are more cows and bulls originating in the SW area and being transferred to the East area for harvest.





This graph illustrates the net slaughter movement from area to area. For example, when the line is in positive territory, there are more cows and bulls originating in the NW area and being transferred to the East area for harvest. When the line is in negative territory, there are more cows and bulls originating in the East area and being transferred to the NW area for harvest.

Source: USDA Livestock, Poultry, and Grain Market News
 Des Moines, Iowa | 515-284-4460 | dsm.lpgmn@ams.usda.gov
www.ams.usda.gov/LPSMarketNewsPage