



National Weekly Fed Cattle Comprehensive

Agricultural Marketing Service
Livestock, Poultry, and Grain Market News

November 24, 2020

Weighted Average Prices

(Weekly Information from 2pm Previous Monday to 10am Current Monday; Includes Negotiated, Formula Nets, Contract Nets, & Grid Nets)"

All Steers & Heifers (Beef Type Cattle)

Purchasing Basis	% Choice	Head	Avg Price	Week Ago Change	Year Ago Change
Dressed	> 65% Choice	227,993	\$175.00	\$2.88 ↑	(\$10.88) ↓
	< 65% Choice	20,640	\$170.78	\$3.11 ↑	(\$9.23) ↓
	Total all Grades	248,633	\$174.65	\$2.92 ↑	(\$10.57) ↓
Live	> 65% Choice	139,203	\$110.72	\$1.03 ↑	(\$6.16) ↓
	< 65% Choice	17,078	\$110.21	\$1.79 ↑	(\$5.44) ↓
	Total all Grades	156,281	\$110.66	\$1.09 ↑	(\$6.05) ↓

Dairy Bred

Purchasing Basis	% Choice	Head	Avg Price	Week Ago Change	Year Ago Change
Dressed	> 65% Choice	22,471	\$167.08	\$2.33 ↑	(\$4.84) ↓
	< 65% Choice	986	\$155.81	\$5.28 ↑	(\$4.64) ↓
	Total all Grades	23,457	\$166.60	\$2.60 ↑	(\$4.27) ↓
Live	> 65% Choice	2,900	\$96.78	\$2.41 ↑	(\$5.61) ↓
	< 65% Choice	861	\$94.38	\$1.08 ↑	(\$9.58) ↓
	Total all Grades	3,761	\$96.23	\$1.89 ↑	(\$6.74) ↓

Spread Comparison Values

Beef Type minus Dairy Type

(Weekly Information from 2pm Previous Monday to 10am Current Monday; Includes Negotiated, Formula Nets, Contract Nets, & Grid Nets)

Purchasing Basis	Current	Week Ago Change	Year Ago Change
Dressed	\$8.05 ↑	\$7.73 ↑	\$14.35 ↑
Live	\$14.43 ↑	\$15.23 ↑	\$13.74 ↑

Formula Net minus Negotiated

(Beef Type Cattle; All live transactions converted to a dressed price)

52 Week Rolling Average

\$4.62 ↑



National Weekly Fed Cattle Comprehensive

Agricultural Marketing Service
Livestock, Poultry, and Grain Market News

November 24, 2020

Formula Base minus Negotiated

(Beef Type Cattle; All live transactions converted to a dressed price)

52 Week Rolling Average

\$1.72



Formula Net minus Formula Base

(Beef Type Cattle; All live transactions converted to a dressed price)

52 Week Rolling Average

\$2.90



Grading % and Carcass Weights

(Beef Type Cattle; Includes Formula Net, Contract Net, and Grid Net; Grading % includes Choice & higher; Carcass Weight includes all grades; All live transactions converted to a dressed basis)

Grading %

82.2

Week Ago

81.6



Dressed Weight

898.5

Week Ago

896.7



Daily Formula Base Voume

Tue Nov 17

62,454

Wed Nov 18

30,692

Thu Nov 19

41,708

Fri Nov 20

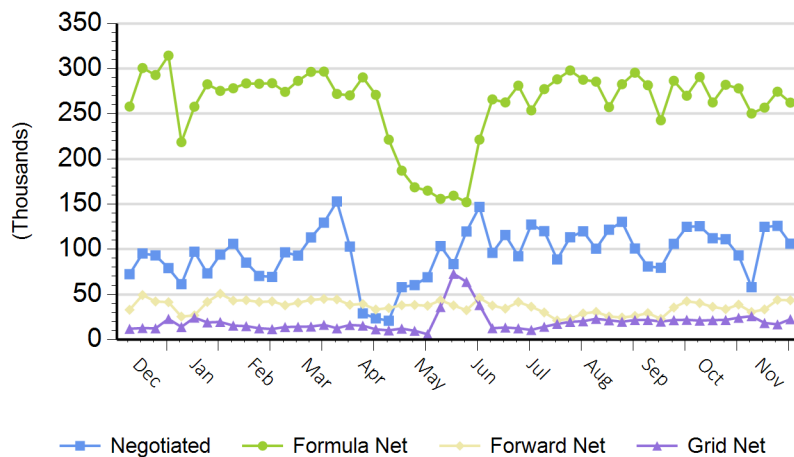
27,906

Mon Nov 23

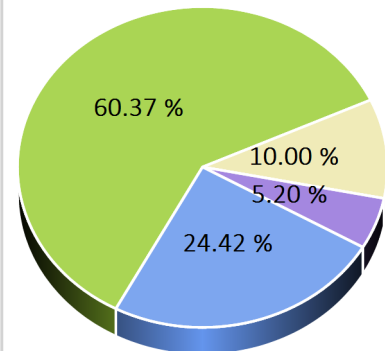
131,533

Purchasing Basis Volume

Weekly Purchasing Basis



Previous Week





National Weekly Fed Cattle Comprehensive

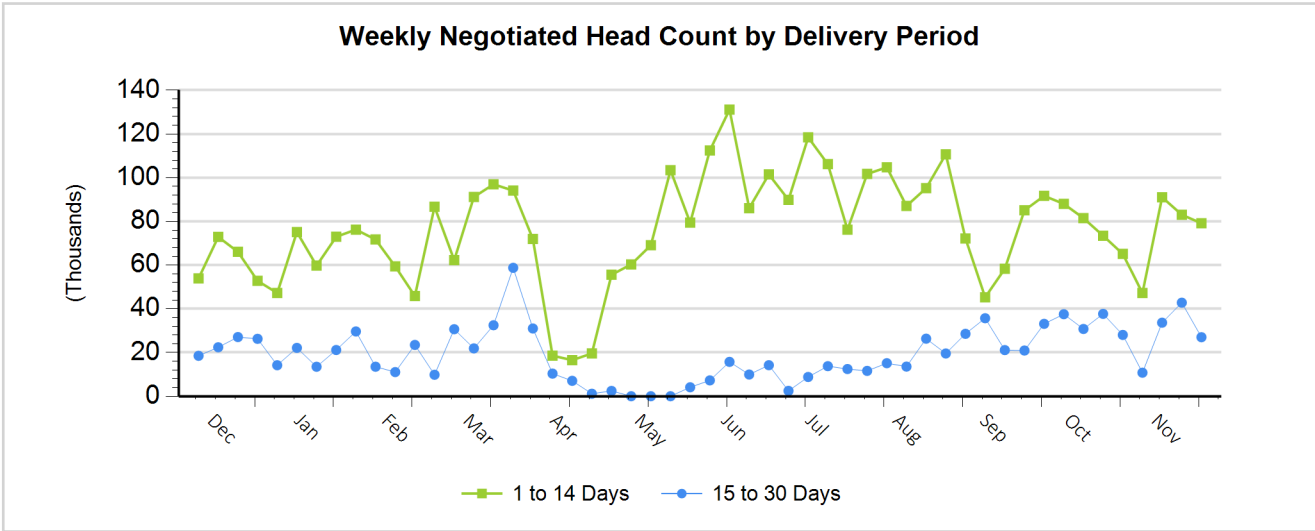
Agricultural Marketing Service
Livestock, Poultry, and Grain Market News

November 24, 2020

Weekly Negotiated Avg. Price by Delivery Period

(Beef Type Cattle: All live transactions converted to dressed price)

Avg Price (1 to 14 Days)	Avg Price (15 to 30 Days)
\$173.54	\$171.63



For more Information about this report, please visit this link: [National Weekly Fed Cattle Comprehensive Overview](#)