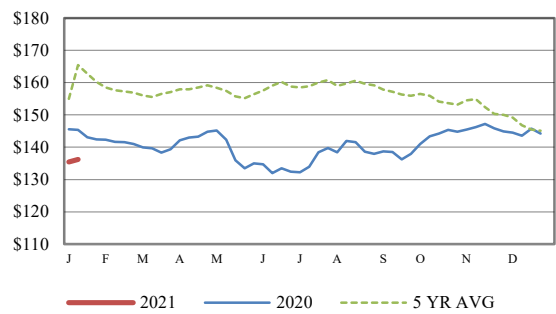


Receipts:	This Week	Last Week	Year Ago
SJ_LS850	*\$477,400**	0	531,700

No recent price comparison nationwide for week ending January 9 due to two full weeks of auctions being on limited scheduling or completely closed in observance of the Christmas and New Years holiday. Demand was reported as good throughout the nation the first full marketing week of 2021. The first full week of the year is typically the largest volume week of the year and this has been no exception with a heavy supply of cattle covering the entire weight spectrum. Many producers hold their calf crop until the first week of the year to sell and this year was no different. There will undoubtedly be another Overall, weather conditions were favorable for transporting cattle and auctions ran longer than normal at most locations. There are some areas where ranchers are dealing with some mud, as temperatures were not cold enough to keep the ground frozen. Wheat grazing areas have recently received significant amounts of moisture and are looking forward to a few sunny days to get more calves turned out when the wheat growth can outpace forage consumption by the bovine. Light weight grazing type calves with many more days left before heading to a feedyard found the best demand as there is a lot more time for them to offer opportunities for profit. The CME Cattle Complex started the year out with a bang and not to the positive side. On Monday, Feeder Cattle contracts bumped up against closing limit lower, but held to close 3.725 to 4.20 lower on the front three months. Live Cattle contracts were pulled along and closed 2.125 to 3.00 lower for the front three months. This week in the fed cattle arena, the Northern Plains dressed sales were 3.00 lower at 165.00, while trades in the Southern Plains sold steady with live sales at 108.00. Corn prices have soared recently and are at a six year high near the 5.00 mark with the US dollar index at its lowest level since 2018. Choice Boxed-beef values continue to see some erosion, trading near their lows as January is not noted as a consumer beef month with loins and ribs down considerably since the holidays. On the week, Choice cutout closed 3.15 lower at 206.80, while Select was 1.04 higher at 196.69; as the Choice-Select spread has narrowed to 10.11. Cattle Slaughter under federal inspection estimated at 651K for the week, 136K more than last week(holiday) and 8K more than a year ago. Auction volume this week included 59 percent weighing over 600 lbs and 39 percent heifers.

[More.....](#)

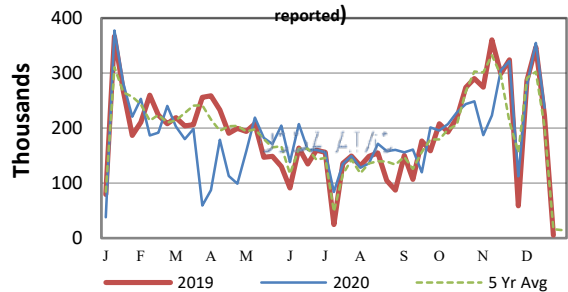
CME FEEDER CATTLE INDEX (\$/CWT)



— 2021 — 2020 - - - 5 YR AVG

NATIONWIDE REPORTED WEEKLY FEEDER CATTLE AUCTION RECEIPTS

(Receipts vary depending on the number of auctions reported)

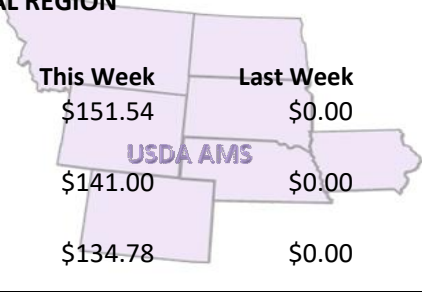


— 2019 — 2020 - - - 5 Yr Avg

REGIONAL WEIGHTED AVERAGE FEEDER STEER PRICES

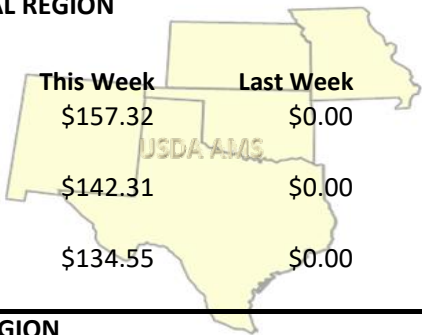
NORTH CENTRAL REGION

Steers:	This Week	Last Week	Last Year
600-700 lbs	\$151.54	\$0.00	\$158.74
700-800 lbs	\$141.00	\$0.00	\$150.86
800-900 lbs	\$134.78	\$0.00	\$144.60



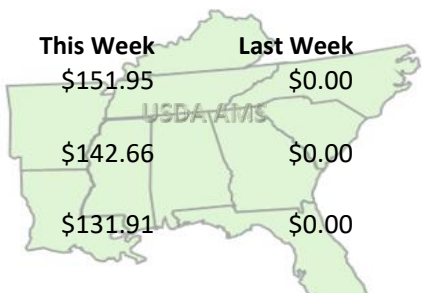
SOUTH CENTRAL REGION

Steers:	This Week	Last Week	Last Year
500-600 lbs	\$157.32	\$0.00	\$162.92
600-700 lbs	\$142.31	\$0.00	\$150.05
700-800 lbs	\$134.55	\$0.00	\$145.69

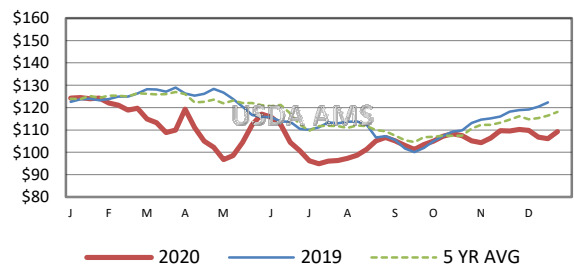


SOUTHEAST REGION

Steers:	This Week	Last Week	Last Year
400-500 lbs	\$151.95	\$0.00	\$157.26
500-600 lbs	\$142.66	\$0.00	\$145.46
600-700 lbs	\$131.91	\$0.00	\$136.24



5 AREA WEEKLY WEIGHTED AVERAGE SLTR STEER PRICE (\$/CWT)



— 2020 — 2019 - - - 5 YR AVG

USDA Livestock, Poultry, & Grain Market News

St. Joseph, Missouri
Phone: 816-676-7000



For detailed state-by-state feeder cattle quotes:

[National Feeder & Stocker Cattle Summary](#)

<http://www.ams.usda.gov/LSMarketNews>