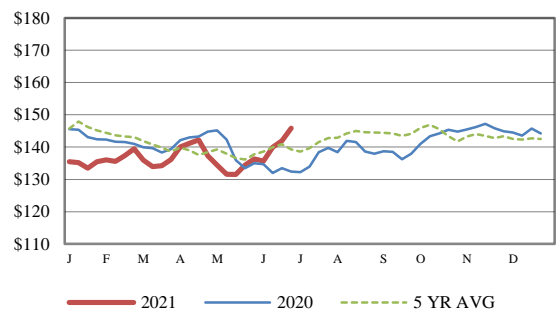


Receipts: This Week 214,500 Last Week 289,400 Year Ago 271,500
[SJ LS850](#)

Compared to last week, steers and heifers sold mostly steady to 5.00 higher, with some of the largest gains in the North Central regions. Rains across the Corn Belt were of mixed intensity this past week as weather will continue to be watched for follow up rains and temperatures going into July, and more rain in the forecast for this coming week. Feeder cattle contracts gained this past week with August gaining 4.52 for the week closing at 159.55, September gained 4.02 for the week closing at 161.25 on Friday. A lower corn market was welcomed for feeders; new crop corn has seen pressure due to the rains across the Corn Belt and falling corn prices were a main driver for higher feeder cattle prices. July corn for the week closed near 19 cents lower with new crop corn falling below the 5.50 level as September corn closed near 47 cents lower for the week at 5.30 1/4 and December corn closing Friday at 5.19 1/4. There were several stick out auctions this past week with Bassett, NE on Wednesday pretty much topping the list in all weight categories a few highlights included 366 head of 800-850 lb steers averaging 812 lbs selling for a weighted average price of 157.02, 343 head of 650-700 lb steers averaging 675 lbs sold for a weighted average price of 171.56, with 184 head of thin [fleshed](#) [More.....](#)

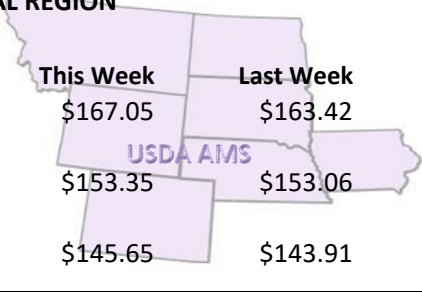
CME FEEDER CATTLE INDEX (\$/CWT)



REGIONAL WEIGHTED AVERAGE FEEDER STEER PRICES

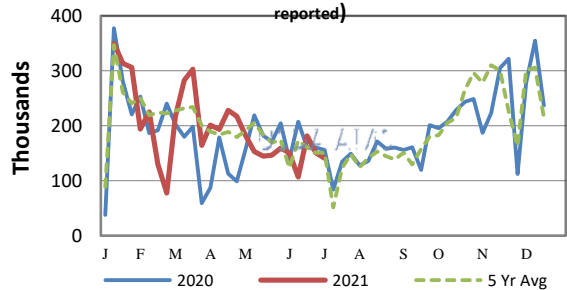
NORTH CENTRAL REGION

Steers:	This Week	Last Week	Last Year
600-700 lbs	\$167.05	\$163.42	\$156.05
700-800 lbs	\$153.35	\$153.06	\$143.24
800-900 lbs	\$145.65	\$143.91	\$132.23

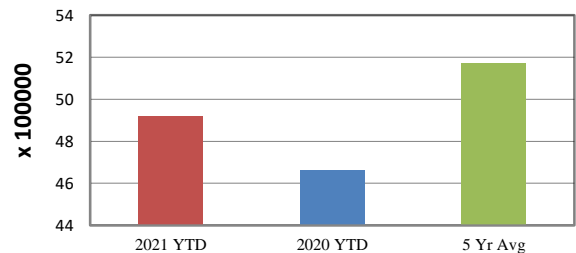


NATIONWIDE REPORTED WEEKLY FEEDER CATTLE AUCTION RECEIPTS

(Receipts vary depending on the number of auctions reported)

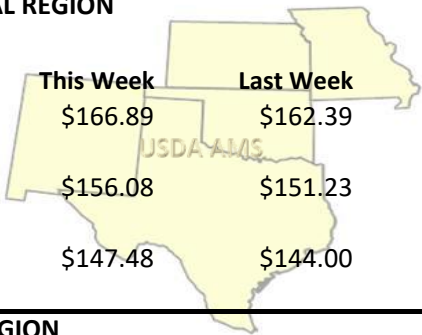


YEAR TO DATE

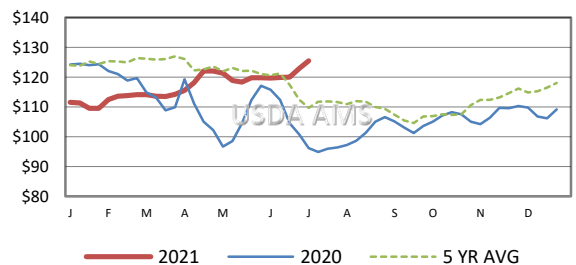


SOUTH CENTRAL REGION

Steers:	This Week	Last Week	Last Year
500-600 lbs	\$166.89	\$162.39	\$150.69
600-700 lbs	\$156.08	\$151.23	\$141.59
700-800 lbs	\$147.48	\$144.00	\$133.14

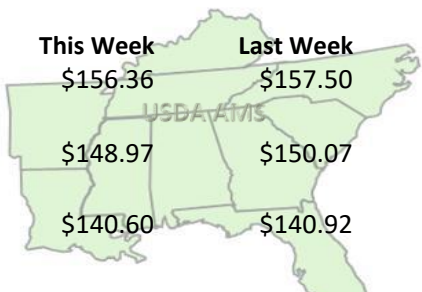


5 AREA WEEKLY WEIGHTED AVERAGE SLTR STEER PRICE (\$/CWT)



SOUTHEAST REGION

Steers:	This Week	Last Week	Last Year
400-500 lbs	\$156.36	\$157.50	\$146.73
500-600 lbs	\$148.97	\$150.07	\$139.89
600-700 lbs	\$140.60	\$140.92	\$131.34



USDA Livestock, Poultry, & Grain Market News

St. Joseph, Missouri
 Phone: 816-676-7000



For detailed state-by-state feeder cattle quotes:

[National Feeder & Stocker Cattle Summary](#)

<http://www.ams.usda.gov/LSMarketNews>