

Receipts:	This Week	Last Week	Year Ago
SJ LS850	390,200	373,100	383,500

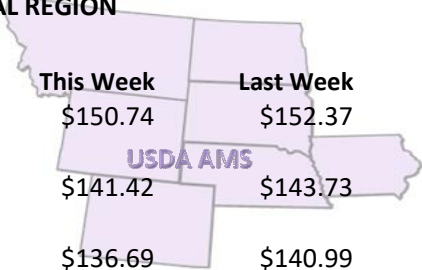
Compared to last week, steers and heifers sold uneven; ranging from mostly 5.00 lower to 5.00 higher. Many lightweight steer calves suitable for summer grazing weighing 300-450 lbs are still selling near or above the 2.00/lb level are selling with good demand. Yearlings are still in demand, but in many cases at lower prices but buyers are still seeking big yearlings that will squeeze into the April harvest slot. The large volume sales this week from Oklahoma through the Northern Plains had very large offerings of feeders as many are bringing calves to town before the end of the year as receipts at these large volume auctions swelled up with several selling from 6,000 head to Oklahoma City's near 17,000 head on Monday. In Bassett, NE on Wednesday sold over 500 head of 600-650 lb steers averaging 635 lbs at a weighted average price of 166.18 and 200 head of 500-550 lb steers averaging 520 lbs sold a weighted average price of 181.45. Sioux Falls on Monday sold near 400 hd of 950-985 lb steers averaging 972 lbs at a weighted average price of 137.97. In Ogallala, NE on Thursday sold 64 head of fancy steers weighing 507 lbs at 190.00. With one more week of sales and many late week sales this week will be done for the year has help inflate receipts this week. With many large volume auctions this week are adding up, and has caused some trucking shortages and outlets getting clogged. Very good weather over the country has feedlot and ground conditions dry and in good shape is helping to keep calves clean which helps the eye appeal for the feeders and has helped the movement of feeder cattle.

[More.....](#)

REGIONAL WEIGHTED AVERAGE FEEDER STEER PRICES

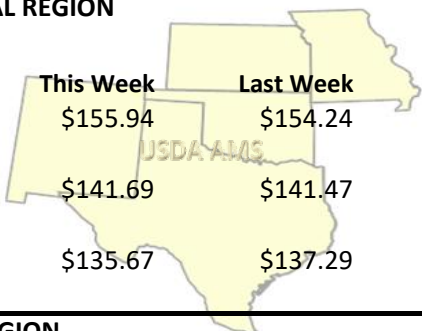
NORTH CENTRAL REGION

Steers:	This Week	Last Week	Last Year
600-700 lbs	\$150.74	\$152.37	\$151.57
700-800 lbs	\$141.42	\$143.73	\$145.33
800-900 lbs	\$136.69	\$140.99	\$144.65



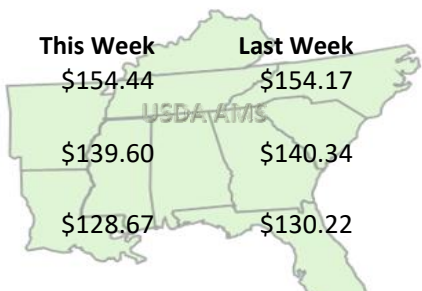
SOUTH CENTRAL REGION

Steers:	This Week	Last Week	Last Year
500-600 lbs	\$155.94	\$154.24	\$150.59
600-700 lbs	\$141.69	\$141.47	\$144.56
700-800 lbs	\$135.67	\$137.29	\$143.73



SOUTHEAST REGION

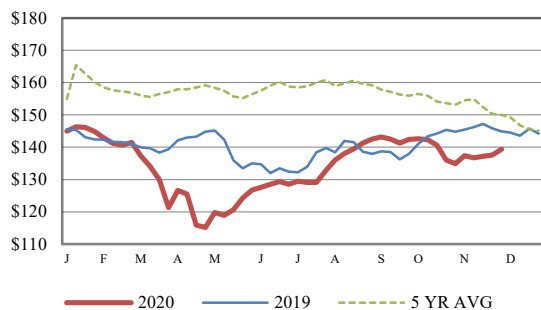
Steers:	This Week	Last Week	Last Year
400-500 lbs	\$154.44	\$154.17	\$146.57
500-600 lbs	\$139.60	\$140.34	\$133.77
600-700 lbs	\$128.67	\$130.22	\$132.48



For detailed state-by-state feeder cattle quotes:

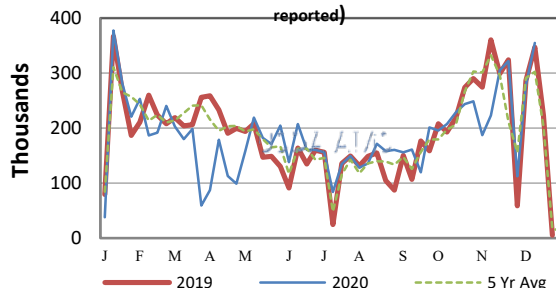
[National Feeder & Stocker Cattle Summary](#)

CME FEEDER CATTLE INDEX (\$/CWT)

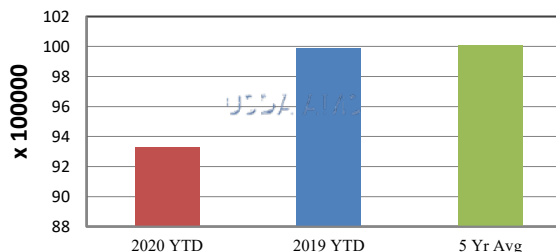


NATIONWIDE REPORTED WEEKLY FEEDER CATTLE AUCTION RECEIPTS

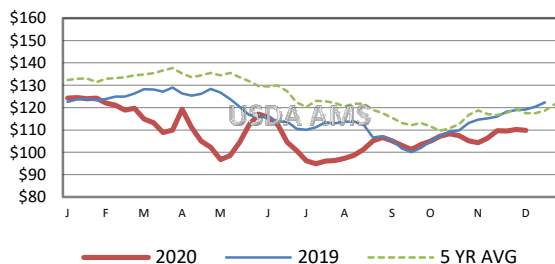
(Receipts vary depending on the number of auctions reported)



YEAR TO DATE



5 AREA WEEKLY WEIGHTED AVERAGE SLTR STEER PRICE (\$/CWT)



USDA Livestock, Poultry, & Grain Market News

St. Joseph, Missouri
Phone: 816-676-7000



<http://www.ams.usda.gov/LSMarketNews>