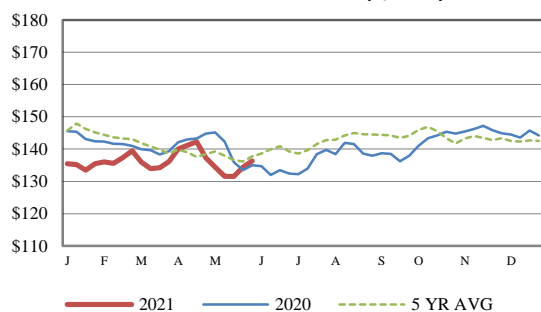


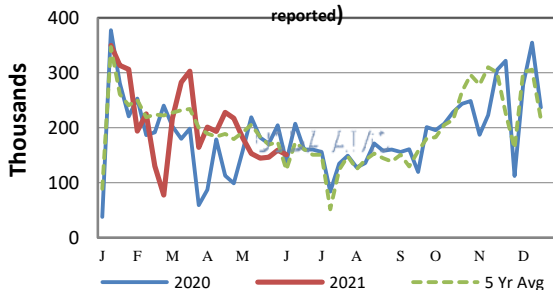
Receipts:	This Week	Last Week	Year Ago
<a href="#">SJ_LS850</a>	194,500	227,200	237,800

Compared to last week, steers and heifers sold steady to 4.00 higher in the North and South Central regions, while the Southeast region was reported 1.00 to 3.00 lower on the week. Demand was reported as good to very good at auctions this week due to early week sales not having auctions on May 31 and June 1 in observance of the Memorial Day holiday. In addition, many auctions in the North Plains are already on summer schedules with auctions only occurring every two weeks. There are some caveats to that as the much of Dakotas continue to be in severe to extreme drought conditions. Over 75 pct of North Dakota falls in the D3(Extreme) drought designation or worse, while over 10 pct of South Dakota is in that label. Iowa is being touched by drought as well as the Northwest corner of the state accounts for the near 8 pct of state in the D2 (Severe) designation. The CME Feeder Cattle contracts were higher early in the week and lower mid to late week. August FC contract was 2.350 lower for the week while September was 1.375 lower on the week to close at 151.350 and 153.525 respectively. Looking forward to next week, the CME Group will be resetting limits on Feeder Cattle contracts to 6.25/cwt from the current level of 5.00/cwt on June 1, 2021 following the variable price limits mechanisms pursuant to the CME Rulebook. The Live Cattle contracts reset limits to 5.00/cwt from the current limit of 4.00/cwt. Large swings in the Live Cattle contract can now amount to over 4 pct of the value of an animal at this weeks prices. Negotiated live trading in the Southern Plains sold at 119.00 to 120.00, while dressed sales in Nebraska sold at 191.00. Choice boxed beef values closed the week 5.80 higher at 330.97, while Select was 1.41 lower 300.90 for the same time period. The Choice-Select spread widened to 30.07 as the heart of the calf-feds are upon the industry as percent Choice are better is falling. This is only the second time in the last four years that the daily Choice-Select spread has topped 30.00 with the last time being May 4, 2020 when it was reported at 33.47. Producers continue to struggle with seeing boxed beef prices at very high levels, while they are facing feed costs that are high compared to their respective price they are receiving for their livestock. On Monday the 24th, the Cold Storage report confirmed total red meat supplies in freezers were down 3 percent from the previous month and down 17 percent from last year. Total pounds of beef in freezers were down 6 percent from the previous month and down 5 percent from last year. The competing protein showed frozen pork supplies were up 1 percent from the previous month but down 26 percent from last year. Last week, the Rural Mainstreet Index for May was reported at a record high at 78.8 from the previous month at a very healthy 69.0. Weekly Cattle Slaughter under federal inspection estimated at 629K for the week, 40K less than last week, and 102K more than a year ago as the Memorial Day holiday fell this week a year ago. [More.....](#)

**CME FEEDER CATTLE INDEX (\$/CWT)**



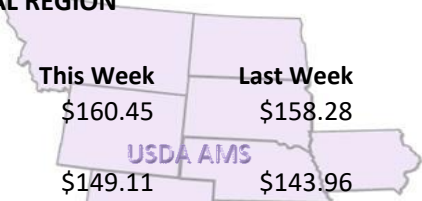
**NATIONWIDE REPORTED WEEKLY FEEDER CATTLE AUCTION RECEIPTS**  
(Receipts vary depending on the number of auctions reported)



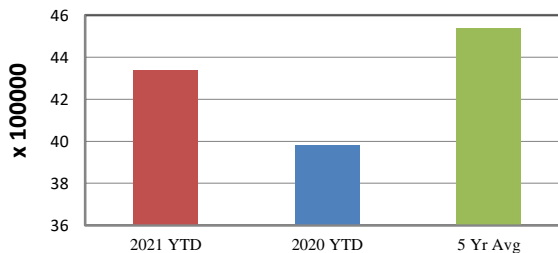
**REGIONAL WEIGHTED AVERAGE FEEDER STEER PRICES**

**NORTH CENTRAL REGION**

Steers:	This Week	Last Week	Last Year
600-700 lbs	\$160.45	\$158.28	\$151.94
700-800 lbs	\$149.11	\$143.96	\$142.06
800-900 lbs	\$137.83	\$137.84	\$132.26

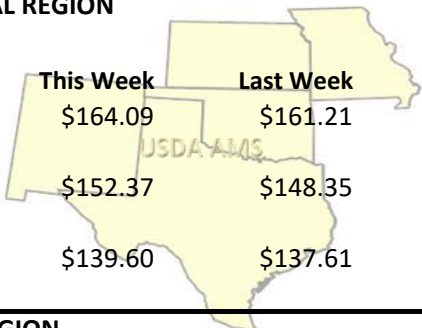


**YEAR TO DATE**

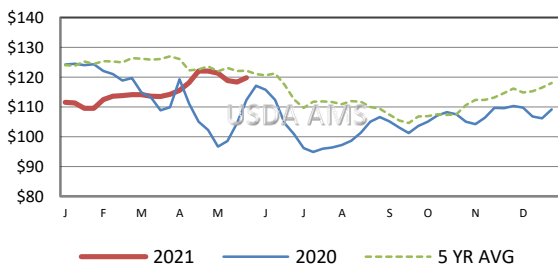


**SOUTH CENTRAL REGION**

Steers:	This Week	Last Week	Last Year
500-600 lbs	\$164.09	\$161.21	\$155.80
600-700 lbs	\$152.37	\$148.35	\$140.24
700-800 lbs	\$139.60	\$137.61	\$131.34

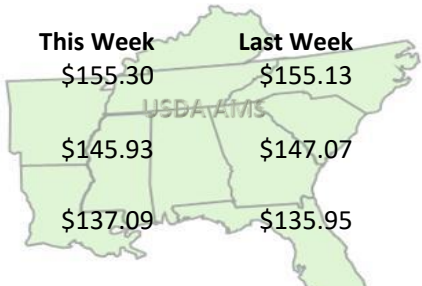


**5 AREA WEEKLY WEIGHTED AVERAGE SLTR STEER PRICE (\$/CWT)**



**SOUTHEAST REGION**

Steers:	This Week	Last Week	Last Year
400-500 lbs	\$155.30	\$155.13	\$149.99
500-600 lbs	\$145.93	\$147.07	\$141.69
600-700 lbs	\$137.09	\$135.95	\$132.25



**USDA Livestock, Poultry, & Grain Market News**

St. Joseph, Missouri  
Phone: 816-676-7000



For detailed state-by-state feeder cattle quotes:

[National Feeder & Stocker Cattle Summary](http://www.ams.usda.gov/LSMarketNews)

<http://www.ams.usda.gov/LSMarketNews>