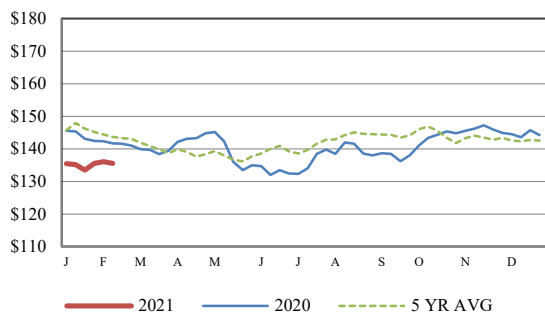


<b>Receipts:</b>	This Week	Last Week	Year Ago
<a href="#">SJ LS850</a>	208,300	270,200	226,800

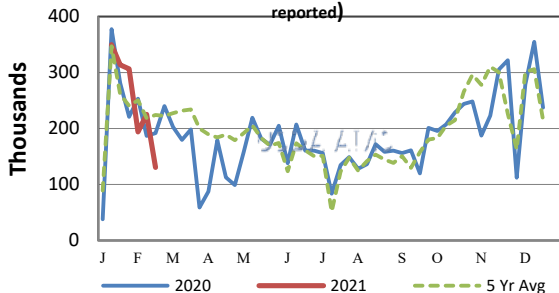
Compared to last week, steers and heifers sold steady to 4.00 lower. The best demand was shown in the Northern Plains on the larger sets of good-doing big-boned yearlings that always show up at auctions this time of year. Ranchers in the Northern Plains are more prepared for the type of winter seen this week and into the middle of next week. Ranchers in Texas and southern Kansas are not used to the regular temperatures to be below zero. Most of the cowboys in the feedyards will earn their keep by making sure that the stock get watered and fed every day. As of Friday February 12, many auctions in Oklahoma and Missouri cancelled their late week auctions as well as early week auctions already announced closures into the middle of next week. Some Northern Plains auctions even cancelled sales as the Polar Vortex moved further South than weather watchers have seen in quite some time. Cattle performance is a key focus now as costs of gain have quickly increased and cattle feeders are very critical of cattle in too heavy of flesh condition. Light fleshed cattle sell easily and top the market. The overfed types that carry too much flesh to be efficient gainers in the yards sell to a narrow outlet at lower market values. Replacement heifer quotes are on most states market reports the past few weeks, as some backgrounders have reputation heifer development programs that have great demand. At Burwell (NE) Livestock Market on Friday a load of 700 lb heifers sold at 172.00, 25.00 to 30.00 higher than their steer mates. In addition, a load of 797 lb heifers sold at 158.00. This week's fed cattle market was established at 114.00 live in the South Plains and dressed sales in Nebraska being traded at 180.00. Boxed beef values continue to be sideways with the Choice cutout closing 2.14 lower at 232.44, while Select was 0.62 higher at 221.41. The Choice - Select spread has narrowed a little from the previous week at 11.03. Cattle Slaughter under federal inspection estimated at 611K for the week, 42K less than last week, and 10K less than a year ago. Auction volume this week included 56 percent weighing over 600 lbs and 42 percent heifers.

[More.....](#)

**CME FEEDER CATTLE INDEX (\$/CWT)**



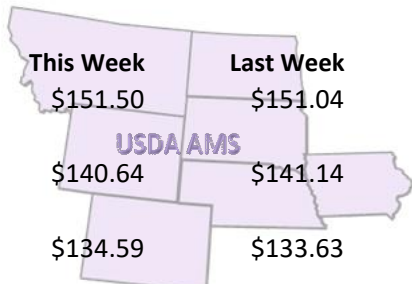
**NATIONWIDE REPORTED WEEKLY FEEDER CATTLE AUCTION RECEIPTS**  
(Receipts vary depending on the number of auctions reported)



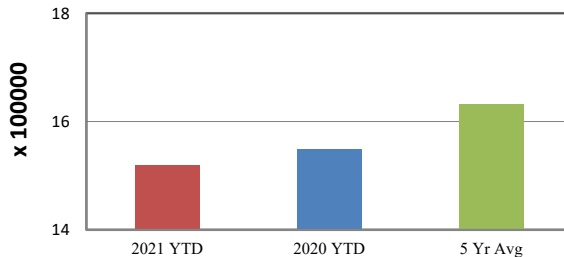
**REGIONAL WEIGHTED AVERAGE FEEDER STEER PRICES**

**NORTH CENTRAL REGION**

Steers:	This Week	Last Week	Last Year
600-700 lbs	\$151.50	\$151.04	\$158.15
700-800 lbs	\$140.64	\$141.14	\$144.22
800-900 lbs	\$134.59	\$133.63	\$136.55

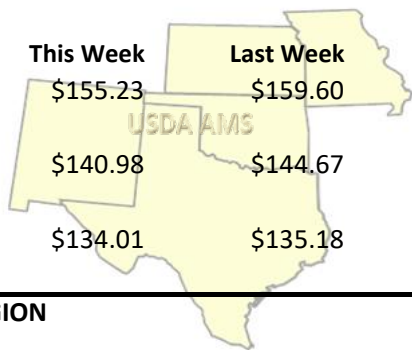


**YEAR TO DATE**

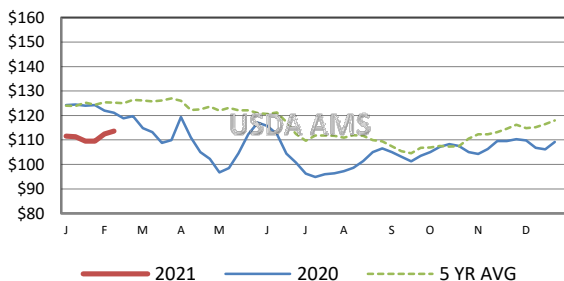


**SOUTH CENTRAL REGION**

Steers:	This Week	Last Week	Last Year
500-600 lbs	\$155.23	\$159.60	\$167.52
600-700 lbs	\$140.98	\$144.67	\$150.35
700-800 lbs	\$134.01	\$135.18	\$139.93

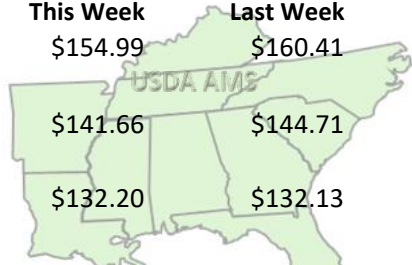


**5 AREA WEEKLY WEIGHTED AVERAGE SLTR STEER PRICE (\$/CWT)**



**SOUTHEAST REGION**

Steers:	This Week	Last Week	Last Year
400-500 lbs	\$154.99	\$160.41	\$160.74
500-600 lbs	\$141.66	\$144.71	\$147.69
600-700 lbs	\$132.20	\$132.13	\$135.15



**USDA Livestock, Poultry, & Grain Market News**

St. Joseph, Missouri  
Phone: 816-676-7000



For detailed state-by-state feeder cattle quotes:

[National Feeder & Stocker Cattle Summary](#)

<http://www.ams.usda.gov/LSMarketNews>