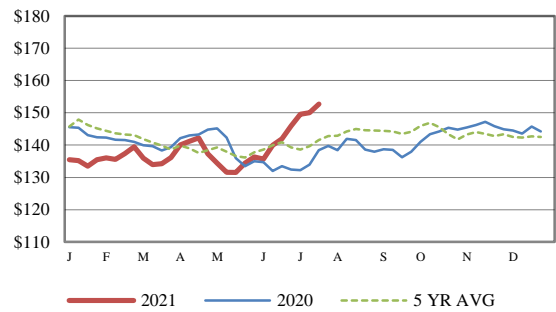


Receipts:	This Week	Last Week	Year Ago
<a href="#">SJ_LS850</a>	443,600	366,700	570,600

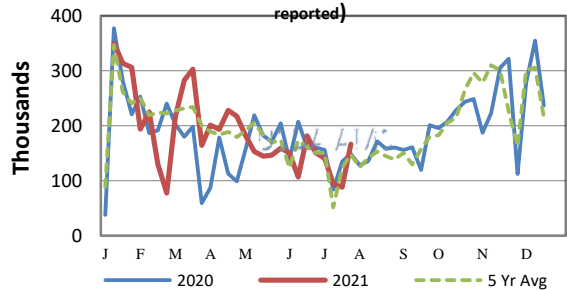
Compared to last week, steers and heifers sold steady to 2.00 higher in the South Central region and steady to 2.00 lower in the Southeast region. Demand was reported from moderate to very good depending on the quality and weighing conditions at auctions in the nation this week. Typical southwest summer weather continues to beat down on the earth in the upper third of the country. North Dakota is coming off one of the hottest and driest Junes on record and the hay stockpile situation in that area as ranchers buy feedstuffs to hold their herds in drought. On a typical year, hay will move from North to South, however market reporters are already seeing hay moving inverse to a normal year. Cooler temperatures that lasted longer than normal has hampered forage tonnage and that is what is needed to feed ruminant and higher protein feedstuffs are easier to procure to mix with the forage. Beef cow slaughter persists as over 55 pct of the country has some sort of drought designation; down near 2 pct this week. Preliminary data covering the first half of 2021, Year-to-Date heifer and beef cow slaughter is 8 pct above a year ago, while total cattle slaughter is 6 pct above a year ago. For the same period, beef cow slaughter is over 19 pct more than the previous five-year average as well as the largest number slaughtered (approx. 1.713 mil head) in the last 11 years. Contraction of the beef cow herd is indicated with that type of increase in the mature cow and fed heifer slaughter. The ag economy remains strong as for the seventh straight month, the Creighton University Rural Mainstreet Index (RMI) remained above growth neutral. According to the monthly survey of bank CEOs in rural areas of a 10-state region dependent on agriculture and/or energy. The overall index for June fell to still strong 70.0 from May's record high of 78.8, with 50.0 being growth neutral. The Boxed beef value slide has sounded like a broken record for five weeks now and Choice has lost over 65.00 since the first of June. The dog-days of summer are upon us with demand shifting to hamburgers and hot dogs. Choice boxed beef closed the week 10.65 lower at 267.94, while Select was 5.62 lower at 251.79 for the same period. On Friday ... [More.....](#)

**CME FEEDER CATTLE INDEX (\$/CWT)**



**NATIONWIDE REPORTED WEEKLY FEEDER CATTLE AUCTION RECEIPTS**

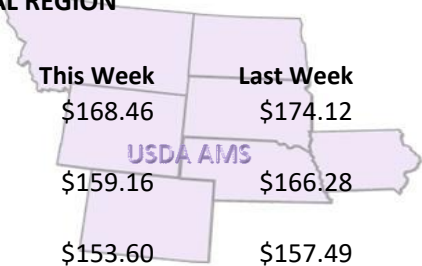
(Receipts vary depending on the number of auctions reported)



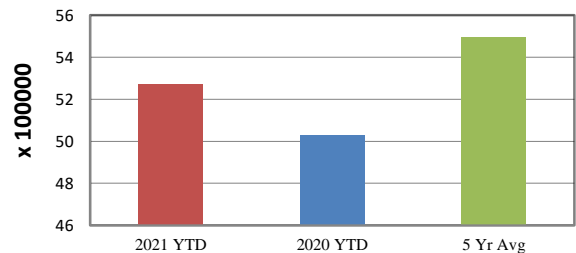
**REGIONAL WEIGHTED AVERAGE FEEDER STEER PRICES**

**NORTH CENTRAL REGION**

Steers:	This Week	Last Week	Last Year
600-700 lbs	\$168.46	\$174.12	\$151.31
700-800 lbs	\$159.16	\$166.28	\$142.78
800-900 lbs	\$153.60	\$157.49	\$137.51



**YEAR TO DATE**

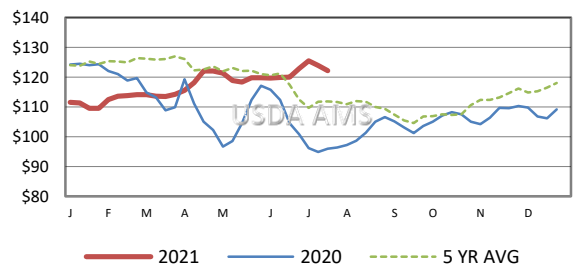


**SOUTH CENTRAL REGION**

Steers:	This Week	Last Week	Last Year
500-600 lbs	\$171.87	\$171.60	\$152.26
600-700 lbs	\$160.80	\$160.75	\$145.21
700-800 lbs	\$153.06	\$151.28	\$139.13

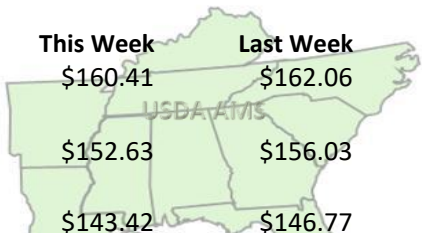


**5 AREA WEEKLY WEIGHTED AVERAGE SLTR STEER PRICE (\$/CWT)**



**SOUTHEAST REGION**

Steers:	This Week	Last Week	Last Year
400-500 lbs	\$160.41	\$162.06	\$144.81
500-600 lbs	\$152.63	\$156.03	\$137.17
600-700 lbs	\$143.42	\$146.77	\$129.81



**USDA Livestock, Poultry, & Grain Market News**

St. Joseph, Missouri  
Phone: 816-676-7000



For detailed state-by-state feeder cattle quotes:

[National Feeder & Stocker Cattle Summary](#)

<http://www.ams.usda.gov/LSMarketNews>