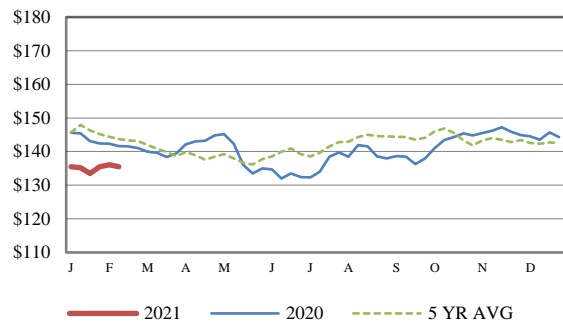


Receipts:	This Week	Last Week	Year Ago
SJ LS850	97,800	208,300	315,100

Compared to last week, steers and heifers at North Central auctions were 1.00 to 5.00 higher. Auction coverage was sparse this week in the Southeast and South Central parts of the country this week and were not tested. Extreme cold temperatures brought livestock commerce to a standstill in those areas. The North Central part of the country is more accustomed to these extreme temperatures as most of their reported auctions are later in the week and weather conditions were not as severe. In Oklahoma and Missouri (two large cow-calf states), only one feeder cattle auction per state was reported with less than 900 head combined between the two. For perspective a year ago this week, Oklahoma and Missouri each contributed 35K plus to this report. Replacement cattle continue to be in demand this week as ranchers look for their next heifers that will make cows for a long time. At Denison (IA) Livestock Auction on Thursday, a package of 861 lb heifers sold for 1250.00 per head. At Lexington (NE) Livestock Auction on Friday, a load of 714 lb heifers sold at 167.00, while their bigger sisters that weighed 820 lbs sold at 154.50. In addition at St Onge (SD) Livestock Auction on Friday, a load of 746 lb heifers sold at 163.00. At Eastern Missouri Commission Co (Bowling Green, MO), cow-calf pairs were in high demand. A few sets of middle aged cows that were bred back in the first stage and had 250 lb calves on them sold from 2200.00 to 2500.00 per pair. Bred heifers in the third stage ready to calve in less than a month rang the bell at 1925.00 to 2025.00 per head. As of Friday afternoon, near 250 loads of fed cattle have been tendered for CME Live Cattle contract delivery. With the February CME Live Cattle contract this week hovering from 115.00 to 117.00 and cash fed cattle at 114.00, most tenders have been retendered at 1 with several being retendered at 2. This procedure puts a little more in the producers pocketbook as the shorts are not too inclined to take cattle at par due to the difficulty of getting a harvest slot for them on the scheduled date of delivery. So far, there has been around 45 percent of the loads reclaimed by the long after playing both sides of the Board...

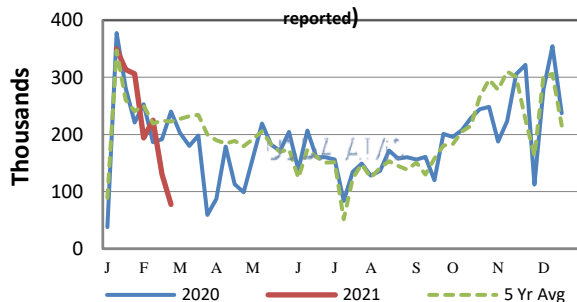
[More.....](#)

CME FEEDER CATTLE INDEX (\$/CWT)



NATIONWIDE REPORTED WEEKLY FEEDER CATTLE AUCTION RECEIPTS

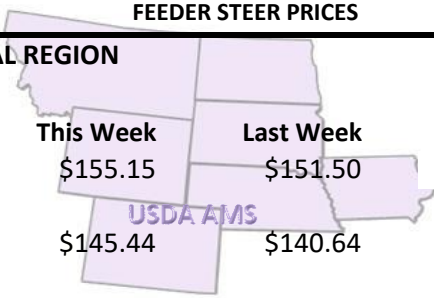
(Receipts vary depending on the number of auctions reported)



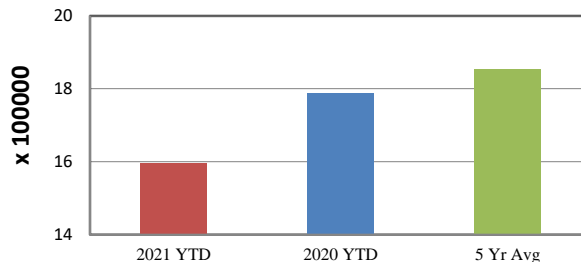
REGIONAL WEIGHTED AVERAGE FEEDER STEER PRICES

NORTH CENTRAL REGION

Steers:	This Week	Last Week	Last Year
600-700 lbs	\$155.15	\$151.50	\$161.67
700-800 lbs	\$145.44	\$140.64	\$149.33
800-900 lbs	\$137.32	\$134.59	\$139.29

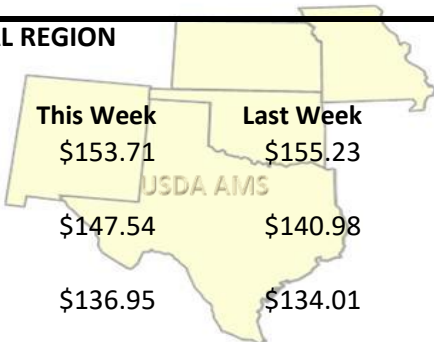


YEAR TO DATE

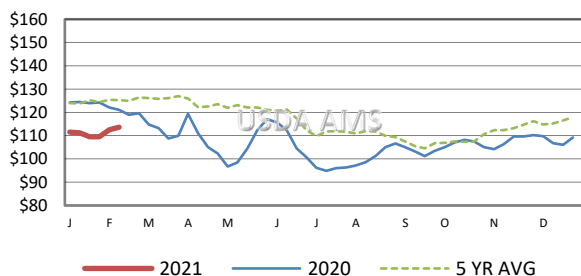


SOUTH CENTRAL REGION

Steers:	This Week	Last Week	Last Year
500-600 lbs	\$153.71	\$155.23	\$173.14
600-700 lbs	\$147.54	\$140.98	\$154.06
700-800 lbs	\$136.95	\$134.01	\$141.42

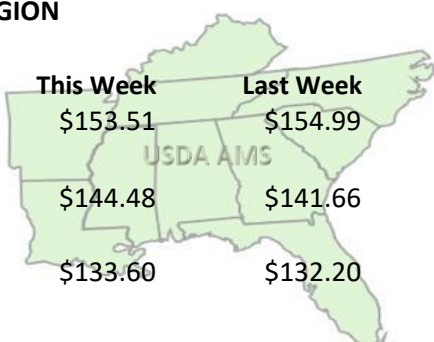


5 AREA WEEKLY WEIGHTED AVERAGE SLTR STEER PRICE (\$/CWT)



SOUTHEAST REGION

Steers:	This Week	Last Week	Last Year
400-500 lbs	\$153.51	\$154.99	\$166.56
500-600 lbs	\$144.48	\$141.66	\$152.89
600-700 lbs	\$133.60	\$132.20	\$139.59



USDA Livestock, Poultry, & Grain Market News

St. Joseph, Missouri
Phone: 816-676-7000



For detailed state-by-state feeder cattle quotes:

[National Feeder & Stocker Cattle Summary](#)

<http://www.ams.usda.gov/LSMarketNews>