

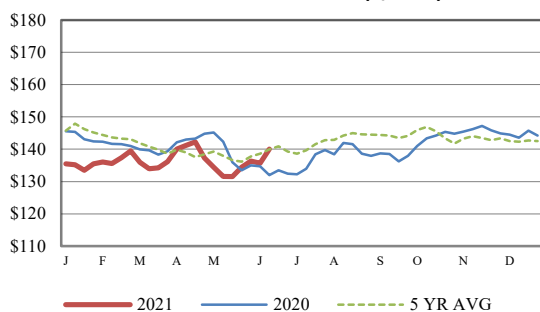
Receipts:	This Week	Last Week	Year Ago
<a href="#">SJ_LS850</a>	282,300	177,300	240,400

Compared to last week, steers and heifers sold uneven; 3.00 lower to 1.00 higher. Demand was reported moderate to good nationwide as receipts returned to normal following the Memorial Day holiday week. Order buyers were wanting cattle to fill empty pens, however most were wanting to take on inventory at lower prices. Cattle feeders are faced with high costs of gain as corn continues to be high at many areas nationwide and the fed cattle market at 120.00, however with the back months of the futures contracts on either side of 130.00 there is still a lot of interest in feeding cattle. The heat has arrived across the midsection of country with a vengeance as many areas that never see 100 degrees in a summer have already experienced that. Couple that with the drought in the

Dakotas makes for a very disconcerting year for many ranchers in the Northern Plains and Upper Midwest. Although still very hot and humid, the weather seemed to break from chances of rain every day and farmers went to the fields in full force to make hay while the sun shines. Most of the coming week looks dry so there should be many tons of hay put up

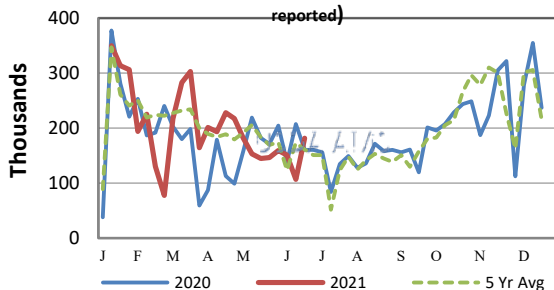
this week as farmers try to get caught up. According to preliminary slaughter data, Year-to-Date Cattle slaughter through May is near 7 percent more than last year and near 6 percent more than the previous five-year average. All classifications of the beef cattle segment (steers, heifers, beef cows and bulls) are around 8 percent more than a year ago and 18.5 percent more than the previous five-year average. Beef cow slaughter has been aggressive this year with almost 1.4 million cows harvested so far this year as of the end of May. The last time that the beef cow numbers were this large at this time was in the contraction year of 2010. Those cows were then sold off and an aggressive heifer slaughter was noted at the same time and just a few short years later, high prices for feeder cattle were noted in 2013 and 2014. Negotiated live trading of fed cattle in the Southern Plains sold at 119.00 to 120.00, while dressed sales in Nebraska sold at mostly 191.00. Choice boxed beef values hit a plateau and closed the week 1.42 lower at 337.56, while Select was 6.52 lower at 305.21 for the same time period. Boxed-beef values [More.....](#)

**CME FEEDER CATTLE INDEX (\$/CWT)**



**NATIONWIDE REPORTED WEEKLY FEEDER CATTLE AUCTION RECEIPTS**

(Receipts vary depending on the number of auctions reported)

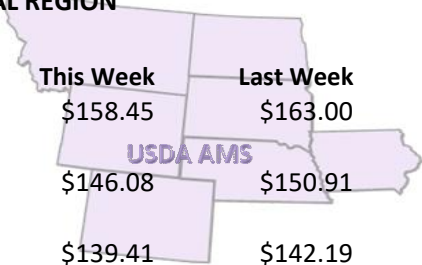


**REGIONAL WEIGHTED AVERAGE**

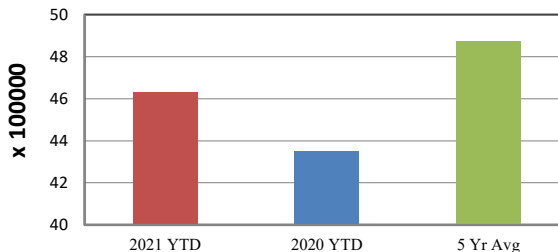
**FEEDER STEER PRICES**

**NORTH CENTRAL REGION**

Steers:	This Week	Last Week	Last Year
600-700 lbs	\$158.45	\$163.00	\$153.21
700-800 lbs	\$146.08	\$150.91	\$141.43
800-900 lbs	\$139.41	\$142.19	\$132.83

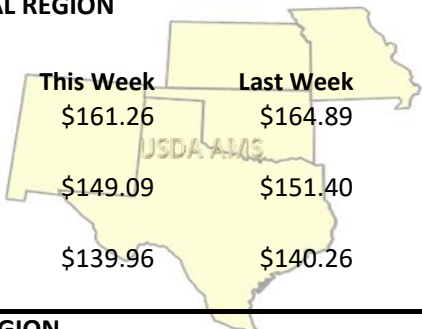


**YEAR TO DATE**

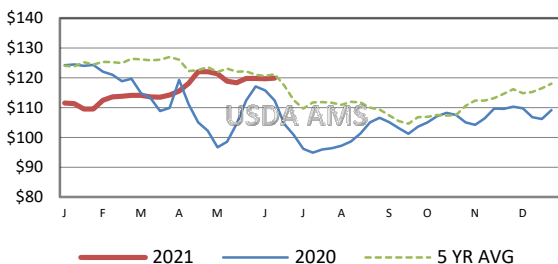


**SOUTH CENTRAL REGION**

Steers:	This Week	Last Week	Last Year
500-600 lbs	\$161.26	\$164.89	\$150.74
600-700 lbs	\$149.09	\$151.40	\$141.23
700-800 lbs	\$139.96	\$140.26	\$131.92

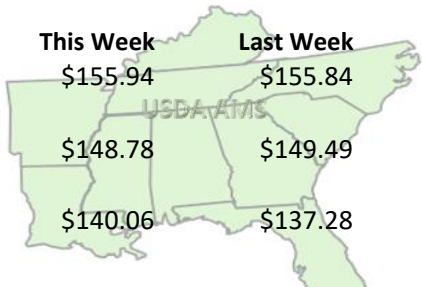


**5 AREA WEEKLY WEIGHTED AVERAGE SLTR STEER PRICE (\$/CWT)**



**SOUTHEAST REGION**

Steers:	This Week	Last Week	Last Year
400-500 lbs	\$155.94	\$155.84	\$149.18
500-600 lbs	\$148.78	\$149.49	\$142.15
600-700 lbs	\$140.06	\$137.28	\$132.36



**USDA Livestock, Poultry, & Grain Market News**

St. Joseph, Missouri  
Phone: 816-676-7000



For detailed state-by-state feeder cattle quotes:

[National Feeder & Stocker Cattle Summary](#)

<http://www.ams.usda.gov/LSMarketNews>