

Receipts:	This Week	Last Week	Year Ago
SJ LS850	396,700	443,600	304,200

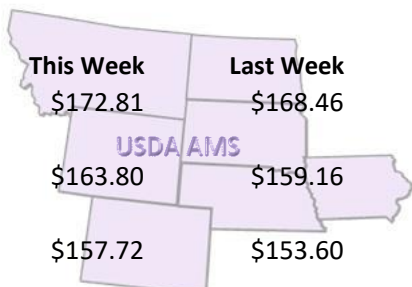
Compared to last week, steers and heifers sold steady to 2.00 higher in the South Central region and steady to 2.00 lower in the Southeast region. Demand was reported from moderate to very good depending on the quality and weighing conditions at auctions in the nation this. Compared to last week, steers and heifers sold uneven; 1.00 lower to 3.00 higher. Demand on weaned calves and yearlings have not waned in the dogdays of summer. Fall calves that are not weaned for 45 days and don't have a vaccination record are only being met with moderate demand. Many feeder heifers found their way to town in the Northern Plains this summer as ranchers try and figure a way out to keep their nucleus cow herd intact as the drought persists. As those heifers that were destined for replacement found their way to a feedyard, spayed heifers in Nebraska have been selling just a few dollars back of their brothers. On Wednesday at Bassett (NE) Livestock Auction, two strings of 827 lb and 843 lb spayed heifers sold at 156.50 and 156.00 respectively. The West Some anecdotal rainfall amounts of less than 1.5 inches out of central South Dakota from June 2020 to June 2021 would leave anyone to wonder what kind of forage could survive those conditions. Boxed beef found support levels around 265.00 mid-week amid a six-week consecutive drop from 340.55 reported on June 3, 2021. Choice boxed beef closed the week 1.31 lower at 266.63, while Select was 1.85 lower at 249.94. On Friday afternoon, the Choice-Select spread was reported at 16.69. Negotiated live trading of fed cattle in the Southern Plains sold 1.00 lower from the previous week at 119.00, while dressed sales in Nebraska sold 1.00 to 2.00 lower from 195.00 to 200.00. Margins continue to bring profits to the bottom line of packers even with the multi-week drop in boxed beef values. Packers are businessmen and they are very sharp when it comes to keeping the pencil pointed...

[More.....](#)

REGIONAL WEIGHTED AVERAGE FEEDER STEER PRICES

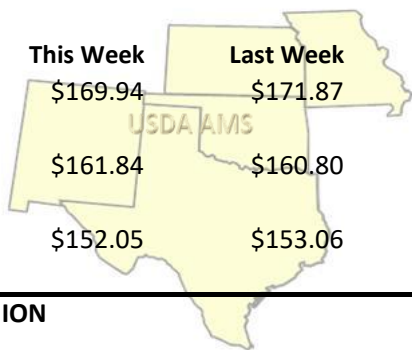
NORTH CENTRAL REGION

Steers:	This Week	Last Week	Last Year
600-700 lbs	\$172.81	\$168.46	\$162.72
700-800 lbs	\$163.80	\$159.16	\$149.02
800-900 lbs	\$157.72	\$153.60	\$141.41



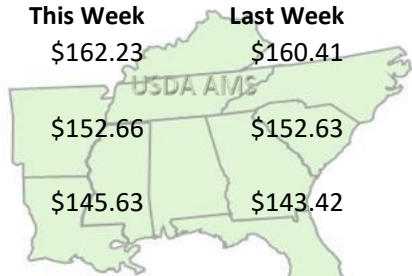
SOUTH CENTRAL REGION

Steers:	This Week	Last Week	Last Year
500-600 lbs	\$169.94	\$171.87	\$152.81
600-700 lbs	\$161.84	\$160.80	\$145.10
700-800 lbs	\$152.05	\$153.06	\$140.48



SOUTHEAST REGION

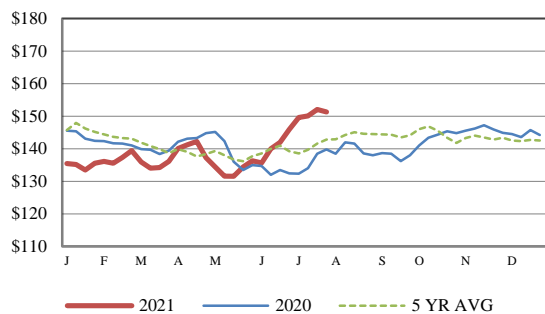
Steers:	This Week	Last Week	Last Year
400-500 lbs	\$162.23	\$160.41	\$146.84
500-600 lbs	\$152.66	\$152.63	\$138.94
600-700 lbs	\$145.63	\$143.42	\$132.08



For detailed state-by-state feeder cattle quotes:

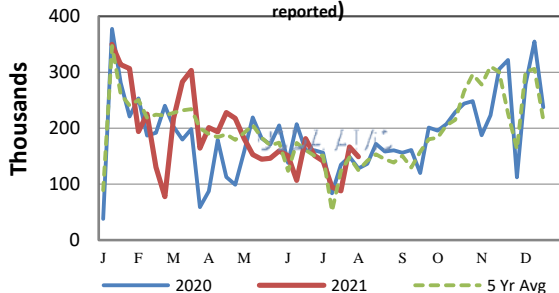
[National Feeder & Stocker Cattle Summary](#)

CME FEEDER CATTLE INDEX (\$/CWT)

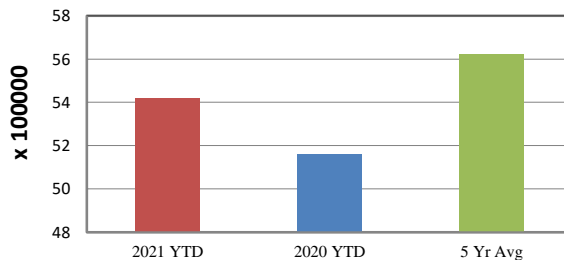


NATIONWIDE REPORTED WEEKLY FEEDER CATTLE AUCTION RECEIPTS

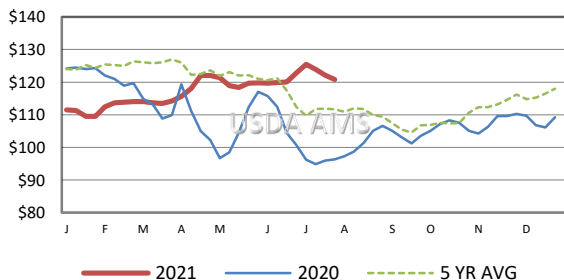
(Receipts vary depending on the number of auctions reported)



YEAR TO DATE



5 AREA WEEKLY WEIGHTED AVERAGE SLTR STEER PRICE (\$/CWT)



USDA Livestock, Poultry, & Grain Market News

St. Joseph, Missouri

Phone: 816-676-7000



<http://www.ams.usda.gov/LSMarketNews>