

Receipts:	This Week	Last Week	Year Ago
<a href="#">SJ_LS850</a>	305,900	387,200	282,500

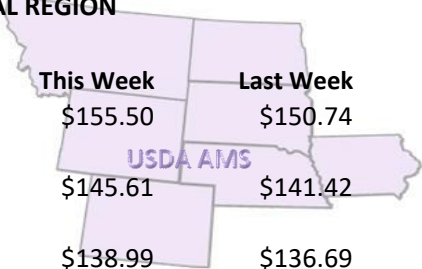
Compared to last week, steers and heifers sold steady to 3.00 higher. Receipts this week are typical for the last full marketing week of a year when some producers want to sell before winter weather really gets here. Some will also defer payment at their local auction markets to the next year. Over the next two weeks, livestock auction volumes will be very limited with several acknowledging the holidays in front of them and letting employees rest up for the receipts that will be substantial the first full week of 2021. There are several special cow sales scheduled across the Plains the next two weeks for an opportunity for cow/calf producers to make financial moves they feel necessary for 2020. Colder weather has spread across this country this week just prior to the official calendar start to winter that is this upcoming Monday. Stockpiled grass or what ranchers could stockpile will go faster as energy needs of cows/calves & grazing cattle increase as the temperatures drop. This week, Winter Storm Gail showed us what ole man winter can do by dropping significant amounts of snow from Ohio and West Virginia up through the Northeast as over 51 million people were under a Winter Storm Warning. This week in the fed cattle arena, the Northern Plains dressed sales were 3.00 lower at 165.00, while trades in the Southern Plains sold steady with live sales at 108.00. Two years ago, dressed sales were 190.00 and live sales were 119.00. The fall/early winter-feeding period has been good so far from a feedyard perspective. A little moisture doesn't hurt near as bad as a 10-inch snow that comes before the ground has a chance to freeze. Retailers completed their beef holiday buying a couple weeks ago and the Choice cutout has dropped over 30.00 in three weeks with over 20.00 of that decline happening last week. On the week, Choice cutout closed 5.25 lower at 208.63, while Select was 1.44 lower at 194.27; as the Choice-Select spread has narrowed to 14.36. Cattle Slaughter under federal inspection estimated at 659 for the week, 6K less than last week and 9K less than a year ago. FIS Hog slaughter facilities are also operating at high levels this week at 2.792 million head. Last year this week was the largest FIS Hog slaughter on record at 2.825 million head. December first Cattle on feed was reported at 100 percent of a year ago; Placements at 91 percent; with Marketings at 98 percent. Next week on Tuesday, the complete list of cold storage inventory items will be released by USDA National Agricultural Statistics Service (NASS). Go to <https://www.nass.usda.gov/> after 3:00 PM ET on Tuesday to retrieve the most recent data. On behalf of the Livestock, Poultry and Grain Market News, we would like to wish safe and happy holiday season. This will be the last National Feeder Cattle summary published for 2020. May you have a very blessed New Year! Auction volume this week included 45 percent weighing over 600 lbs and 41 percent heifers.

[More.....](#)

**REGIONAL WEIGHTED AVERAGE FEEDER STEER PRICES**

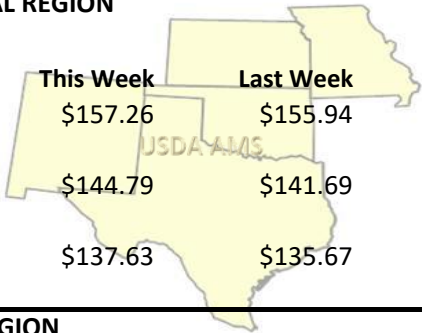
**NORTH CENTRAL REGION**

Steers:	This Week	Last Week	Last Year
600-700 lbs	\$155.50	\$150.74	\$155.65
700-800 lbs	\$145.61	\$141.42	\$148.78
800-900 lbs	\$138.99	\$136.69	\$145.72



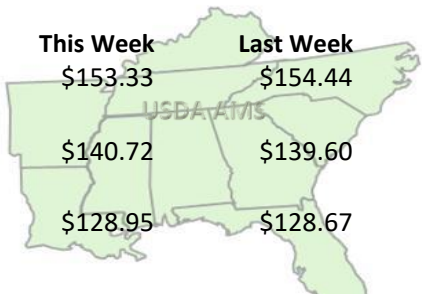
**SOUTH CENTRAL REGION**

Steers:	This Week	Last Week	Last Year
500-600 lbs	\$157.26	\$155.94	\$156.87
600-700 lbs	\$144.79	\$141.69	\$145.81
700-800 lbs	\$137.63	\$135.67	\$146.15

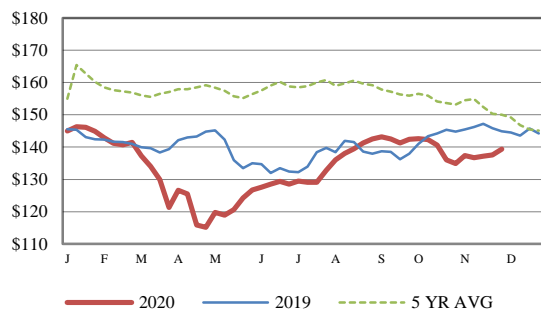


**SOUTHEAST REGION**

Steers:	This Week	Last Week	Last Year
400-500 lbs	\$153.33	\$154.44	\$150.05
500-600 lbs	\$140.72	\$139.60	\$140.49
600-700 lbs	\$128.95	\$128.67	\$133.19

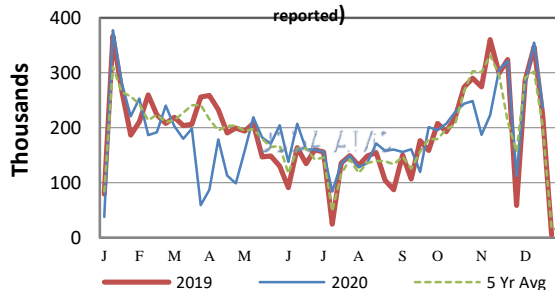


**CME FEEDER CATTLE INDEX (\$/CWT)**

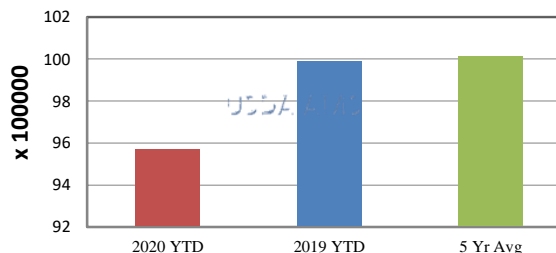


**NATIONWIDE REPORTED WEEKLY FEEDER CATTLE AUCTION RECEIPTS**

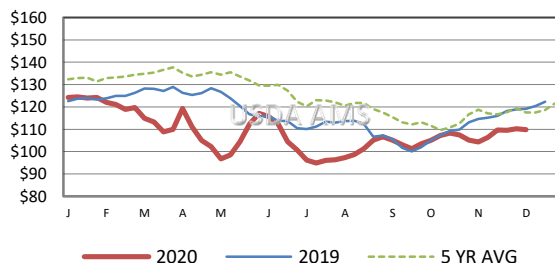
(Receipts vary depending on the number of auctions reported)



**YEAR TO DATE**



**5 AREA WEEKLY WEIGHTED AVERAGE SLTR STEER PRICE (\$/CWT)**



**USDA Livestock, Poultry, & Grain Market News**

St. Joseph, Missouri  
Phone: 816-676-7000



For detailed state-by-state feeder cattle quotes:

[National Feeder & Stocker Cattle Summary](#)

<http://www.ams.usda.gov/LSMarketNews>