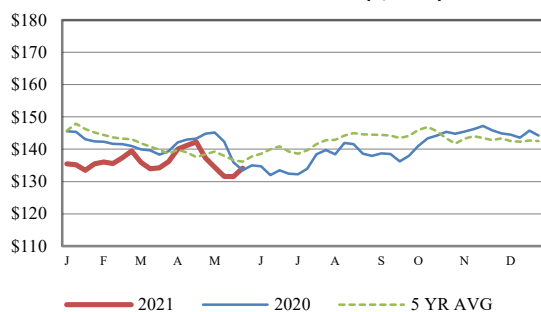


Receipts:	This Week	Last Week	Year Ago
SJ_LS850	227,200	194,800	257,800

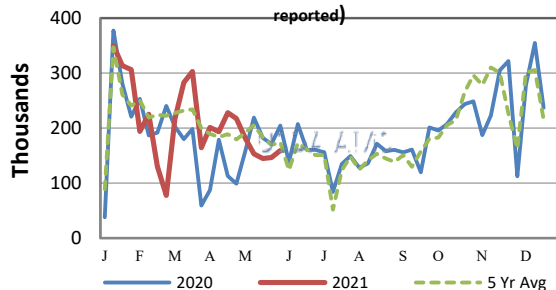
Compared to last week, steers and heifers sold steady to 2.00 higher. Lighter weight feeders saw good demand this week, while heavier weight feeders sold on moderate demand. Year-to-date Auction receipts on this report are around 350K more than a year ago as some auctions are already on two-week schedules prior to the Memorial Day holiday. The total receipts this week are around 32K larger than last week, with most of that coming from video and internet sales. On Thursday, NASS reported their monthly slaughter and meat production numbers for April. Cattle slaughter totaled 2.85M head; up 27 pct from a year ago and beef production was pegged at 2.35 Billion pounds; up 29 pct year over year. Year-to-Date cattle slaughter is around 4.3 pct larger than the previous year and 4.1 pct over the previous 3-year average. Year-to-date through April steer carcass weights are at a record high of 907 lbs; 9 lbs more than last year which runs that race in second place. On Friday, the Cattle On Feed number quoted for May 1, 2021 at 105 percent of a year ago; Placements at 127 percent and Marketings at 133 percent. This is the second highest May 1 inventory since the series began in 1996 and the second month in a row where the On Feed number was pegged at 105 percent of a year ago. Crop Progress published corn planted at 80 percent which is 12 percent above the 5-year avg and soybeans planted 24 points above the 5 year avg at 61 percent. July corn futures were 0.1575 higher for the week closing on Friday at 6.5950 and September corn were 0.1025 higher with Fridays close at 5.7325. July soybean futures were 0.6000 lower for the week with Fridays close at 15.2625 and August soybean were 0.5525 lower with Fridays close at 15.2625. August Feeder Cattle contract was 2.55 higher for the week to close at 153.70, while the June Live Cattle was 2.375 higher at 117.675. Negotiated live trading in the Southern Plains sold at 119.00 to 120.00, while dressed sales in Nebraska sold at 191.00. Choice boxed beef values closed this week 8.23 higher at 325.17, while Select was 9.12 higher at 302.31. The Choice-Select spread narrowed by 0.89 bringing it to 22.86 for the week. Producers continue to struggle with seeing boxed beef prices at very high levels, while they are facing feed costs that continue to rise. Cattle Slaughter under federal inspection estimated at 669K for the week, 29K less than last week, and 97K more than a year ago. Auction volume this week included 55 percent weighing over 600 lbs and 43 percent heifers.

[More.....](#)

CME FEEDER CATTLE INDEX (\$/CWT)



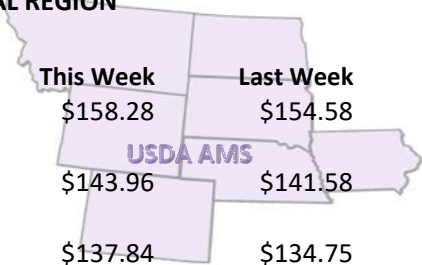
NATIONWIDE REPORTED WEEKLY FEEDER CATTLE AUCTION RECEIPTS
(Receipts vary depending on the number of auctions reported)



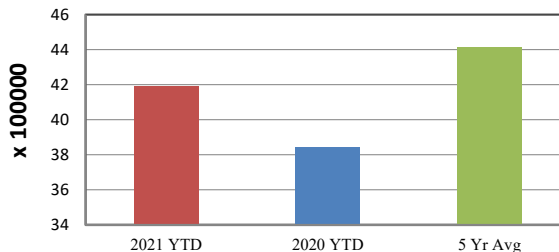
REGIONAL WEIGHTED AVERAGE FEEDER STEER PRICES

NORTH CENTRAL REGION

Steers:	This Week	Last Week	Last Year
600-700 lbs	\$158.28	\$154.58	\$150.55
700-800 lbs	\$143.96	\$141.58	\$139.24
800-900 lbs	\$137.84	\$134.75	\$130.99



YEAR TO DATE

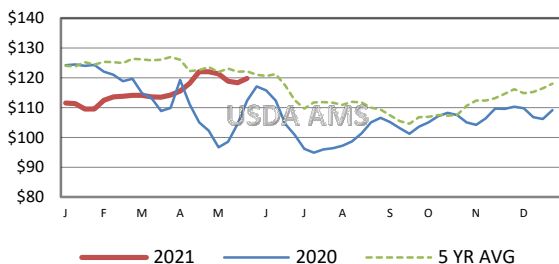


SOUTH CENTRAL REGION

Steers:	This Week	Last Week	Last Year
500-600 lbs	\$161.21	\$158.77	\$154.23
600-700 lbs	\$148.35	\$145.66	\$141.13
700-800 lbs	\$137.61	\$137.74	\$131.59

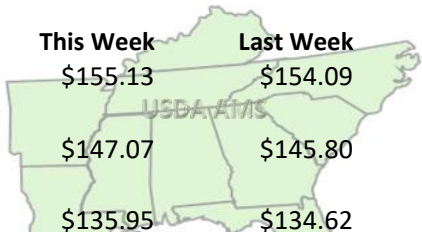


5 AREA WEEKLY WEIGHTED AVERAGE SLTR STEER PRICE (\$/CWT)



SOUTHEAST REGION

Steers:	This Week	Last Week	Last Year
400-500 lbs	\$155.13	\$154.09	\$150.63
500-600 lbs	\$147.07	\$145.80	\$140.39
600-700 lbs	\$135.95	\$134.62	\$130.86



USDA Livestock, Poultry, & Grain Market News

St. Joseph, Missouri
Phone: 816-676-7000



For detailed state-by-state feeder cattle quotes:

[National Feeder & Stocker Cattle Summary](#)

<http://www.ams.usda.gov/LSMarketNews>