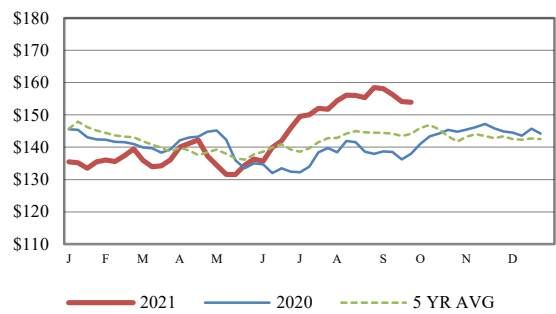


Receipts:	This Week	Last Week	Year Ago
<a href="#">SJ LS850</a>	243,100	263,300	267,500

Compared to last week, steers and heifers sold steady to 3.00 lower. Spring born calves suitable for grazing was met with the best demand in the Dakotas, however those new crop calves are also on the move in the Southern Plains and Midwest are being met with only limited demand. Farmer feeders have begun their fall harvest, and many don't have the time necessary to start a set of calves on feed, so demand may be limited until harvest gets closer to being completed. In addition, this time of year can bring hot days and cool nights and exacerbate health problems on immuno-compromised calves. Not much movement in grain prices this week on the CME as harvest is in full swing. The CME Cattle Complex was mostly higher on the week with the deferred Feeder Cattle contracts being around 2.50 higher on the week. The deferred Live Cattle contracts were over 1.00 higher for the week. For the 10th straight month, the Creighton University Rural Mainstreet Index (RMI) remained above growth neutral, however for the fourth straight month, the overall index has dropped. The September reading was listed at 62.5; down from August 65.3, but still above growth neutral of 50.0. One large factor in the data is that the farmland price index soared to a record high. Boxed beef values continue to decline and has found a 4-week low so far. Choice boxed beef closed the week 11.15 lower at 303.32, while Select was 5.22 lower at 274.53 for the same period. On Friday afternoon, the Choice-Select spread was reported at 28.79, showing that retailers and consumers are demanding Choice quality beef. On Wednesday, the Cold storage report showed Total red meat supplies in freezers were up 4 percent from the previous month but down 6 percent from last year. Total pounds of beef in freezers were up 4 percent from the previous month but down 8 percent from last year. On Friday, the Cattle On Feed number quoted for September 1, 2021 at 99 percent of a year ago; Placements at 102 percent and Marketings at 100 percent. Last year, the Placements on that COF report was 109 percent of 2019. The total On Feed number is the second highest September 1 inventory since the series began in 1996. Weekly Cattle Slaughter under federal inspection estimated at 641K for the week, 16K less than last week, and 14K less than a year ago. Auction volume this week included 49 percent weighing over 600 lbs and 42 percent heifers. [More.....](#)

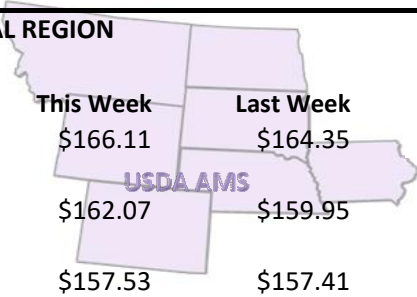
**CME FEEDER CATTLE INDEX (\$/CWT)**



**REGIONAL WEIGHTED AVERAGE FEEDER STEER PRICES**

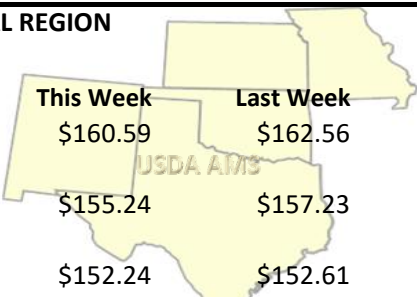
**NORTH CENTRAL REGION**

Steers:	This Week	Last Week	Last Year
600-700 lbs	\$166.11	\$164.35	\$152.59
700-800 lbs	\$162.07	\$159.95	\$150.08
800-900 lbs	\$157.53	\$157.41	\$144.36



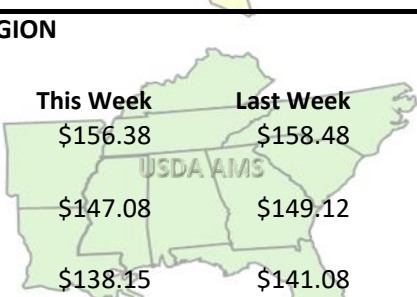
**SOUTH CENTRAL REGION**

Steers:	This Week	Last Week	Last Year
500-600 lbs	\$160.59	\$162.56	\$148.03
600-700 lbs	\$155.24	\$157.23	\$142.35
700-800 lbs	\$152.24	\$152.61	\$141.04



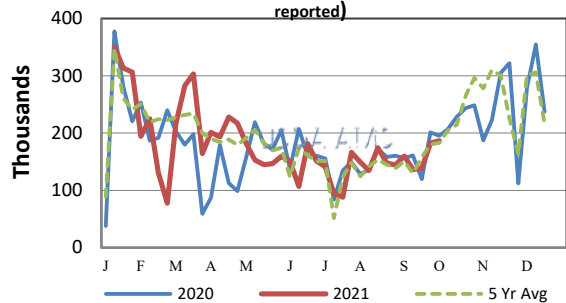
**SOUTHEAST REGION**

Steers:	This Week	Last Week	Last Year
400-500 lbs	\$156.38	\$158.48	\$149.65
500-600 lbs	\$147.08	\$149.12	\$135.10
600-700 lbs	\$138.15	\$141.08	\$130.81

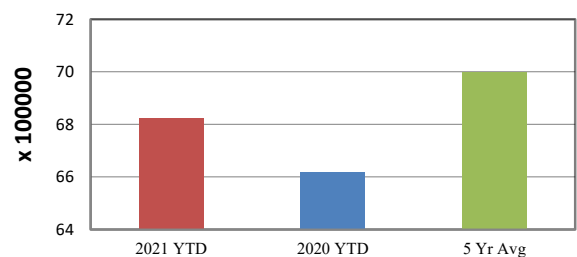


**NATIONWIDE REPORTED WEEKLY FEEDER CATTLE AUCTION RECEIPTS**

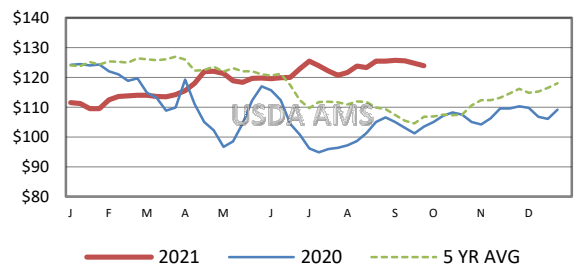
(Receipts vary depending on the number of auctions reported)



**YEAR TO DATE**



**5 AREA WEEKLY WEIGHTED AVERAGE SLTR STEER PRICE (\$/CWT)**



**USDA Livestock, Poultry, & Grain Market News**

St. Joseph, Missouri  
Phone: 816-676-7000



For detailed state-by-state feeder cattle quotes:

[National Feeder & Stocker Cattle Summary](#)

<http://www.ams.usda.gov/LSMarketNews>