

NATIONAL WEEKLY FEEDER & STOCKER CATTLE SUMMARY

USDA LIVESTOCK, POULTRY & GRAIN MARKET NEWS

St. Joseph, Missouri

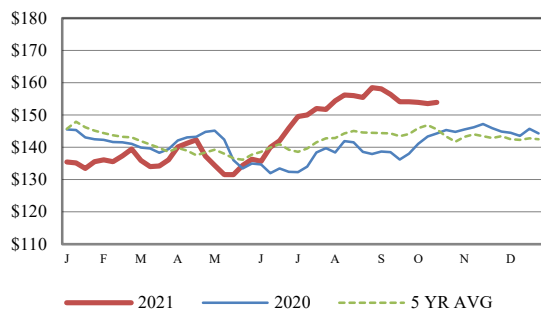
Monday, October 18, 2021

for w/e Saturday, 10/16/21. Email: stjoe.lpgmn@usda.gov

Receipts:	This Week	Last Week	Year Ago
SJ LS850	250,800	264,400	267,600

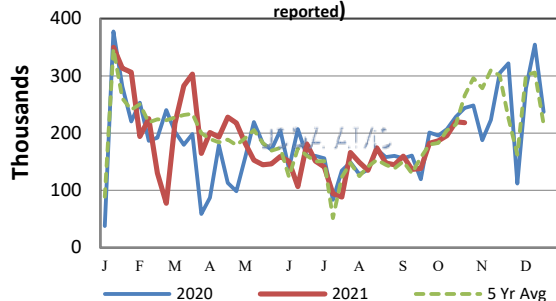
Compared to last week, steers and heifers were uneven; 2.00 lower to 3.00 higher. Demand was reported as moderate to good depending on lot conditions and vaccination status of calves. The calf runs have now dipped the over 600 lbs on this report to under 40 percent; an indication that it is that time of year. This is a week earlier than the last two years with drought in the upper Midwest and Northern Plains being the underlying reason. This week, moisture spread throughout the Plains and it was very much needed for range conditions. The cow herd is in contraction mode this year as the drought and tough economical factors have made ranchers think of ways to keep the cowherd together. Preliminary data from NASS puts the beef cow slaughter rate at around 9 percent more than a year ago and near 20 percent more than the previous 5-year average. Heifer slaughter is 4.3 percent more than last year and 10.7 percent more than the previous 5-year average. Producers will be looking at pregnancy checking females even more serious this year as production costs continue to rise. Hay prices in the Dakotas are high and if early snow comes, those supplies can be used up rather quickly, and the calendar has not flipped to winter yet. The CME Cattle complex had some up and down movement during the week and the weekly trend was firm, while grains struggled for the week as harvest is in full swing in all major growing areas. Nearly all of the Feeder and Live Cattle Contracts were 0.275 to 0.725 higher for the week while the front two months of corn contracts were around five cents lower, and soybeans were 25 to 28 cents lower. Weekly Cattle Slaughter under federal inspection estimated at 646K for the week, 11K less than last week, and 13K less than a year ago. Boxed beef found support and were mostly flat for the week. Choice boxed beef closed the week 3.03 lower at 2800.24, while Select was 2.12 lower at 260.62. On Friday afternoon, the Choice-Select spread was reported at 19.62. Negotiated live trading of fed cattle in the Southern Plains sold steady from the previous week at 124.00, while dressed sales in Nebraska sold steady at 196.00. There have been 56 loads of cattle tendered for delivery so far this month off the CME Live Cattle contract. Auction volume this week included 39 percent weighing over 600 lbs and 43 percent heifers. [More.....](#)

CME FEEDER CATTLE INDEX (\$/CWT)



NATIONWIDE REPORTED WEEKLY FEEDER CATTLE AUCTION RECEIPTS

(Receipts vary depending on the number of auctions reported)



REGIONAL WEIGHTED AVERAGE FEEDER STEER PRICES

NORTH CENTRAL REGION

Steers:	This Week	Last Week	Last Year
600-700 lbs	\$167.83	\$167.33	\$151.73
700-800 lbs	\$161.14	\$159.21	\$145.20
800-900 lbs	\$160.30	\$158.53	\$142.99

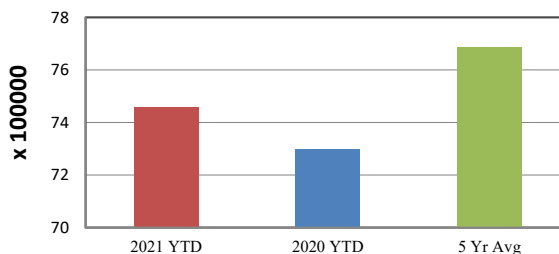
SOUTH CENTRAL REGION

Steers:	This Week	Last Week	Last Year
500-600 lbs	\$158.59	\$160.31	\$144.07
600-700 lbs	\$153.55	\$152.50	\$139.10
700-800 lbs	\$153.87	\$152.44	\$139.01

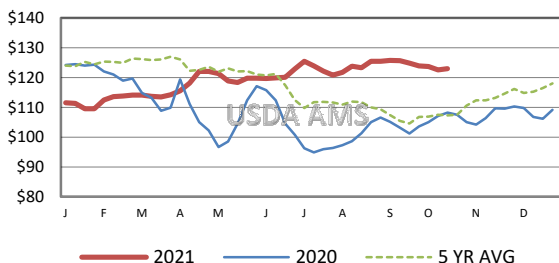
SOUTHEAST REGION

Steers:	This Week	Last Week	Last Year
400-500 lbs	\$153.63	\$152.56	\$145.13
500-600 lbs	\$144.85	\$144.59	\$134.60
600-700 lbs	\$136.76	\$136.17	\$131.44

YEAR TO DATE



5 AREA WEEKLY WEIGHTED AVERAGE SLTR STEER PRICE (\$/CWT)



USDA Livestock, Poultry, & Grain Market News

St. Joseph, Missouri
Phone: 816-676-7000



For detailed state-by-state feeder cattle quotes:

[National Feeder & Stocker Cattle Summary](#)

<http://www.ams.usda.gov/LSMarketNews>