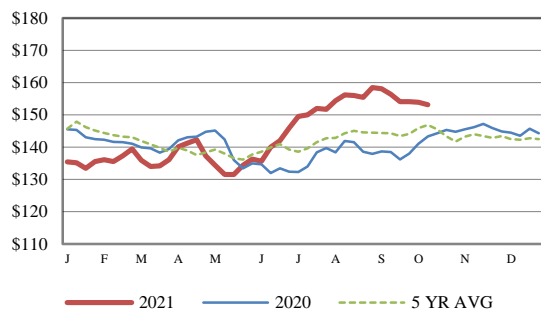


Receipts:	This Week	Last Week	Year Ago
SJ LS850	264,400	218,900	272,800

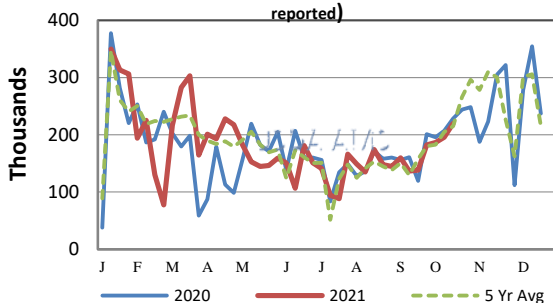
Compared to last week, the first full week of October which is annually the month with the most pressure for spring-born calves, sold unevenly steady from 5.00 higher to spots 5.00 lower depending on regions, with the best demand on high quality calves in the Northern Plains. True yearlings over 800 lbs continue to sell with good demand and in most instances sold steady to 3.00 higher as yearlings are getting harder to find each week. Again, this week lot of calves moving through the Northern Plains especially in South Dakota where in Fort Pierre on Friday sold over 8,000 head with near 530 head of 400-450 lbs steers averaging 418 lbs sold with a weighted average price of 205.82 and 837 head of 500-550 lb steers averaging 526 lbs sold for a weighted average price of 190.88. St. Onge on Friday sold over 7300 head with similar results on light calves weighing under 550 lbs and Phillip, SD on Tuesday sold over 5,000 head with 294 had of yearling steers averaging 918 lbs sold with a weighted average price of 161.93. Bassett, NE on Wednesday sold 453 head of yearling steers averaging 875 lbs for a weighted average price of 163.85 and 62 head of 1000 lb yearling steers in Ogallala, NE on Thursday sold for 161.00. Overall, the feeder cattle market keeps moving right along at a brisk pace as we start October. CME cattle futures had strong gains this week through Thursday before falling off on Friday with light losses, but from Friday through this past Friday's close Feeder cattle contracts for October jumped near 6.70 and November gained over 8.00 as on Thursday October and November feeder contracts were up near 3.50 and both closed over 1.60 on Thursday. Friday's close had October Feeder cattle closing at 159.47 and November at 161.15. This help to energize feeder cattle market this week as this has been the best run-up in feeder cattle contracts in over four weeks. Fed cattle market this week was steady to firm ranging from 122.00-124.00 but with more broad participation from the packer at 124.00. Boxed beef values continue to correct with Choice closing Friday 2.43 lower at 283.77 and Select closing 1.70 lower at 262.74 compared to last Friday's close with Choice at 292.36 and Select at 264.84. Daily Livestock Slaughter under Federal Inspection on Friday week to date 657,000, last week 637,000 and year ago 637,000. Auction volume this week included 41 percent weighing over 600 lbs and 39 percent heifers. [More.....](#)

CME FEEDER CATTLE INDEX (\$/CWT)



NATIONWIDE REPORTED WEEKLY FEEDER CATTLE AUCTION RECEIPTS

(Receipts vary depending on the number of auctions reported)



REGIONAL WEIGHTED AVERAGE FEEDER STEER PRICES

NORTH CENTRAL REGION

Steers:	This Week	Last Week	Last Year
600-700 lbs	\$167.33	\$165.63	\$152.56
700-800 lbs	\$159.21	\$157.32	\$148.32
800-900 lbs	\$158.53	\$155.06	\$144.70

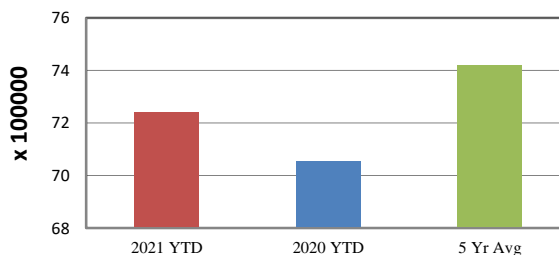
SOUTH CENTRAL REGION

Steers:	This Week	Last Week	Last Year
500-600 lbs	\$160.31	\$156.69	\$146.60
600-700 lbs	\$152.50	\$151.27	\$142.50
700-800 lbs	\$152.44	\$151.34	\$141.36

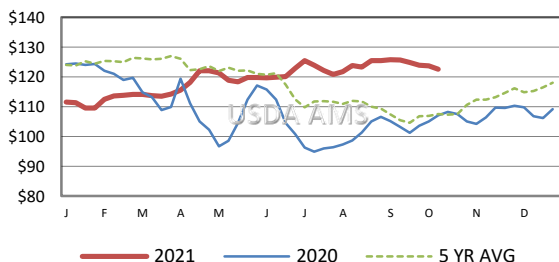
SOUTHEAST REGION

Steers:	This Week	Last Week	Last Year
400-500 lbs	\$152.56	\$152.39	\$146.13
500-600 lbs	\$144.59	\$143.89	\$136.87
600-700 lbs	\$136.17	\$135.58	\$130.21

YEAR TO DATE



5 AREA WEEKLY WEIGHTED AVERAGE SLTR STEER PRICE (\$/CWT)



USDA Livestock, Poultry, & Grain Market News

St. Joseph, Missouri
Phone: 816-676-7000



For detailed state-by-state feeder cattle quotes:

[National Feeder & Stocker Cattle Summary](#)

<http://www.ams.usda.gov/LSMarketNews>