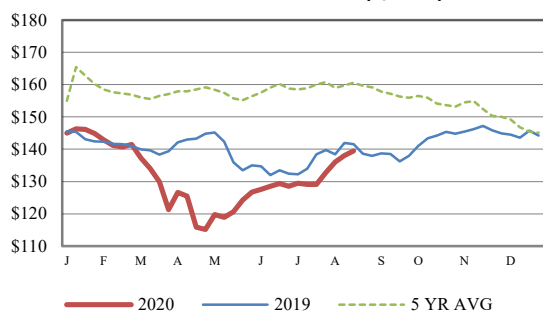


Receipts:	This Week	Last Week	Year Ago
SJ LS850	499,600	185,000	450,100

Compared to last week, steers and heifers sold steady to 3.00 higher. Order buyers and farmer feeders were front and center ready to procure cattle throughout this week. Drought continues to persist this week with 54 percent of the country being in some sort of drought designation. This marks the fourth consecutive week over 50 percent. One region of note would be in Wyoming and creeping into Northwest Nebraska. Some producers in those areas are contemplating early weaning of calves currently. This week's CME Cattle complex was a mixed bag as the week was a yo-yo, but did not make any big swings one way or another. This sideways action at the CME could be viewed as a friendly; as the largest single day move this week on any of the 6 front Cattle contracts was 1.33 lower. Compared to last Friday's closes, both Live and Feeder Cattle contracts were slightly higher to around 1.50 lower. Every year, producers are trying to get long or short yearling cattle marketed before the Labor Day holiday and this year has been no exception. The first full week in August brought around 11 percent more cattle to the sale barns than a year ago. Cash cattle trade this week reported 3.00 higher in the Southern Plains at 100.00 while dressed sales in Nebraska were also 3.00 higher at 163.00. Readily available fed slaughter cattle numbers remain tighter in the Northern Plains and the Southern Plains continue to see supplies outnumber slaughter capacity. Boxed beef cut out values have been trading around the 204.00 level as export business continues to keep the market current, however domestic consumer demand remains sluggish as food service business and restaurant traffic remains sluggish. This morning's Choice boxed beef was reported at 204.99, 1.73 higher than last Friday's close. Select cutout was reported at 192.79, 2.90 higher than last Friday's close. Estimated slaughter under federal inspection this week was reported at a 633K, 5k less than last week, and 14K less than last year. Year-to-Date Estimated Cattle Slaughter Under Federal Inspection is reportedly 5.2 percent lower than last year, while beef production is 2.5 percent behind a year ago. Auction volume this week included 57 percent weighing over 600 lbs and 38 percent heifers.

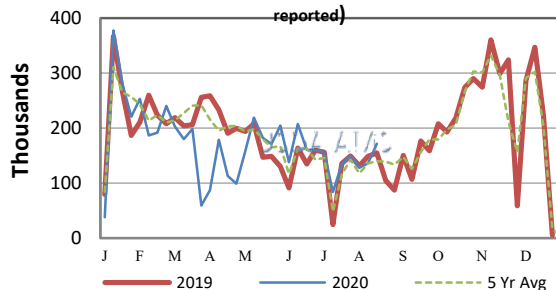
[More.....](#)

CME FEEDER CATTLE INDEX (\$/CWT)



NATIONWIDE REPORTED WEEKLY FEEDER CATTLE AUCTION RECEIPTS

(Receipts vary depending on the number of auctions reported)



REGIONAL WEIGHTED AVERAGE FEEDER STEER PRICES

NORTH CENTRAL REGION

Steers:	This Week	Last Week	Last Year
600-700 lbs	\$156.39	\$153.58	\$162.68
700-800 lbs	\$146.59	\$145.23	\$153.73
800-900 lbs	\$144.49	\$140.86	\$143.87

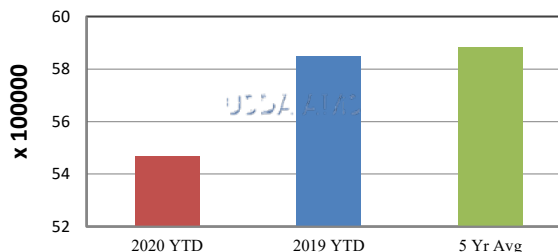
SOUTH CENTRAL REGION

Steers:	This Week	Last Week	Last Year
500-600 lbs	\$158.38	\$154.22	\$157.23
600-700 lbs	\$149.82	\$148.10	\$150.82
700-800 lbs	\$142.57	\$140.20	\$143.81

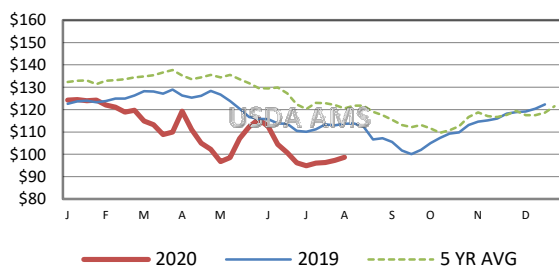
SOUTHEAST REGION

Steers:	This Week	Last Week	Last Year
400-500 lbs	\$149.64	\$148.82	\$148.68
500-600 lbs	\$140.90	\$139.90	\$141.71
600-700 lbs	\$133.11	\$134.26	\$135.43

YEAR TO DATE



5 AREA WEEKLY WEIGHTED AVERAGE SLTR STEER PRICE (\$/CWT)



USDA Livestock, Poultry, & Grain Market News

St. Joseph, Missouri
Phone: 816-676-7000



For detailed state-by-state feeder cattle quotes:

[National Feeder & Stocker Cattle Summary](#)

<http://www.ams.usda.gov/LSMarketNews>