

**AUCTION SUMMARY**

<b>AMS 2023</b>		6,661		Tuesday	
<b>Philip Livestock Auction</b>					
Philip, SD					
Feeder Steers	300-400 lbs	217.50-227.50	Feeder Heifers	300-400 lbs	168.00-185.00
Medium &	400-500 lbs	182.00-211.00	Medium &	400-500 lbs	160.00-174.00
Large #1	500-600 lbs	170.50-189.00	Large #1	500-600 lbs	154.00-175.50
	600-700 lbs	168.00-183.75		600-700 lbs	152.50-157.50
	700-800 lbs	167.00-169.00		700-800 lbs	152.50-155.00

<b>AMS 1249</b>		2,282		Tuesday	
<b>Ozarks Regional Stockyards</b>					
West Plains, MO					
Feeder Steers	400-500 lbs	172.00-182.00	Feeder Heifers	300-400 lbs	150.00-155.00
Medium &	500-600 lbs	167.00-177.00	Medium &	400-500 lbs	144.00-159.00
Large #1	600-700 lbs	158.00-171.00	Large #1	500-600 lbs	140.00-152.00
	700-800 lbs	152.50-156.00		600-700 lbs	143.00-149.00
	800-900 lbs	153.00-154.00		700-800 lbs	146.00-148.00

<b>AMS 1815</b>		2,158		Tuesday	
<b>Kingsville Livestock Auction</b>					
Kingsville, MO					
Feeder Steers	500-600 lbs	164.00-187.00	Feeder Heifers	400-500 lbs	153.00-161.00
Medium &	600-700 lbs	160.00	Medium &	500-600 lbs	150.50-161.50
Large #1	700-800 lbs	163.00-174.00	Large #1	600-700 lbs	149.75
	800-900 lbs	156.00-166.00		700-800 lbs	140.50-153.25
	900-1000 lbs	155.50-155.85		800-900 lbs	132.50

**CHICAGO MERCANTILE EXCHANGE LIVESTOCK FUTURES SETTLEMENT**

<b>Live Cattle</b>		<b>Change</b>	<b>Feeder Cattle</b>		<b>Change</b>
Oct	127.220	0.400	Oct	156.500	0.520
Dec	131.570	0.120	Nov	158.470	(1.300)
Feb	136.950	0.570	Jan	158.950	(1.650)

**CHICAGO BOARD OF TRADE GRAIN FUTURES SETTLEMENTS**

<b>Corn</b>		<b>Change</b>	<b>Soybeans</b>		<b>Change</b>
Dec	5.5725	0.1375	Nov	12.3925	0.0113
Mar	5.6600	0.1375	Jan	12.4975	0.0225
May	5.6975	0.1350	Mar	12.5900	0.0225

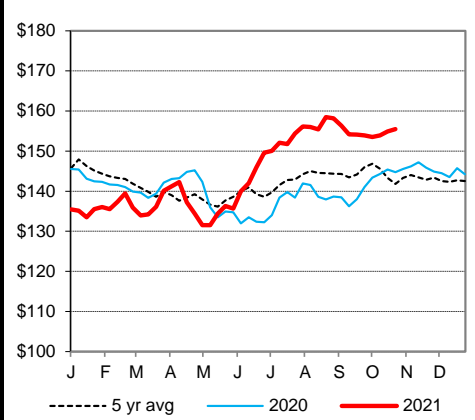
<b>KANSAS CITY BOARD OF TRADE</b>		<b>Wheat</b>	<b>Change</b>
		Dec	7.8275 0.0550
		Mar	7.8575 0.0550
		May	7.8550 0.0525

<b>AMS 2466</b>		Wednesday	
<b>5 AREA WKLY ACCUMULATED WTD AVG SLAUGHTER CATTLE PRICE</b>			
	<b>Head Count</b>	<b>Avg Weight</b>	<b>Avg Price</b>
Live Steer	5,945	1,399	125.09
Live Heifer	6,053	1,213	124.61
Dressed Steer	1,896	946	199.74
Dressed Heifer	1,529	868	199.83

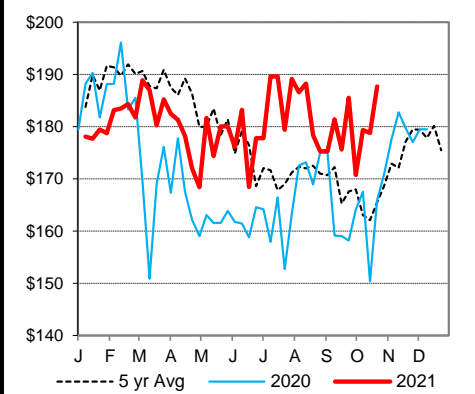
<b>AMS 2453</b>		Wednesday	
<b>DAILY ESTIMATED BOXED BEEF CUTOUT VALUES</b>			
<b>Choice</b>	<b>Select</b>	<b>Choice Cuts</b>	88 loads
<b>600-900#</b>	<b>600-900#</b>	<b>Select Cuts</b>	45 loads
283.63	261.69	<b>Trimmings</b>	8 loads
(1.13)	(0.85)	<b>Grinds</b>	21 loads

<b>SJ LS710</b>		<b>AMS 1823</b>		Wednesday	
<b>ESTD DAILY CATTLE SLAUGHTER</b>					
Wednesday	122,000	<b>Oklahoma National Stockyards</b>			
Week Ago (est)	121,000	Avg Dressing			
Year Ago (act)	117,000	<b>Pct Lean</b>			
Wk to date (est)	366,000	<b>Breaking</b>	75-80	61.00-66.00	
Last Week (est)	362,000	<b>Boning</b>	80-85	55.00-60.00	
Last Year (act)	352,000	<b>Lean</b>	85-90	51.00-57.00	
<b>Previous Day Estimated:</b>		<b>Steer and Heifer</b>		Tuesday	
		<b>Cow and Bull</b>		96,000	
				26,000	

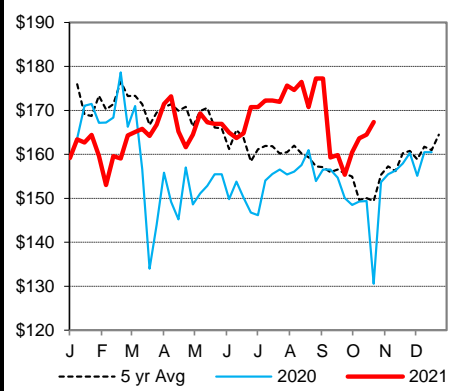
**CME Feeder Cattle Index**



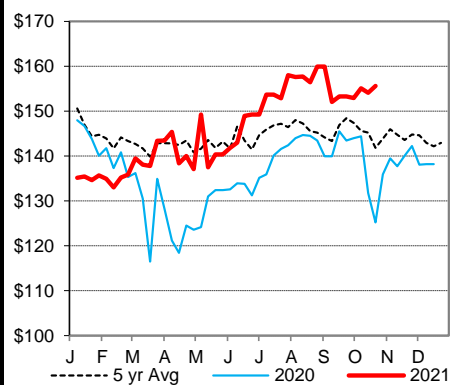
**Oklahoma City 400-500 lb Steer Price**



**Oklahoma City 500-600 lb Steer Price**



**Oklahoma City 700-800 lb Steer Price**



St. Joseph, Missouri  
Phone: 816-676-7000  
Email: stjoe.lpgmn@usda.gov  
<http://www.ams.usda.gov/LSMarketNews>