

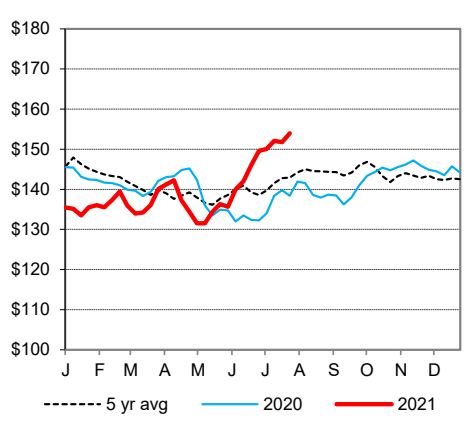
AUCTION SUMMARY

AMS 2023		3,657		Tuesday	
Philip Livestock Auction		Philip, SD			
Feeder Steers	500-600 lbs	178.00	Feeder Heifers	500-600 lbs	170.00
Medium &	600-700 lbs	168.00-180.00	Medium &	600-700 lbs	160.00-167.00
Large #1	700-800 lbs	163.00-171.00	Large #1	700-800 lbs	152.25-160.00
	800-900 lbs	152.25-162.50		800-900 lbs	144.50-151.50
	900-1000 lbs	148.50-158.25		900-1000 lbs	131.50-144.25

AMS 1249		2,044		Tuesday	
Ozarks Regional Stockyards		West Plains, MO			
Feeder Steers	400-500 lbs	196.00	Feeder Heifers	300-400 lbs	162.50-165.00
Medium &	500-600 lbs	167.00-181.00	Medium &	400-500 lbs	154.00-168.00
Large #1	600-700 lbs	157.00-168.00	Large #1	500-600 lbs	149.00-158.00
	700-800 lbs	151.00-164.00		600-700 lbs	144.00-156.00
	800-900 lbs	145.50-152.00		700-800 lbs	144.50-145.50

AMS 1815		989		Tuesday	
Kingsville Livestock Auction		Kingsville, MO			
Feeder Steers	400-500 lbs	178.00-184.00	Feeder Heifers	400-500 lbs	162.00-170.00
Medium &	500-600 lbs	175.00-184.00	Medium &	500-600 lbs	152.50-161.25
Large #1	600-700 lbs	163.00-176.00	Large #1	600-700 lbs	150.00-158.00
	700-800 lbs	155.50-163.50		700-800 lbs	147.75-150.00
	800-900 lbs	147.75		800-900 lbs	

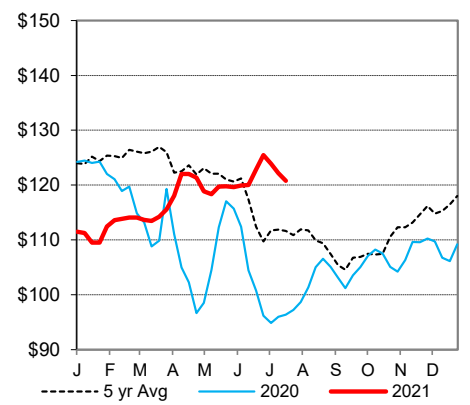
CME Feeder Cattle Index



CHICAGO MERCANTILE EXCHANGE LIVESTOCK FUTURES SETTLEMENT Wednesday

Live Cattle			Feeder Cattle		
		Change			Change
Aug	123.075	0.150	Aug	160.175	(0.525)
Oct	128.525	0.100	Sep	163.450	(0.550)
Dec	133.500	0.025	Oct	165.575	(0.375)

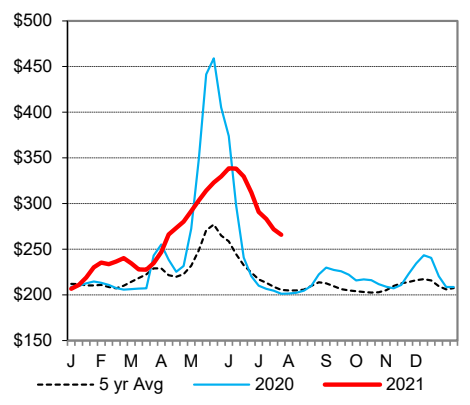
5 Area Wkly Wtd Avg Sltr Steer Price



CHICAGO BOARD OF TRADE GRAIN FUTURES SETTLEMENTS Wednesday

Corn			Soybeans		
		Change			Change
Sep	5.4925	0.0050	Aug	14.3200	0.1375
Dec	5.4900	0.0276	Sep	13.7025	0.0325
Mar	5.5675	0.0300	Nov	13.6100	0.0150

Weekly Choice Cutout



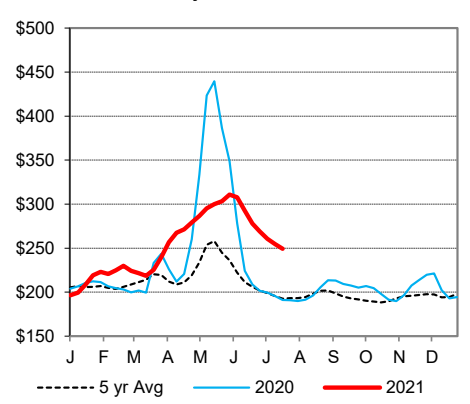
KANSAS CITY BOARD OF TRADE Wednesday

Wheat		
		Change
Sep	6.5950	0.1800
Dec	6.7075	0.1800
Mar	6.7825	0.1825

AMS 2466 Wednesday

5 AREA WKLY ACCUMULATED WTD AVG SLAUGHTER CATTLE PRICE			
	Head Count	Avg Weight	Avg Price
Live Steer	2,764	1,489	122.78
Live Heifer	0	N/A	N/A
Dressed Steer	1,769	942	200.75
Dressed Heifer	0	N/A	N/A

Weekly Select Cutout



AMS 2453 Wednesday

DAILY ESTIMATED BOXED BEEF CUTOUT VALUES			
Choice	Select	Choice Cuts	
600-900#	600-900#	Select Cuts	
273.16	256.12	Trimnings	77 loads
3.43	2.18	Grinds	30 loads
			15 loads
			15 loads

SJ LS710 Tuesday

ESTD DAILY CATTLE SLAUGHTER		Oklahoma National Stockyards	
			Avg Dressing Price
Wednesday	120,000		
Week Ago (est)	117,000		
Year Ago (act)	119,000		
Wk to date (est)	358,000		
Last Week (est)	349,000		
Last Year (act)	355,000		
Previous Day Estimated:	Steer and Heifer	94,000	
	Cow and Bull	25,000	

St. Joseph, Missouri
Phone: 816-676-7000
Email: stjoe.lpgmn@usda.gov
<http://www.ams.usda.gov/LSMarketNews>