

AUCTION SUMMARY

AMS 2025		4,400		Thursday	
Mobridge Livestock Exchange					
Mobridge, SD					
Feeder Steers	300-400 lbs	212.00-227.50	Feeder Heifers	200-300 lbs	188.00-189.50
Medium &	400-500 lbs	187.00-224.00	Medium &	300-400 lbs	172.00-185.00
Large #1	500-600 lbs	167.00-185.00	Large #1	400-500 lbs	156.00-182.00
	600-700 lbs	160.00-174.75		500-600 lbs	149.00-168.00
	700-800 lbs			600-700 lbs	149.00-159.00

AMS 2099		3,917		Thursday	
Stockmen's Livestock Exchange					
Dickinson, ND					
Feeder Steers	300-400 lbs	199.00-210.00	Feeder Heifers	300-400 lbs	154.50-170.00
Medium &	400-500 lbs	178.50-213.25	Medium &	400-500 lbs	148.00-169.00
Large #1	500-600 lbs	158.75-190.00	Large #1	500-600 lbs	145.00-156.00
	600-700 lbs	150.00-167.85		600-700 lbs	135.50-149.00
	700-800 lbs	148.50-166.75		700-800 lbs	132.25-139.50

AMS 1828		3,709		Thursday	
Woodward Livestock Auction					
Woodward, OK					
Feeder Steers	400-500 lbs	165.00-172.50	Feeder Heifers	400-500 lbs	135.00-154.00
Medium &	500-600 lbs	146.00-168.00	Medium &	500-600 lbs	125.00-150.00
Large #1	600-700 lbs	135.00-167.00	Large #1	600-700 lbs	128.00-148.00
	700-800 lbs	137.50-162.50		700-800 lbs	145.00-152.00
	800-900 lbs	135.50-156.00		800-900 lbs	133.00-146.00

CHICAGO MERCANTILE EXCHANGE LIVESTOCK FUTURES SETTLEMENT Friday

Live Cattle			Feeder Cattle		
		Change			Change
Oct	124.100	(0.870)	Oct	155.420	(0.820)
Dec	128.320	(1.220)	Nov	156.900	(2.170)
Feb	133.500	(1.270)	Jan	157.320	(2.670)

CHICAGO BOARD OF TRADE GRAIN FUTURES SETTLEMENTS Friday

Corn			Soybeans		
		Change			Change
Dec	5.3800	0.0575	Nov	12.2050	(0.0350)
Mar	5.4675	0.0525	Jan	12.3075	(0.0275)
May	5.5075	0.0500	Mar	12.3975	(0.0375)

KANSAS CITY BOARD OF TRADE			Wheat		
		Change			Change
			Dec	7.7400	0.2625
			Mar	7.7650	0.2250
			May	7.7500	0.1950

AMS 2466 Friday

5 AREA WKLY ACCUMULATED WTD AVG SLAUGHTER CATTLE PRICE

	Head Count	Avg Weight	Avg Price
Live Steer	26,483	1,485	124.32
Live Heifer	8,711	1,319	124.29
Dressed Steer	8,492	970	195.83
Dressed Heifer	2,847	843	195.66

AMS 2453 Friday

DAILY ESTIMATED BOXED BEEF CUTOUT VALUES

Choice	Select	Choice Cuts	52 loads
600-900#	600-900#	Select Cuts	19 loads
281.82	263.11	Trimming	8 loads
1.16	0.39	Grinds	12 loads

SJ LS710 Thursday

ESTD DAILY CATTLE SLAUGHTER

Friday	112,000	Sat - 67,000
Week Ago (est)	107,000	59,000
Year Ago (act)	104,000	62,000
Wk to date (est)	594,000	661,000
Last Week (est)	587,000	646,000
Last Year (act)	583,000	645,000

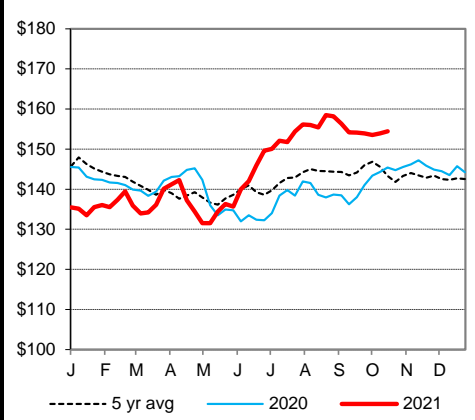
AMS 1909 Thursday

New Holland Livestock Cattle Auction

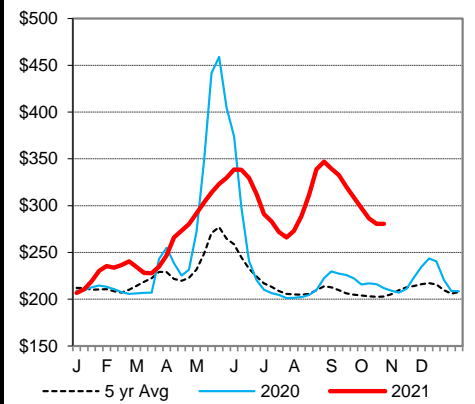
	Pct Lean	Avg Dressing
		Price
Breaking	75-80	63.00-71.50
Boning	80-85	54.00-58.00
Lean	85-90	48.00-51.00

Previous Day Estimated:	Steer and Heifer	93,000
	Cow and Bull	27,000

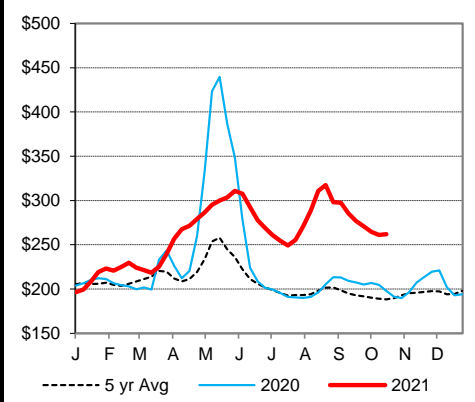
CME Feeder Cattle Index



Weekly Choice Cutout



Weekly Select Cutout



Oklahoma City 400-500 lb Steer Price

