

AUCTION SUMMARY

AMS 1857		4,500		Friday	
Crawford Livestock Market					
Crawford, NE					
Feeder Steers	300-400 lbs	206.00-214.00	Feeder Heifers	300-400 lbs	170.00-182.00
Medium &	400-500 lbs	185.00-208.00	Medium &	400-500 lbs	167.00-180.50
Large #1	500-600 lbs	174.50-192.75	Large #1	500-600 lbs	149.00-169.00
	600-700 lbs	154.00-172.00		600-700 lbs	146.50-158.75
	700-800 lbs	146.00		700-800 lbs	135.00

AMS 2021		4,129		Friday	
Ft. Pierre Livestock Auction					
Ft. Pierre, SD					
Feeder Steers	300-400 lbs	222.50-226.00	Feeder Heifers	400-500 lbs	161.00-178.00
Medium &	400-500 lbs	194.50-223.00	Medium &	500-600 lbs	150.00-166.50
Large #1	500-600 lbs	169.50-202.00	Large #1	600-700 lbs	155.00
	600-700 lbs	170.00-181.00		700-800 lbs	155.00-163.00
	700-800 lbs	166.50		800-900 lbs	150.00-159.00

AMS 1853		3,370		Saturday	
Ericson Livestock Market					
Ericson, NE					
Feeder Steers	500-600 lbs	168.00-183.50	Feeder Heifers	400-500 lbs	166.00-171.50
Medium &	600-700 lbs	166.50-170.00	Medium &	500-600 lbs	156.00-162.00
Large #1	700-800 lbs	158.00-166.50	Large #1	600-700 lbs	151.50-155.50
	800-900 lbs	158.00-163.75		700-800 lbs	147.00-151.00
	900-1000 lbs	152.25-159.50		800-900 lbs	149.00-154.00

CHICAGO MERCANTILE EXCHANGE LIVESTOCK FUTURES SETTLEMENT

Live Cattle			Feeder Cattle		
		Change			Change
Oct	125.450	(0.520)	Oct	155.750	(1.820)
Dec	130.420	(0.550)	Nov	159.350	(2.070)
Feb	135.000	(0.350)	Jan	159.550	(1.970)

CHICAGO BOARD OF TRADE GRAIN FUTURES SETTLEMENTS

Corn			Soybeans		
		Change			Change
Dec	5.3275	0.0700	Nov	12.2150	0.0375
Mar	5.4050	0.0625	Jan	12.2900	0.0275
May	5.4425	0.0550	Mar	12.3725	0.0200

KANSAS CITY BOARD OF TRADE			Wheat		
		Change			Change
Dec	7.4900	0.0525	Dec	7.4900	0.0525
Mar	7.5600	0.0525	Mar	7.5600	0.0525
May	7.5875	0.0500	May	7.5875	0.0500

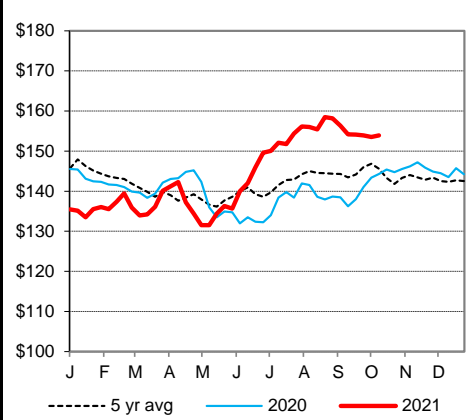
AMS 2466		Monday	
5 AREA WKLY ACCUMULATED WTD AVG SLAUGHTER CATTLE PRICE			
	Head Count	Avg Weight	Avg Price
Live Steer	36,653	1,497	123.84
Live Heifer	14,358	1,326	123.83
Dressed Steer	13,828	966	195.70
Dressed Heifer	3,637	843	195.62

AMS 2453		Monday	
DAILY ESTIMATED BOXED BEEF CUTOUT VALUES			
Choice	Select	Choice Cuts	44 loads
600-900#	600-900#	Select Cuts	31 loads
280.09	259.81	Trimming	21 loads
(0.15)	(0.81)	Grinds	14 loads

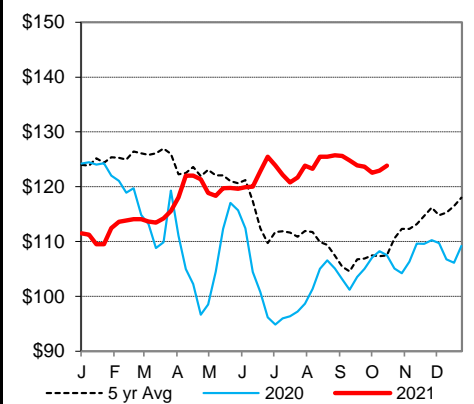
SJ LS710		Friday	
ESTD DAILY CATTLE SLAUGHTER			
Monday	120,000	Friday	120,000
Week Ago (est)	121,000	Saturday	121,000
Year Ago (act)	119,000	Monday	119,000
Wk to date (est)	120,000	Tuesday	120,000
Last Week (est)	121,000	Wednesday	121,000
Last Year (act)	119,000	Thursday	119,000
Previous Day Estimated:	Steer and Heifer	83,000	48,000
	Cow and Bull	24,000	11,000

AMS 2106			Friday		
Wyoming Weekly Cattle Auction Summary					
		Pct Lean			Avg Dressing Price
Breaking	75-80				70.00-80.50
Boning	80-85				64.00-69.00
Lean	85-90				50.00-55.00

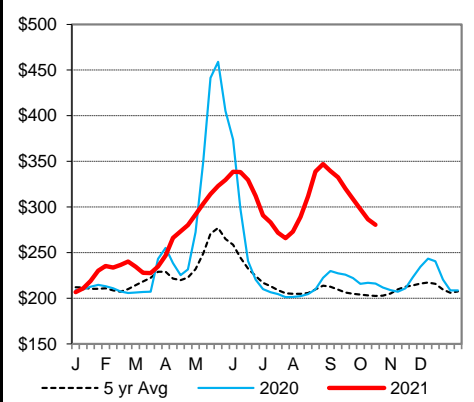
CME Feeder Cattle Index



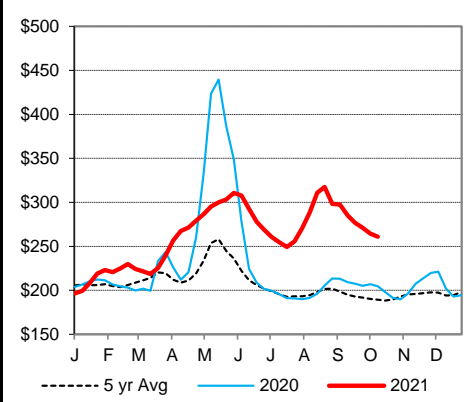
5 Area Wkly Wtd Avg Sltr Steer Price



Weekly Choice Cutout



Weekly Select Cutout



St. Joseph, Missouri
Phone: 816-676-7000
Email: stjoe.lpgmn@usda.gov
<http://www.ams.usda.gov/LSMarketNews>