

**AUCTION SUMMARY**

<b>AMS 2023</b>		8,227		Tuesday	
<b>Philip Livestock Auction</b>					
Philip, SD					
Feeder Steers	300-400 lbs	203.00-230.00	Feeder Heifers	400-500 lbs	161.00-180.00
Medium &	400-500 lbs	187.00-222.00	Medium &	500-600 lbs	147.50-165.50
Large #1	500-600 lbs	170.00-194.00	Large #1	600-700 lbs	143.00-150.00
	600-700 lbs	165.00-178.00		700-800 lbs	156.50-161.25
	700-800 lbs	167.50		800-900 lbs	146.00-154.50

<b>AMS 1854</b>		2,828		Tuesday	
<b>Imperial Auction Market</b>					
Imperial, NE					
Feeder Steers	500-600 lbs	171.00-180.00	Feeder Heifers	400-500 lbs	156.00-166.00
Medium &	600-700 lbs	165.50-173.50	Medium &	500-600 lbs	144.00-165.00
Large #1	700-800 lbs	165.50	Large #1	600-700 lbs	140.50
	800-900 lbs	153.50-165.35		700-800 lbs	152.50-155.25
	900-1000 lbs	148.25-153.85		800-900 lbs	150.00-156.00

<b>AMS 1815</b>		1,819		Tuesday	
<b>Kingsville Livestock Auction</b>					
Kingsville, MO					
Feeder Steers	400-500 lbs	185.00-212.00	Feeder Heifers	400-500 lbs	150.00-170.00
Medium &	500-600 lbs	160.00-177.00	Medium &	500-600 lbs	149.50-161.00
Large #1	600-700 lbs	160.00-177.00	Large #1	600-700 lbs	145.50-161.75
	700-800 lbs	155.35-167.00		700-800 lbs	149.85-154.25
	800-900 lbs	145.75-162.00		800-900 lbs	137.25-140.00

**CHICAGO MERCANTILE EXCHANGE LIVESTOCK FUTURES SETTLEMENT** Wednesday

Live Cattle			Feeder Cattle		
		Change			Change
Oct	124.770	(0.250)	Oct	157.650	(0.920)
Dec	129.000	(0.250)	Nov	160.970	(0.820)
Feb	133.550	(0.700)	Jan	161.450	(1.320)

**CHICAGO BOARD OF TRADE GRAIN FUTURES SETTLEMENTS** Wednesday

Corn			Soybeans		
		Change			Change
Dec	5.1225	(0.1025)	Nov	11.9525	(0.0300)
Mar	5.2200	(0.1000)	Jan	12.0600	(0.0400)
May	5.2800	(0.0950)	Mar	12.1600	(0.0450)

KANSAS CITY BOARD OF TRADE			Wheat		
		Change			Change
Dec	7.1875	(0.1525)			
Mar	7.3175	(0.1550)			
May	7.3675	(0.1475)			

**AMS 2466** Wednesday

**5 AREA WKLY ACCUMULATED WTD AVG SLAUGHTER CATTLE PRICE**

	Head Count	Avg Weight	Avg Price
Live Steer	1,417	1,348	123.63
Live Heifer	1,350	1,164	124.03
Dressed Steer	0	N/A	N/A
Dressed Heifer	0	N/A	N/A

**AMS 2453** Wednesday

**DAILY ESTIMATED BOXED BEEF CUTOUT VALUES**

<b>Choice</b>	<b>Select</b>	<b>Choice Cuts</b>	92 loads
<b>600-900#</b>	<b>600-900#</b>	<b>Select Cuts</b>	29 loads
280.02	258.70	<b>Trimming</b>	17 loads
(1.05)	(2.65)	<b>Grinds</b>	33 loads

**SJ LS710** Tuesday

**ESTD DAILY CATTLE SLAUGHTER**

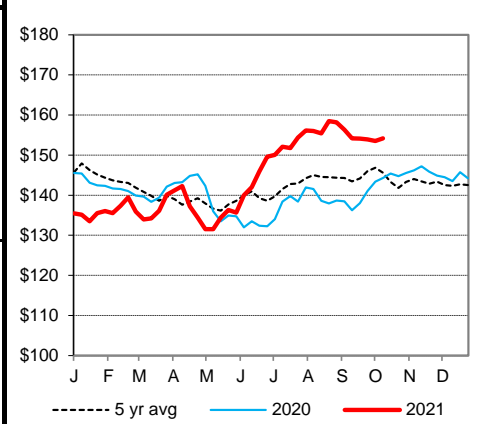
Wednesday	120,000
Week Ago (est)	121,000
Year Ago (act)	121,000
Wk to date (est)	361,000
Last Week (est)	363,000
Last Year (act)	361,000
<b>Previous Day Estimated:</b>	<b>Steer and Heifer</b> 94,000
	<b>Cow and Bull</b> 26,000

**AMS 1823** Tuesday

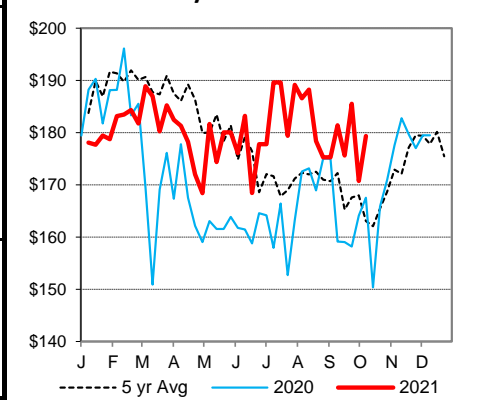
**Oklahoma National Stockyards**

	<b>Pct Lean</b>	<b>Avg Dressing Price</b>
<b>Breaking</b>	75-80	63.50-68.50
<b>Boning</b>	80-85	60.00-69.00
<b>Lean</b>	85-90	51.00-55.50

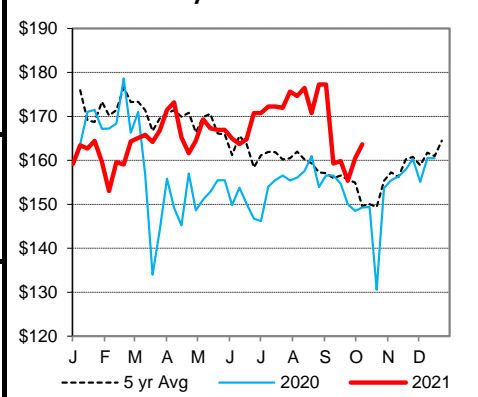
**CME Feeder Cattle Index**



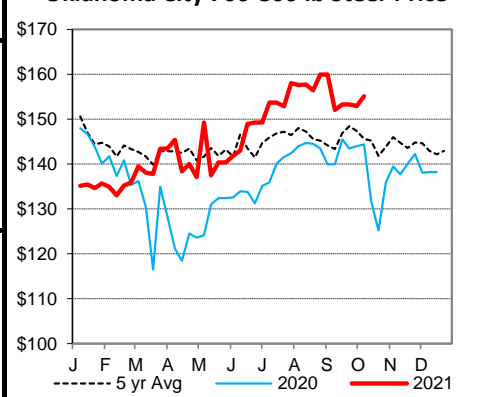
**Oklahoma City 400-500 lb Steer Price**



**Oklahoma City 500-600 lb Steer Price**



**Oklahoma City 700-800 lb Steer Price**



St. Joseph, Missouri  
Phone: 816-676-7000  
Email: stjoe.lpgmn@usda.gov  
<http://www.ams.usda.gov/LSMarketNews>