

Released August 27, 2014, by the National Agricultural Statistics Service (NASS), Agricultural Statistics Board, United States Department of Agriculture (USDA).

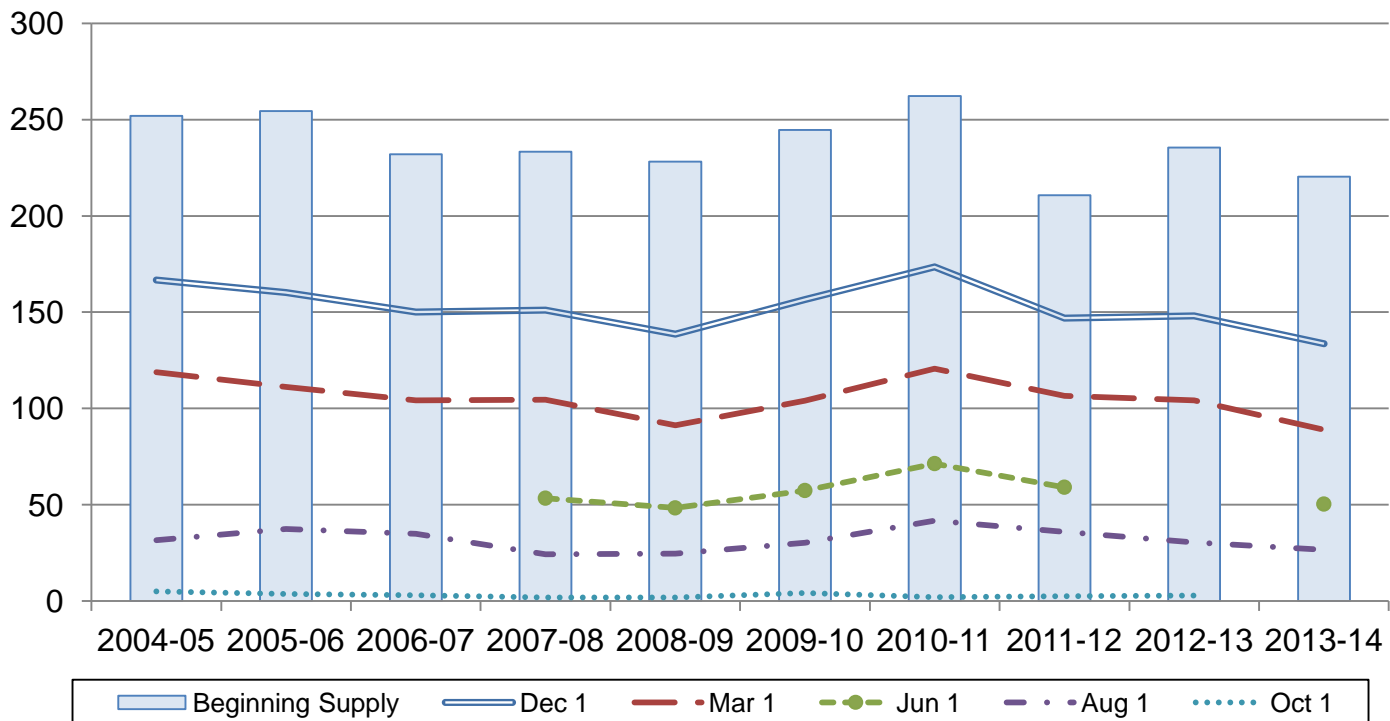
## Rough Rice Stocks Down 13 Percent from August 2013

**Rough rice stocks** in all positions on August 1, 2014 totaled 26.6 million hundredweight (cwt), down 13 percent from the total on August 1, 2013. Stocks held on farms totaled 305,000 cwt and off-farm stocks totaled 26.3 million cwt. Long grain varieties accounted for 52 percent of the total rough rice, medium grain accounted for 44 percent, and short grain varieties accounted for 4 percent.

**Milled rice stocks** in all positions totaled 3.71 million cwt, down 10 percent from a year ago. Milled rice stocks were comprised of 2.08 million cwt of whole kernel rice and 1.64 million cwt of second heads, screenings, and brewers rice.

## Rough Rice Stocks – United States

Million cwt



## Rice Stocks by Position and Month in Domestic Units – United States: 2013 and 2014

[Blank data cells indicate estimation period has not yet begun]

Date	2013			2014		
	On farms	Off farms <sup>1</sup>	Total all positions	On farms	Off farms <sup>1</sup>	Total all positions
	(1,000 cwt)	(1,000 cwt)	(1,000 cwt)	(1,000 cwt)	(1,000 cwt)	(1,000 cwt)
<b>Rough rice</b>						
March 1 .....	18,430	85,839	104,269	14,995	73,959	88,954
June 1 .....	(NA)	(NA)	(NA)	4,830	45,521	50,351
August 1 .....	640	29,880	30,520	305	26,299	26,604
October 1 <sup>2</sup> .....	20	2,906	2,926			
December 1 .....	36,935	96,636	133,571			
<b>Milled rice</b>						
March 1 .....	(X)	6,665	6,665	(X)	5,844	5,844
June 1 .....	(X)	(NA)	(NA)	(X)	5,870	5,870
August 1 .....	(X)	4,132	4,132	(X)	3,711	3,711
October 1 <sup>2</sup> .....	(X)	1,210	1,210	(X)		
December 1 .....	(X)	6,605	6,605	(X)		

(NA) Not available.

(X) Not applicable.

<sup>1</sup> Includes stocks at mills, elevators, warehouses, ports, and in transit.

<sup>2</sup> California only.

## Rice Stocks by Position and Month in Metric Units – United States: 2013 and 2014

[Data may not add to totals due to rounding. Blank data cells indicate estimation period has not yet begun]

Date	2013			2014		
	On farms	Off farms <sup>1</sup>	Total all positions	On farms	Off farms <sup>1</sup>	Total all positions
	(metric tons)	(metric tons)	(metric tons)	(metric tons)	(metric tons)	(metric tons)
<b>Rough rice</b>						
March 1 .....	835,970	3,893,590	4,729,560	680,160	3,354,720	4,034,890
June 1 .....	(NA)	(NA)	(NA)	219,090	2,064,800	2,283,880
August 1 .....	29,030	1,355,330	1,384,360	13,830	1,192,900	1,206,740
October 1 <sup>2</sup> .....	910	131,810	132,720			
December 1 .....	1,675,340	4,383,340	6,058,680			
<b>Milled rice</b>						
March 1 .....	(X)	302,320	302,320	(X)	265,080	265,080
June 1 .....	(X)	(NA)	(NA)	(X)	266,260	266,260
August 1 .....	(X)	187,420	187,420	(X)	168,330	168,330
October 1 <sup>2</sup> .....	(X)	54,880	54,880	(X)		
December 1 .....	(X)	299,600	299,600	(X)		

(NA) Not available.

(X) Not applicable.

<sup>1</sup> Includes stocks at mills, elevators, warehouses, ports, and in transit.

<sup>2</sup> California only.

# Rice Stocks by Position – States and United States: August 1, 2013 and 2014

State	2013			2014		
	On farms	Off farms <sup>1</sup>	Total all positions	On farms	Off farms <sup>1</sup>	Total all positions
	(1,000 cwt)	(1,000 cwt)	(1,000 cwt)	(1,000 cwt)	(1,000 cwt)	(1,000 cwt)
<b>Rough rice</b>						
Arkansas .....	240	15,639	15,879	80	10,397	10,477
California .....	120	8,062	8,182	100	10,897	10,997
Louisiana .....	(D)	(D)	2,390	60	1,120	1,180
Mississippi .....	(D)	(D)	640	(D)	(D)	683
Missouri .....	(D)	(D)	1,039	(D)	(D)	806
Texas .....	(D)	(D)	2,390	(D)	(D)	2,461
Unallocated <sup>2</sup> .....	280	6,179	-	65	3,885	-
United States .....	640	29,880	30,520	305	26,299	26,604
<b>Milled rice</b>						
Arkansas .....	(X)	(D)	(D)	(X)	1,379	1,379
California .....	(X)	1,328	1,328	(X)	1,420	1,420
Louisiana .....	(X)	337	337	(X)	(D)	(D)
Mississippi .....	(X)	(D)	(D)	(X)	(D)	(D)
Missouri .....	(X)	(D)	(D)	(X)	(D)	(D)
Texas .....	(X)	523	523	(X)	505	505
Unallocated <sup>2</sup> .....	(X)	1,944	1,944	(X)	407	407
United States .....	(X)	4,132	4,132	(X)	3,711	3,711

- Represents zero.

(D) Withheld to avoid disclosing data for individual operations.

(X) Not applicable.

<sup>1</sup> Includes stocks at mills, elevators, warehouses, ports, and in transit.

<sup>2</sup> Unallocated includes State data withheld to avoid disclosure of individual operations.

**Rough Rice Stocks by Length of Grain in All Positions – States and United States:  
August 1, 2013 and 2014**

State	Long		Medium		Short		Total	
	2013	2014	2013	2014	2013	2014	2013	2014
	(1,000 cwt)	(1,000 cwt)	(1,000 cwt)	(1,000 cwt)	(1,000 cwt)	(1,000 cwt)	(1,000 cwt)	(1,000 cwt)
California .....	245	(D)	6,915	9,833	1,022	(D)	8,182	10,997
Other States <sup>1</sup> .....	19,194	(D)	3,142	1,798	2	(D)	22,338	15,607
United States .....	19,439	14,010	10,057	11,631	1,024	963	30,520	26,604

(D) Withheld to avoid disclosing data for individual operations.

<sup>1</sup> Other States include Arkansas, Louisiana, Mississippi, Missouri, and Texas.

**Milled Rice Stocks by Length of Grain in All Positions – States and United States:  
August 1, 2013 and 2014**

State	Whole kernels (head rice)							
	Long		Medium		Short		Total	
	2013	2014	2013	2014	2013	2014	2013	2014
	(1,000 cwt)	(1,000 cwt)	(1,000 cwt)	(1,000 cwt)	(1,000 cwt)	(1,000 cwt)	(1,000 cwt)	(1,000 cwt)
California .....	(D)	(D)	(D)	(D)	61	(D)	597	436
Other States <sup>1</sup> .....	(D)	(D)	(D)	(D)	-	(D)	1,894	1,639
United States .....	1,704	1,556	726	472	61	47	2,491	2,075

State	Broken kernels							
	Second heads		Screenings <sup>2</sup>		Brewers		Total	
	2013	2014	2013	2014	2013	2014	2013	2014
	(1,000 cwt)	(1,000 cwt)	(1,000 cwt)	(1,000 cwt)	(1,000 cwt)	(1,000 cwt)	(1,000 cwt)	(1,000 cwt)
California .....	566	(D)	-	(D)	165	(D)	731	984
Other States <sup>1</sup> .....	538	(D)	153	(D)	219	(D)	910	652
United States .....	1,104	797	153	92	384	747	1,641	1,636

- Represents zero.

(D) Withheld to avoid disclosing data for individual operations.

<sup>1</sup> Other States include Arkansas, Louisiana, Mississippi, Missouri, and Texas.

<sup>2</sup> Screenings included with second heads in California.

## Rice Stocks by Position – States and United States: June 1, 2013 and 2014

State	2013			2014		
	On farms	Off farms <sup>1</sup>	Total all positions	On farms	Off farms <sup>1</sup>	Total all positions
	(1,000 cwt)	(1,000 cwt)	(1,000 cwt)	(1,000 cwt)	(1,000 cwt)	(1,000 cwt)
<b>Rough rice</b>						
Arkansas .....	(NA)	(NA)	(NA)	2,850	21,115	23,965
California .....	(NA)	(NA)	(NA)	690	15,309	15,999
Louisiana .....	(NA)	(NA)	(NA)	550	2,891	3,441
Mississippi .....	(NA)	(NA)	(NA)	200	1,034	1,234
Missouri .....	(NA)	(NA)	(NA)	200	1,613	1,813
Texas .....	(NA)	(NA)	(NA)	340	3,559	3,899
Unallocated <sup>2</sup> .....	(NA)	(NA)	(NA)	-	-	-
United States .....	(NA)	(NA)	(NA)	4,830	45,521	50,351
<b>Milled rice</b>						
Arkansas .....	(X)	(NA)	(NA)	(X)	1,481	1,481
California .....	(X)	(NA)	(NA)	(X)	2,666	2,666
Louisiana .....	(X)	(NA)	(NA)	(X)	547	547
Mississippi .....	(X)	(NA)	(NA)	(X)	234	234
Missouri .....	(X)	(NA)	(NA)	(X)	412	412
Texas .....	(X)	(NA)	(NA)	(X)	530	530
Unallocated <sup>2</sup> .....	(X)	(NA)	(NA)	(X)	-	-
United States .....	(X)	(NA)	(NA)	(X)	5,870	5,870

- Represents zero.

(NA) Not available.

(X) Not applicable.

<sup>1</sup> Includes stocks at mills, elevators, warehouses, ports, and in transit.

<sup>2</sup> Unallocated includes State data withheld to avoid disclosure of individual operations.

**Rough Rice Stocks by Length of Grain in All Positions – States and United States:  
June 1, 2013 and 2014**

State	Long		Medium		Short		Total	
	2013	2014	2013	2014	2013	2014	2013	2014
	(1,000 cwt)	(1,000 cwt)	(1,000 cwt)	(1,000 cwt)	(1,000 cwt)	(1,000 cwt)	(1,000 cwt)	(1,000 cwt)
California .....	(NA)	(D)	(NA)	14,309	(NA)	(D)	(NA)	15,999
Other States <sup>1</sup> .....	(NA)	(D)	(NA)	2,985	(NA)	(D)	(NA)	34,352
United States .....	(NA)	31,622	(NA)	17,294	(NA)	1,435	(NA)	50,351

(D) Withheld to avoid disclosing data for individual operations.

(NA) Not available.

<sup>1</sup> Other States include Arkansas, Louisiana, Mississippi, Missouri, and Texas.

**Milled Rice Stocks by Length of Grain in All Positions – States and United States:  
June 1, 2013 and 2014**

State	Whole kernels (head rice)							
	Long		Medium		Short		Total	
	2013	2014	2013	2014	2013	2014	2013	2014
	(1,000 cwt)	(1,000 cwt)	(1,000 cwt)	(1,000 cwt)	(1,000 cwt)	(1,000 cwt)	(1,000 cwt)	(1,000 cwt)
California .....	(NA)	(D)	(NA)	1,462	(NA)	(D)	(NA)	1,534
Other States <sup>1</sup> .....	(NA)	(D)	(NA)	139	(NA)	(D)	(NA)	2,516
United States .....	(NA)	(D)	(NA)	1,601	(NA)	(D)	(NA)	4,050

State	Broken kernels							
	Second heads		Screenings <sup>2</sup>		Brewers		Total	
	2013	2014	2013	2014	2013	2014	2013	2014
	(1,000 cwt)	(1,000 cwt)	(1,000 cwt)	(1,000 cwt)	(1,000 cwt)	(1,000 cwt)	(1,000 cwt)	(1,000 cwt)
California .....	(NA)	(D)	(NA)	(D)	(NA)	(D)	(NA)	1,132
Other States <sup>1</sup> .....	(NA)	(D)	(NA)	(D)	(NA)	(D)	(NA)	688
United States .....	(NA)	1,159	(NA)	72	(NA)	589	(NA)	1,820

(D) Withheld to avoid disclosing data for individual operations.

(NA) Not available.

<sup>1</sup> Other States include Arkansas, Louisiana, Mississippi, Missouri, and Texas.

<sup>2</sup> Screenings included with second heads in California.

## Statistical Methodology

**Survey Procedures:** The rice stocks estimates in this report are based on surveys conducted during the first two weeks of August. Separate surveys were conducted to obtain the on-farm and off-farm estimates. The on-farm stocks survey is a probability survey based on a sampling procedure that ensures all operations storing rice in the United States have a chance to be selected. These producers were asked to provide the total quantities of grain stored on their operations as of August 1, 2014 regardless of ownership. Off-farm stocks are a census of all known rice storage facilities. An effort is made to obtain reports from all off-farm facilities. Estimates are made for missing facilities to assure complete coverage.

**Estimating Procedures:** On-farm and off-farm survey data are reviewed at the State and national levels for reasonableness, consistency with historical estimates, and current crop size. After estimates are made for on-farm and off-farm rice stocks, the total of these two are combined and evaluated using the balance sheet approach. This method utilizes other sources of data to check the reasonableness of the stocks estimates. Estimates of production, exports, and millings are reviewed to make sure beginning stocks, production, utilization, and ending stocks are within reasonable balance and present the best possible estimate of stocks.

**Revision Policy:** On-farm and off-farm stocks are subject to revision in the quarter following initial publication and again in the following December 1 *Rice Stocks* report published in January each year. Revisions can be made when late reports are received, errors are detected in reporting and calculating, and when production estimates are revised. Estimates will also be reviewed after data from the 5-year Census of Agriculture are available. No revisions to these years will be made after that date.

**Reliability:** Reliability of the on-farm and off-farm stocks must be treated separately because the survey designs for the two surveys are drastically different. The on-farm stocks estimates are subject to sampling variability because all operations holding on-farm stocks are not included in the sample.

Survey indications are also subject to non-sampling errors such as omission, duplication, imputation for missing data, and mistakes in reporting, recording, and processing the data. Off-farm, as well as on-farm stocks, are subject to these types of errors. These errors cannot be measured directly, but they are minimized through rigid quality controls in the data collection process and a careful review of all reported data for consistency and reasonableness.

## Information Contacts

Listed below are the commodity statisticians in the Crops Branch of the National Agricultural Statistics Service to contact for additional information. E-mail inquiries may be sent to [nass@nass.usda.gov](mailto:nass@nass.usda.gov)

Lance Honig, Chief, Crops Branch.....	(202) 720-2127
Anthony Prillaman, Head, Field Crops Section .....	(202) 720-2127
Brent Chittenden – Oats, Rye, Wheat .....	(202) 720-8068
Angie Considine – Cotton, Cotton Ginnings, Sorghum.....	(202) 720-5944
Tony Dahlman – Crop Weather, Barley .....	(202) 720-7621
Chris Hawthorn – Corn, Flaxseed, Proso Millet .....	(202) 720-9526
James Johanson – County Estimates, Hay .....	(202) 690-8533
Anthony Prillaman – Peanuts, Rice .....	(202) 720-2127
Travis Thorson – Soybeans, Sunflower, Other Oilseeds .....	(202) 720-7369

## Access to NASS Reports

For your convenience, you may access NASS reports and products the following ways:

- All reports are available electronically, at no cost, on the NASS web site: <http://www.nass.usda.gov>
- Both national and state specific reports are available via a free e-mail subscription. To set-up this free subscription, visit <http://www.nass.usda.gov> and in the “Follow NASS” box under “Receive reports by Email,” click on “National” or “State” to select the reports you would like to receive.

For more information on NASS surveys and reports, call the NASS Agricultural Statistics Hotline at (800) 727-9540, 7:30 a.m. to 4:00 p.m. ET, or e-mail: [nass@nass.usda.gov](mailto:nass@nass.usda.gov).

The U.S. Department of Agriculture (USDA) prohibits discrimination against its customers, employees, and applicants for employment on the basis of race, color, national origin, age, disability, sex, gender identity, religion, reprisal, and where applicable, political beliefs, marital status, familial or parental status, sexual orientation, or all or part of an individual's income is derived from any public assistance program, or protected genetic information in employment or in any program or activity conducted or funded by the Department. (Not all prohibited bases will apply to all programs and/or employment activities.)

If you wish to file a Civil Rights program complaint of discrimination, complete the [USDA Program Discrimination Complaint Form](#) (PDF), found online at [http://www.ascr.usda.gov/complaint\\_filing\\_cust.html](http://www.ascr.usda.gov/complaint_filing_cust.html), or at any USDA office, or call (866) 632-9992 to request the form. You may also write a letter containing all of the information requested in the form. Send your completed complaint form or letter to us by mail at U.S. Department of Agriculture, Director, Office of Adjudication, 1400 Independence Avenue, S.W., Washington, D.C. 20250-9410, by fax (202) 690-7442 or email at [program.intake@usda.gov](mailto:program.intake@usda.gov).



**USDA Data Users' Meeting**  
**Monday, October 20, 2014**

**Crowne Plaza Chicago-Metro**  
**Chicago, Illinois 60661**  
**312-829-5000**

The USDA's National Agricultural Statistics Service will be organizing an open forum for data users. The purpose will be to provide updates on pending changes in the various statistical and information programs and seek comments and input from data users. Other USDA agencies to be represented will include the Agricultural Marketing Service, the Economic Research Service, the Foreign Agricultural Service, and the World Agricultural Outlook Board. The Foreign Trade Division from the Census Bureau will also be included in the meeting.

For registration details or additional information for the Data Users' Meeting, see the NASS homepage at <http://www.nass.usda.gov/meeting/> or contact Rose Armstrong (NASS) at (202) 720-3896 or at [rose.armstrong@nass.usda.gov](mailto:rose.armstrong@nass.usda.gov).

This Data Users' Meeting precedes the Industry Outlook Conference that will be held at the same location on Tuesday, October 21, 2014. The outlook meeting brings together analysts from various commodity sectors to discuss the outlook situation. For registration details or additional information for the Industry Outlook Conference, see the conference webpage on the LMIC website: <http://www.lmic.info/IOC/>. Or call the Livestock Marketing Information Center (LMIC) at (303) 236-0460.