

Released June 30, 2015, by the National Agricultural Statistics Service (NASS), Agricultural Statistics Board, United States Department of Agriculture (USDA).

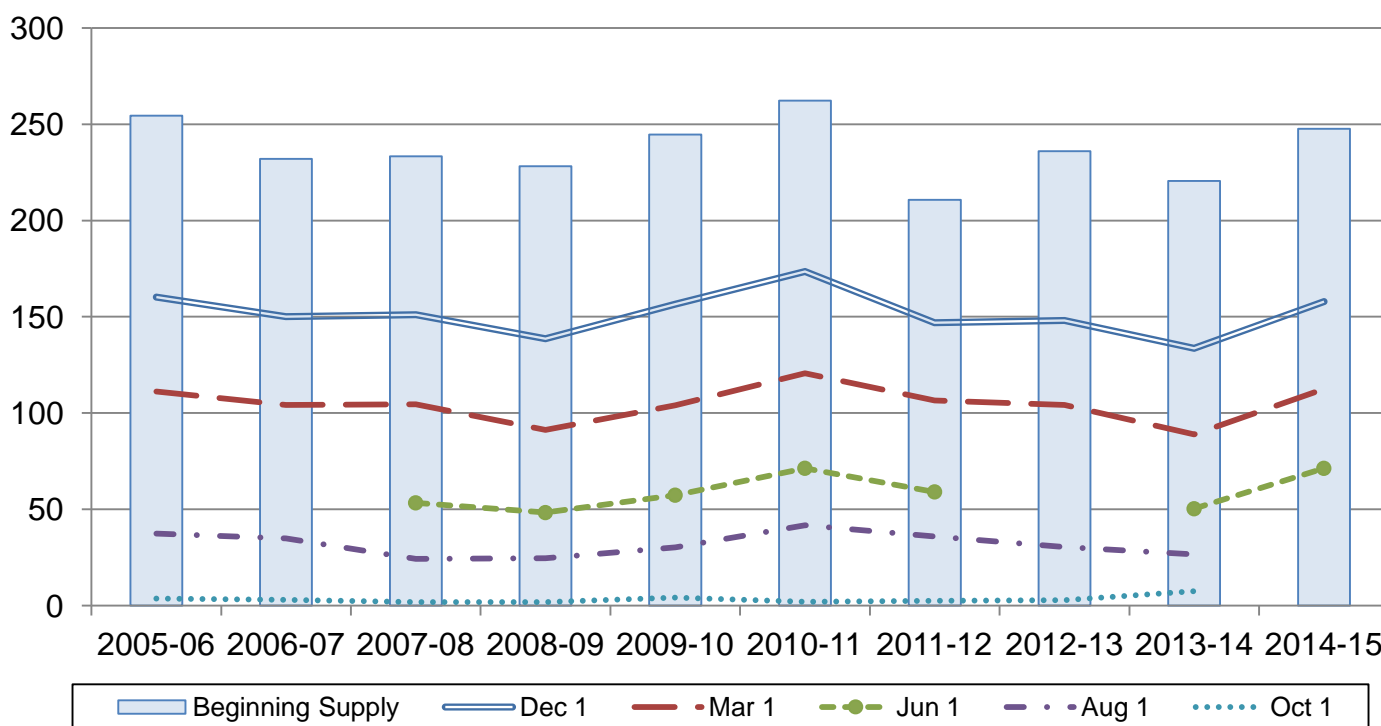
Rough Rice Stocks Up 42 Percent from June 2014

Rough rice stocks in all positions on June 1, 2015 totaled 71.3 million hundredweight (cwt), up 42 percent from the total on June 1, 2014. Stocks held on farms totaled 10.2 million cwt and off-farm stocks totaled 61.1 million cwt. Long grain varieties accounted for 59 percent of the total rough rice, medium grain accounted for 39 percent, and short grain varieties accounted for 2 percent.

Milled rice stocks in all positions totaled 6.77 million cwt, up 15 percent from a year ago. Milled rice stocks were comprised of 4.24 million cwt of whole kernel rice and 2.53 million cwt of second heads, screenings, and brewers rice.

Rough Rice Stocks – United States

Million cwt



Rice Stocks by Position and Month in Domestic Units – United States: 2014 and 2015

[Blank data cells indicate estimation period has not yet begun]

Date	2014			2015		
	On farms	Off farms ¹	Total all positions	On farms	Off farms ¹	Total all positions
	(1,000 cwt)	(1,000 cwt)	(1,000 cwt)	(1,000 cwt)	(1,000 cwt)	(1,000 cwt)
Rough rice						
March 1	14,995	73,959	88,954	25,810	86,658	112,468
June 1	4,830	45,521	50,351	10,227	61,113	71,340
August 1	305	26,299	26,604			
October 1 ²	15	7,523	7,538			
December 1	47,865	110,061	157,926			
Milled rice						
March 1	(X)	5,844	5,844	(X)	5,869	5,869
June 1	(X)	5,870	5,870	(X)	6,772	6,772
August 1	(X)	3,711	3,711			
October 1 ²	(X)	1,113	1,113			
December 1	(X)	5,646	5,646			

(X) Not applicable.

¹ Includes stocks at mills, elevators, warehouses, ports, and in transit.

² California only.

Rice Stocks by Position and Month in Metric Units – United States: 2014 and 2015

[Data may not add to totals due to rounding. Blank data cells indicate estimation period has not yet begun]

Date	2014			2015		
	On farms	Off farms ¹	Total all positions	On farms	Off farms ¹	Total all positions
	(metric tons)	(metric tons)	(metric tons)	(metric tons)	(metric tons)	(metric tons)
Rough rice						
March 1	680,160	3,354,720	4,034,890	1,170,720	3,930,740	5,101,460
June 1	219,090	2,064,800	2,283,880	463,890	2,772,040	3,235,930
August 1	13,830	1,192,900	1,206,740			
October 1 ²	680	341,240	341,920			
December 1	2,171,120	4,992,280	7,163,400			
Milled rice						
March 1	(X)	265,080	265,080	(X)	266,210	266,210
June 1	(X)	266,260	266,260	(X)	307,170	307,170
August 1	(X)	168,330	168,330			
October 1 ²	(X)	50,480	50,480			
December 1	(X)	256,100	256,100			

(X) Not applicable.

¹ Includes stocks at mills, elevators, warehouses, ports, and in transit.

² California only.

Rice Stocks by Position – States and United States: June 1, 2014 and 2015

State	2014			2015		
	On farms	Off farms ¹	Total all positions	On farms	Off farms ¹	Total all positions
	(1,000 cwt)	(1,000 cwt)	(1,000 cwt)	(1,000 cwt)	(1,000 cwt)	(1,000 cwt)
Rough rice						
Arkansas	2,850	21,115	23,965	6,400	32,387	38,787
California	690	15,309	15,999	1,077	20,617	21,694
Louisiana	550	2,891	3,441	1,400	2,814	4,214
Mississippi	200	1,034	1,234	(D)	(D)	1,434
Missouri	200	1,613	1,813	(D)	(D)	2,004
Texas	340	3,559	3,899	480	2,727	3,207
Unallocated ²	-	-	-	870	2,568	-
United States	4,830	45,521	50,351	10,227	61,113	71,340
Milled rice						
Arkansas	(X)	1,481	1,481	(X)	2,128	2,128
California	(X)	2,666	2,666	(X)	3,175	3,175
Louisiana	(X)	547	547	(X)	(D)	(D)
Mississippi	(X)	234	234	(X)	(D)	(D)
Missouri	(X)	412	412	(X)	(D)	(D)
Texas	(X)	530	530	(X)	660	660
Unallocated ²	(X)	-	-	(X)	809	809
United States	(X)	5,870	5,870	(X)	6,772	6,772

- Represents zero.

(D) Withheld to avoid disclosing data for individual operations.

(X) Not applicable.

¹ Includes stocks at mills, elevators, warehouses, ports, and in transit.

² Unallocated includes State data withheld to avoid disclosure of individual operations.

**Rough Rice Stocks by Length of Grain in All Positions – States and United States:
June 1, 2014 and 2015**

State	Long		Medium		Short		Total	
	2014	2015	2014	2015	2014	2015	2014	2015
	(1,000 cwt)	(1,000 cwt)	(1,000 cwt)	(1,000 cwt)	(1,000 cwt)	(1,000 cwt)	(1,000 cwt)	(1,000 cwt)
California	(D)	(D)	14,309	20,431	(D)	(D)	15,999	21,694
Other States ¹	(D)	(D)	2,985	7,557	(D)	(D)	34,352	49,646
United States	31,622	42,295	17,294	27,988	1,435	1,057	50,351	71,340

(D) Withheld to avoid disclosing data for individual operations.

¹ Other States include Arkansas, Louisiana, Mississippi, Missouri, and Texas.

**Milled Rice Stocks by Length of Grain in All Positions – States and United States:
June 1, 2014 and 2015**

State	Whole kernels (head rice)							
	Long		Medium		Short		Total	
	2014	2015	2014	2015	2014	2015	2014	2015
	(1,000 cwt)	(1,000 cwt)	(1,000 cwt)	(1,000 cwt)	(1,000 cwt)	(1,000 cwt)	(1,000 cwt)	(1,000 cwt)
California	(D)	(D)	1,462	1,526	(D)	(D)	1,534	1,583
Other States ¹	(D)	(D)	139	136	(D)	(D)	2,516	2,656
United States	(D)	2,523	1,601	1,662	(D)	54	4,050	4,239

State	Broken kernels							
	Second heads		Screenings ²		Brewers		Total	
	2014	2015	2014	2015	2014	2015	2014	2015
	(1,000 cwt)	(1,000 cwt)	(1,000 cwt)	(1,000 cwt)	(1,000 cwt)	(1,000 cwt)	(1,000 cwt)	(1,000 cwt)
California	(D)	(D)	(D)	(D)	(D)	(D)	1,132	1,592
Other States ¹	(D)	(D)	(D)	(D)	(D)	(D)	688	941
United States	1,159	1,227	72	153	589	1,153	1,820	2,533

(D) Withheld to avoid disclosing data for individual operations.

¹ Other States include Arkansas, Louisiana, Mississippi, Missouri, and Texas.

² Screenings included with second heads in California.

Rice Stocks by Position – States and United States: March 1, 2014 and 2015

State	2014			2015		
	On farms	Off farms ¹	Total all positions	On farms	Off farms ¹	Total all positions
	(1,000 Cwt)	(1,000 Cwt)	(1,000 Cwt)	(1,000 Cwt)	(1,000 Cwt)	(1,000 Cwt)
Rough rice						
Arkansas	9,100	33,006	42,106	12,900	41,638	54,538
California	1,815	26,002	27,817	2,210	29,605	31,815
Louisiana	1,600	5,642	7,242	5,700	6,256	11,956
Mississippi	(D)	(D)	2,242	2,200	1,431	3,631
Missouri	(D)	(D)	3,338	(D)	(D)	4,548
Texas	820	5,389	6,209	(D)	(D)	5,980
Unallocated ²	1,660	3,920	-	2,800	7,728	-
United States	14,995	73,959	88,954	25,810	86,658	112,468
Milled rice						
Arkansas	(X)	1,430	1,430	(X)	1,621	1,621
California	(X)	2,716	2,716	(X)	2,928	2,928
Louisiana	(X)	(D)	(D)	(X)	(D)	(D)
Mississippi	(X)	(D)	(D)	(X)	(D)	(D)
Missouri	(X)	(D)	(D)	(X)	(D)	(D)
Texas	(X)	702	702	(X)	818	818
Unallocated ²	(X)	996	996	(X)	502	502
United States	(X)	5,844	5,844	(X)	5,869	5,869

- Represents zero.

(D) Withheld to avoid disclosing data for individual operations.

(X) Not applicable.

¹ Includes stocks at mills, elevators, warehouses, ports, and in transit.

² Unallocated includes State data withheld to avoid disclosure of individual operations.

**Rough Rice Stocks By Length of Grain in All Positions – States and United States:
March 1, 2014 and 2015**

State	Long		Medium		Short		Total	
	2014	2015	2014	2015	2014	2015	2014	2015
	(1,000 cwt)	(1,000 cwt)	(1,000 cwt)	(1,000 cwt)	(1,000 cwt)	(1,000 cwt)	(1,000 cwt)	(1,000 cwt)
California	(D)	(D)	25,113	29,788	(D)	(D)	27,817	31,815
Other States ¹	(D)	(D)	5,368	9,717	(D)	(D)	61,137	80,653
United States	56,125	71,243	30,481	39,505	2,348	1,720	88,954	112,468

(D) Withheld to avoid disclosing data for individual operations.

¹ Other States include Arkansas, Louisiana, Mississippi, Missouri, and Texas.

**Milled Rice Stocks by Length of Grain in All Positions – States and United States:
March 1, 2014 and 2015**

State	Whole kernels (head rice)							
	Long		Medium		Short		Total	
	2014	2015	2014	2015	2014	2015	2014	2015
	(1,000 cwt)	(1,000 cwt)	(1,000 cwt)	(1,000 cwt)	(1,000 cwt)	(1,000 cwt)	(1,000 cwt)	(1,000 cwt)
California	(D)	(D)	1,490	1,002	(D)	(D)	1,541	1,066
Other States ¹	(D)	(D)	94	137	(D)	(D)	2,470	2,084
United States	2,379	1,952	1,584	1,139	48	59	4,011	3,150
State	Broken kernels							
	Second heads		Screenings ²		Brewers		Total	
	2014	2015	2014	2015	2014	2015	2014	2015
	(1,000 cwt)	(1,000 cwt)	(1,000 cwt)	(1,000 cwt)	(1,000 cwt)	(1,000 cwt)	(1,000 cwt)	(1,000 cwt)
California	(D)	(D)	-	-	(D)	(D)	1,175	1,862
Other States ¹	(D)	(D)	118	115	(D)	(D)	658	857
United States	1,064	1,663	118	115	651	941	1,833	2,719

- Represents zero.

(D) Withheld to avoid disclosing data for individual operations.

¹ Other States include Arkansas, Louisiana, Mississippi, Missouri, and Texas.

² Screenings included with second heads in California.

Statistical Methodology

Survey Procedures: The rice stocks estimates in this report are based on surveys conducted during the first two weeks of June. Separate surveys were conducted to obtain the on-farm and off-farm estimates. The on-farm stocks survey is a probability survey based on a sampling procedure that ensures all operations storing rice in the United States have a chance to be selected. These producers were asked to provide the total quantities of grain stored on their operations as of June 1, 2015 regardless of ownership. Off-farm stocks are a census of all known rice storage facilities. An effort is made to obtain reports from all off-farm facilities. Estimates are made for missing facilities to ensure complete coverage.

Estimating Procedures: On-farm and off-farm survey data are reviewed at the State and national levels for reasonableness, consistency with historical estimates, and current crop size. After estimates are made for on-farm and off-farm rice stocks, the total of these two are combined and evaluated using the balance sheet approach. This method utilizes other sources of data to check the reasonableness of the stocks estimates. Estimates of production, exports, and millings are reviewed to make sure beginning stocks, production, utilization, and ending stocks are within reasonable balance and present the best possible estimate of stocks.

Revision Policy: On-farm and off-farm stocks are subject to revision in the quarter following initial publication and again in the following December 1 *Rice Stocks* report published in January each year. Revisions can be made when late reports are received, errors are detected in reporting and calculating, and when production estimates are revised. Estimates will also be reviewed after data from the 5-year Census of Agriculture are available. No revisions to these years will be made after that date.

Reliability: Reliability of the on-farm and off-farm stocks must be treated separately because the survey designs for the two surveys are drastically different. The on-farm stocks estimates are subject to sampling variability because all operations holding on-farm stocks are not included in the sample.

Survey indications are also subject to non-sampling errors such as omission, duplication, imputation for missing data, and mistakes in reporting, recording, and processing the data. Off-farm, as well as on-farm stocks, are subject to these types of errors. These errors cannot be measured directly, but they are minimized through rigid quality controls in the data collection process and a careful review of all reported data for consistency and reasonableness.

Information Contacts

Listed below are the commodity statisticians in the Crops Branch of the National Agricultural Statistics Service to contact for additional information. E-mail inquiries may be sent to nass@nass.usda.gov

Lance Honig, Chief, Crops Branch.....	(202) 720-2127
Anthony Prillaman, Head, Field Crops Section	(202) 720-2127
Angie Considine – Cotton, Cotton Ginnings, Sorghum.....	(202) 720-5944
Tony Dahlman – Crop Weather, Barley, Soybeans	(202) 720-7621
Chris Hawthorn – Corn, Flaxseed, Proso Millet	(202) 720-9526
James Johanson – County Estimates, Hay	(202) 690-8533
Jean Porter – Oats, Rye, Wheat.....	(202) 720-8068
Bianca Pruneda – Peanuts, Rice.....	(202) 720-7688
Travis Thorson – Sunflower, Other Oilseeds.....	(202) 720-7369

Access to NASS Reports

For your convenience, you may access NASS reports and products the following ways:

- All reports are available electronically, at no cost, on the NASS web site: <http://www.nass.usda.gov>
- Both national and state specific reports are available via a free e-mail subscription. To set-up this free subscription, visit <http://www.nass.usda.gov> and in the “Follow NASS” box under “Receive reports by Email,” click on “National” or “State” to select the reports you would like to receive.

For more information on NASS surveys and reports, call the NASS Agricultural Statistics Hotline at (800) 727-9540, 7:30 a.m. to 4:00 p.m. ET, or e-mail: nass@nass.usda.gov.

The U.S. Department of Agriculture (USDA) prohibits discrimination against its customers, employees, and applicants for employment on the basis of race, color, national origin, age, disability, sex, gender identity, religion, reprisal, and where applicable, political beliefs, marital status, familial or parental status, sexual orientation, or all or part of an individual's income is derived from any public assistance program, or protected genetic information in employment or in any program or activity conducted or funded by the Department. (Not all prohibited bases will apply to all programs and/or employment activities.)

If you wish to file a Civil Rights program complaint of discrimination, complete the [USDA Program Discrimination Complaint Form](#) (PDF), found online at http://www.ascr.usda.gov/complaint_filing_cust.html, or at any USDA office, or call (866) 632-9992 to request the form. You may also write a letter containing all of the information requested in the form. Send your completed complaint form or letter to us by mail at U.S. Department of Agriculture, Director, Office of Adjudication, 1400 Independence Avenue, S.W., Washington, D.C. 20250-9410, by fax (202) 690-7442 or email at program.intake@usda.gov.