

Released March 31, 2011, by the National Agricultural Statistics Service (NASS), Agricultural Statistics Board, United States Department of Agriculture (USDA).

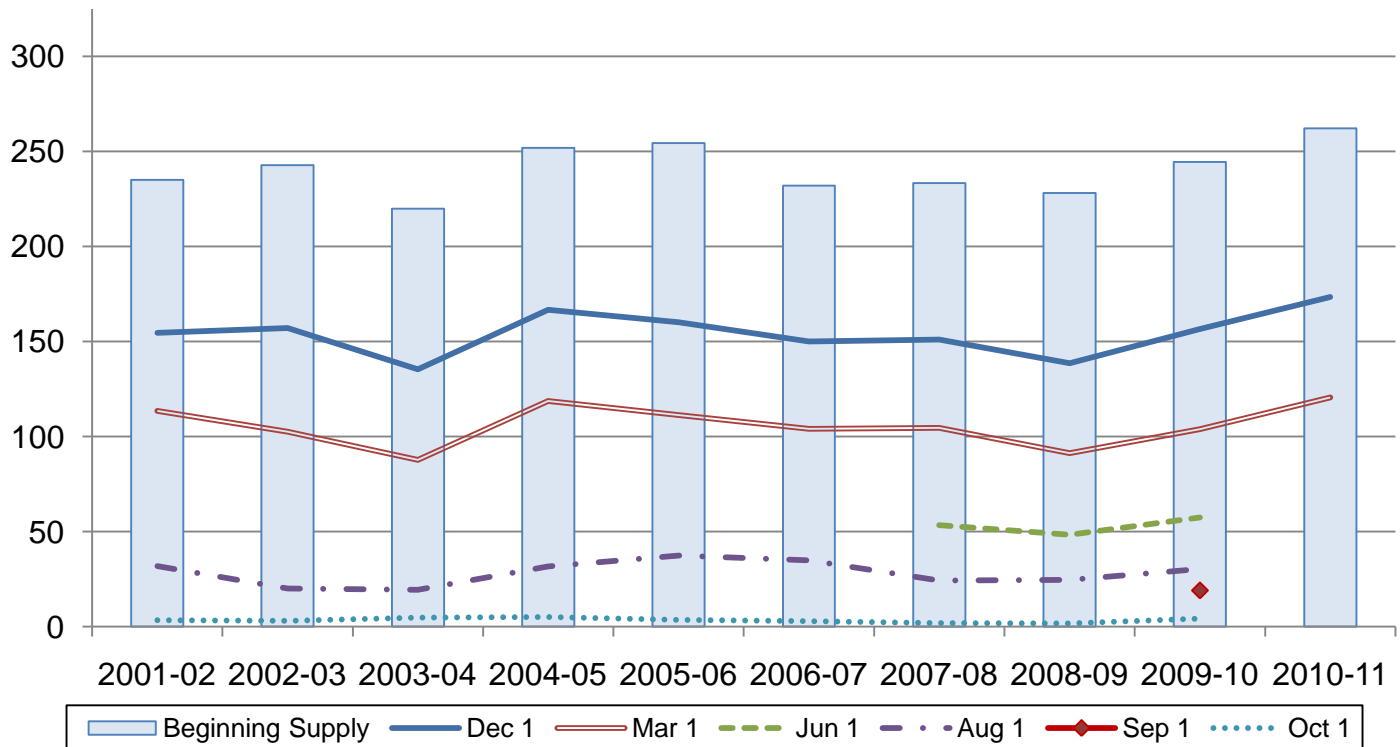
Rough Rice Stocks Up 16 Percent from March 2010

Rough rice stocks in all positions on March 1, 2011, totaled 121 million hundredweight (cwt), up 16 percent from the total on March 1, 2010. Stocks held on farms totaled 33.9 million cwt, and off-farm stocks totaled 86.7 million cwt. Long grain varieties accounted for 72 percent of the total rough rice, medium grain accounted for 26 percent, and short grain varieties accounted for 2 percent.

Milled rice stocks in all positions totaled 6.28 million cwt, up 28 percent from a year ago. Milled rice stocks were comprised of 4.90 million cwt of whole kernel rice and 1.37 million cwt of second heads, screenings, and brewers rice.

Rough Rice Stocks – United States

Million cwt



Rice Stocks by Position and Month – United States: 2010 and 2011 (Domestic Units)

[Blank data cells indicate estimation period has not yet begun]

Date	2010			2011		
	On farms	Off farms ¹	Total all positions	On farms	Off farms ¹	Total all positions
	(1,000 cwt)	(1,000 cwt)	(1,000 cwt)	(1,000 cwt)	(1,000 cwt)	(1,000 cwt)
Rough rice						
March 1	23,465	80,516	103,981	33,895	86,720	120,615
June 1	6,310	51,098	57,408			
August 1	1,200	29,176	30,376			
September 1 ²	788	18,316	19,104			
October 1 ³	25	4,226	4,251			
December 1	63,617	109,869	173,486			
Milled rice						
March 1	(X)	4,895	4,895	(X)	6,275	6,275
June 1	(X)	4,520	4,520			
August 1	(X)	4,380	4,380			
September 1 ²	(X)	4,026	4,026			
October 1 ³	(X)	1,149	1,149			
December 1	(X)	6,302	6,302			

(X) Not applicable.

¹ Includes stocks at mills, elevators, warehouses, ports, and in transit.

² Estimates began in 2010.

³ California only.

Rice Stocks by Position and Month – United States: 2010 and 2011 (Metric Units)

[Data may not add to totals due to rounding. Blank data cells indicate estimation period has not yet begun]

Date	2010			2011		
	On farms	Off farms ¹	Total all positions	On farms	Off farms ¹	Total all positions
	(metric tons)	(metric tons)	(metric tons)	(metric tons)	(metric tons)	(metric tons)
Rough rice						
March 1	1,064,350	3,652,140	4,716,500	1,537,450	3,933,550	5,471,000
June 1	286,220	2,317,770	2,603,980			
August 1	54,430	1,323,400	1,377,830			
September 1 ²	35,740	830,800	866,540			
October 1 ³	1,130	191,690	192,820			
December 1	2,885,620	4,983,570	7,869,190			
Milled rice						
March 1	(X)	222,030	222,030	(X)	284,630	284,630
June 1	(X)	205,020	205,020			
August 1	(X)	198,670	198,670			
September 1 ²	(X)	182,620	182,620			
October 1 ³	(X)	52,120	52,120			
December 1	(X)	285,850	285,850			

(X) Not applicable.

¹ Includes stocks at mills, elevators, warehouses, ports, and in transit.

² Estimates began in 2010.

³ California only.

Rice Stocks by Position – States and United States: March 1, 2010 and 2011

State	2010			2011		
	On farms	Off farms ¹	Total all positions	On farms	Off farms ¹	Total all positions
	(1,000 Cwt)	(1,000 Cwt)	(1,000 Cwt)	(1,000 Cwt)	(1,000 Cwt)	(1,000 Cwt)
Rough rice						
Arkansas	12,600	39,423	52,023	18,400	43,671	62,071
California	1,865	26,890	28,755	1,700	25,528	27,228
Louisiana	4,550	5,391	9,941	4,900	7,039	11,939
Mississippi	2,400	1,010	3,410	(D)	(D)	6,393
Missouri	(D)	(D)	3,488	(D)	(D)	7,189
Texas	(D)	(D)	6,364	860	4,935	5,795
Unallocated ²	2,050	7,802		8,035	5,547	
United States	23,465	80,516	103,981	33,895	86,720	120,615
Milled rice						
Arkansas	(X)	1,383	1,383	(X)	(D)	(D)
California	(X)	1,943	1,943	(X)	2,368	2,368
Louisiana	(X)	769	769	(X)	360	360
Mississippi	(X)	(D)	(D)	(X)	(D)	(D)
Missouri	(X)	(D)	(D)	(X)	(D)	(D)
Texas	(X)	402	402	(X)	927	927
Unallocated ²	(X)	398	398	(X)	2,620	2,620
United States	(X)	4,895	4,895	(X)	6,275	6,275

(D) Withheld to avoid disclosing data for individual operations.

(X) Not applicable.

¹ Includes stocks at mills, elevators, warehouses, ports, and in transit.

² Unallocated includes State data withheld to avoid disclosure of individual operations.

**Rough Rice Stocks By Length of Grain in All Positions – States and United States:
March 1, 2010 and 2011**

State	Long		Medium		Short		Total	
	2010	2011	2010	2011	2010	2011	2010	2011
	(1,000 cwt)	(1,000 cwt)	(1,000 cwt)	(1,000 cwt)	(1,000 cwt)	(1,000 cwt)	(1,000 cwt)	(1,000 cwt)
California	350	(D)	(D)	24,783	(D)	(D)	28,755	27,228
Other States ¹	67,560	(D)	(D)	6,765	(D)	(D)	75,226	93,387
United States	67,910	86,864	33,395	31,548	2,676	2,203	103,981	120,615

(D) Withheld to avoid disclosing data for individual operations.

¹ Other States include Arkansas, Louisiana, Mississippi, Missouri, and Texas.

**Milled Rice Stocks by Length of Grain in All Positions – States and United States:
March 1, 2010 and 2011**

State	Whole kernels (head rice)							
	Long		Medium		Short		Total	
	2010	2011	2010	2011	2010	2011	2010	2011
	(1,000 cwt)	(1,000 cwt)	(1,000 cwt)	(1,000 cwt)	(1,000 cwt)	(1,000 cwt)	(1,000 cwt)	(1,000 cwt)
California	(D)	(D)	1,295	1,595	(D)	(D)	1,371	1,658
Other States ¹	(D)	(D)	177	208	(D)	(D)	2,545	3,245
United States	2,370	3,038	1,472	1,803	74	62	3,916	4,903

State	Broken kernels							
	Second heads		Screenings ²		Brewers		Total	
	2010	2011	2010	2011	2010	2011	2010	2011
	(1,000 cwt)	(1,000 cwt)	(1,000 cwt)	(1,000 cwt)	(1,000 cwt)	(1,000 cwt)	(1,000 cwt)	(1,000 cwt)
California	(D)	358	-	-	(D)	352	572	710
Other States ¹	(D)	276	20	91	(D)	295	407	662
United States	707	634	20	91	252	647	979	1,372

- Represents zero.

(D) Withheld to avoid disclosing data for individual operations.

¹ Other States include Arkansas, Louisiana, Mississippi, Missouri, and Texas.

² Screenings included with second heads in California.

Rice Stocks by Position – States and United States: December 1, 2009 and 2010

State	2009			2010		
	On farms	Off farms ¹	Total all positions	On farms	Off farms ¹	Total all positions
	(1,000 cwt)	(1,000 cwt)	(1,000 cwt)	(1,000 cwt)	(1,000 cwt)	(1,000 cwt)
Rough rice						
Arkansas	28,000	46,384	74,384	34,400	52,476	86,876
California	3,220	38,182	41,402	2,815	36,048	38,863
Louisiana	9,000	7,900	16,900	10,500	9,134	19,634
Mississippi	5,000	1,714	6,714	7,000	2,026	9,026
Missouri	(D)	(D)	7,460	(D)	(D)	10,547
Texas	(D)	(D)	9,746	(D)	(D)	8,540
Unallocated ²	6,660	10,546		8,902	10,185	
United States	51,880	104,726	156,606	63,617	109,869	173,486
Milled rice						
Arkansas	(X)	1,404	1,404	(X)	(D)	(D)
California	(X)	2,918	2,918	(X)	2,367	2,367
Louisiana	(X)	399	399	(X)	624	624
Mississippi	(X)	(D)	(D)	(X)	(D)	(D)
Missouri	(X)	(D)	(D)	(X)	(D)	(D)
Texas	(X)	677	677	(X)	694	694
Unallocated ²	(X)	281	281	(X)	2,617	2,617
United States	(X)	5,679	5,679	(X)	6,302	6,302

(D) Withheld to avoid disclosing data for individual operations.

(X) Not applicable.

¹ Includes stocks at mills, elevators, warehouses, ports, and in transit.

² Unallocated includes State data withheld to avoid disclosure of individual operations.

**Rough Rice Stocks By Length of Grain in All Positions – States and United States:
December 1, 2009 and 2010**

State	Long		Medium		Short		Total	
	2009	2010	2009	2010	2009	2010	2009	2010
	(1,000 cwt)	(1,000 cwt)	(1,000 cwt)	(1,000 cwt)	(1,000 cwt)	(1,000 cwt)	(1,000 cwt)	(1,000 cwt)
California	(D)	(D)	37,029	35,403	(D)	(D)	41,402	38,863
Other States ¹	(D)	(D)	12,235	11,450	(D)	(D)	115,204	134,623
United States	103,430	123,521	49,264	46,853	3,912	3,112	156,606	173,486

(D) Withheld to avoid disclosing data for individual operations.

¹ Other States include Arkansas, Louisiana, Mississippi, Missouri, and Texas.

**Milled Rice Stocks By Length of Grain in All Positions – States and United States:
December 1, 2009 and 2010**

State	Whole kernels (head rice)							
	Long		Medium		Short		Total	
	2009	2010	2009	2010	2009	2010	2009	2010
	(1,000 cwt)	(1,000 cwt)	(1,000 cwt)	(1,000 cwt)	(1,000 cwt)	(1,000 cwt)	(1,000 cwt)	(1,000 cwt)
California	(D)	2	1,247	1,533	(D)	96	1,323	1,631
Other States ¹	(D)	2,663	249	210	(D)	1	2,268	2,874
United States	2,022	2,665	1,496	1,743	73	97	3,591	4,505

State	Broken kernels							
	Second heads		Screenings ²		Brewers		Total	
	2009	2010	2009	2010	2009	2010	2009	2010
	(1,000 cwt)	(1,000 cwt)	(1,000 cwt)	(1,000 cwt)	(1,000 cwt)	(1,000 cwt)	(1,000 cwt)	(1,000 cwt)
California	1,080	(D)	-	-	515	(D)	1,595	736
Other States ¹	294	(D)	52	110	147	(D)	493	1,061
United States	1,374	888	52	110	662	799	2,088	1,797

- Represents zero.

(D) Withheld to avoid disclosing data for individual operations.

¹ Other States include Arkansas, Louisiana, Mississippi, Missouri, and Texas.

² Screenings included with second heads in California.

Statistical Methodology

Survey Procedures: The rice stocks estimates in this report are based on surveys conducted during the first two weeks of March. Separate surveys were conducted to obtain the on-farm and off-farm estimates. The on-farm stocks survey is a probability survey based on a sampling procedure that ensures all operations storing rice in the United States have a chance to be selected. These producers were asked to provide the total quantities of grain stored on their operations as of March 1, 2011 regardless of ownership. Off-farm stocks are a census of all known rice storage facilities. An effort is made to obtain reports from all off-farm facilities. Estimates are made for missing facilities to assure complete coverage.

Estimating Procedures: On-farm and off-farm survey data are reviewed at the State and national levels for reasonableness, consistency with historical estimates, and current crop size. After estimates are made for on-farm and off-farm rice stocks, the total of these two are combined and evaluated using the balance sheet approach. This method utilizes other sources of data to check the reasonableness of the stocks estimates. Estimates of production, exports, and millings are reviewed to make sure beginning stocks, production, utilization, and ending stocks are within reasonable balance and present the best possible estimate of stocks.

Revision Policy: On-farm and off-farm stocks are subject to revision in the quarter following initial publication and again in the following December 1 *Rice Stocks* report published in January each year. Revisions can be made when late reports are received, errors are detected in reporting and calculating, and when production estimates are revised. Estimates will also be reviewed after data from the 5-year Census of Agriculture are available. No revisions to these years will be made after that date.

Reliability: Reliability of the on-farm and off-farm stocks must be treated separately because the survey designs for the two surveys are drastically different. The on-farm stocks estimates are subject to sampling variability because all operations holding on-farm stocks are not included in the sample.

Survey indications are also subject to non-sampling errors such as omission, duplication, imputation for missing data, and mistakes in reporting, recording, and processing the data. Off-farm, as well as on-farm stocks, are subject to these types of errors. These errors cannot be measured directly, but they are minimized through rigid quality controls in the data collection process and a careful review of all reported data for consistency and reasonableness.

Information Contacts

Listed below are the commodity statisticians in the Crops Branch of the National Agricultural Statistics Service to contact for additional information. E-mail inquiries may be sent to nass@nass.usda.gov

Lance Honig, Chief, Crops Branch.....	(202) 720-2127
Jacqueline Moore, Head, Field Crops Section.....	(202) 720-2127
Suzanne Avilla – Peanuts, Rice	(202) 720-7688
Bryan Durham – Hay, Oats.....	(202) 690-3234
Steve Maliszewski – Cotton, Cotton Ginnings, Sorghum.....	(202) 720-5944
Anthony Prillaman – Corn, Proso Millet, Flaxseed	(202) 720-9526
Nick Schauer – Wheat, Rye	(202) 720-8068
Julie Schmidt – Crop Weather, Barley, Sugar Crops.....	(202) 720-7621
Travis Thorson – Soybeans, Sunflower, Other Oilseeds	(202) 720-7369

Access to NASS Reports

For your convenience, you may access NASS reports and products the following ways:

- All reports are available electronically, at no cost, on the NASS web site: <http://www.nass.usda.gov>
- Both national and state specific reports are available via a free e-mail subscription. To set-up this free subscription, visit <http://www.nass.usda.gov> and in the “Receive NASS Updates” box under “Receive reports by Email,” click on “National” or “State” to select the reports you would like to receive.
- Printed reports may be purchased from the National Technical Information Service (NTIS) by calling toll-free (800) 999-6779, or (703) 605-6220 if calling from outside the United States or Canada. Accepted methods of payment are Visa, MasterCard, check, or money order.

For more information on NASS surveys and reports, call the NASS Agricultural Statistics Hotline at (800) 727-9540, 7:30 a.m. to 4:00 p.m. ET, or e-mail: nass@nass.usda.gov.

The United States Department of Agriculture (USDA) prohibits discrimination in all its programs and activities on the basis of race, color, national origin, age, disability, and where applicable, sex, marital status, familial status, parental status, religion, sexual orientation, political beliefs, genetic information, reprisal, or because all or a part of an individual's income is derived from any public assistance program. (Not all prohibited bases apply to all programs.) Persons with disabilities who require alternative means for communication of program information (Braille, large print, audiotape, etc.) should contact USDA's TARGET Center at (202) 720-2600 (voice and TDD).

To file a complaint of discrimination, write to USDA, Assistant Secretary for Civil Rights, Office of the Assistant Secretary for Civil Rights, 1400 Independence Avenue, S.W., Stop 9410, Washington, DC 20250-9410, or call toll-free at (866) 632-9992 (English) or (800) 877-8339 (TDD) or (866) 377-8642 (English Federal-relay) or (800) 845-6136 (Spanish Federal-relay). USDA is an equal opportunity provider and employer.