

Released March 30, 2012, by the National Agricultural Statistics Service (NASS), Agricultural Statistics Board, United States Department of Agriculture (USDA).

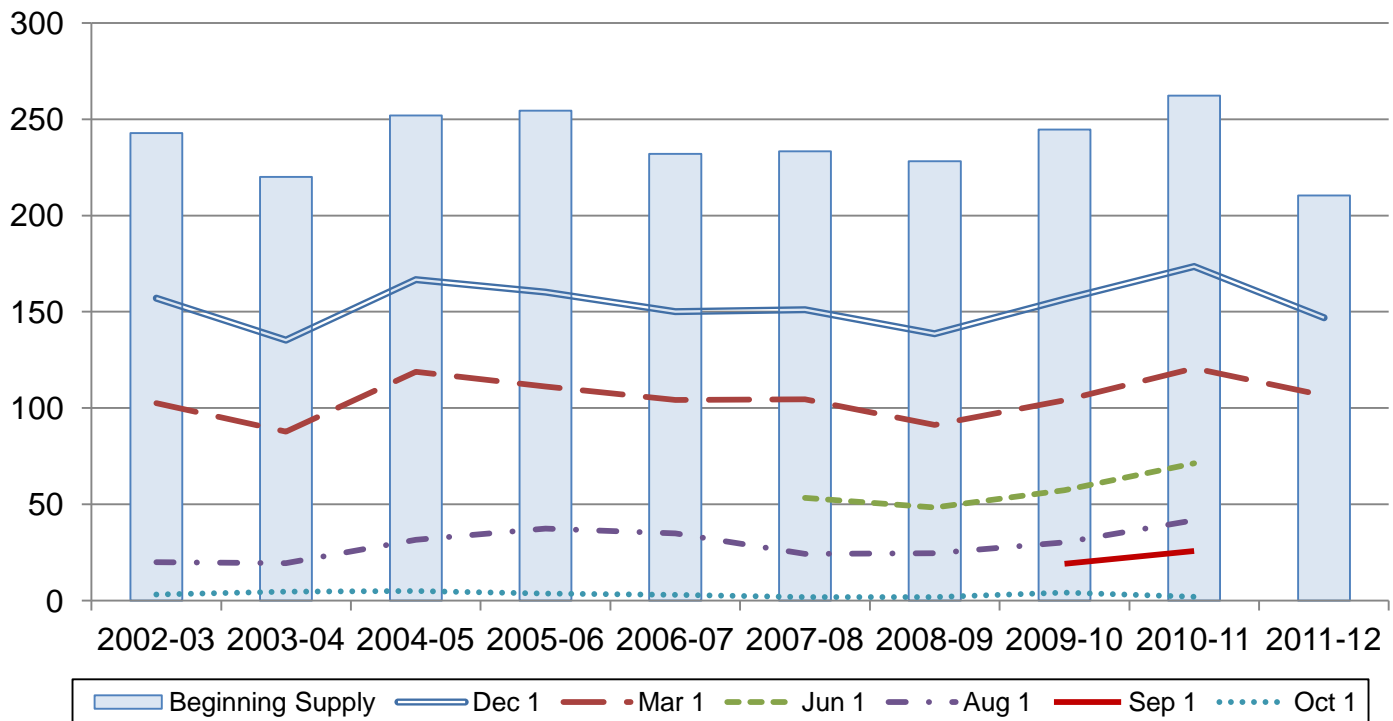
## Rough Rice Stocks Down 12 Percent from March 2011

**Rough rice stocks** in all positions on March 1, 2012, totaled 106 million hundredweight (cwt), down 12 percent from the total on March 1, 2011. Stocks held on farms totaled 23.8 million cwt, and off-farm stocks totaled 82.7 million cwt. Long grain varieties accounted for 64 percent of the total rough rice, medium grain accounted for 34 percent, and short grain varieties accounted for 2 percent.

**Milled rice stocks** in all positions totaled 4.49 million cwt, down 28 percent from a year ago. Milled rice stocks were comprised of 2.84 million cwt of whole kernel rice and 1.65 million cwt of second heads, screenings, and brewers rice.

## Rough Rice Stocks – United States

Million cwt



## Rice Stocks by Position and Month – United States: 2011 and 2012 (Domestic Units)

[Blank data cells indicate estimation period has not yet begun]

Date	2011			2012		
	On farms	Off farms <sup>1</sup>	Total all positions	On farms	Off farms <sup>1</sup>	Total all positions
	(1,000 cwt)	(1,000 cwt)	(1,000 cwt)	(1,000 cwt)	(1,000 cwt)	(1,000 cwt)
<b>Rough rice</b>						
March 1 .....	33,895	86,720	120,615	23,825	82,666	106,491
June 1 .....	13,227	58,146	71,373			
August 1 .....	3,772	37,917	41,689			
September 1 .....	2,242	23,613	25,855			
October 1 <sup>2</sup> .....	15	2,048	2,063			
December 1 .....	41,180	105,689	146,869			
<b>Milled rice</b>						
March 1 .....	(X)	6,275	6,275	(X)	4,494	4,494
June 1 .....	(X)	5,968	5,968			
August 1 .....	(X)	4,667	4,667			
September 1 .....	(X)	3,998	3,998			
October 1 <sup>2</sup> .....	(X)	1,337	1,337			
December 1 .....	(X)	6,243	6,243			

(X) Not applicable.

<sup>1</sup> Includes stocks at mills, elevators, warehouses, ports, and in transit.

<sup>2</sup> California only.

## Rice Stocks by Position and Month – United States: 2011 and 2012 (Metric Units)

[Data may not add to totals due to rounding. Blank data cells indicate estimation period has not yet begun]

Date	2011			2012		
	On farms	Off farms <sup>1</sup>	Total all positions	On farms	Off farms <sup>1</sup>	Total all positions
	(metric tons)	(metric tons)	(metric tons)	(metric tons)	(metric tons)	(metric tons)
<b>Rough rice</b>						
March 1 .....	1,537,450	3,933,550	5,471,000	1,080,680	3,749,670	4,830,350
June 1 .....	599,970	2,637,460	3,237,430			
August 1 .....	171,100	1,719,890	1,890,980			
September 1 .....	101,700	1,071,070	1,172,760			
October 1 <sup>2</sup> .....	680	92,900	93,580			
December 1 .....	1,867,890	4,793,970	6,661,870			
<b>Milled rice</b>						
March 1 .....	(X)	284,630	284,630	(X)	203,840	203,840
June 1 .....	(X)	270,700	270,700			
August 1 .....	(X)	211,690	211,690			
September 1 .....	(X)	181,350	181,350			
October 1 <sup>2</sup> .....	(X)	60,650	60,650			
December 1 .....	(X)	283,180	283,180			

(X) Not applicable.

<sup>1</sup> Includes stocks at mills, elevators, warehouses, ports, and in transit.

<sup>2</sup> California only.

# Rice Stocks by Position – States and United States: March 1, 2011 and 2012

State	2011			2012		
	On farms	Off farms <sup>1</sup>	Total all positions	On farms	Off farms <sup>1</sup>	Total all positions
	(1,000 Cwt)	(1,000 Cwt)	(1,000 Cwt)	(1,000 Cwt)	(1,000 Cwt)	(1,000 Cwt)
<b>Rough rice</b>						
Arkansas .....	18,400	43,671	62,071	13,900	40,435	54,335
California .....	1,700	25,528	27,228	1,815	24,756	26,571
Louisiana .....	4,900	7,039	11,939	4,100	6,959	11,059
Mississippi .....	(D)	(D)	6,393	(D)	(D)	4,270
Missouri .....	(D)	(D)	7,189	(D)	(D)	4,121
Texas .....	860	4,935	5,795	880	5,255	6,135
Unallocated <sup>2</sup> .....	8,035	5,547	-	3,130	5,261	-
United States .....	33,895	86,720	120,615	23,825	82,666	106,491
<b>Milled rice</b>						
Arkansas .....	(X)	(D)	(D)	(X)	1,358	1,358
California .....	(X)	2,368	2,368	(X)	1,891	1,891
Louisiana .....	(X)	360	360	(X)	(D)	(D)
Mississippi .....	(X)	(D)	(D)	(X)	(D)	(D)
Missouri .....	(X)	(D)	(D)	(X)	(D)	(D)
Texas .....	(X)	927	927	(X)	472	472
Unallocated <sup>2</sup> .....	(X)	2,620	2,620	(X)	773	773
United States .....	(X)	6,275	6,275	(X)	4,494	4,494

- Represents zero.

(D) Withheld to avoid disclosing data for individual operations.

(X) Not applicable.

<sup>1</sup> Includes stocks at mills, elevators, warehouses, ports, and in transit.

<sup>2</sup> Unallocated includes State data withheld to avoid disclosure of individual operations.

**Rough Rice Stocks By Length of Grain in All Positions – States and United States:  
March 1, 2011 and 2012**

State	Long		Medium		Short		Total	
	2011	2012	2011	2012	2011	2012	2011	2012
	(1,000 cwt)	(1,000 cwt)	(1,000 cwt)	(1,000 cwt)	(1,000 cwt)	(1,000 cwt)	(1,000 cwt)	(1,000 cwt)
California .....	(D)	366	24,783	24,163	(D)	2,042	27,228	26,571
Other States <sup>1</sup> .....	(D)	68,103	6,765	11,815	(D)	2	93,387	79,920
United States .....	86,864	68,469	31,548	35,978	2,203	2,044	120,615	106,491

(D) Withheld to avoid disclosing data for individual operations.

<sup>1</sup> Other States include Arkansas, Louisiana, Mississippi, Missouri, and Texas.

**Milled Rice Stocks by Length of Grain in All Positions – States and United States:  
March 1, 2011 and 2012**

State	Whole kernels (head rice)							
	Long		Medium		Short		Total	
	2011	2012	2011	2012	2011	2012	2011	2012
	(1,000 cwt)	(1,000 cwt)	(1,000 cwt)	(1,000 cwt)	(1,000 cwt)	(1,000 cwt)	(1,000 cwt)	(1,000 cwt)
California .....	(D)	(D)	1,595	757	(D)	(D)	1,658	807
Other States <sup>1</sup> .....	(D)	(D)	208	178	(D)	(D)	3,245	2,033
United States .....	3,038	1,856	1,803	935	62	49	4,903	2,840

State	Broken kernels							
	Second heads		Screenings <sup>2</sup>		Brewers		Total	
	2011	2012	2011	2012	2011	2012	2011	2012
	(1,000 cwt)	(1,000 cwt)	(1,000 cwt)	(1,000 cwt)	(1,000 cwt)	(1,000 cwt)	(1,000 cwt)	(1,000 cwt)
California .....	358	674	-	-	352	410	710	1,084
Other States <sup>1</sup> .....	276	347	91	82	295	141	662	570
United States .....	634	1,021	91	82	647	551	1,372	1,654

- Represents zero.

(D) Withheld to avoid disclosing data for individual operations.

<sup>1</sup> Other States include Arkansas, Louisiana, Mississippi, Missouri, and Texas.

<sup>2</sup> Screenings included with second heads in California.

# Rice Stocks by Position – States and United States: December 1, 2010 and 2011

State	2010			2011		
	On farms	Off farms <sup>1</sup>	Total all positions	On farms	Off farms <sup>1</sup>	Total all positions
	(1,000 cwt)	(1,000 cwt)	(1,000 cwt)	(1,000 cwt)	(1,000 cwt)	(1,000 cwt)
<b>Rough rice</b>						
Arkansas .....	34,400	52,476	86,876	21,300	45,492	66,792
California .....	2,815	36,048	38,863	2,920	36,847	39,767
Louisiana .....	10,500	9,134	19,634	8,100	9,538	17,638
Mississippi .....	7,000	2,026	9,026	(D)	(D)	6,512
Missouri .....	(D)	(D)	10,547	(D)	(D)	6,988
Texas .....	(D)	(D)	8,540	2,260	6,912	9,172
Unallocated <sup>2</sup> .....	8,902	10,185	-	6,600	6,900	-
United States .....	63,617	109,869	173,486	41,180	105,689	146,869
<b>Milled rice</b>						
Arkansas .....	(X)	(D)	(D)	(X)	1,869	1,869
California .....	(X)	2,367	2,367	(X)	2,321	2,321
Louisiana .....	(X)	624	624	(X)	837	837
Mississippi .....	(X)	(D)	(D)	(X)	(D)	(D)
Missouri .....	(X)	(D)	(D)	(X)	(D)	(D)
Texas .....	(X)	694	694	(X)	951	951
Unallocated <sup>2</sup> .....	(X)	2,617	2,617	(X)	265	265
United States .....	(X)	6,302	6,302	(X)	6,243	6,243

- Represents zero.

(D) Withheld to avoid disclosing data for individual operations.

(X) Not applicable.

<sup>1</sup> Includes stocks at mills, elevators, warehouses, ports, and in transit.

<sup>2</sup> Unallocated includes State data withheld to avoid disclosure of individual operations.

**Rough Rice Stocks By Length of Grain in All Positions – States and United States:  
December 1, 2010 and 2011**

State	Long		Medium		Short		Total	
	2010	2011	2010	2011	2010	2011	2010	2011
	(1,000 cwt)	(1,000 cwt)	(1,000 cwt)	(1,000 cwt)	(1,000 cwt)	(1,000 cwt)	(1,000 cwt)	(1,000 cwt)
California .....	(D)	453	35,403	36,407	(D)	2,907	38,863	39,767
Other States <sup>1</sup> .....	(D)	92,574	11,450	14,528	(D)	-	134,623	107,102
United States .....	123,521	93,027	46,853	50,935	3,112	2,907	173,486	146,869

- Represents zero.

(D) Withheld to avoid disclosing data for individual operations.

<sup>1</sup> Other States include Arkansas, Louisiana, Mississippi, Missouri, and Texas.

**Milled Rice Stocks By Length of Grain in All Positions – States and United States:  
December 1, 2010 and 2011**

State	Whole kernels (head rice)							
	Long		Medium		Short		Total	
	2010	2011	2010	2011	2010	2011	2010	2011
	(1,000 cwt)	(1,000 cwt)	(1,000 cwt)	(1,000 cwt)	(1,000 cwt)	(1,000 cwt)	(1,000 cwt)	(1,000 cwt)
California .....	2	(D)	1,533	1,143	96	(D)	1,631	1,341
Other States <sup>1</sup> .....	2,663	(D)	210	263	1	(D)	2,874	2,963
United States .....	2,665	2,699	1,743	1,406	97	199	4,505	4,304

State	Broken kernels							
	Second heads		Screenings <sup>2</sup>		Brewers		Total	
	2010	2011	2010	2011	2010	2011	2010	2011
	(1,000 cwt)	(1,000 cwt)	(1,000 cwt)	(1,000 cwt)	(1,000 cwt)	(1,000 cwt)	(1,000 cwt)	(1,000 cwt)
California .....	(D)	465	-	-	(D)	515	736	980
Other States <sup>1</sup> .....	(D)	572	110	192	(D)	195	1,061	959
United States .....	888	1,037	110	192	799	710	1,797	1,939

- Represents zero.

(D) Withheld to avoid disclosing data for individual operations.

<sup>1</sup> Other States include Arkansas, Louisiana, Mississippi, Missouri, and Texas.

<sup>2</sup> Screenings included with second heads in California.

## Statistical Methodology

**Survey Procedures:** The rice stocks estimates in this report are based on surveys conducted during the first two weeks of March. Separate surveys were conducted to obtain the on-farm and off-farm estimates. The on-farm stocks survey is a probability survey based on a sampling procedure that ensures all operations storing rice in the United States have a chance to be selected. These producers were asked to provide the total quantities of grain stored on their operations as of March 1, 2012 regardless of ownership. Off-farm stocks are a census of all known rice storage facilities. An effort is made to obtain reports from all off-farm facilities. Estimates are made for missing facilities to assure complete coverage.

**Estimating Procedures:** On-farm and off-farm survey data are reviewed at the State and national levels for reasonableness, consistency with historical estimates, and current crop size. After estimates are made for on-farm and off-farm rice stocks, the total of these two are combined and evaluated using the balance sheet approach. This method utilizes other sources of data to check the reasonableness of the stocks estimates. Estimates of production, exports, and millings are reviewed to make sure beginning stocks, production, utilization, and ending stocks are within reasonable balance and present the best possible estimate of stocks.

**Revision Policy:** On-farm and off-farm stocks are subject to revision in the quarter following initial publication and again in the following December 1 *Rice Stocks* report published in January each year. Revisions can be made when late reports are received, errors are detected in reporting and calculating, and when production estimates are revised. Estimates will also be reviewed after data from the 5-year Census of Agriculture are available. No revisions to these years will be made after that date.

**Reliability:** Reliability of the on-farm and off-farm stocks must be treated separately because the survey designs for the two surveys are drastically different. The on-farm stocks estimates are subject to sampling variability because all operations holding on-farm stocks are not included in the sample.

Survey indications are also subject to non-sampling errors such as omission, duplication, imputation for missing data, and mistakes in reporting, recording, and processing the data. Off-farm, as well as on-farm stocks, are subject to these types of errors. These errors cannot be measured directly, but they are minimized through rigid quality controls in the data collection process and a careful review of all reported data for consistency and reasonableness.

## Information Contacts

Listed below are the commodity statisticians in the Crops Branch of the National Agricultural Statistics Service to contact for additional information. E-mail inquiries may be sent to [nass@nass.usda.gov](mailto:nass@nass.usda.gov)

Lance Honig, Chief, Crops Branch.....	(202) 720-2127
Jacqueline Moore, Head, Field Crops Section.....	(202) 720-2127
Suzanne Avilla – Peanuts, Rice .....	(202) 720-7688
Bryan Durham – Oats, Rye, Wheat.....	(202) 720-8068
Steve Maliszewski – Cotton, Cotton Ginnings, Sorghum.....	(202) 720-5944
Anthony Prillaman – Corn, Flaxseed, Proso Millet .....	(202) 720-9526
Julie Schmidt – Crop Weather, Barley, Hay .....	(202) 720-7621
Travis Thorson – Soybeans, Sunflower, Other Oilseeds .....	(202) 720-7369

## Access to NASS Reports

For your convenience, you may access NASS reports and products the following ways:

- All reports are available electronically, at no cost, on the NASS web site: <http://www.nass.usda.gov>
- Both national and state specific reports are available via a free e-mail subscription. To set-up this free subscription, visit <http://www.nass.usda.gov> and in the “Follow NASS” box under “Receive reports by Email,” click on “National” or “State” to select the reports you would like to receive.
- Printed reports may be purchased from the National Technical Information Service (NTIS) by calling toll-free (800) 999-6779, or (703) 605-6220 if calling from outside the United States or Canada. Accepted methods of payment are Visa, MasterCard, check, or money order.

For more information on NASS surveys and reports, call the NASS Agricultural Statistics Hotline at (800) 727-9540, 7:30 a.m. to 4:00 p.m. ET, or e-mail: [nass@nass.usda.gov](mailto:nass@nass.usda.gov).

The United States Department of Agriculture (USDA) prohibits discrimination in all its programs and activities on the basis of race, color, national origin, age, disability, and where applicable, sex, marital status, familial status, parental status, religion, sexual orientation, political beliefs, genetic information, reprisal, or because all or a part of an individual's income is derived from any public assistance program. (Not all prohibited bases apply to all programs.) Persons with disabilities who require alternative means for communication of program information (Braille, large print, audiotape, etc.) should contact USDA's TARGET Center at (202) 720-2600 (voice and TDD).

To file a complaint of discrimination, write to USDA, Assistant Secretary for Civil Rights, Office of the Assistant Secretary for Civil Rights, 1400 Independence Avenue, S.W., Stop 9410, Washington, DC 20250-9410, or call toll-free at (866) 632-9992 (English) or (800) 877-8339 (TDD) or (866) 377-8642 (English Federal-relay) or (800) 845-6136 (Spanish Federal-relay). USDA is an equal opportunity provider and employer.