



United States  
Department of  
Agriculture

National  
Agricultural  
Statistics  
Service



Statistical  
Bulletin  
Number 994 a

# Poultry Production and Value

## Final Estimates 1998-2002

April 2004

# USDA





## Contents

	<b>Page</b>
Summary . . . . .	2
Value of Production: Broiler, Eggs, Turkeys, Chickens, and Total, United States, 1998-02 . . . . .	3
Broilers: Production, Price, and Value, United States, 1998-02 . . . . .	4
Turkeys: Production, Price, and Value, United States, 1998-02 . . . . .	5
Eggs: Production, Price, and Value, United States, 1998-02 . . . . .	6
Chickens: Lost, Sold for Slaughter, Price, and Value, United States, 1998-02 . . . . .	7
Broilers: Production, Price, and Value by State and Total, 1998 . . . . .	8
Broilers: Production, Price, and Value by State and Total, 1999 . . . . .	9
Broilers: Production, Price, and Value by State and Total, 2000 . . . . .	10
Broilers: Production, Price, and Value by State and Total, 2001 . . . . .	11
Broilers: Production, Price, and Value by State and Total, 2002 . . . . .	12
Turkeys: Production, Price, and Value by State and United States, 1998 . . . . .	13
Turkeys: Production, Price, and Value by State and United States, 1999 . . . . .	14
Turkeys: Production, Price, and Value by State and United States, 2000 . . . . .	15
Turkeys: Production, Price, and Value by State and United States, 2001 . . . . .	16
Turkeys: Production, Price, and Value by State and United States, 2002 . . . . .	17
Eggs: Production, Price, and Value by State and United States, 1998-99 . . . . .	18
Eggs: Production, Price, and Value by State and United States, 2000-01 . . . . .	19
Eggs: Production, Price, and Value by State and United States, 2002 . . . . .	20
Chickens: Lost, Sold for Slaughter, Price, and Value by State and United States, 1998 . . . . .	21
Chickens: Lost, Sold for Slaughter, Price, and Value by State and United States, 1999 . . . . .	22
Chickens: Lost, Sold for Slaughter, Price, and Value by State and United States, 2000 . . . . .	23
Chickens: Lost, Sold for Slaughter, Price, and Value by State and United States, 2001 . . . . .	24
Chickens: Lost, Sold for Slaughter, Price, and Value by State and United States, 2002 . . . . .	25
Statistical Bulletin Publication and Other ASB Services . . . . .	26

### Update Alert

This report is being reissued to correct egg value of production on pages 18, 19, and 20. State and US value of production for eggs changed for 1998 through 2002.

### Summary

**Poultry - Production and Value:** Final Estimates by States and United States, 1998-02, U.S. Department of Agriculture Statistics Board, National Agricultural Statistics Service, Statistics Board, Statistics Bulletin No. 944.

**Procedures:** Revisions were made after a thorough review of the original survey data and all data now available, including the 2002 Census of Agriculture. The 1998-02 estimates shown herein are considered final and will not be revised again.

**Historic Estimates:** Final estimates of Poultry Production and Value in earlier years are available in Statistical Bulletins:

**Broiler and Chickens:** No. 958 for 1994-97, No. 910 for 1988-93, No. 806 for 1984-87, No. 725 for 1980-83, No. 677 for 1976-79, No. 602 for 1970-75, No. 512 for 1965-69, No. 399 for 1960-64, No. 287 for 1955-59, No. 183 for 1950-54, Farm Production, Disposition and Income from Chicken and Eggs, 1945-49 (released June 1952), and No. 133 for 1909-44.

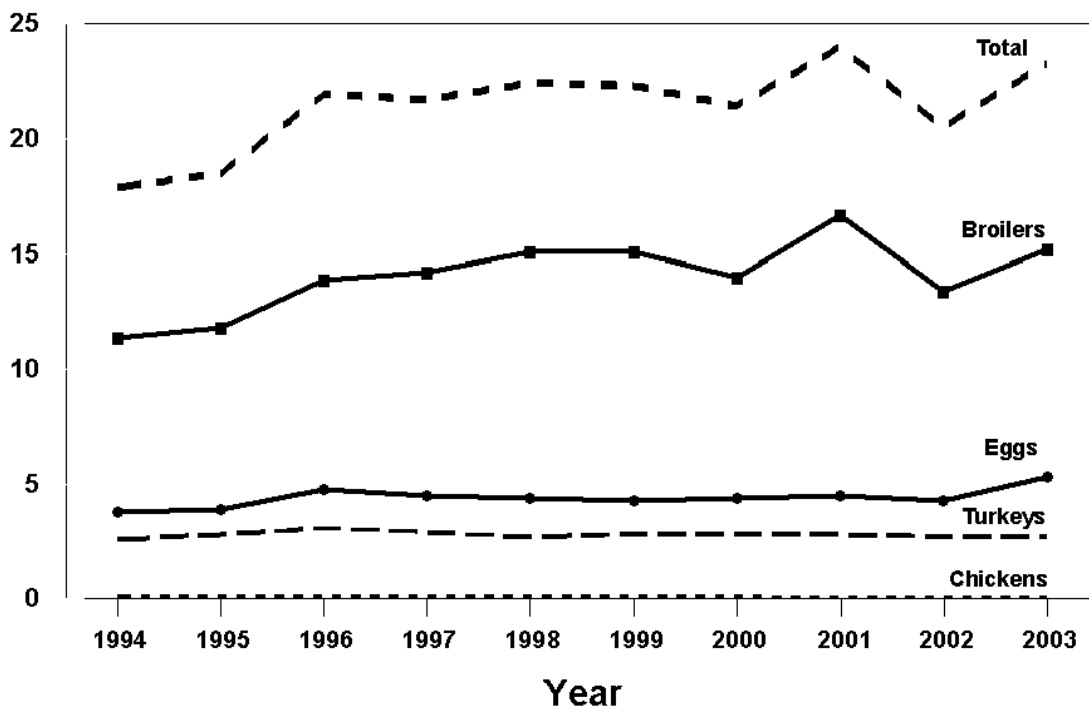
**Turkeys:** No. 958 for 1994-97, No. 910 for 1988-93, No. 806 for 1984-87, No. 725 for 1980-83, No. 671 for 1976-79, No. 497 for 1970-75, No. 497 for 1965-69, No. 396 for 1960-64, No. 286 for 1955-59, No. 182 for 1950-54. Turkey values before 1950 are in Farm Production, Disposition and Income from Turkeys, 1945-49, May 1952 and Farm Production, Disposition and Income from Turkeys, 1929-44, June 1953.

**Revisions to estimates for Poultry Values at the National level are as follows:**

U.S. Annual Value of Broiler Production				U.S. Annual Value of Turkey Production		
Year	From (\$1,000)	To (\$1,000)	Change %	From (\$1,000)	To (\$1,000)	Change %
1998	15,144,551	15,146,560	0.0	2,679,301	2,683,473	0.2
1999	15,128,840	15,128,509	-0.0	2,809,874	2,806,630	-0.1
2000	13,988,434	13,989,424	0.0	2,822,736	2,828,489	0.2
2001	16,693,515	16,696,089	0.0	2,790,317	2,796,821	0.2
2002	13,434,771	13,437,345	0.0	2,700,333	2,732,481	1.2
U.S. Annual Value of Egg Production				U.S. Annual Value of Chickens Sold		
Year	From (\$1,000)	To (\$1,000)	Change %	From (\$1,000)	To (\$1,000)	Change %
1998	4,439,446	4,441,139	0.0	75,542	79,987	5.9
1999	4,287,164	4,292,371	0.1	73,150	75,217	2.8
2000	4,345,382	4,358,648	0.3	63,925	63,988	0.1
2001	4,446,312	4,460,701	0.3	46,353	47,249	1.9
2002	4,262,662	4,284,930	0.5	49,023	49,931	1.9

## Value of Production: Broilers, Eggs, Turkeys, Chickens and Total, United States, 1994-2003

Billion Dollars



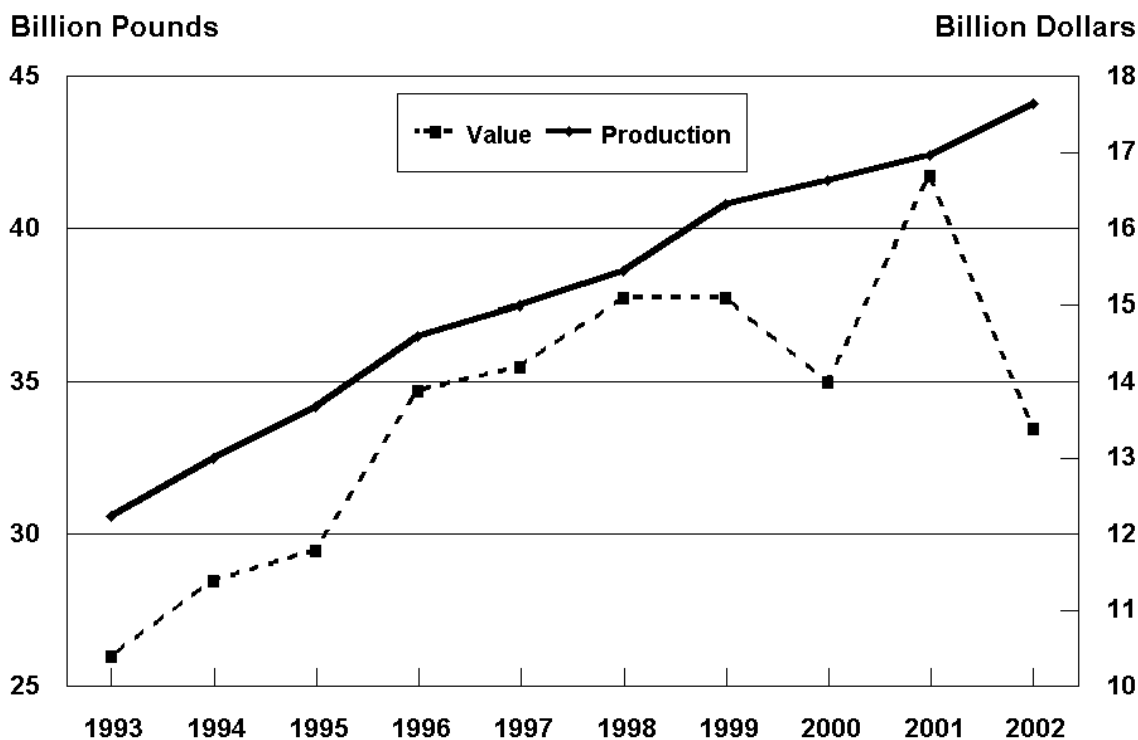
**Value of Production: Broilers, Eggs, Turkeys, Chickens, and Total, United States, 1998-02**

Year	Broilers <sup>1</sup>	Eggs	Turkeys	Chickens <sup>2</sup>	Total
	<i>1,000 Dollars</i>	<i>1,000 Dollars</i>	<i>1,000 Dollars</i>	<i>1,000 Dollars</i>	<i>1,000 Dollars</i>
1998	15,146,560	4,441,139	2,683,473	79,987	22,351,159
1999	15,128,509	4,292,371	2,806,630	75,217	22,302,727
2000	13,989,424	4,358,648	2,828,489	63,988	21,240,549
2001	16,696,089	4,460,701	2,796,821	47,249	24,000,860
2002	13,437,345	4,284,930	2,732,481	49,931	20,504,687

<sup>1</sup> Excludes States which produced less than 500,000 broilers.

<sup>2</sup> Value of sales.

## Broiler Production and Value of Production United States, 1993-02



**Broilers: Production, Price, and Value, United States, 1998-02** <sup>1 2</sup>

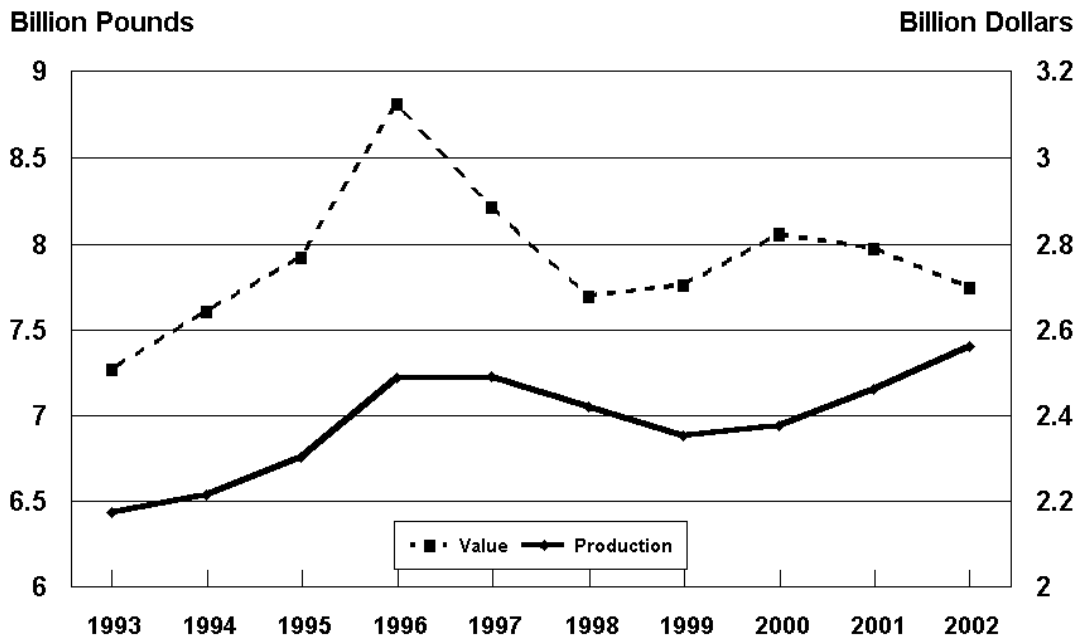
Year	Number Produced	Pounds Produced	Price per Pound <sup>3</sup>	Value of Production
	<i>1,000 Head</i>	<i>1,000 Pounds</i>	<i>Dollars</i>	<i>1,000 Dollars</i>
1998	7,934,260	38,557,400	0.393	15,146,560
1999	8,146,410	40,829,000	0.371	15,128,509
2000	8,283,700	41,626,100	0.336	13,989,424
2001	8,389,770	42,452,400	0.393	16,696,089
2002	8,591,080	44,058,700	0.305	13,437,345

<sup>1</sup> Estimates cover the 12-month period Dec 1, previous year through Nov 30.

<sup>2</sup> Broiler production including other domestic meat-type breeds.

<sup>3</sup> Liveweight equivalent price.

## Turkey Production and Value of Production United States, 1993-02



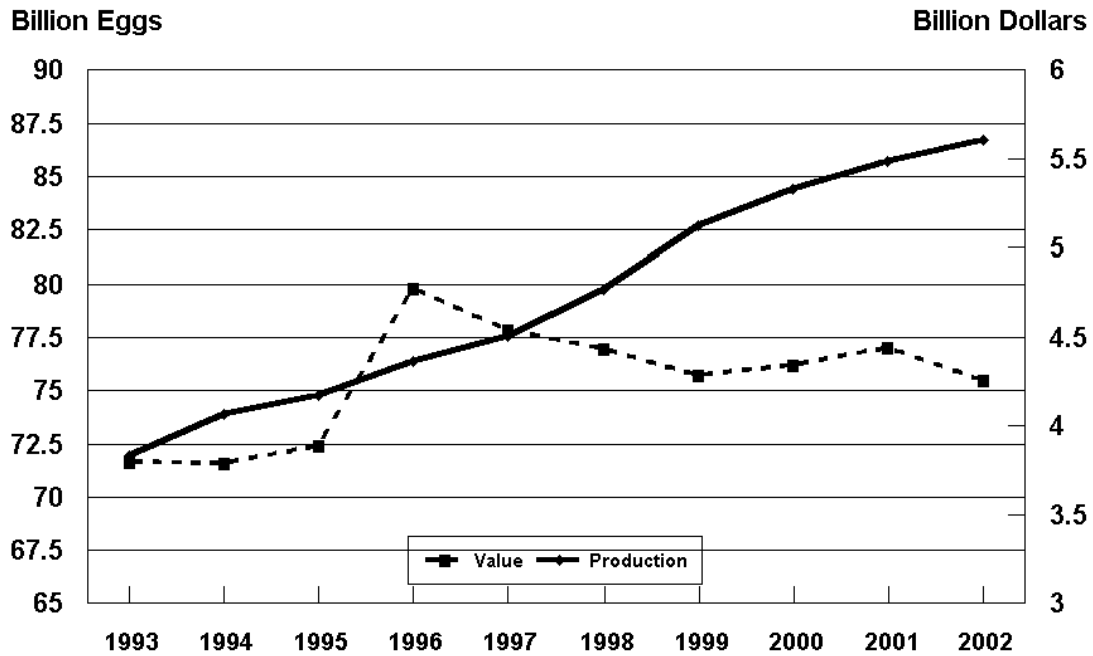
**Turkeys: Production, Price, and Value, United States, 1998-02 <sup>1</sup>**

Year	Number Produced	Pounds Produced	Price per Pound <sup>2</sup>	Value of Production
	<i>1,000 Head</i>	<i>1,000 Pounds</i>	<i>Dollars</i>	<i>1,000 Dollars</i>
1998	285,603	7,061,925	0.380	2,683,473
1999	270,192	6,877,399	0.408	2,806,630
2000	270,466	6,959,833	0.406	2,828,489
2001	272,660	7,173,111	0.390	2,796,821
2002	275,477	7,494,861	0.365	2,732,481

<sup>1</sup> Excludes young turkeys lost.

<sup>2</sup> Liveweight equivalent price.

## All Egg Production and Value of Production United States, 1993-2002



**Eggs: Production, Price, and Value, United States, 1998-02 <sup>1</sup>**

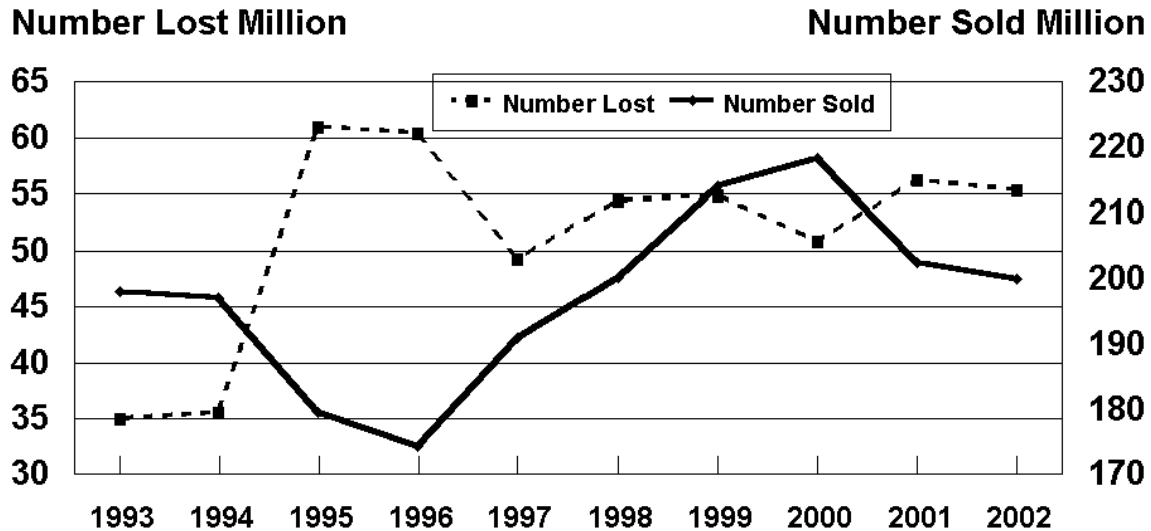
Year	Eggs Produced	Price per Dozen <sup>2</sup>	Value of Production
	<i>Million</i>	<i>Dollars</i>	<i>1,000 Dollars</i>
1998	79,777	0.668	4,441,139
1999	82,946	0.621	4,292,371
2000	84,717	0.617	4,358,648
2001	86,093	0.622	4,460,701
2002	87,252	0.589	4,284,930

<sup>1</sup> Estimates cover the 12-month period Dec 1, previous year through Nov 30.

<sup>2</sup> Average of all eggs sold by producers, including hatching eggs.



# Chickens Number Lost and Sold for Slaughter 1/ United States, 1993-2002



1/ Starting in 1995 Number Lost included rendered, died, destroyed, composted and other disappearance. Prior to 1995 rendered was included in Sold rather than in Lost.

**Chickens: Lost, Sold for Slaughter, Price, and Value, United States, 1998-02 <sup>1</sup>**

Year	Number Lost <sup>2</sup>	Number Sold for Slaughter	Pounds Sold	Price per Pound	Value of Sales
	<i>1,000 Head</i>	<i>1,000 Head</i>	<i>1,000 Pounds</i>	<i>Dollars</i>	<i>1,000 Dollars</i>
1998	53,428	200,286	977,060	0.081	79,987
1999	54,951	214,063	1,059,153	0.071	75,217
2000	50,907	218,411	1,112,604	0.057	63,988
2001	56,146	202,482	1,032,115	0.045	47,249
2002	55,330	199,931	1,039,118	0.048	49,931

<sup>1</sup> Estimates cover the 12 month period Dec 1, previous year through Nov 30 and excludes broilers.

<sup>2</sup> Includes rendered, died, destroyed, composted or disappeared for any reason during the 12-month period.

**Broilers: Production, Price, and Value  
by State and Total, 1998<sup>1 2</sup>**

State	Number Produced	Pounds Produced	Price per Pound <sup>3</sup>	Value of Production
	<i>1,000 Head</i>	<i>1,000 Pounds</i>	<i>Dollars</i>	<i>1,000 Dollars</i>
AL	921,800	4,516,800	0.400	1,806,720
AR	1,170,600	5,618,900	0.380	2,135,182
DE	259,800	1,428,900	0.390	557,271
FL	129,000	632,100	0.400	252,840
GA	1,202,500	5,892,300	0.405	2,386,382
HI	1,000	4,400	0.525	2,310
KY	172,000	842,800	0.395	332,906
MD	290,900	1,367,200	0.390	533,208
MN	42,300	207,300	0.390	80,847
MS	722,400	3,467,500	0.395	1,369,663
MO	255,000	1,096,500	0.380	416,670
NE	1,200	7,200	0.390	2,808
NY	1,900	9,900	0.410	4,059
NC	653,000	3,591,500	0.395	1,418,643
OH	46,000	234,600	0.390	91,494
OK	216,000	993,600	0.380	377,568
PA	135,500	691,100	0.385	266,074
SC	180,500	848,400	0.395	335,118
TN	159,200	716,400	0.395	282,978
TX	480,000	2,160,000	0.390	842,400
VA	263,300	1,263,800	0.385	486,563
WV	89,600	358,400	0.400	143,360
WI	34,100	163,700	0.365	59,751
Oth Sts <sup>4</sup>	506,660	2,444,100	0.393	961,745
Total <sup>5</sup>	7,934,260	38,557,400	0.393	15,146,560
15 Weekly Sts <sup>6</sup>	6,906,100	33,818,100	0.394	13,322,322

<sup>1</sup> December 1, 1997, through November 30, 1998.

<sup>2</sup> Broiler production including other domestic meat-type breeds.

<sup>3</sup> Liveweight equivalent prices, derived from ready-to-cook (RTC) prices using the following formulas: RTC price minus processing cost X (dressing percentage) = liveweight equivalent price.

<sup>4</sup> CA, IA, IN, LA, ME, MI, OR, and WA, combined to avoid disclosing individual operations.

<sup>5</sup> Excludes States producing less than 500,000 birds.

<sup>6</sup> 15 States in the weekly estimating program: AL, AR, CA, DE, FL, GA, MD, MS, NC, PA, SC, TN, TX, VA, and WV.

**Broilers: Production, Price, and Value  
by State and Total, 1999<sup>1 2</sup>**

State	Number Produced	Pounds Produced	Price per Pound <sup>3</sup>	Value of Production
	<i>1,000 Head</i>	<i>1,000 Pounds</i>	<i>Dollars</i>	<i>1,000 Dollars</i>
AL	971,200	4,953,100	0.380	1,882,178
AR	1,196,200	5,861,400	0.370	2,168,718
DE	251,700	1,409,500	0.360	507,420
FL	122,200	647,700	0.380	246,126
GA	1,239,700	6,198,500	0.370	2,293,445
HI	1,000	4,300	0.520	2,236
KY	188,800	981,800	0.370	363,266
MD	294,400	1,472,000	0.360	529,920
MN	44,200	216,600	0.360	77,976
MS	735,100	3,675,500	0.360	1,323,180
MO	258,800	1,164,600	0.370	430,902
NE	2,800	14,600	0.370	5,402
NY	2,000	11,000	0.390	4,290
NC	674,600	3,865,500	0.370	1,430,235
OH	50,500	262,600	0.370	97,162
OK	216,400	1,017,100	0.370	376,327
PA	135,300	703,600	0.370	260,332
SC	191,300	924,000	0.370	341,880
TN	150,800	723,800	0.370	267,806
TX	507,900	2,387,100	0.370	883,227
VA	268,700	1,316,600	0.360	473,976
WV	89,500	358,000	0.370	132,460
WI	33,800	158,900	0.360	57,204
Oth Sts <sup>4</sup>	519,510	2,501,200	0.389	972,841
Total <sup>5</sup>	8,146,410	40,829,000	0.371	15,128,509
Sts <sup>6</sup>	7,080,200	35,779,500	0.370	13,254,183

<sup>1</sup> December 1, 1998, through November 30, 1999.

<sup>2</sup> Broiler production including other domestic meat-type breeds.

<sup>3</sup> Liveweight equivalent prices, derived from ready-to-cook (RTC) prices using the following formulas: RTC price minus processing cost X (dressing percentage) = liveweight equivalent price.

<sup>4</sup> CA, IN, IA, LA, ME, MI, OR, and WA, combined to avoid disclosing individual operations.

<sup>5</sup> Excludes States producing less than 500,000 birds.

<sup>6</sup> 15 States in the weekly estimating program: AL, AR, CA, DE, FL, GA, MD, MS, NC, PA, SC, TN, TX, VA, and WV.

**Broilers: Production, Price, and Value  
by State and Total, 2000<sup>1 2</sup>**

State	Number Produced	Pounds Produced	Price per Pound <sup>3</sup>	Value of Production
	<i>1,000 Head</i>	<i>1,000 Pounds</i>	<i>Dollars</i>	<i>1,000 Dollars</i>
AL	1,038,700	5,297,400	0.330	1,748,142
AR	1,191,700	5,839,300	0.330	1,926,969
DE	247,700	1,461,400	0.340	496,876
FL	119,900	647,500	0.350	226,625
GA	1,229,700	6,148,500	0.330	2,029,005
HI	900	3,700	0.545	2,017
KY	230,000	1,150,000	0.330	379,500
MD	283,300	1,359,800	0.340	462,332
MN	44,200	221,000	0.330	72,930
MS	739,900	3,699,500	0.330	1,220,835
NE	3,400	19,000	0.330	6,270
NY	2,100	11,800	0.360	4,248
NC	698,400	4,050,700	0.350	1,417,745
OH	45,700	223,900	0.330	73,887
OK	223,100	1,093,200	0.330	360,756
PA	133,300	693,200	0.350	242,620
SC	196,800	1,003,700	0.330	331,221
TN	151,300	696,000	0.330	229,680
TX	551,000	2,589,700	0.340	880,498
VA	264,900	1,298,000	0.340	441,320
WV	91,300	365,200	0.340	124,168
WI	32,800	147,600	0.340	50,184
Oth Sts <sup>4</sup>	763,600	3,606,000	0.350	1,261,596
Total <sup>5</sup>	8,283,700	41,626,100	0.336	13,989,424
15 Weekly Sts <sup>6</sup>	7,186,500	36,417,800	0.336	12,247,159

<sup>1</sup> December 1, 1999, through November 30, 2000.

<sup>2</sup> Broiler production including other domestic meat-type breeds.

<sup>3</sup> Liveweight equivalent prices, derived from ready-to-cook (RTC) prices using the following formulas: RTC price minus processing cost X (dressing percentage) = liveweight equivalent price.

<sup>4</sup> CA, IN, IA, LA, MI, MO, OR, and WA, combined to avoid disclosing individual operations.

<sup>5</sup> Excludes States producing less than 500,000 birds.

<sup>6</sup> 15 States in the weekly estimating program: AL, AR, CA, DE, FL, GA, MD, MS, NC, PA, SC, TN, TX, VA, and WV.

**Broilers: Production, Price, and Value  
by State and Total, 2001<sup>1 2</sup>**

State	Number Produced	Pounds Produced	Price per Pound <sup>3</sup>	Value of Production
	<i>1,000 Head</i>	<i>1,000 Pounds</i>	<i>Dollars</i>	<i>1,000 Dollars</i>
AL	1,007,600	5,138,800	0.390	2,004,132
AR	1,170,900	5,737,400	0.390	2,237,586
DE	257,700	1,494,700	0.400	597,880
FL	115,300	634,200	0.400	253,680
GA	1,247,300	6,236,500	0.390	2,432,235
HI	890	3,700	0.545	2,017
KY	253,400	1,292,300	0.390	503,997
MD	287,800	1,381,400	0.400	552,560
MN	43,900	219,500	0.390	85,605
MS	765,300	3,826,500	0.390	1,492,335
NE	3,400	18,000	0.390	7,020
NY	2,300	12,200	0.410	5,002
NC	712,300	4,202,600	0.400	1,681,040
OH	40,100	212,500	0.390	82,875
OK	226,800	1,111,300	0.390	433,407
PA	132,300	701,200	0.410	287,492
SC	198,000	1,049,400	0.390	409,266
TN	198,300	932,000	0.390	363,480
TX	565,500	2,714,400	0.390	1,058,616
VA	271,500	1,330,400	0.390	518,856
WV	89,800	368,200	0.390	143,598
WI	31,300	137,700	0.390	53,703
Oth Sts <sup>4</sup>	768,080	3,697,500	0.403	1,489,707
Total <sup>5</sup>	8,389,770	42,452,400	0.393	16,696,089
15 Weekly Sts <sup>6</sup>	7,268,000	37,014,500	0.393	14,564,812

<sup>1</sup> December 1, 2000, through November 30, 2001.

<sup>2</sup> Broiler production including other domestic meat-type breeds.

<sup>3</sup> Liveweight equivalent prices, derived from ready-to-cook (RTC) prices using the following formulas: RTC price minus processing cost X (dressing percentage) = liveweight equivalent price.

<sup>4</sup> CA, IN, IA, LA, MI, MO, OR, and WA, combined to avoid disclosing individual operations.

<sup>5</sup> Excludes States producing less than 500,000 birds.

<sup>6</sup> 15 States in the weekly estimating program: AL, AR, CA, DE, FL, GA, MD, MS, NC, PA, SC, TN, TX, VA, and WV.

**Broilers: Production, Price, and Value  
by State and Total, 2002<sup>1 2</sup>**

State	Number Produced	Pounds Produced	Price per Pound <sup>3</sup>	Value of Production
	<i>1,000 Head</i>	<i>1,000 Pounds</i>	<i>Dollars</i>	<i>1,000 Dollars</i>
AL	1,051,300	5,361,600	0.300	1,608,480
AR	1,186,300	5,812,900	0.300	1,743,870
DE	257,400	1,544,400	0.320	494,208
FL	114,700	630,900	0.310	195,579
GA	1,290,500	6,452,500	0.300	1,935,750
HI	880	3,500	0.555	1,943
KY	269,900	1,403,500	0.300	421,050
MD	292,900	1,376,600	0.320	440,512
MN	44,200	229,800	0.300	68,940
MS	769,500	4,078,400	0.300	1,223,520
NE	3,700	20,700	0.300	6,210
NY	2,900	16,000	0.330	5,280
NC	735,200	4,411,200	0.310	1,367,472
OH	39,000	214,500	0.300	64,350
OK	232,800	1,140,700	0.300	342,210
PA	133,200	706,000	0.320	225,920
SC	192,900	1,080,200	0.300	324,060
TN	186,400	894,700	0.300	268,410
TX	588,100	2,881,700	0.310	893,327
VA	265,500	1,301,000	0.300	390,300
WV	89,700	358,800	0.300	107,640
WI	33,800	145,300	0.300	43,590
Oth Sts <sup>4</sup>	810,300	3,993,800	0.317	1,264,724
Total <sup>5</sup>	8,591,080	44,058,700	0.305	13,437,345
19 Weekly Sts <sup>6</sup>	8,364,700	42,929,500	0.305	13,083,812

<sup>1</sup> December 1, 2001, through November 30, 2002.

<sup>2</sup> Broiler production including other domestic meat-type strains.

<sup>3</sup> Live weight equivalent prices, derived from ready-to-cook (RTC) prices using the following formulas: RTC price minus processing cost X (dressing percentage) = live weight equivalent price.

<sup>4</sup> CA, IN, IA, LA, MI, MO, OR, & WA, combined to avoid disclosing individual operations.

<sup>5</sup> Excludes States producing less than 500,000 broilers.

<sup>6</sup> 19 states in the weekly estimating program: AL, AR, CA, DE, FL, GA, KY, LA, MD, MO, MS, NC, OK, PA, SC, TN, TX, VA and WV.

**Turkeys: Production, Price, and Value,  
by State and United States, 1998**

State	Number Raised <sup>1</sup>	Pounds Produced	Price per Pound <sup>2</sup>	Value of Production
	<i>1,000 Head</i>	<i>1,000 Pounds</i>	<i>Dollars</i>	<i>1,000 Dollars</i>
AR	28,000	495,600	0.40	198,240
CA	19,000	442,700	0.41	181,507
CT	5	130	1.00	130
IL	3,200	80,960	0.39	31,574
IN	13,500	352,350	0.39	137,417
MD & DE	600	15,000	0.43	6,450
MA	81	2,066	1.25	2,583
MN	44,500	1,027,950	0.35	359,783
MO	22,000	598,400	0.40	239,360
NH	14	336	1.40	470
NJ	71	1,512	0.80	1,210
NY	500	11,950	0.40	4,780
NC	50,000	1,270,000	0.37	469,900
ND	1,800	41,580	0.35	14,553
OH	5,500	178,750	0.33	58,988
PA	10,500	233,100	0.38	88,578
SC	10,600	356,160	0.38	135,341
SD	3,800	123,120	0.35	43,092
VT	41	984	1.04	1,023
VA	26,000	533,000	0.39	207,870
WV	4,300	88,150	0.39	34,379
Oth Sts <sup>3</sup>	41,591	1,208,127	0.39	466,245
US	285,603	7,061,925	0.380	2,683,473

<sup>1</sup> Based on turkeys placed September 1, 1997 through August 31, 1998. Excludes young turkeys lost.

<sup>2</sup> IA and MN are actual live weight prices. All other States are equivalent live weight returns to producers.

<sup>3</sup> CO, GA, IA, KS, MI, NE, OK, OR, TX, UT, and WI combined to avoid disclosing individual operations.

**Turkeys: Production, Price, and Value,  
by State and United States, 1999**

State	Number Raised <sup>1</sup>	Pounds Produced	Price per Pound <sup>2</sup>	Value of Production
	<i>1,000 Head</i>	<i>1,000 Pounds</i>	<i>Dollars</i>	<i>1,000 Dollars</i>
AR	27,000	491,400	0.44	216,216
CA	17,500	428,750	0.45	192,938
CT	5	125	1.12	140
DE	4	100	0.43	43
IL	2,900	80,910	0.41	33,173
IN	13,500	376,650	0.41	154,427
IA	7,500	224,250	0.36	80,730
MD	600	15,000	0.43	6,450
MA	78	2,067	1.28	2,646
MI	2,700	85,590	0.41	35,092
MN	43,500	1,065,750	0.35	373,013
MO	22,000	616,000	0.45	277,200
NH	15	360	1.40	504
NJ	50	1,090	0.72	785
NY	490	11,907	0.44	5,239
NC	44,000	1,069,200	0.42	449,064
ND	1,800	44,100	0.35	15,435
OH	4,700	172,020	0.35	60,207
PA	9,800	222,460	0.42	93,433
SC	9,500	325,850	0.42	136,857
SD	4,200	136,500	0.35	47,775
VT	41	943	1.13	1,066
VA	24,000	525,600	0.42	220,752
WV	4,500	95,400	0.43	41,022
Oth Sts <sup>3</sup>	29,809	885,377	0.41	362,423
US	270,192	6,877,399	0.408	2,806,630

<sup>1</sup> Based on turkeys placed September 1, 1998 through August 31, 1999. Excludes young turkeys lost.

<sup>2</sup> IA and MN are actual live weight prices. All other States are equivalent live weight returns to producers.

<sup>3</sup> CO, KS, NE, OK, OR, TX, UT, and WI combined to avoid disclosing individual operations.



**Turkeys: Production, Price, and Value,  
by State and United States, 2000**

State	Number Raised <sup>1</sup>	Pounds Produced	Price per Pound <sup>2</sup>	Value of Production
	<i>1,000 Head</i>	<i>1,000 Pounds</i>	<i>Dollars</i>	<i>1,000 Dollars</i>
AR	28,000	498,400	0.44	219,296
CA	18,000	439,200	0.48	210,816
CT	5	125	1.19	149
DE	4	120	0.43	52
IL	2,900	82,360	0.41	33,768
IN	13,500	383,400	0.41	157,194
IA	7,800	235,560	0.34	80,090
MD	440	15,400	0.43	6,622
MA	79	1,975	1.33	2,627
MI	3,500	119,000	0.34	40,460
MN	43,500	1,061,400	0.34	360,876
MO	23,000	618,700	0.44	272,228
NH	14	350	1.49	522
NJ	59	1,227	0.79	969
NY	510	12,393	0.43	5,329
NC	41,000	1,033,200	0.42	433,944
ND	1,900	46,360	0.36	16,690
OH	4,400	165,000	0.36	59,400
PA	9,300	207,390	0.45	93,326
SC	9,900	334,620	0.42	140,540
SD	4,300	141,470	0.34	48,100
VT	47	1,175	1.20	1,410
VA	25,500	553,350	0.43	237,941
WV	4,100	88,970	0.43	38,257
Oth Sts <sup>3</sup>	28,708	918,688	0.40	367,883
US	270,466	6,959,833	0.406	2,828,489

<sup>1</sup> Based on turkeys placed September 1, 1999 through August 31, 2000. Excludes young turkeys lost.

<sup>2</sup> AR, CA, IL, IN, IA, MO, NY, NC, SC, VA and WV prices are equivalent live weight returns to producers. All other States are actual live weight prices.

<sup>3</sup> CO, KS, NE, OK, OR, TX, UT, and WI combined to avoid disclosing individual operations.

**Turkeys: Production, Price, and Value,  
by State and United States, 2001**

State	Number Raised <sup>1</sup>	Pounds Produced	Price per Pound <sup>2</sup>	Value of Production
	<i>1,000 Head</i>	<i>1,000 Pounds</i>	<i>Dollars</i>	<i>1,000 Dollars</i>
AR	27,000	472,500	0.40	189,000
CA	18,700	450,670	0.47	211,815
CT	5	108	1.13	122
DE	4	109	0.39	43
IL	2,900	82,650	0.38	31,407
IN	14,000	399,000	0.38	151,620
IA	7,700	234,850	0.35	82,198
MD	460	15,042	0.39	5,866
MA	74	1,591	1.44	2,291
MI	4,500	162,000	0.35	56,700
MN	44,000	1,100,000	0.35	385,000
MO	24,000	660,000	0.41	270,600
NH	6	129	1.47	190
NJ	44	893	0.80	714
NY	510	11,067	0.41	4,537
NC	43,000	1,130,900	0.40	452,360
ND	1,600	42,080	0.35	14,728
OH	4,800	181,440	0.35	63,504
PA	9,500	213,750	0.46	98,325
SC	9,200	325,680	0.39	127,015
SD	4,900	166,110	0.35	58,139
VT	49	1,054	1.40	1,476
VA	24,000	530,400	0.39	206,856
WV	4,100	90,610	0.39	35,338
Oth Sts <sup>3</sup>	27,608	900,478	0.39	346,977
US	272,660	7,173,111	0.390	2,796,821

<sup>1</sup> Based on turkeys placed September 1, 2000, through August 31, 2001. Excludes young turkeys lost.

<sup>2</sup> AR, CA, IL, IN, IA, MO, NY, NC, SC, VA and WV prices are equivalent live weight returns to producers. All other States are actual live weight prices.

<sup>3</sup> CO, KS, NE, OK, OR, TX, UT, and WI combined to avoid disclosing individual operations.

**Turkeys: Production, Price, and Value,  
by State and United States, 2002**

State	Number Raised <sup>1</sup>	Pounds Produced	Price per Pound <sup>2</sup>	Value of Production
	<i>1,000 Head</i>	<i>1,000 Pounds</i>	<i>Dollars</i>	<i>1,000 Dollars</i>
AR	29,500	522,150	0.38	198,417
CA	17,700	438,960	0.36	158,026
CT	7	174	1.27	221
DE	3	94	0.37	35
IL	2,900	89,900	0.36	32,364
IN	13,000	403,000	0.36	145,080
IA	8,400	261,240	0.36	94,046
MD	480	15,648	0.37	5,790
MA	68	1,686	1.50	2,529
MI	4,800	179,520	0.35	62,832
MN	44,000	1,148,400	0.36	413,424
MO	25,500	782,850	0.36	281,826
NH	5	124	1.59	197
NJ	34	697	0.79	551
NY	520	12,220	0.37	4,521
NC	45,500	1,160,250	0.37	429,293
ND	1,900	49,590	0.33	16,365
OH	5,700	218,880	0.35	76,608
PA	9,900	233,640	0.39	91,120
SC	9,900	369,270	0.37	136,630
SD	4,800	158,880	0.35	55,608
VT	53	1,314	1.37	1,800
VA	20,000	446,000	0.37	165,020
WV	4,000	89,200	0.37	33,004
Oth Sts <sup>3</sup>	26,807	911,174	0.36	327,174
US	275,477	7,494,861	0.365	2,732,481

<sup>1</sup> Based on turkeys placed September 1, 2001 through August 31, 2002. Excludes young turkeys lost.

<sup>2</sup> CT, MA, MI, NH, NJ, ND, PA, UT and VT are actual live weight prices. All other States are equivalent live weight returns to producers.

<sup>3</sup> CO, KS, NE, OK, OR, TX, UT, and WI combined to avoid disclosing individual operations.

**Eggs: Production, Price, and Value by State  
and United States, 1998-99 <sup>1</sup>**

State	Eggs Produced		Price per Dozen <sup>2</sup>		Value of Production	
	1998	1999	1998	1999	1998	1999
	<i>Million</i>	<i>Million</i>	<i>Dollars</i>	<i>Dollars</i>	<i>1,000 Dollars</i>	<i>1,000 Dollars</i>
AL	2,507	2,450	1.030	1.230	215,554	250,970
AR	3,233	3,458	1.140	1.110	307,620	319,103
CA	6,608	6,606	0.561	0.479	309,019	263,663
CO	945	921	0.671	0.636	52,833	48,783
CT	839	828	0.589	0.578	41,150	39,877
DE	92	257	1.380	0.713	10,543	15,266
FL	2,539	2,776	0.535	0.465	113,182	107,665
GA	5,126	5,176	0.880	0.879	376,104	379,339
HI	154.4	149.0	0.872	0.870	11,216	10,800
ID	248	255	0.696	0.620	14,389	13,178
IL	838	876	0.618	0.472	43,148	34,477
IN	5,831	5,838	0.588	0.517	285,868	251,326
IA	5,969	6,942	0.452	0.379	224,758	219,393
KY	863	922	0.725	0.785	52,131	60,343
LA	475	481	0.848	0.811	33,548	32,500
ME	1,373	1,373	0.630	0.621	72,071	71,000
MD	867	897	0.697	0.599	50,345	44,765
MA	138	108	0.646	0.661	7,428	5,948
MI	1,423	1,562	0.496	0.420	58,875	54,627
MN	3,152	3,138	0.483	0.438	126,959	114,481
MS	1,555	1,569	1.220	1.210	158,306	158,643
MO	1,732	1,690	0.531	0.516	76,636	72,677
MT	84	91	0.550	0.430	3,850	3,261
NE	2,706	2,837	0.432	0.395	97,376	93,427
NH	47	39	0.668	0.778	2,618	2,527
NJ	488	547	0.570	0.556	23,178	25,339
NY	986	1,017	0.624	0.556	51,261	47,128
NC	2,555	2,587	1.090	1.070	231,053	229,603
OH	7,446	8,193	0.570	0.517	353,816	352,950
OK	927	945	0.780	0.876	60,257	68,963
OR	758	775	0.586	0.499	37,027	32,215
PA	5,983	6,135	0.613	0.541	305,686	276,355
SC	1,189	1,215	0.696	0.644	68,982	65,167
SD	618	592	0.430	0.373	22,145	18,413
TN	299	274	0.926	1.170	23,062	26,625
TX	4,257	4,413	0.715	0.654	253,554	240,359
UT	478	521	0.520	0.443	20,707	19,238
VT	60	62	0.663	0.651	3,314	3,361
VA	860	845	0.933	0.885	66,888	62,326
WA	1,393	1,307	0.594	0.542	68,979	59,041
WV	244	240	1.240	1.250	25,179	25,037
WI	1,030	1,031	0.514	0.416	44,135	35,736
WY	3.6	3.6	0.570	0.470	171	141
Oth Sts <sup>3</sup>	861	1,008	0.505	0.432	36,218	36,335
US <sup>4</sup>	79,777	82,946	0.668	0.621	4,441,139	4,292,371

<sup>1</sup> Estimates cover the 12 month period Dec 1, previous year through Nov 30.

<sup>2</sup> Average of all eggs, including hatching eggs.

<sup>3</sup> AK, AZ, KS, ND, NM, NV, and RI combined to avoid disclosure of individual operations.

<sup>4</sup> States may not add to U.S. total due to rounding.

**Eggs: Production, Price, and Value  
by State and United States, 2000-01 <sup>1</sup>**

State	Eggs Produced		Price per Dozen <sup>2</sup>		Value of Production	
	2000	2001	2000	2001	2000	2001
	<i>Million</i>	<i>Million</i>	<i>Dollars</i>	<i>Dollars</i>	<i>1,000 Dollars</i>	<i>1,000 Dollars</i>
AL	2,378	2,359	1.310	1.350	258,788	265,973
AR	3,559	3,431	1.060	1.060	315,604	303,952
CA	6,319	6,082	0.453	0.471	238,796	238,951
CO	988	946	0.697	0.612	57,347	48,255
CT	866	884	0.555	0.568	40,042	41,833
DE	386	369	0.670	0.676	21,542	20,796
FL	2,724	2,737	0.479	0.536	108,668	122,328
GA	5,128	5,086	0.868	0.868	370,831	368,073
HI	143.4	129.4	0.890	0.894	10,639	9,637
ID	249	251	0.611	0.586	12,678	12,254
IL	944	888	0.472	0.486	37,136	35,958
IN	6,098	6,025	0.516	0.515	262,098	258,408
IA	7,755	8,891	0.383	0.390	247,307	288,640
KY	940	933	0.904	0.935	70,851	72,688
LA	493	480	0.810	0.793	33,275	31,733
ME	1,137	1,103	0.595	0.617	56,380	56,679
MD	871	901	0.596	0.604	43,233	45,378
MA	93	80	0.629	0.657	4,873	4,383
MI	1,646	1,706	0.420	0.438	57,619	62,201
MN	3,271	3,112	0.428	0.435	116,755	112,923
MS	1,581	1,550	1.180	1.260	154,986	162,723
MO	1,614	1,791	0.520	0.507	69,975	75,688
MT	84	95	0.460	0.410	3,220	3,246
NE	2,999	3,001	0.375	0.382	93,773	95,638
NH	45	49	0.750	0.753	2,814	3,076
NJ	574	556	0.527	0.531	25,188	24,626
NY	1,113	1,143	0.564	0.567	52,325	53,990
NC	2,509	2,535	1.070	1.100	223,810	233,241
OH	8,163	7,900	0.503	0.491	342,150	323,157
OK	931	926	0.838	0.843	64,977	65,043
OR	805	818	0.482	0.600	32,325	40,878
PA	6,309	6,662	0.545	0.547	286,402	303,470
SC	1,245	1,416	0.642	0.674	66,612	79,518
SD	585	575	0.354	0.350	17,236	16,767
TN	278	294	1.240	1.300	28,640	31,868
TX	4,423	4,734	0.697	0.677	256,961	267,237
UT	712	865	0.434	0.440	25,756	31,717
VT	64	58	0.635	0.665	3,387	3,213
VA	824	766	0.963	0.961	66,093	61,368
WA	1,306	1,339	0.551	0.561	59,985	62,544
WV	252	235	1.450	1.410	30,379	27,575
WI	1,225	1,235	0.479	0.500	48,878	51,407
WY	3.6	3.6	0.550	0.560	165	168
Oth Sts <sup>3</sup>	1,088	1,157	0.421	0.431	38,149	41,500
US <sup>4</sup>	84,717	86,093	0.617	0.622	4,358,648	4,460,701

<sup>1</sup> Estimates cover the 12 month period Dec 1, previous year through Nov 30.

<sup>2</sup> Average of all eggs, including hatching eggs.

<sup>3</sup> AK, AZ, KS, ND, NM, NV, and RI combined to avoid disclosure of individual operations.

<sup>4</sup> States may not add to U.S. total due to rounding.

**Eggs: Production, Price, and Value by State  
and United States, 2002**

State	Eggs Produced	Price per Dozen <sup>2</sup>	Value of Production
	2002	2002	2002
	<i>Million</i>	<i>Dollars</i>	<i>1,000 Dollars</i>
AL	2,281	1.560	295,896
AR	3,333	1.070	298,444
CA	6,257	0.392	204,175
CO	1,008	0.591	49,672
CT	856	0.519	37,019
DE	347	0.606	17,514
FL	2,731	0.479	109,099
GA	4,967	0.860	356,065
HI	117.5	0.904	8,854
ID	242	0.576	11,617
IL	893	0.442	32,864
IN	5,973	0.479	238,197
IA	10,101	0.342	288,256
KY	940	0.837	65,591
LA	494	0.817	33,615
ME	1,080	0.590	53,141
MD	923	0.563	43,306
MA	89	0.629	4,668
MI	1,880	0.403	63,059
MN	3,159	0.408	107,423
MS	1,588	1.240	164,036
MO	1,841	0.497	76,176
MT	104	0.460	3,987
NE	2,977	0.341	84,514
NH	55	0.731	3,349
NJ	534	0.512	22,800
NY	1,100	0.489	44,842
NC	2,518	1.090	229,145
OH	7,940	0.447	295,597
OK	951	0.832	65,945
OR	760	0.536	33,934
PA	6,520	0.514	279,025
SC	1,380	0.626	72,036
SD	568	0.332	15,692
TN	300	1.270	31,667
TX	4,774	0.687	273,443
UT	894	0.420	31,286
VT	58	0.626	3,038
VA	734	0.988	60,426
WA	1,369	0.486	55,460
WV	262	1.400	30,602
WI	1,158	0.511	49,318
WY	3.6	0.487	146
Oth Sts <sup>3</sup>	1,192	0.403	39,991
US <sup>4</sup>	87,252	0.589	4,284,930

<sup>1</sup> Estimates cover the 12 month period Dec 1, previous year through Nov 30.

<sup>2</sup> Average of all eggs, including hatching eggs.

<sup>3</sup> AK, AZ, KS, ND, NM, NV, and RI combined to avoid disclosure of individual operations.

<sup>4</sup> States may not add to U.S. total due to rounding.

**Chickens: Lost, Sold for Slaughter, Price, and Value  
by State and United States, 1998 <sup>1</sup>**

State	Number Lost <sup>2</sup>	Number Sold for Slaughter	Pounds Sold	Price per Pound	Value of Sales
	<i>1,000 Head</i>	<i>1,000 Head</i>	<i>1,000 Pounds</i>	<i>Dollars</i>	<i>1,000 Dollars</i>
AL	1,750	9,200	65,320	0.175	11,431
AR	3,264	13,326	97,280	0.096	9,339
CA	3,373	13,808	48,328	0.034	1,643
CO	550	2,170	9,331	0.030	280
CT	562	2,345	8,677	0.017	148
DE	59	313	1,878	0.139	261
FL	2,570	4,784	19,136	0.059	1,129
GA	2,806	17,022	119,154	0.170	20,256
HI	196	236	779	0.151	118
ID	86	508	1,930	0.036	69
IL	322	2,173	8,040	0.027	217
IN	3,200	12,200	41,480	0.020	830
IA	4,339	10,907	37,084	0.024	890
KY	449	1,787	11,258	0.113	1,272
LA	241	1,087	6,305	0.069	435
ME	530	3,485	13,243	0.017	225
MD	822	1,932	8,308	0.063	523
MA	58	410	1,558	0.017	26
MI	466	3,086	12,653	0.027	342
MN	2,300	6,100	21,960	0.026	571
MS	1,460	5,702	41,625	0.174	7,243
MO	820	5,004	22,018	0.096	2,114
MT	38	192	768	0.020	15
NE	1,900	5,530	22,120	0.024	531
NH	25	134	630	0.017	11
NJ	152	725	2,465	0.036	89
NY	327	3,041	13,380	0.021	281
NC	1,800	11,176	78,232	0.070	5,476
OH	4,127	16,835	60,606	0.024	1,455
OK	876	3,101	19,226	0.096	1,846
OR	291	1,355	4,607	0.010	46
PA	5,200	12,935	46,566	0.073	3,399
SC	1,036	2,644	13,484	0.111	1,497
SD	635	900	3,420	0.020	68
TN	210	1,090	7,194	0.133	957
TX	3,681	10,917	53,493	0.039	2,086
UT	164	1,021	4,084	0.030	123
VT	15	185	758	0.016	12
VA	509	3,177	19,697	0.070	1,379
WA	648	3,209	10,911	0.020	218
WV	222	1,024	5,018	0.130	652
WI	843	1,853	7,597	0.051	387
WY	1	11	37	0.050	2
Oth Sts <sup>3</sup>	505	1,646	5,422	0.017	95
US	53,428	200,286	977,060	0.081	79,987

<sup>1</sup> Estimates cover the 12 month period Dec 1, previous year through Nov 30 and excludes broilers.

<sup>2</sup> Includes rendered, died, destroyed, composted or disappeared for any reason during the 12-month period.

<sup>3</sup> AK, AZ, KS, ND, NM, NV, and RI combined to avoid disclosing individual operations.

**Chickens: Lost, Sold for Slaughter, Price, and Value  
by State and United States, 1999 <sup>1</sup>**

State	Number Lost <sup>2</sup>	Number Sold for Slaughter	Pounds Sold	Price per Pound	Value of Sales
	<i>1,000 Head</i>	<i>1,000 Head</i>	<i>1,000 Pounds</i>	<i>Dollars</i>	<i>1,000 Dollars</i>
AL	2,100	8,800	65,120	0.142	9,247
AR	4,055	14,876	108,595	0.101	10,968
CA	4,070	13,807	49,705	0.040	1,988
CO	467	2,494	11,223	0.040	449
CT	424	2,314	8,562	0.005	43
DE	127	252	1,588	0.107	170
FL	2,138	4,725	17,483	0.028	490
GA	3,685	21,270	155,271	0.110	17,080
HI	121	212	700	0.181	127
ID	78	509	1,985	0.025	50
IL	379	1,990	6,766	0.010	68
IN	2,314	12,442	42,303	0.020	846
IA	5,878	11,391	38,729	0.011	426
KY	666	2,400	14,880	0.104	1,548
LA	272	1,375	7,838	0.068	533
ME	723	3,703	14,442	0.005	72
MD	408	1,740	7,134	0.078	556
MA	43	377	1,433	0.003	4
MI	569	3,294	11,200	0.020	224
MN	1,700	6,200	21,700	0.011	239
MS	1,535	8,140	57,794	0.141	8,149
MO	1,036	4,148	18,251	0.050	913
MT	35	216	864	0.020	17
NE	2,342	5,182	17,101	0.011	188
NH	17	135	729	0.070	51
NJ	743	643	2,186	0.036	79
NY	320	2,788	10,316	0.005	52
NC	1,871	11,109	79,985	0.080	6,399
OH	4,154	18,082	63,287	0.010	633
OK	802	3,585	21,152	0.101	2,136
OR	301	1,600	5,440	0.010	54
PA	4,679	13,328	47,981	0.075	3,599
SC	636	3,146	15,101	0.082	1,238
SD	686	806	2,418	0.010	24
TN	183	1,414	9,615	0.127	1,221
TX	2,853	12,922	60,733	0.037	2,247
UT	177	1,116	4,464	0.033	147
VT	22	177	655	0.002	1
VA	406	3,182	19,728	0.080	1,578
WA	643	3,094	10,520	0.010	105
WV	194	1,251	9,383	0.100	938
WI	652	2,234	9,159	0.027	247
WY	1	11	37	0.050	2
Oth Sts <sup>3</sup>	446	1,583	5,597	0.012	71
US	54,951	214,063	1,059,153	0.071	75,217

<sup>1</sup> Estimates cover the 12 month period Dec 1, previous year through Nov 30 and excludes broilers.

<sup>2</sup> Includes rendered, died, destroyed, composted or disappeared for any reason during the 12-month period.

<sup>3</sup> AK, AZ, KS, ND, NM, NV, and RI combined to avoid disclosing individual operations.



**Chickens: Lost, Sold for Slaughter, Price, and Value  
by State and United States, 2000 <sup>1</sup>**

State	Number Lost <sup>2</sup>	Number Sold for Slaughter	Pounds Sold	Price per Pound	Value of Sales
	<i>1,000 Head</i>	<i>1,000 Head</i>	<i>1,000 Pounds</i>	<i>Dollars</i>	<i>1,000 Dollars</i>
AL	2,300	8,800	66,880	0.067	4,481
AR	3,395	14,880	102,672	0.080	8,214
CA	3,167	13,232	48,958	0.040	1,958
CO	455	2,310	9,471	0.030	284
CT	288	2,190	8,322	0.005	42
DE	135	984	5,904	0.051	301
FL	2,718	2,978	12,508	0.054	675
GA	3,665	22,437	166,034	0.127	21,086
HI	116	160	528	0.186	98
ID	96	524	2,044	0.020	41
IL	338	1,604	5,454	0.010	55
IN	2,091	9,680	32,912	0.010	329
IA	5,126	13,357	61,442	0.002	123
KY	761	2,800	16,240	0.053	861
LA	269	1,607	9,160	0.056	513
ME	532	3,373	13,155	0.004	53
MD	369	1,935	9,675	0.075	726
MA	26	272	1,061	0.004	4
MI	624	3,295	11,533	0.040	461
MN	1,500	6,277	22,597	0.002	45
MS	1,255	7,395	53,244	0.060	3,195
MO	755	5,797	26,087	0.050	1,304
MT	38	222	777	0.015	12
NE	2,372	6,193	21,056	0.002	42
NH	13	131	668	0.036	24
NJ	183	1,010	3,535	0.070	247
NY	360	2,474	10,638	0.010	106
NC	1,324	12,750	95,625	0.063	6,024
OH	5,595	19,112	64,981	0.004	260
OK	749	3,235	19,410	0.080	1,553
OR	294	1,250	6,500	0.010	65
PA	2,367	12,900	46,440	0.075	3,483
SC	608	3,858	22,762	0.074	1,684
SD	693	773	2,319	0.003	7
TN	186	1,099	7,583	0.081	614
TX	3,312	14,520	68,244	0.042	2,866
UT	198	1,088	4,352	0.020	87
VT	18	235	940	0.009	8
VA	398	3,243	18,485	0.065	1,202
WA	671	2,683	9,122	0.010	91
WV	159	1,406	7,311	0.065	475
WI	786	2,052	8,003	0.017	136
WY	1	12	41	0.050	2
Oth Sts <sup>3</sup>	601	2,278	7,931	0.019	151
US	50,907	218,411	1,112,604	0.057	63,988

<sup>1</sup> Estimates cover the 12 month period Dec 1, previous year through Nov 30 and excludes broilers.

<sup>2</sup> Includes rendered, died, destroyed, composted or disappeared for any reason during the 12-month period.

<sup>3</sup> AK, AZ, KS, ND, NM, NV, and RI combined to avoid disclosing individual operations.

**Chickens: Lost, Sold for Slaughter, Price, and Value  
by State and United States, 2001 <sup>1</sup>**

State	Number Lost <sup>2</sup>	Number Sold for Slaughter	Pounds Sold	Price per Pound	Value of Sales
	<i>1,000 Head</i>	<i>1,000 Head</i>	<i>1,000 Pounds</i>	<i>Dollars</i>	<i>1,000 Dollars</i>
AL	1,863	8,879	64,817	0.072	4,667
AR	2,935	14,310	97,308	0.080	7,785
CA	2,886	10,835	40,090	0.010	401
CO	960	1,457	6,119	0.002	12
CT	286	2,236	8,497	0.005	42
DE	173	1,443	7,215	0.011	79
FL	2,806	2,863	11,738	0.026	305
GA	5,264	19,630	147,225	0.078	11,484
HI	145	182	655	0.169	111
ID	90	384	1,498	0.020	30
IL	391	1,915	6,511	0.010	65
IN	1,970	10,099	34,337	0.010	343
IA	6,867	11,025	44,100	0.001	44
KY	537	2,800	16,520	0.060	991
LA	212	1,308	7,456	0.060	447
ME	1,102	2,251	8,779	0.004	35
MD	334	2,444	9,776	0.010	98
MA	22	689	2,687	0.004	11
MI	889	3,725	13,038	0.010	130
MN	1,635	5,792	20,851	0.001	21
MS	1,295	6,371	45,871	0.082	3,761
MO	908	3,375	16,875	0.030	506
MT	35	109	392	0.010	4
NE	2,636	4,830	16,422	0.001	16
NH	11	227	1,294	0.039	50
NJ	168	590	2,006	0.001	2
NY	482	2,625	11,025	0.001	11
NC	1,326	12,384	95,357	0.080	7,629
OH	4,969	17,038	57,929	0.001	58
OK	733	3,250	19,500	0.050	975
OR	348	1,227	4,417	0.001	4
PA	2,495	14,983	53,939	0.010	539
SC	2,017	2,145	16,517	0.046	760
SD	874	659	2,307	0.071	164
TN	172	1,335	8,811	0.059	520
TX	2,526	14,301	68,645	0.035	2,403
UT	272	1,529	5,352	0.020	107
VT	17	113	531	0.021	11
VA	427	3,212	21,842	0.075	1,638
WA	716	2,723	9,531	0.001	10
WV	210	1,073	8,584	0.090	773
WI	1,432	1,892	7,946	0.024	191
WY	1	12	42	0.020	1
Oth Sts <sup>3</sup>	709	2,212	7,763	0.001	15
US	56,146	202,482	1,032,115	0.045	47,249

<sup>1</sup> Estimates cover the 12 month period Dec 1, previous year through Nov 30 and excludes broilers.

<sup>2</sup> Includes rendered, died, destroyed, composted or disappeared for any reason during the 12-month period.

<sup>3</sup> AK, AZ, KS, ND, NM, NV, and RI combined to avoid disclosing individual operations.

**Chickens: Lost, Sold for Slaughter, Price, and Value  
by State and United States, 2002 <sup>1</sup>**

State	Number Lost <sup>2</sup>	Number Sold for Slaughter	Pounds Sold	Price per Pound	Value of Sales
	<i>1,000 Head</i>	<i>1,000 Head</i>	<i>1,000 Pounds</i>	<i>Dollars</i>	<i>1,000 Dollars</i>
AL	1,634	9,229	70,140	0.076	5,331
AR	2,740	14,560	115,024	0.080	9,202
CA	3,106	9,954	36,830	0.008	295
CO	1,104	1,337	5,348	0.002	11
CT	276	2,127	7,870	0.003	24
DE	176	985	4,334	0.022	95
FL	2,880	4,113	16,452	0.031	510
GA	5,131	16,947	127,103	0.082	10,422
HI	118	158	569	0.179	102
ID	90	520	1,976	0.010	20
IL	442	1,329	5,316	0.015	80
IN	2,155	7,301	24,823	0.005	124
IA	7,137	12,254	42,889	0.001	43
KY	399	3,166	19,629	0.063	1,237
LA	482	1,445	8,237	0.056	461
ME	494	2,695	10,511	0.004	42
MD	338	2,345	9,146	0.010	91
MA	16	256	998	0.005	5
MI	467	3,849	13,472	0.001	13
MN	1,651	5,167	18,601	0.001	19
MS	945	7,590	54,648	0.080	4,372
MO	905	3,710	20,405	0.050	1,020
MT	37	115	414	0.010	4
NE	2,940	5,161	18,064	0.001	18
NH	12	291	1,630	0.036	59
NJ	143	1,151	3,913	0.001	4
NY	329	2,399	10,076	0.001	10
NC	1,321	13,264	102,133	0.070	7,149
OH	5,244	17,322	60,627	0.005	303
OK	809	3,570	21,420	0.080	1,714
OR	308	884	3,094	0.001	3
PA	2,014	14,694	52,898	0.010	529
SC	2,671	2,232	13,392	0.063	844
SD	740	567	1,985	0.027	54
TN	205	1,657	11,102	0.065	722
TX	2,504	12,897	63,195	0.039	2,465
UT	260	2,003	7,812	0.010	78
VT	17	211	823	0.007	6
VA	686	3,037	18,526	0.062	1,149
WA	569	2,272	7,498	0.001	7
WV	223	1,605	12,680	0.087	1,103
WI	1,049	1,733	7,105	0.022	156
WY	1	12	42	0.010	
Oth Sts <sup>3</sup>	562	1,817	6,368	0.005	35
US	55,330	199,931	1,039,118	0.048	49,931

<sup>1</sup> Estimates cover the 12 month period Dec 1, previous year through Nov 30 and excludes broilers.

<sup>2</sup> Includes rendered, died, destroyed, composted or disappeared for any reason during the 12-month period.

<sup>3</sup> AK, AZ, KS, ND, NM, NV, and RI combined to avoid disclosing individual operations.

## Statistical Bulletin Publication Schedule and other ASB Services

**Statistical Bulletins:** The National Agricultural Statistics Service will issue a series of twenty-one bulletins containing final estimates for agricultural data series based on the review of the 2002 Census of Agriculture and other information. The product number, bulletin title, and tentative release dates are as follows.

NASS-SB993	Agricultural Land Values and Cash Rents-Final Estimates 1999-2003	03/12/04
NASS-SB989	Cattle - Final Estimates 1999-2003	04/30/04
NASS-SB980	Chickens and Eggs - Final Estimates 1998-2002	04/29/04
NASS-SB997	Citrus Fruits - Final Estimates 1997-2002	08/20/04
NASS-SB999	Crop Values - Final Estimates 1997-2002	10/15/04
NASS-SB991	Farms and Land in Farms - Final Estimates 1998-2002	02/27/04
NASS-SB982	Field Crops - Final Estimates 1997-2002	03/17/04
NASS-SB986	Hogs and Pigs - Final Estimates 1998-2002	03/22/04
NASS-SB992	Honey - Final Estimates 1998-2002	04/29/04
NASS-SB1002	Livestock Operations - Final Estimates 1998-2002	04/30/04
NASS-SB995	Meat Animals, PDI - Final Estimates 1998-2002	05/21/04
NASS-SB988	Milk Cows and Production - Final Estimates 1998-2002	04/30/04
NASS-SB996	Milk Disposition and Income - Final Estimates 1998-2002	05/21/04
NASS-SB985	Noncitrus Fruits and Nuts - Final Estimates 1997-2002	05/21/04
NASS-SB998	Potatoes and Sweet Potatoes - Final Estimates 1997-2002	08/20/04
NASS-SB994	Poultry Production and Value - Final Estimates 1998-2002	04/29/04
NASS-SB984	Rice Stocks - Final Estimates 1998-2003	03/17/04
NASS-SB990	Sheep and Goats - Final Estimates 1999-2003	04/30/04
NASS-SB983	Stocks of Grains, Oilseeds, and Hay - Final Estimates 1998-2003	03/17/04
NASS-SB981	Turkeys - Final Estimates 1998-2002	04/29/04
NASS-SB987	Vegetables - Final Estimates 1997-2002	05/28/04

**Electronic Publications:** These bulletins will be available **free of charge** on the Internet from the NASS Home Page at: [www.usda.gov/nass/](http://www.usda.gov/nass/), in either text, PDF, or CSV format. From the Home Page select “Historic Data,” then “Statistical Bulletins.”

**Printed Copies:** Printed copies of the bulletins may be ordered by calling the Sales Order Desk toll free at 1-800-999-6779. Costs for printed copies of the publications range from \$15.00 to \$50.00. Visa, MasterCard, check, or money order are acceptable for payment.

**Agricultural Statistics Database - Quick Stats:** Selected State, U.S. and County information is available in an online database via the Internet **free of charge**. The database allows custom extracts based on commodity, year, state and other selection criteria and produces an output file compatible for updating databases and spreadsheets. The database can be accessed from the NASS Home Page at: [www.usda.gov/nass/](http://www.usda.gov/nass/).

**Agricultural Census Publications:** The U. S. Department of Agriculture's National Agricultural Statistics Service (NASS) released preliminary national and state data from the 2002 Census of Agriculture and final data for Puerto Rico on February 3, 2004. Census 2002 preliminary data include demographic items such as sex of operator, residence on or off the farm, days worked off farm, years present on farm, age group categories, race, and number of persons living in each household.

**Assistance:** For more information pertaining to this bulletin, call Livestock Branch at (202) 720-3570. For assistance with general agricultural statistics or further information about NASS or its products and services, contact the **Agricultural Statistics Hotline** at **1-800-727-9540**, 7:30 a.m. to 4:00 p.m. ET, or e-mail: [nass@nass.usda.gov](mailto:nass@nass.usda.gov) .

The United States Department of Agriculture (USDA) prohibits discrimination in all its programs on the basis of race, color, national origin, gender, religion, age, disability, political beliefs, sexual orientation, and marital or family status. (Not all prohibited bases apply to all programs.) Persons with disabilities who require alternative means for communication of program information (braille, large print, audiotape, etc.) should contact the USDA's TARGET Center at 202-720-2600 (voice and TDD).

To file a complaint of discrimination, write USDA, Director, Office of Civil Rights, Room 326-W, Whitten Building, 1400 Independence Avenue, SW, Washington, D.C., 20250-9410, or call 202-720-5964 (voice or TDD). USDA is an equal opportunity provider and employer.