



Chickens and Eggs

ISSN: 1948-9064

Released September 22, 2021, by the National Agricultural Statistics Service (NASS), Agricultural Statistics Board, United States Department of Agriculture (USDA).

August Egg Production Up Slightly

United States egg production totaled 9.39 billion during August 2021, up slightly from last year. Production included 8.12 billion table eggs, and 1.28 billion hatching eggs, of which 1.20 billion were broiler-type and 73.9 million were egg-type. The average number of layers during August 2021 totaled 385 million, up 1 percent from last year. August egg production per 100 layers was 2,442 eggs, down slightly from August 2020.

Total layers in the United States on September 1, 2021 totaled 385 million, up slightly from last year. The 385 million layers consisted of 320 million layers producing table or market type eggs, 62.2 million layers producing broiler-type hatching eggs, and 2.84 million layers producing egg-type hatching eggs. Rate of lay per day on September 1, 2021, averaged 78.8 eggs per 100 layers, up 1 percent from September 1, 2020.

Egg-Type Chicks Hatched Down 1 Percent

Egg-type chicks hatched during August 2021 totaled 49.7 million, down 1 percent from August 2020. Eggs in incubators totaled 45.0 million on September 1, 2021, down 5 percent from a year ago.

Domestic placements of egg-type pullet chicks for future hatchery supply flocks by leading breeders totaled 330 thousand during August 2021, down 11 percent from August 2020.

Broiler-Type Chicks Hatched Up Slightly

Broiler-type chicks hatched during August 2021 totaled 841 million, up slightly from August 2020. Eggs in incubators totaled 712 million on September 1, 2021, up 3 percent from a year ago.

Leading breeders placed 8.74 million broiler-type pullet chicks for future domestic hatchery supply flocks during August 2021, up 6 percent from August 2020.

This page intentionally left blank.

Contents

Average Layers During the Month – United States: 2020-2021.....	4
Egg Production During the Month by Type – United States: 2020-2021	4
Egg Production During the Month in Dozens by Type – United States: 2020-2021	4
Average Layers During the Month – United States	5
Total Egg Production During the Month – United States	5
Layers on Hand and Eggs Produced by Type and Molt – United States: July-August 2020 and 2021	6
Layers on Hand and Eggs Produced by Type and Molt – United States: August-September 2020 and 2021.....	7
Layers on Hand and Eggs Produced – States and United States: During July 2020 and 2021	8
Layers on Hand and Eggs Produced – States and United States: During August 2020 and 2021	9
Egg Production by Type – States and United States: July 2020 and 2021	10
Egg Production by Type – States and United States: August 2020 and 2021.....	11
Egg Production in Dozens by Type – States and United States: July 2020 and 2021	12
Egg Production in Dozens by Type – States and United States: August 2020 and 2021	13
Total Layers Molted First Day of the Month by Month – United States: 2020-2021.....	14
Total Layers Molted First Day of the Month – States and United States: August 1 and September 1, 2020-2021.....	14
Hatchery Production – United States: 2020 and 2021	15
Egg-Type Eggs in Incubators on the First of the Month – United States: 2020-2021	16
Egg-Type Chicks Hatched by Month – United States: 2020-2021	16
Intended Placements of Egg-Type Pullet Chicks for Hatchery Supply Flocks by Month and Total – United States: 2020-2022.....	17
Broiler-Type Eggs in Incubators on the First of the Month – United States: 2020-2021	17
Broiler-Type Chicks Hatched – States and United States: August 2020 and 2021	18
Broiler-Type Chicks Hatched by Month – United States: 2020-2021	18
Intended Placements of Broiler-Type Pullet Chicks for Hatchery Supply Flocks by Month and Total: 2020-2022.....	19
Terms and Definitions of Chickens and Eggs Estimates	19
Statistical Methodology	20
Information Contacts	22

Average Layers During the Month – United States: 2020-2021

[Blank data cells indicate estimation period has not yet begun]

Month	2020		2021	
	(1,000 layers)		(1,000 layers)	
December ¹		403,445		391,780
January		401,419		393,284
February		396,916		393,963
March		395,613		393,176
April		392,770		390,020
May		387,045		385,575
June		383,152		384,240
July		381,014		384,930
August		382,184		384,747
September		384,655		
October		386,660		
November		389,355		

¹ December previous year.

Egg Production During the Month by Type – United States: 2020-2021

[Blank data cells indicate estimation period has not yet begun]

Month	Total eggs		Table eggs		Hatching eggs	
	2020	2021	2020	2021	2020	2021
	(million eggs)	(million eggs)	(million eggs)	(million eggs)	(million eggs)	(million eggs)
December ¹	9,790.2	9,610.3	8,583.4	8,356.4	1,206.8	1,253.9
January	9,690.4	9,530.9	8,470.3	8,260.7	1,220.1	1,270.2
February	8,946.0	8,595.5	7,793.0	7,439.5	1,153.0	1,156.0
March	9,538.5	9,543.1	8,299.5	8,248.1	1,239.0	1,295.0
April	9,096.4	9,209.8	7,894.5	7,942.7	1,201.9	1,267.1
May	9,120.9	9,383.3	7,883.3	8,065.5	1,237.6	1,317.8
June	8,831.8	9,046.0	7,625.8	7,780.8	1,206.0	1,265.2
July	9,317.2	9,383.6	8,063.5	8,101.9	1,253.7	1,281.7
August	9,352.5	9,394.5	8,096.8	8,116.0	1,255.7	1,278.5
September	9,057.2		7,838.1		1,219.1	
October	9,505.2		8,250.4		1,254.8	
November	9,327.0		8,119.4		1,207.6	

¹ December previous year.

Egg Production During the Month in Dozens by Type – United States: 2020-2021

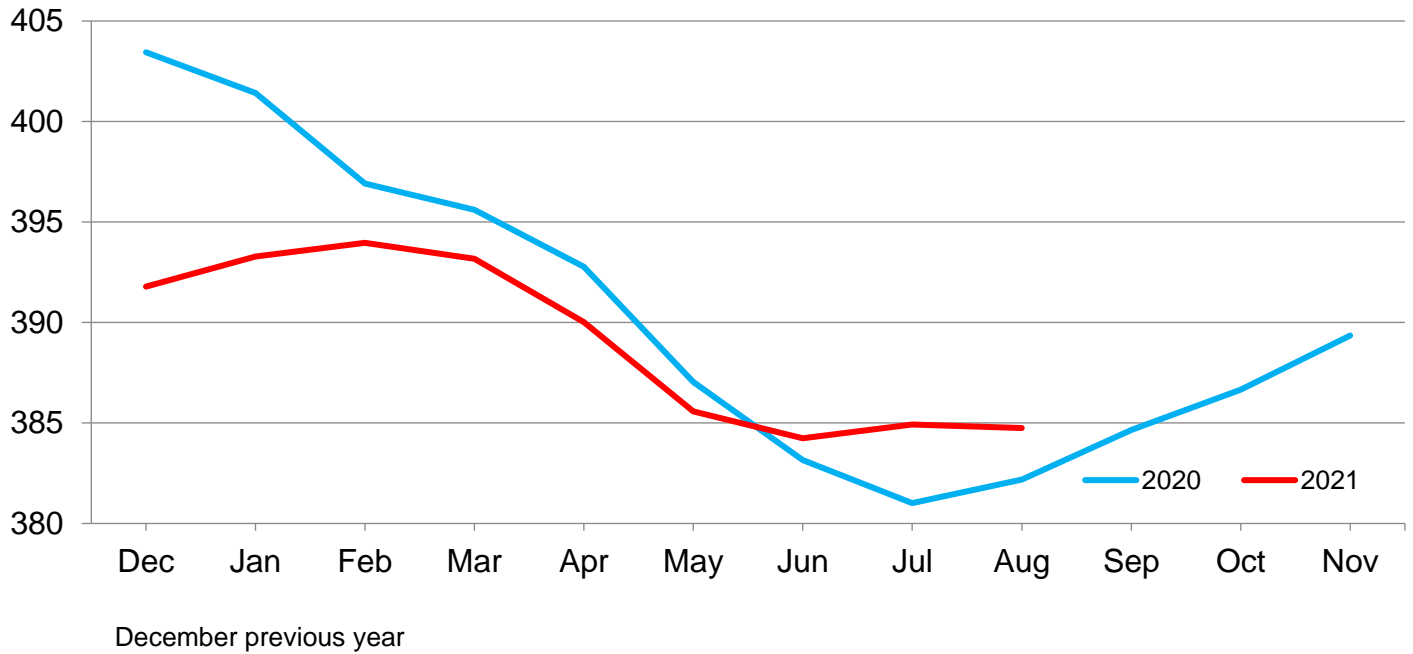
[Blank data cells indicate estimation period has not yet begun]

Month	Total eggs		Table eggs		Hatching eggs	
	2020	2021	2020	2021	2020	2021
	(1,000 dozen eggs)	(1,000 dozen eggs)	(1,000 dozen eggs)	(1,000 dozen eggs)	(1,000 dozen eggs)	(1,000 dozen eggs)
December ¹	815,849.7	800,858.2	715,283.2	696,366.6	100,566.5	104,491.6
January	807,533.2	794,241.9	705,858.4	688,391.7	101,674.8	105,850.2
February	745,499.5	716,292.5	649,416.6	619,959.1	96,082.9	96,333.4
March	794,875.2	795,258.6	691,625.0	687,341.9	103,250.2	107,916.7
April	758,032.8	767,483.9	657,874.6	661,891.7	100,158.2	105,592.2
May	760,074.7	781,941.5	656,941.5	672,124.7	103,133.2	109,816.8
June	735,983.1	753,833.5	635,483.2	648,400.1	100,499.9	105,433.4
July	776,433.5	781,966.8	671,958.2	675,158.6	104,475.3	106,808.2
August	779,375.1	782,874.9	674,733.2	676,333.3	104,641.9	106,541.6
September	754,767.0		653,175.2		101,591.8	
October	792,100.1		687,533.5		104,566.6	
November	777,250.0		676,616.6		100,633.4	

¹ December previous year.

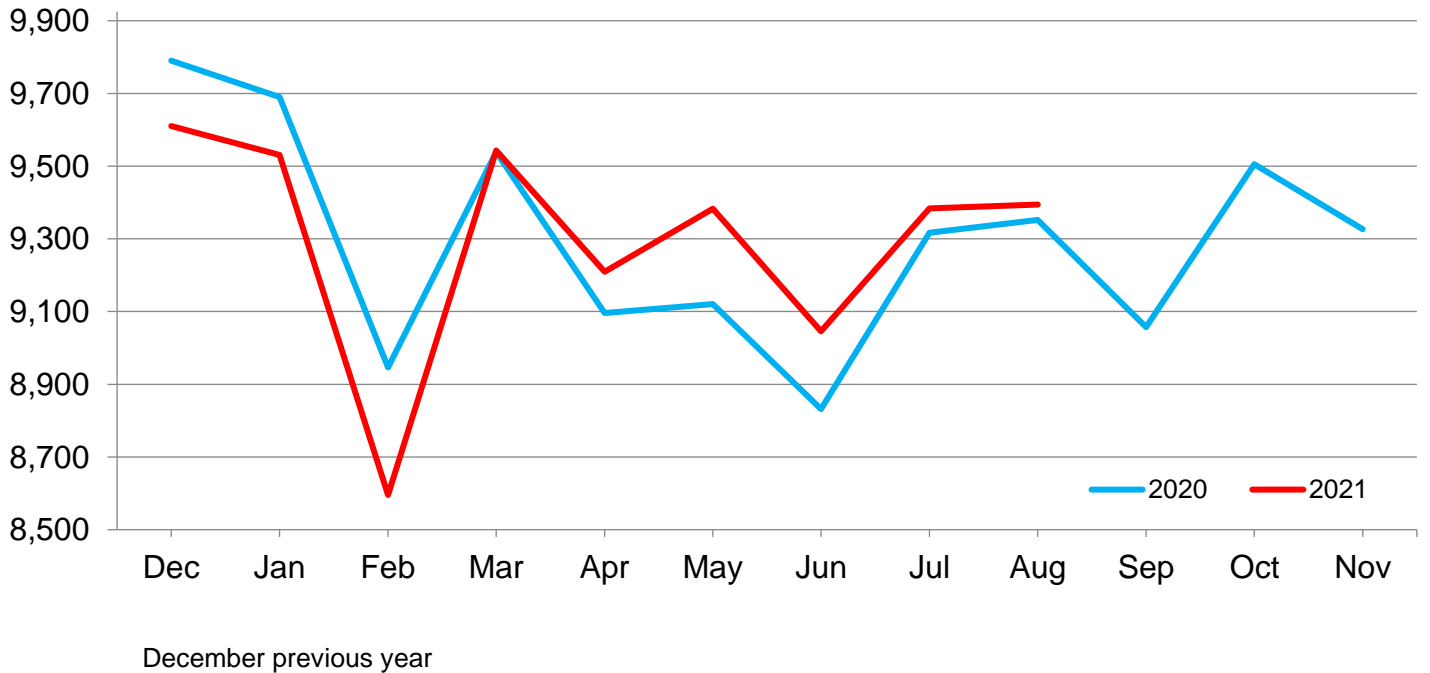
Average Layers During the Month – United States

Million layers



Total Egg Production During the Month – United States

Million eggs



Layers on Hand and Eggs Produced by Type and Molt – United States: July-August 2020 and 2021

Item	2020	2021	2021 as percent of 2020
Layers during July			
Total layers 1,000	381,014	384,930	101
Table egg type 1,000	316,729	319,072	101
Hatching egg type 1,000	64,285	65,858	102
Broiler-type hatching 1,000	60,994	62,999	103
Egg-type hatching 1,000	3,291	2,859	87
Eggs per 100 layers during July			
Total layers number	2,445	2,438	100
Table egg type number	2,546	2,539	100
Hatching egg type number	1,950	1,946	100
Broiler-type hatching number	1,919	1,916	100
Egg-type hatching number	2,528	2,613	103
Eggs produced during July			
Total layers million	9,317.2	9,383.6	101
Table egg type million	8,063.5	8,101.9	100
Hatching egg type million	1,253.7	1,281.7	102
Broiler-type hatching million	1,170.5	1,207.0	103
Egg-type hatching million	83.2	74.7	90
Eggs produced during July			
Total layers 1,000 dozen	776,433.5	781,966.8	101
Table egg type 1,000 dozen	671,958.2	675,158.6	100
Hatching egg type 1,000 dozen	104,475.3	106,808.2	102
Broiler-type hatching 1,000 dozen	97,541.9	100,583.2	103
Egg-type hatching 1,000 dozen	6,933.4	6,225.0	90
Layers on August 1			
Total layers 1,000	380,700	384,941	101
Table egg type 1,000	316,516	319,329	101
Hatching egg type 1,000	64,184	65,612	102
Broiler-type hatching 1,000	60,889	62,740	103
Egg-type hatching 1,000	3,295	2,872	87
Eggs per 100 layers on August 1			
Total layers number	79.2	78.7	99
Table egg type number	82.5	82.0	99
Hatching egg type number	62.9	62.6	100
Broiler-type hatching number	61.8	61.6	100
Egg-type hatching number	83.2	83.2	100
Molted layers on August 1			
Being molted percent	1.6	2.0	125
Molt completed percent	14.7	13.2	90
Layers sold for slaughter during July 1,000	14,139.0	13,429.2	95
Layers rendered, died, destroyed, composted or disappeared for any reason during July 1,000	12,081.1	10,889.0	90
Pullets on August 1 1,000	122,240	126,210	103
Pullets added during July ¹ 1,000	25,543.4	25,292.6	99

¹ Pullet chicks less than 3 days old added to pullet flocks.

**Layers on Hand and Eggs Produced by Type and Molt – United States:
August-September 2020 and 2021**

Item	2020	2021	2021 as percent of 2020
Layers during August			
Total layers 1,000	382,184	384,747	101
Table egg type 1,000	318,028	319,428	100
Hatching egg type 1,000	64,156	65,319	102
Broiler-type hatching 1,000	60,845	62,460	103
Egg-type hatching 1,000	3,311	2,859	86
Eggs per 100 layers during August			
Total layers number	2,447	2,442	100
Table egg type number	2,546	2,541	100
Hatching egg type number	1,957	1,957	100
Broiler-type hatching number	1,923	1,929	100
Egg-type hatching number	2,582	2,585	100
Eggs produced during August			
Total layers million	9,352.5	9,394.5	100
Table egg type million	8,096.8	8,116.0	100
Hatching egg type million	1,255.7	1,278.5	102
Broiler-type hatching million	1,170.2	1,204.6	103
Egg-type hatching million	85.5	73.9	86
Eggs produced during August			
Total layers 1,000 dozen	779,375.1	782,874.9	100
Table egg type 1,000 dozen	674,733.2	676,333.3	100
Hatching egg type 1,000 dozen	104,641.9	106,541.6	102
Broiler-type hatching 1,000 dozen	97,516.8	100,383.3	103
Egg-type hatching 1,000 dozen	7,125.1	6,158.3	86
Layers on September 1			
Total layers 1,000	383,643	384,515	100
Table egg type 1,000	319,529	319,512	100
Hatching egg type 1,000	64,114	65,003	101
Broiler-type hatching 1,000	60,793	62,166	102
Egg-type hatching 1,000	3,321	2,837	85
Eggs per 100 layers on September 1			
Total layers number	77.7	78.8	101
Table egg type number	80.6	81.9	102
Hatching egg type number	63.5	63.6	100
Broiler-type hatching number	62.4	62.7	100
Egg-type hatching number	83.5	83.5	100
Molted layers on September 1			
Being molted percent	2.3	1.8	78
Molt completed percent	14.0	13.7	98
Layers sold for slaughter during August 1,000	14,791.9	14,535.5	98
Layers rendered, died, destroyed, composted or disappeared for any reason during August 1,000	9,853.2	10,944.3	111
Pullets on September 1 1,000	120,379	125,712	104
Pullets added during August ¹ 1,000	27,419.2	26,401.7	96

¹ Pullet chicks less than 3 days old added to pullet flocks.

Layers on Hand and Eggs Produced – States and United States: During July 2020 and 2021

State	Table egg layers in flocks 30,000 and above		Total layers		Eggs per 100 for total layers	
	2020	2021	2020	2021	2020	2021
	(1,000 layers)	(1,000 layers)	(1,000 layers)	(1,000 layers)	(eggs)	(eggs)
Alabama	1,359	1,442	10,695	10,885	2,005	1,972
Arkansas	(D)	(D)	15,732	16,768	2,057	2,072
California	12,650	13,364	13,343	14,001	2,424	2,507
Colorado	4,102	4,318	4,610	4,826	2,722	2,640
Georgia	9,665	8,732	20,031	19,228	2,191	2,160
Illinois	5,742	6,376	6,289	6,933	2,544	2,492
Indiana	32,111	33,938	33,395	35,176	2,584	2,567
Iowa	44,808	47,541	46,705	49,439	2,619	2,591
Kentucky	(D)	(D)	5,918	5,297	2,268	2,233
Maryland	2,436	2,267	2,636	2,463	2,530	2,546
Michigan	14,483	14,567	14,778	14,862	2,470	2,570
Minnesota	7,749	7,505	8,238	8,033	2,452	2,540
Mississippi	(D)	(D)	5,447	5,374	2,142	2,155
Missouri	7,724	7,294	12,869	13,018	2,571	2,450
Nebraska	8,006	7,530	8,531	8,189	2,327	2,461
New York	5,078	5,135	5,639	5,699	2,612	2,576
North Carolina	7,045	7,086	15,637	15,532	2,194	2,182
Ohio	32,242	33,272	33,465	34,588	2,557	2,526
Oklahoma	(D)	(D)	2,511	2,447	1,995	1,810
Oregon	2,049	1,888	2,220	2,059	2,518	2,671
Pennsylvania	28,359	27,800	30,973	30,235	2,607	2,592
South Carolina	2,351	2,264	3,598	3,509	2,268	2,163
South Dakota	2,596	1,882	2,651	1,937	2,659	2,705
Texas	(D)	(D)	22,335	22,385	2,313	2,335
Utah	4,443	5,742	4,495	5,794	2,661	2,585
Virginia	777	688	2,539	2,525	2,312	2,360
Washington	6,596	6,469	6,761	6,633	2,625	2,601
Wisconsin	6,720	5,893	7,823	7,022	2,518	2,572
Other States ¹	25,214	23,979	31,150	30,073	2,408	2,367
United States	301,044	302,706	381,014	384,930	2,445	2,438

(D) Withheld to avoid disclosing data for individual operations.

¹ Includes data for States not published in this table.

Layers on Hand and Eggs Produced – States and United States: During August 2020 and 2021

State	Table egg layers in flocks 30,000 and above		Total layers		Eggs per 100 for total layers	
	2020	2021	2020	2021	2020	2021
	(1,000 layers)	(1,000 layers)	(1,000 layers)	(1,000 layers)	(eggs)	(eggs)
Alabama	1,339	1,420	10,626	10,827	1,954	1,941
Arkansas	(D)	(D)	15,940	16,673	2,102	2,121
California	12,579	13,316	13,289	13,959	2,402	2,491
Colorado	4,351	4,206	4,859	4,714	2,661	2,660
Georgia	9,753	9,019	20,124	19,414	2,213	2,133
Illinois	5,768	6,429	6,324	6,992	2,609	2,554
Indiana	32,554	33,896	33,888	35,148	2,574	2,545
Iowa	45,092	47,457	47,002	49,356	2,639	2,592
Kentucky	(D)	(D)	5,861	5,389	2,303	2,238
Maryland	2,437	2,256	2,636	2,453	2,519	2,540
Michigan	14,349	14,804	14,644	15,099	2,492	2,498
Minnesota	7,801	7,597	8,296	8,115	2,578	2,568
Mississippi	(D)	(D)	5,413	5,323	2,167	2,170
Missouri	7,703	7,261	12,775	12,894	2,542	2,516
Nebraska	8,007	7,526	8,569	8,169	2,502	2,508
New York	5,119	5,119	5,680	5,685	2,625	2,612
North Carolina	7,051	6,888	15,487	15,237	2,235	2,221
Ohio	32,558	33,588	33,782	34,895	2,526	2,490
Oklahoma	(D)	(D)	2,606	2,546	1,915	1,834
Oregon	1,980	1,801	2,151	1,972	2,506	2,688
Pennsylvania	27,639	28,091	30,192	30,487	2,578	2,627
South Carolina	2,445	2,265	3,693	3,505	2,234	2,140
South Dakota	2,626	1,840	2,681	1,895	2,686	2,718
Texas	(D)	(D)	22,816	22,569	2,290	2,351
Utah	4,602	5,685	4,654	5,737	2,581	2,632
Virginia	798	596	2,579	2,385	2,129	2,348
Washington	6,499	6,324	6,664	6,488	2,638	2,585
Wisconsin	6,585	5,554	7,657	6,677	2,509	2,554
Other States ¹	25,429	24,065	31,296	30,144	2,399	2,387
United States	302,343	303,062	382,184	384,747	2,447	2,442

(D) Withheld to avoid disclosing data for individual operations.

¹ Includes data for States not published in this table.

Egg Production by Type – States and United States: July 2020 and 2021

[Data by type of flock not shown for some States to avoid disclosing individual operations, data included in United States totals]

State	Total production		Table eggs		Hatching eggs	
	2020	2021	2020	2021	2020	2021
	(million eggs)	(million eggs)	(million eggs)	(million eggs)	(million eggs)	(million eggs)
Alabama	214.4	214.6	37.5	36.2	176.9	178.4
Arkansas	323.6	347.5	(D)	(D)	(D)	(D)
California	323.5	351.0	(D)	(D)	(D)	(D)
Colorado	125.5	127.4	(D)	(D)	(D)	(D)
Georgia	438.9	415.3	242.2	217.0	196.7	198.3
Illinois	160.0	172.8	156.3	168.8	3.7	4.0
Indiana	862.8	902.9	846.6	887.5	16.2	15.4
Iowa	1,223.1	1,281.2	1,199.8	1,257.2	23.3	24.0
Kentucky	134.2	118.3	(D)	(D)	(D)	(D)
Maryland	66.7	62.7	65.1	61.3	1.6	1.4
Michigan	365.0	381.9	(D)	(D)	(D)	(D)
Minnesota	202.0	204.0	194.8	196.0	7.2	8.0
Mississippi	116.7	115.8	(D)	(D)	(D)	(D)
Missouri	330.8	319.0	292.6	278.4	38.2	40.6
Nebraska	198.5	201.5	188.4	189.2	10.1	12.3
New York	147.3	146.8	(D)	(D)	(D)	(D)
North Carolina	343.1	338.9	181.2	181.6	161.9	157.3
Ohio	855.8	873.7	(D)	(D)	(D)	(D)
Oklahoma	50.1	44.3	(D)	(D)	(D)	(D)
Oregon	55.9	55.0	55.9	55.0	-	-
Pennsylvania	807.6	783.6	777.3	757.6	30.3	26.0
South Carolina	81.6	75.9	58.9	53.4	22.7	22.5
South Dakota	70.5	52.4	70.5	52.4	-	-
Texas	516.7	522.8	(D)	(D)	(D)	(D)
Utah	119.6	149.8	119.6	149.8	-	-
Virginia	58.7	59.6	27.9	28.4	30.8	31.2
Washington	177.5	172.5	(D)	(D)	(D)	(D)
Wisconsin	197.0	180.6	190.7	174.6	6.3	6.0
Other States ¹	750.1	711.8	676.9	637.4	73.2	74.4
United States	9,317.2	9,383.6	8,063.5	8,101.9	1,253.7	1,281.7

- Represents zero.

(D) Withheld to avoid disclosing data for individual operations.

¹ Not published separately to avoid disclosing individual operations.

Egg Production by Type – States and United States: August 2020 and 2021

[Data by type of flock not shown for some States to avoid disclosing individual operations, data included in United States totals]

State	Total production		Table eggs		Hatching eggs	
	2020	2021	2020	2021	2020	2021
	(million eggs)	(million eggs)	(million eggs)	(million eggs)	(million eggs)	(million eggs)
Alabama	207.6	210.1	35.6	35.8	172.0	174.3
Arkansas	335.1	353.7	(D)	(D)	(D)	(D)
California	319.2	347.7	(D)	(D)	(D)	(D)
Colorado	129.3	125.4	(D)	(D)	(D)	(D)
Georgia	445.3	414.1	247.8	215.8	197.5	198.3
Illinois	165.0	178.6	161.0	174.6	4.0	4.0
Indiana	872.4	894.5	854.9	878.8	17.5	15.7
Iowa	1,240.2	1,279.1	1,215.8	1,255.1	24.4	24.0
Kentucky	135.0	120.6	(D)	(D)	(D)	(D)
Maryland	66.4	62.3	64.8	61.0	1.6	1.3
Michigan	364.9	377.2	(D)	(D)	(D)	(D)
Minnesota	213.9	208.4	206.8	200.0	7.1	8.4
Mississippi	117.3	115.5	(D)	(D)	(D)	(D)
Missouri	324.8	324.4	287.0	286.4	37.8	38.0
Nebraska	214.4	204.9	203.8	193.3	10.6	11.6
New York	149.1	148.5	(D)	(D)	(D)	(D)
North Carolina	346.1	338.4	186.0	181.2	160.1	157.2
Ohio	853.5	868.8	(D)	(D)	(D)	(D)
Oklahoma	49.9	46.7	(D)	(D)	(D)	(D)
Oregon	53.9	53.0	53.9	53.0	-	-
Pennsylvania	778.4	801.0	749.4	775.2	29.0	25.8
South Carolina	82.5	75.0	59.5	52.1	23.0	22.9
South Dakota	72.0	51.5	72.0	51.5	-	-
Texas	522.6	530.5	(D)	(D)	(D)	(D)
Utah	120.1	151.0	120.1	151.0	-	-
Virginia	54.9	56.0	24.2	26.4	30.7	29.6
Washington	175.8	167.7	(D)	(D)	(D)	(D)
Wisconsin	192.1	170.5	186.4	164.6	5.7	5.9
Other States ¹	750.8	719.4	678.3	643.4	72.5	76.0
United States	9,352.5	9,394.5	8,096.8	8,116.0	1,255.7	1,278.5

- Represents zero.

(D) Withheld to avoid disclosing data for individual operations.

¹ Not published separately to avoid disclosing individual operations.

Egg Production in Dozens by Type – States and United States: July 2020 and 2021

[Data by type of flock not shown for some States to avoid disclosing individual operations, data included in United States totals]

State	Total production		Table eggs		Hatching eggs	
	2020	2021	2020	2021	2020	2021
	(1,000 dozen eggs)	(1,000 dozen eggs)	(1,000 dozen eggs)	(1,000 dozen eggs)	(1,000 dozen eggs)	(1,000 dozen eggs)
Alabama	17,866.7	17,883.4	3,125.0	3,016.7	14,741.7	14,866.7
Arkansas	26,966.7	28,958.4	(D)	(D)	(D)	(D)
California	26,958.4	29,250.0	(D)	(D)	(D)	(D)
Colorado	10,458.3	10,616.7	(D)	(D)	(D)	(D)
Georgia	36,574.9	34,608.3	20,183.3	18,083.3	16,391.6	16,525.0
Illinois	13,333.4	14,399.9	13,025.0	14,066.6	308.4	333.3
Indiana	71,900.0	75,241.6	70,550.0	73,958.3	1,350.0	1,283.3
Iowa	101,925.1	106,766.7	99,983.4	104,766.7	1,941.7	2,000.0
Kentucky	11,183.3	9,858.3	(D)	(D)	(D)	(D)
Maryland	5,558.3	5,225.1	5,425.0	5,108.4	133.3	116.7
Michigan	30,416.7	31,825.0	(D)	(D)	(D)	(D)
Minnesota	16,833.4	17,000.0	16,233.4	16,333.3	600.0	666.7
Mississippi	9,725.0	9,650.0	(D)	(D)	(D)	(D)
Missouri	27,566.7	26,583.3	24,383.3	23,200.0	3,183.4	3,383.3
Nebraska	16,541.7	16,791.6	15,700.0	15,766.6	841.7	1,025.0
New York	12,274.9	12,233.4	(D)	(D)	(D)	(D)
North Carolina	28,591.7	28,241.7	15,100.0	15,133.4	13,491.7	13,108.3
Ohio	71,316.7	72,808.3	(D)	(D)	(D)	(D)
Oklahoma	4,175.0	3,691.7	(D)	(D)	(D)	(D)
Oregon	4,658.3	4,583.3	4,658.3	4,583.3	-	-
Pennsylvania	67,300.0	65,300.1	64,775.0	63,133.4	2,525.0	2,166.7
South Carolina	6,800.0	6,325.0	4,908.3	4,450.0	1,891.7	1,875.0
South Dakota	5,875.0	4,366.7	5,875.0	4,366.7	-	-
Texas	43,058.3	43,566.7	(D)	(D)	(D)	(D)
Utah	9,966.7	12,483.3	9,966.7	12,483.3	-	-
Virginia	4,891.7	4,966.6	2,325.0	2,366.6	2,566.7	2,600.0
Washington	14,791.6	14,375.0	(D)	(D)	(D)	(D)
Wisconsin	16,416.6	15,050.0	15,891.6	14,550.0	525.0	500.0
Other States ¹	62,508.4	59,316.7	56,408.3	53,116.7	6,100.1	6,200.0
United States	776,433.5	781,966.8	671,958.2	675,158.6	104,475.3	106,808.2

- Represents zero.

(D) Withheld to avoid disclosing data for individual operations.

¹ Not published separately to avoid disclosing individual operations.

Egg Production in Dozens by Type – States and United States: August 2020 and 2021

[Data by type of flock not shown for some States to avoid disclosing individual operations, data included in United States totals]

State	Total production		Table eggs		Hatching eggs	
	2020	2021	2020	2021	2020	2021
	(1,000 dozen eggs)	(1,000 dozen eggs)	(1,000 dozen eggs)	(1,000 dozen eggs)	(1,000 dozen eggs)	(1,000 dozen eggs)
Alabama	17,299.9	17,508.3	2,966.6	2,983.3	14,333.3	14,525.0
Arkansas	27,924.9	29,475.0	(D)	(D)	(D)	(D)
California	26,600.0	28,975.1	(D)	(D)	(D)	(D)
Colorado	10,775.0	10,450.0	(D)	(D)	(D)	(D)
Georgia	37,108.4	34,508.3	20,650.0	17,983.3	16,458.4	16,525.0
Illinois	13,749.9	14,883.3	13,416.6	14,550.0	333.3	333.3
Indiana	72,700.0	74,541.7	71,241.7	73,233.3	1,458.3	1,308.4
Iowa	103,350.1	106,591.7	101,316.7	104,591.7	2,033.4	2,000.0
Kentucky	11,250.0	10,049.9	(D)	(D)	(D)	(D)
Maryland	5,533.3	5,191.8	5,400.0	5,083.4	133.3	108.4
Michigan	30,408.3	31,433.3	(D)	(D)	(D)	(D)
Minnesota	17,825.1	17,366.6	17,233.4	16,666.6	591.7	700.0
Mississippi	9,775.0	9,625.0	(D)	(D)	(D)	(D)
Missouri	27,066.7	27,033.3	23,916.7	23,866.6	3,150.0	3,166.7
Nebraska	17,866.6	17,074.9	16,983.3	16,108.3	883.3	966.6
New York	12,425.0	12,375.0	(D)	(D)	(D)	(D)
North Carolina	28,841.7	28,200.0	15,500.0	15,100.0	13,341.7	13,100.0
Ohio	71,125.1	72,400.1	(D)	(D)	(D)	(D)
Oklahoma	4,158.4	3,891.7	(D)	(D)	(D)	(D)
Oregon	4,491.6	4,416.6	4,491.6	4,416.6	-	-
Pennsylvania	64,866.7	66,750.0	62,450.0	64,600.0	2,416.7	2,150.0
South Carolina	6,875.0	6,249.9	4,958.3	4,341.6	1,916.7	1,908.3
South Dakota	6,000.0	4,291.7	6,000.0	4,291.7	-	-
Texas	43,550.0	44,208.3	(D)	(D)	(D)	(D)
Utah	10,008.3	12,583.4	10,008.3	12,583.4	-	-
Virginia	4,575.0	4,666.6	2,016.6	2,200.0	2,558.4	2,466.6
Washington	14,650.0	13,975.0	(D)	(D)	(D)	(D)
Wisconsin	16,008.3	14,208.3	15,533.3	13,716.7	475.0	491.6
Other States ¹	62,566.8	59,950.1	56,525.1	53,616.8	6,041.7	6,333.3
United States	779,375.1	782,874.9	674,733.2	676,333.3	104,641.9	106,541.6

- Represents zero.

(D) Withheld to avoid disclosing data for individual operations.

¹ Not published separately to avoid disclosing individual operations.

Total Layers Molted First Day of the Month by Month – United States: 2020-2021

[Blank data cells indicate estimation period has not yet begun]

Month	Being molted		Molt completed	
	2020	2021	2020	2021
	(percent)	(percent)	(percent)	(percent)
January	1.7	2.2	11.9	14.0
February	2.3	1.8	12.0	14.4
March	1.7	1.6	12.3	14.7
April	1.3	1.4	12.1	14.1
May	3.5	2.5	11.0	12.8
June	4.6	2.3	11.8	12.8
July	2.4	2.0	13.8	13.5
August	1.6	2.0	14.7	13.2
September	2.3	1.8	14.0	13.7
October	2.3		14.7	
November	1.2		15.4	
December	1.1		14.9	

Total Layers Molted First Day of the Month – States and United States: August 1 and September 1, 2020-2021

State	Being molted				Molt completed			
	August 1		September 1		August 1		September 1	
	2020	2021	2020	2021	2020	2021	2020	2021
	(percent)	(percent)	(percent)	(percent)	(percent)	(percent)	(percent)	(percent)
Alabama	0.5	0.5	0.5	0.5	4.5	4.0	4.5	4.0
Arkansas	0.5	-	1.5	0.5	13.0	13.5	12.0	12.5
California	2.0	1.5	2.0	0.5	7.5	7.5	7.0	7.5
Colorado	-	-	1.5	-	6.0	8.5	3.5	8.5
Georgia	1.5	1.5	0.5	4.5	10.5	11.0	9.5	9.0
Illinois	1.5	-	-	2.0	3.0	2.5	3.0	2.5
Indiana	2.5	2.0	1.0	1.5	13.0	11.5	13.0	12.0
Iowa	0.5	1.0	0.5	2.0	15.5	10.5	14.5	11.0
Kentucky	3.0	5.5	3.0	-	8.0	-	7.0	3.0
Maryland	-	-	-	-	-	-	-	-
Michigan	1.0	1.5	-	-	1.5	2.0	1.5	3.0
Minnesota	-	1.0	1.5	2.0	19.5	6.5	19.0	7.0
Mississippi	2.0	-	3.0	0.5	24.0	19.0	24.0	18.5
Missouri	3.0	1.0	0.5	-	2.0	11.0	4.5	11.0
Nebraska	1.0	2.0	-	-	40.0	1.0	40.0	3.0
New York	-	-	-	-	6.0	4.5	3.5	4.5
North Carolina	2.0	2.0	2.0	0.5	7.5	12.5	9.0	12.0
Ohio	1.5	2.5	3.5	1.0	20.5	13.0	18.5	14.5
Oklahoma	3.5	-	9.0	5.5	9.5	5.5	5.5	5.0
Oregon	-	-	-	2.0	1.0	-	-	2.0
Pennsylvania	-	3.5	5.5	2.5	6.0	2.0	1.0	2.0
South Carolina	3.0	3.0	2.5	3.0	20.0	19.0	21.0	19.0
South Dakota	-	-	-	-	-	3.5	-	-
Texas	4.0	5.0	6.5	4.5	48.0	56.0	46.5	57.5
Utah	2.5	4.5	7.0	8.5	17.5	26.5	14.5	30.5
Virginia	-	-	-	-	-	-	-	-
Washington	-	3.0	1.0	3.5	14.0	17.5	12.0	16.0
Wisconsin	-	-	-	-	23.5	18.0	24.0	16.5
Other States ¹	3.8	3.5	4.6	2.1	17.7	23.8	19.6	25.4
United States	1.6	2.0	2.3	1.8	14.7	13.2	14.0	13.7

- Represents zero.

¹ Includes data for States not published in this table.

Hatchery Production – United States: 2020 and 2021

Item	2020	2021	2021 as percent of 2020
	(1,000)	(1,000)	(percent)
Egg-type			
Eggs in incubators on September 1	47,296	44,971	95
Chicks hatched during August	50,007	49,718	99
Chicks hatched January through August	422,576	436,484	103
Pullets hatched during August for intended placements:			
Hatchery supply flocks	370	330	89
Cumulative potential placements 7-18 months earlier ¹	2,869	3,624	126
Broiler-type			
Eggs in incubators on September 1	691,508	711,643	103
Chicks hatched during August	837,852	840,621	100
Chicks hatched January through August	6,624,889	6,631,591	100
Pullets hatched during August for intended placements:			
Hatchery supply flocks	8,211	8,737	106
Cumulative potential placements 7-15 months earlier ²	74,484	74,180	100

¹ 2021 includes pullet chicks hatched February 2020 through January 2021.

² 2021 includes pullet chicks hatched May 2020 through January 2021.

Egg-Type Eggs in Incubators on the First of the Month – United States: 2020-2021

[Blank data cells indicate estimation period has not yet begun]

Item	2020	2021	2021 as percent of 2020
	(1,000)	(1,000)	(percent)
January	47,563	50,735	107
February	50,382	53,521	106
March	49,101	59,970	122
April	57,435	55,684	97
May	49,502	53,802	109
June	50,029	51,073	102
July	46,093	50,532	110
August	46,242	44,203	96
September	47,296	44,971	95
October	46,624		
November	44,601		
December	53,170		

Egg-Type Chicks Hatched by Month – United States: 2020-2021

[Blank data cells indicate estimation period has not yet begun]

Month	By Months			Cumulative		
	2020	2021	2021 as percent of 2020	2020	2021	2021 as percent of 2020
	(1,000 chicks)	(1,000 chicks)	(percent)	(1,000 chicks)	(1,000 chicks)	(percent)
January	52,727	50,882	97	52,727	50,882	97
February	48,148	52,273	109	100,875	103,155	102
March	56,212	62,319	111	157,087	165,474	105
April	61,015	59,877	98	218,102	225,351	103
May	52,790	57,332	109	270,892	282,683	104
June	55,537	53,799	97	326,429	336,482	103
July	46,140	50,284	109	372,569	386,766	104
August	50,007	49,718	99	422,576	436,484	103
September	49,989			472,565		
October	50,597			523,162		
November	48,042			571,204		
December	51,765			622,969		

Intended Placements of Egg-Type Pullet Chicks for Hatchery Supply Flocks by Month and Total – United States: 2020-2022

[Blank data cells indicate estimation period has not yet begun]

Month	Pullet chicks hatched		2021 as percent of 2020	Cumulative potential placements relative to current supply flocks 7-18 months earlier ¹	
	2020	2021		2021	2022
	(1,000 chicks)	(1,000 chicks)	(percent)	(1,000 chicks)	(1,000 chicks)
January	265	279	105	3,352	3,360
February	482	202	42	3,391	3,265
March	322	327	102	3,567	3,225
April	243	266	109	3,482	
May	233	306	131	3,480	
June	373	288	77	3,451	
July	294	199	68	3,610	
August	370	330	89	3,624	
September	201			3,344	
October	197			3,349	
November	169			3,372	
December	461			3,445	
Annual total	3,610				

¹ For August 2021, includes breeder pullet chicks hatched February 2020 through January 2021. The 7-18 months represent the first laying cycle. Molting and additional laying cycles will increase the cumulative potential placements.

Broiler-Type Eggs in Incubators on the First of the Month – United States: 2020-2021

[Blank data cells indicate estimation period has not yet begun]

Item	2020	2021	2021 as percent of 2020
	(1,000)	(1,000)	(percent)
January	714,799	712,232	100
February	716,942	703,515	98
March	718,746	710,502	99
April	692,345	717,361	104
May	662,186	717,718	108
June	701,760	720,441	103
July	700,673	714,769	102
August	687,521	715,722	104
September	691,508	711,643	103
October	665,148		
November	664,550		
December	706,563		

Broiler-Type Chicks Hatched – States and United States: August 2020 and 2021

State	During August			January-August		
	2020	2021	2021 as percent of 2020	2020	2021	2021 as percent of 2020
	(1,000 chicks)	(1,000 chicks)	(percent)	(1,000 chicks)	(1,000 chicks)	(percent)
Alabama	118,340	119,009	101	938,664	934,998	100
Arkansas	84,452	86,522	102	662,759	671,367	101
Delaware	16,942	15,940	94	136,770	134,955	99
Florida	4,343	3,941	91	34,061	33,120	97
Georgia	122,598	119,657	98	971,778	943,721	97
Kentucky	26,896	26,810	100	212,340	212,367	100
Louisiana	11,705	11,258	96	96,684	92,957	96
Maryland	29,136	28,515	98	229,293	224,505	98
Mississippi	62,987	62,584	99	510,060	492,907	97
Missouri	33,368	33,604	101	254,604	263,139	103
North Carolina	88,133	87,581	99	686,367	699,312	102
Oklahoma	25,428	23,864	94	204,193	197,077	97
Pennsylvania	23,780	24,052	101	178,365	184,194	103
South Carolina	20,043	20,580	103	157,152	158,233	101
Texas	63,425	62,862	99	499,002	503,675	101
Virginia	22,825	23,582	103	176,572	183,640	104
California, Tennessee, and West Virginia	42,312	45,246	107	353,428	354,416	100
Other States ¹	41,139	45,014	109	322,797	347,008	108
United States	837,852	840,621	100	6,624,889	6,631,591	100

¹ Not published separately to avoid disclosing data for individual operations.

Broiler-Type Chicks Hatched by Month – United States: 2020-2021

[Blank data cells indicate estimation period has not yet begun]

Month	By Months			Cumulative		
	2020	2021	2021 as percent of 2020	2020	2021	2021 as percent of 2020
	(1,000 chicks)	(1,000 chicks)	(percent)	(1,000 chicks)	(1,000 chicks)	(percent)
January	860,517	849,965	99	860,517	849,965	99
February	806,947	759,210	94	1,667,464	1,609,175	97
March	861,074	841,946	98	2,528,538	2,451,121	97
April	771,589	821,223	106	3,300,127	3,272,344	99
May	807,648	850,810	105	4,107,775	4,123,154	100
June	828,490	823,588	99	4,936,265	4,946,742	100
July	850,772	844,228	99	5,787,037	5,790,970	100
August	837,852	840,621	100	6,624,889	6,631,591	100
September	809,563			7,434,452		
October	805,553			8,240,005		
November	783,152			9,023,157		
December	848,536			9,871,693		

Intended Placements of Broiler-Type Pullet Chicks for Hatchery Supply Flocks by Month and Total: 2020-2022

[Blank data cells indicate estimation period has not yet begun]

Month	Pullet chicks hatched		2021 as percent of 2020	Cumulative potential placements relative to current supply flocks 7-15 months earlier ¹	
	2020	2021		2021	2022
	(1,000 chicks)	(1,000 chicks)	(percent)	(1,000 chicks)	(1,000 chicks)
United States placements					
January	7,482	8,095	108	72,886	74,605
February	8,135	8,245	101	73,590	75,156
March	8,547	8,232	96	73,660	76,097
April	8,161	8,110	99	74,741	
May	8,188	8,708	106	75,331	
June	8,074	9,546	118	74,992	
July	8,235	8,623	105	74,246	
August	8,211	8,737	106	74,180	
September	9,708			74,237	
October	8,072			74,395	
November	7,796			74,270	
December	7,801			74,767	
Annual total	98,410				
Total placements ²					
January	9,022	9,811	109		
February	9,581	9,954	104		
March	10,183	9,996	98		
April	9,700	9,908	102		
May	9,860	10,148	103		
June	9,713	11,179	115		
July	9,726	10,079	104		
August	9,902	10,585	107		
September	11,729				
October	9,975				
November	9,324				
December	9,177				
Annual total	117,892				

¹ For August 2021, includes breeder pullet chicks hatched May 2020 through January 2021.

² United States production of intended placements worldwide.

Terms and Definitions of Chickens and Eggs Estimates

Total Layers includes both table egg and hatching egg flocks regardless of size.

Intended Placements are reported by leading breeders. Coverage may not be 100 percent. Includes expected pullet chicks from eggs sold during the preceding month at the rate of 125 pullet chicks per case of 30 dozen eggs.

Molted Layers is the same data series as the previously published Forced Molt Layers. Nomenclature changed as of January 2015.

Statistical Methodology

Survey Procedures: Primary data for the *Chickens and Eggs* report are from weekly and/or monthly questionnaires sent to producers. An attempt is made to collect information for layer and egg estimates from each known contractor and independent producer who has at least 30,000 table egg layers, flocks of hatchery supply layers, or pullet only operations with at least 500 pullets. Coverage for operations with less than 30,000 table egg layers are estimated each month based on data reported in December. Approximately 500 contractors, independent egg producers, and pullet only operations are contacted each month. Data for broiler hatchery estimates are collected weekly from all broiler-type hatcheries that hatch at least one million chicks a year. Data for egg-type hatchery estimates are collected monthly from all egg-type hatcheries that hatch at least 50,000 chicks a year.

Estimating Procedures: Sound statistical methodology is employed to derive estimates from the reported data. All data are analyzed for unusual values. Data from each operation are compared to their own past operating profile and to trends from similar operations. Data for missing operations are estimated based on similar operations or historical data. NASS regional field offices prepare these estimates by using a combination of survey indications and historic trends. Individual State estimates are reviewed by the Agricultural Statistics Board for reasonableness.

For chicken hatcheries, chicks hatched consist of all chicks of domesticated breeds including males and chicks destined for hatchery supply flocks and research purposes. Eggs set are eggs in incubators for the purpose of hatching. The relationship of egg-type chicks hatched to chicken inventory and poultry marketings are carefully monitored. The disposition of egg-type chicks hatched prior to placement into the laying flock can vary significantly, which can make comparisons to changes in layer inventory inconsistent over time. Broiler chicks placed are specifically for meat production. Intended placement data reported by leading breeders include pullet chicks expected from eggs sold the preceding month. The breeders in this report account for a large percentage of replacement pullets for hatchery supply flocks. Production of replacement pullets by these breeders indicates the number of pullets available to hatchery supply layer flocks several months before the pullets will actually move into the laying flocks. "Hatchery Supply Flocks" include all generations of layers which could lay eggs to supply a hatchery. This includes the generations of parents, grandparents, great-grandparents, pedigree, etc. Also included are research flocks, vaccine flocks, and specific pathogen-free flocks. The broiler cumulative potential placements are a moving total of the intended placements 7-15 months earlier. The egg-type cumulative potential placements of 7-18 months earlier represent the first laying cycle. Molting and additional laying cycles will increase the cumulative potential placements of egg-type hatching flocks.

Revision Policy: The previous month's estimates are subject to revision if late reports or corrected data indicates a different level. Additionally, revisions after the monthly report will be made at the end of the marketing year and published in the annual reports of *Chickens and Eggs Summary* and *Hatchery Production Summary*. Estimates will also be reviewed for chickens and eggs after data from the 5-year Census of Agriculture are available. No revisions will be made after that date.

Reliability: Estimates are based on a census of all known contractors and independent producers who have at least 30,000 table egg layers, flocks of hatchery supply layers, pullet only operations with at least 500 pullets, or operating hatcheries and therefore, have no sampling error. However, estimates are subject to errors such as omission, duplication, and mistakes in reporting, recording, and processing the data. While these errors cannot be measured directly, they are minimized through strict quality controls in the data collection process and a careful review of all reported data for consistency and reasonableness.

To assist in evaluating the reliability of the estimates in this report, the "Root Mean Square Error" is shown for selected items in the following table. The "Root Mean Square Error" is a statistical measure based on past performance and is computed using the differences between first and final estimates. The "Root Mean Square Error" for total layers over the past 24 months is 0.2 percent. This means that chances are 2 out of 3 that the final estimate will not be above or below the current estimate of 385 million layers by more than 0.2 percent. Chances are 9 out of 10 that the difference will not exceed 0.4 percent.

Reliability of Layer and Egg Estimates

[Based on data for the past 24 months]

Item	Root mean square error	90 percent confidence level	Difference between first and latest estimate				
			Average	Smallest	Largest	Months	
						Below latest	Above latest
Total layers	(percent) 0.2	(percent) 0.4	(1,000) 653	(1,000) 34	(1,000) 2,273	(number) 18	(number) 6
Eggs	0.3	0.4	(million) 18.4	(million) 0	(million) 65	18	6

Information Contacts

Listed below are the commodity specialists in the Livestock Branch of the National Agricultural Statistics Service to contact for additional information. E-mail inquiries may be sent to nass@usda.gov

Travis Averill, Chief, Livestock Branch	(202) 692-0069
Jean Porter, Head, Poultry and Specialty Commodities Section	(202) 690-3223
Holly Brenize – Poultry Slaughter.....	(202) 720-0585
Alissa Cowell-Mytar – Cold Storage, Capacity of Refrigerated Warehouses	(202) 720-4751
Liana Cuffman – Catfish and Trout, Mink, Census of Aquaculture	(202) 720-8784
Fatema Haque – Turkey Hatchery, Turkeys Raised	(202) 720-3244
Derron Martin – Chicken Hatchery, Egg Products.....	(202) 690-3237
Seth Riggins – Honey, Honey Bee Colonies	(202) 690-4870
Autumn Stone – Layers, Eggs	(202) 690-3676
Takiyah Walker – Broiler Hatchery.....	(202) 720-6147

Access to NASS Reports

For your convenience, you may access NASS reports and products the following ways:

- All reports are available electronically, at no cost, on the NASS web site: www.nass.usda.gov
- Both national and state specific reports are available via a free e-mail subscription. To set-up this free subscription, visit www.nass.usda.gov and click on “National” or “State” in upper right corner above “search” box to create an account and select the reports you would like to receive.
- Cornell’s Mann Library has launched a new website housing NASS’s and other agency’s archived reports. The new website, <https://usda.library.cornell.edu>. All email subscriptions containing reports will be sent from the new website, <https://usda.library.cornell.edu>. To continue receiving the reports via e-mail, you will have to go to the new website, create a new account and re-subscribe to the reports. If you need instructions to set up an account or subscribe, they are located at: <https://usda.library.cornell.edu/help>. You should whitelist notifications@usda-esmis.library.cornell.edu in your email client to avoid the emails going into spam/junk folders.

For more information on NASS surveys and reports, call the NASS Agricultural Statistics Hotline at (800) 727-9540, 7:30 a.m. to 4:00 p.m. ET, or e-mail: nass@usda.gov.

The U.S. Department of Agriculture (USDA) prohibits discrimination against its customers, employees, and applicants for employment on the basis of race, color, national origin, age, disability, sex, gender identity, religion, reprisal, and where applicable, political beliefs, marital status, familial or parental status, sexual orientation, or all or part of an individual's income is derived from any public assistance program, or protected genetic information in employment or in any program or activity conducted or funded by the Department. (Not all prohibited bases will apply to all programs and/or employment activities.)

If you wish to file a Civil Rights program complaint of discrimination, complete the [USDA Program Discrimination Complaint Form](#) (PDF), found online at www.ascr.usda.gov/filing-program-discrimination-complaint-usda-customer, or at any USDA office, or call (866) 632-9992 to request the form. You may also write a letter containing all of the information requested in the form. Send your completed complaint form or letter to us by mail at U.S. Department of Agriculture, Director, Office of Adjudication, 1400 Independence Avenue, S.W., Washington, D.C. 20250-9410, by fax (202) 690-7442 or email at program.intake@usda.gov.



USDA Fall Data Users' Meeting

Virtual Meeting
October 13 & 14, 2021
12:00 – 3:00 p.m. ET

USDA's National Agricultural Statistics Service will hold a virtual meeting for users of U.S. domestic and international agriculture data. NASS is organizing the 2021 Fall Data Users' Meeting in cooperation with five other USDA agencies – Agricultural Marketing Service, Economic Research Service, Farm Service Agency, Foreign Agricultural Service, and World Agricultural Outlook Board – and the Census Bureau's Foreign Trade Division. Agency representatives will answer questions and welcome comments and input from data users. Registration details will be coming soon.