



# TURKEY MARKET NEWS REPORT

ISSN 1522-0575

Friday, September 24, 2021

Vol. 68 No. 38

U.S. Department of Agriculture

Agricultural Marketing Service

Livestock, Poultry & Grain Market News

## National Turkey Market At-A-Glance

**Domestic Market Highlights** The market on frozen 8-16 lb. hens is firm and 16-24 lb. toms is steady with spot unsettledness noted. The market on fresh turkeys for November is steady to firm. Frozen demand light to moderate centering on hens. November fresh demand is moderate to good. Frozen domestic processor offerings of Grade A 8-16 lb. hens short of needs to instances very light, 16-24 lb. toms are light and held with varied degrees of confidence. Fresh 8-16 lb. hens and 16-24 lb. tom offerings light for November with no offerings of fresh 8-16 lb. hens noted for current shipments. Frozen Grade A basted equivalent processor offering prices on a national basis for 8-16 lb. hens are 133-145 FOB and 16-24 lb. tom offerings at 123.00-145.00 cents FOB for current deliveries. Trading slow on Grade A frozen basted equivalent 16-24 lb. toms from 2021 production 123 cents FOB for current shipments.

The market on white meats and white trims is steady to mostly firm. Demand moderate to good. Offerings short to light. Further processed demand good. The market on consumer and institutional sized bone-in breasts is steady to firm. Demand light to moderate. Offerings short to light at best. The market on tom full-cut wings is steady to weak. Demand light to moderate. Offerings moderate to moderately heavy. The tom drum, neck and 2-joint wing markets are steady to firm. Demand moderate to good. Offerings light. The tails market is steady to barely steady. Demand light to moderate with offerings mixed. The thigh meat market is steady to barely steady. Demand and offerings light to moderate. The mechanically separated turkey (MST) market is steady to instances weak, mostly steady with some spot loads of fresh destined for pet foods. Demand light to moderate. Offerings generally moderate. Trading slow to moderate.

**Export Market Highlights** Trading slow with activity noted on lean scapula. The market on tom wings is steady to weak, tails and thigh meat are steady to barely steady, drums at least steady and white meat and white rims steady to firm. Demand is light to moderate. Offerings uneven ranging very light to moderate.

### Weekly National Whole Young Turkeys

**Frozen** - commodity pack or equivalent; minimum 10,000 lb. lots; current negotiation for delivery within two weeks.

U.S. Grade A - FROZEN	Current Week		Last Week		Last Year	
	wtd avg (cents/lb)	volume (000 lbs.)	wtd avg (cents/lb)	volume (000 lbs.)	wtd avg (cents/lb)	volume (000 lbs.)
8-16 lb. (Hens)	139.00 <sup>1</sup>		144.29	85	116.00	80
16-24 lb. (Toms)	129.50	80	140.14	72	114.83	120

<sup>1</sup> based on offers.

<sup>2</sup> Too Few To Report

**FRESH Whole Body Turkeys** - with timers; for delivery within the next seven days.

U.S. Grade A - FRESH	Current Week		Last Week		Last Year	
	wtd avg (cents/lb)	volume (000 lbs.)	wtd avg (cents/lb)	volume (000 lbs.)	wtd avg (cents/lb)	volume (000 lbs.)
<b>Priced At Time Of Sale:</b>						
8-16 lb. (Hens)		<sup>2</sup>		<sup>2</sup>	122.98	127.0
16-24 lb. (Toms)	150.00	25.0	150.00	25.0	126.67	45.0
<b>Price To Be Determined:</b>						
8-16 lb. (Hens)	--		--			3.0
16-24 lb. (Toms)	--		--			

### Week Ending 18-Sep-2021 (Preliminary)

#### Turkeys Slaughtered In Federally Inspected Plants

- Thousand Head-	Young turkeys- - - - -		Old		Total turkeys	
	Pct Chg Prev wk	Avg Live wt	Breeders --Thousand head--		Avg Live wt	
North East	526	-1	23.52	(A)	526	23.52
South Atlantic	473	50	41.62	(A)	473	41.62
North Central	2,034	11	35.81	(A)	2,042	35.81
South Central	671	11	20.42	(A)	674	20.42
West	156	26	33.84	(A)	156	33.84
U.S. total	3,860 (B)	13	32.09	11	3,871	32.08
To-date						
2021*	141,264 (B)			573	141,837	
To-date						
2020*	151,032 (B)			457	151,489	

(A) Not published to avoid disclosing individual operations.

(B) Number of young banded breeder turks included: this week 23,000; for the current year to date\* 678,000; for last year to date\* 621,000.

\*Note: Year to-date totals reflect comparable time periods.

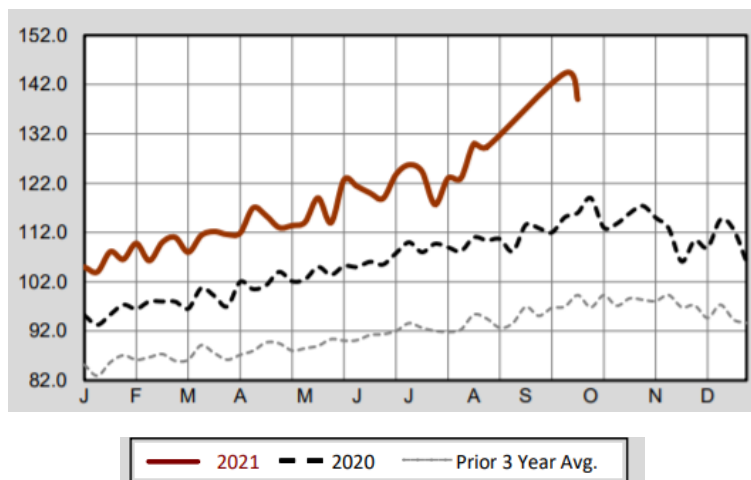
#### Live Turkeys Slaughtered Under Federal Inspection

	Young		Breeders		Total Turkeys
	Hens	Toms	Young	Old	
Head	1,736	2,101	23	11	3,871
Avg Wt	17.61	44.08	29.24	29.25	32.08
Head Slaughter Comparisons					
Last week	1,498	1,877	29	15	3,419
Same wk yr ago	1,794	2,107	25	16	3,942
Avg Wt	16.29	44.22	29	30.38	31.35
To-date/2021*	62,629	77,957	678	573	141,837
To-date/2020*	64,178	86,233	621	457	151,489
% Change YTD	-2%	-10%	9%	25%	-6%
Ready-to-Cook Weight and Dressing Percentage					
Current week	24,610	74,553	521	249	99,933
Last week	21,465	66,710	609	345	89,129
Same wk yr ago	23,526	75,003	562	377	99,468
To-date/2021*	855,983	2,782,898	16,552	13,311	3,668,744
To-date/2020*	859,859	3,042,742	13,821	10,650	3,927,072
% Change YTD	0%	-9%	20%	25%	-7%
Dressing %	80.50%	80.50%	77.50%	77.50%	

(A) Dressing % adjustments reflect quarterly update.

\*Note: Year to-date totals reflect comparable time periods.

**National FROZEN Hen Trend**  
(weighted average price in cents per pound; f.o.b. shipper dock)



### Weekly Cold Storage Holdings – in Selected Centers, Includes Government Stocks in Thousands of Pounds

	9/20/2021	9/1/2021	Change from First of the Month in Total Pounds	% Change from First of the Month
<b>Processed Turkeys</b>	69,406	69,922	-516	-1%

#### Cold Storage Holdings - Pacific Coast

Processed Turkey	9/13/2021	09/06/21	09/14/20
<b>Pacific without Denver:</b>	375	381	381
<b>Los Angeles:</b>	180	170	170

**National Young Turkey Parts** - Bulk Meat and Frozen (Unless Specified), Delivered First Receivers, Part and Full Trucklots.

The market on white meat and white trims is steady to firm with white meat strongest. Demand moderate to mostly good. Offerings short to light. The market on tom full-cut wings is steady to weak with tom 2-joint wings, necks and drums steady to firm. Demand light to good, mostly moderate to good. Offerings of tom full-cut wings moderate to moderately heavy, balance light at best. The thigh meat market is steady to barely steady. Demand and offerings light to moderate. Trading slow to moderate. For domestic: Grade A 8-10 lb. breasts - 155-159, hearts 110, tails 136, defatted gizzards 150; fresh - scapula 205, tom necks 74, tom wings 75, drumettes 60, MST 28 (pet food), frames 20 cents delivered. For export: lean scapula 205 cents delivered.

<b>Domestic Trading</b>	<b>wtd avg (cents/lb.)</b>	<b>Weekly volume (000 lbs.)</b>
Breasts, 4-8 lbs. Grade A 2/		
Breasts, 4-8 lbs. Grade A--Fresh 2/	170.11	18
Breasts, 4-8 lbs. Plant Grade 2/		
Drumsticks, Tom	114.83	193
Drumsticks, Tom--Fresh	105.65	228
Drumsticks, Hen	105.17	48
Wings, Full-Cut, Tom	97.98	372
Wings, Full-Cut, Hen	98.00	8
Wings, V-Type, Tom	96.53	602
Wings, V-Type, Hen		
Necks, Tom	85.85	283
Necks, Hen	72.00	8
Breasts, B/S, Tom 3/	325.00	4
Breasts, B/S, Tom--Fresh 3/	325.00	200
Thigh Meat	200.00	40
Thigh Meat--Fresh	201.90	404
Breast Trim Meat		
Scapula Meat	185.00	20
Wing Meat With Skin		
Tenderloins	275.00	4
De strapped Tenders		
De strapped Tenders--Fresh	275.00	80
Mechanically Separated 4/		
Mechanically Separated--Fresh 4/	54.50	720
<b>Export Trading</b>		
Drumsticks, Toms	115.00	54
Wings Full-Cut - Toms		
Wings, V-Type, Tom		
Tails		
Mechanically Separated 4/	45.00	27
Thigh Meat - Frozen		

1/ CODES FOR LAST SIGNIFICANT TRADE (L.S.T.):

M=MONDAY T=TUESDAY W=WEDNESDAY R=THURSDAY F=FRIDAY

2/ Breasts are bagged; rib, back, and wing meat included; and basted.

3/ Boneless and skinless without tenderloins.

4/ 15-20% fat with skin added.