



United States
Department of
Agriculture

National
Agricultural
Statistics
Service



Sp Sy 9 (07)

Farm Computer Usage and Ownership

August 2007

USDA



Internet Access On U.S. Farms Up 4 Percentage Points

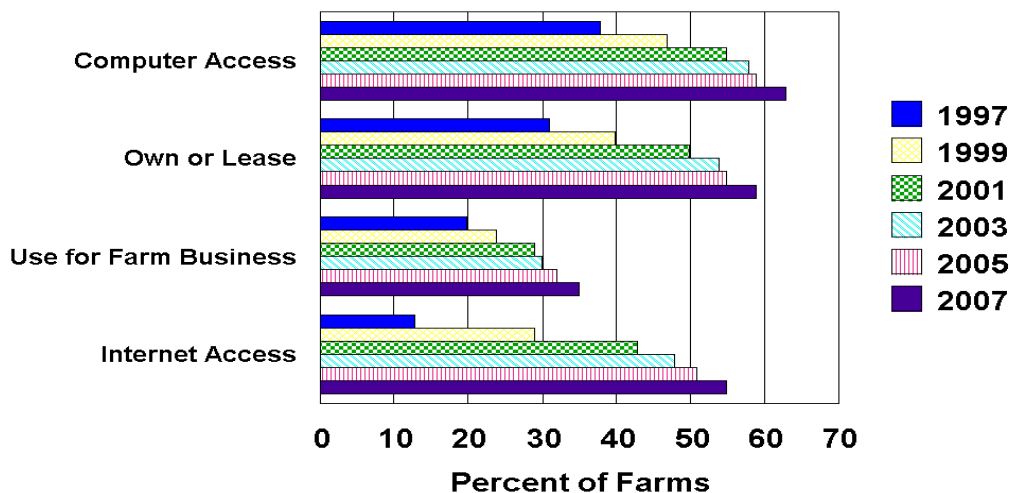
High-speed Internet access methods, such as DSL, cable, satellite, and wireless, have become much more available to Internet users in the farm sector since 2005. The proportion of operators using DSL doubled in 2007, at 27 percent, compared with the 2005 level of 13 percent. Cable, satellite, and wireless were each reported as the primary access methods on 7 percent of those U.S. farms with Internet access; with satellite and wireless methods both at virtually double their 2005 levels. Dialup was again the most common method of accessing the Internet, with nearly half (47 percent) of U.S. farms still using it, down from 69 percent in 2005.

A total of 55 percent of U.S. farms now have Internet access, compared with 51 percent in 2005. Sixty-three percent of farms have access to a computer in 2007, compared with the 2005 level of 59 percent. The proportion of U.S. farms owning or leasing a computer in 2007, at 59 percent, is up slightly from 55 percent in 2005. Farms using computers for their farm business increased 3 percentage points from 2005 to 35 percent in 2007.

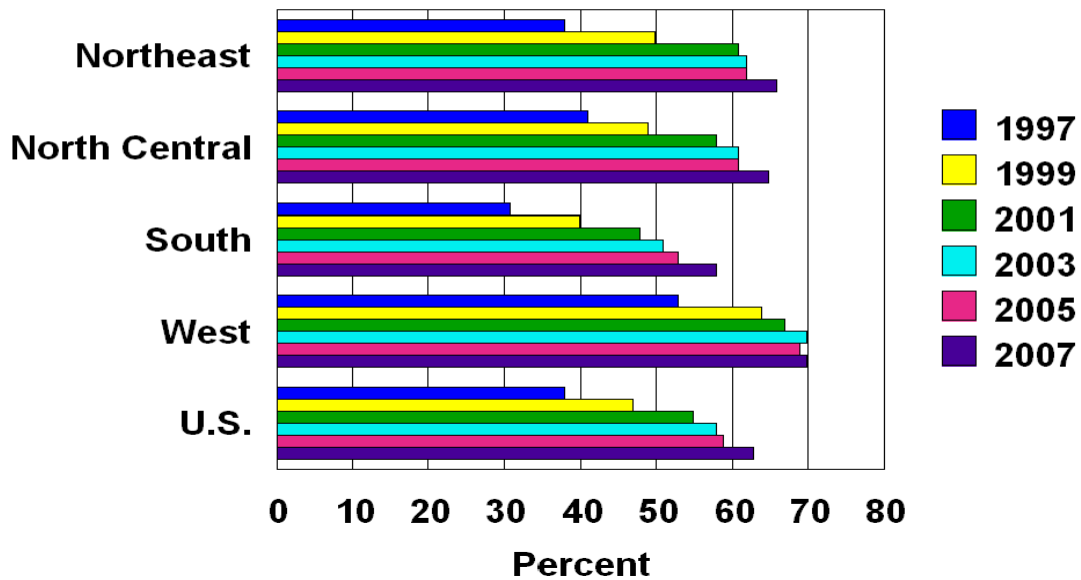
In 2007, 80 percent of U.S. farms with sales and government payments of \$250,000 or more have access to a computer, 78 percent own or lease a computer, 66 percent are using a computer for their farm business, and 75 percent have Internet access. For farms with sales and government payments between \$100,000 and \$249,999, the figures are: 70 percent have access to a computer, 66 percent own or lease a computer, 51 percent are using a computer for their farm business, and 61 percent have Internet access. For farms with sales and government payments between \$10,000 and \$99,999, 62 percent reported having computer access, 57 percent own or lease a computer, 36 percent use a computer for their farm business, and 53 percent have Internet access.

For crop farms, 64 percent have computer access and 37 percent use a computer for their farm business in 2007, up 4 and 3 percentage points from 2005, respectively. Internet access for crop farms has increased to 56 percent in 2007, compared to 52 percent in 2005. For livestock farms, 62 percent have computer access and 55 percent have Internet access. The use of a computer for farm business has increased to 33 percent for livestock farms, up 3 points from 2005.

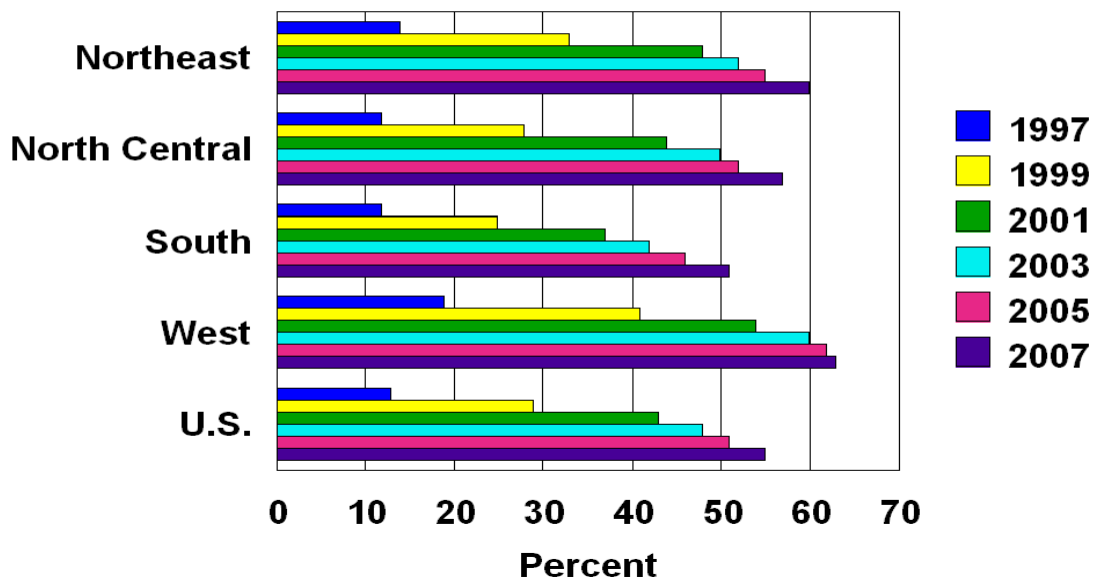
Farm Computer Usage and Ownership United States 1997 - 2007



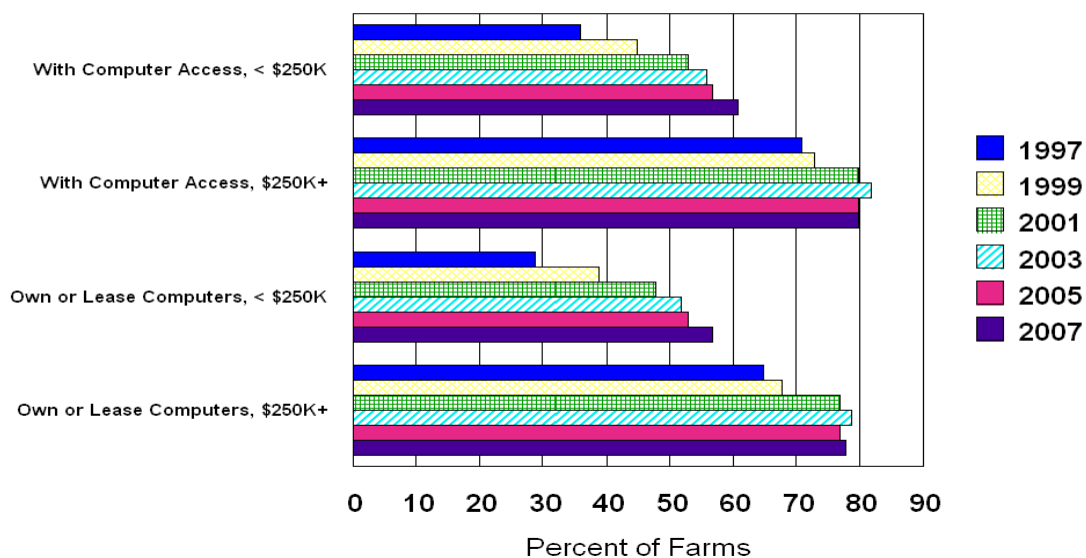
Percent of Farms With Computer Access By Region & U.S., 1997-2007



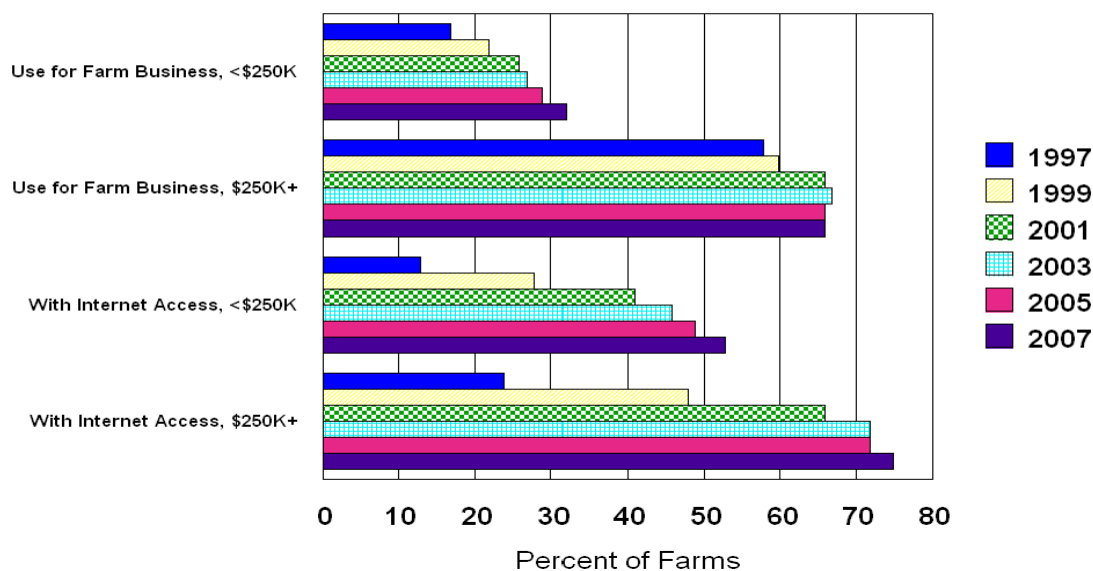
Percent of Farms With Internet Access By Region & U.S., 1997-2007



Computer Access and Ownership By Economic Class, 1997-2007, U.S. Level



Farm Business Usage and Internet Access By Economic Class, 1997-2007



**Farm Computer Usage:
By State and United States, 2003, 2005, and 2007**

State	Farms					
	With Computer Access			That Own or Lease Computers		
	2003	2005	2007	2003	2005	2007
	<i>Percent</i>	<i>Percent</i>	<i>Percent</i>	<i>Percent</i>	<i>Percent</i>	<i>Percent</i>
AL	49	48	48	44	47	47
AZ ¹	63	60	60	58	60	60
AR	51	50	59	49	48	56
CA	64	58	61	60	54	54
CO	69	68	68	65	66	65
FL	56	61	61	50	60	59
GA	37	42	46	36	38	44
ID	81	77	83	77	75	83
IL	63	64	64	59	60	61
IN	59	58	64	58	56	62
IA	63	64	66	59	61	64
KS	62	57	68	59	54	64
KY	32	36	50	30	34	45
LA	53	51	57	47	46	55
MD ²	50	58	64	45	56	60
MI	61	62	69	54	57	63
MN	64	65	71	60	60	68
MS	37	45	51	35	42	44
MO	56	55	56	51	50	54
MT	72	75	75	70	73	75
NE	61	65	66	59	62	62
NH ³	72	78	78	61	76	75
NJ	59	60	69	56	60	67
NM	52	62	60	51	62	60
NY	66	63	63	58	59	59
NC	52	59	61	47	56	58
ND	61	65	67	58	63	66
OH	64	56	56	57	53	54
OK	48	55	55	44	50	52
OR	78	80	80	76	78	76
PA	55	55	62	48	53	58
SC	49	52	66	48	47	65
SD	61	66	65	54	62	60
TN	50	55	60	41	45	48
TX	58	58	62	55	55	60
UT	67	72	73	60	64	69
VA	65	65	65	62	60	60
WA	65	70	75	57	67	74
WV	60	60	64	54	55	60
WI	62	64	69	56	60	64
WY	71	79	82	70	71	81
US ⁴	58	59	63	54	55	59

¹ Includes AZ and NV.

² Includes DE and MD.

³ Includes CT, ME, MA, NH, RI, and VT.

⁴ Excludes AK and HI.

**Farm Computer Usage:
By State and United States, 2003, 2005, and 2007 (cont.)**

State	Farms					
	Using Computers for Farm Business			With Internet Access		
	2003	2005	2007	2003	2005	2007
	<i>Percent</i>	<i>Percent</i>	<i>Percent</i>	<i>Percent</i>	<i>Percent</i>	<i>Percent</i>
AL	26	25	24	39	40	40
AZ ¹	27	29	33	55	50	55
AR	26	24	33	37	44	52
CA	38	38	42	55	52	54
CO	39	41	40	60	62	60
FL	29	39	37	49	57	55
GA	19	19	26	26	36	42
ID	46	47	50	62	68	68
IL	39	40	40	53	56	55
IN	34	35	38	51	51	58
IA	40	42	42	49	55	56
KS	37	35	39	48	49	57
KY	15	17	24	24	30	39
LA	19	20	25	44	46	55
MD ²	30	31	36	42	48	58
MI	27	35	34	49	54	64
MN	34	35	38	52	56	64
MS	17	23	22	29	37	41
MO	30	30	29	48	45	50
MT	44	45	45	63	70	70
NE	38	41	44	48	52	55
NH ³	40	52	50	59	65	67
NJ	48	45	45	57	60	67
NM	21	20	20	40	55	55
NY	35	34	36	56	55	59
NC	24	30	32	43	52	55
ND	39	41	44	53	58	63
OH	31	29	32	50	46	52
OK	22	28	32	39	48	51
OR	49	50	50	72	70	70
PA	25	27	29	48	47	55
SC	19	25	36	35	44	52
SD	33	40	40	45	55	55
TN	18	20	24	41	45	52
TX	26	27	33	50	51	57
UT	32	40	50	54	56	65
VA	34	28	28	57	55	55
WA	39	40	50	54	66	71
WV	19	31	32	55	51	53
WI	31	34	38	51	56	63
WY	32	35	43	57	77	75
US ⁴	30	32	35	48	51	55

¹ Includes AZ and NV.

² Includes DE and MD.

³ Includes CT, ME, MA, NH, RI, and VT.

⁴ Excludes AK and HI.

**Use of Internet by State
and United States, 2003, 2005, and 2007**

State	Farms					
	Purchase Agricultural Inputs Over Internet ¹			Conduct Agricultural Marketing Activities Over Internet ²		
	2003	2005	2007	2003	2005	2007
	<i>Percent</i>	<i>Percent</i>	<i>Percent</i>	<i>Percent</i>	<i>Percent</i>	<i>Percent</i>
AL	6	7	8	5	6	5
AZ ³	5	8	13	2	9	8
AR	6	5	9	5	5	4
CA	14	12	15	12	10	11
CO	13	12	9	10	13	8
FL	10	16	19	12	15	10
GA	7	4	9	4	4	5
ID	9	10	12	13	11	10
IL	8	8	10	9	13	14
IN	9	10	14	10	9	18
IA	9	6	9	9	12	16
KS	6	7	10	5	7	8
KY	3	7	8	3	4	6
LA	7	4	6	3	6	3
MD ⁴	14	15	19	7	6	8
MI	8	11	15	5	8	7
MN	7	9	11	11	12	12
MS	4	6	5	4	4	4
MO	5	6	7	7	8	5
MT	11	10	13	12	12	16
NE ⁵	8	7	8	9	10	11
NH ⁵	19	25	23	12	15	15
NJ	30	25	27	9	14	15
NM	7	7	7	3	6	5
NY	13	15	19	12	7	7
NC	6	9	15	11	8	11
ND	8	6	9	10	10	10
OH	9	9	12	6	11	11
OK	6	8	11	5	6	11
OR	20	17	21	12	14	12
PA	11	11	11	7	7	7
SC	7	9	15	6	6	15
SD	6	7	7	7	9	12
TN	5	6	7	6	5	7
TX	8	8	9	7	7	8
UT	16	15	17	13	15	17
VA	8	13	13	9	8	7
WA	11	15	26	18	15	14
WV	6	14	14	10	4	4
WI	7	9	12	8	10	12
WY	9	12	18	4	8	8
US ⁶	8	9	11	8	9	10

¹ Agricultural inputs include seed, fertilizer, chemicals, veterinarian supplies, feed, machinery, replacement parts, farm supplies, office equipment, etc.

² Agricultural marketing activities include direct sales of commodities, on-line crop and livestock auctions, on-line market advisory services, commodity price tracking, etc.

³ Includes AZ and NV.

⁴ Includes DE and MD.

⁵ Includes CT, ME, MA, NH, RI, and VT.

⁶ Excludes AK and HI.

**Internet Access of Reports, Services, and Web sites
By State and United States, 2003, 2005, and 2007¹**

State	Farms								
	Access USDA/NASS Reports Over Internet			Access Other USDA Reports/Services Over Internet			Access Other Federal Government Web sites Over Internet		
	2003	2005	2007	2003	2005	2007	2003	2005	2007
	<i>Percent</i>	<i>Percent</i>	<i>Percent</i>	<i>Percent</i>	<i>Percent</i>	<i>Percent</i>	<i>Percent</i>	<i>Percent</i>	<i>Percent</i>
AL	9	6	5	10	9	6	10	6	6
AZ ²	7	5	2	6	11	11	17	8	6
AR	8	6	4	9	8	6	8	9	13
CA	8	3	7	15	11	13	15	12	13
CO	8	6	6	8	10	9	13	18	11
FL	6	5	8	8	11	14	3	14	16
GA	4	2	2	5	5	7	5	5	6
ID	9	8	7	15	18	15	16	23	18
IL	7	9	11	14	17	16	11	13	12
IN	4	5	7	10	11	13	9	10	14
IA	9	8	10	14	15	15	13	12	11
KS	6	6	9	12	10	12	9	12	13
KY	5	2	3	7	5	7	5	4	5
LA	4	2	2	5	6	8	2	6	4
MD ³	4	2	6	7	9	12	10	15	22
MI	6	4	9	11	11	14	11	11	14
MN	9	6	7	13	12	12	12	10	10
MS	4	3	3	8	7	7	5	7	8
MO	6	4	5	13	10	10	9	7	9
MT	8	6	6	18	16	16	22	23	18
NE	7	8	7	15	17	14	12	14	13
NH ⁴	4	6	5	9	15	18	12	20	17
NJ	5	8	9	10	9	13	30	13	17
NM	3	5	6	4	9	4	18	19	5
NY	6	5	5	10	11	8	10	16	18
NC	6	5	6	11	10	12	10	12	14
ND	10	10	7	19	15	15	15	12	15
OH	6	5	3	9	8	8	16	8	8
OK	5	6	6	10	10	10	10	14	16
OR	7	5	4	10	12	11	20	18	15
PA	5	6	3	8	11	6	11	13	10
SC	3	6	4	6	11	8	6	13	11
SD	7	7	6	12	14	13	13	15	12
TN	4	5	5	6	8	8	7	8	8
TX	5	5	4	9	9	8	10	11	11
UT	10	9	8	12	20	15	15	18	14
VA	4	4	4	15	9	8	14	13	11
WA	10	3	7	15	13	15	19	16	18
WV	7	7	7	9	12	10	6	14	18
WI	4	7	8	9	14	14	8	17	16
WY	15	2	7	9	7	11	13	13	23
US ⁵	6	5	6	11	11	11	11	12	12

¹ Reference period for access and usage of USDA reports, research information, and services is the last 12 months prior to June 1 of survey year.

² Includes AZ and NV.

³ Includes DE and MD.

⁴ Includes CT, ME, MA, NH, RI, and VT.

⁵ Excludes AK and HI.

Conducting Business on the Internet and Usage of Toll-Free Customer Service Numbers By State and United States, 2003, 2005, and 2007

State	Farms					
	Conduct Business With Any USDA Web site			Conduct Business With Any Other Federal Government Web site		
	2003	2005	2007	2003	2005	2007
	<i>Percent</i>	<i>Percent</i>	<i>Percent</i>	<i>Percent</i>	<i>Percent</i>	<i>Percent</i>
AL	4	3	2	5	4	2
AZ ¹	1	4	6	6	3	1
AR	4	3	2	5	3	1
CA	6	5	6	8	5	5
CO	2	4	6	5	7	3
FL	1	4	4	3	9	2
GA	1	2	3	2	1	1
ID	6	6	3	11	6	4
IL	5	5	7	3	3	4
IN	2	4	5	2	2	3
IA	5	6	5	7	4	2
KS	2	4	3	4	3	3
KY	1	2	2	2	2	1
LA	1	1	2	1	1	1
MD ²	1	5	5	5	4	4
MI	2	3	6	6	2	2
MN	4	6	5	5	4	3
MS	2	1	3	2	1	3
MO	3	5	2	4	3	3
MT	6	4	3	10	2	3
NE	3	5	4	4	4	2
NH ³	2	9	3	11	6	7
NJ	7	7	6	3	6	3
NM	1	6	1	13	3	1
NY	2	1	1	4	*	4
NC	3	3	5	4	5	4
ND	5	6	5	7	3	3
OH	2	5	3	8	1	2
OK	4	3	4	4	3	5
OR	4	7	5	15	7	4
PA	1	3	2	5	3	3
SC	2	2	2	2	*	1
SD	3	5	4	5	4	3
TN	2	3	2	3	4	1
TX	2	3	4	5	3	4
UT	2	7	5	4	5	5
VA	4	3	2	7	4	2
WA	9	4	7	11	6	11
WV	*	1	1	3	*	1
WI	2	5	3	5	6	3
WY	4	5	5	2	*	6
US ⁴	3	4	4	5	3	3

*Less than one percent.

¹ Includes AZ and NV.

² Includes DE and MD.

³ Includes CT, ME, MA, NH, RI, and VT.

⁴ Excludes AK and HI.

Conducting Business on the Internet and Usage of Toll-Free Customer Service Numbers By State and United States, 2003, 2005, and 2007

State	Farms				
	Use Any USDA Toll-Free Customer Service Number			Conduct Business With Any Non-Agricultural Web site	
	2003	2005	2007	2005	2007
	<i>Percent</i>	<i>Percent</i>	<i>Percent</i>	<i>Percent</i>	<i>Percent</i>
AL	6	4	2	16	14
AZ ¹	*	3	8	26	24
AR	5	2	2	21	18
CA	4	3	4	31	32
CO	2	5	2	38	27
FL	1	6	5	36	32
GA	2	3	2	11	17
ID	3	5	1	41	49
IL	4	5	6	29	30
IN	2	2	3	24	38
IA	4	4	2	28	28
KS	2	8	3	28	31
KY	2	3	2	13	13
LA	1	1	3	18	24
MD ²	4	5	5	25	38
MI	4	7	3	24	36
MN	3	4	5	27	33
MS	2	4	5	17	17
MO	4	2	3	17	22
MT	11	5	7	43	38
NE	5	5	5	29	31
NH ³	4	3	13	48	41
NJ	4	11	3	27	41
NM	9	3	*	40	21
NY	3	3	4	31	27
NC	4	3	6	26	25
ND	4	4	2	25	34
OH	8	7	2	26	20
OK	3	5	5	20	27
OR	9	6	2	41	31
PA	4	5	3	24	24
SC	4	6	9	22	22
SD	4	6	8	28	28
TN	3	5	4	19	18
TX	3	5	3	24	28
UT	11	8	2	45	36
VA	11	4	5	26	26
WA	8	6	7	41	45
WV	2	9	5	20	30
WI	6	6	5	35	36
WY	5	8	8	36	46
US ⁴	4	5	4	26	28

* Less than one percent.

¹ Includes AZ and NV.

² Includes DE and MD.

³ Includes CT, ME, MA, NH, RI, and VT.

⁴ Excludes AK and HI.

Primary Method of Internet Access ¹
By State and United States, 2005 and 2007

State	Dialup		DSL		Cable	
	2005	2007	2005	2007	2005	2007
	<i>Percent</i>	<i>Percent</i>	<i>Percent</i>	<i>Percent</i>	<i>Percent</i>	<i>Percent</i>
AL	84	55	3	23	12	10
AZ ²	58	47	10	17	3	7
AR	70	56	22	22	4	4
CA	57	36	19	21	7	12
CO	62	36	12	16	2	5
FL	53	28	12	50	24	11
GA	71	27	13	56	8	9
ID	73	42	10	24	1	3
IL	72	46	11	20	4	4
IN	86	54	4	19	3	7
IA	70	45	17	30	3	4
KS	62	41	17	30	9	9
KY	62	40	15	32	5	8
LA	63	53	21	23	7	8
MD ³	68	52	10	25	15	10
MI	68	60	7	20	10	11
MN	67	45	17	30	2	2
MS	79	57	8	22	1	5
MO	75	55	11	31	2	2
MT	70	43	17	34	1	2
NE ⁴	64	34	14	33	5	4
NH ⁴	62	33	12	31	7	26
NJ	46	22	21	35	26	30
NM	56	28	26	41	4	3
NY	54	44	17	18	10	21
NC	67	40	17	35	6	11
ND	62	35	21	40	4	8
OH	82	52	12	20	3	10
OK	67	41	14	30	3	5
OR	67	52	9	15	13	13
PA	68	54	19	31	8	6
SC	76	55	12	29	5	6
SD	68	38	15	35	3	3
TN	71	62	8	13	9	8
TX	73	52	13	24	4	4
UT	71	31	12	27	2	6
VA	79	65	5	17	4	8
WA	77	34	9	38	3	8
WV	76	53	12	19	5	11
WI	74	52	15	32	3	3
WY	63	55	9	23	10	5
US ⁵	69	47	13	27	6	7

* Less than one percent.

¹ Primary method of internet access for those operators who have access to the internet.

² Includes AZ and NV.

³ Includes DE and MD.

⁴ Includes CT, ME, MA, NH, RI, and VT.

⁵ Excludes AK and HI.

**Primary Method of Internet Access ¹
By State and United States, 2005 and 2007**

State	Satellite		Wireless		Other/ Unknown	
	2005	2007	2005	2007	2005	2007
	<i>Percent</i>	<i>Percent</i>	<i>Percent</i>	<i>Percent</i>	<i>Percent</i>	<i>Percent</i>
AL	1	7	*	1	*	4
AZ ²	11	21	15	5	3	3
AR	2	11	*	2	2	5
CA	6	11	5	13	6	7
CO	8	14	8	15	8	14
FL	5	5	2	3	4	3
GA	1	5	1	0	6	3
ID	6	10	4	14	6	7
IL	3	9	6	17	4	4
IN	4	8	1	10	2	2
IA	1	7	7	8	2	6
KS	4	10	4	9	4	1
KY	3	12	3	3	12	5
LA	2	9	2	2	5	5
MD ³	1	3	2	2	4	8
MI	5	1	2	6	8	2
MN	2	5	5	15	7	3
MS	3	10	*	1	9	5
MO	5	5	1	3	6	4
MT	9	12	1	8	2	1
NE ⁴	4	10	8	13	5	6
NH ⁴	3	3	4	1	12	6
NJ	0	5	*	0	7	8
NM	5	3	9	21	0	4
NY	6	4	2	4	11	9
NC	2	7	2	3	6	4
ND	3	9	5	6	5	2
OH	1	6	1	7	1	5
OK	6	10	3	10	7	4
OR	5	5	4	11	2	4
PA	2	1	*	1	3	7
SC	7	5	0	1	*	4
SD	4	4	3	14	7	6
TN	2	3	*	1	10	13
TX	4	9	3	8	3	3
UT	1	12	6	10	8	14
VA	1	7	1	3	10	0
WA	6	11	3	5	2	4
WV	*	6	1	1	6	10
WI	1	4	2	3	5	6
WY	10	9	7	7	1	1
US ⁵	4	7	3	7	5	5

*Less than one percent.

¹ Primary method of internet access for those operators who have access to the internet.

² Includes AZ and NV.

³ Includes DE and MD.

⁴ Includes CT, ME, MA, NH, RI, and VT.

⁵ Excludes AK and HI.

**Farm Computer Usage: by Economic Class ¹, Type of Farm,
Region and United States, 2003, 2005, and 2007**

Region	Farms					
	With Computer Access			That Own or Lease Computers		
	2003	2005	2007	2003	2005	2007
	<i>Percent</i>	<i>Percent</i>	<i>Percent</i>	<i>Percent</i>	<i>Percent</i>	<i>Percent</i>
Northeast ²	62	62	66	53	60	63
\$1,000-9,999	61	60	66	51	58	63
\$10,000-99,999	62	62	62	53	58	58
\$100,000 & Over	65	70	71	60	67	69
\$100,000-249,999	52	67	68	46	63	67
\$250,000 & Over	85	75	76	81	73	72
Crop Farms	66	60	65	59	59	62
Livestock Farms	59	64	66	50	61	63
North Central ³	61	61	65	57	57	62
\$1,000-9,999	57	58	62	52	53	59
\$10,000-99,999	56	56	59	52	52	55
\$100,000 & Over	75	76	76	72	74	73
\$100,000-249,999	70	71	69	66	69	67
\$250,000 & Over	82	82	82	80	80	80
Crop Farms	61	62	65	57	58	62
Livestock Farms	61	60	64	57	56	61
South ⁴	51	53	58	47	49	54
\$1,000-9,999	46	49	54	42	46	51
\$10,000-99,999	55	55	58	50	50	55
\$100,000 & Over	73	73	73	69	69	71
\$100,000-249,999	68	68	68	63	63	65
\$250,000 & Over	77	77	78	74	74	77
Crop Farms	50	53	57	46	50	54
Livestock Farms	51	53	58	47	49	54
West ⁵	70	69	70	66	66	67
\$1,000-9,999	67	69	69	63	66	66
\$10,000-99,999	67	66	66	62	62	64
\$100,000 & Over	81	76	75	79	74	72
\$100,000-249,999	77	73	70	75	71	66
\$250,000 & Over	84	78	78	82	76	76
Crop Farms	69	67	67	63	65	65
Livestock Farms	70	71	72	66	67	68
US ⁶	58	59	63	54	55	59
\$1,000-9,999	53	55	60	49	52	57
\$10,000-99,999	57	58	62	52	52	57
\$100,000 & Over	75	75	75	72	72	72
\$100,000-249,999	70	70	70	66	67	66
\$250,000 & Over	82	80	80	79	77	78
Crop Farms	60	60	64	55	57	60
Livestock Farms	56	58	62	53	54	58

¹ Economic class refers to sales and government payments received during the previous year.

² Includes CT, ME, MA, NH, NJ, NY, PA, RI, and VT.

³ Includes IL, IN, IA, KS, MI, MN, MO, NE, ND, OH, SD, and WI.

⁴ Includes AL, AR, DE, FL, GA, KY, LA, MD, MS, NC, OK, SC, TN, TX, VA, and WV.

⁵ Includes AZ, CA, CO, ID, MT, NV, NM, OR, UT, WA, and WY.

⁶ Excludes AK and HI.

**Farm Computer Usage: by Economic Class ¹, Type of Farm,
Region and United States, 2003, 2005, and 2007 (cont.)**

Region	Farms					
	Using Computers for Farm Business			With Internet Access		
	2003	2005	2007	2003	2005	2007
	<i>Percent</i>	<i>Percent</i>	<i>Percent</i>	<i>Percent</i>	<i>Percent</i>	<i>Percent</i>
Northeast ²	33	36	37	52	55	60
\$1,000-9,999	25	26	27	50	54	60
\$10,000-99,999	40	45	45	50	55	58
\$100,000 & Over	50	56	55	52	59	62
\$100,000-249,999	36	50	49	38	53	58
\$250,000 & Over	71	65	64	73	68	68
Crop Farms	39	37	37	58	54	59
Livestock Farms	30	36	37	46	56	61
North Central ³	34	36	38	50	52	57
\$1,000-9,999	21	24	24	47	50	55
\$10,000-99,999	33	34	36	45	45	51
\$100,000 & Over	57	59	60	62	67	70
\$100,000-249,999	50	50	52	55	60	63
\$250,000 & Over	65	68	69	72	74	77
Crop Farms	34	37	39	50	53	57
Livestock Farms	33	35	35	49	50	57
South ⁴	23	25	30	42	46	51
\$1,000-9,999	16	18	24	38	43	48
\$10,000-99,999	28	28	33	44	45	52
\$100,000 & Over	55	55	55	60	62	67
\$100,000-249,999	44	48	48	52	55	61
\$250,000 & Over	65	62	61	68	69	72
Crop Farms	24	26	30	41	46	50
Livestock Farms	22	25	30	42	45	52
West ⁵	41	40	44	60	62	63
\$1,000-9,999	31	31	36	57	62	63
\$10,000-99,999	42	43	46	58	57	58
\$100,000 & Over	68	62	61	70	70	69
\$100,000-249,999	61	56	52	63	63	63
\$250,000 & Over	74	67	68	76	75	74
Crop Farms	43	42	43	59	60	61
Livestock Farms	39	39	44	60	64	64
US ⁶	30	32	35	48	51	55
\$1,000-9,999	20	22	25	44	48	52
\$10,000-99,999	32	35	36	47	47	53
\$100,000 & Over	58	58	59	62	65	68
\$100,000-249,999	49	51	51	54	59	61
\$250,000 & Over	67	66	66	72	72	75
Crop Farms	33	34	37	49	52	56
Livestock Farms	27	30	33	47	50	55

¹ Economic class refers to sales and government payments received during the previous year.

² Includes CT, ME, MA, NH, NJ, NY, PA, RI, and VT.

³ Includes IL, IN, IA, KS, MI, MN, MO, NE, ND, OH, SD, and WI.

⁴ Includes AL, AR, DE, FL, GA, KY, LA, MD, MS, NC, OK, SC, TN, TX, VA, and WV.

⁵ Includes AZ, CA, CO, ID, MT, NV, NM, OR, UT, WA, and WY.

⁶ Excludes AK and HI.

**Use of Internet by Economic Class ¹, Type of Farm,
Region and United States, 2003, 2005, and 2007**

Region	Farms					
	Purchase Agricultural Inputs Over Internet ²			Conduct Agricultural Marketing Activities Over Internet ³		
	2003	2005	2007	2003	2005	2007
	<i>Percent</i>	<i>Percent</i>	<i>Percent</i>	<i>Percent</i>	<i>Percent</i>	<i>Percent</i>
Northeast ⁴	15	16	17	9	9	10
\$1,000-9,999	14	14	14	4	5	5
\$10,000-99,999	20	18	20	16	16	11
\$100,000 & Over	13	20	22	12	16	22
\$100,000-249,999	9	20	24	4	12	16
\$250,000 & Over	20	20	20	24	23	30
Crop Farms	22	17	16	7	8	8
Livestock Farms	12	15	18	10	10	12
North Central ⁵	7	8	10	8	10	11
\$1,000-9,999	5	6	7	4	5	5
\$10,000-99,999	7	7	9	7	9	11
\$100,000 & Over	12	12	16	16	20	22
\$100,000-249,999	9	9	14	13	16	18
\$250,000 & Over	15	16	19	21	25	25
Crop Farms	7	8	10	8	11	13
Livestock Farms	7	8	11	8	9	9
South ⁶	7	8	10	6	6	7
\$1,000-9,999	5	6	8	4	4	5
\$10,000-99,999	8	8	11	6	7	10
\$100,000 & Over	15	18	20	13	18	18
\$100,000-249,999	13	16	16	11	16	14
\$250,000 & Over	16	19	23	17	21	21
Crop Farms	6	8	10	5	6	8
Livestock Farms	7	8	10	5	7	7
West ⁷	13	12	16	11	12	11
\$1,000-9,999	10	9	14	6	7	7
\$10,000-99,999	15	14	15	13	13	11
\$100,000 & Over	18	20	21	25	22	21
\$100,000-249,999	13	17	17	23	19	17
\$250,000 & Over	22	22	24	27	24	24
Crop Farms	12	10	14	11	11	10
Livestock Farms	14	14	17	12	12	12
US ⁸	8	9	11	8	9	10
\$1,000-9,999	6	7	9	4	5	5
\$10,000-99,999	9	9	11	8	9	10
\$100,000 & Over	13	16	18	17	19	20
\$100,000-249,999	10	13	15	13	16	16
\$250,000 & Over	17	18	21	21	23	24
Crop Farms	9	9	11	8	9	10
Livestock Farms	8	9	12	7	8	9

¹ Economic class refers to sales and government payments received during the previous year.

² Agricultural inputs include seed, fertilizer, chemicals, veterinarian supplies, feed, machinery, replacement parts, farm supplies, office equipment, etc.

³ Agricultural marketing activities include direct sales of commodities, on-line crop and livestock auctions, on-line market advisory services, commodity price tracking, etc.

⁴ Includes CT, ME, MA, NH, NJ, NY, PA, RI, and VT.

⁵ Includes IL, IN, IA, KS, MI, MN, MO, NE, ND, OH, SD, and WI.

⁶ Includes AL, AR, DE, FL, GA, KY, LA, MD, MS, NC, OK, SC, TN, TX, VA, and WV.

⁷ Includes AZ, CA, CO, ID, MT, NV, NM, OR, UT, WA, and WY.

⁸ Excludes AK and HI.

**Internet Access of Reports, Services, and Web sites by Economic Class ¹,
Type of Farm, Region and United States, 2003, 2005, and 2007**

State	Farms								
	Access USDA/NASS Reports Over Internet ²			Access Other USDA Reports/Services Over Internet ²			Access Other Federal Government Web sites Over Internet ²		
	2003	2005	2007	2003	2005	2007	2003	2005	2007
	<i>Percent</i>	<i>Percent</i>	<i>Percent</i>	<i>Percent</i>	<i>Percent</i>	<i>Percent</i>	<i>Percent</i>	<i>Percent</i>	<i>Percent</i>
Northeast ³	5	6	5	9	12	10	12	15	14
\$1,000-9,999	1	4	3	5	10	8	13	15	14
\$10,000-99,999	8	8	6	14	13	11	12	15	13
\$100,000 & Over	10	10	7	17	16	14	10	17	15
\$100,000-249,999	8	6	3	9	11	15	5	15	11
\$250,000 & Over	13	17	11	30	24	13	18	20	20
Crop Farms	5	8	6	9	14	11	19	18	15
Livestock Farms	4	4	4	8	10	9	9	13	13
North Central ⁴	7	6	8	12	13	13	11	11	12
\$1,000-9,999	2	3	3	4	6	6	8	8	8
\$10,000-99,999	6	7	7	12	12	12	11	11	11
\$100,000 & Over	13	12	15	23	24	25	18	17	19
\$100,000-249,999	10	9	13	18	21	20	14	14	16
\$250,000 & Over	16	15	17	29	28	29	23	21	22
Crop Farms	7	7	9	13	14	15	12	12	12
Livestock Farms	5	6	5	9	11	11	10	11	12
South ⁵	5	4	4	9	8	8	8	10	11
\$1,000-9,999	3	3	3	5	5	6	6	9	9
\$10,000-99,999	5	5	5	11	10	10	10	10	11
\$100,000 & Over	11	13	11	22	24	19	15	19	20
\$100,000-249,999	8	11	10	16	19	16	12	17	17
\$250,000 & Over	15	15	13	29	29	23	20	22	22
Crop Farms	4	5	5	9	10	10	8	10	12
Livestock Farms	5	4	4	8	8	8	8	10	10
West ⁶	8	5	6	12	13	12	17	17	14
\$1,000-9,999	4	3	3	6	8	7	15	15	11
\$10,000-99,999	10	5	6	13	14	13	15	18	14
\$100,000 & Over	17	11	14	28	24	22	26	22	22
\$100,000-249,999	16	10	11	25	20	17	18	18	17
\$250,000 & Over	18	12	16	31	27	26	31	25	26
Crop Farms	8	5	8	13	14	13	17	18	16
Livestock Farms	8	4	5	11	11	11	17	16	13
US ⁷	6	5	6	11	11	11	11	12	12
\$1,000-9,999	3	3	3	5	6	6	8	10	10
\$10,000-99,999	6	6	6	12	12	11	11	12	11
\$100,000 & Over	13	12	13	23	23	22	18	19	19
\$100,000-249,999	10	10	11	18	19	18	14	16	15
\$250,000 & Over	16	14	15	30	28	26	24	22	22
Crop Farms	6	6	8	12	13	13	12	13	13
Livestock Farms	5	5	4	9	9	9	10	11	11

¹ Economic class refers to sales and government payments received during the previous year.

² Reference period for access and usage of USDA reports, research information, and services is the last 12 months prior to June 1 of survey year.

³ Includes CT, ME, MA, NH, NJ, NY, PA, RI, and VT.

⁴ Includes IL, IN, IA, KS, MI, MN, MO, NE, ND, OH, SD, and WI.

⁵ Includes AL, AR, DE, FL, GA, KY, LA, MD, MS, NC, OK, SC, TN, TX, VA, and WV.

⁶ Includes AZ, CA, CO, ID, MT, NV, NM, OR, UT, WA, and WY.

⁷ Excludes AK and HI.

**Conducting Business on the Internet and Usage of Toll-Free Customer Service Numbers
By Economic Class ¹, Type of Farm, Region and United States, 2003, 2005, and 2007**

State	Farms					
	Conduct Business With Any USDA Web site			Conduct Business With Any Other Federal Government Web site		
	2003	2005	2007	2003	2005	2007
	<i>Percent</i>	<i>Percent</i>	<i>Percent</i>	<i>Percent</i>	<i>Percent</i>	<i>Percent</i>
Northeast ²	2	4	2	6	3	4
\$1,000-9,999	*	2	1	5	2	3
\$10,000-99,999	3	5	3	9	4	4
\$100,000 & Over	7	9	3	5	8	7
\$100,000-249,999	1	9	2	2	7	2
\$250,000 & Over	16	8	4	11	10	14
Crop Farms	3	5	3	9	5	4
Livestock Farms	1	3	2	4	2	4
North Central ³	3	5	4	5	3	3
\$1,000-9,999	1	3	1	4	2	1
\$10,000-99,999	3	4	3	5	3	3
\$100,000 & Over	7	10	10	7	5	5
\$100,000-249,999	5	8	8	5	4	4
\$250,000 & Over	10	13	12	10	6	6
Crop Farms	4	6	5	5	3	3
Livestock Farms	2	4	3	5	3	2
South ⁴	2	3	3	4	3	3
\$1,000-9,999	2	2	2	3	2	2
\$10,000-99,999	3	3	4	4	3	3
\$100,000 & Over	7	9	8	8	7	6
\$100,000-249,999	7	7	6	7	6	4
\$250,000 & Over	8	10	9	9	8	7
Crop Farms	3	3	4	4	3	3
Livestock Farms	2	3	3	4	3	3
West ⁵	5	5	5	10	5	5
\$1,000-9,999	3	3	2	10	4	3
\$10,000-99,999	7	5	5	8	5	6
\$100,000 & Over	9	11	11	10	6	8
\$100,000-249,999	6	9	8	6	5	4
\$250,000 & Over	11	12	14	13	7	11
Crop Farms	5	7	7	8	5	6
Livestock Farms	4	4	4	10	4	3
US ⁶	3	4	4	5	3	3
\$1,000-9,999	2	2	2	5	2	2
\$10,000-99,999	3	4	4	5	3	4
\$100,000 & Over	8	10	9	7	6	6
\$100,000-249,999	5	8	7	5	5	4
\$250,000 & Over	10	12	11	10	7	8
Crop Farms	4	5	5	6	3	4
Livestock Farms	2	3	3	5	3	3

* Less than one percent.

¹ Economic class refers to sales and government payments received during the previous year.

² Includes CT, ME, MA, NH, NJ, NY, PA, RI, and VT.

³ Includes IL, IN, IA, KS, MI, MN, MO, NE, ND, OH, SD, and WI.

⁴ Includes AL, AR, DE, FL, GA, KY, LA, MD, MS, NC, OK, SC, TN, TX, VA, and WV.

⁵ Includes AZ, CA, CO, ID, MT, NV, NM, OR, UT, WA, and WY.

⁶ Excludes AK and HI.

**Conducting Business on the Internet and Usage of Toll-Free Customer Service Numbers
By Economic Class ¹, Type of Farm, Region and United States, 2003, 2005, and 2007**

State	Farms				
	Use Any USDA Toll-Free Customer Service Number			Conduct Business With Any Non-Agricultural Web site	
	2003	2005	2007	2005	2007
	<i>Percent</i>	<i>Percent</i>	<i>Percent</i>	<i>Percent</i>	<i>Percent</i>
Northeast ²	4	4	6	31	30
\$1,000-9,999	2	3	4	31	28
\$10,000-99,999	4	4	6	34	31
\$100,000 & Over	7	10	12	29	34
\$100,000-249,999	8	7	13	24	28
\$250,000 & Over	4	14	10	37	41
Crop Farms	4	5	6	33	30
Livestock Farms	4	4	6	30	29
North Central ³	4	5	4	27	30
\$1,000-9,999	3	3	2	25	28
\$10,000-99,999	4	5	3	22	26
\$100,000 & Over	6	7	7	35	39
\$100,000-249,999	5	7	5	28	32
\$250,000 & Over	8	8	8	44	46
Crop Farms	4	5	4	26	31
Livestock Farms	4	5	4	27	29
South ⁴	3	4	4	21	23
\$1,000-9,999	2	3	3	20	21
\$10,000-99,999	5	4	4	20	23
\$100,000 & Over	7	10	8	34	35
\$100,000-249,999	7	9	8	29	33
\$250,000 & Over	8	10	8	39	37
Crop Farms	4	5	4	22	23
Livestock Farms	3	4	3	21	24
West ⁵	6	5	4	38	35
\$1,000-9,999	5	4	2	36	32
\$10,000-99,999	8	5	5	35	32
\$100,000 & Over	8	7	6	46	44
\$100,000-249,999	8	7	5	43	36
\$250,000 & Over	7	7	8	49	50
Crop Farms	5	5	3	39	34
Livestock Farms	7	5	4	37	35
US ⁶	4	5	4	26	28
\$1,000-9,999	3	3	3	25	25
\$10,000-99,999	5	5	4	23	26
\$100,000 & Over	7	8	7	36	38
\$100,000-249,999	6	7	7	30	32
\$250,000 & Over	7	9	8	43	44
Crop Farms	4	5	4	28	29
Livestock Farms	4	4	4	25	27

* Less than one percent.

¹ Economic class refers to sales and government payments received during the previous year.

² Includes CT, ME, MA, NH, NJ, NY, PA, RI, and VT.

³ Includes IL, IN, IA, KS, MI, MN, MO, NE, ND, OH, SD, and WI.

⁴ Includes AL, AR, DE, FL, GA, KY, LA, MD, MS, NC, OK, SC, TN, TX, VA, and WV.

⁵ Includes AZ, CA, CO, ID, MT, NV, NM, OR, UT, WA, and WY.

⁶ Excludes AK and HI.

**Primary Method of Internet Access ¹
By Economic Class ²,
Region and United States, 2005 and 2007**

Region	Dialup		DSL		Cable	
	2005	2007	2005	2007	2005	2007
	<i>Percent</i>	<i>Percent</i>	<i>Percent</i>	<i>Percent</i>	<i>Percent</i>	<i>Percent</i>
Northeast ³	62	43	16	29	9	17
\$1,000-9,999	61	46	15	27	9	19
\$10,000-99,999	62	46	18	26	9	15
\$100,000 & Over	65	34	17	39	11	12
\$100,000-249,999	74	46	14	36	10	6
\$250,000 & Over	51	21	23	42	12	20
Crop Farms	66	38	15	25	12	27
Livestock Farms	59	48	17	32	8	8
North Central ⁴	71	48	13	28	4	5
\$1,000-9,999	76	52	12	28	3	5
\$10,000-99,999	69	49	14	28	6	7
\$100,000 & Over	67	41	14	29	4	3
\$100,000-249,999	72	46	11	28	4	3
\$250,000 & Over	62	37	17	31	4	3
Crop Farms	69	45	14	28	5	6
Livestock Farms	74	52	12	27	3	4
South ⁵	70	49	13	27	6	7
\$1,000-9,999	73	51	11	26	5	7
\$10,000-99,999	70	48	13	28	7	7
\$100,000 & Over	62	43	18	32	8	7
\$100,000-249,999	64	43	18	34	10	6
\$250,000 & Over	60	43	17	30	7	7
Crop Farms	67	45	15	31	6	7
Livestock Farms	72	51	12	26	6	7
West ⁶	65	40	14	25	5	8
\$1,000-9,999	65	41	14	24	7	8
\$10,000-99,999	70	44	12	25	4	7
\$100,000 & Over	61	32	15	26	3	9
\$100,000-249,999	67	38	14	27	2	7
\$250,000 & Over	57	28	17	25	3	11
Crop Farms	63	35	16	25	4	7
Livestock Farms	68	44	12	24	7	8
US ⁷	69	47	13	27	6	7
\$1,000-9,999	72	49	12	27	5	7
\$10,000-99,999	69	48	14	27	6	8
\$100,000 & Over	65	40	15	30	5	5
\$100,000-249,999	70	44	13	30	5	4
\$250,000 & Over	60	36	18	30	5	6
Crop Farms	66	44	15	27	6	8
Livestock Farms	71	50	12	27	5	6

* Less than one percent.

¹ Primary method of internet access for those operators who have access to the internet.

² Economic class refers to sales and government payments received during the previous year.

³ Includes CT, ME, MA, NH, NJ, NY, PA, RI, and VT.

⁴ Includes IL, IN, IA, KS, MI, MN, MO, NE, ND, OH, SD, and WI.

⁵ Includes AL, AR, DE, FL, GA, KY, LA, MD, MS, NC, OK, SC, TN, TX, VA, and WV.

⁶ Includes AZ, CA, CO, ID, MT, NV, NM, OR, UT, WA, and WY.

⁷ Excludes AK and HI.

**Primary Method of Internet Access ¹
By Economic Class ²,
Region and United States, 2005 and 2007**

Region	Satellite		Wireless		Other/ Unknown	
	2005	2007	2005	2007	2005	2007
	<i>Percent</i>	<i>Percent</i>	<i>Percent</i>	<i>Percent</i>	<i>Percent</i>	<i>Percent</i>
Northeast ³	3	3	2	1	8	7
\$1,000-9,999	5	3	2	*	8	5
\$10,000-99,999	1	2	1	2	9	9
\$100,000 & Over	1	2	1	3	5	10
\$100,000-249,999	0	3	1	2	1	7
\$250,000 & Over	2	2	2	3	10	12
Crop Farms	*	2	1	2	6	6
Livestock Farms	5	3	2	1	9	8
North Central ⁴	3	6	4	9	5	4
\$1,000-9,999	2	5	2	6	5	4
\$10,000-99,999	3	5	3	7	5	4
\$100,000 & Over	4	9	7	14	4	4
\$100,000-249,999	3	8	6	11	4	4
\$250,000 & Over	4	10	8	16	5	3
Crop Farms	3	6	5	11	4	4
Livestock Farms	3	7	3	7	5	3
South ⁵	3	8	2	4	6	5
\$1,000-9,999	3	8	2	4	6	4
\$10,000-99,999	3	7	2	5	5	5
\$100,000 & Over	4	7	2	5	6	6
\$100,000-249,999	3	7	1	4	4	6
\$250,000 & Over	5	8	3	6	8	6
Crop Farms	3	6	3	5	6	6
Livestock Farms	3	8	2	4	5	4
West ⁶	7	10	5	11	4	6
\$1,000-9,999	8	9	3	10	3	8
\$10,000-99,999	6	10	5	11	3	3
\$100,000 & Over	5	13	9	13	7	7
\$100,000-249,999	5	10	5	10	7	8
\$250,000 & Over	5	14	11	16	7	6
Crop Farms	7	12	6	15	4	6
Livestock Farms	6	9	4	8	3	7
US ⁷	4	7	3	7	5	5
\$1,000-9,999	4	7	2	5	5	5
\$10,000-99,999	3	6	3	7	5	4
\$100,000 & Over	4	9	6	11	5	5
\$100,000-249,999	3	8	5	9	4	5
\$250,000 & Over	4	10	7	13	6	5
Crop Farms	4	7	4	9	5	5
Livestock Farms	4	7	3	5	5	5

* Less than one percent.

¹ Primary method of internet access for those operators who have access to the internet.

² Economic class refers to sales and government payments received during the previous year.

³ Includes CT, ME, MA, NH, NJ, NY, PA, RI, and VT.

⁴ Includes IL, IN, IA, KS, MI, MN, MO, NE, ND, OH, SD, and WI.

⁵ Includes AL, AR, DE, FL, GA, KY, LA, MD, MS, NC, OK, SC, TN, TX, VA, and WV.

⁶ Includes AZ, CA, CO, ID, MT, NV, NM, OR, UT, WA, and WY.

⁷ Excludes AK and HI.

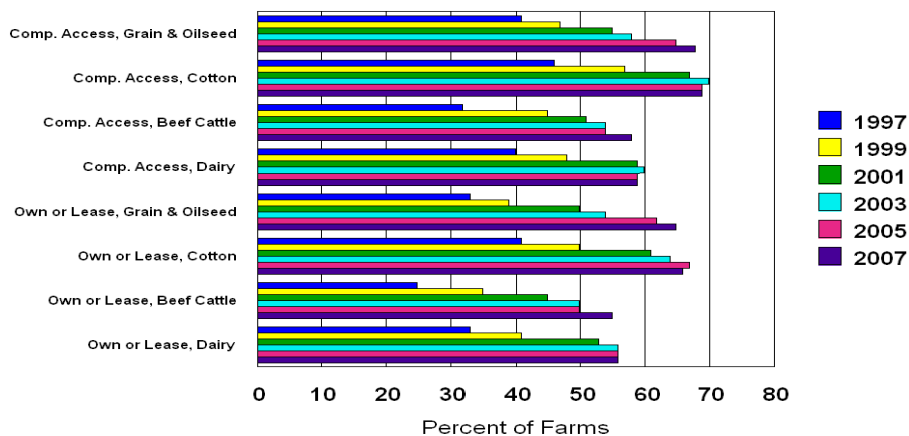
**Farm Computer Usage: by Economic Class ¹, Within Type of Farm,
United States, 2003, 2005, and 2007**

Type of Farm	Farms					
	With Computer Access			That Own or Lease Computers		
	2003	2005	2007	2003	2005	2007
	<i>Percent</i>	<i>Percent</i>	<i>Percent</i>	<i>Percent</i>	<i>Percent</i>	<i>Percent</i>
Grain & Oilseed Farms, US	58	65	68	54	62	65
\$1,000-249,999	55	61	64	51	57	60
\$250,000 & Over	81	81	83	78	79	81
Cotton Farms, US	70	69	69	64	67	66
\$1,000-249,999	62	61	57	55	57	56
\$250,000 & Over	83	78	80	80	78	79
Beef Cattle Farms, US	54	54	58	50	50	55
\$1,000-249,999	53	53	57	49	49	53
\$250,000 & Over	78	72	72	74	71	70
Dairy Farms, US	60	59	59	56	56	56
\$1,000-249,999	55	50	50	52	47	47
\$250,000 & Over	85	80	77	81	76	75
Crop Farms, US	60	60	64	55	57	60
\$1,000-249,999	56	58	62	52	54	56
\$250,000 & Over	82	82	82	79	79	81
Livestock Farms, US	56	58	62	53	54	58
\$1,000-249,999	54	56	61	51	52	57
\$250,000 & Over	81	77	77	78	75	73
All Farms, US ²	58	59	63	54	55	59
\$1,000-249,999	56	57	61	52	53	57
\$250,000 & Over	82	80	80	79	77	78

¹ Economic class refers to sales and government payments received during the previous year.

² Excludes AK and HI.

**Computer Access and Ownership
By Type of Farm, 1997-2007, U.S. Level**



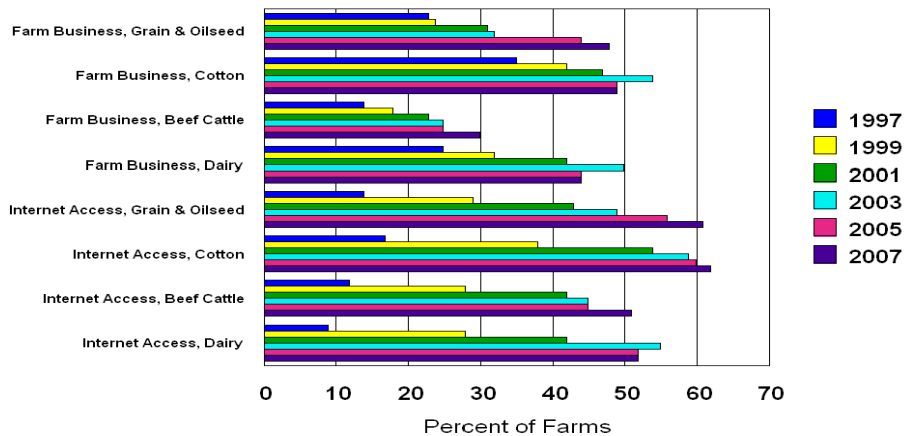
**Farm Computer Usage: by Economic Class ¹, Within Type of Farm,
United States, 2003, 2005, and 2007 (cont.)**

Type of Farm	Farms					
	Using Computers for Farm Business			With Internet Access		
	2003	2005	2007	2003	2005	2007
	<i>Percent</i>	<i>Percent</i>	<i>Percent</i>	<i>Percent</i>	<i>Percent</i>	<i>Percent</i>
Grain & Oilseed Farms, US	32	44	48	49	56	61
\$1,000-249,999	27	39	42	48	52	56
\$250,000 & Over	66	67	69	71	74	77
Cotton Farms, US	54	49	49	59	60	62
\$1,000-249,999	47	37	37	52	50	50
\$250,000 & Over	67	63	62	72	72	74
Beef Cattle Farms, US	25	25	30	45	45	51
\$1,000-249,999	22	24	29	43	43	50
\$250,000 & Over	64	59	56	66	66	65
Dairy Farms, US	50	44	44	55	52	52
\$1,000-249,999	33	32	32	41	41	43
\$250,000 & Over	71	66	67	75	71	71
Crop Farms, US	33	34	37	49	52	56
\$1,000-249,999	28	30	31	48	49	52
\$250,000 & Over	67	67	69	74	74	77
Livestock Farms, US	27	30	33	47	50	55
\$1,000-249,999	25	27	31	43	49	54
\$250,000 & Over	66	65	61	70	70	70
All Farms, US ²	30	32	35	48	51	55
\$1,000-249,999	27	29	32	46	49	53
\$250,000 & Over	67	66	66	72	72	75

¹ Economic class refers to sales and government payments received during the previous year.

² Excludes AK and HI.

**Farm Business Usage and Internet Access
By Type of Farm, 1997-2007, U.S. Level**



Primary Method of Internet Access ¹
By Economic Class ², Within Type of Farm, United States, 2005 and 2007

Type of Farm	Dialup		DSL		Cable	
	2005	2007	2005	2007	2005	2007
	<i>Percent</i>	<i>Percent</i>	<i>Percent</i>	<i>Percent</i>	<i>Percent</i>	<i>Percent</i>
Grain & Oilseed Farms, US	66	44	16	27	5	6
\$1,000-249,999	67	48	15	26	6	7
\$250,000 & Over	62	34	16	30	4	5
Cotton Farms, US	63	39	17	28	6	8
\$1,000-249,999	72	42	17	30	3	9
\$250,000 & Over	57	38	18	27	8	8
Beef Cattle Farms, US	74	52	12	28	4	4
\$1,000-249,999	75	53	11	27	4	4
\$250,000 & Over	61	41	22	30	3	4
Dairy Farms, US	76	53	11	24	4	6
\$1,000-249,999	78	57	10	23	4	4
\$250,000 & Over	73	47	12	26	3	7
Crop Farms, US	66	44	15	27	6	8
\$1,000-249,999	68	46	15	27	6	8
\$250,000 & Over	59	33	17	30	5	7
Livestock Farms, US	71	50	12	27	5	6
\$1,000-249,999	72	51	11	26	6	6
\$250,000 & Over	62	43	18	28	5	6
All Farms, US ³	69	47	13	27	6	7
\$1,000-249,999	70	48	13	27	6	7
\$250,000 & Over	60	36	18	30	5	6

¹ Primary method of internet access for those operators who have access to the internet.

² Economic class refers to sales and government payments received during the previous year.

³ Excludes AK and HI.

Primary Method of Internet Access ¹
By Economic Class ², Within Type of Farm, United States, 2005 and 2007

Type of Farm	Satellite		Wireless		Other/ Unknown	
	2005	2007	2005	2007	2005	2007
	<i>Percent</i>	<i>Percent</i>	<i>Percent</i>	<i>Percent</i>	<i>Percent</i>	<i>Percent</i>
Grain & Oilseed Farms, US	3	8	6	11	4	4
\$1,000-249,999	3	6	5	9	4	4
\$250,000 & Over	4	10	10	17	4	4
Cotton Farms, US	5	9	4	12	5	4
\$1,000-249,999	4	6	2	10	2	3
\$250,000 & Over	5	11	5	12	7	4
Beef Cattle Farms, US	3	7	2	4	5	5
\$1,000-249,999	3	7	2	4	5	5
\$250,000 & Over	5	10	4	9	5	6
Dairy Farms, US	2	4	1	7	6	6
\$1,000-249,999	1	4	2	6	5	6
\$250,000 & Over	3	5	1	9	8	6
Crop Farms, US	4	7	4	9	5	5
\$1,000-249,999	3	6	3	8	5	5
\$250,000 & Over	5	10	9	15	5	5
Livestock Farms, US	4	7	3	5	5	5
\$1,000-249,999	4	7	2	5	5	5
\$250,000 & Over	4	9	4	9	7	5
All Farms, US ³	4	7	3	7	5	5
\$1,000-249,999	3	7	3	6	5	5
\$250,000 & Over	4	10	7	13	6	5

¹ Primary method of internet access for those operators who have access to the internet.

² Economic class refers to sales and government payments received during the previous year.

³ Excludes AK and HI.

Farm Numbers: To help equate the percentages published in this report to actual farm counts, a table showing "Number of Farms: by State and United States" from the February 2007 NASS publication "Farms, Land in Farms, and Livestock Operations" is included below. A farm is "any place from which \$1,000 or more of agricultural products were produced and sold, or normally would have been sold, during the year."

**Number of Farms: by State and United States,
2003, 2005, and 2006¹**

State	2003 <i>Number</i>	2005 <i>Number</i>	2006 <i>Number</i>
AL	45,000	43,500	43,000
AZ	10,300	10,100	10,000
AR	47,500	47,000	46,500
CA	78,500	76,500	76,000
CO	31,400	30,500	30,700
DE	2,300	2,300	2,300
FL	44,000	42,000	41,000
GA	49,300	49,000	49,000
ID	25,000	25,000	25,000
IL	73,000	72,500	72,400
IN	59,500	59,000	59,000
IA	90,000	89,000	88,600
KS	64,500	64,500	64,000
KY	87,000	84,000	84,000
LA	27,200	26,800	26,800
MD	12,100	12,100	12,000
MI	53,300	53,000	53,000
MN	80,000	79,600	79,300
MS	42,800	42,200	42,000
MO	106,000	105,000	105,000
MT	28,000	28,000	28,100
NE	48,500	48,000	47,600
NV	3,000	3,000	3,000
NH ²	28,250	27,950	27,950
NJ	9,900	9,800	9,800
NM	17,500	17,500	17,500
NY	37,000	35,600	35,000
NC	53,500	49,000	48,000
ND	30,300	30,300	30,300
OH	77,600	76,500	76,200
OK	83,500	83,000	83,000
OR	40,000	40,000	39,300
PA	58,200	58,200	58,200
SC	24,400	24,500	24,600
SD	31,600	31,400	31,300
TN	87,000	83,000	82,000
TX	229,000	230,000	230,000
UT	15,300	15,200	15,100
VA	47,500	47,000	46,800
WA	35,500	34,500	34,000
WV	20,800	20,800	21,200
WI	76,500	76,500	76,000
WY	9,200	9,200	9,100
US ³	2,120,750	2,092,550	2,083,650

¹ 2007 number of farms not available until February 2008.

² Includes CT, ME, MA, NH, RI, and VT.

³ Excludes AK and HI.

Survey Procedures: The June Agricultural Survey is conducted every year to provide estimates of farm numbers and land in farms, crop acres planted, grains and oilseeds in storage, livestock inventories, and land values. In 1997, 1999, 2001, 2003, 2005, and again in 2007, questions were added to the survey form that asked the operator about access and use of computers. Some states were combined due to their low number of responses. When this occurs, it is footnoted in the tables.

The 2007 computer usage estimates are based on responses from over 31,400 agricultural operations and represent all sizes and types of farms. Coefficients of variations (cv's) at the national level in 2007 were 6 percent or less; at the regional level, cv's ranged from 1 to 20 percent; and at the State level, cv's generally ranged from 3 to 45 percent.

Report Features

Released August 10, 2007, by the National Agricultural Statistics Service (NASS), Agricultural Statistics Board, U.S. Department of Agriculture. For information on "Farm Computer Usage and Ownership" call Mark Aitken at (202) 720-9525, office hours 7:30 a.m. to 4:00 p.m. ET.

Listed below are persons within the National Agricultural Statistics Service to contact for additional information.

Kevin Barnes, Chief, Environmental, Economics, and Demographics Branch	(202) 720-6146
Mark R. Miller, Head, Environmental and Demographics Section	(202) 720-0684
Mark Aitken, Commodity Statistician	(202) 720-9525
Liana Cuffman, Commodity Statistician	(202) 690-0392

ACCESS TO REPORTS!!

For your convenience, there are several ways to obtain NASS reports, data products, and services:

INTERNET ACCESS

All NASS reports are available free of charge on the worldwide Internet. For access, connect to the Internet and go to the NASS Home Page at: www.nass.usda.gov.

E-MAIL SUBSCRIPTION

All NASS reports are available by subscription free of charge direct to your e-mail address. Starting with the NASS Home Page at www.nass.usda.gov, under the right navigation, *Receive reports by Email*, click on **National** or **State**. Follow the instructions on the screen.

PRINTED REPORTS OR DATA PRODUCTS

CALL OUR TOLL-FREE ORDER DESK: 800-999-6779 (U.S. and Canada)
Other areas, please call 703-605-6220 FAX: 703-605-6900
(Visa, MasterCard, check, or money order acceptable for payment.)

ASSISTANCE

For **assistance** with general agricultural statistics or further information about NASS or its products or services, contact the **Agricultural Statistics Hotline** at **800-727-9540**, 7:30 a.m. to 4:00 p.m. ET, or e-mail: nass@nass.usda.gov.

The U.S. Department of Agriculture (USDA) prohibits discrimination in all its programs and activities on the basis of race, color, national origin, age, disability, and where applicable, sex, marital status, familial status, parental status, religion, sexual orientation, genetic information, political beliefs, reprisal, or because all or a part of an individual's income is derived from any public assistance program. (Not all prohibited bases apply to all programs.) Persons with disabilities who require alternative means for communication of program information (Braille, large print, audiotape, etc.) should contact USDA's TARGET Center at (202) 720-2600 (voice and TDD).

To file a complaint of discrimination, write to USDA, Director, Office of Civil Rights, 1400 Independence Avenue, S.W., Washington, D.C. 20250-9410, or call (800) 795-3272 (voice) or (202) 720-6382 (TDD). USDA is an equal opportunity provider and employer.