



Released December 18, 2023, by the National Agricultural Statistics Service (NASS), Agricultural Statistics Board, United States Department of Agriculture (USDA).

November Milk Production down 0.5 Percent

Milk production in the 24 major States during November totaled 17.3 billion pounds, down 0.5 percent from November 2022. October revised production, at 17.9 billion pounds, was down 0.6 percent from October 2022. The October revision represented a decrease of 37 million pounds or 0.2 percent from last month's preliminary production estimate.

Production per cow in the 24 major States averaged 1,948 pounds for November, 3 pounds below November 2022.

The number of milk cows on farms in the 24 major States was 8.90 million head, 26,000 head less than November 2022, and 9,000 head less than October 2023.

November Milk Production in the United States down 0.6 Percent

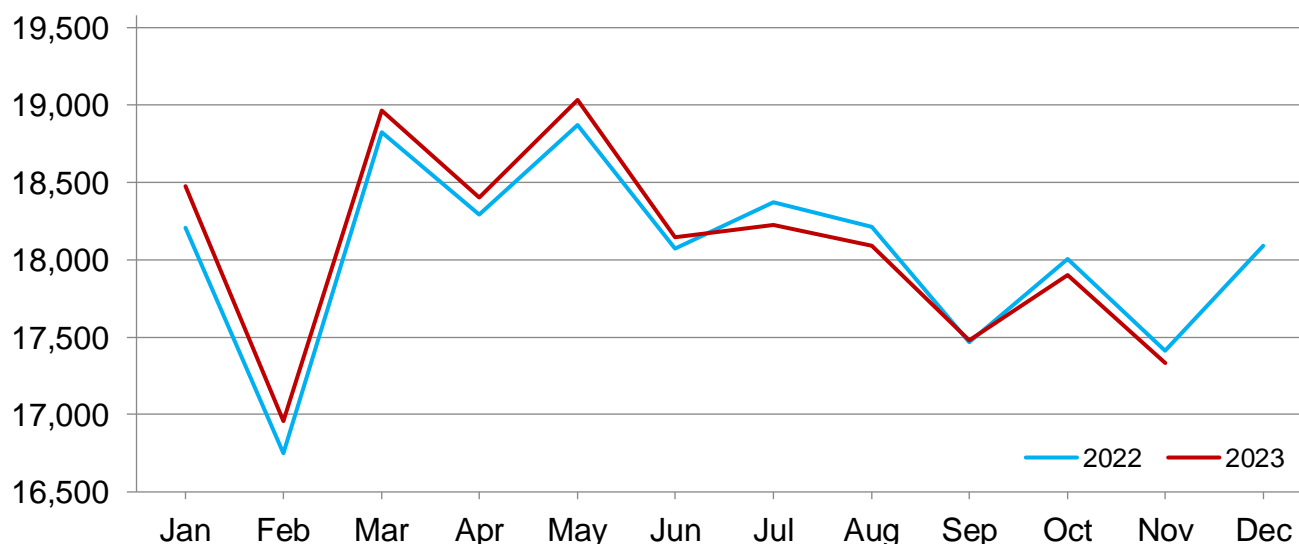
Milk production in the United States during November totaled 18.1 billion pounds, down 0.6 percent from November 2022.

Production per cow in the United States averaged 1,932 pounds for November, 2 pounds below November 2022.

The number of milk cows on farms in the United States was 9.36 million head, 44,000 head less than November 2022, and 10,000 head less than October 2023.

Monthly Milk Production - 24 Selected States

Million pounds



Milk Cows and Production by Quarter – United States: 2022-2023

[May not add due to rounding. Blank data cells indicate estimation period has not yet begun]

Quarter	Milk cows ¹		Milk per cow ²		Milk production ²		
	2022	2023	2022	2023	2022	2023	Change from 2022
	(1,000 head)	(1,000 head)	(pounds)	(pounds)	(million pounds)	(million pounds)	(percent)
January-March	9,384	9,427	6,000	6,031	56,305	56,855	1.0
April-June	9,411	9,416	6,144	6,165	57,822	58,054	0.4
July-September	9,408	9,377	5,999	5,981	56,438	56,083	-0.6
October-December	9,404		5,944		55,897		
Annual	9,402		24,087		226,462		

¹ Includes dry cows. Excludes heifers not yet fresh.

² Excludes milk sucked by calves.

Milk Cows and Production by Month – 24 Selected States: 2022-2023

[May not add due to rounding. Blank data cells indicate estimation period has not yet begun]

Month	Milk cows ¹		Milk per cow ²		Milk production ²		
	2022	2023	2022	2023	2022	2023	Change from 2022
	(1,000 head)	(1,000 head)	(pounds)	(pounds)	(million pounds)	(million pounds)	(percent)
January	8,876	8,927	2,051	2,069	18,205	18,474	1.5
February	8,885	8,946	1,885	1,896	16,750	16,958	1.2
March	8,908	8,959	2,113	2,117	18,827	18,962	0.7
April	8,908	8,945	2,053	2,057	18,291	18,401	0.6
May	8,921	8,949	2,115	2,127	18,871	19,033	0.9
June	8,915	8,927	2,027	2,033	18,074	18,148	0.4
July	8,920	8,911	2,060	2,046	18,373	18,228	-0.8
August	8,927	8,913	2,040	2,030	18,212	18,093	-0.7
September	8,927	8,917	1,957	1,961	17,470	17,482	0.1
October	8,931	8,907	2,016	2,010	18,005	17,899	-0.6
November	8,924	8,898	1,951	1,948	17,413	17,330	-0.5
December	8,918		2,029		18,093		
Annual	8,913		24,300		216,584		

¹ Includes dry cows. Excludes heifers not yet fresh.

² Excludes milk sucked by calves.

Estimated Milk Cows and Production by Month – United States: 2022-2023

[May not add due to rounding. Blank data cells indicate estimation period has not yet begun]

Month	Milk cows ¹		Milk per cow ²		Milk production ²		
	2022	2023	2022	2023	2022	2023	Change from 2022
	(1,000 head)	(1,000 head)	(pounds)	(pounds)	(million pounds)	(million pounds)	(percent)
January	9,367	9,408	2,034	2,052	19,050	19,308	1.4
February	9,380	9,429	1,870	1,880	17,540	17,724	1.0
March	9,404	9,444	2,096	2,099	19,715	19,823	0.5
April	9,404	9,425	2,036	2,039	19,147	19,217	0.4
May	9,417	9,425	2,098	2,110	19,755	19,884	0.7
June	9,413	9,399	2,010	2,016	18,920	18,953	0.2
July	9,413	9,379	2,038	2,026	19,180	19,000	-0.9
August	9,406	9,376	2,022	2,011	19,016	18,856	-0.8
September	9,406	9,376	1,939	1,944	18,242	18,227	-0.1
October	9,412	9,370	1,998	1,993	18,809	18,675	-0.7
November	9,404	9,360	1,934	1,932	18,184	18,080	-0.6
December	9,396		2,012		18,904		
Annual	9,402		24,087		226,462		

¹ Includes dry cows. Excludes heifers not yet fresh.

² Excludes milk sucked by calves.

Milk Cows and Production – 24 Selected States: November 2022 and 2023

[May not add due to rounding]

State	Milk cows ¹		Milk per cow ²		Milk production ²		
	2022	2023	2022	2023	2022	2023	Change from 2022
	(1,000 head)	(1,000 head)	(pounds)	(pounds)	(million pounds)	(million pounds)	(percent)
Arizona	195	201	1,965	1,975	383	397	3.7
California	1,724	1,713	1,930	1,910	3,327	3,272	-1.7
Colorado	203	198	2,105	2,110	427	418	-2.1
Florida	92	98	1,575	1,575	145	154	6.2
Georgia	92	93	1,760	1,760	162	164	1.2
Idaho	661	663	2,000	2,000	1,322	1,326	0.3
Illinois	79	79	1,710	1,720	135	136	0.7
Indiana	186	190	1,920	1,915	357	364	2.0
Iowa	239	239	2,000	2,010	478	480	0.4
Kansas	175	173	1,950	1,945	341	336	-1.5
Michigan	431	439	2,220	2,220	957	975	1.9
Minnesota	454	451	1,870	1,870	849	843	-0.7
New Mexico	282	255	1,960	1,950	553	497	-10.1
New York	628	630	2,035	2,040	1,278	1,285	0.5
Ohio	250	255	1,790	1,800	448	459	2.5
Oregon	123	119	1,670	1,680	205	200	-2.4
Pennsylvania	467	466	1,700	1,680	794	783	-1.4
South Dakota	185	198	1,860	1,860	344	368	7.0
Texas	653	635	2,065	2,075	1,348	1,318	-2.2
Utah	92	92	1,850	1,850	170	170	-
Vermont	118	116	1,755	1,725	207	200	-3.4
Virginia	69	69	1,635	1,660	113	115	1.8
Washington	255	256	1,920	1,900	490	486	-0.8
Wisconsin	1,271	1,270	2,030	2,035	2,580	2,584	0.2
24-State Total	8,924	8,898	1,951	1,948	17,413	17,330	-0.5

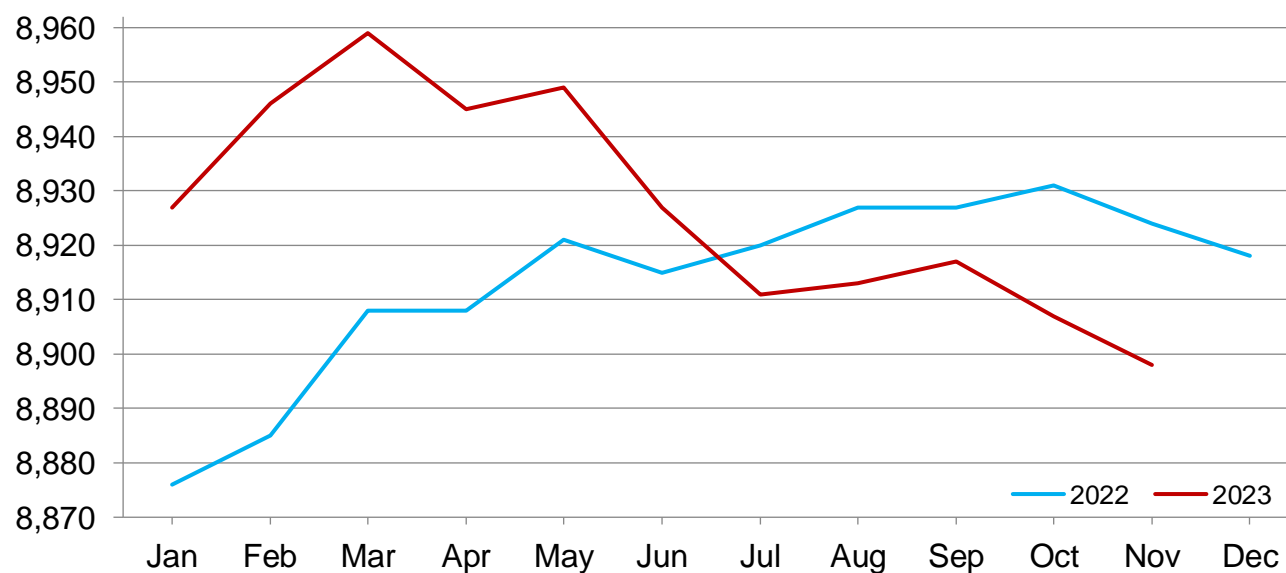
- Represents zero.

¹ Includes dry cows. Excludes heifers not yet fresh.

² Excludes milk sucked by calves.

Monthly Milk Cows - 24 Selected States

Thousand head



Milk Cows and Production – 24 Selected States: October 2022 and 2023

[May not add due to rounding]

State	Milk cows ¹		Milk per cow ²		Milk production ²		Change from 2022
	2022	2023	2022	2023	2022	2023	
	(1,000 head)	(1,000 head)	(pounds)	(pounds)	(million pounds)	(million pounds)	(percent)
Arizona	195	201	1,935	1,960	377	394	4.5
California	1,724	1,713	1,975	1,935	3,405	3,315	-2.6
Colorado	205	198	2,170	2,175	445	431	-3.1
Florida	94	100	1,550	1,570	146	157	7.5
Georgia	92	93	1,810	1,775	167	165	-1.2
Idaho	662	663	2,120	2,080	1,403	1,379	-1.7
Illinois	79	79	1,735	1,745	137	138	0.7
Indiana	186	191	1,980	1,965	368	375	1.9
Iowa	239	239	2,065	2,060	494	492	-0.4
Kansas	175	173	2,015	2,010	353	348	-1.4
Michigan	428	439	2,300	2,290	984	1,005	2.1
Minnesota	453	451	1,940	1,935	879	873	-0.7
New Mexico	284	260	2,030	2,000	577	520	-9.9
New York	627	630	2,105	2,130	1,320	1,342	1.7
Ohio	250	255	1,830	1,845	458	470	2.6
Oregon	124	119	1,755	1,745	218	208	-4.6
Pennsylvania	468	466	1,730	1,730	810	806	-0.5
South Dakota	185	198	1,955	1,955	362	387	6.9
Texas	655	635	2,150	2,175	1,408	1,381	-1.9
Utah	92	92	1,930	1,935	178	178	-
Vermont	117	116	1,810	1,805	212	209	-1.4
Virginia	69	69	1,670	1,700	115	117	1.7
Washington	257	257	2,025	2,010	520	517	-0.6
Wisconsin	1,271	1,270	2,100	2,120	2,669	2,692	0.9
24-State Total	8,931	8,907	2,016	2,010	18,005	17,899	-0.6

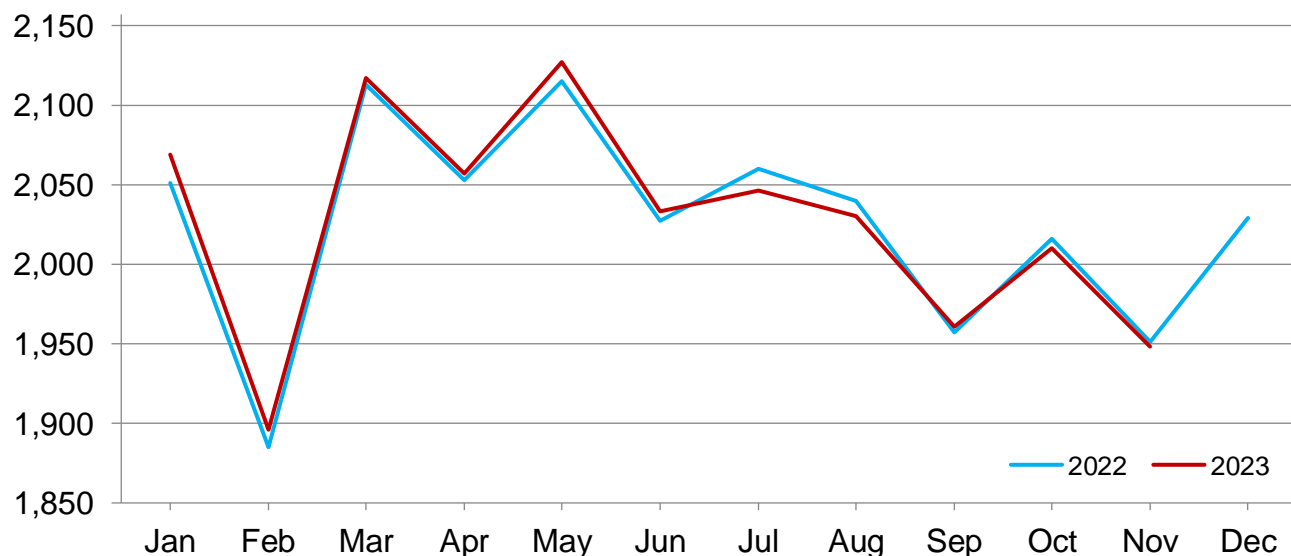
- Represents zero.

¹ Includes dry cows. Excludes heifers not yet fresh.

² Excludes milk sucked by calves.

Monthly Milk Per Cow - 24 Selected States

Pounds



Statistical Methodology

Survey Procedures: Primary data used to determine these estimates were obtained from a sample of producers. Individual States maintain a list of all known milk producers and information on the size of their herd. States use all known sources of producers to ensure that their lists are as complete as possible. Generally, all large producers and a sample of small producers are included in the survey. Questionnaires are mailed to producers near the end of the month to obtain data for the first day of the month. Additional reports are obtained by telephone, as needed, to supplement the mail response. Where feasible, States utilize state and federal administrative data to estimate milk production. This eliminates duplication of data gathering by different government agencies such as Agricultural Marketing Service (AMS) Dairy Market News. Indications of milk cow inventory are also obtained in the January Cattle Survey.

Estimation Procedures: Regional Field Offices prepare these estimates by using a combination of survey indications, historic trends, and any available administrative data. Individual State estimates are reviewed by the Agricultural Statistics Board for reasonableness.

Revision Policy: Milk production, milk per cow, and number of milk cows are subject to revision the following month after initial publication for monthly States or the following quarter for the quarterly States. Normally, administrative data from Federal Market Orders, State Departments of Agriculture, or other sources are the main basis for revisions. However, administrative data for all States may not be available in time for these revisions. Estimates are again subject to revisions in February each year based on additional administrative data. In the event that additional changes are necessary, a third revision is possible in February the following year. Estimates are again reviewed after data from the five-year Census of Agriculture are available. No revisions are made after that date.

Reliability: Since all operations with dairy animals are not included in the sample, survey estimates are subject to sampling variability. Survey results are also subject to non-sampling errors such as omissions, duplications, and mistakes in reporting, recording, and processing the data. The effects of these errors cannot be measured directly. They are minimized through rigid quality controls in the data collection process and through a careful review of all reported data for consistency and reasonableness.

To assist users in evaluating the reliability of the estimates in this report, the "Root Mean Square Error" is shown for selected items in the table below. The "Root Mean Square Error" is a statistical measure based on past performance and is computed using the differences between first and final estimates. The "Root Mean Square Error" for the 24 State milk production estimates over the past 24 months is 0.2 percent. This means that chances are 2 out of 3 that the final estimate will not be above or below the current estimate of 17.3 billion pounds by more than 0.2 percent. Chances are 9 out of 10 that the difference will not exceed 0.4 percent.

Reliability of Monthly Milk Production Estimates

[Based on data for the past 24 months]

Item	Root mean square error	90 percent confidence level	Difference between first and latest estimate				
			Average	Smallest	Largest	Months	
						Below latest	Above latest
	(percent)	(percent)	(1,000)	(1,000)	(1,000)	(number)	(number)
Milk production	0.2	0.4	32	3	93	12	12
All Milk cows	0.1	0.1	4	0	12	11	9

Information Contacts

Listed below are the commodity specialists in the Livestock Branch of the National Agricultural Statistics Service to contact for additional information. E-mail inquiries may be sent to nass@usda.gov.

Travis Averill, Chief, Livestock Branch	(202) 692-0069
Scott Hollis, Head, Livestock Section	(202) 690-2424
Sherry Bertramsen – Livestock Slaughter	(202) 690-8632
Ryan Cowen – Cattle, Cattle on Feed	(202) 720-3040
Kim DaPra – Milk Production and Milk Cows	(512) 501-3266
Donnie Fike – Dairy Products	(202) 690-3347
Anthony Fischer – Hogs and Pigs	(202) 720-3106
Suzanne Richards – Sheep and Goats	(202) 720-4448

Access to NASS Reports

For your convenience, you may access NASS reports and products the following ways:

- All reports are available electronically, at no cost, on the NASS web site: www.nass.usda.gov.
- Both national and state specific reports are available via a free e-mail subscription. To set-up this free subscription, visit www.nass.usda.gov and click on “National” or “State” in upper right corner above “search” box to create an account and select the reports you would like to receive.
- Cornell’s Mann Library has launched a new website housing NASS’s and other agency’s archived reports. The new website, <https://usda.library.cornell.edu>. All email subscriptions containing reports will be sent from the new website, <https://usda.library.cornell.edu>. To continue receiving the reports via e-mail, you will have to go to the new website, create a new account and re-subscribe to the reports. If you need instructions to set up an account or subscribe, they are located at: <https://usda.library.cornell.edu/help>. You should whitelist notifications@usda-esmis.library.cornell.edu in your email client to avoid the emails going into spam/junk folders.

For more information on NASS surveys and reports, call the NASS Agricultural Statistics Hotline at (800) 727-9540, 7:30 a.m. to 4:00 p.m. ET, or e-mail: nass@usda.gov.

The U.S. Department of Agriculture (USDA) prohibits discrimination against its customers, employees, and applicants for employment on the basis of race, color, national origin, age, disability, sex, gender identity, religion, reprisal, and where applicable, political beliefs, marital status, familial or parental status, sexual orientation, or all or part of an individual's income is derived from any public assistance program, or protected genetic information in employment or in any program or activity conducted or funded by the Department. (Not all prohibited bases will apply to all programs and/or employment activities.)

If you wish to file a Civil Rights program complaint of discrimination, complete the [USDA Program Discrimination Complaint Form](#) (PDF), found online at www.ascr.usda.gov/filing-program-discrimination-complaint-usda-customer, or at any USDA office, or call (866) 632-9992 to request the form. You may also write a letter containing all of the information requested in the form. Send your completed complaint form or letter to us by mail at U.S. Department of Agriculture, Director, Office of Adjudication, 1400 Independence Avenue, S.W., Washington, D.C. 20250-9410, by fax (202) 690-7442 or email at program.intake@usda.gov.



USDA'S 100TH ANNUAL

AGRICULTURAL OUTLOOK FORUM

CULTIVATING THE FUTURE

Hybrid
Event

February 15-16, 2024 • Crystal City Gateway Marriott, Arlington, VA

[Register to Attend In-Person or Virtually](#)

The Agricultural Outlook Forum

- USDA's largest annual gathering and the agricultural sector's premiere event
- Brings together more than 1,500 sector leaders and professionals to connect and discuss current and key emerging issues in agriculture
- More than 30 sessions covering commodity markets and outlook, international trade, agricultural policy, as well as cutting edge topics that will influence the future of agriculture



For More Information, please contact the Forum Coordinator [Mirvat Sewadeh](#) at 202-720-5447