



Milk Production

Released February 16, 2001, by the National Agricultural Statistics Service (NASS), Agricultural Statistics Board, U.S. Department of Agriculture. For information on "Milk Production" call Ty Kalas at 202-690-3236, office hours 7:00 a.m. to 4:30 p.m. ET.

January Milk Production Down 1.5 Percent

Milk production in the 20 major States during January totaled 12.1 billion pounds, down 1.5 percent from production in these same States in January 2000. December revised production, at 11.9 billion pounds was down 0.7 percent from December 1999. The December revision represented an decrease of 0.6 percent or 77 million pounds from last months preliminary production estimate.

Production per cow in the 20 major States averaged 1,550 pounds for January, 29 pounds below January 2000.

The number of cows on farms in the 20 major States was 7.79 million head, 27,000 head more than January 2000, but 12,000 head less than December 2000.

2000 Annual Milk Production Up 3.0 Percent from 1999

The annual production of milk for the U.S. during 2000 was 167.7 billion pounds, 3.0 percent above 1999. This was the fourth consecutive year of increased milk production and a new record high. Revisions to 1999 production increased the annual total by less than 0.1 percent. Revised 2000 production was down by 0.2 percent from last months publication.

Production per cow in the U.S. averaged 18,204 pounds for 2000, 432 pounds above 1999. Average annual rate of milk production per cow has increased 21 percent since 1991.

The average number of milk cows on farms in the U.S. during 2000 was 9.21 million head, up 0.6 percent from 1999. Average number of milk cows remained the same for 1999, but revised down 17,000 head for 2000 from the previous estimate.

Special Note

Included in this issue are tables with Number of Operations, Percent of Inventory, and Percent of Milk Production by Size Group. Also included is a U.S. table which contains additional breakouts for the largest size groups.

This issue also contains monthly, quarterly, and annual revisions for 1999-2000.

Milk Cows and Production: By Quarter, United States, 2000-2001 ¹

Quarter	Milk Cows ²		Milk Per Cow ³		Milk Production ³		
	2000	2001	2000	2001	2000	2001	Change From 2000
	<i>1,000 Head</i>	<i>1,000 Head</i>	<i>Pounds</i>	<i>Pounds</i>	<i>Million Pounds</i>	<i>Million Pounds</i>	<i>Percent</i>
Jan-Mar	9,188		4,640		42,630		
Apr-Jun	9,213		4,688		43,189		
Jul-Sep	9,229		4,460		41,161		
Oct-Dec	9,211		4,416		40,678		
Annual	9,210		18,204		167,658		

¹ May not add due to rounding.

² Includes dry cows, excludes heifers not yet fresh.

³ Excludes milk sucked by calves.

Milk Cows and Production: By Month, 20 Selected States, 2000-2001

Month	Milk Cows ¹		Milk Per Cow ²		Milk Production ²		
	2000	2001	2000	2001	2000	2001	Change From 2000
	<i>1,000 Head</i>	<i>1,000 Head</i>	<i>Pounds</i>	<i>Pounds</i>	<i>Million Pounds</i>	<i>Million Pounds</i>	<i>Percent</i>
Jan	7,764	7,791	1,579	1,550	12,259	12,073	-1.5
Feb	7,766		1,506		11,694		
Mar	7,776		1,632		12,687		
Apr	7,789		1,593		12,411		
May	7,799		1,636		12,758		
Jun	7,808		1,547		12,082		
Jul	7,821		1,561		12,205		
Aug	7,820		1,525		11,928		
Sep	7,820		1,464		11,451		
Oct	7,817		1,511		11,813		
Nov	7,805		1,459		11,385		
Dec	7,803		1,519		11,855		
Annual	7,799		18,532		144,528		

¹ Includes dry cows, excludes heifers not yet fresh.

² Excludes milk sucked by calves.

Estimated Milk Cows and Production: By Month, United States, 2000-2001

Month	Milk Cows ¹		Milk Per Cow ²		Milk Production ²		
	2000	2001	2000	2001	2000	2001	Change From 2000
	<i>1,000 Head</i>	<i>1,000 Head</i>	<i>Pounds</i>	<i>Pounds</i>	<i>Million Pounds</i>	<i>Million Pounds</i>	<i>Percent</i>
Jan	9,183	9,214	1,553	1,525	14,263	14,047	-1.5
Feb	9,183		1,482		13,606		
Mar	9,197		1,605		14,761		
Apr	9,202		1,564		14,390		
May	9,214		1,605		14,791		
Jun	9,224		1,519		14,008		
Jul	9,229		1,530		14,117		
Aug	9,228		1,495		13,798		
Sep	9,229		1,435		13,246		
Oct	9,222		1,486		13,708		
Nov	9,208		1,435		13,212		
Dec	9,204		1,495		13,758		
Annual	9,210		18,204		167,658		

¹ Includes dry cows, excludes heifers not yet fresh.

² Excludes milk sucked by calves.

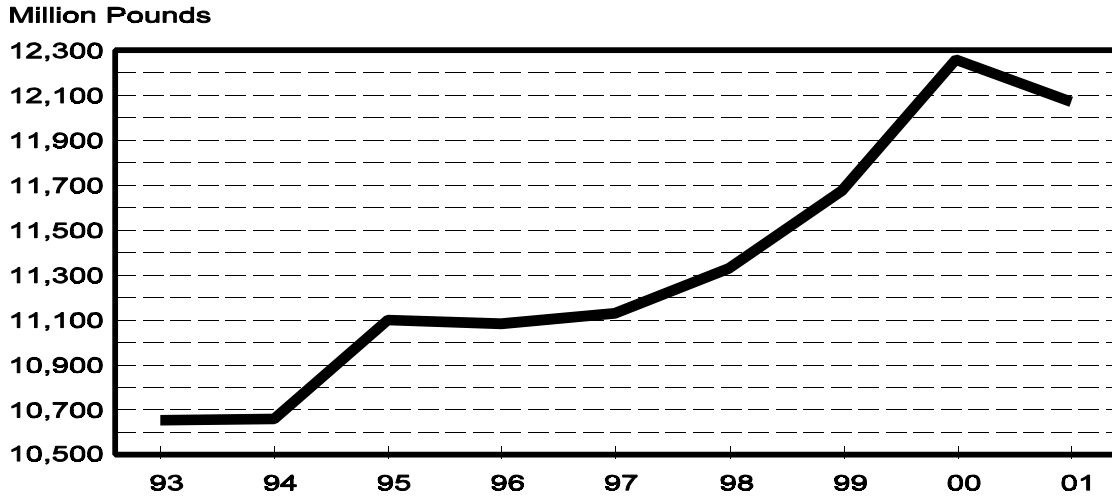
Milk Cows and Production: By State, January 2000-2001

State	Milk Cows ¹		Milk Per Cow ²		Milk Production ²		
	2000	2001	2000	2001	2000	2001	Change From 2000
	<i>1,000 Head</i>	<i>1,000 Head</i>	<i>Pounds</i>	<i>Pounds</i>	<i>Million Pounds</i>	<i>Million Pounds</i>	<i>Percent</i>
AZ	137	140	1,925	1,795	264	251	-4.9
CA	1,492	1,562	1,815	1,760	2,708	2,749	1.5
FL	156	155	1,450	1,415	226	219	-3.1
ID	332	354	1,730	1,740	574	616	7.3
IL	120	118	1,500	1,470	180	173	-3.9
IN	139	151	1,400	1,395	195	211	8.2
IA	215	215	1,555	1,525	334	328	-1.8
KY	130	130	1,155	1,115	150	145	-3.3
MI	298	301	1,590	1,585	474	477	0.6
MN	540	520	1,545	1,530	834	796	-4.6
MO	158	149	1,240	1,150	196	171	-12.8
NM	237	261	1,780	1,680	422	438	3.8
NY	700	670	1,450	1,430	1,015	958	-5.6
OH	259	264	1,470	1,400	381	370	-2.9
PA	617	607	1,520	1,520	938	923	-1.6
TX	350	343	1,515	1,360	530	466	-12.1
VT	160	158	1,485	1,510	238	239	0.4
VA	120	118	1,425	1,365	171	161	-5.8
WA	246	247	1,900	1,875	467	463	-0.9
WI	1,358	1,328	1,445	1,445	1,962	1,919	-2.2
20-State Total	7,764	7,791	1,579	1,550	12,259	12,073	-1.5

¹ Includes dry cows, excludes heifers not yet fresh.

² Excludes milk sucked by calves.

**January Milk Production, 1993-2001
20 States**



Milk Cows and Production: By State, December 1999-2000 ¹

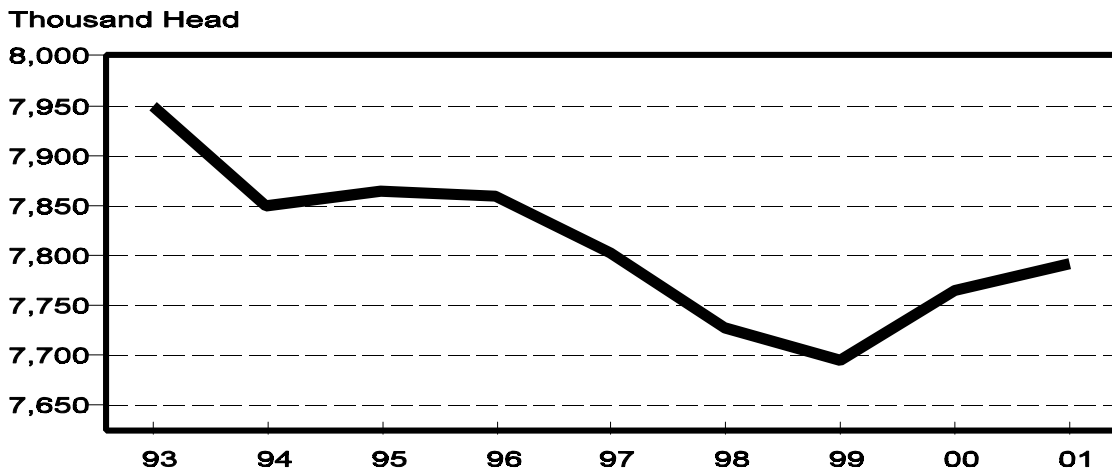
State	Milk Cows ²		Milk per Cow ³		Milk Production ³		
	1999	2000	1999	2000	1999	2000	Change From 1999
	<i>1,000 Head</i>	<i>1,000 Head</i>	<i>Pounds</i>	<i>Pounds</i>	<i>Million Pounds</i>	<i>Million Pounds</i>	<i>Percent</i>
AZ	135	140	1,830	1,735	247	243	-1.6
CA	1,488	1,556	1,775	1,735	2,641	2,700	2.2
FL	156	156	1,320	1,325	206	207	0.5
ID	331	354	1,730	1,730	573	612	6.8
IL	121	118	1,430	1,460	173	172	-0.6
IN	138	150	1,355	1,380	187	207	10.7
IA	215	215	1,495	1,495	321	321	
KY	131	131	1,110	1,045	145	137	-5.5
MI	297	300	1,550	1,575	460	473	2.8
MN	540	525	1,495	1,485	807	780	-3.3
MO	158	151	1,200	1,180	190	178	-6.3
NM	236	261	1,720	1,670	406	436	7.4
NY	700	670	1,445	1,410	1,012	945	-6.6
OH	258	265	1,480	1,400	382	371	-2.9
PA	619	613	1,480	1,470	916	901	-1.6
TX	348	345	1,395	1,305	485	450	-7.2
VT	159	158	1,430	1,435	227	227	
VA	120	119	1,350	1,330	162	158	-2.5
WA	246	246	1,885	1,820	464	448	-3.4
WI	1,360	1,330	1,420	1,420	1,931	1,889	-2.2
20-State Total	7,756	7,803	1,539	1,519	11,935	11,855	-0.7

¹ 2000 revised.

² Includes dry cows, excludes heifers not yet fresh.

³ Excludes milk sucked by calves.

**January Milk Cows, 1993-2001
20 States**



Milk Cows and Production: United States, 1991-2000 ¹

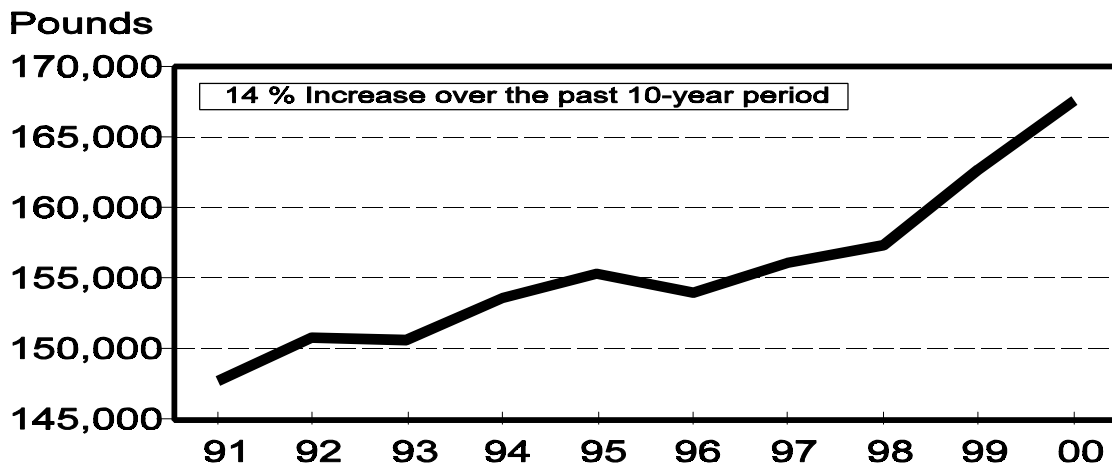
Year	Milk Cows ² <i>1,000 Head</i>	Production per Cow ³		Milk Production ³
		Milk <i>Pounds</i>	Total <i>Million Pounds</i>	
1991	9,826	15,031	147,697	
1992	9,688	15,570	150,847	
1993	9,581	15,722	150,636	
1994	9,494	16,179	153,602	
1995	9,466	16,405	155,292	
1996	9,372	16,433	154,006	
1997	9,252	16,871	156,091	
1998	9,154	17,189	157,348	
1999	9,156	17,772	162,716	
2000	9,210	18,204	167,658	

¹ May not add due to rounding.

² Average number during year, excluding heifers not yet fresh.

³ Excludes milk sucked by calves.

Milk Production, 1991-2000 United States



Milk Cows and Production: By State and United States, 1999-2000

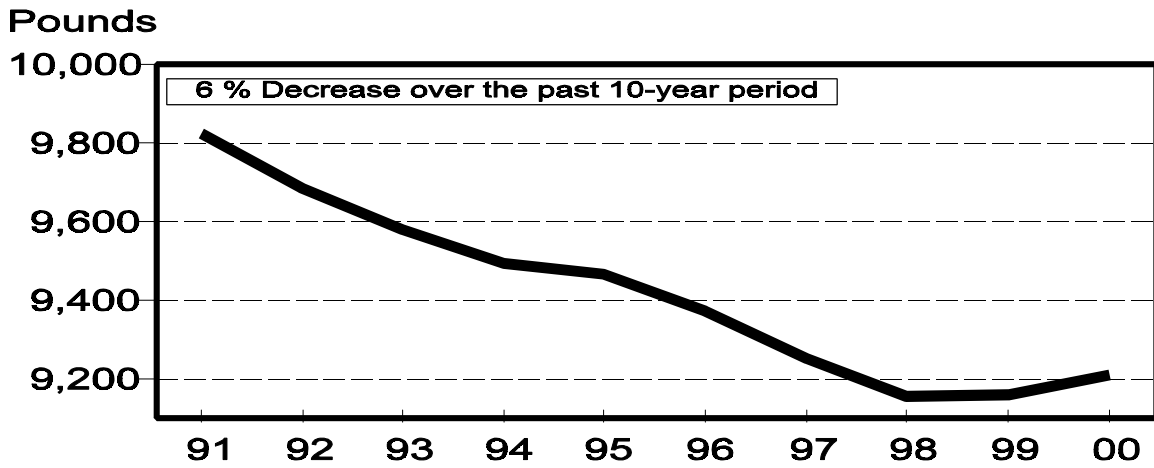
State	Milk Cows ¹		Milk Per Cow ²		Milk Production ²		Change From 1999
	1999	2000	1999	2000	1999	2000	
	<i>1,000 Head</i>	<i>1,000 Head</i>	<i>Pounds</i>	<i>Pounds</i>	<i>Million Pounds</i>	<i>Million Pounds</i>	<i>Percent</i>
AL	27	25	13,926	13,920	376	348	-7.4
AK	1.0	0.9	13,580	14,500	13.58	13.05	-3.9
AZ	134	139	21,873	21,705	2,931	3,017	2.9
AR	42	42	12,381	12,476	520	524	0.8
CA	1,466	1,523	20,777	21,169	30,459	32,240	5.8
CO	83	89	20,819	21,618	1,728	1,924	11.3
CT	29	26	17,931	18,385	520	478	-8.1
DE	11.0	10.0	15,545	14,910	171.0	149.1	-12.8
FL	158	157	15,177	15,675	2,398	2,461	2.6
GA	89	87	16,281	16,471	1,449	1,433	-1.1
HI	8.6	8.1	13,919	14,358	119.7	116.3	-2.8
ID	318	347	20,292	20,816	6,453	7,223	11.9
IL	123	120	16,496	17,450	2,029	2,094	3.2
IN	136	145	16,066	16,310	2,185	2,365	8.2
IA	217	215	17,521	18,298	3,802	3,934	3.5
KS	86	91	16,337	16,703	1,405	1,520	8.2
KY	133	132	12,414	12,803	1,651	1,690	2.4
LA	61	58	11,656	12,155	711	705	-0.8
ME	41	40	16,805	16,725	689	669	-2.9
MD	85	84	16,059	16,083	1,365	1,351	-1.0
MA	25	23	16,800	17,043	420	392	-6.7
MI	299	300	18,244	19,017	5,455	5,705	4.6
MN	545	534	17,391	17,777	9,478	9,493	0.2
MS	38	36	14,526	15,111	552	544	-1.4
MO	159	154	14,069	14,662	2,237	2,258	0.9
MT	18	18	16,833	17,500	303	315	4.0
NE	74	77	15,392	16,260	1,139	1,252	9.9
NV	25	25	18,240	19,040	456	476	4.4
NH	19	18	16,895	17,222	321	310	-3.4
NJ	17	16	16,471	16,625	280	266	-5.0
NM	232	250	20,362	20,944	4,724	5,236	10.8
NY	701	686	17,235	17,376	12,082	11,920	-1.3
NC	73	71	16,658	16,746	1,216	1,189	-2.2
ND	49	49	14,061	14,306	689	701	1.7
OH	260	262	17,077	17,027	4,440	4,461	0.5
OK	92	91	13,576	14,231	1,249	1,295	3.7
OR	89	90	18,708	18,833	1,665	1,695	1.8
PA	616	617	17,745	18,081	10,931	11,156	2.1
RI	2.0	1.8	15,500	15,667	31.0	28.2	-9.0
SC	24	23	15,375	16,043	369	369	
SD	102	102	14,775	16,020	1,507	1,634	8.4
TN	97	95	14,608	14,789	1,417	1,405	-0.8
TX	345	348	16,284	16,480	5,618	5,735	2.1
UT	92	96	17,587	17,573	1,618	1,687	4.3
VT	160	159	16,938	17,528	2,710	2,787	2.8
VA	121	120	15,479	15,842	1,873	1,901	1.5
WA	247	247	22,409	22,644	5,535	5,593	1.0
WV	18	17	15,278	15,588	275	265	-3.6
WI	1,365	1,344	16,902	17,306	23,071	23,259	0.8
WY	6.0	5.6	13,300	13,571	79.8	76.0	-4.8
US ³	9,156	9,210	17,772	18,204	162,716	167,658	3.0

¹ Average number during year, excluding heifers not yet fresh.

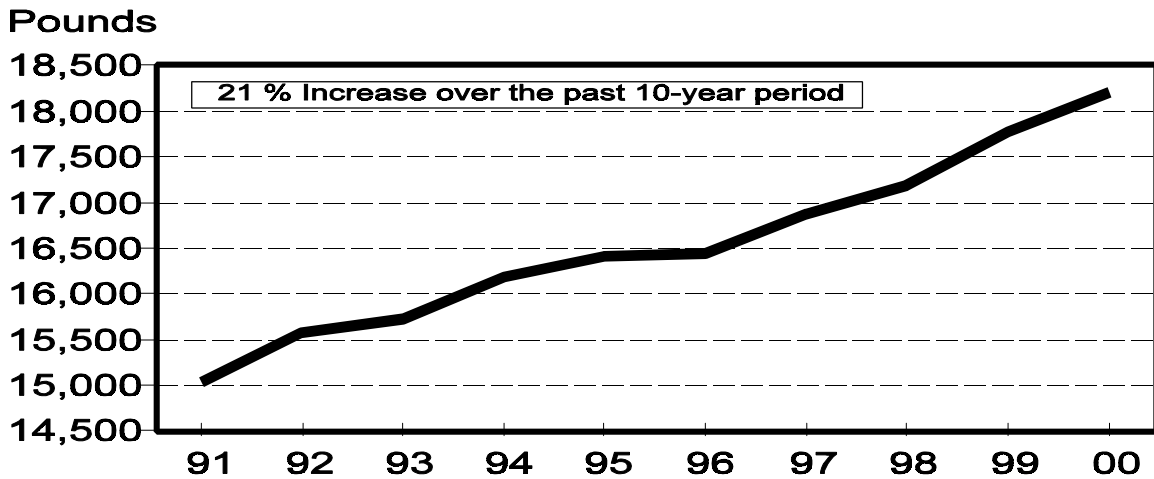
² Excludes milk sucked by calves.

³ May not add due to rounding.

Milk Cows, 1991-2000 United States



Rate per Cow, 1991-2000 United States



Milk Cows: Number by Month, State, and 20 State Total, 1999 ¹

State	Jan	Feb	Mar	Apr	May	Jun	
	<i>1,000 Head</i>	<i>1,000 Head</i>	<i>1,000 Head</i>	<i>1,000 Head</i>	<i>1,000 Head</i>	<i>1,000 Head</i>	
AZ	132	132	132	132	134	134	
CA	1,444	1,447	1,452	1,456	1,459	1,464	
FL	158	158	159	160	160	159	
ID	304	306	309	312	314	317	
IL	125	125	125	124	123	122	
IN	137	136	136	136	136	136	
IA	220	219	218	218	217	217	
KY	135	135	134	134	133	133	
MI	291	292	296	298	303	304	
MN	545	545	545	545	545	545	
MO	164	162	161	160	160	159	
NM	220	223	231	231	232	234	
NY	702	702	700	700	702	702	
OH	260	260	260	260	260	260	
PA	617	615	614	615	615	614	
TX	340	341	342	342	345	346	
VT	162	162	162	161	160	159	
VA	122	122	122	122	122	121	
WA	248	248	249	248	247	247	
WI	1,368	1,366	1,366	1,365	1,366	1,368	
20-Sts	7,694	7,696	7,713	7,719	7,733	7,741	
	Jul	Aug	Sep	Oct	Nov	Dec	Annual Avg. ²
AZ	135	135	135	135	135	135	134
CA	1,468	1,471	1,476	1,480	1,483	1,488	1,466
FL	159	158	157	156	156	156	158
ID	322	324	325	327	329	331	318
IL	122	121	121	121	121	121	123
IN	136	136	135	135	137	138	136
IA	216	216	216	215	215	215	217
KY	132	132	132	131	131	131	133
MI	306	302	299	299	298	297	299
MN	545	550	550	545	545	540	545
MO	157	157	157	158	158	158	159
NM	235	235	235	235	236	236	232
NY	702	702	702	700	700	700	701
OH	260	259	259	259	259	258	260
PA	614	615	616	617	618	619	616
TX	346	346	346	346	348	348	345
VT	159	160	160	159	160	159	160
VA	120	121	121	121	121	120	121
WA	249	247	247	245	245	246	247
WI	1,368	1,366	1,364	1,362	1,362	1,360	1,365
20-Sts	7,751	7,753	7,753	7,746	7,757	7,756	7,734

¹ Includes dry cows, excludes heifers not yet fresh.

² Average based on monthly totals.

Milk Cows: Number by Month, State, and 20 State Total, 2000 ¹

State	Jan	Feb	Mar	Apr	May	Jun	
	<i>1,000 Head</i>	<i>1,000 Head</i>	<i>1,000 Head</i>	<i>1,000 Head</i>	<i>1,000 Head</i>	<i>1,000 Head</i>	
AZ	137	137	137	138	138	138	
CA	1,492	1,496	1,501	1,506	1,513	1,518	
FL	156	157	157	158	158	158	
ID	332	332	334	339	344	351	
IL	120	120	120	120	120	120	
IN	139	141	143	145	144	144	
IA	215	215	215	215	215	215	
KY	130	130	132	133	133	132	
MI	298	296	296	299	301	304	
MN	540	540	540	540	540	535	
MO	158	157	156	157	156	155	
NM	237	238	240	241	246	249	
NY	700	700	698	695	690	688	
OH	259	259	261	262	262	262	
PA	617	617	618	615	615	617	
TX	350	350	350	350	350	350	
VT	160	160	160	160	160	160	
VA	120	120	120	120	120	120	
WA	246	246	246	247	247	247	
WI	1,358	1,355	1,352	1,349	1,347	1,345	
20-Sts	7,764	7,766	7,776	7,789	7,799	7,808	
	Jul	Aug	Sep	Oct	Nov	Dec	Annual Avg. ²
AZ	140	140	140	140	140	140	139
CA	1,525	1,533	1,540	1,545	1,550	1,556	1,523
FL	157	156	157	156	156	156	157
ID	355	355	356	356	354	354	347
IL	120	120	120	119	118	118	120
IN	145	147	148	148	148	150	145
IA	215	215	215	215	215	215	215
KY	133	132	132	131	131	131	132
MI	302	302	300	302	299	300	300
MN	535	530	530	530	525	525	534
MO	154	153	153	152	151	151	154
NM	252	255	258	261	261	261	250
NY	685	682	678	674	673	670	686
OH	263	263	264	264	264	265	262
PA	619	619	619	618	616	613	617
TX	349	348	346	345	345	345	348
VT	160	160	159	158	158	158	159
VA	120	120	119	119	119	119	120
WA	247	247	247	248	248	246	247
WI	1,345	1,343	1,339	1,336	1,334	1,330	1,344
20-Sts	7,821	7,820	7,820	7,817	7,805	7,803	7,799

¹ Includes dry cows, excludes heifers not yet fresh.

² Average based on monthly totals.

**Milk Produced per Cow: by Month,
State, and 20 States, 1999¹**

State	Jan	Feb	Mar	Apr	May	Jun	
	<i>Pounds</i>	<i>Pounds</i>	<i>Pounds</i>	<i>Pounds</i>	<i>Pounds</i>	<i>Pounds</i>	
AZ	1,925	1,835	2,135	2,075	2,060	1,830	
CA	1,690	1,555	1,795	1,770	1,825	1,710	
FL	1,415	1,365	1,540	1,435	1,400	1,290	
ID	1,660	1,490	1,660	1,640	1,710	1,690	
IL	1,430	1,310	1,480	1,430	1,490	1,420	
IN	1,360	1,300	1,380	1,360	1,445	1,340	
IA	1,515	1,380	1,540	1,500	1,550	1,460	
KY	1,050	985	1,110	1,110	1,120	1,000	
MI	1,520	1,405	1,565	1,525	1,605	1,530	
MN	1,505	1,385	1,550	1,505	1,545	1,475	
MO	1,230	1,140	1,310	1,290	1,300	1,140	
NM	1,740	1,615	1,770	1,740	1,805	1,710	
NY	1,430	1,320	1,480	1,460	1,530	1,460	
OH	1,430	1,310	1,410	1,420	1,560	1,450	
PA	1,475	1,375	1,565	1,545	1,605	1,495	
TX	1,480	1,430	1,625	1,545	1,515	1,330	
VT	1,410	1,285	1,440	1,415	1,505	1,445	
VA	1,295	1,205	1,335	1,320	1,345	1,240	
WA	1,845	1,695	1,885	1,870	1,935	1,880	
WI	1,415	1,300	1,465	1,435	1,510	1,440	
20-Sts	1,518	1,404	1,584	1,554	1,611	1,516	
	Jul	Aug	Sep	Oct	Nov	Dec	Annual Avg.
AZ	1,620	1,580	1,550	1,725	1,755	1,830	21,873
CA	1,710	1,770	1,705	1,760	1,715	1,775	20,777
FL	1,190	1,045	1,020	1,025	1,115	1,320	15,177
ID	1,770	1,770	1,700	1,750	1,680	1,730	20,292
IL	1,310	1,280	1,300	1,340	1,330	1,430	16,496
IN	1,325	1,300	1,275	1,325	1,275	1,355	16,066
IA	1,430	1,400	1,395	1,455	1,420	1,495	17,521
KY	985	975	960	1,015	1,005	1,110	12,414
MI	1,550	1,530	1,485	1,520	1,480	1,550	18,244
MN	1,420	1,385	1,335	1,400	1,380	1,495	17,391
MO	1,080	1,000	1,030	1,130	1,180	1,200	14,069
NM	1,690	1,635	1,600	1,685	1,660	1,720	20,362
NY	1,460	1,465	1,390	1,420	1,370	1,445	17,235
OH	1,460	1,440	1,400	1,390	1,350	1,480	17,077
PA	1,470	1,455	1,415	1,450	1,420	1,480	17,745
TX	1,225	1,095	1,125	1,255	1,290	1,395	16,284
VT	1,440	1,430	1,380	1,390	1,345	1,430	16,938
VA	1,185	1,280	1,265	1,315	1,315	1,350	15,479
WA	1,940	1,915	1,855	1,885	1,805	1,885	22,409
WI	1,420	1,410	1,360	1,385	1,340	1,420	16,902
20-Sts	1,498	1,489	1,444	1,492	1,460	1,539	18,110

¹ Excludes milk sucked by calves.

**Milk Produced per Cow: by Month,
State, and 20 States, 2000¹**

State	Jan	Feb	Mar	Apr	May	Jun	
	<i>Pounds</i>	<i>Pounds</i>	<i>Pounds</i>	<i>Pounds</i>	<i>Pounds</i>	<i>Pounds</i>	
AZ	1,925	1,935	2,115	2,080	2,095	1,890	
CA	1,815	1,710	1,825	1,815	1,850	1,760	
FL	1,450	1,410	1,530	1,470	1,460	1,325	
ID	1,730	1,610	1,720	1,710	1,800	1,760	
IL	1,500	1,480	1,580	1,520	1,550	1,440	
IN	1,400	1,330	1,435	1,370	1,400	1,340	
IA	1,555	1,500	1,610	1,560	1,610	1,530	
KY	1,155	1,090	1,205	1,165	1,120	1,000	
MI	1,590	1,510	1,640	1,610	1,640	1,595	
MN	1,545	1,465	1,585	1,530	1,555	1,490	
MO	1,240	1,220	1,350	1,330	1,320	1,200	
NM	1,780	1,730	1,890	1,835	1,910	1,790	
NY	1,450	1,370	1,495	1,460	1,530	1,470	
OH	1,470	1,410	1,530	1,430	1,510	1,400	
PA	1,520	1,475	1,620	1,590	1,615	1,495	
TX	1,515	1,480	1,655	1,550	1,540	1,355	
VT	1,485	1,405	1,515	1,475	1,530	1,470	
VA	1,425	1,335	1,450	1,410	1,400	1,250	
WA	1,900	1,795	1,945	1,935	1,980	1,910	
WI	1,445	1,375	1,495	1,450	1,515	1,450	
20-Sts	1,579	1,506	1,632	1,593	1,636	1,547	
	Jul	Aug	Sep	Oct	Nov	Dec	Annual Avg.
AZ	1,735	1,555	1,520	1,620	1,550	1,735	21,705
CA	1,825	1,750	1,685	1,735	1,670	1,735	21,169
FL	1,210	1,120	1,070	1,120	1,200	1,325	15,675
ID	1,820	1,790	1,720	1,760	1,670	1,730	20,816
IL	1,430	1,400	1,350	1,400	1,390	1,460	17,450
IN	1,364	1,327	1,275	1,345	1,320	1,380	16,310
IA	1,540	1,510	1,450	1,490	1,450	1,495	18,298
KY	1,015	1,015	980	1,040	1,010	1,045	12,803
MI	1,620	1,605	1,515	1,580	1,540	1,575	19,017
MN	1,455	1,435	1,380	1,435	1,405	1,485	17,777
MO	1,210	1,130	1,080	1,180	1,170	1,180	14,662
NM	1,730	1,730	1,645	1,690	1,580	1,670	20,944
NY	1,490	1,480	1,410	1,430	1,375	1,410	17,376
OH	1,420	1,390	1,360	1,360	1,325	1,400	17,027
PA	1,500	1,485	1,420	1,470	1,425	1,470	18,081
TX	1,235	1,185	1,145	1,275	1,225	1,305	16,480
VT	1,475	1,455	1,410	1,445	1,380	1,435	17,528
VA	1,265	1,250	1,220	1,285	1,270	1,330	15,842
WA	1,965	1,940	1,845	1,860	1,765	1,820	22,644
WI	1,480	1,465	1,405	1,430	1,370	1,420	17,306
20-Sts	1,561	1,525	1,464	1,511	1,459	1,519	18,532

¹ Excludes milk sucked by calves.

**Milk Production: Total by Month, State,
and 20 States, 1999¹**

State	Jan	Feb	Mar	Apr	May	Jun	
	<i>Million Pounds</i>	<i>Million Pounds</i>	<i>Million Pounds</i>	<i>Million Pounds</i>	<i>Million Pounds</i>	<i>Million Pounds</i>	
AZ	254	242	282	274	276	245	
CA	2,440	2,250	2,606	2,577	2,663	2,503	
FL	224	216	245	230	224	205	
ID	505	456	513	512	537	536	
IL	179	164	185	177	183	173	
IN	186	177	188	185	197	182	
IA	333	302	336	327	336	317	
KY	142	133	149	149	149	133	
MI	442	410	463	454	486	465	
MN	820	755	845	820	842	804	
MO	202	185	211	206	208	181	
NM	383	360	409	402	419	400	
NY	1,004	927	1,036	1,022	1,074	1,025	
OH	372	341	367	369	406	377	
PA	910	846	961	950	987	918	
TX	503	488	556	528	523	460	
VT	228	208	233	228	241	230	
VA	158	147	163	161	164	150	
WA	458	420	469	464	478	464	
WI	1,936	1,776	2,001	1,959	2,063	1,970	
20-Sts	11,679	10,803	12,218	11,994	12,456	11,738	
	Jul	Aug	Sep	Oct	Nov	Dec	Annual Total ²
AZ	219	213	209	233	237	247	2,931
CA	2,510	2,604	2,517	2,605	2,543	2,641	30,459
FL	189	165	160	160	174	206	2,398
ID	570	573	553	572	553	573	6,453
IL	160	155	157	162	161	173	2,029
IN	180	177	172	179	175	187	2,185
IA	309	302	301	313	305	321	3,802
KY	130	129	127	133	132	145	1,651
MI	474	462	444	454	441	460	5,455
MN	774	762	734	763	752	807	9,478
MO	170	157	162	179	186	190	2,237
NM	397	384	376	396	392	406	4,724
NY	1,025	1,028	976	994	959	1,012	12,082
OH	380	373	363	360	350	382	4,440
PA	903	895	872	895	878	916	10,931
TX	424	379	389	434	449	485	5,618
VT	229	229	221	221	215	227	2,710
VA	142	155	153	159	159	162	1,873
WA	483	473	458	462	442	464	5,535
WI	1,943	1,926	1,855	1,886	1,825	1,931	23,071
20-Sts	11,611	11,541	11,199	11,560	11,328	11,935	140,062

¹ Excludes milk sucked by calves.

² Total milk production for year.

**Milk Production: Total by Month, State,
and 20 States, 2000¹**

State	Jan	Feb	Mar	Apr	May	Jun	
	<i>Million Pounds</i>	<i>Million Pounds</i>	<i>Million Pounds</i>	<i>Million Pounds</i>	<i>Million Pounds</i>	<i>Million Pounds</i>	
AZ	264	265	290	287	289	261	
CA	2,708	2,558	2,739	2,733	2,799	2,672	
FL	226	221	240	232	231	209	
ID	574	535	574	580	619	618	
IL	180	178	190	182	186	173	
IN	195	188	205	199	202	193	
IA	334	323	346	335	346	329	
KY	150	142	159	155	149	132	
MI	474	447	485	481	494	485	
MN	834	791	856	826	840	797	
MO	196	192	211	209	206	186	
NM	422	412	454	442	470	446	
NY	1,015	959	1,044	1,015	1,056	1,011	
OH	381	365	399	375	396	367	
PA	938	910	1,001	978	993	922	
TX	530	518	579	543	539	474	
VT	238	225	242	236	245	235	
VA	171	160	174	169	168	150	
WA	467	442	478	478	489	472	
WI	1,962	1,863	2,021	1,956	2,041	1,950	
20-Sts	12,259	11,694	12,687	12,411	12,758	12,082	
	Jul	Aug	Sep	Oct	Nov	Dec	Annual Total ²
AZ	243	218	213	227	217	243	3,017
CA	2,783	2,683	2,595	2,681	2,589	2,700	32,240
FL	190	175	168	175	187	207	2,461
ID	646	635	612	627	591	612	7,223
IL	172	168	162	167	164	172	2,094
IN	198	195	189	199	195	207	2,365
IA	331	325	312	320	312	321	3,934
KY	135	134	129	136	132	137	1,690
MI	489	485	455	477	460	473	5,705
MN	778	761	731	761	738	780	9,493
MO	186	173	165	179	177	178	2,258
NM	436	441	424	441	412	436	5,236
NY	1,021	1,009	956	964	925	945	11,920
OH	373	366	359	359	350	371	4,461
PA	929	919	879	908	878	901	11,156
TX	431	412	396	440	423	450	5,735
VT	236	233	224	228	218	227	2,787
VA	152	150	145	153	151	158	1,901
WA	485	479	456	461	438	448	5,593
WI	1,991	1,967	1,881	1,910	1,828	1,889	23,259
20-Sts	12,205	11,928	11,451	11,813	11,385	11,855	144,528

¹ Excludes milk sucked by calves.

² Total milk production for year.

**Milk Cows and Production: Number and Milk Produced
by Quarter, State, and United States, 1999**

State	Milk Cows ¹				Milk Production ²			
	Jan-Mar	Apr-Jun	Jul-Sep	Oct-Dec	Jan-Mar	Apr-Jun	Jul-Sep	Oct-Dec
	<i>1,000 Head</i>	<i>1,000 Head</i>	<i>1,000 Head</i>	<i>1,000 Head</i>	<i>Million Pounds</i>	<i>Million Pounds</i>	<i>Million Pounds</i>	<i>Million Pounds</i>
AL	27	27	27	27	106	100	78	92
AK	0.9	1.0	1.0	0.9	3.47	3.60	3.48	3.03
AZ	132	133	135	135	778	795	641	717
AR	42	42	42	42	135	138	122	125
CA	1,448	1,460	1,472	1,484	7,296	7,743	7,631	7,789
CO	83	82	83	84	433	420	434	441
CT	29	29	29	28	134	136	126	124
DE	11.0	11.0	11.0	11.0	43.9	43.6	41.0	42.5
FL	158	160	158	156	685	659	514	540
GA	90	90	88	88	400	392	313	344
HI	8.6	8.5	8.6	8.6	30.4	32.5	30.3	26.5
ID	306	314	324	329	1,474	1,585	1,696	1,698
IL	125	123	121	121	528	533	472	496
IN	136	136	136	137	551	564	529	541
IA	219	217	216	215	971	980	912	939
KS	85	86	86	88	350	360	325	370
KY	135	133	132	131	424	431	386	410
LA	62	61	61	61	209	192	145	165
ME	42	42	41	40	173	178	173	165
MD	86	85	85	85	335	353	332	345
MA	25	25	24	24	105	109	104	102
MI	293	302	302	298	1,315	1,405	1,380	1,355
MN	545	545	548	543	2,420	2,466	2,270	2,322
MS	39	38	37	36	160	149	114	129
MO	162	160	157	158	598	595	489	555
MT	18	18	18	18	74	77	76	76
NE	72	73	74	75	277	285	281	296
NV	25	25	25	25	113	115	115	113
NH	19	19	19	19	81	83	79	78
NJ	18	18	17	16	74	74	68	64
NM	225	232	235	236	1,152	1,221	1,157	1,194
NY	701	701	702	700	2,967	3,121	3,029	2,965
NC	73	73	73	73	317	311	289	299
ND	50	49	48	49	176	178	168	167
OH	260	260	259	259	1,080	1,152	1,116	1,092
OK	92	92	92	92	325	317	294	313
OR	88	89	89	89	403	425	423	414
PA	615	615	615	618	2,717	2,855	2,670	2,689
RI	2.0	2.0	2.0	1.9	7.9	8.2	7.7	7.2
SC	24	24	23	23	103	98	79	89
SD	102	102	102	102	367	380	375	385
TN	100	98	95	95	379	373	320	345
TX	341	344	346	347	1,547	1,511	1,192	1,368
UT	91	92	93	93	384	413	413	408
VT	162	160	160	159	669	699	679	663
VA	122	122	121	121	468	475	450	480
WA	248	247	248	245	1,347	1,406	1,414	1,368
WV	18	18	18	18	71	69	66	69
WI	1,367	1,366	1,366	1,361	5,713	5,992	5,724	5,642
WY	5.9	5.9	6.0	6.0	18.9	20.1	21.0	19.8
US ³	9,128	9,155	9,171	9,171	40,489	42,021	39,766	40,440

¹ Quarterly average includes dry cows, excludes heifers not yet fresh.

² Excludes milk sucked by calves.

³ May not add due to rounding.

**Milk Cows and Production: Number and Milk Produced
by Quarter, State, and United States, 2000**

State	Milk Cows ¹				Milk Production ²			
	Jan-Mar	Apr-Jun	Jul-Sep	Oct-Dec	Jan-Mar	Apr-Jun	Jul-Sep	Oct-Dec
	<i>1,000 Head</i>	<i>1,000 Head</i>	<i>1,000 Head</i>	<i>1,000 Head</i>	<i>Million Pounds</i>	<i>Million Pounds</i>	<i>Million Pounds</i>	<i>Million Pounds</i>
AL	26	25	24	23	104	94	72	78
AK	0.9	0.9	0.9	1.0	2.95	3.41	3.28	3.41
AZ	137	138	140	140	819	837	674	687
AR	42	42	42	41	141	141	118	124
CA	1,496	1,512	1,533	1,550	8,005	8,204	8,061	7,970
CO	87	89	89	90	466	488	487	483
CT	27	26	26	26	129	122	113	114
DE	11.0	10.5	9.5	9.0	47.0	37.0	32.0	33.1
FL	157	158	157	156	687	672	533	569
GA	88	88	87	86	402	384	310	337
HI	8.4	8.4	8.0	7.6	28.4	32.2	29.8	25.9
ID	333	345	355	355	1,683	1,817	1,893	1,830
IL	120	120	120	118	548	541	502	503
IN	141	144	147	149	588	594	582	601
IA	215	215	215	215	1,003	1,010	968	953
KS	88	89	91	94	385	370	370	395
KY	131	133	132	131	451	436	398	405
LA	60	58	57	57	210	188	144	163
ME	40	40	39	39	171	172	166	160
MD	85	84	83	82	357	347	323	324
MA	24	23	22	22	103	102	95	92
MI	297	301	301	300	1,406	1,460	1,429	1,410
MN	540	538	532	527	2,481	2,463	2,270	2,279
MS	36	36	36	36	162	144	112	126
MO	157	156	153	151	599	601	524	534
MT	18	18	18	19	77	80	79	79
NE	75	75	77	79	309	315	312	316
NV	25	25	25	25	115	118	123	120
NH	19	18	18	18	81	80	75	74
NJ	16	16	16	16	69	69	65	63
NM	238	245	255	261	1,288	1,358	1,301	1,289
NY	699	691	682	672	3,018	3,082	2,986	2,834
NC	72	72	71	69	316	303	282	288
ND	49	49	48	48	173	183	177	168
OH	260	262	263	264	1,145	1,138	1,098	1,080
OK	92	91	91	91	331	331	319	314
OR	90	90	90	90	422	430	428	415
PA	617	616	619	616	2,849	2,893	2,727	2,687
RI	1.9	1.8	1.8	1.6	7.7	7.5	6.8	6.2
SC	23	23	22	22	102	98	81	88
SD	102	103	102	101	399	413	413	409
TN	96	95	94	94	380	365	320	340
TX	350	350	348	345	1,627	1,556	1,239	1,313
UT	94	96	97	95	410	434	438	405
VT	160	160	160	158	705	716	693	673
VA	120	120	120	119	505	487	447	462
WA	246	247	247	247	1,387	1,439	1,420	1,347
WV	17	17	17	17	70	67	64	64
WI	1,355	1,347	1,342	1,333	5,846	5,947	5,839	5,627
WY	6.0	5.8	5.4	5.0	19.8	20.3	18.9	17.0
US ³	9,188	9,213	9,229	9,211	42,630	43,189	41,161	40,678

¹ Quarterly average includes dry cows, excludes heifers not yet fresh.

² Excludes milk sucked by calves.

³ May not add due to rounding.

**Milk Cows: Number of Operations by State
and United States, 1999-2000¹**

State	Operations with Milk Cows	
	1999	2000
	<i>Number</i>	<i>Number</i>
AL	340	300
AK	30	30
AZ	250	250
AR	1,100	1,000
CA	2,600	2,500
CO	900	860
CT	350	330
DE	130	120
FL	550	520
GA	850	810
HI	50	50
ID	1,200	1,100
IL	2,200	2,100
IN	3,200	3,100
IA	4,000	3,800
KS	1,400	1,300
KY	3,200	3,000
LA	700	660
ME	700	650
MD	1,100	1,000
MA	400	380
MI	3,700	3,500
MN	9,100	8,500
MS	550	520
MO	4,100	3,900
MT	650	600
NE	1,300	1,200
NV	150	150
NH	300	270
NJ	340	300
NM	500	500
NY	8,200	7,900
NC	1,000	950
ND	1,100	1,000
OH	5,700	5,500
OK	2,000	1,900
OR	900	850
PA	11,000	10,700
RI	40	40
SC	260	250
SD	1,700	1,600
TN	1,800	1,600
TX	2,800	2,500
UT	860	830
VT	1,800	1,700
VA	1,700	1,600
WA	1,200	1,100
WV	700	650
WI	22,000	21,000
WY	300	280
US	111,000	105,250

¹ An operation is any place having one or more head of milk cows, excluding cows used to nurse calves, on hand at any time during the year.

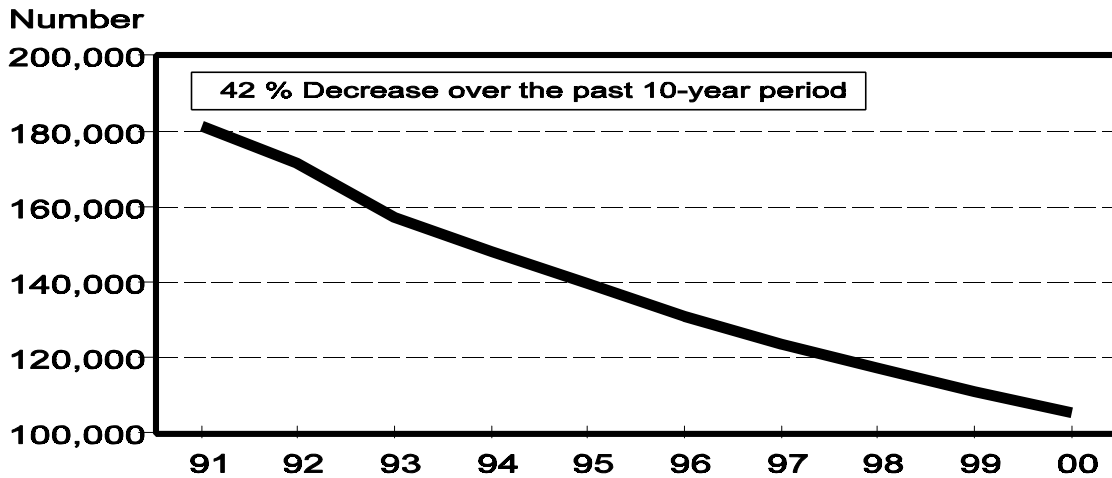
Milk Cows: Number of Operations by Size Group, Selected States, and United States, 1999-2000^{1 2}

State	Operations Having					
	1-29 Head		30-49 Head		50-99 Head	
	1999	2000	1999	2000	1999	2000
	<i>Number</i>	<i>Number</i>	<i>Number</i>	<i>Number</i>	<i>Number</i>	<i>Number</i>
AZ	120	120			10	10
CA	380	300	70	70	70	70
CO	630	610	20	15	45	40
FL	300	290	10	5	35	25
GA	400	370	20	20	110	110
ID	300	250	120	100	250	220
IL	490	490	450	440	900	820
IN	1,700	1,600	580	560	570	580
IA	1,000	950	1,100	1,000	1,400	1,300
KY	1,400	1,300	600	540	900	870
MD	230	170	180	155	420	400
MI	1,000	1,000	700	630	1,000	900
MN	1,400	1,300	3,300	3,000	3,400	3,200
MO	1,800	1,700	760	740	940	900
NM	340	340			5	5
NY	1,400	1,400	1,600	1,500	3,200	3,000
NC	500	470	45	40	180	180
OH	2,700	2,600	880	870	1,400	1,300
OK	1,300	1,200	130	140	270	280
OR	430	400	30	30	90	90
PA	2,300	2,000	3,700	3,800	3,800	3,700
SD	780	700	290	250	360	390
TN	800	700	200	150	440	400
TX	1,300	1,100	190	140	380	330
UT	280	300	60	55	190	150
VT	130	130	320	280	870	820
VA	600	560	150	140	480	450
WA	410	360	50	40	120	120
WI	4,000	3,900	6,900	6,000	8,400	8,300
Oth Sts	4,500	4,500	1,600	1,200	2,700	2,400
US	32,920	31,110	24,055	21,910	32,935	31,360

See footnotes at end of table.

--continued

**Milk Cow Operations, 1991-2000
United States**



Milk Cows: Number of Operations by Size Group, Selected States, and United States, 1999-2000^{1 2} (continued)

State	Operations Having					
	100-199 Head		200-499 Head		500+ Head	
	1999	2000	1999	2000	1999	2000
	<i>Number</i>	<i>Number</i>	<i>Number</i>	<i>Number</i>	<i>Number</i>	<i>Number</i>
AZ	10	10	20	20	90	90
CA	250	230	730	730	1,100	1,100
CO	70	65	80	80	55	50
FL	40	35	70	65	95	100
GA	190	180	100	100	30	30
ID	210	190	170	180	150	160
IL	300	280	55	65	5	5
IN	300	290	40	55	10	15
IA	410	450	80	90	10	10
KY	250	240	45	45	5	5
MD	215	210	45	55	10	10
MI	750	700	200	215	50	55
MN	700	700	250	250	50	50
MO	540	510	60	45	5	5
NM	15	10	20	15	120	130
NY	1,400	1,400	480	480	120	120
NC	190	170	70	75	15	15
OH	600	600	110	115	10	15
OK	240	220	50	50	10	10
OR	200	180	120	110	30	40
PA	930	920	255	260	15	20
SD	210	200	40	40	20	20
TN	260	255	90	85	10	10
TX	390	400	370	360	170	170
UT	180	180	120	110	30	35
VT	320	310	130	130	30	30
VA	340	320	120	120	10	10
WA	240	210	250	230	130	140
WI	2,000	2,000	610	660	90	140
Oth Sts	1,500	1,400	510	490	80	90
US	13,250	12,865	5,290	5,325	2,550	2,680

¹ An operation is any place having one or more head of milk cows, excluding cows used to nurse calves, on hand at any time during the year.

² Missing data combined with other size groups.

Milk Cows: Percent of Inventory by Size Group, Selected States, and United States, 1999-2000^{1,2}

State	Inventory on Operations Having					
	1-29 Head		30-49 Head		50-99 Head	
	1999	2000	1999	2000	1999	2000
	<i>Percent</i>	<i>Percent</i>	<i>Percent</i>	<i>Percent</i>	<i>Percent</i>	<i>Percent</i>
AZ	0.3	0.3			0.4	0.4
CA	0.1	0.1	0.2	0.2	0.4	0.3
CO	1.4	1.5	0.8	0.6	2.8	2.5
FL	0.5	0.4	0.2	0.1	1.8	1.3
GA	0.5	1.0	1.0	1.0	9.5	9.0
ID	0.6	0.5	1.4	1.1	5.5	4.6
IL	3.8	3.5	12.0	12.0	43.0	41.0
IN	12.0	10.0	19.0	17.0	29.0	28.0
IA	6.0	5.9	17.0	15.0	40.0	38.0
KY	8.0	8.0	16.0	15.0	42.0	43.0
MD	2.3	1.8	6.7	6.2	34.0	32.0
MI	5.0	4.5	8.0	7.5	23.0	21.0
MN	5.0	4.7	22.0	21.0	39.0	38.0
MO	6.0	5.2	17.0	17.0	32.0	31.0
NM	0.3	0.2			0.2	0.2
NY	2.0	2.0	10.0	9.0	31.0	29.0
NC	1.8	1.9	2.2	2.1	18.0	18.0
OH	10.0	9.7	13.0	13.0	34.0	32.0
OK	4.4	4.0	5.6	6.0	19.0	21.0
OR	0.7	0.7	1.3	1.3	8.0	7.0
PA	5.0	4.3	25.0	25.0	38.0	37.0
SD	5.0	4.5	11.0	9.5	25.0	27.0
TN	2.5	2.2	6.2	5.3	30.0	29.0
TX	1.0	1.0	2.0	1.4	8.0	6.6
UT	0.9	0.9	2.1	2.1	14.0	11.0
VT	0.7	0.9	9.3	8.1	32.0	31.0
VA	3.5	3.3	4.0	4.0	26.0	26.0
WA	0.3	0.2	0.8	0.6	2.9	3.2
WI	4.5	4.3	20.0	17.0	40.0	39.0
Oth Sts	4.0	3.5	8.0	6.5	27.0	26.0
US	3.1	2.9	10.1	9.1	23.2	22.0

See footnotes at end of table.

--continued

Milk Cows: Percent of Inventory by Size Group, Selected States, and United States, 1999-2000^{1 2}(continued)

State	Inventory on Operations Having					
	100-199 Head		200-499 Head		500+ Head	
	1999	2000	1999	2000	1999	2000
	<i>Percent</i>	<i>Percent</i>	<i>Percent</i>	<i>Percent</i>	<i>Percent</i>	<i>Percent</i>
AZ	0.8	0.8	4.5	4.5	94.0	94.0
CA	3.3	2.9	17.0	16.5	79.0	80.0
CO	9.0	8.4	25.0	28.0	61.0	59.0
FL	3.5	3.2	14.0	13.0	80.0	82.0
GA	31.0	29.0	30.0	30.0	28.0	30.0
ID	9.5	7.8	17.0	16.0	66.0	70.0
IL	28.0	27.0	11.0	14.0	2.2	2.5
IN	27.0	26.0	7.5	10.0	5.5	9.0
IA	23.0	26.0	10.0	11.0	4.0	4.1
KY	23.0	23.0	9.0	9.0	2.0	2.0
MD	33.0	32.0	13.0	16.0	11.0	12.0
MI	32.0	30.0	18.0	20.0	14.0	17.0
MN	14.0	15.0	14.0	14.0	6.0	7.3
MO	36.0	36.0	9.0	7.5		3.3
NM	1.0	0.6	2.5	2.0	96.0	97.0
NY	27.0	28.0	17.0	18.0	13.0	14.0
NC	36.0	32.0	27.0	29.0	15.0	17.0
OH	28.0	29.0	12.0	12.0	3.0	4.3
OK	33.0	30.0	14.0	14.0	24.0	25.0
OR	26.0	22.0	36.0	33.0	28.0	36.0
PA	19.0	20.0	11.0	11.0	2.0	2.7
SD	28.0	26.0	10.0	11.0	21.0	22.0
TN	34.0	35.0	21.0	22.0	6.3	6.5
TX	17.0	17.0	32.0	32.0	40.0	42.0
UT	24.0	25.0	35.0	32.0	24.0	29.0
VT	25.0	25.0	20.0	22.0	13.0	13.0
VA	36.0	35.0	25.0	26.0	5.5	5.7
WA	14.0	12.0	30.0	29.0	52.0	55.0
WI	18.0	18.0	13.0	14.0	4.5	7.7
Oth Sts	29.0	28.0	20.0	21.0	12.0	15.0
US	18.4	18.0	16.3	16.6	28.9	31.4

¹ Percents reflect average distributions of various probability surveys conducted during the year but are based primarily on beginning-of-year and mid-year surveys.

² Missing data combined with other size groups.

Milk Production: Percent of Production by Size Group, Selected States, and United States, 1999-2000 ^{1 2}

State	1-29 Head		30-49 Head		50-99 Head	
	1999	2000	1999	2000	1999	2000
	<i>Percent</i>	<i>Percent</i>	<i>Percent</i>	<i>Percent</i>	<i>Percent</i>	<i>Percent</i>
AZ	0.1	0.1			0.3	0.3
CA	0.1	0.1	0.1	0.1	0.4	0.4
CO	1.0	1.0	1.0	0.5	2.0	1.5
FL	0.3	0.2	0.1	0.1	1.6	1.0
GA	0.5	0.5	0.5	0.5	8.0	8.0
ID	0.4	0.2	1.0	0.8	4.1	3.5
IL	2.7	2.9	10.0	10.0	43.0	41.0
IN	10.0	8.0	17.0	15.0	29.0	28.0
IA	4.0	4.0	16.0	14.0	40.0	38.0
KY	5.0	5.0	14.0	14.0	43.0	43.0
MD	2.0	1.5	6.0	5.5	32.0	31.0
MI	4.0	3.0	7.0	6.0	21.0	19.0
MN	3.8	3.5	19.0	19.0	39.0	37.0
MO	3.5	2.7	16.0	16.0	32.0	31.0
NM	0.1	0.1			0.1	0.1
NY	1.5	1.5	8.5	7.5	27.0	25.0
NC	0.4	0.4	1.6	1.6	16.0	17.0
OH	7.0	6.5	11.0	12.0	33.0	31.0
OK	3.3	2.0	4.7	5.0	17.0	20.0
OR	0.5	0.4	1.0	1.0	6.5	5.6
PA	3.5	3.0	23.0	23.0	39.0	37.0
SD	3.8	3.0	9.2	8.0	23.0	23.0
TN	1.5	1.5	4.7	4.5	29.0	28.0
TX	0.4	0.4	1.1	1.0	6.5	5.6
UT	1.0	0.6	2.0	1.7	12.0	9.7
VT	0.4	0.3	7.6	6.7	30.0	28.0
VA	3.0	3.0	3.5	3.5	26.0	25.0
WA	0.2	0.1	0.6	0.3	2.2	2.6
WI	3.0	3.0	19.0	16.0	39.0	37.0
Oth Sts	1.5	1.5	6.5	5.5	26.0	23.0
US	2.0	1.8	8.5	7.7	20.9	19.4

See footnotes at end of table.

--continued

Milk Production: Percent of Production by Size Group, Selected States, and United States, 1999-2000^{1,2}(continued)

State	100-199 Head		200-499 Head		500+ Head	
	1999	2000	1999	2000	1999	2000
	<i>Percent</i>	<i>Percent</i>	<i>Percent</i>	<i>Percent</i>	<i>Percent</i>	<i>Percent</i>
AZ	0.6	0.6	4.5	4.0	94.5	95.0
CA	3.4	2.4	18.0	19.0	78.0	78.0
CO	7.0	7.0	25.0	27.0	64.0	63.0
FL	3.0	2.7	13.0	13.0	82.0	83.0
GA	29.0	27.0	31.0	30.0	31.0	34.0
ID	8.5	6.5	16.0	15.0	70.0	74.0
IL	30.0	28.0	12.0	15.0	2.3	3.1
IN	28.0	28.0	9.0	11.0	7.0	10.0
IA	24.0	27.0	11.0	12.0	5.0	5.0
KY	26.0	26.0	10.0	10.0	2.0	2.0
MD	34.0	33.0	14.0	17.0	12.0	12.0
MI	32.0	30.0	19.0	22.0	17.0	20.0
MN	15.0	16.0	16.0	16.0	7.2	8.5
MO	38.0	38.0	10.5	8.5		3.8
NM	0.6	0.4	2.2	1.4	97.0	98.0
NY	28.0	29.0	20.0	21.0	15.0	16.0
NC	38.0	33.0	28.0	30.0	16.0	18.0
OH	31.0	31.0	14.0	14.0	4.0	5.5
OK	34.0	30.0	14.0	15.0	27.0	28.0
OR	24.0	19.0	36.0	32.0	32.0	42.0
PA	20.0	22.0	12.0	12.0	2.5	3.0
SD	29.0	27.0	11.0	13.0	24.0	26.0
TN	35.0	36.0	23.0	22.0	6.8	8.0
TX	15.0	15.0	32.0	31.0	45.0	47.0
UT	23.0	24.0	35.0	33.0	27.0	31.0
VT	26.0	26.0	22.0	23.0	14.0	16.0
VA	36.0	35.0	26.0	27.0	5.5	6.5
WA	12.0	10.0	30.0	29.0	55.0	58.0
WI	20.0	19.0	14.0	16.0	5.0	9.0
Oth Sts	30.0	29.5	20.0	22.5	16.0	18.0
US	17.9	17.3	17.3	18.0	33.4	35.8

¹ Percents reflect average distributions of various probability surveys conducted during the year but are based primarily on beginning-of-year and mid-year surveys.

² Missing data combined with other size groups.

Milk Cows: Number of Operations, Percent of Inventory, and Percent of Milk Production by Size Group, United States, 1999-2000¹

Head	Operations		Percent of Inventory		Percent of Production	
	1999	2000	1999	2000	1999	2000
	<i>Number</i>	<i>Number</i>	<i>Percent</i>	<i>Percent</i>	<i>Percent</i>	<i>Percent</i>
1-29	32,920	31,110	3.1	2.9	2.0	1.8
30-49	24,055	21,910	10.1	9.1	8.5	7.7
50-99	32,935	31,360	23.2	22.0	20.9	19.4
100-199	13,250	12,865	18.4	18.0	17.9	17.3
200-499	5,290	5,325	16.3	16.6	17.3	18.0
500-999	1,600	1,700	11.0	12.0	12.5	13.7
1,000-1,999	695	700	10.0	10.2	11.7	11.6
2,000+	255	280	7.9	9.2	9.2	10.5
Total	111,000	105,250	100.0	100.0	100.0	100.0

¹ An operation is any place having one or more head of milk cows, excluding cows used to nurse calves, on hand at any time during the year. Percents reflect average distributions of various probability surveys conducted during the year but are based primarily on beginning-of-year and mid-year surveys.

Reliability Statement

Survey Procedures: Primary data used to determine these estimates were obtained from a sample of producers. Individual States maintain a list of all known milk producers and information on the size of their herd. States use all known sources of producers to ensure that their lists are as complete as possible. Generally, all large producers and a sample of small producers are included in the survey. Questionnaires are mailed to producers near the end of the month to obtain data for the first day of the month. Additional reports are obtained by telephone, as needed, to supplement the mail response.

Estimation Procedures: State offices prepare these estimates using survey indications, historic trends, and any available administrative data. Individual State estimates are reviewed by the Agricultural Statistics Board for reasonableness.

Revision Policy: Milk production, rate per cow, and number of cows are subject to revision the following month for monthly States or the following quarter for the quarterly States. Normally, Federal Market Order sales are the main basis for revisions. However, data for all orders are not available in time for this revision. Estimates are again subject to revisions in February each year based on additional administrative data. In the event that additional changes are necessary, a third revision is possible in February the following year. Estimates are again reviewed after data from the five-year Census of Agriculture are available. No revisions are made after that date.

Reliability: Since all operations with dairy animals are not included in the sample, survey estimates are subject to sampling variability. Survey results are also subject to non-sampling errors such as omissions, duplications, and mistakes in reporting, recording, and processing the data. The effects of these errors cannot be measured directly. They are minimized through rigid quality controls in the data collection process and through a careful review of all reported data for consistency and reasonableness.

To assist users in evaluating the reliability of the estimates in this report, the "Root Mean Square Error" is shown for selected items on the next page. The "Root Mean Square Error" is a statistical measure based on past performance and is computed using the differences between first and final estimates. The "Root Mean Square Error" for milk cow inventory estimates over the past 10 October-December quarters is 1.2 percent. This means that chances are 2 out of 3 that the final October-December estimate will not be above or below the current estimate of 9.21 million head by more than 1.2 percent. Chances are 9 out of 10 that the difference will not exceed 2.2 percent.

Reliability of October-December Milk Estimates ¹

Item	Root Mean Square Error	90% Confidence Level		Difference Between First and Latest Estimates			Quarters	
				Average	Smallest	Largest	First Above Latest	First Below Latest
				<i>Million Pounds</i>	<i>Million Pounds</i>	<i>Million Pounds</i>	<i>Number</i>	<i>Number</i>
Milk Production	<i>Percent</i>	<i>Percent</i>	<i>Million Pounds</i>	<i>Million Pounds</i>	<i>Million Pounds</i>	<i>Million Pounds</i>	<i>Number</i>	<i>Number</i>
	0.5	0.9	366	151	1	385	9	1
All Milk Cows	<i>Percent</i>	<i>Percent</i>	<i>1,000 Head</i>	<i>1,000 Head</i>	<i>1,000 Head</i>	<i>1,000 Head</i>	<i>Number</i>	<i>Number</i>
	1.2	2.2	203	93	2	195	9	1

¹ Based on records for the past 10 October-December quarters.

Index

Page

Estimated Milk Cows and Production: by Month, United States	2
Milk Cows and Production: by Month, 20 Selected States	2
Milk Cows and Production: by Quarter, United States	2
Milk Cows and Production: by State, January	3
Milk Cows and Production: by State, December	4
Milk Cows and Production: by State, and United States	6
Milk Cows and Production: United States, 1991-2000	5
Milk Cows: Number by Month, State, and 20 States, 1999	8
Milk Cows: Number by Month, State, and 20 States, 2000	9
Milk Produced per Cow: by Month, State, and 20 States, 1999	10
Milk Produced per Cow: by Month, State, and 20 States, 2000	11
Milk Production: Total by Month, State, and 20 States, 1999	12
Milk Production: Total by Month, State, and 20 States, 2000	13
Milk Cows and Production: Number and Milk Produced by Quarter, State, and United States, 1999	14
Milk Cows and Production: Number and Milk Produced by Quarter, State, and United States, 2000	15
Milk Cows: Number of Operations, by State, and United States	16
Milk Cows: Number of Operations by Size Group, Selected States and United States	17
Milk Cows: Number of Operations, Percent of Inventory, and Percent of Milk Production by Size Group, United States	22
Milk Cows: Percent of Inventory by Size Group, Selected States and United States	19
Milk Production: Percent of Production by Size, Selected States and United States	21
Reliability Statement: Survey and Estimation Procedures, Revision Policy, and Reliability	23

The next "Milk Production" report will be released at 3 p.m. ET on March 16, 2001.

The United States Department of Agriculture (USDA) prohibits discrimination in all its programs on the basis of race, color, national origin, gender, religion, age, disability, political beliefs, sexual orientation, and marital or family status. (Not all prohibited bases apply to all programs.) Persons with disabilities who require alternative means for communication of program information (braille, large print, audiotape, etc.) should contact the USDA's TARGET Center at 202-720-2600 (voice and TDD).

To file a complaint of discrimination, write USDA, Director, Office of Civil Rights, Room 326-W, Whitten Building, 14th and Independence Avenue, SW, Washington, D.C., 20250-9410, or call 202-720-5964 (voice or TDD). USDA is an equal opportunity provider and employer.

ACCESS TO REPORTS!!

For your convenience, there are several ways to obtain NASS reports, data products, and services:

INTERNET ACCESS

All NASS reports are available free of charge on the worldwide Internet. For access, connect to the Internet and go to the NASS Home Page at: <http://www.usda.gov/nass/>. Select "Today's Reports" or Publications and then Reports by Calendar or Publications and then Search, by Title or Subject.

E-MAIL SUBSCRIPTION

There are two options for subscribing via e-mail. All NASS reports are available by subscription free of charge direct to your e-mail address. 1) Starting with the NASS Home Page at <http://www.usda.gov/nass/>, click on **Publications**, then click on the **Subscribe by E-mail** button which takes you to the page describing e-mail delivery of reports. Finally, click on **Go to the Subscription Page** and follow the instructions. 2) If you do NOT have Internet access, send an e-mail message to: usda-reports@usda.mannlib.cornell.edu. In the body of the message type the word: **list**.

AUTOFAX ACCESS

NASSFax service is available for some reports from your fax machine. Please call 202-720-2000, using the handset attached to your fax. Respond to the voice prompts. Document 0411 is a list of available reports.

----- PRINTED REPORTS OR DATA PRODUCTS

CALL OUR TOLL-FREE ORDER DESK: 800-999-6779 (U.S. and Canada)
Other areas, please call 703-834-0125 FAX: 703-834-0110
(Visa, MasterCard, check, or money order acceptable for payment.)

ASSISTANCE

For **assistance** with general agricultural statistics or further information about NASS or its products or services, contact the **Agricultural Statistics Hotline** at **800-727-9540**, 7:30 a.m. to 4:00 p.m. ET, or e-mail: nass@nass.usda.gov.

Agricultural Outlook Forum 2001



February 22-23, 2001
Arlington, Virginia

USDA's 77th outlook conference will offer timely forecasts of farm prospects and insight on developments affecting the farm economy. The program will feature top business leaders and officials. Networking opportunities abound at this popular event, attended by over 1,300 people last February.

Policy Debate. Future farm policy will be a hot topic during 2001. The Forum will open with high-level panels on the next farm bill and world trade talks. Focus sessions during the two-day program will preview key policy issues on next year's agenda.

Farm Prospects. Attendees will hear leading analysts discuss the 2001 commodity outlook and industry trends, and receive USDA's latest 10-year projections.

Act Now. Get registration details and program updates at the Forum website. Can't attend in person? Sign up now to get speeches by e-mail after the Forum, or download them from the website.

agforum@oce.usda.gov
(202) 720-3050

<http://www.usda.gov/oc/waob/oc2001/press.htm>