



Released July 20, 2023, by the National Agricultural Statistics Service (NASS), Agricultural Statistics Board, United States Department of Agriculture (USDA).

June Milk Production up 0.2 Percent

Milk production in the 24 major States during June totaled 18.1 billion pounds, up 0.2 percent from June 2022. May revised production, at 19.0 billion pounds, was up 0.9 percent from May 2022. The May revision represented an increase of 16 million pounds or less than 0.1 percent from last month's preliminary production estimate.

Production per cow in the 24 major States averaged 2,028 pounds for June, 1 pound above June 2022.

The number of milk cows on farms in the 24 major States was 8.93 million head, 14,000 head more than June 2022, but 20,000 head less than May 2023.

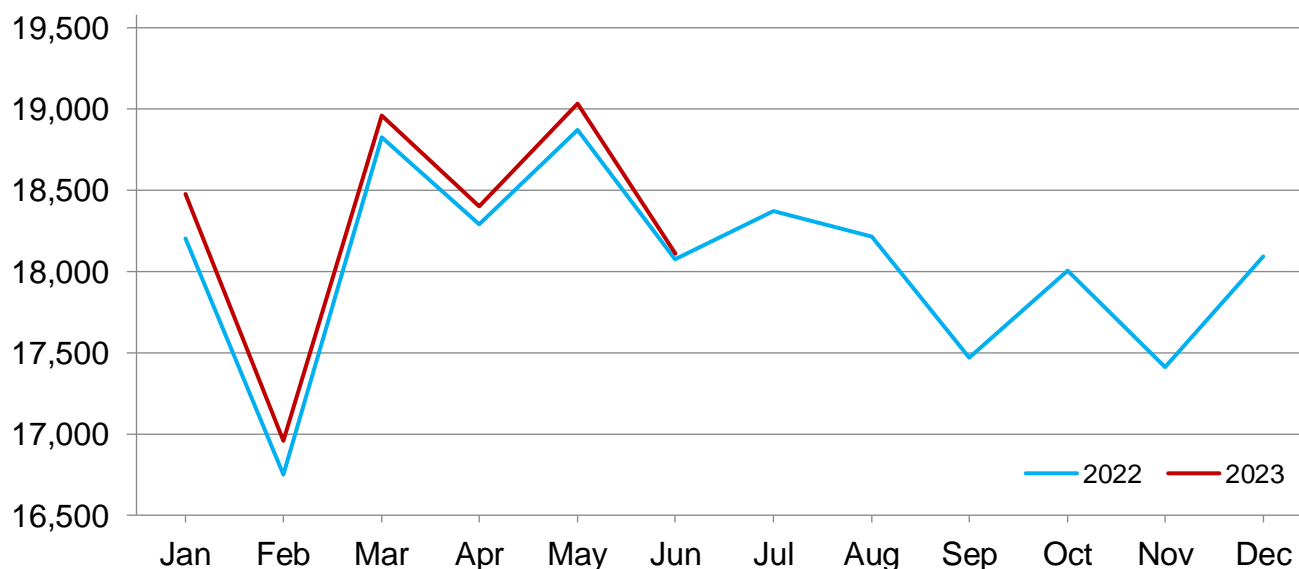
April-June Milk Production up 0.3 Percent

Milk production in the United States during the April - June quarter totaled 58.0 billion pounds, up 0.3 percent from the April - June quarter last year.

The average number of milk cows in the United States during the quarter was 9.42 million head, 8,000 head less than the January - March quarter, but 8,000 head more than the same period last year.

Monthly Milk Production - 24 Selected States

Million pounds



Milk Cows and Production by Quarter – United States: 2022-2023

[May not add due to rounding. Blank data cells indicate estimation period has not yet begun]

Quarter	Milk cows ¹		Milk per cow ²		Milk production ²		
	2022	2023	2022	2023	2022	2023	Change from 2022
	(1,000 head)	(1,000 head)	(pounds)	(pounds)	(million pounds)	(million pounds)	(percent)
January-March	9,384	9,427	6,000	6,031	56,305	56,855	1.0
April-June	9,411	9,419	6,144	6,160	57,822	58,019	0.3
July-September	9,408		5,999		56,438		
October-December	9,404		5,944		55,897		
Annual	9,402		24,087		226,462		

¹ Includes dry cows. Excludes heifers not yet fresh.

² Excludes milk sucked by calves.

Milk Cows and Production by Month – 24 Selected States: 2022-2023

[May not add due to rounding. Blank data cells indicate estimation period has not yet begun]

Month	Milk cows ¹		Milk per cow ²		Milk production ²		
	2022	2023	2022	2023	2022	2023	Change from 2022
	(1,000 head)	(1,000 head)	(pounds)	(pounds)	(million pounds)	(million pounds)	(percent)
January	8,876	8,927	2,051	2,069	18,205	18,474	1.5
February	8,885	8,946	1,885	1,896	16,750	16,958	1.2
March	8,908	8,959	2,113	2,117	18,827	18,962	0.7
April	8,908	8,945	2,053	2,057	18,291	18,401	0.6
May	8,921	8,949	2,115	2,127	18,871	19,033	0.9
June	8,915	8,929	2,027	2,028	18,074	18,111	0.2
July	8,920		2,060		18,373		
August	8,927		2,040		18,212		
September	8,927		1,957		17,470		
October	8,931		2,016		18,005		
November	8,924		1,951		17,413		
December	8,918		2,029		18,093		
Annual	8,913		24,300		216,584		

¹ Includes dry cows. Excludes heifers not yet fresh.

² Excludes milk sucked by calves.

Estimated Milk Cows and Production by Month – United States: 2022-2023

[May not add due to rounding. Blank data cells indicate estimation period has not yet begun]

Month	Milk cows ¹		Milk per cow ²		Milk production ²		
	2022	2023	2022	2023	2022	2023	Change from 2022
	(1,000 head)	(1,000 head)	(pounds)	(pounds)	(million pounds)	(million pounds)	(percent)
January	9,367	9,408	2,034	2,052	19,050	19,308	1.4
February	9,380	9,429	1,870	1,880	17,540	17,724	1.0
March	9,404	9,444	2,096	2,099	19,715	19,823	0.5
April	9,404	9,425	2,036	2,039	19,147	19,219	0.4
May	9,417	9,424	2,098	2,110	19,755	19,884	0.7
June	9,413	9,408	2,010	2,011	18,920	18,916	(Z)
July	9,413		2,038		19,180		
August	9,406		2,022		19,016		
September	9,406		1,939		18,242		
October	9,412		1,998		18,809		
November	9,404		1,934		18,184		
December	9,396		2,012		18,904		
Annual	9,402		24,087		226,462		

(Z) Less than half of the unit shown.

¹ Includes dry cows. Excludes heifers not yet fresh.

² Excludes milk sucked by calves.

Milk Cows and Production – 24 Selected States: June 2022 and 2023

[May not add due to rounding]

State	Milk cows ¹		Milk per cow ²		Milk production ²		
	2022	2023	2022	2023	2022	2023	Change from 2022
	(1,000 head)	(1,000 head)	(pounds)	(pounds)	(million pounds)	(million pounds)	(percent)
Arizona	198	198	2,010	2,015	398	399	0.3
California	1,722	1,718	2,015	1,995	3,470	3,427	-1.2
Colorado	207	206	2,155	2,155	446	444	-0.4
Florida	96	92	1,690	1,735	162	160	-1.2
Georgia	92	93	1,805	1,840	166	171	3.0
Idaho	655	669	2,145	2,140	1,405	1,432	1.9
Illinois	80	79	1,790	1,835	143	145	1.4
Indiana	185	189	2,000	2,010	370	380	2.7
Iowa	234	240	2,050	2,050	480	492	2.5
Kansas	174	177	1,970	1,965	343	348	1.5
Michigan	427	436	2,280	2,305	974	1,005	3.2
Minnesota	450	454	1,935	1,950	871	885	1.6
New Mexico	289	275	2,050	2,000	592	550	-7.1
New York	623	630	2,105	2,150	1,311	1,355	3.4
Ohio	249	252	1,840	1,875	458	473	3.3
Oregon	126	122	1,770	1,770	223	216	-3.1
Pennsylvania	467	466	1,785	1,770	834	825	-1.1
South Dakota	180	193	1,930	1,920	347	371	6.9
Texas	648	635	2,115	2,050	1,371	1,302	-5.0
Utah	94	93	1,975	1,980	186	184	-1.1
Vermont	117	117	1,810	1,805	212	211	-0.5
Virginia	70	67	1,660	1,725	116	116	-
Washington	260	258	2,020	2,020	525	521	-0.8
Wisconsin	1,272	1,270	2,100	2,125	2,671	2,699	1.0
24-State Total	8,915	8,929	2,027	2,028	18,074	18,111	0.2

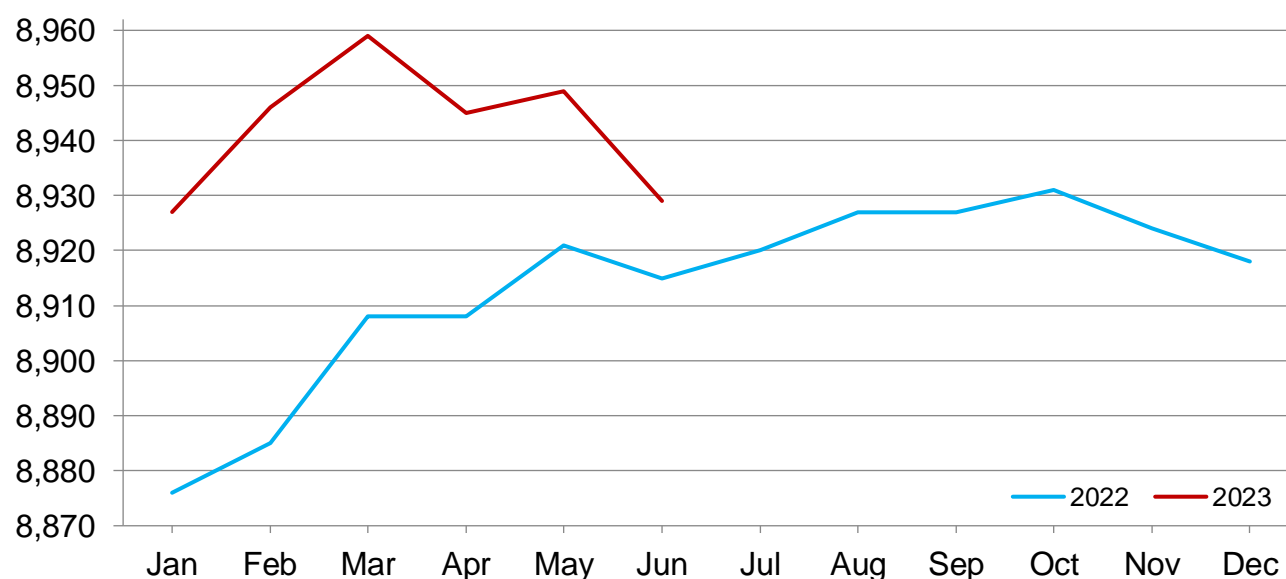
- Represents zero.

¹ Includes dry cows. Excludes heifers not yet fresh.

² Excludes milk sucked by calves.

Monthly Milk Cows - 24 Selected States

Thousand head



Milk Cows and Production – 24 Selected States: May 2022 and 2023

[May not add due to rounding]

State	Milk cows ¹		Milk per cow ²		Milk production ²		Change from 2022
	2022	2023	2022	2023	2022	2023	
	(1,000 head)	(1,000 head)	(pounds)	(pounds)	(million pounds)	(million pounds)	(percent)
Arizona	199	198	2,175	2,190	433	434	0.2
California	1,722	1,719	2,130	2,120	3,668	3,644	-0.7
Colorado	206	206	2,235	2,235	460	460	-
Florida	99	92	1,815	1,855	180	171	-5.0
Georgia	92	93	1,920	1,950	177	181	2.3
Idaho	653	670	2,200	2,215	1,437	1,484	3.3
Illinois	80	79	1,915	1,915	153	151	-1.3
Indiana	187	189	2,060	2,070	385	391	1.6
Iowa	234	240	2,125	2,135	497	512	3.0
Kansas	173	179	2,080	2,055	360	368	2.2
Michigan	427	436	2,380	2,400	1,016	1,046	3.0
Minnesota	452	454	1,980	2,015	895	915	2.2
New Mexico	292	280	2,165	2,160	632	605	-4.3
New York	623	630	2,190	2,225	1,364	1,402	2.8
Ohio	251	252	1,920	1,945	482	490	1.7
Oregon	127	122	1,835	1,830	233	223	-4.3
Pennsylvania	467	466	1,890	1,885	883	878	-0.6
South Dakota	178	193	1,985	1,975	353	381	7.9
Texas	644	645	2,225	2,240	1,433	1,445	0.8
Utah	94	93	2,030	2,030	191	189	-1.0
Vermont	118	118	1,880	1,890	222	223	0.5
Virginia	70	67	1,820	1,845	127	124	-2.4
Washington	260	258	2,075	2,095	540	541	0.2
Wisconsin	1,273	1,270	2,160	2,185	2,750	2,775	0.9
24-State Total	8,921	8,949	2,115	2,127	18,871	19,033	0.9

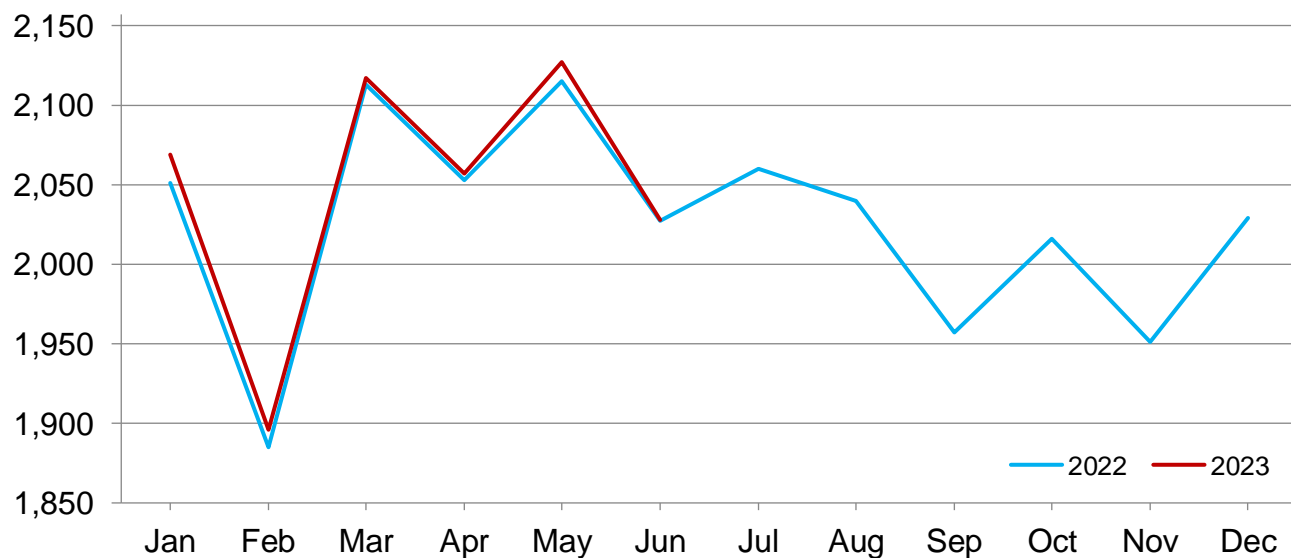
- Represents zero.

¹ Includes dry cows. Excludes heifers not yet fresh.

² Excludes milk sucked by calves.

Monthly Milk Per Cow - 24 Selected States

Pounds



Milk Cows and Production – States and United States: Revised January - March 2022 and 2023

[May not add due to rounding]

State	January - March milk cows ¹		January - March milk production ²		
	2022	2023	2022	2023	Change from 2022
	(1,000 head)	(1,000 head)	(million pounds)	(million pounds)	(percent)
Alabama	3.0	2.5	10.0	9.0	-10.0
Alaska	(D)	(D)	(D)	(D)	(NA)
Arizona	196.0	194.0	1,256.0	1,238.0	-1.4
Arkansas	4.5	3.5	13.0	10.0	-23.1
California	1,720.0	1,723.0	10,563.0	10,450.0	-1.1
Colorado	202.0	201.0	1,300.0	1,295.0	-0.4
Connecticut	18.0	18.5	108.0	109.0	0.9
Delaware	2.8	2.7	13.0	13.0	-
Florida	100.0	91.0	534.0	490.0	-8.2
Georgia	89.0	92.0	519.0	540.0	4.0
Hawaii	(D)	(D)	(D)	(D)	(NA)
Idaho	652.0	667.0	4,005.0	4,146.0	3.5
Illinois	80.0	79.0	442.0	433.0	-2.0
Indiana	187.0	189.0	1,103.0	1,124.0	1.9
Iowa	227.0	240.0	1,390.0	1,474.0	6.0
Kansas	170.0	178.0	1,013.0	1,058.0	4.4
Kentucky	45.0	46.0	233.0	245.0	5.2
Louisiana	9.0	8.0	33.0	30.0	-9.1
Maine	26.0	25.0	137.0	135.0	-1.5
Maryland	41.0	40.0	218.0	213.0	-2.3
Massachusetts	9.5	9.0	48.0	45.0	-6.3
Michigan	428.0	435.0	2,888.0	2,980.0	3.2
Minnesota	454.0	455.0	2,581.0	2,619.0	1.5
Mississippi	7.0	6.0	26.0	23.0	-11.5
Missouri	68.0	64.0	238.0	223.0	-6.3
Montana	10.5	10.0	57.0	53.0	-7.0
Nebraska	57.0	55.0	352.0	340.0	-3.4
Nevada	32.0	34.0	202.0	194.0	-4.0
New Hampshire	10.5	10.0	56.0	53.0	-5.4
New Jersey	4.3	4.1	23.0	22.0	-4.3
New Mexico	294.0	281.0	1,858.0	1,779.0	-4.3
New York	620.0	630.0	3,816.0	3,941.0	3.3
North Carolina	39.0	39.0	238.0	235.0	-1.3
North Dakota	14.5	13.0	80.0	73.0	-8.8
Ohio	249.0	252.0	1,370.0	1,399.0	2.1
Oklahoma	40.0	41.0	189.0	193.0	2.1
Oregon	127.0	125.0	657.0	648.0	-1.4
Pennsylvania	468.0	466.0	2,502.0	2,500.0	-0.1
Rhode Island	0.5	0.5	2.5	2.4	-4.0
South Carolina	9.0	8.5	44.0	41.0	-6.8
South Dakota	174.0	188.0	980.0	1,058.0	8.0
Tennessee	27.0	26.0	126.0	123.0	-2.4
Texas	634.0	655.0	4,072.0	4,281.0	5.1
Utah	94.0	92.0	533.0	521.0	-2.3
Vermont	119.0	118.0	635.0	633.0	-0.3
Virginia	71.0	68.0	368.0	358.0	-2.7
Washington	263.0	257.0	1,568.0	1,538.0	-1.9
West Virginia	5.0	4.5	19.0	17.0	-10.5
Wisconsin	1,273.0	1,270.0	7,829.0	7,891.0	0.8
Wyoming	9.0	9.0	56.1	58.6	4.5
Other States ³	1.0	0.9	1.3	1.4	7.7
United States	9,384.0	9,427.0	56,305.0	56,855.0	1.0

- Represents zero.

(D) Withheld to avoid disclosing data for individual operations.

(NA) Not available.

¹ Includes dry cows. Excludes heifers not yet fresh.

² Excludes milk sucked by calves.

³ Other States includes Alaska and Hawaii.

Milk Cows and Production – States and United States: Preliminary April - June 2022 and 2023

[May not add due to rounding]

State	April - June milk cows ¹		April - June milk production ²		
	2022	2023	2022	2023	Change from 2022
	(1,000 head)	(1,000 head)	(million pounds)	(million pounds)	(percent)
Alabama	2.5	2.5	9.0	8.0	-11.1
Alaska	(D)	(D)	(D)	(D)	(NA)
Arizona	199.0	197.0	1,264.0	1,261.0	-0.2
Arkansas	4.5	3.0	13.0	9.0	-30.8
California	1,722.0	1,719.0	10,752.0	10,614.0	-1.3
Colorado	206.0	206.0	1,347.0	1,348.0	0.1
Connecticut	18.5	18.0	111.0	108.0	-2.7
Delaware	2.8	2.7	12.9	12.9	-
Florida	98.0	92.0	517.0	497.0	-3.9
Georgia	92.0	93.0	519.0	532.0	2.5
Hawaii	(D)	(D)	(D)	(D)	(NA)
Idaho	654.0	669.0	4,220.0	4,324.0	2.5
Illinois	80.0	79.0	446.0	443.0	-0.7
Indiana	186.0	189.0	1,129.0	1,151.0	1.9
Iowa	233.0	240.0	1,454.0	1,498.0	3.0
Kansas	173.0	179.0	1,046.0	1,076.0	2.9
Kentucky	46.0	45.0	251.0	240.0	-4.4
Louisiana	9.0	8.0	32.0	29.0	-9.4
Maine	26.0	25.0	144.0	142.0	-1.4
Maryland	41.0	40.0	216.0	215.0	-0.5
Massachusetts	9.5	9.0	49.0	47.0	-4.1
Michigan	427.0	436.0	2,968.0	3,054.0	2.9
Minnesota	452.0	454.0	2,627.0	2,683.0	2.1
Mississippi	7.0	6.0	26.0	20.0	-23.1
Missouri	68.0	64.0	263.0	246.0	-6.5
Montana	10.0	10.0	57.0	55.0	-3.5
Nebraska	58.0	55.0	359.0	344.0	-4.2
Nevada	32.0	36.0	199.0	201.0	1.0
New Hampshire	10.0	10.0	57.0	54.0	-5.3
New Jersey	4.3	4.0	23.0	22.0	-4.3
New Mexico	291.0	279.0	1,845.0	1,757.0	-4.8
New York	622.0	630.0	3,980.0	4,099.0	3.0
North Carolina	39.0	38.0	239.0	227.0	-5.0
North Dakota	14.0	12.0	81.0	71.0	-12.3
Ohio	250.0	252.0	1,402.0	1,436.0	2.4
Oklahoma	40.0	39.0	186.0	183.0	-1.6
Oregon	127.0	123.0	682.0	660.0	-3.2
Pennsylvania	467.0	466.0	2,572.0	2,558.0	-0.5
Rhode Island	0.5	0.5	2.6	2.5	-3.8
South Carolina	9.0	8.5	44.0	40.0	-9.1
South Dakota	178.0	192.0	1,036.0	1,110.0	7.1
Tennessee	27.0	25.0	130.0	119.0	-8.5
Texas	644.0	642.0	4,199.0	4,160.0	-0.9
Utah	94.0	93.0	560.0	551.0	-1.6
Vermont	118.0	118.0	649.0	649.0	-
Virginia	70.0	67.0	369.0	361.0	-2.2
Washington	261.0	259.0	1,591.0	1,593.0	0.1
West Virginia	5.0	4.5	20.0	17.0	-15.0
Wisconsin	1,273.0	1,269.0	8,062.0	8,130.0	0.8
Wyoming	9.5	9.0	60.3	60.3	-
Other States ³	1.0	0.9	1.3	1.7	30.8
United States	9,411.0	9,419.0	57,822.0	58,019.0	0.3

- Represents zero.

(D) Withheld to avoid disclosing data for individual operations.

(NA) Not available.

¹ Includes dry cows. Excludes heifers not yet fresh.

² Excludes milk sucked by calves.

³ Other States includes Alaska and Hawaii.

Statistical Methodology

Survey Procedures: Primary data used to determine these estimates were obtained from a sample of producers. Individual States maintain a list of all known milk producers and information on the size of their herd. States use all known sources of producers to ensure that their lists are as complete as possible. Generally, all large producers and a sample of small producers are included in the survey. Questionnaires are mailed to producers near the end of the month to obtain data for the first day of the month. Additional reports are obtained by telephone, as needed, to supplement the mail response. Where feasible, States utilize state and federal administrative data to estimate milk production. This eliminates duplication of data gathering by different government agencies. Indications of milk cow inventory are also obtained in the January Cattle Surveys.

Estimation Procedures: Regional Field Offices prepare these estimates by using a combination of survey indications, historic trends, and any available administrative data. Individual State estimates are reviewed by the Agricultural Statistics Board for reasonableness.

Revision Policy: Milk production, milk per cow, and number of milk cows are subject to revision the following month after initial publication for monthly States or the following quarter for the quarterly States. Normally, administrative data from Federal Market Orders, State Departments of Agriculture, or other sources are the main basis for revisions. However, administrative data for all States may not be available in time for these revisions. Estimates are again subject to revisions in February each year based on additional administrative data. In the event that additional changes are necessary, a third revision is possible in February the following year. Estimates are again reviewed after data from the five-year Census of Agriculture are available. No revisions are made after that date.

Reliability: Since all operations with dairy animals are not included in the sample, survey estimates are subject to sampling variability. Survey results are also subject to non-sampling errors such as omissions, duplications, and mistakes in reporting, recording, and processing the data. The effects of these errors cannot be measured directly. They are minimized through rigid quality controls in the data collection process and through a careful review of all reported data for consistency and reasonableness.

To assist users in evaluating the reliability of the estimates in this report, the "Root Mean Square Error" is shown for selected items on the next page. The "Root Mean Square Error" is a statistical measure based on past performance and is computed using the differences between first and final estimates. The "Root Mean Square Error" for milk production estimates over the past 20 quarters is 0.2 percent. This means that chances are 2 out of 3 that the final estimate will not be above or below the current estimate of 58.0 billion pounds by more than 0.2 percent. Chances are 9 out of 10 that the difference will not exceed 0.3 percent.

Reliability of Quarterly Milk Production Estimates

[Based on data for the past 20 quarters]

Item	Root mean square error	90 percent confidence level	Difference between first and latest estimate				
			Average	Smallest	Largest	Quarters	
						Below latest	Above latest
	(percent)	(percent)	(1,000)	(1,000)	(1,000)	(number)	(number)
Milk production	0.2	0.3	67	7	215	12	8
All milk cows	0.1	0.2	7	0	24	13	6

Information Contacts

Listed below are the commodity specialists in the Livestock Branch of the National Agricultural Statistics Service to contact for additional information. E-mail inquiries may be sent to nass@usda.gov.

Travis Averill, Chief, Livestock Branch	(202) 692-0069
Scott Hollis, Head, Livestock Section	(202) 690-2424
Sherry Bertramsen – Livestock Slaughter	(202) 690-8632
Ryan Cowen – Cattle, Cattle on Feed	(202) 720-3040
Kim DaPra – Milk Production and Milk Cows	(512) 501-3266
Donnie Fike – Dairy Products	(202) 690-3347
Anthony Fischer – Hogs and Pigs	(202) 720-3106
Suzanne Richards – Sheep and Goats	(202) 720-4448

Access to NASS Reports

For your convenience, you may access NASS reports and products the following ways:

- All reports are available electronically, at no cost, on the NASS web site: www.nass.usda.gov.
- Both national and state specific reports are available via a free e-mail subscription. To set-up this free subscription, visit www.nass.usda.gov and click on “National” or “State” in upper right corner above “search” box to create an account and select the reports you would like to receive.
- Cornell’s Mann Library has launched a new website housing NASS’s and other agency’s archived reports. The new website, <https://usda.library.cornell.edu>. All email subscriptions containing reports will be sent from the new website, <https://usda.library.cornell.edu>. To continue receiving the reports via e-mail, you will have to go to the new website, create a new account and re-subscribe to the reports. If you need instructions to set up an account or subscribe, they are located at: <https://usda.library.cornell.edu/help>. You should whitelist notifications@usda-esmis.library.cornell.edu in your email client to avoid the emails going into spam/junk folders.

For more information on NASS surveys and reports, call the NASS Agricultural Statistics Hotline at (800) 727-9540, 7:30 a.m. to 4:00 p.m. ET, or e-mail: nass@usda.gov.

The U.S. Department of Agriculture (USDA) prohibits discrimination against its customers, employees, and applicants for employment on the basis of race, color, national origin, age, disability, sex, gender identity, religion, reprisal, and where applicable, political beliefs, marital status, familial or parental status, sexual orientation, or all or part of an individual's income is derived from any public assistance program, or protected genetic information in employment or in any program or activity conducted or funded by the Department. (Not all prohibited bases will apply to all programs and/or employment activities.)

If you wish to file a Civil Rights program complaint of discrimination, complete the [USDA Program Discrimination Complaint Form](#) (PDF), found online at www.ascr.usda.gov/filing-program-discrimination-complaint-usda-customer, or at any USDA office, or call (866) 632-9992 to request the form. You may also write a letter containing all of the information requested in the form. Send your completed complaint form or letter to us by mail at U.S. Department of Agriculture, Director, Office of Adjudication, 1400 Independence Avenue, S.W., Washington, D.C. 20250-9410, by fax (202) 690-7442 or email at program.intake@usda.gov.