



Released August 21, 2023, by the National Agricultural Statistics Service (NASS), Agricultural Statistics Board, United States Department of Agriculture (USDA).

July Milk Production down 0.6 Percent

Milk production in the 24 major States during July totaled 18.3 billion pounds, down 0.6 percent from July 2022. June revised production, at 18.1 billion pounds, was up 0.4 percent from June 2022. The June revision represented an increase of 37 million pounds or 0.2 percent from last month's preliminary production estimate.

Production per cow in the 24 major States averaged 2,047 pounds for July, 13 pounds below July 2022.

The number of milk cows on farms in the 24 major States was 8.92 million head, unchanged from July 2022, but 7,000 head less than June 2023.

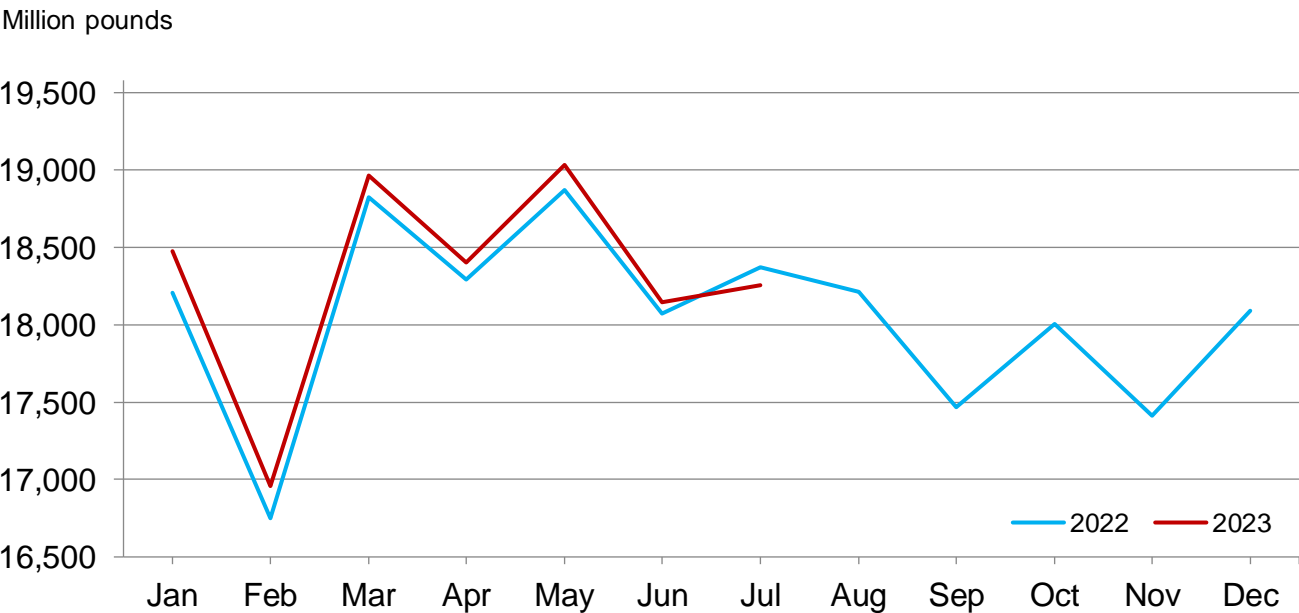
July Milk Production in the United States down 0.5 Percent

Milk production in the United States during July totaled 19.1 billion pounds, down 0.5 percent from July 2022.

Production per cow in the United States averaged 2,029 pounds for July, 9 pounds below July 2022.

The number of milk cows on farms in the United States was 9.40 million head, 13,000 head less than July 2022, and 3,000 head less than June 2023.

Monthly Milk Production - 24 Selected States



Milk Cows and Production by Quarter – United States: 2022-2023

[May not add due to rounding. Blank data cells indicate estimation period has not yet begun]

Quarter	Milk cows ¹		Milk per cow ²		Milk production ²		
	2022	2023	2022	2023	2022	2023	Change from 2022
	(1,000 head)	(1,000 head)	(pounds)	(pounds)	(million pounds)	(million pounds)	(percent)
January-March	9,384	9,427	6,000	6,031	56,305	56,855	1.0
April-June	9,411	9,417	6,144	6,165	57,822	58,056	0.4
July-September	9,408		5,999		56,438		
October-December	9,404		5,944		55,897		
Annual	9,402		24,087		226,462		

¹ Includes dry cows. Excludes heifers not yet fresh.

² Excludes milk sucked by calves.

Milk Cows and Production by Month – 24 Selected States: 2022-2023

[May not add due to rounding. Blank data cells indicate estimation period has not yet begun]

Month	Milk cows ¹		Milk per cow ²		Milk production ²		
	2022	2023	2022	2023	2022	2023	Change from 2022
	(1,000 head)	(1,000 head)	(pounds)	(pounds)	(million pounds)	(million pounds)	(percent)
January	8,876	8,927	2,051	2,069	18,205	18,474	1.5
February	8,885	8,946	1,885	1,896	16,750	16,958	1.2
March	8,908	8,959	2,113	2,117	18,827	18,962	0.7
April	8,908	8,945	2,053	2,057	18,291	18,401	0.6
May	8,921	8,949	2,115	2,127	18,871	19,033	0.9
June	8,915	8,927	2,027	2,033	18,074	18,148	0.4
July	8,920	8,920	2,060	2,047	18,373	18,255	-0.6
August	8,927		2,040		18,212		
September	8,927		1,957		17,470		
October	8,931		2,016		18,005		
November	8,924		1,951		17,413		
December	8,918		2,029		18,093		
Annual	8,913		24,300		216,584		

¹ Includes dry cows. Excludes heifers not yet fresh.

² Excludes milk sucked by calves.

Estimated Milk Cows and Production by Month – United States: 2022-2023

[May not add due to rounding. Blank data cells indicate estimation period has not yet begun]

Month	Milk cows ¹		Milk per cow ²		Milk production ²		
	2022	2023	2022	2023	2022	2023	Change from 2022
	(1,000 head)	(1,000 head)	(pounds)	(pounds)	(million pounds)	(million pounds)	(percent)
January	9,367	9,408	2,034	2,052	19,050	19,308	1.4
February	9,380	9,429	1,870	1,880	17,540	17,724	1.0
March	9,404	9,444	2,096	2,099	19,715	19,823	0.5
April	9,404	9,425	2,036	2,039	19,147	19,219	0.4
May	9,417	9,424	2,098	2,110	19,755	19,884	0.7
June	9,413	9,403	2,010	2,016	18,920	18,953	0.2
July	9,413	9,400	2,038	2,029	19,180	19,075	-0.5
August	9,406		2,022		19,016		
September	9,406		1,939		18,242		
October	9,412		1,998		18,809		
November	9,404		1,934		18,184		
December	9,396		2,012		18,904		
Annual	9,402		24,087		226,462		

¹ Includes dry cows. Excludes heifers not yet fresh.

² Excludes milk sucked by calves.

Milk Cows and Production – 24 Selected States: July 2022 and 2023

[May not add due to rounding]

State	Milk cows ¹		Milk per cow ²		Milk production ²		
	2022	2023	2022	2023	2022	2023	Change from 2022
	(1,000 head)	(1,000 head)	(pounds)	(pounds)	(million pounds)	(million pounds)	(percent)
Arizona	197	200	1,905	1,925	375	385	2.7
California	1,722	1,715	2,045	1,940	3,521	3,327	-5.5
Colorado	206	203	2,220	2,210	457	449	-1.8
Florida	96	92	1,605	1,660	154	153	-0.6
Georgia	93	93	1,800	1,860	167	173	3.6
Idaho	657	670	2,225	2,225	1,462	1,491	2.0
Illinois	80	79	1,780	1,800	142	142	-
Indiana	185	190	1,980	2,005	366	381	4.1
Iowa	236	240	2,080	2,090	491	502	2.2
Kansas	174	171	2,000	1,990	348	340	-2.3
Michigan	427	440	2,335	2,360	997	1,038	4.1
Minnesota	453	452	1,990	2,000	901	904	0.3
New Mexico	287	270	2,065	1,995	593	539	-9.1
New York	623	630	2,145	2,200	1,336	1,386	3.7
Ohio	249	253	1,875	1,900	467	481	3.0
Oregon	126	120	1,810	1,810	228	217	-4.8
Pennsylvania	467	466	1,790	1,780	836	829	-0.8
South Dakota	182	196	1,985	1,980	361	388	7.5
Texas	650	635	2,125	2,080	1,381	1,321	-4.3
Utah	95	93	2,000	1,995	190	186	-2.1
Vermont	117	117	1,845	1,840	216	215	-0.5
Virginia	69	68	1,690	1,740	117	118	0.9
Washington	257	258	2,070	2,055	532	530	-0.4
Wisconsin	1,272	1,269	2,150	2,175	2,735	2,760	0.9
24-State Total	8,920	8,920	2,060	2,047	18,373	18,255	-0.6

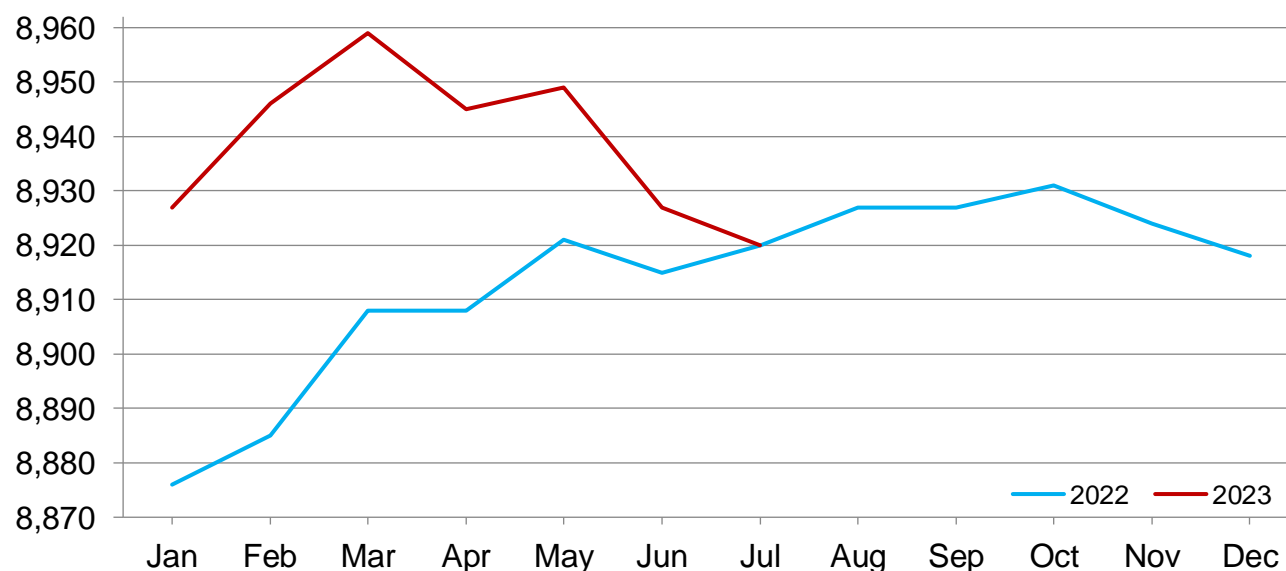
- Represents zero.

¹ Includes dry cows. Excludes heifers not yet fresh.

² Excludes milk sucked by calves.

Monthly Milk Cows - 24 Selected States

Thousand head



Milk Production (August 2023)

USDA, National Agricultural Statistics Service

Milk Cows and Production – 24 Selected States: June 2022 and 2023

[May not add due to rounding]

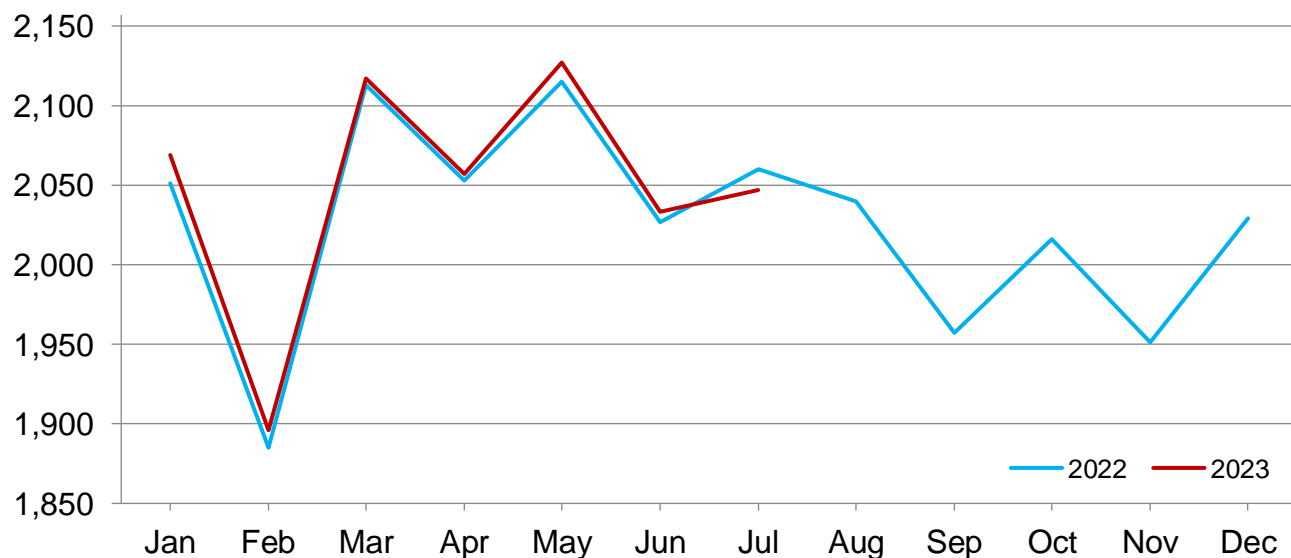
State	Milk cows ¹		Milk per cow ²		Milk production ²		
	2022	2023	2022	2023	2022	2023	Change from 2022
	(1,000 head)	(1,000 head)	(pounds)	(pounds)	(million pounds)	(million pounds)	(percent)
Arizona	198	200	2,010	2,030	398	406	2.0
California	1,722	1,717	2,015	1,995	3,470	3,425	-1.3
Colorado	207	204	2,155	2,145	446	438	-1.8
Florida	96	92	1,690	1,745	162	161	-0.6
Georgia	92	93	1,805	1,850	166	172	3.6
Idaho	655	670	2,145	2,145	1,405	1,437	2.3
Illinois	80	79	1,790	1,835	143	145	1.4
Indiana	185	189	2,000	2,010	370	380	2.7
Iowa	234	240	2,050	2,070	480	497	3.5
Kansas	174	175	1,970	1,955	343	342	-0.3
Michigan	427	438	2,280	2,310	974	1,012	3.9
Minnesota	450	452	1,935	1,940	871	877	0.7
New Mexico	289	275	2,050	2,000	592	550	-7.1
New York	623	630	2,105	2,155	1,311	1,358	3.6
Ohio	249	252	1,840	1,875	458	473	3.3
Oregon	126	120	1,770	1,760	223	211	-5.4
Pennsylvania	467	466	1,785	1,770	834	825	-1.1
South Dakota	180	195	1,930	1,925	347	375	8.1
Texas	648	635	2,115	2,095	1,371	1,330	-3.0
Utah	94	93	1,975	1,980	186	184	-1.1
Vermont	117	117	1,810	1,805	212	211	-0.5
Virginia	70	68	1,660	1,720	116	117	0.9
Washington	260	258	2,020	2,010	525	519	-1.1
Wisconsin	1,272	1,269	2,100	2,130	2,671	2,703	1.2
24-State Total	8,915	8,927	2,027	2,033	18,074	18,148	0.4

¹ Includes dry cows. Excludes heifers not yet fresh.

² Excludes milk sucked by calves.

Monthly Milk Per Cow - 24 Selected States

Pounds



Statistical Methodology

Survey Procedures: Primary data used to determine these estimates were obtained from a sample of producers. Individual States maintain a list of all known milk producers and information on the size of their herd. States use all known sources of producers to ensure that their lists are as complete as possible. Generally, all large producers and a sample of small producers are included in the survey. Questionnaires are mailed to producers near the end of the month to obtain data for the first day of the month. Additional reports are obtained by telephone, as needed, to supplement the mail response. Where feasible, States utilize state and federal administrative data to estimate milk production. This eliminates duplication of data gathering by different government agencies such as Agricultural Marketing Service (AMS) Dairy Market News. Indications of milk cow inventory are also obtained in the January Cattle Survey.

Estimation Procedures: Regional Field Offices prepare these estimates by using a combination of survey indications, historic trends, and any available administrative data. Individual State estimates are reviewed by the Agricultural Statistics Board for reasonableness.

Revision Policy: Milk production, milk per cow, and number of milk cows are subject to revision the following month after initial publication for monthly States or the following quarter for the quarterly States. Normally, administrative data from Federal Market Orders, State Departments of Agriculture, or other sources are the main basis for revisions. However, administrative data for all States may not be available in time for these revisions. Estimates are again subject to revisions in February each year based on additional administrative data. In the event that additional changes are necessary, a third revision is possible in February the following year. Estimates are again reviewed after data from the five-year Census of Agriculture are available. No revisions are made after that date.

Reliability: Since all operations with dairy animals are not included in the sample, survey estimates are subject to sampling variability. Survey results are also subject to non-sampling errors such as omissions, duplications, and mistakes in reporting, recording, and processing the data. The effects of these errors cannot be measured directly. They are minimized through rigid quality controls in the data collection process and through a careful review of all reported data for consistency and reasonableness.

To assist users in evaluating the reliability of the estimates in this report, the "Root Mean Square Error" is shown for selected items in the table below. The "Root Mean Square Error" is a statistical measure based on past performance and is computed using the differences between first and final estimates. The "Root Mean Square Error" for the 24 State milk production estimates over the past 24 months is 0.2 percent. This means that chances are 2 out of 3 that the final estimate will not be above or below the current estimate of 18.3 billion pounds by more than 0.2 percent. Chances are 9 out of 10 that the difference will not exceed 0.4 percent.

Reliability of Monthly Milk Production Estimates

[Based on data for the past 24 months]

Item	Root mean square error	90 percent confidence level	Difference between first and latest estimate				
			Average	Smallest	Largest	Months	
						Below latest	Above latest
	(percent)	(percent)	(1,000)	(1,000)	(1,000)	(number)	(number)
Milk production	0.2	0.4	34	3	93	11	13
All Milk cows	0.1	0.2	6	0	29	10	11

Information Contacts

Listed below are the commodity specialists in the Livestock Branch of the National Agricultural Statistics Service to contact for additional information. E-mail inquiries may be sent to nass@usda.gov.

Travis Averill, Chief, Livestock Branch	(202) 692-0069
Scott Hollis, Head, Livestock Section	(202) 690-2424
Sherry Bertramsen – Livestock Slaughter	(202) 690-8632
Ryan Cowen – Cattle, Cattle on Feed	(202) 720-3040
Kim DaPra – Milk Production and Milk Cows	(512) 501-3266
Donnie Fike – Dairy Products	(202) 690-3347
Anthony Fischer – Hogs and Pigs	(202) 720-3106
Suzanne Richards – Sheep and Goats	(202) 720-4448

Access to NASS Reports

For your convenience, you may access NASS reports and products the following ways:

- All reports are available electronically, at no cost, on the NASS web site: www.nass.usda.gov.
- Both national and state specific reports are available via a free e-mail subscription. To set-up this free subscription, visit www.nass.usda.gov and click on “National” or “State” in upper right corner above “search” box to create an account and select the reports you would like to receive.
- Cornell’s Mann Library has launched a new website housing NASS’s and other agency’s archived reports. The new website, <https://usda.library.cornell.edu>. All email subscriptions containing reports will be sent from the new website, <https://usda.library.cornell.edu>. To continue receiving the reports via e-mail, you will have to go to the new website, create a new account and re-subscribe to the reports. If you need instructions to set up an account or subscribe, they are located at: <https://usda.library.cornell.edu/help>. You should whitelist notifications@usda-esmis.library.cornell.edu in your email client to avoid the emails going into spam/junk folders.

For more information on NASS surveys and reports, call the NASS Agricultural Statistics Hotline at (800) 727-9540, 7:30 a.m. to 4:00 p.m. ET, or e-mail: nass@usda.gov.

The U.S. Department of Agriculture (USDA) prohibits discrimination against its customers, employees, and applicants for employment on the basis of race, color, national origin, age, disability, sex, gender identity, religion, reprisal, and where applicable, political beliefs, marital status, familial or parental status, sexual orientation, or all or part of an individual's income is derived from any public assistance program, or protected genetic information in employment or in any program or activity conducted or funded by the Department. (Not all prohibited bases will apply to all programs and/or employment activities.)

If you wish to file a Civil Rights program complaint of discrimination, complete the [USDA Program Discrimination Complaint Form](#) (PDF), found online at www.ascr.usda.gov/filing-program-discrimination-complaint-usda-customer, or at any USDA office, or call (866) 632-9992 to request the form. You may also write a letter containing all of the information requested in the form. Send your completed complaint form or letter to us by mail at U.S. Department of Agriculture, Director, Office of Adjudication, 1400 Independence Avenue, S.W., Washington, D.C. 20250-9410, by fax (202) 690-7442 or email at program.intake@usda.gov.