



Released November 20, 2023, by the National Agricultural Statistics Service (NASS), Agricultural Statistics Board, United States Department of Agriculture (USDA).

## October Milk Production down 0.4 Percent

**Milk production** in the 24 major States during October totaled 17.9 billion pounds, down 0.4 percent from October 2022. September revised production, at 17.5 billion pounds, was up 0.1 percent from September 2022. The September revision represented an increase of 17 million pounds or less than 0.1 percent from last month's preliminary production estimate.

**Production per cow** in the 24 major States averaged 2,013 pounds for October, 3 pounds below October 2022.

**The number of milk cows** on farms in the 24 major States was 8.91 million head, 19,000 head less than October 2022, and 5,000 head less than September 2023.

## October Milk Production in the United States down 0.5 Percent

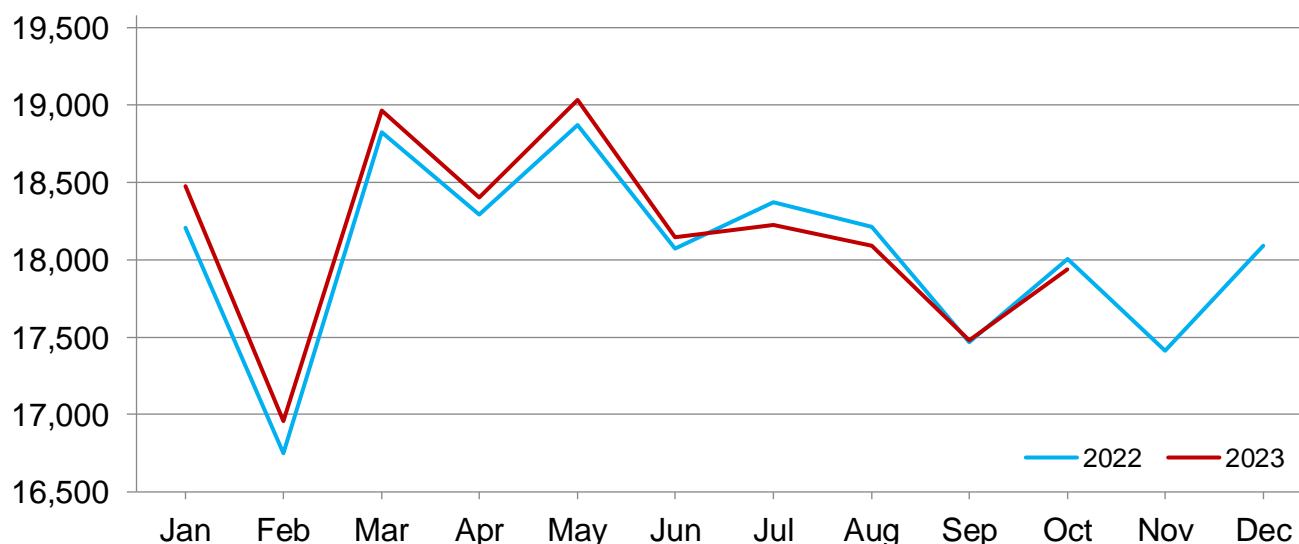
**Milk production** in the United States during October totaled 18.7 billion pounds, down 0.5 percent from October 2022.

**Production per cow** in the United States averaged 1,997 pounds for October, 1 pound below October 2022.

**The number of milk cows** on farms in the United States was 9.37 million head, 42,000 head less than October 2022, and 6,000 head less than September 2023.

## Monthly Milk Production - 24 Selected States

Million pounds



## Milk Cows and Production by Quarter – United States: 2022-2023

[May not add due to rounding. Blank data cells indicate estimation period has not yet begun]

| Quarter                | Milk cows <sup>1</sup> |              | Milk per cow <sup>2</sup> |          | Milk production <sup>2</sup> |                  |                  |
|------------------------|------------------------|--------------|---------------------------|----------|------------------------------|------------------|------------------|
|                        | 2022                   | 2023         | 2022                      | 2023     | 2022                         | 2023             | Change from 2022 |
|                        | (1,000 head)           | (1,000 head) | (pounds)                  | (pounds) | (million pounds)             | (million pounds) | (percent)        |
| January-March .....    | 9,384                  | 9,427        | 6,000                     | 6,031    | 56,305                       | 56,855           | 1.0              |
| April-June .....       | 9,411                  | 9,416        | 6,144                     | 6,165    | 57,822                       | 58,054           | 0.4              |
| July-September .....   | 9,408                  | 9,377        | 5,999                     | 5,981    | 56,438                       | 56,083           | -0.6             |
| October-December ..... | 9,404                  |              | 5,944                     |          | 55,897                       |                  |                  |
| Annual .....           | 9,402                  |              | 24,087                    |          | 226,462                      |                  |                  |

<sup>1</sup> Includes dry cows. Excludes heifers not yet fresh.

<sup>2</sup> Excludes milk sucked by calves.

## Milk Cows and Production by Month – 24 Selected States: 2022-2023

[May not add due to rounding. Blank data cells indicate estimation period has not yet begun]

| Month           | Milk cows <sup>1</sup> |              | Milk per cow <sup>2</sup> |          | Milk production <sup>2</sup> |                  |                  |
|-----------------|------------------------|--------------|---------------------------|----------|------------------------------|------------------|------------------|
|                 | 2022                   | 2023         | 2022                      | 2023     | 2022                         | 2023             | Change from 2022 |
|                 | (1,000 head)           | (1,000 head) | (pounds)                  | (pounds) | (million pounds)             | (million pounds) | (percent)        |
| January .....   | 8,876                  | 8,927        | 2,051                     | 2,069    | 18,205                       | 18,474           | 1.5              |
| February .....  | 8,885                  | 8,946        | 1,885                     | 1,896    | 16,750                       | 16,958           | 1.2              |
| March .....     | 8,908                  | 8,959        | 2,113                     | 2,117    | 18,827                       | 18,962           | 0.7              |
| April .....     | 8,908                  | 8,945        | 2,053                     | 2,057    | 18,291                       | 18,401           | 0.6              |
| May .....       | 8,921                  | 8,949        | 2,115                     | 2,127    | 18,871                       | 19,033           | 0.9              |
| June .....      | 8,915                  | 8,927        | 2,027                     | 2,033    | 18,074                       | 18,148           | 0.4              |
| July .....      | 8,920                  | 8,911        | 2,060                     | 2,046    | 18,373                       | 18,228           | -0.8             |
| August .....    | 8,927                  | 8,913        | 2,040                     | 2,030    | 18,212                       | 18,093           | -0.7             |
| September ..... | 8,927                  | 8,917        | 1,957                     | 1,961    | 17,470                       | 17,482           | 0.1              |
| October .....   | 8,931                  | 8,912        | 2,016                     | 2,013    | 18,005                       | 17,936           | -0.4             |
| November .....  | 8,924                  |              | 1,951                     |          | 17,413                       |                  |                  |
| December .....  | 8,918                  |              | 2,029                     |          | 18,093                       |                  |                  |
| Annual .....    | 8,913                  |              | 24,300                    |          | 216,584                      |                  |                  |

<sup>1</sup> Includes dry cows. Excludes heifers not yet fresh.

<sup>2</sup> Excludes milk sucked by calves.

## Estimated Milk Cows and Production by Month – United States: 2022-2023

[May not add due to rounding. Blank data cells indicate estimation period has not yet begun]

| Month           | Milk cows <sup>1</sup> |              | Milk per cow <sup>2</sup> |          | Milk production <sup>2</sup> |                  |                  |
|-----------------|------------------------|--------------|---------------------------|----------|------------------------------|------------------|------------------|
|                 | 2022                   | 2023         | 2022                      | 2023     | 2022                         | 2023             | Change from 2022 |
|                 | (1,000 head)           | (1,000 head) | (pounds)                  | (pounds) | (million pounds)             | (million pounds) | (percent)        |
| January .....   | 9,367                  | 9,408        | 2,034                     | 2,052    | 19,050                       | 19,308           | 1.4              |
| February .....  | 9,380                  | 9,429        | 1,870                     | 1,880    | 17,540                       | 17,724           | 1.0              |
| March .....     | 9,404                  | 9,444        | 2,096                     | 2,099    | 19,715                       | 19,823           | 0.5              |
| April .....     | 9,404                  | 9,425        | 2,036                     | 2,039    | 19,147                       | 19,217           | 0.4              |
| May .....       | 9,417                  | 9,425        | 2,098                     | 2,110    | 19,755                       | 19,884           | 0.7              |
| June .....      | 9,413                  | 9,399        | 2,010                     | 2,016    | 18,920                       | 18,953           | 0.2              |
| July .....      | 9,413                  | 9,379        | 2,038                     | 2,026    | 19,180                       | 19,000           | -0.9             |
| August .....    | 9,406                  | 9,376        | 2,022                     | 2,011    | 19,016                       | 18,856           | -0.8             |
| September ..... | 9,406                  | 9,376        | 1,939                     | 1,944    | 18,242                       | 18,227           | -0.1             |
| October .....   | 9,412                  | 9,370        | 1,998                     | 1,997    | 18,809                       | 18,710           | -0.5             |
| November .....  | 9,404                  |              | 1,934                     |          | 18,184                       |                  |                  |
| December .....  | 9,396                  |              | 2,012                     |          | 18,904                       |                  |                  |
| Annual .....    | 9,402                  |              | 24,087                    |          | 226,462                      |                  |                  |

<sup>1</sup> Includes dry cows. Excludes heifers not yet fresh.

<sup>2</sup> Excludes milk sucked by calves.

## Milk Cows and Production – 24 Selected States: October 2022 and 2023

[May not add due to rounding]

| State                | Milk cows <sup>1</sup> |              | Milk per cow <sup>2</sup> |          | Milk production <sup>2</sup> |                  |                  |
|----------------------|------------------------|--------------|---------------------------|----------|------------------------------|------------------|------------------|
|                      | 2022                   | 2023         | 2022                      | 2023     | 2022                         | 2023             | Change from 2022 |
|                      | (1,000 head)           | (1,000 head) | (pounds)                  | (pounds) | (million pounds)             | (million pounds) | (percent)        |
| Arizona .....        | 195                    | 201          | 1,935                     | 1,945    | 377                          | 391              | 3.7              |
| California .....     | 1,724                  | 1,714        | 1,975                     | 1,935    | 3,405                        | 3,317            | -2.6             |
| Colorado .....       | 205                    | 198          | 2,170                     | 2,170    | 445                          | 430              | -3.4             |
| Florida .....        | 94                     | 100          | 1,550                     | 1,550    | 146                          | 155              | 6.2              |
| Georgia .....        | 92                     | 94           | 1,810                     | 1,810    | 167                          | 170              | 1.8              |
| Idaho .....          | 662                    | 664          | 2,120                     | 2,085    | 1,403                        | 1,384            | -1.4             |
| Illinois .....       | 79                     | 79           | 1,735                     | 1,745    | 137                          | 138              | 0.7              |
| Indiana .....        | 186                    | 191          | 1,980                     | 1,975    | 368                          | 377              | 2.4              |
| Iowa .....           | 239                    | 240          | 2,065                     | 2,060    | 494                          | 494              | -                |
| Kansas .....         | 175                    | 173          | 2,015                     | 2,010    | 353                          | 348              | -1.4             |
| Michigan .....       | 428                    | 439          | 2,300                     | 2,300    | 984                          | 1,010            | 2.6              |
| Minnesota .....      | 453                    | 451          | 1,940                     | 1,955    | 879                          | 882              | 0.3              |
| New Mexico .....     | 284                    | 260          | 2,030                     | 2,020    | 577                          | 525              | -9.0             |
| New York .....       | 627                    | 630          | 2,105                     | 2,140    | 1,320                        | 1,348            | 2.1              |
| Ohio .....           | 250                    | 255          | 1,830                     | 1,845    | 458                          | 470              | 2.6              |
| Oregon .....         | 124                    | 120          | 1,755                     | 1,740    | 218                          | 209              | -4.1             |
| Pennsylvania .....   | 468                    | 466          | 1,730                     | 1,730    | 810                          | 806              | -0.5             |
| South Dakota .....   | 185                    | 198          | 1,955                     | 1,950    | 362                          | 386              | 6.6              |
| Texas .....          | 655                    | 635          | 2,150                     | 2,175    | 1,408                        | 1,381            | -1.9             |
| Utah .....           | 92                     | 92           | 1,930                     | 1,935    | 178                          | 178              | -                |
| Vermont .....        | 117                    | 116          | 1,810                     | 1,805    | 212                          | 209              | -1.4             |
| Virginia .....       | 69                     | 69           | 1,670                     | 1,715    | 115                          | 118              | 2.6              |
| Washington .....     | 257                    | 257          | 2,025                     | 2,015    | 520                          | 518              | -0.4             |
| Wisconsin .....      | 1,271                  | 1,270        | 2,100                     | 2,120    | 2,669                        | 2,692            | 0.9              |
| 24-State Total ..... | 8,931                  | 8,912        | 2,016                     | 2,013    | 18,005                       | 17,936           | -0.4             |

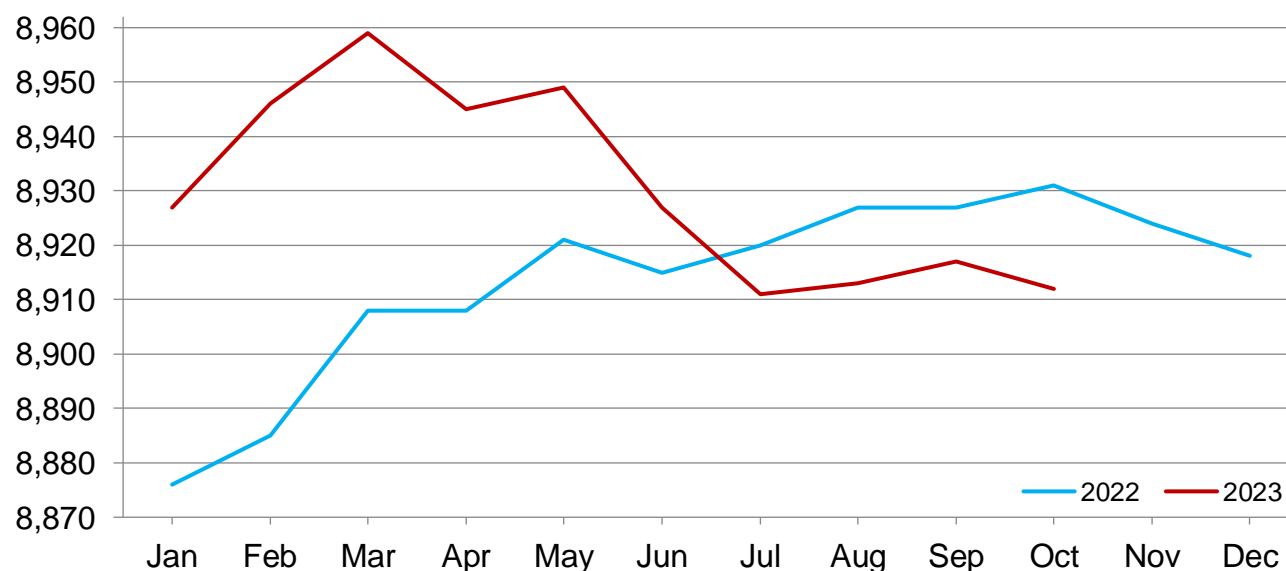
- Represents zero.

<sup>1</sup> Includes dry cows. Excludes heifers not yet fresh.

<sup>2</sup> Excludes milk sucked by calves.

## Monthly Milk Cows - 24 Selected States

Thousand head



## Milk Cows and Production – 24 Selected States: September 2022 and 2023

[May not add due to rounding]

| State                | Milk cows <sup>1</sup> |              | Milk per cow <sup>2</sup> |          | Milk production <sup>2</sup> |                  | Change from 2022 |
|----------------------|------------------------|--------------|---------------------------|----------|------------------------------|------------------|------------------|
|                      | 2022                   | 2023         | 2022                      | 2023     | 2022                         | 2023             |                  |
|                      | (1,000 head)           | (1,000 head) | (pounds)                  | (pounds) | (million pounds)             | (million pounds) | (percent)        |
| Arizona .....        | 195                    | 201          | 1,790                     | 1,835    | 349                          | 369              | 5.7              |
| California .....     | 1,723                  | 1,714        | 1,900                     | 1,875    | 3,274                        | 3,214            | -1.8             |
| Colorado .....       | 206                    | 198          | 2,130                     | 2,125    | 439                          | 421              | -4.1             |
| Florida .....        | 93                     | 100          | 1,430                     | 1,510    | 133                          | 151              | 13.5             |
| Georgia .....        | 92                     | 94           | 1,695                     | 1,745    | 156                          | 164              | 5.1              |
| Idaho .....          | 660                    | 665          | 2,105                     | 2,065    | 1,389                        | 1,373            | -1.2             |
| Illinois .....       | 80                     | 79           | 1,650                     | 1,705    | 132                          | 135              | 2.3              |
| Indiana .....        | 186                    | 191          | 1,900                     | 1,910    | 353                          | 365              | 3.4              |
| Iowa .....           | 238                    | 240          | 2,000                     | 2,010    | 476                          | 482              | 1.3              |
| Kansas .....         | 175                    | 172          | 1,955                     | 1,955    | 342                          | 336              | -1.8             |
| Michigan .....       | 428                    | 439          | 2,235                     | 2,240    | 957                          | 983              | 2.7              |
| Minnesota .....      | 453                    | 451          | 1,895                     | 1,905    | 858                          | 859              | 0.1              |
| New Mexico .....     | 284                    | 265          | 1,970                     | 1,960    | 559                          | 519              | -7.2             |
| New York .....       | 625                    | 630          | 2,055                     | 2,070    | 1,284                        | 1,304            | 1.6              |
| Ohio .....           | 250                    | 255          | 1,770                     | 1,795    | 443                          | 458              | 3.4              |
| Oregon .....         | 125                    | 120          | 1,710                     | 1,715    | 214                          | 206              | -3.7             |
| Pennsylvania .....   | 468                    | 466          | 1,680                     | 1,685    | 786                          | 785              | -0.1             |
| South Dakota .....   | 185                    | 198          | 1,920                     | 1,925    | 355                          | 381              | 7.3              |
| Texas .....          | 655                    | 635          | 2,050                     | 2,095    | 1,343                        | 1,330            | -1.0             |
| Utah .....           | 92                     | 92           | 1,905                     | 1,905    | 175                          | 175              | -                |
| Vermont .....        | 117                    | 116          | 1,770                     | 1,750    | 207                          | 203              | -1.9             |
| Virginia .....       | 69                     | 69           | 1,615                     | 1,650    | 111                          | 114              | 2.7              |
| Washington .....     | 257                    | 257          | 2,010                     | 1,995    | 517                          | 513              | -0.8             |
| Wisconsin .....      | 1,271                  | 1,270        | 2,060                     | 2,080    | 2,618                        | 2,642            | 0.9              |
| 24-State Total ..... | 8,927                  | 8,917        | 1,957                     | 1,961    | 17,470                       | 17,482           | 0.1              |

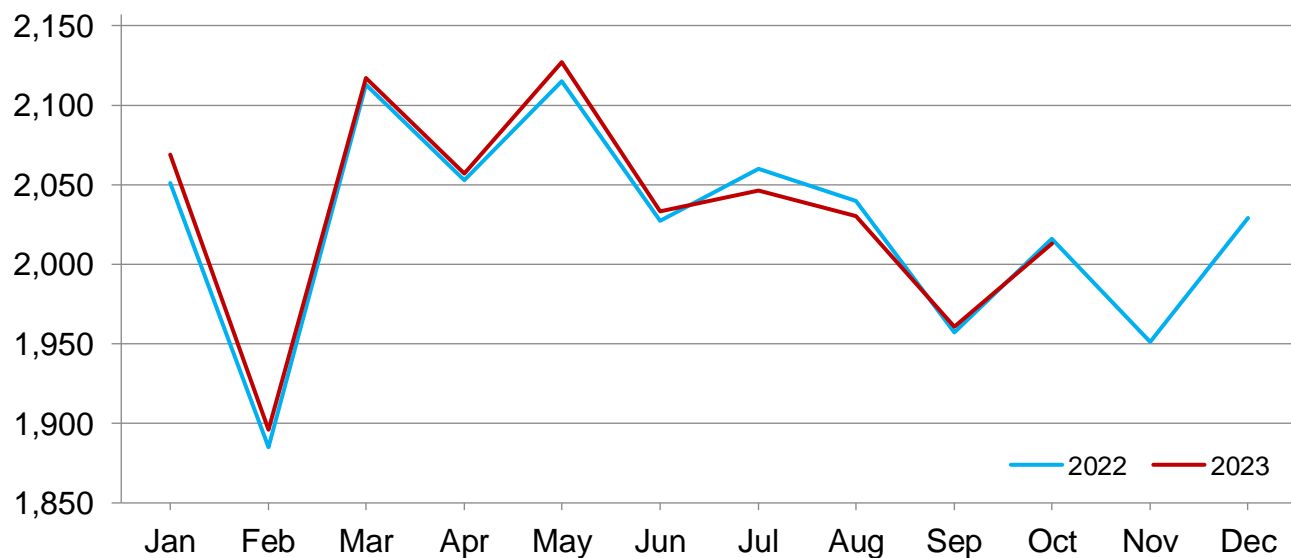
- Represents zero.

<sup>1</sup> Includes dry cows. Excludes heifers not yet fresh.

<sup>2</sup> Excludes milk sucked by calves.

## Monthly Milk Per Cow - 24 Selected States

Pounds



## Statistical Methodology

**Survey Procedures:** Primary data used to determine these estimates were obtained from a sample of producers. Individual States maintain a list of all known milk producers and information on the size of their herd. States use all known sources of producers to ensure that their lists are as complete as possible. Generally, all large producers and a sample of small producers are included in the survey. Questionnaires are mailed to producers near the end of the month to obtain data for the first day of the month. Additional reports are obtained by telephone, as needed, to supplement the mail response. Where feasible, States utilize state and federal administrative data to estimate milk production. This eliminates duplication of data gathering by different government agencies such as Agricultural Marketing Service (AMS) Dairy Market News. Indications of milk cow inventory are also obtained in the January Cattle Survey.

**Estimation Procedures:** Regional Field Offices prepare these estimates by using a combination of survey indications, historic trends, and any available administrative data. Individual State estimates are reviewed by the Agricultural Statistics Board for reasonableness.

**Revision Policy:** Milk production, milk per cow, and number of milk cows are subject to revision the following month after initial publication for monthly States or the following quarter for the quarterly States. Normally, administrative data from Federal Market Orders, State Departments of Agriculture, or other sources are the main basis for revisions. However, administrative data for all States may not be available in time for these revisions. Estimates are again subject to revisions in February each year based on additional administrative data. In the event that additional changes are necessary, a third revision is possible in February the following year. Estimates are again reviewed after data from the five-year Census of Agriculture are available. No revisions are made after that date.

**Reliability:** Since all operations with dairy animals are not included in the sample, survey estimates are subject to sampling variability. Survey results are also subject to non-sampling errors such as omissions, duplications, and mistakes in reporting, recording, and processing the data. The effects of these errors cannot be measured directly. They are minimized through rigid quality controls in the data collection process and through a careful review of all reported data for consistency and reasonableness.

To assist users in evaluating the reliability of the estimates in this report, the "Root Mean Square Error" is shown for selected items in the table below. The "Root Mean Square Error" is a statistical measure based on past performance and is computed using the differences between first and final estimates. The "Root Mean Square Error" for the 24 State milk production estimates over the past 24 months is 0.2 percent. This means that chances are 2 out of 3 that the final estimate will not be above or below the current estimate of 17.9 billion pounds by more than 0.2 percent. Chances are 9 out of 10 that the difference will not exceed 0.4 percent.

### Reliability of Monthly Milk Production Estimates

[Based on data for the past 24 months]

| Item                  | Root mean square error | 90 percent confidence level | Difference between first and latest estimate |          |         |              |              |
|-----------------------|------------------------|-----------------------------|--|----------|---------|--------------|--------------|
|                       |                        |                             | Average                                      | Smallest | Largest | Months       |              |
|                       |                        |                             |  |          |         | Below latest | Above latest |
|                       | (percent)              | (percent)                   | (1,000)                                      | (1,000)  | (1,000) | (number)     | (number)     |
| Milk production ..... | 0.2                    | 0.4                         | 34   | 3        | 93      | 11           | 13           |
| All Milk cows .....   | 0.1                    | 0.1                         | 5  | 0        | 15      | 10           | 10           |

Information Contacts

Listed below are the commodity specialists in the Livestock Branch of the National Agricultural Statistics Service to contact for additional information. E-mail inquiries may be sent to [nass@usda.gov](mailto:nass@usda.gov).

|   |                |
|---|----------------|
| Travis Averill, Chief, Livestock Branch .....   | (202) 692-0069 |
| Scott Hollis, Head, Livestock Section .....     | (202) 690-2424 |
| Sherry Bertramsen – Livestock Slaughter .....   | (202) 690-8632 |
| Ryan Cowen – Cattle, Cattle on Feed .....       | (202) 720-3040 |
| Kim DaPra – Milk Production and Milk Cows ..... | (512) 501-3266 |
| Donnie Fike – Dairy Products .....              | (202) 690-3347 |
| Anthony Fischer – Hogs and Pigs .....           | (202) 720-3106 |
| Suzanne Richards – Sheep and Goats .....        | (202) 720-4448 |

Access to NASS Reports

For your convenience, you may access NASS reports and products the following ways:

- All reports are available electronically, at no cost, on the NASS web site: [www.nass.usda.gov](http://www.nass.usda.gov).
- Both national and state specific reports are available via a free e-mail subscription. To set-up this free subscription, visit [www.nass.usda.gov](http://www.nass.usda.gov) and click on “National” or “State” in upper right corner above “search” box to create an account and select the reports you would like to receive.
- Cornell’s Mann Library has launched a new website housing NASS’s and other agency’s archived reports. The new website, <https://usda.library.cornell.edu>. All email subscriptions containing reports will be sent from the new website, <https://usda.library.cornell.edu>. To continue receiving the reports via e-mail, you will have to go to the new website, create a new account and re-subscribe to the reports. If you need instructions to set up an account or subscribe, they are located at: <https://usda.library.cornell.edu/help>. You should whitelist [notifications@usda-esmis.library.cornell.edu](mailto:notifications@usda-esmis.library.cornell.edu) in your email client to avoid the emails going into spam/junk folders.

For more information on NASS surveys and reports, call the NASS Agricultural Statistics Hotline at (800) 727-9540, 7:30 a.m. to 4:00 p.m. ET, or e-mail: [nass@usda.gov](mailto:nass@usda.gov).

The U.S. Department of Agriculture (USDA) prohibits discrimination against its customers, employees, and applicants for employment on the basis of race, color, national origin, age, disability, sex, gender identity, religion, reprisal, and where applicable, political beliefs, marital status, familial or parental status, sexual orientation, or all or part of an individual's income is derived from any public assistance program, or protected genetic information in employment or in any program or activity conducted or funded by the Department. (Not all prohibited bases will apply to all programs and/or employment activities.)

If you wish to file a Civil Rights program complaint of discrimination, complete the [USDA Program Discrimination Complaint Form](#) (PDF), found online at [www.ascr.usda.gov/filing-program-discrimination-complaint-usda-customer](http://www.ascr.usda.gov/filing-program-discrimination-complaint-usda-customer), or at any USDA office, or call (866) 632-9992 to request the form. You may also write a letter containing all of the information requested in the form. Send your completed complaint form or letter to us by mail at U.S. Department of Agriculture, Director, Office of Adjudication, 1400 Independence Avenue, S.W., Washington, D.C. 20250-9410, by fax (202) 690-7442 or email at [program.intake@usda.gov](mailto:program.intake@usda.gov).