



Released September 18, 2023, by the National Agricultural Statistics Service (NASS), Agricultural Statistics Board, United States Department of Agriculture (USDA).

August Milk Production down 0.3 Percent

Milk production in the 24 major States during August totaled 18.2 billion pounds, down 0.3 percent from August 2022. July revised production, at 18.2 billion pounds, was down 0.8 percent from July 2022. The July revision represented a decrease of 27 million pounds or 0.1 percent from last month's preliminary production estimate.

Production per cow in the 24 major States averaged 2,038 pounds for August, 2 pounds below August 2022.

The number of milk cows on farms in the 24 major States was 8.91 million head, 15,000 head less than August 2022, but 1,000 head more than July 2023.

August Milk Production in the United States down 0.2 Percent

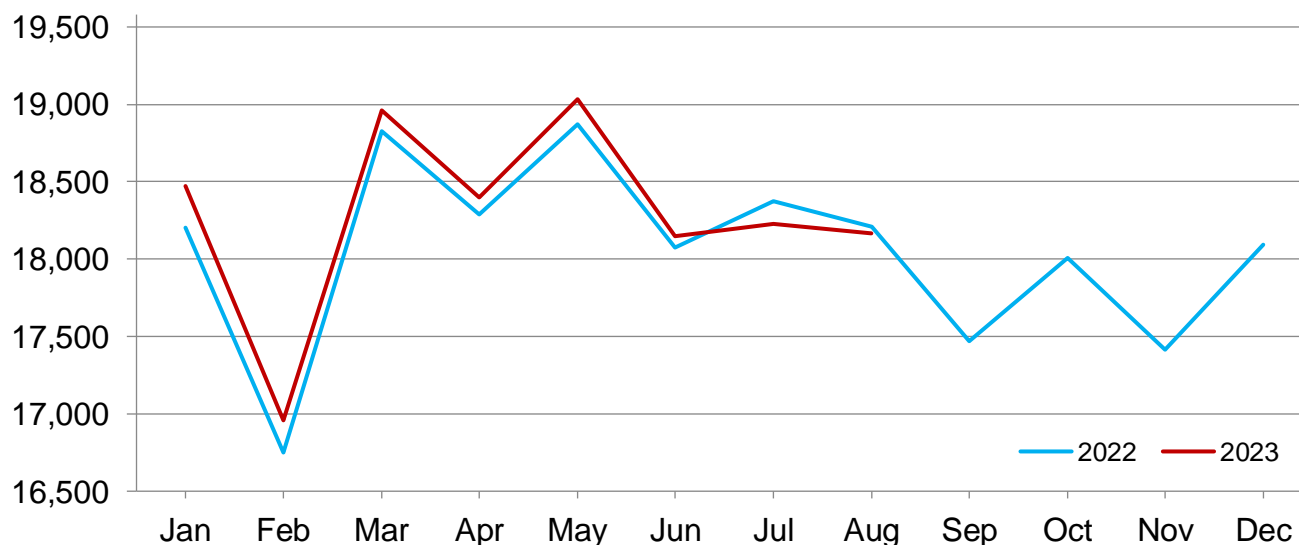
Milk production in the United States during August totaled 19.0 billion pounds, down 0.2 percent from August 2022.

Production per cow in the United States averaged 2,021 pounds for August, 1 pound below August 2022.

The number of milk cows on farms in the United States was 9.39 million head, 16,000 head less than August 2022, but no change from July 2023.

Monthly Milk Production - 24 Selected States

Million pounds



Milk Cows and Production by Quarter – United States: 2022-2023

[May not add due to rounding. Blank data cells indicate estimation period has not yet begun]

Quarter	Milk cows ¹		Milk per cow ²		Milk production ²		
	2022	2023	2022	2023	2022	2023	Change from 2022
	(1,000 head)	(1,000 head)	(pounds)	(pounds)	(million pounds)	(million pounds)	(percent)
January-March	9,384	9,427	6,000	6,031	56,305	56,855	1.0
April-June	9,411	9,417	6,144	6,165	57,822	58,056	0.4
July-September	9,408		5,999		56,438		
October-December	9,404		5,944		55,897		
Annual	9,402		24,087		226,462		

¹ Includes dry cows. Excludes heifers not yet fresh.

² Excludes milk sucked by calves.

Milk Cows and Production by Month – 24 Selected States: 2022-2023

[May not add due to rounding. Blank data cells indicate estimation period has not yet begun]

Month	Milk cows ¹		Milk per cow ²		Milk production ²		
	2022	2023	2022	2023	2022	2023	Change from 2022
	(1,000 head)	(1,000 head)	(pounds)	(pounds)	(million pounds)	(million pounds)	(percent)
January	8,876	8,927	2,051	2,069	18,205	18,474	1.5
February	8,885	8,946	1,885	1,896	16,750	16,958	1.2
March	8,908	8,959	2,113	2,117	18,827	18,962	0.7
April	8,908	8,945	2,053	2,057	18,291	18,401	0.6
May	8,921	8,949	2,115	2,127	18,871	19,033	0.9
June	8,915	8,927	2,027	2,033	18,074	18,148	0.4
July	8,920	8,911	2,060	2,046	18,373	18,228	-0.8
August	8,927	8,912	2,040	2,038	18,212	18,166	-0.3
September	8,927		1,957		17,470		
October	8,931		2,016		18,005		
November	8,924		1,951		17,413		
December	8,918		2,029		18,093		
Annual	8,913		24,300		216,584		

¹ Includes dry cows. Excludes heifers not yet fresh.

² Excludes milk sucked by calves.

Estimated Milk Cows and Production by Month – United States: 2022-2023

[May not add due to rounding. Blank data cells indicate estimation period has not yet begun]

Month	Milk cows ¹		Milk per cow ²		Milk production ²		
	2022	2023	2022	2023	2022	2023	Change from 2022
	(1,000 head)	(1,000 head)	(pounds)	(pounds)	(million pounds)	(million pounds)	(percent)
January	9,367	9,408	2,034	2,052	19,050	19,308	1.4
February	9,380	9,429	1,870	1,880	17,540	17,724	1.0
March	9,404	9,444	2,096	2,099	19,715	19,823	0.5
April	9,404	9,425	2,036	2,039	19,147	19,219	0.4
May	9,417	9,424	2,098	2,110	19,755	19,884	0.7
June	9,413	9,403	2,010	2,016	18,920	18,953	0.2
July	9,413	9,390	2,038	2,028	19,180	19,040	-0.7
August	9,406	9,390	2,022	2,021	19,016	18,975	-0.2
September	9,406		1,939		18,242		
October	9,412		1,998		18,809		
November	9,404		1,934		18,184		
December	9,396		2,012		18,904		
Annual	9,402		24,087		226,462		

¹ Includes dry cows. Excludes heifers not yet fresh.

² Excludes milk sucked by calves.

Milk Cows and Production – 24 Selected States: August 2022 and 2023

[May not add due to rounding]

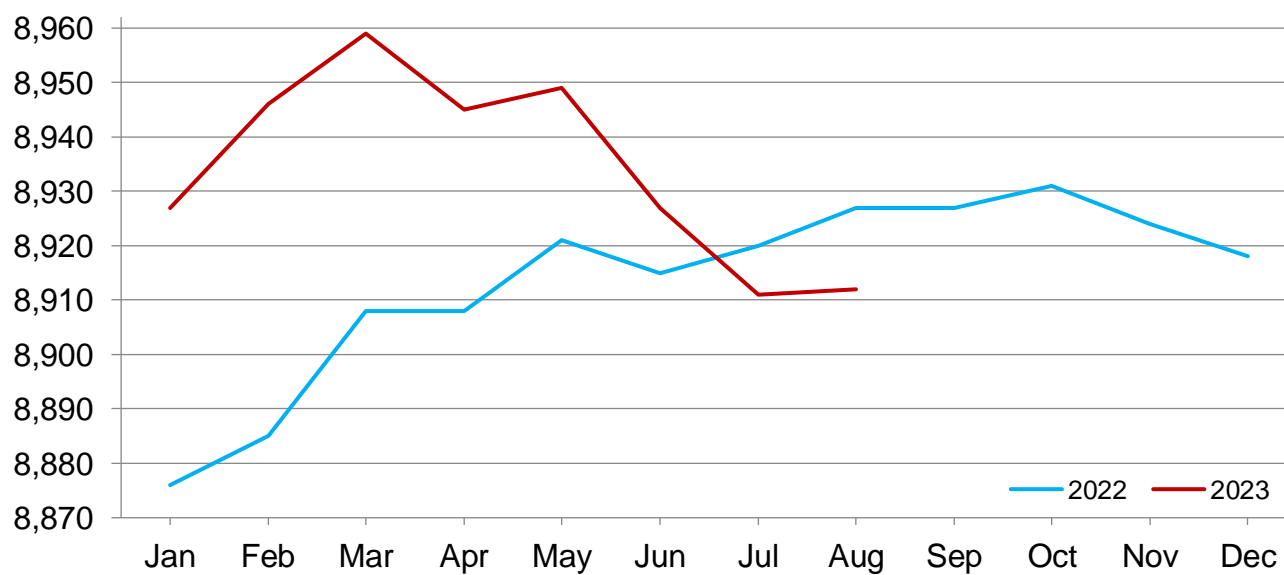
State	Milk cows ¹		Milk per cow ²		Milk production ²		
	2022	2023	2022	2023	2022	2023	Change from 2022
	(1,000 head)	(1,000 head)	(pounds)	(pounds)	(million pounds)	(million pounds)	(percent)
Arizona	196	198	1,840	1,830	361	362	0.3
California	1,723	1,714	2,010	1,945	3,463	3,334	-3.7
Colorado	206	200	2,215	2,200	456	440	-3.5
Florida	95	94	1,545	1,575	147	148	0.7
Georgia	93	93	1,750	1,805	163	168	3.1
Idaho	657	668	2,205	2,190	1,449	1,463	1.0
Illinois	80	79	1,730	1,755	138	139	0.7
Indiana	186	190	1,950	1,970	363	374	3.0
Iowa	238	243	2,070	2,095	493	509	3.2
Kansas	174	167	2,000	1,995	348	333	-4.3
Michigan	427	440	2,325	2,340	993	1,030	3.7
Minnesota	453	451	1,985	1,980	899	893	-0.7
New Mexico	287	270	2,050	2,005	588	541	-8.0
New York	624	630	2,130	2,190	1,329	1,380	3.8
Ohio	250	253	1,860	1,890	465	478	2.8
Oregon	124	120	1,775	1,775	220	213	-3.2
Pennsylvania	468	466	1,755	1,770	821	825	0.5
South Dakota	185	197	1,990	1,980	368	390	6.0
Texas	655	635	2,115	2,110	1,385	1,340	-3.2
Utah	93	93	1,995	1,990	186	185	-0.5
Vermont	117	117	1,830	1,845	214	216	0.9
Virginia	69	68	1,675	1,730	116	118	1.7
Washington	255	257	2,035	2,050	519	527	1.5
Wisconsin	1,272	1,269	2,145	2,175	2,728	2,760	1.2
24-State Total	8,927	8,912	2,040	2,038	18,212	18,166	-0.3

¹ Includes dry cows. Excludes heifers not yet fresh.

² Excludes milk sucked by calves.

Monthly Milk Cows - 24 Selected States

Thousand head



Milk Cows and Production – 24 Selected States: July 2022 and 2023

[May not add due to rounding]

State	Milk cows ¹		Milk per cow ²		Milk production ²		Change from 2022
	2022	2023	2022	2023	2022	2023	
	(1,000 head)	(1,000 head)	(pounds)	(pounds)	(million pounds)	(million pounds)	(percent)
Arizona	197	198	1,905	1,910	375	378	0.8
California	1,722	1,715	2,045	1,940	3,521	3,327	-5.5
Colorado	206	200	2,220	2,205	457	441	-3.5
Florida	96	94	1,605	1,650	154	155	0.6
Georgia	93	93	1,800	1,840	167	171	2.4
Idaho	657	666	2,225	2,195	1,462	1,462	-
Illinois	80	79	1,780	1,810	142	143	0.7
Indiana	185	190	1,980	2,005	366	381	4.1
Iowa	236	242	2,080	2,100	491	508	3.5
Kansas	174	169	2,000	1,985	348	335	-3.7
Michigan	427	439	2,335	2,360	997	1,036	3.9
Minnesota	453	451	1,990	1,990	901	897	-0.4
New Mexico	287	270	2,065	1,995	593	539	-9.1
New York	623	630	2,145	2,200	1,336	1,386	3.7
Ohio	249	253	1,875	1,900	467	481	3.0
Oregon	126	120	1,810	1,800	228	216	-5.3
Pennsylvania	467	466	1,790	1,780	836	829	-0.8
South Dakota	182	197	1,985	1,985	361	391	8.3
Texas	650	635	2,125	2,110	1,381	1,340	-3.0
Utah	95	93	2,000	1,995	190	186	-2.1
Vermont	117	117	1,845	1,840	216	215	-0.5
Virginia	69	68	1,690	1,740	117	118	0.9
Washington	257	257	2,070	2,050	532	527	-0.9
Wisconsin	1,272	1,269	2,150	2,180	2,735	2,766	1.1
24-State Total	8,920	8,911	2,060	2,046	18,373	18,228	-0.8

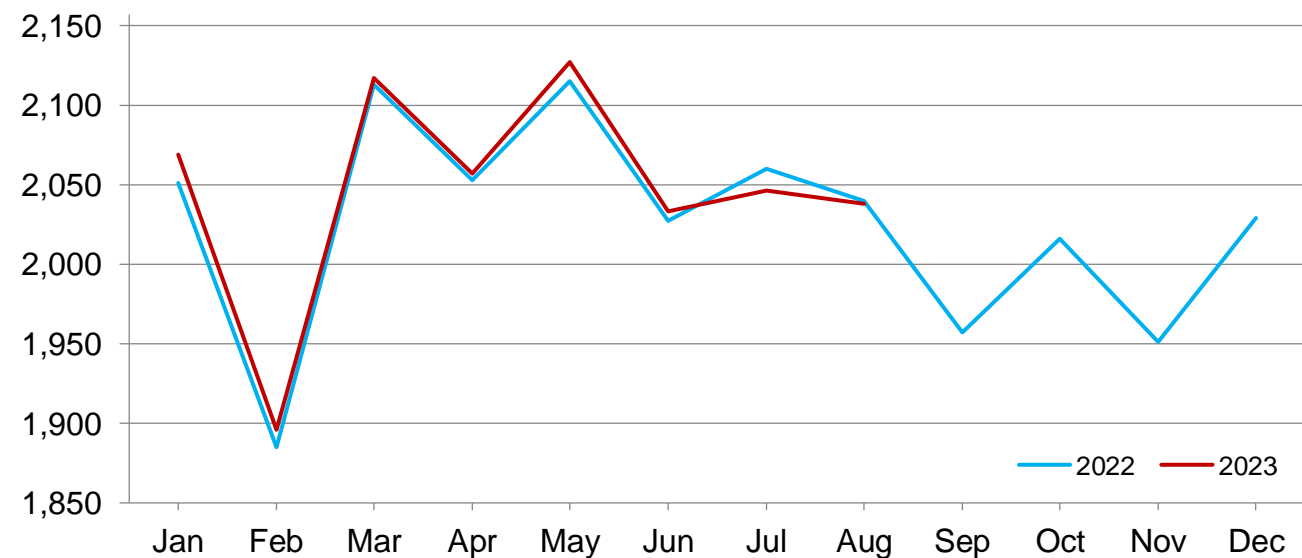
- Represents zero.

¹ Includes dry cows. Excludes heifers not yet fresh.

² Excludes milk sucked by calves.

Monthly Milk Per Cow - 24 Selected States

Pounds



Statistical Methodology

Survey Procedures: Primary data used to determine these estimates were obtained from a sample of producers. Individual States maintain a list of all known milk producers and information on the size of their herd. States use all known sources of producers to ensure that their lists are as complete as possible. Generally, all large producers and a sample of small producers are included in the survey. Questionnaires are mailed to producers near the end of the month to obtain data for the first day of the month. Additional reports are obtained by telephone, as needed, to supplement the mail response. Where feasible, States utilize state and federal administrative data to estimate milk production. This eliminates duplication of data gathering by different government agencies such as Agricultural Marketing Service (AMS) Dairy Market News. Indications of milk cow inventory are also obtained in the January Cattle Survey.

Estimation Procedures: Regional Field Offices prepare these estimates by using a combination of survey indications, historic trends, and any available administrative data. Individual State estimates are reviewed by the Agricultural Statistics Board for reasonableness.

Revision Policy: Milk production, milk per cow, and number of milk cows are subject to revision the following month after initial publication for monthly States or the following quarter for the quarterly States. Normally, administrative data from Federal Market Orders, State Departments of Agriculture, or other sources are the main basis for revisions. However, administrative data for all States may not be available in time for these revisions. Estimates are again subject to revisions in February each year based on additional administrative data. In the event that additional changes are necessary, a third revision is possible in February the following year. Estimates are again reviewed after data from the five-year Census of Agriculture are available. No revisions are made after that date.

Reliability: Since all operations with dairy animals are not included in the sample, survey estimates are subject to sampling variability. Survey results are also subject to non-sampling errors such as omissions, duplications, and mistakes in reporting, recording, and processing the data. The effects of these errors cannot be measured directly. They are minimized through rigid quality controls in the data collection process and through a careful review of all reported data for consistency and reasonableness.

To assist users in evaluating the reliability of the estimates in this report, the "Root Mean Square Error" is shown for selected items in the table below. The "Root Mean Square Error" is a statistical measure based on past performance and is computed using the differences between first and final estimates. The "Root Mean Square Error" for the 24 State milk production estimates over the past 24 months is 0.2 percent. This means that chances are 2 out of 3 that the final estimate will not be above or below the current estimate of 18.2 billion pounds by more than 0.2 percent. Chances are 9 out of 10 that the difference will not exceed 0.4 percent.

Reliability of Monthly Milk Production Estimates

[Based on data for the past 24 months]

Item	Root mean square error	90 percent confidence level	Difference between first and latest estimate				
			Average	Smallest	Largest	Months	
						Below latest	Above latest
	(percent)	(percent)	(1,000)	(1,000)	(1,000)	(number)	(number)
Milk production	0.2	0.4	35	3	93	11	13
All Milk cows	0.1	0.2	6	0	29	10	11

Information Contacts

Listed below are the commodity specialists in the Livestock Branch of the National Agricultural Statistics Service to contact for additional information. E-mail inquiries may be sent to nass@usda.gov.

Travis Averill, Chief, Livestock Branch	(202) 692-0069
Scott Hollis, Head, Livestock Section	(202) 690-2424
Sherry Bertramsen – Livestock Slaughter	(202) 690-8632
Ryan Cowen – Cattle, Cattle on Feed	(202) 720-3040
Kim DaPra – Milk Production and Milk Cows	(512) 501-3266
Donnie Fike – Dairy Products	(202) 690-3347
Anthony Fischer – Hogs and Pigs	(202) 720-3106
Suzanne Richards – Sheep and Goats	(202) 720-4448

Access to NASS Reports

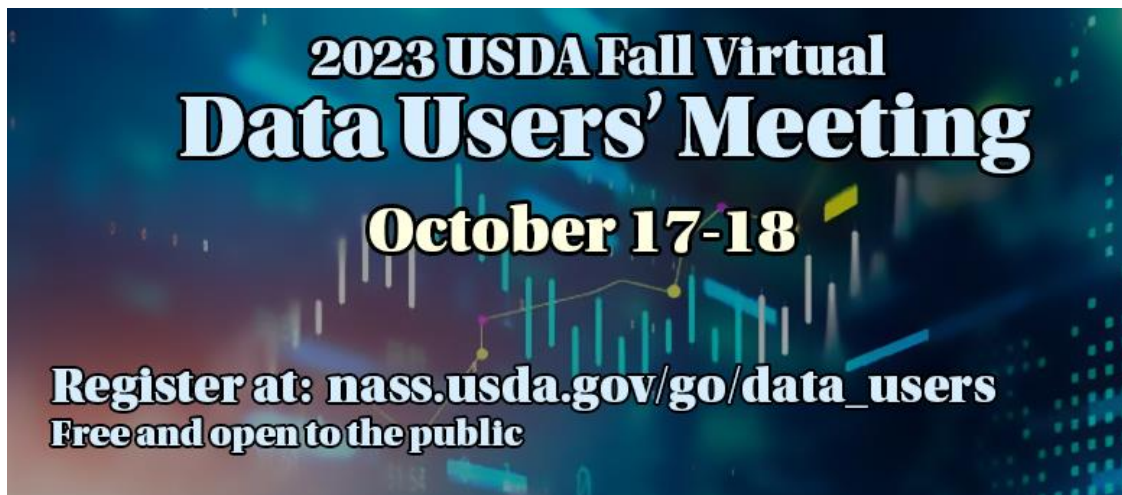
For your convenience, you may access NASS reports and products the following ways:

- All reports are available electronically, at no cost, on the NASS web site: www.nass.usda.gov.
- Both national and state specific reports are available via a free e-mail subscription. To set-up this free subscription, visit www.nass.usda.gov and click on “National” or “State” in upper right corner above “search” box to create an account and select the reports you would like to receive.
- Cornell’s Mann Library has launched a new website housing NASS’s and other agency’s archived reports. The new website, <https://usda.library.cornell.edu>. All email subscriptions containing reports will be sent from the new website, <https://usda.library.cornell.edu>. To continue receiving the reports via e-mail, you will have to go to the new website, create a new account and re-subscribe to the reports. If you need instructions to set up an account or subscribe, they are located at: <https://usda.library.cornell.edu/help>. You should whitelist notifications@usda-esmis.library.cornell.edu in your email client to avoid the emails going into spam/junk folders.

For more information on NASS surveys and reports, call the NASS Agricultural Statistics Hotline at (800) 727-9540, 7:30 a.m. to 4:00 p.m. ET, or e-mail: nass@usda.gov.

The U.S. Department of Agriculture (USDA) prohibits discrimination against its customers, employees, and applicants for employment on the basis of race, color, national origin, age, disability, sex, gender identity, religion, reprisal, and where applicable, political beliefs, marital status, familial or parental status, sexual orientation, or all or part of an individual's income is derived from any public assistance program, or protected genetic information in employment or in any program or activity conducted or funded by the Department. (Not all prohibited bases will apply to all programs and/or employment activities.)

If you wish to file a Civil Rights program complaint of discrimination, complete the [USDA Program Discrimination Complaint Form](#) (PDF), found online at www.ascr.usda.gov/filing-program-discrimination-complaint-usda-customer, or at any USDA office, or call (866) 632-9992 to request the form. You may also write a letter containing all of the information requested in the form. Send your completed complaint form or letter to us by mail at U.S. Department of Agriculture, Director, Office of Adjudication, 1400 Independence Avenue, S.W., Washington, D.C. 20250-9410, by fax (202) 690-7442 or email at program.intake@usda.gov.



USDA Fall Data Users' Meeting
Virtual Meeting
October 17 & 18, 2023
12:00 – 3:00 pm ET

USDA's National Agricultural Statistics Service (NASS) will hold a virtual meeting for users of U.S. domestic and international agriculture data. NASS is organizing the 2023 Fall Data Users' Meeting in cooperation with five other USDA agencies – Agricultural Marketing Service, Economic Research Service, Farm Service Agency, Foreign Agricultural Service, and World Agricultural Outlook Board – and the Census Bureau's Foreign Trade Division. Representatives will provide agency updates, answer questions, and listen to concerns from data users.

Abbreviated Agenda

Day 1 – October 17

Agency Updates– *All agencies*

Focus on the 2022 Census of Agriculture - *National Agricultural Statistics Service*

The Use of Weather Information In Producing the WASDE - *World Agricultural Outlook Board*

NASS Historical Revisions and Estimating Program Review - *National Agricultural Statistics Service*

AMS Data Visualizations - *Agricultural Marketing Service*

Day 2 – October 18

Open Forum – *All agencies*

ERS Feed Grains Database: A comprehensive look at this valuable resource – *Economic Research Service*

Understanding Publicly Available Data from USDA-Risk Management Agency – *Risk Management Agency*

For registration details or additional information about the Data Users' Meeting, see the meeting page on the NASS website (https://www.nass.usda.gov/go/data_users).