



# Egg Products

ISSN: 1949-0402

Released February 26, 2020, by the National Agricultural Statistics Service (NASS), Agricultural Statistics Board, United States Department of Agriculture (USDA).

## Shell Eggs Broken up 6 percent from Last Year

**January 2019** contained 23 weekdays (including 1 holiday) and 4 Saturdays.

**January 2020** contained 23 weekdays (including 1 holiday) and 4 Saturdays.

Shell eggs broken totaled 224 million dozen during January 2020, up 6 percent from January a year ago, and 5 percent above the 213 million dozen broken during the previous month.

During calendar year 2019, shell eggs broken totaled 2.49 billion dozen, up 4 percent from the comparable period in 2018.

Data presented in this report were compiled from Food Safety and Inspection Service (FSIS) inspection reports. The best available data at the time of publication were used.

## Federally Inspected Shell Eggs Broken – United States: January 2020 with Comparisons

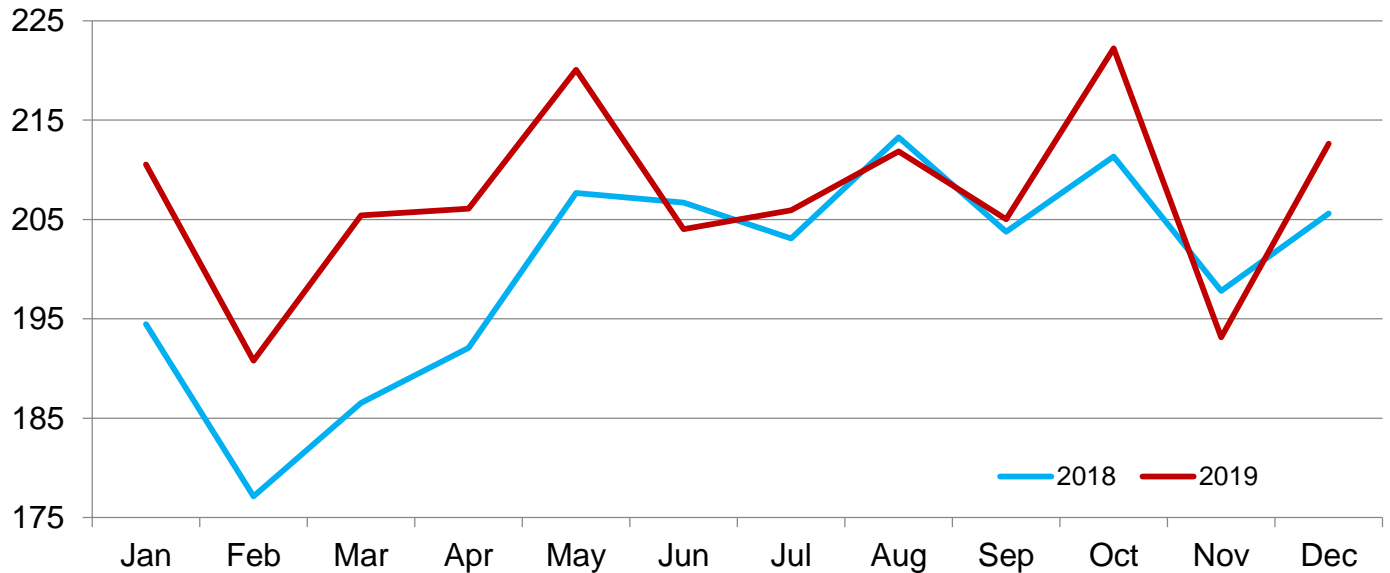
Inspected item	January 2019	December 2019	January 2020	Percent of	
				January 2019	December 2019
	(1,000 dozen)	(1,000 dozen)	(1,000 dozen)	(percent)	(percent)
<b>Shell eggs broken</b> .....	210,527	212,624	223,910	106	105
	(1,000 pounds)	(1,000 pounds)	(1,000 pounds)	(percent)	(percent)
<b>Edible product from shell eggs broken</b>					
Whole .....	166,895	166,827	179,992	108	108
White .....	68,228	70,913	74,946	110	106
Yolk .....	34,541	34,764	38,519	112	111
Total .....	269,664	272,504	293,457	109	108
<b>Inedible product from shell eggs broken</b> .....	22,666	21,956	23,399	103	107

## Federally Inspected Shell Eggs Broken by Month – United States: 2018-2019

Month	Monthly			Cumulative		
	2018	2019	2019 as percent of 2018	2018	2019	2019 as percent of 2018
	(1,000 dozen)	(1,000 dozen)	(percent)	(1,000 dozen)	(1,000 dozen)	(percent)
January .....	194,454	210,527	108	194,454	210,527	108
February .....	177,111	190,800	108	371,565	401,327	108
March .....	186,544	205,414	110	558,109	606,741	109
April .....	192,075	206,100	107	750,184	812,841	108
May .....	207,660	220,062	106	957,844	1,032,903	108
June .....	206,715	204,019	99	1,164,559	1,236,922	106
July .....	203,097	205,938	101	1,367,656	1,442,860	105
August .....	213,290	211,862	99	1,580,946	1,654,722	105
September .....	203,777	205,019	101	1,784,723	1,859,741	104
October .....	211,344	222,239	105	1,996,067	2,081,980	104
November .....	197,801	193,139	98	2,193,868	2,275,119	104
December .....	205,614	212,624	103	2,399,482	2,487,743	104

## Shell Eggs Broken – United States

Million dozen



## Federally Inspected Egg Products by Item and Month – United States: 2018-2019

Item and month	Monthly			Cumulative		
	2018	2019	2019 as percent of 2018	2018	2019	2019 as percent of 2018
	(1,000 pounds)	(1,000 pounds)	(percent)	(1,000 pounds)	(1,000 pounds)	(percent)
<b>Whole edible product</b>						
January .....	157,592	166,895	106	157,592	166,895	106
February .....	140,427	153,318	109	298,019	320,213	107
March .....	153,358	163,921	107	451,377	484,134	107
April .....	156,954	158,519	101	608,331	642,653	106
May .....	167,886	168,975	101	776,217	811,628	105
June .....	160,063	161,367	101	936,280	972,995	104
July .....	156,196	155,588	100	1,092,476	1,128,583	103
August .....	164,266	166,508	101	1,256,742	1,295,091	103
September .....	164,725	155,697	95	1,421,467	1,450,788	102
October .....	165,589	175,012	106	1,587,056	1,625,800	102
November .....	159,897	161,523	101	1,746,953	1,787,323	102
December .....	164,691	166,827	101	1,911,644	1,954,150	102
<b>White edible product</b>						
January .....	63,082	68,228	108	63,082	68,228	108
February .....	58,550	61,623	105	121,632	129,851	107
March .....	59,214	67,094	113	180,846	196,945	109
April .....	61,582	70,404	114	242,428	267,349	110
May .....	67,606	77,947	115	310,034	345,296	111
June .....	70,948	68,196	96	380,982	413,492	109
July .....	71,336	68,015	95	452,318	481,507	106
August .....	72,886	70,438	97	525,204	551,945	105
September .....	63,505	69,920	110	588,709	621,865	106
October .....	70,117	73,190	104	658,826	695,055	105
November .....	62,792	57,890	92	721,618	752,945	104
December .....	66,065	70,913	107	787,683	823,858	105
<b>Yolks edible product</b>						
January .....	31,992	34,541	108	31,992	34,541	108
February .....	29,904	31,295	105	61,896	65,836	106
March .....	30,281	34,042	112	92,177	99,878	108
April .....	30,705	36,573	119	122,882	136,451	111
May .....	33,160	38,416	116	156,042	174,867	112
June .....	34,215	34,014	99	190,257	208,881	110
July .....	33,106	35,852	108	223,363	244,733	110
August .....	36,095	35,147	97	259,458	279,880	108
September .....	31,712	34,401	108	291,170	314,281	108
October .....	34,811	35,081	101	325,981	349,362	107
November .....	31,714	29,383	93	357,695	378,745	106
December .....	32,883	34,764	106	390,578	413,509	106
<b>Total edible product</b>						
January .....	252,666	269,664	107	252,666	269,664	107
February .....	228,881	246,236	108	481,547	515,900	107
March .....	242,853	265,057	109	724,400	780,957	108
April .....	249,241	265,496	107	973,641	1,046,453	107
May .....	268,652	285,338	106	1,242,293	1,331,791	107
June .....	265,226	263,577	99	1,507,519	1,595,368	106
July .....	260,638	259,455	100	1,768,157	1,854,823	105
August .....	273,247	272,093	100	2,041,404	2,126,916	104
September .....	259,942	260,018	100	2,301,346	2,386,934	104
October .....	270,517	283,283	105	2,571,863	2,670,217	104
November .....	254,403	248,796	98	2,826,266	2,919,013	103
December .....	263,639	272,504	103	3,089,905	3,191,517	103

## Federally Inspected Inedible Product by Month – United States: 2018-2019

Month	Monthly			Cumulative		
	2018	2019	2019 as percent of 2018	2018	2019	2019 as percent of 2018
	(1,000 pounds)	(1,000 pounds)	(percent)	(1,000 pounds)	(1,000 pounds)	(percent)
January .....	21,541	22,666	105	21,541	22,666	105
February .....	19,474	20,254	104	41,015	42,920	105
March .....	20,412	22,039	108	61,427	64,959	106
April .....	20,674	21,874	106	82,101	86,833	106
May .....	22,143	23,330	105	104,244	110,163	106
June .....	21,938	21,414	98	126,182	131,577	104
July .....	21,828	21,188	97	148,010	152,765	103
August .....	22,752	22,895	101	170,762	175,660	103
September .....	22,001	20,935	95	192,763	196,595	102
October .....	23,414	23,292	99	216,177	219,887	102
November .....	22,013	19,993	91	238,190	239,880	101
December .....	22,735	21,956	97	260,925	261,836	100

### Statistical Methodology

**Data Sources:** Data for the *Egg Products* report are obtained from Egg Products Volume Reports (FSIS Form 5200-11) completed by inspectors of FSIS, USDA. FSIS is responsible for administering a mandatory inspection program for egg products under the authority of the Egg Products Inspection Act of 1970. The act and its associated regulations require that all commercial egg breaking and processing plants operate under continuous USDA supervision. Reports are currently received from approximately 60 plants in the United States. Plant management provides monthly volume data to the resident USDA inspector at the applicable plant.

**Revision Policy:** Revisions are generally the result of late reports received by FSIS from plants. Revisions for the previous month and year-to-date totals are published in each monthly release. Additional revisions are published annually in the February report.

**Procedures and Reliability:** FSIS reviews plant data for accuracy and completeness and provides NASS a data file. NASS reviews the data for unusual values. The egg products estimates are based on a census of all commercial egg breaking and processing plants; therefore, there are no statistical estimation and sampling errors.

### Information Contacts

Listed below are the commodity specialists in the Livestock Branch of the National Agricultural Statistics Service to contact for additional information. E-mail inquiries may be sent to [nass@usda.gov](mailto:nass@usda.gov)

Travis Averill, Chief, Livestock Branch .....	(202) 692-0069
Tony Dorn, Head, Poultry and Specialty Commodities Section .....	(202) 690-3223
Holly Brenize – Poultry Slaughter.....	(202) 720-0585
Alissa Cowell-Mytar – Cold Storage, Capacity of Refrigerated Warehouses .....	(202) 720-4751
Liana Cuffman – Catfish and Trout, Mink, Census of Aquaculture .....	(202) 720-8784
Fatema Haque – Turkey Hatchery, Turkeys Raised .....	(202) 690-3244
Kim Linonis – Layers, Eggs, Egg Products .....	(202) 690-3676
Adam Peters – Honey, Honey Bee Colonies .....	(202) 690-4870
Takiyah Walker – Broiler Hatchery, Chicken Hatchery .....	(202) 720-6147

## Access to NASS Reports

For your convenience, you may access NASS reports and products the following ways:

- All reports are available electronically, at no cost, on the NASS web site: [www.nass.usda.gov](http://www.nass.usda.gov)
- Both national and state specific reports are available via a free e-mail subscription. To set-up this free subscription, visit [www.nass.usda.gov](http://www.nass.usda.gov) and click on “National” or “State” in upper right corner above “search” box to create an account and select the reports you would like to receive.
- Cornell’s Mann Library has launched a new website housing NASS’s and other agency’s archived reports. The new website, <https://usda.library.cornell.edu>. All email subscriptions containing reports will be sent from the new website, <https://usda.library.cornell.edu>. To continue receiving the reports via e-mail, you will have to go to the new website, create a new account and re-subscribe to the reports. If you need instructions to set up an account or subscribe, they are located at: <https://usda.library.cornell.edu/help>. You should whitelist [notifications@usda-esmis.library.cornell.edu](mailto:notifications@usda-esmis.library.cornell.edu) in your email client to avoid the emails going into spam/junk folders.

For more information on NASS surveys and reports, call the NASS Agricultural Statistics Hotline at (800) 727-9540, 7:30 a.m. to 4:00 p.m. ET, or e-mail: [nass@usda.gov](mailto:nass@usda.gov).

The U.S. Department of Agriculture (USDA) prohibits discrimination against its customers, employees, and applicants for employment on the basis of race, color, national origin, age, disability, sex, gender identity, religion, reprisal, and where applicable, political beliefs, marital status, familial or parental status, sexual orientation, or all or part of an individual's income is derived from any public assistance program, or protected genetic information in employment or in any program or activity conducted or funded by the Department. (Not all prohibited bases will apply to all programs and/or employment activities.)

If you wish to file a Civil Rights program complaint of discrimination, complete the [USDA Program Discrimination Complaint Form](#) (PDF), found online at [www.ascr.usda.gov/filing-program-discrimination-complaint-usda-customer](http://www.ascr.usda.gov/filing-program-discrimination-complaint-usda-customer), or at any USDA office, or call (866) 632-9992 to request the form. You may also write a letter containing all of the information requested in the form. Send your completed complaint form or letter to us by mail at U.S. Department of Agriculture, Director, Office of Adjudication, 1400 Independence Avenue, S.W., Washington, D.C. 20250-9410, by fax (202) 690-7442 or email at [program.intake@usda.gov](mailto:program.intake@usda.gov).