



United States  
Department of  
Agriculture

National  
Agricultural  
Statistics  
Service



Fr Nt 3-1 (05)

# Citrus Fruits 2005 Summary

## September 2005

# USDA



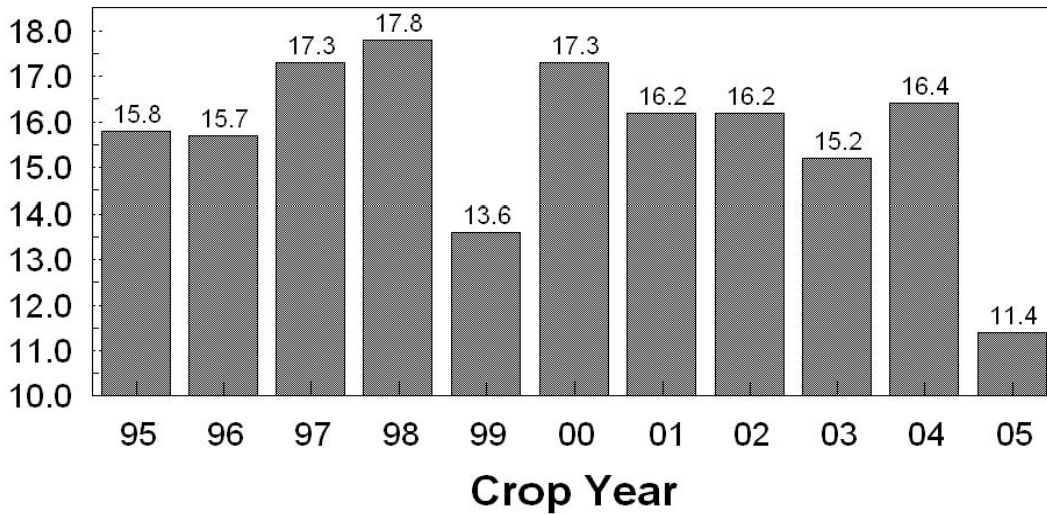


## Table of Contents

	<b>Page</b>
U.S. Citrus: Utilized Production and Value of Production: 1995-2005 .....	2
Comments .....	3
Citrus Fruits: United States .....	4
Oranges .....	6
Frozen Concentrated Orange Juice Yield, Florida .....	11
Oranges Processed, by Product Type, Florida .....	11
Grapefruit Processed, by Product Type, Florida .....	11
Tangerines Processed, by Product Type, Florida .....	11
Grapefruit .....	12
Lemons .....	14
Tangelos .....	14
Tangerines .....	14
Temples .....	14
Citrus Prices Narrative .....	16
Monthly Average Prices and Equivalent Returns, by Crop, By State .....	17
Marketing Year Average Prices Received, by Crop, By State .....	38
Marketing Seasons and Net Weight per Box .....	46
Price Definitions .....	47
Information Contacts .....	48
Index .....	49

## U.S. Citrus Utilized Production

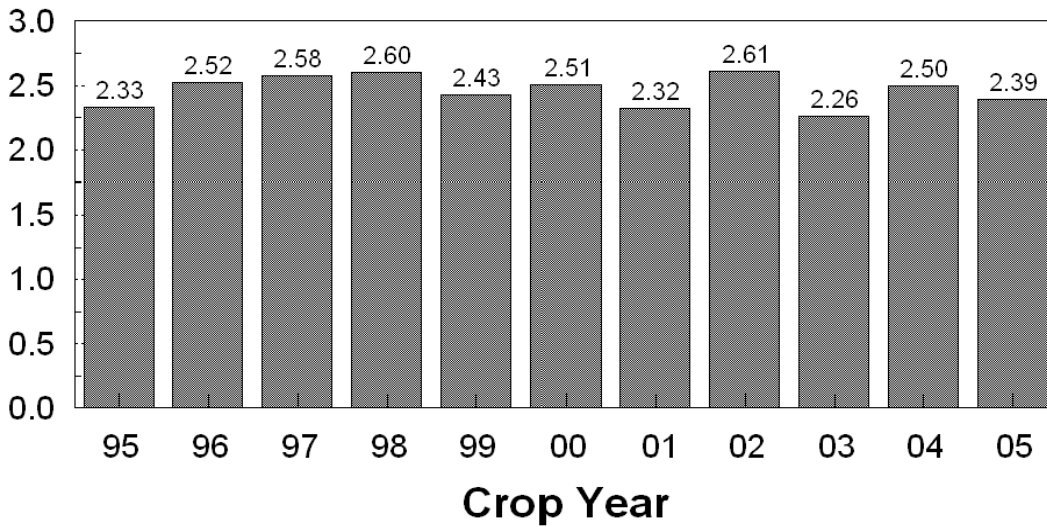
Million Tons



2005 on chart covers first bloom in 2004 through harvest in 2005, etc.

## U.S. Citrus Value of Production Packinghouse-door equivalents

Billion Dollars



2005 on chart covers first bloom in 2004 through harvest in 2005, etc.

## Citrus Utilized Production Down 31 Percent, Value Down 4 Percent

The 2004-05 season started with four hurricanes causing damage to Florida's citrus crop, severely limiting production. Three hurricanes hit Southeast Florida during September. On September 5, Frances made landfall along Florida's east coast, with sustained winds of over 100 miles per hour. Citrus crops, already damaged by Hurricane Charley in August, received additional damage. Ivan hit the Gulf Coast on September 16, causing extensive wind damage in the Florida panhandle. On September 26, Jeanne made landfall in almost the same spot as Frances 3 weeks earlier, dealing yet another blow to Florida's citrus groves. The Indian River growing area was greatly affected by Hurricane Frances on September 5 and Hurricane Jeanne on September 29. Both storms brought high winds and heavy rain which blew fruit off the trees, broke limbs, and uprooted trees. Standing water in groves caused softening of fruit and continued fruit droppage. Fruit drop rate was a limiting factor for citrus production in Florida, remaining at above average rates for most of the 2004-05 season.

Citrus utilized production for the 2004-05 season totaled 11.4 million tons, 31 percent below the 2003-04 season and 36 percent lower than the record high production of 17.8 million tons for the 1997-98 season. Florida accounted for 67 percent of total U.S. citrus production, California totaled 29 percent, while Texas and Arizona produced the remaining 4 percent.

Florida's orange production of 150 million boxes is down 38 percent from the previous season. Grapefruit utilization in Florida, at 12.8 million boxes, is down 69 percent from last season's utilization. Florida's total citrus utilization decreased 42 percent from the previous season, due to the hurricanes' effect. Bearing acreage, at 641,400 acres, is the lowest since the 1993-94 season.

California increased utilized citrus production by 16 percent from the 2003-04 season. California's all orange production, at 61.0 million boxes, is 21 percent higher than the previous season. Grapefruit production, at 5.80 million boxes, is unchanged from the 2003-04 season. Utilized production of citrus in Texas is up 14 percent from the 2003-04 season. Orange production increased 7 percent from the previous season and grapefruit production is up 16 percent. Arizona's total citrus production is down 22 percent from last season. Grapefruit utilized production is unchanged, while oranges and lemons are down 9 and 20 percent, respectively, from the 2003-04 season.

The value of the 2004-05 U.S. citrus crop is down 4 percent from last season to \$2.39 billion (packinghouse-door equivalent). Total value of production for 2004-05 is lower for all types of citrus, except grapefruit, lemons, and tangerines. Orange value of production decreased 16 percent from last season, while grapefruit value increased 25 percent. Tangerine value of production increased 13 percent from last season. Lemon value of production increased 30 percent. Tangelo and temple values are down 20 percent and 33 percent, respectively, from the previous season.

Overall comparisons discussed above are based on like fruit types. Limes and K-Early Citrus are not included in U.S. comparisons because estimates were discontinued in the 2002-03 season. The revised production and utilization estimates are based on all data available at the end of the marketing season, including information from marketing orders, shipments, and processor records. Allowances are made for recorded local utilization and home use. Estimates for the 2004-05 California Valencia oranges and grapefruit are preliminary, since the marketing season is not complete at publication time. Revisions to the utilized production estimates for all citrus for the 2004-05 season will be available in the April 2006 *Crop Production* release.

**Citrus Fruits: Acreage, Production, Utilization, and Value by Crop,  
United States, 2002-05**

Crop and Season	Bearing Acreage	Production	Utilization of Production		Value of Production <sup>1</sup>
			Fresh	Processed	
	<i>Acres</i>	<i>1,000 Tons</i>	<i>1,000 Tons</i>	<i>1,000 Tons</i>	<i>1,000 Dollars</i>
<b>Oranges</b>					
Early, Midseason and Navel					
2002-03	423,000	6,680	1,627	5,053	881,496
2003-04	406,800	7,223	1,589	5,634	965,972
2004-05	390,100	5,246	1,478	3,768	812,315
Valencia					
2002-03	368,700	4,865	741	4,124	683,162
2003-04	354,600	5,649	588	5,061	816,185
2004-05	342,000	3,866	734	3,132	685,748
All Oranges					
2002-03	791,700	11,545	2,368	9,177	1,564,658
2003-04	761,400	12,872	2,177	10,695	1,782,157
2004-05	732,100	9,112	2,212	6,900	1,498,063
<b>Grapefruit</b>					
2002-03	128,500	2,063	964	1,099	269,381
2003-04	114,800	2,165	1,021	1,144	317,218
2004-05	103,500	1,008	619	389	397,909
<b>Lemons</b>					
2002-03	61,800	1,026	557	469	291,425
2003-04	59,800	798	540	258	269,753
2004-05	58,500	813	562	251	351,897
<b>Tangelos</b>					
2002-03	9,100	105	27	78	11,489
2003-04	8,000	45	25	20	10,021
2004-05	6,400	70	22	48	8,004
<b>Tangerines <sup>2</sup></b>					
2002-03	36,600	382	292	90	117,432
2003-04	36,200	417	301	116	116,475
2004-05	35,600	331	259	72	130,068
<b>Temples</b>					
2002-03	4,200	59	14	45	5,591
2003-04	3,400	63	15	48	4,915
2004-05	2,900	29	9	20	3,314

<sup>1</sup> Packinghouse-door equivalents.

<sup>2</sup> FL only: Includes Fallglo, Sunburst, and Honey varieties only.

**Citrus Fruits: Acreage, Production, Utilization, and Value by State, United States, 2003-05**

State	Bearing Acreage	Production	Utilization of Production		Value of Production <sup>1</sup>
			Fresh	Processed	
	<i>Acres</i>	<i>1,000 Tons</i>	<i>1,000 Tons</i>	<i>1,000 Tons</i>	<i>1,000 Dollars</i>
Total Citrus					
AZ					
2002-03	27,300	152	92	60	40,325
2003-04	27,300	162	112	50	41,267
2004-05	26,500	127	79	48	38,276
CA					
2002-03	259,200	3,530	2,622	908	836,550
2003-04	250,000	2,855	2,377	478	911,146
2004-05	243,800	3,309	2,591	718	1,131,851
FL					
2002-03	718,100	11,206	1,327	9,879	1,356,930
2003-04	679,000	13,045	1,404	11,641	1,518,331
2004-05	641,400	7,588	836	6,752	1,130,444
TX					
2002-03	27,300	292	181	111	26,171
2003-04	27,300	298	186	112	29,795
2004-05	27,300	339	177	162	88,684
US					
2002-03	1,031,900	15,180	4,222	10,958	2,259,976
2003-04	983,600	16,360	4,079	12,281	2,500,539
2004-05	939,000	11,363	3,683	7,680	2,389,255

<sup>1</sup> Packinghouse-door equivalents.

**Oranges: Acreage, Yield, and Utilization  
by State and Crop, 2003-05**

State, Crop and Season	Bearing Acreage	Yield per Acre	Utilization of Production		
			Fresh	Processed	Total
	<i>Acres</i>	<i>Boxes</i>	<i>1,000 Boxes<sup>1</sup></i>	<i>1,000 Boxes<sup>1</sup></i>	<i>1,000 Boxes<sup>1</sup></i>
<b>AZ</b>					
Navel and Misc.					
2002-03	3,000	67	146	54	200
2003-04	3,000	100	198	102	300
2004-05	2,800	86	143	97	240
Valencia					
2002-03	2,800	96	253	17	270
2003-04	2,800	61	170		170
2004-05	2,700	70	190		190
All					
2002-03	5,800	81	399	71	470
2003-04	5,800	81	368	102	470
2004-05	5,500	78	333	97	430
<b>CA</b>					
Navel and Misc.					
2002-03	129,500	324	34,000	8,000	42,000
2003-04	130,000	304	34,300	5,200	39,500
2004-05	130,500	330	32,800	10,200	43,000
Valencia					
2002-03	60,000	333	15,800	4,200	20,000
2003-04	52,000	212	10,200	800	11,000
2004-05	45,500	396	15,600	2,400	18,000
All					
2002-03	189,500	327	49,800	12,200	62,000
2003-04	182,000	277	44,500	6,000	50,500
2004-05	176,000	347	48,400	12,600	61,000
<b>FL</b>					
Early, Midseason					
2002-03	283,000	396	6,773	105,227	112,000
2003-04	266,300	473	5,615	120,385	126,000
2004-05	249,300	317	4,403	74,697	79,100
Valencia					
2002-03	304,600	299	2,940	88,060	91,000
2003-04	298,500	389	4,278	111,722	116,000
2004-05	292,500	241	2,980	67,520	70,500
All					
2002-03	587,600	345	9,713	193,287	203,000
2003-04	564,800	428	9,893	232,107	242,000
2004-05	541,800	276	7,383	142,217	149,600

<sup>1</sup> See page 46 for net weight per box.



**Oranges: Price and Value by State and Crop, 2003-05**

State, Crop and Season	Price per Box <sup>1 2</sup>			Value of Production		
	Fresh	Processed	All	Fresh	Processed	Total
	<i>Dollars</i>	<i>Dollars</i>	<i>Dollars</i>	<i>1,000 Dollars</i>	<i>1,000 Dollars</i>	<i>1,000 Dollars</i>
<b>AZ</b>						
Navel and Misc.						
2002-03	9.46	0.40	7.02	1,381	22	1,403
2003-04	9.72	0.39	6.55	1,925	40	1,965
2004-05	12.97	0.38	7.88	1,855	37	1,892
Valencia						
2002-03	3.08	0.34	2.91	779	6	785
2003-04	4.74		4.74	806		806
2004-05	3.70		3.70	703		703
All						
2002-03	5.41	0.39	4.66	2,160	28	2,188
2003-04	7.42	0.39	5.90	2,731	40	2,771
2004-05	7.68	0.38	6.03	2,558	37	2,595
<b>CA</b>						
Navel and Misc.						
2002-03	9.76	0.40	7.98	331,840	3,200	335,040
2003-04	12.22	0.39	10.66	419,146	2,028	421,174
2004-05	12.77	0.38	9.83	418,856	3,876	422,732
Valencia						
2002-03	8.18	0.34	6.53	129,244	1,428	130,672
2003-04	13.94	0.32	12.95	142,188	256	142,444
2004-05	13.94	0.32	12.12	217,464	768	218,232
All						
2002-03	9.26	0.38	7.51	461,084	4,628	465,712
2003-04	12.61	0.38	11.16	561,334	2,284	563,618
2004-05	13.15	0.37	10.51	636,320	4,644	640,964
<b>FL</b>						
Early, Midseason						
2002-03	7.90	4.62	4.82	53,507	486,149	539,656
2003-04	6.85	4.14	4.26	38,463	498,394	536,857
2004-05	10.00	4.46	4.77	44,030	333,149	377,179
Valencia						
2002-03	7.50	6.00	6.05	22,050	528,360	550,410
2003-04	5.05	5.82	5.79	21,604	650,222	671,826
2004-05	8.20	6.53	6.60	24,436	440,906	465,342
All						
2002-03	7.78	5.25	5.37	75,557	1,014,509	1,090,066
2003-04	6.07	4.95	4.99	60,067	1,148,616	1,208,683
2004-05	9.27	5.44	5.63	68,466	774,055	842,521

<sup>1</sup> Equivalent packinghouse-door returns.

<sup>2</sup> See page 47 for price per box calculations.

**Oranges: Acreage, Yield, and Utilization  
by State and Crop, 2003-05**

State, Crop and Season	Bearing Acreage	Yield per Acre	Utilization of Production		
			Fresh	Processed	Total
	<i>Acres</i>	<i>Boxes</i>	<i>1,000 Boxes <sup>1</sup></i>	<i>1,000 Boxes <sup>1</sup></i>	<i>1,000 Boxes <sup>1</sup></i>
<b>TX <sup>2</sup></b>					
Early, Midseason					
2002-03	7,500	180	961	389	1,350
2003-04	7,500	189	998	422	1,420
2004-05	7,500	200	1,054	446	1,500
Valencia					
2002-03	1,300	169	167	53	220
2003-04	1,300	177	171	59	230
2004-05	1,300	208	178	92	270
All					
2002-03	8,800	178	1,128	442	1,570
2003-04	8,800	188	1,169	481	1,650
2004-05	8,800	201	1,232	538	1,770
<b>US</b>					
Early, Midseason and Navel					
2002-03	423,000	368	41,880	113,670	155,550
2003-04	406,800	411	41,111	126,109	167,220
2004-05	390,100	317	38,400	85,440	123,840
Valencia					
2002-03	368,700	302	19,160	92,330	111,490
2003-04	354,600	359	14,819	112,581	127,400
2004-05	342,000	260	18,948	70,012	88,960
Total					
2002-03	791,700	337	61,040	206,000	267,040
2003-04	761,400	387	55,930	238,690	294,620
2004-05	732,100	291	57,348	155,452	212,800

<sup>1</sup> See page 46 for net weight per box.

<sup>2</sup> Includes small quantities of tangerines in Early, Midseason.

**Oranges: Price and Value by State and Crop, 2003-05**

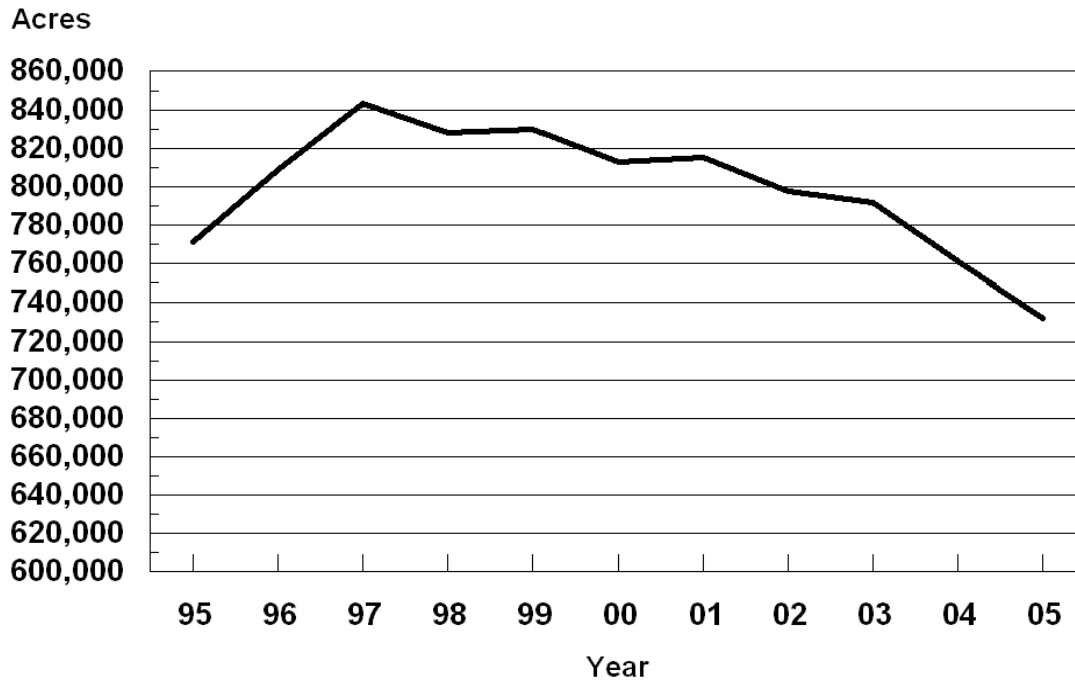
State, Crop and Season	Price per Box <sup>1 2</sup>			Value of Production		
	Fresh	Processed	All	Fresh	Processed	Total
	<i>Dollars</i>	<i>Dollars</i>	<i>Dollars</i>	<i>1,000 Dollars</i>	<i>1,000 Dollars</i>	<i>1,000 Dollars</i>
<b>TX<sup>3</sup></b>						
Early, Midseason						
2002-03	4.41	2.98	4.00	4,238	1,159	5,397
2003-04	4.91	2.55	4.21	4,900	1,076	5,976
2004-05	9.11	2.04	7.01	9,602	910	10,512
Valencia						
2002-03	6.81	2.98	5.89	1,137	158	1,295
2003-04	5.61	2.55	4.82	959	150	1,109
2004-05	7.21	2.04	5.45	1,283	188	1,471
All						
2002-03	4.77	2.98	4.26	5,375	1,317	6,692
2003-04	5.01	2.55	4.29	5,859	1,226	7,085
2004-05	8.84	2.04	6.77	10,885	1,098	11,983
<b>US</b>						
Early, Midseason and Navel						
2002-03	9.28	4.36	5.56	390,966	490,530	881,496
2003-04	11.16	4.00	5.58	464,434	501,538	965,972
2004-05	12.29	4.03	6.36	474,343	337,972	812,315
Valencia						
2002-03	7.98	5.78	6.12	153,210	529,952	683,162
2003-04	10.83	5.79	6.31	165,557	650,628	816,185
2004-05	12.72	6.35	7.56	243,886	441,862	685,748
Total						
2002-03	8.87	5.00	5.80	544,176	1,020,482	1,564,658
2003-04	11.07	4.85	5.90	629,991	1,152,166	1,782,157
2004-05	12.43	5.08	6.87	718,229	779,834	1,498,063

<sup>1</sup> Equivalent packinghouse-door returns.

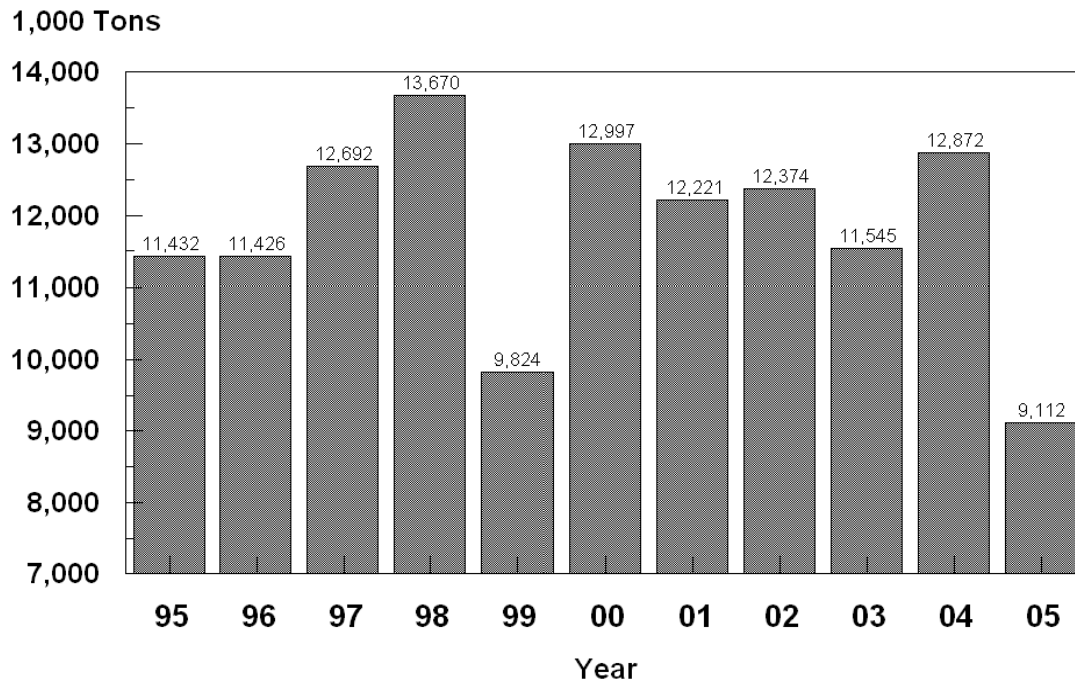
<sup>2</sup> See page 47 for price per box calculations.

<sup>3</sup> Includes small quantities of tangerines in Early, Midseason.

## U.S. Oranges Bearing Acres



## U.S. Oranges Utilized Production



**Frozen Concentrated Orange Juice Yield, Florida, 2003-05** <sup>1 2</sup>

Season	Early, Midseason	Valencia	All
	<i>Gallons per Box</i>	<i>Gallons per Box</i>	<i>Gallons per Box</i>
2002-03	1.49199	1.60587	1.53659
2003-04	1.44560	1.69155	1.55656
2004-05	1.52920	1.67671	1.58311

<sup>1</sup> Gallons per box at 42.0 degrees Brix.

<sup>2</sup> Per Florida Citrus Processors Association.

**Oranges Processed, by Product Type, Florida, 2003-05** <sup>1 2</sup>

Season	Frozen Concentrates	Chilled Products	Other Processed <sup>3</sup>	Total Processed
	<i>1,000 Boxes</i>	<i>1,000 Boxes</i>	<i>1,000 Boxes</i>	<i>1,000 Boxes</i>
2002-03	102,073	92,506	1,445	196,024
2003-04	139,727	93,393	500	233,620
2004-05	54,322	88,514	2,118	144,954

<sup>1</sup> Includes tangelos, Temples, and K-Early Citrus.

<sup>2</sup> Per Florida Citrus Processors Association.

<sup>3</sup> Includes sections and salads, canned juice, and blend.

**Grapefruit Processed, by Product Type, Florida, 2003-05** <sup>1</sup>

Season	Frozen Concentrates	Chilled Products	Other Processed <sup>2</sup>	Total Processed
	<i>1,000 Boxes</i>	<i>1,000 Boxes</i>	<i>1,000 Boxes</i>	<i>1,000 Boxes</i>
2002-03	15,958	6,221	932	23,111
2003-04	17,186	6,586	471	24,243
2004-05	2,466	2,763	161	5,390

<sup>1</sup> Per Florida Citrus Processors Association.

<sup>2</sup> Includes sections and salads, canned juice, and blend.

**Tangerines Processed, by Product Type, Florida, 2003-05** <sup>1</sup>

Season	Frozen Concentrates	Chilled Products	Other Processed <sup>2</sup>	Total Processed
	<i>1,000 Boxes</i>	<i>1,000 Boxes</i>	<i>1,000 Boxes</i>	<i>1,000 Boxes</i>
2002-03	971		615	1,586
2003-04	829		1,231	2,060
2004-05	482		650	1,132

<sup>1</sup> Per Florida Citrus Processors Association.

<sup>2</sup> Includes sections and salads, canned juice, and blend.

**Grapefruit: Acreage, Yield, and Utilization  
by State, Crop, and United States, 2003-05**

State, Crop and Season	Bearing Acreage	Yield per Acre	Utilization of Production		
			Fresh	Processed	Total
	<i>Acres</i>	<i>Boxes</i>	<i>1,000 Boxes<sup>1</sup></i>	<i>1,000 Boxes<sup>1</sup></i>	<i>1,000 Boxes<sup>1</sup></i>
AZ					
All					
2002-03	1,500	87	124	6	130
2003-04	1,500	93	140		140
2004-05	1,500	93	140		140
CA					
All					
2002-03	13,000	431	4,900	700	5,600
2003-04	12,500	464	5,100	700	5,800
2004-05	12,500	464	5,200	600	5,800
FL					
White Seedless <sup>2</sup>					
2002-03	38,600	420	3,172	13,028	16,200
2003-04	31,300	508	3,273	12,627	15,900
2004-05	25,800	132	1,350	2,050	3,400
Colored Seedless					
2002-03	56,900	395	12,417	10,083	22,500
2003-04	51,000	490	13,384	11,616	25,000
2004-05	45,200	208	6,060	3,340	9,400
All					
2002-03	95,500	405	15,589	23,111	38,700
2003-04	82,300	497	16,657	24,243	40,900
2004-05	71,000	180	7,410	5,390	12,800
TX					
All					
2002-03	18,500	305	3,317	2,333	5,650
2003-04	18,500	308	3,418	2,282	5,700
2004-05	18,500	357	3,125	3,475	6,600
US					
Total					
2002-03	128,500	390	23,930	26,150	50,080
2003-04	114,800	458	25,315	27,225	52,540
2004-05	103,500	245	15,875	9,465	25,340

<sup>1</sup> See page 46 for net weight per box.

<sup>2</sup> "Other" seedy grapefruit estimates included with white seedless.

**Grapefruit: Price and Value by State, Crop, and United States, 2003-05**

State, Crop and Season	Price per Box <sup>1 2</sup>			Value of Production		
	Fresh	Processed	All	Fresh	Processed	Total
	<i>Dollars</i>	<i>Dollars</i>	<i>Dollars</i>	<i>1,000 Dollars</i>	<i>1,000 Dollars</i>	<i>1,000 Dollars</i>
AZ						
All						
2002-03	8.12	-0.26	7.73	1,007	-2	1,005
2003-04	9.69		9.69	1,357		1,357
2004-05	15.16		15.16	2,122		2,122
CA						
All						
2002-03	13.22	-0.26	11.54	64,778	-182	64,596
2003-04	13.80	-0.27	12.10	70,380	-189	70,191
2004-05	21.36	-0.28	19.12	111,072	-168	110,904
FL						
White Seedless <sup>3</sup>						
2002-03	9.57	2.73	4.07	30,356	35,566	65,922
2003-04	9.40	2.67	4.06	30,766	33,714	64,480
2004-05	23.72	8.39	14.48	32,022	17,200	49,222
Colored Seedless						
2002-03	7.13	2.96	5.26	88,533	29,846	118,379
2003-04	9.22	3.02	6.34	123,400	35,080	158,480
2004-05	21.48	8.62	16.91	130,169	28,791	158,960
All						
2002-03	7.63	2.83	4.76	118,889	65,412	184,301
2003-04	9.26	2.84	5.45	154,166	68,794	222,960
2004-05	21.89	8.53	16.26	162,191	45,991	208,182
TX						
All						
2002-03	5.31	0.80	3.45	17,613	1,866	19,479
2003-04	6.01	0.95	3.98	20,542	2,168	22,710
2004-05	23.21	1.20	11.62	72,531	4,170	76,701
US						
Total						
2002-03	8.27	2.59	5.24	202,287	67,094	269,381
2003-04	9.59	2.63	5.91	246,445	70,773	317,218
2004-05	21.96	5.45	15.59	347,916	49,993	397,909

<sup>1</sup> Equivalent packinghouse-door returns.

<sup>2</sup> See page 47 for price per box calculation.

<sup>3</sup> "Other" seedy grapefruit estimates included with white seedless.

**Lemons, Tangelos, Tangerines, and Temples:  
Acreage, Yield, and Utilization by Crop and State, 2003-05**

Crop, State and Season	Bearing Acreage	Yield per Acre	Utilization of Production		
			Fresh	Processed	Total
	<i>Acres</i>	<i>Boxes</i>	<i>1,000 Boxes<sup>1</sup></i>	<i>1,000 Boxes<sup>1</sup></i>	<i>1,000 Boxes<sup>1</sup></i>
<b>Lemons</b>					
AZ					
2002-03	14,800	203	1,546	1,454	3,000
2003-04	14,800	203	2,008	992	3,000
2004-05	14,500	166	1,325	1,075	2,400
CA					
2002-03	47,000	511	13,100	10,900	24,000
2003-04	45,000	400	12,200	5,800	18,000
2004-05	44,000	432	13,470	5,530	19,000
US					
2002-03	61,800	437	14,646	12,354	27,000
2003-04	59,800	351	14,208	6,792	21,000
2004-05	58,500	366	14,795	6,605	21,400
<b>Tangelos</b>					
FL					
2002-03	9,100	258	608	1,742	2,350
2003-04	8,000	125	545	455	1,000
2004-05	6,400	242	495	1,055	1,550
<b>Tangerines</b>					
AZ <sup>2</sup>					
2002-03	5,200	83	377	53	430
2003-04	5,200	133	466	224	690
2004-05	5,000	80	322	78	400
CA <sup>2</sup>					
2002-03	9,700	289	2,450	350	2,800
2003-04	10,500	210	1,939	261	2,200
2004-05	11,300	248	2,396	404	2,800
FL <sup>3</sup>					
2002-03	21,700	253	3,914	1,586	5,500
2003-04	20,500	317	4,440	2,060	6,500
2004-05	19,300	231	3,318	1,132	4,450
US <sup>2</sup>					
2002-03	36,600	239	6,741	1,989	8,730
2003-04	36,200	259	6,845	2,545	9,390
2004-05	35,600	215	6,036	1,614	7,650
<b>Temples</b>					
FL					
2002-03	4,200	310	305	995	1,300
2003-04	3,400	412	342	1,058	1,400
2004-05	2,900	224	213	437	650

<sup>1</sup> See page 46 for net weight per box.

<sup>2</sup> Includes tangelos and tangors.

<sup>3</sup> 2001-02 includes Robinson, Fallglo, Sunburst, Dancy, and Honey varieties; starting with 2002-03 season includes Fallglo, Sunburst, and Honey varieties only.



**Lemons, Tangelos, Tangerines, and Temples:  
Price and Value by Crop and State, 2003-05**

Crop, State and Season	Price per Box <sup>1 2</sup>			Value of Production		
	Fresh	Processed	All	Fresh	Processed	Total
	<i>Dollars</i>	<i>Dollars</i>	<i>Dollars</i>	<i>1,000 Dollars</i>	<i>1,000 Dollars</i>	<i>1,000 Dollars</i>
Lemons						
AZ						
2002-03	18.80	0.22	9.80	29,065	320	29,385
2003-04	14.40	0.20	9.70	28,915	198	29,113
2004-05	20.70	0.18	11.51	27,428	194	27,622
CA						
2002-03	19.82	0.22	10.92	259,642	2,398	262,040
2003-04	19.62	0.22	13.37	239,364	1,276	240,640
2004-05	24.00	0.18	17.07	323,280	995	324,275
US						
2002-03	19.71	0.22	10.79	288,707	2,718	291,425
2003-04	18.88	0.22	12.85	268,279	1,474	269,753
2004-05	23.70	0.18	16.44	350,708	1,189	351,897
Tangelos						
FL						
2002-03	9.90	3.14	4.89	6,019	5,470	11,489
2003-04	16.25	2.56	10.02	8,856	1,165	10,021
2004-05	9.20	3.27	5.16	4,554	3,450	8,004
Tangerines						
AZ <sup>3</sup>						
2002-03	20.58	-0.22	18.02	7,759	-12	7,747
2003-04	17.34	-0.24	11.63	8,080	-54	8,026
2004-05	18.50	-0.26	14.84	5,957	-20	5,937
CA <sup>3</sup>						
2002-03	17.98	0.43	15.79	44,051	151	44,202
2003-04	18.88	0.34	16.68	36,608	89	36,697
2004-05	23.20	0.30	19.90	55,587	121	55,708
FL <sup>4</sup>						
2002-03	15.30	3.53	11.91	59,884	5,599	65,483
2003-04	14.75	3.04	11.04	65,490	6,262	71,752
2004-05	19.10	4.46	15.38	63,374	5,049	68,423
US <sup>3</sup>						
2002-03	16.40	2.99	13.23	111,694	5,738	117,432
2003-04	15.90	2.57	12.19	110,178	6,297	116,475
2004-05	20.49	3.39	16.79	124,918	5,150	130,068
Temples						
FL						
2002-03	5.90	3.81	4.30	1,800	3,791	5,591
2003-04	6.05	2.69	3.51	2,069	2,846	4,915
2004-05	6.80	4.27	5.10	1,448	1,866	3,314

<sup>1</sup> Equivalent packinghouse-door returns.

<sup>2</sup> See page 47 for price per box calculation.

<sup>3</sup> Includes tangelos and tangors.

<sup>4</sup> Includes Fallglo, Sunburst, and Honey varieties only.

## Citrus Prices

Revised State and U.S. monthly average prices and equivalent returns, and marketing year average prices for the 2002-03, 2003-04, and 2004-05 citrus crops are shown on the following pages. Revised monthly prices refer to all fruit sold in a given month regardless of the crop year in which the fruit was harvested.

Marketing year average prices refer to the prices received by growers for the entire marketing season for any one crop year. The crop year 2004-05 as shown on all citrus tables in this publication refers to the crop which bloomed in 2004 and was marketed during the 2004-05 season. For example, the 2004-05 marketing year average price received by California growers for tangerines refers to marketings from October 2004 through May 2005. In some years the season may vary a month or two but a price was estimated only for those months with sufficient movement.

Monthly and marketing year average prices are weighted by box size at the U.S. level for grapefruit, oranges, and tangerines. See page 46 for approximate net contents per box at the State level.

Citrus prices are based on weighted average F.O.B. packed prices received for fresh fruit and weighted average prices received at the processing plant door for processing fruit. Equivalent returns for fresh and processed fruits are calculated at the packinghouse-door level and on-tree level by deducting hauling, picking, sorting, grading, packing, cooling, marketing, and other costs from the two base prices. In some cases, this results in negative returns.

**Oranges: Average Prices and Equivalent Returns, United States  
September 2002 - August 2005**

State, Month, and Year	F.O.B. Packed	Equiv. P.H.D.			Equiv. On-Tree		
		All	Fresh	Proc.	All	Fresh	Proc.
US							
	All Oranges						
	<i>Dollars per box</i>	<i>Dollars per box</i>	<i>Dollars per box</i>	<i>Dollars per box</i>	<i>Dollars per box</i>	<i>Dollars per box</i>	<i>Dollars per box</i>
Sep 2002	15.50	7.72	8.72	0.74	5.33	6.33	-1.65
Oct	16.80	7.44	9.54	3.35	5.22	7.31	1.13
Nov	18.30	5.38	10.77	4.44	3.17	8.53	2.24
Dec	17.00	5.32	9.59	4.52	3.10	7.29	2.32
Jan 2003	14.80	4.98	7.34	4.60	2.77	5.03	2.40
Feb	13.90	5.00	6.55	4.51	2.75	4.20	2.30
Mar	15.90	6.32	8.62	5.60	4.07	6.26	3.39
Apr	17.30	6.53	10.05	5.82	4.29	7.67	3.62
May	17.50	6.54	10.25	5.83	4.31	7.87	3.62
Jun	16.90	6.81	9.88	5.53	4.54	7.47	3.31
Jul	14.70	6.22	7.80	0.35	3.78	5.36	-2.09
Aug	15.00	6.15	8.08	0.34	3.71	5.64	-2.10
Sep	14.30	5.44	7.38	0.34	3.00	4.94	-2.10
Oct	15.60	5.17	8.06	1.63	2.88	5.75	-0.63
Nov	18.80	4.89	11.02	3.90	2.81	8.71	1.84
Dec	18.20	5.06	10.49	4.04	2.96	8.14	1.99
Jan 2004	17.40	4.87	9.80	4.10	2.78	7.42	2.05
Feb	17.60	5.24	9.96	4.14	3.12	7.57	2.08
Mar	18.80	6.76	11.36	5.58	4.56	8.94	3.43
Apr	18.10	6.37	10.58	5.70	4.18	8.19	3.54
May	18.20	6.34	10.77	5.74	4.16	8.36	3.58
Jun	19.40	6.84	12.04	5.91	4.65	9.64	3.76
Jul	19.60	11.18	12.54	0.32	8.69	10.05	-2.17
Aug	21.00	13.14	13.94	0.32	10.65	11.45	-2.17
Sep	25.40	18.34	18.34		15.85	15.85	
Oct	31.00	23.28	23.50	2.04	20.87	21.08	0.71
Nov	21.70	7.65	13.67	2.75	5.34	11.24	0.53
Dec	20.10	5.52	12.24	3.86	3.27	9.79	1.66
Jan 2005	19.20	5.64	11.34	4.42	3.39	8.90	2.21
Feb	18.60	5.94	10.87	4.74	3.69	8.41	2.53
Mar	18.90	7.15	11.20	5.49	4.84	8.74	3.24
Apr	19.80	7.12	12.16	5.86	4.80	9.69	3.59
May	20.00	7.42	12.47	6.26	5.11	9.99	4.00
Jun	19.10	7.74	11.82	6.53	5.43	9.34	4.27
Jul	17.50	9.04	10.44	0.32	6.55	7.95	-2.17
Aug	16.80	7.39	9.74	0.32	4.90	7.25	-2.17

**Oranges: Average Prices and Equivalent Returns, Arizona  
November 2002 - June 2005**

State, Month, and Year	F.O.B. Packed	Equiv. P.H.D.			Equiv. On-Tree		
		All	Fresh	Proc.	All	Fresh	Proc.
AZ	All Oranges						
	<i>Dollars per box</i>	<i>Dollars per box</i>	<i>Dollars per box</i>	<i>Dollars per box</i>	<i>Dollars per box</i>	<i>Dollars per box</i>	<i>Dollars per box</i>
Nov 2002	20.40	10.16	13.16	0.40	7.76	10.76	-2.00
Dec	17.50	7.54	10.26	0.40	5.14	7.86	-2.00
Jan 2003	13.70	4.77	6.46	0.40	2.37	4.06	-2.00
Feb							
Mar	15.80	8.88	8.88		6.44	6.44	
Apr	9.65	2.73	2.73		0.29	0.29	
May	9.04	1.76	2.12	0.34	-0.68	-0.32	-2.10
Jun	9.60	2.68	2.68		0.24	0.24	
Nov	19.00	6.01	11.62	0.39	3.56	9.17	-2.06
Dec	17.60	7.25	10.22	0.39	4.80	7.77	-2.06
Jan 2004	17.20	6.77	9.82	0.39	4.32	7.37	-2.06
Feb	16.00	5.88	8.68	0.39	3.43	6.23	-2.06
Mar	14.20	5.90	7.04	0.39	3.42	4.56	-2.06
Apr	11.30	4.24	4.24		1.75	1.75	
Nov	23.00	11.08	15.47	0.38	8.57	12.96	-2.13
Dec	20.30	6.77	12.77	0.38	4.26	10.26	-2.13
Jan 2005	19.40	8.04	11.87	0.38	5.53	9.36	-2.13
Feb	18.20	5.90	10.67	0.38	3.39	8.16	-2.13
Mar	16.80	9.59	9.59		7.05	7.05	
Apr	9.55	2.35	2.35		-0.19	-0.19	
May	9.56	2.36	2.36		-0.18	-0.18	
Jun	5.60	-1.60	-1.60		-4.14	-4.14	

**Oranges: Average Prices and Equivalent Returns, Arizona  
November 2002 - June 2005**

State, Month, and Year	F.O.B. Packed	Equiv. P.H.D.			Equiv. On-Tree		
		All	Fresh	Proc.	All	Fresh	Proc.
AZ							
Early and Midseason							
	<i>Dollars per box</i>	<i>Dollars per box</i>	<i>Dollars per box</i>	<i>Dollars per box</i>	<i>Dollars per box</i>	<i>Dollars per box</i>	<i>Dollars per box</i>
Nov 2002	20.40	10.16	13.16	0.40	7.76	10.76	-2.00
Dec 2002	17.50	7.54	10.26	0.40	5.14	7.86	-2.00
Jan 2003	13.70	4.77	6.46	0.40	2.37	4.06	-2.00
Nov 2003	19.00	6.01	11.62	0.39	3.56	9.17	-2.06
Dec 2003	17.60	7.25	10.22	0.39	4.80	7.77	-2.06
Jan 2004	17.20	6.77	9.82	0.39	4.32	7.37	-2.06
Feb 2004	16.90	6.29	9.52	0.39	3.84	7.07	-2.06
Mar 2004	15.60	5.24	8.22	0.39	2.79	5.77	-2.06
Nov 2004	23.00	11.08	15.47	0.38	8.57	12.96	-2.13
Dec 2004	20.30	6.77	12.77	0.38	4.26	10.26	-2.13
Jan 2005	19.40	8.04	11.87	0.38	5.53	9.36	-2.13
Feb 2005	18.20	5.90	10.67	0.38	3.39	8.16	-2.13
Mar 2005	15.00	7.47	7.47		4.96	4.96	
AZ							
Valencias							
Mar 2003	15.80	8.88	8.88		6.44	6.44	
Apr 2003	9.65	2.73	2.73		0.29	0.29	
May 2003	9.04	1.76	2.12	0.34	-0.68	-0.32	-2.10
Jun 2003	9.60	2.68	2.68		0.24	0.24	
Feb 2004	4.00	-3.06	-3.06		-5.55	-5.55	
Mar 2004	13.50	6.44	6.44		3.95	3.95	
Apr 2004	11.30	4.24	4.24		1.75	1.75	
Mar 2005	16.90	9.70	9.70		7.16	7.16	
Apr 2005	9.55	2.35	2.35		-0.19	-0.19	
May 2005	9.56	2.36	2.36		-0.18	-0.18	
Jun 2005	5.60	-1.60	-1.60		-4.14	-4.14	

**Oranges: Average Prices and Equivalent Returns, California  
September 2002 - August 2005**

State, Month, and Year	F.O.B. Packed	Equiv. P.H.D.			Equiv. On-Tree		
		All	Fresh	Proc.	All	Fresh	Proc.
CA		All Oranges					
	<i>Dollars per box</i>	<i>Dollars per box</i>	<i>Dollars per box</i>	<i>Dollars per box</i>	<i>Dollars per box</i>	<i>Dollars per box</i>	<i>Dollars per box</i>
Sep 2002	15.50	7.72	8.72	0.74	5.33	6.33	-1.65
Oct	15.80	7.78	9.02	0.74	5.39	6.63	-1.65
Nov	20.70	11.95	13.46	0.40	9.54	11.05	-2.01
Dec	17.90	9.84	10.66	0.40	7.43	8.25	-2.01
Jan 2003	15.30	6.95	8.06	0.40	4.54	5.65	-2.01
Feb	13.90	5.52	6.67	0.40	3.11	4.26	-2.01
Mar	16.10	7.02	8.86	0.40	4.61	6.45	-2.01
Apr	18.00	8.72	10.83	0.40	6.30	8.41	-2.02
May	18.20	9.04	11.07	0.39	6.62	8.65	-2.03
Jun	16.50	7.97	9.52	0.37	5.53	7.09	-2.06
Jul	14.70	6.22	7.80	0.35	3.78	5.36	-2.09
Aug	15.00	6.15	8.08	0.34	3.71	5.64	-2.10
Sep	14.30	5.44	7.38	0.34	3.00	4.94	-2.10
Oct	14.20	4.27	7.28	0.34	1.83	4.84	-2.10
Nov	22.00	12.91	14.62	0.39	10.45	12.16	-2.07
Dec	19.80	11.59	12.42	0.39	9.13	9.96	-2.07
Jan 2004	18.30	9.93	10.92	0.39	7.47	8.46	-2.07
Feb	18.40	9.88	10.99	0.39	7.42	8.53	-2.07
Mar	19.90	10.97	12.58	0.38	8.50	10.11	-2.08
Apr	19.60	9.90	12.23	0.39	7.43	9.77	-2.08
May	19.90	10.54	12.63	0.38	8.08	10.16	-2.08
Jun	21.10	12.51	13.97	0.34	10.03	11.49	-2.14
Jul	19.60	11.18	12.54	0.32	8.69	10.05	-2.17
Aug	21.00	13.14	13.94	0.32	10.65	11.45	-2.17
Sep	25.40	18.34	18.34		15.85	15.85	
Oct	31.20	23.94	23.94		21.44	21.44	
Nov	23.00	13.48	15.47	0.38	10.97	12.96	-2.13
Dec	20.40	11.09	12.87	0.38	8.58	10.36	-2.13
Jan 2005	19.50	9.91	11.97	0.38	7.40	9.46	-2.13
Feb	19.00	9.27	11.45	0.38	6.76	8.94	-2.13
Mar	19.40	9.19	11.97	0.37	6.69	9.47	-2.13
Apr	20.50	9.09	13.08	0.37	6.59	10.58	-2.13
May	20.60	10.19	13.27	0.37	7.69	10.77	-2.14
Jun	19.10	10.43	12.06	0.33	7.94	9.57	-2.16
Jul	17.50	9.04	10.44	0.32	6.55	7.95	-2.17
Aug	16.80	7.39	9.74	0.32	4.90	7.25	-2.17

**Oranges: Average Prices and Equivalent Returns, California  
November 2002 - August 2005**

State, Month, and Year	F.O.B. Packed	Equiv. P.H.D.			Equiv. On-Tree		
		All	Fresh	Proc.	All	Fresh	Proc.
CA							
Navels and Miscellaneous							
	<i>Dollars per box</i>	<i>Dollars per box</i>	<i>Dollars per box</i>	<i>Dollars per box</i>	<i>Dollars per box</i>	<i>Dollars per box</i>	<i>Dollars per box</i>
Nov 2002	20.70	11.95	13.46	0.40	9.54	11.05	-2.01
Dec	17.90	9.84	10.66	0.40	7.43	8.25	-2.01
Jan 2003	15.30	6.95	8.06	0.40	4.54	5.65	-2.01
Feb	13.80	5.39	6.56	0.40	2.98	4.15	-2.01
Mar	16.00	6.82	8.76	0.40	4.41	6.35	-2.01
Apr	18.20	8.48	10.96	0.40	6.07	8.55	-2.01
May	19.60	9.44	12.36	0.40	7.03	9.95	-2.01
Jun	22.40	10.94	15.16	0.40	8.53	12.75	-2.01
Jul	20.10	8.71	12.86	0.40	6.30	10.45	-2.01
Nov	22.00	12.91	14.62	0.39	10.45	12.16	-2.07
Dec	19.80	11.59	12.42	0.39	9.13	9.96	-2.07
Jan 2004	18.30	9.93	10.92	0.39	7.47	8.46	-2.07
Feb	18.40	9.88	11.02	0.39	7.42	8.56	-2.07
Mar	20.00	10.96	12.62	0.39	8.50	10.16	-2.07
Apr	19.80	9.86	12.42	0.39	7.40	9.96	-2.07
May	20.40	10.26	13.02	0.39	7.80	10.56	-2.07
Jun	22.90	13.84	15.52	0.39	11.38	13.06	-2.07
Oct	32.10	24.57	24.57		22.06	22.06	
Nov	23.00	13.48	15.47	0.38	10.97	12.96	-2.13
Dec	20.40	11.09	12.87	0.38	8.58	10.36	-2.13
Jan 2005	19.50	9.91	11.97	0.38	7.40	9.46	-2.13
Feb	18.90	9.14	11.37	0.38	6.63	8.86	-2.13
Mar	19.10	8.60	11.57	0.38	6.09	9.06	-2.13
Apr	20.50	8.52	12.97	0.38	6.01	10.46	-2.13
May	21.40	9.37	13.87	0.38	6.86	11.36	-2.13
Jun	21.30	9.31	13.77	0.38	6.80	11.26	-2.13
CA							
Valencias							
Feb 2003	17.00	10.08	10.08	0.34	7.64	7.64	-2.10
Mar	16.50	8.66	9.58	0.34	6.22	7.14	-2.10
Apr	17.30	9.75	10.38	0.34	7.31	7.94	-2.10
May	16.00	8.29	9.08	0.34	5.85	6.64	-2.10
Jun	14.50	6.70	7.58	0.34	4.26	5.14	-2.10
Jul	14.30	5.97	7.38	0.34	3.53	4.94	-2.10
Aug	15.00	6.15	8.08	0.34	3.71	5.64	-2.10
Sep	14.30	5.44	7.38	0.34	3.00	4.94	-2.10
Oct	14.20	4.27	7.28	0.34	1.83	4.84	-2.10
Feb 2004	17.10	10.04	10.04		7.55	7.55	
Mar	19.30	11.05	12.24	0.32	8.56	9.75	-2.17
Apr	18.30	10.15	11.24	0.32	7.66	8.75	-2.17
May	19.00	11.17	11.94	0.32	8.68	9.45	-2.17
Jun	20.30	11.88	13.24	0.32	9.39	10.75	-2.17
Jul	19.60	11.18	12.54	0.32	8.69	10.05	-2.17
Aug	21.00	13.14	13.94	0.32	10.65	11.45	-2.17
Sep	25.40	18.34	18.34		15.85	15.85	
Oct	30.50	23.44	23.44		20.95	20.95	
Feb 2005	20.50	13.44	13.44		10.95	10.95	
Mar	20.60	11.98	13.54	0.32	9.49	11.05	-2.17
Apr	20.50	11.47	13.44	0.32	8.98	10.95	-2.17
May	19.60	11.56	12.54	0.32	9.07	10.05	-2.17
Jun	19.00	10.53	11.94	0.32	8.04	9.45	-2.17
Jul	17.50	9.04	10.44	0.32	6.55	7.95	-2.17
Aug	16.80	7.39	9.74	0.32	4.90	7.25	-2.17

**Oranges: Average Prices and Equivalent Returns, Florida  
October 2002 - June 2005**

State, Month, and Year	F.O.B. Packed	Equiv. P.H.D.			Equiv. On-Tree		
		All	Fresh	Proc.	All	Fresh	Proc.
FL		All Oranges					
	<i>Dollars per box</i>	<i>Dollars per box</i>	<i>Dollars per box</i>	<i>Dollars per box</i>	<i>Dollars per box</i>	<i>Dollars per box</i>	<i>Dollars per box</i>
Oct 2002	17.70	7.21	10.10	3.88	5.03	7.95	1.68
Nov	15.60	4.74	8.00	4.49	2.54	5.85	2.29
Dec	15.60	4.78	8.00	4.57	2.58	5.85	2.37
Jan 2003	13.50	4.74	5.90	4.70	2.54	3.75	2.50
Feb	14.00	4.85	6.40	4.78	2.65	4.23	2.58
Mar	15.10	6.09	7.50	6.04	3.89	5.30	3.84
Apr	13.50	6.07	5.90	6.07	3.87	3.70	3.87
May	13.50	6.05	5.90	6.05	3.85	3.70	3.85
Jun	20.00	6.29	12.40	5.94	4.09	10.20	3.74
Oct	16.80	5.96	8.65	3.18	3.83	6.45	1.13
Nov	15.50	4.18	7.35	3.94	2.12	5.15	1.89
Dec	14.70	4.21	6.55	4.08	2.15	4.35	2.03
Jan 2004	13.60	4.19	5.45	4.16	2.14	3.25	2.11
Feb	12.80	4.25	4.64	4.24	2.19	2.44	2.18
Mar	13.00	5.73	4.84	5.76	3.59	2.64	3.62
Apr	12.70	5.83	4.55	5.87	3.68	2.35	3.72
May	12.60	5.82	4.45	5.86	3.67	2.25	3.71
Jun	14.90	6.03	6.75	6.00	3.88	4.55	3.85
Nov	19.60	4.86	11.00	2.96	2.61	8.60	0.76
Dec	19.50	4.39	10.90	3.98	2.18	8.50	1.78
Jan 2005	17.40	4.73	8.80	4.59	2.53	6.40	2.39
Feb	15.60	5.05	7.00	5.00	2.85	4.60	2.80
Mar	16.00	6.20	7.35	6.12	3.96	4.95	3.89
Apr	16.00	6.48	7.40	6.45	4.23	5.00	4.20
May	17.50	6.72	8.90	6.65	4.46	6.50	4.40
Jun	19.00	6.95	10.40	6.80	4.69	8.00	4.55



**Oranges: Average Prices and Equivalent Returns, Florida  
October 2002 - June 2005**

State, Month, and Year	F.O.B. Packed	Equiv. P.H.D.			Equiv. On-Tree		
		All	Fresh	Proc.	All	Fresh	Proc.
FL							
Early and Midseason							
	<i>Dollars per box</i>	<i>Dollars per box</i>	<i>Dollars per box</i>	<i>Dollars per box</i>	<i>Dollars per box</i>	<i>Dollars per box</i>	<i>Dollars per box</i>
Oct 2002	17.70	7.21	10.10	3.88	5.03	7.95	1.68
Nov	15.60	4.74	8.00	4.49	2.54	5.85	2.29
Dec	15.60	4.78	8.00	4.57	2.58	5.85	2.37
Jan 2003	13.50	4.74	5.90	4.70	2.54	3.75	2.50
Feb	13.40	4.81	5.80	4.78	2.61	3.65	2.58
Oct	16.80	5.96	8.65	3.18	3.83	6.45	1.13
Nov	15.50	4.18	7.35	3.94	2.12	5.15	1.89
Dec	14.70	4.21	6.55	4.08	2.15	4.35	2.03
Jan 2004	13.50	4.74	5.90	4.70	2.54	3.75	2.50
Feb	12.00	4.24	3.85	4.24	2.18	1.65	2.19
Mar	12.30	5.75	4.15	5.76	3.70	1.95	3.71
Nov	19.60	4.86	11.00	2.96	2.61	8.60	0.76
Dec	19.50	4.39	10.90	3.98	2.18	8.50	1.78
Jan 2005	17.40	4.73	8.80	4.59	2.53	6.40	2.39
Feb	15.60	5.05	7.00	5.00	2.85	4.60	2.80
Mar	14.10	5.55	5.50	5.55	3.34	3.10	3.35
FL							
Valencias							
Feb 2003	15.00	5.02	7.40	4.80	2.82	5.20	2.60
Mar	15.10	6.09	7.50	6.04	3.89	5.30	3.84
Apr	13.50	6.07	5.90	6.07	3.87	3.70	3.87
May	13.50	6.05	5.90	6.05	3.85	3.70	3.85
Jun	20.00	6.29	12.40	5.94	4.09	10.20	3.74
Feb 2004	13.30	4.37	5.15	4.24	2.21	2.95	2.09
Mar	13.00	5.73	4.85	5.76	3.57	2.65	3.61
Apr	12.70	5.83	4.55	5.87	3.68	2.35	3.72
May	12.60	5.82	4.45	5.86	3.67	2.25	3.71
Jun	14.90	6.03	6.75	6.00	3.88	4.55	3.85
Mar 2005	16.10	6.39	7.50	6.30	4.13	5.10	4.05
Apr	16.00	6.48	7.40	6.45	4.23	5.00	4.20
May	17.50	6.72	8.90	6.65	4.46	6.50	4.40
Jun	19.00	6.95	10.40	6.80	4.69	8.00	4.55

**Oranges: Average Prices and Equivalent Returns, Texas  
October 2002 - May 2005**

State, Month, and Year	F.O.B. Packed	Equiv. P.H.D.			Equiv. On-Tree		
		All	Fresh	Proc.	All	Fresh	Proc.
TX							
	All Oranges						
	<i>Dollars per box</i>	<i>Dollars per box</i>	<i>Dollars per box</i>	<i>Dollars per box</i>	<i>Dollars per box</i>	<i>Dollars per box</i>	<i>Dollars per box</i>
Oct 2002	18.90	7.90	9.01	2.98	6.58	7.68	1.70
Nov	16.90	6.19	7.01	2.98	4.87	5.68	1.70
Dec	13.10	3.13	3.21	2.98	1.82	1.88	1.70
Jan 2003	11.80	2.32	1.91	2.98	1.01	0.58	1.70
Feb	12.90	3.00	3.01	2.98	1.69	1.68	1.70
Mar	13.30	3.34	3.41	2.98	2.02	2.08	1.70
Apr	19.40	7.67	9.51	2.98	6.35	8.18	1.70
May	20.00	9.65	10.11	2.98	8.32	8.78	1.70
Oct	23.80	12.47	13.71	2.55	11.13	12.36	1.25
Nov	16.50	5.70	6.41	2.55	4.36	5.06	1.25
Dec	15.00	4.18	4.91	2.55	2.84	3.56	1.25
Jan 2004	13.30	2.95	3.21	2.55	1.62	1.86	1.25
Feb	12.70	2.59	2.60	2.55	1.25	1.25	1.25
Mar	13.80	3.46	3.73	2.55	2.12	2.38	1.25
Apr	15.90	5.43	5.81	2.55	4.09	4.46	1.25
May	15.90	5.10	5.81	2.55	3.76	4.46	1.25
Oct	28.30	16.04	18.01	2.04	14.68	16.64	0.71
Nov	18.60	6.36	8.31	2.04	5.00	6.94	0.71
Dec	18.70	6.60	8.41	2.04	5.24	7.04	0.71
Jan 2005	19.30	6.81	9.01	2.04	5.45	7.64	0.71
Feb	18.60	6.10	8.31	2.04	4.74	6.94	0.71
Mar	18.90	6.77	8.62	2.04	5.41	7.25	0.71
Apr	19.20	6.74	8.87	2.04	5.38	7.50	0.71
May	14.60	3.66	4.31	2.04	2.30	2.94	0.71

**Oranges: Average Prices and Equivalent Returns, Texas  
October 2002 - May 2005**

State, Month, and Year	F.O.B. Packed	Equiv. P.H.D.			Equiv. On-Tree		
		All	Fresh	Proc.	All	Fresh	Proc.
TX							
Early and Midseason							
	<i>Dollars per box</i>	<i>Dollars per box</i>	<i>Dollars per box</i>	<i>Dollars per box</i>	<i>Dollars per box</i>	<i>Dollars per box</i>	<i>Dollars per box</i>
Oct 2002	18.90	7.90	9.01	2.98	6.58	7.68	1.70
Nov	16.90	6.19	7.01	2.98	4.87	5.68	1.70
Dec	13.10	3.13	3.21	2.98	1.82	1.88	1.70
Jan 2003	11.80	2.32	1.91	2.98	1.01	0.58	1.70
Feb	12.90	3.00	3.01	2.98	1.69	1.68	1.70
Mar	13.30	3.34	3.41	2.98	2.02	2.08	1.70
Apr							
Oct	23.80	12.47	13.71	2.55	11.13	12.36	1.25
Nov	16.50	5.70	6.41	2.55	4.36	5.06	1.25
Dec	15.00	4.18	4.91	2.55	2.84	3.56	1.25
Jan 2004	13.30	2.95	3.21	2.55	1.62	1.86	1.25
Feb	12.60	2.52	2.51	2.55	1.19	1.16	1.25
Mar	12.20	2.12	2.11	2.55	0.77	0.76	1.25
Oct	28.30	16.04	18.01	2.04	14.68	16.64	0.71
Nov	18.60	6.36	8.31	2.04	5.00	6.94	0.71
Dec	18.70	6.60	8.41	2.04	5.24	7.04	0.71
Jan 2005	19.30	6.81	9.01	2.04	5.45	7.64	0.71
Feb	18.60	6.10	8.31	2.04	4.74	6.94	0.71
Mar	18.90	7.02	8.61	2.04	5.66	7.24	0.71
Apr	18.10	6.61	7.81	2.04	5.25	6.44	0.71
TX							
Valencias							
Feb 2003	13.30	3.01	3.41	2.98	1.73	2.08	1.70
Mar	13.30	3.34	3.41	2.98	2.02	2.08	1.70
Apr	19.40	7.67	9.51	2.98	6.35	8.18	1.70
May	20.00	9.65	10.11	2.98	8.32	8.78	1.70
Feb 2004	15.50	3.98	5.41	2.55	2.66	4.06	1.25
Mar	15.50	4.36	5.41	2.55	3.03	4.06	1.25
Apr	15.90	5.43	5.81	2.55	4.09	4.46	1.25
May	15.90	5.10	5.81	2.55	3.76	4.46	1.25
Mar 2005	19.00	5.10	8.71	2.04	3.75	7.34	0.71
Apr	19.60	6.78	9.31	2.04	5.43	7.94	0.71
May	14.60	3.66	4.31	2.04	2.30	2.94	0.71

**Grapefruit: Average Prices and Equivalent Returns, United States  
September 2002 - August 2005**

State, Month, and Year	F.O.B. Packed	Equiv. P.H.D.			Equiv. On-Tree		
		All	Fresh	Proc.	All	Fresh	Proc.
US		All Grapefruit					
	<i>Dollars per box</i>	<i>Dollars per box</i>	<i>Dollars per box</i>	<i>Dollars per box</i>	<i>Dollars per box</i>	<i>Dollars per box</i>	<i>Dollars per box</i>
Sep 2002	14.60	7.45	8.35	-0.25	5.23	6.13	-2.47
Oct	17.50	7.76	9.40	2.88	5.69	7.50	0.34
Nov	15.80	5.78	7.55	2.33	3.78	5.70	-0.01
Dec	15.00	4.92	6.91	2.68	2.77	5.01	0.23
Jan 2003	15.00	4.70	6.93	2.67	2.55	5.05	0.29
Feb	15.20	4.34	6.99	2.62	2.13	5.10	0.20
Mar	15.30	4.05	7.06	2.68	1.79	5.18	0.25
Apr	15.70	4.25	8.01	2.64	2.00	6.04	0.28
May	19.10	8.27	12.26	2.17	6.02	10.13	-0.27
Jun	22.00	13.47	15.62	-0.26	11.21	13.36	-2.52
Jul	19.50	11.09	13.12	-0.26	8.83	10.86	-2.52
Aug	18.40	9.29	12.02	-0.26	7.03	9.76	-2.52
Sep	24.50	16.11	18.12	-0.26	13.85	15.86	-2.52
Oct	19.60	13.75	17.77	2.56	13.46	17.44	2.39
Nov	16.80	10.66	14.78	2.70	10.38	14.43	2.57
Dec	16.20	9.56	13.88	2.63	9.26	13.47	2.51
Jan 2004	16.10	8.47	13.80	2.65	8.20	13.37	2.54
Feb	16.30	7.83	14.65	2.58	7.68	14.40	2.51
Mar	17.20	6.87	15.92	2.71	6.77	15.74	2.64
Apr	16.80	5.72	13.98	2.74	5.47	13.42	2.60
May	18.10	7.65	14.42	2.49	6.98	13.22	2.22
Jun	20.00	11.66	13.50	-0.27	9.36	11.20	-2.57
Jul	19.20	10.85	12.70	-0.27	8.55	10.40	-2.57
Aug	19.60	10.33	13.10	-0.27	8.03	10.80	-2.57
Sep	26.10	17.77	19.60	-0.27	15.47	17.30	-2.57
Oct	27.10	16.21	19.67	4.01	13.83	17.38	1.33
Nov	30.80	18.37	22.50	4.96	16.08	20.32	2.27
Dec	29.70	16.97	21.27	6.60	14.72	19.15	4.03
Jan 2005	30.60	16.57	22.19	6.42	14.40	20.08	4.14
Feb	29.90	14.70	21.37	6.74	12.52	19.29	4.45
Mar	29.20	12.78	20.74	6.12	10.58	18.67	3.80
Apr	30.10	12.76	21.90	4.14	10.69	19.84	2.05
May	29.30	14.16	21.57	1.93	12.28	19.52	0.34
Jun	30.10	20.43	23.46	-0.28	18.06	21.09	-2.65
Jul	28.50	18.99	21.86	-0.28	16.62	19.49	-2.65
Aug	26.70	15.87	20.06	-0.28	13.50	17.69	-2.65

**Grapefruit: Average Prices and Equivalent Returns, Arizona  
November 2002 - May 2005**

State, Month, and Year	F.O.B. Packed	Equiv. P.H.D.			Equiv. On-Tree		
		All	Fresh	Proc.	All	Fresh	Proc.
AZ	All Grapefruit						
	<i>Dollars per box</i>	<i>Dollars per box</i>	<i>Dollars per box</i>	<i>Dollars per box</i>	<i>Dollars per box</i>	<i>Dollars per box</i>	<i>Dollars per box</i>
Nov 2002	13.60	7.22	7.22		4.95	4.95	
Dec 2002	13.70	7.32	7.32		5.05	5.05	
Jan 2003	12.70	6.32	6.32		4.05	4.05	
Feb 2003	13.30	6.92	6.92		4.65	4.65	
Mar 2003	12.90	6.52	6.52		4.25	4.25	
Apr 2003	14.90	8.52	8.52		6.25	6.25	
May 2003	15.30	7.86	8.92	-0.26	5.59	6.65	-2.53
Oct 2003	19.50	12.99	12.99		10.67	10.67	
Nov 2003	14.20	7.69	7.69		5.37	5.37	
Dec 2003	15.20	8.69	8.69		6.37	6.37	
Jan 2004	16.00	9.49	9.49		7.17	7.17	
Feb 2004	15.30	8.79	8.79		6.47	6.47	
Mar 2004	14.80	8.29	8.29		5.97	5.97	
Apr 2004	15.40	8.89	8.89		6.57	6.57	
May 2004	17.10	10.59	10.59		8.27	8.27	
Dec 2004	27.10	20.46	20.46		18.09	18.09	
Jan 2005	21.50	14.86	14.86		12.49	12.49	
Feb 2005	15.20	8.56	8.56		6.19	6.19	
Mar 2005	21.30	14.66	14.66		12.29	12.29	
Apr 2005	22.30	15.66	15.66		13.29	13.29	
May 2005	22.70	16.06	16.06		13.69	13.69	

**Grapefruit: Average Prices and Equivalent Returns, California  
September 2002 - August 2005**

State, Month, and Year	F.O.B. Packed	Equiv. P.H.D.			Equiv. On-Tree		
		All	Fresh	Proc.	All	Fresh	Proc.
CA		All Grapefruit					
	<i>Dollars per box</i>	<i>Dollars per box</i>	<i>Dollars per box</i>	<i>Dollars per box</i>	<i>Dollars per box</i>	<i>Dollars per box</i>	<i>Dollars per box</i>
Sep 2002	14.60	7.45	8.35	-0.25	5.23	6.13	-2.47
Oct	15.10	7.48	8.85	-0.25	5.26	6.63	-2.47
Nov	20.90	12.21	14.52	-0.26	9.95	12.26	-2.52
Dec	20.80	13.37	14.42	-0.26	11.11	12.16	-2.52
Jan 2003	18.20	10.69	11.82	-0.26	8.43	9.56	-2.52
Feb	16.80	9.89	10.42	-0.26	7.63	8.16	-2.52
Mar	14.00	7.34	7.62	-0.26	5.08	5.36	-2.52
Apr	16.90	10.19	10.52	-0.26	7.93	8.26	-2.52
May	20.30	12.25	13.92	-0.26	9.99	11.66	-2.52
Jun	22.00	13.47	15.62	-0.26	11.21	13.36	-2.52
Jul	19.50	11.09	13.12	-0.26	8.83	10.86	-2.52
Aug	18.40	9.29	12.02	-0.26	7.03	9.76	-2.52
Sep	24.50	16.11	18.12	-0.26	13.85	15.86	-2.52
Oct	21.20	12.44	14.82	-0.26	10.18	12.56	-2.52
Nov	20.20	11.64	13.70	-0.27	9.34	11.40	-2.57
Dec	18.80	11.49	12.30	-0.27	9.19	10.00	-2.57
Jan 2004	19.00	11.32	12.50	-0.27	9.02	10.20	-2.57
Feb	17.60	10.76	11.10	-0.27	8.46	8.80	-2.57
Mar	14.50	7.54	8.00	-0.27	5.24	5.70	-2.57
Apr	16.80	9.99	10.30	-0.27	7.69	8.00	-2.57
May	19.90	11.82	13.40	-0.27	9.52	11.10	-2.57
Jun	20.00	11.66	13.50	-0.27	9.36	11.20	-2.57
Jul	19.20	10.85	12.70	-0.27	8.55	10.40	-2.57
Aug	19.60	10.33	13.10	-0.27	8.03	10.80	-2.57
Nov	24.80	15.45	18.16	-0.28	13.08	15.79	-2.65
Dec	22.30	14.72	15.66	-0.28	12.35	13.29	-2.65
Jan 2005	23.70	15.50	17.06	-0.28	13.13	14.69	-2.65
Feb	22.60	15.47	15.96	-0.28	13.10	13.59	-2.65
Mar	21.30	13.90	14.66	-0.28	11.53	12.29	-2.65
Apr	29.90	22.67	23.26	-0.28	20.30	20.89	-2.65
May	30.20	20.95	23.56	-0.28	18.58	21.19	-2.65
Jun	30.10	20.43	23.46	-0.28	18.06	21.09	-2.65
Jul	28.50	18.99	21.86	-0.28	16.62	19.49	-2.65
Aug	26.70	15.87	20.06	-0.28	13.50	17.69	-2.65

**Grapefruit: Average Prices and Equivalent Returns, Florida  
October 2002 - May 2005**

State, Month, and Year	F.O.B. Packed	Equiv. P.H.D.			Equiv. On-Tree		
		All	Fresh	Proc.	All	Fresh	Proc.
FL		All Grapefruit					
	<i>Dollars per box</i>	<i>Dollars per box</i>	<i>Dollars per box</i>	<i>Dollars per box</i>	<i>Dollars per box</i>	<i>Dollars per box</i>	<i>Dollars per box</i>
Oct 2002	17.00	7.54	9.12	3.06	5.37	7.12	0.40
Nov	15.40	5.83	7.49	2.74	3.61	5.49	0.11
Dec	14.90	4.95	7.01	2.88	2.67	5.01	0.30
Jan 2003	15.00	4.71	7.09	2.89	2.42	5.09	0.37
Feb	15.40	4.51	7.45	2.77	2.18	5.45	0.24
Mar	15.60	4.18	7.63	2.82	1.80	5.63	0.29
Apr	15.20	3.76	7.26	2.84	1.37	5.26	0.35
May	15.70	3.67	7.78	2.72	1.24	5.78	0.18
Oct	19.10	9.04	11.52	2.85	6.98	9.58	0.47
Nov	16.40	6.60	8.83	2.92	4.49	6.89	0.55
Dec	16.00	6.02	8.43	2.85	3.90	6.49	0.49
Jan 2004	16.10	5.48	8.51	2.83	3.32	6.57	0.49
Feb	16.60	5.27	9.06	2.70	3.10	7.13	0.38
Mar	17.50	4.95	9.94	2.83	2.74	8.00	0.51
Apr	17.10	4.36	9.56	2.95	2.12	7.62	0.63
May	16.30	4.60	8.67	2.87	2.38	6.73	0.52
Oct	30.60	17.54	22.37	6.02	15.00	19.99	3.13
Nov	31.00	18.49	22.80	6.12	15.95	20.42	3.14
Dec	29.40	17.15	21.20	8.33	14.58	18.83	5.34
Jan 2005	30.60	17.88	22.38	9.81	15.30	20.01	6.86
Feb	29.50	16.12	21.31	9.98	13.48	18.93	7.03
Mar	29.70	14.21	21.57	8.59	11.54	19.20	5.69
Apr	30.40	13.15	22.26	6.79	10.46	19.89	3.88
May	26.90	13.22	18.78	7.40	10.48	16.41	4.26

**Grapefruit: Average Prices and Equivalent Returns, Florida  
October 2002 - April 2005**

State, Month, and Year	F.O.B. Packed	Equiv. P.H.D.			Equiv. On-Tree		
		All	Fresh	Proc.	All	Fresh	Proc.
FL							
White Seedless							
	<i>Dollars per box</i>	<i>Dollars per box</i>	<i>Dollars per box</i>	<i>Dollars per box</i>	<i>Dollars per box</i>	<i>Dollars per box</i>	<i>Dollars per box</i>
Oct 2002	18.80	7.93	10.67	2.90	5.80	8.67	0.53
Nov	18.10	6.29	9.97	2.47	4.10	7.97	0.10
Dec	17.80	4.70	9.67	2.74	2.44	7.67	0.37
Jan 2003	18.00	4.36	9.87	2.79	2.07	7.87	0.42
Feb	17.80	4.12	9.67	2.72	1.82	7.67	0.35
Mar	16.70	3.48	8.57	2.68	1.16	6.57	0.31
Apr	16.70	3.12	8.57	2.79	0.77	6.57	0.42
May	16.80	3.01	8.67	2.68	0.66	6.67	0.31
Oct	19.60	8.43	12.00	2.69	6.39	10.10	0.44
Nov	16.90	5.91	9.30	2.70	3.83	7.40	0.45
Dec	16.50	5.33	8.90	2.82	3.23	7.00	0.57
Jan 2004	16.40	4.57	8.80	2.59	2.43	6.90	0.34
Feb	16.50	4.03	8.90	2.54	1.86	7.00	0.29
Mar	17.60	3.55	10.00	2.68	1.34	8.10	0.43
Apr	17.60	3.06	10.00	2.78	0.82	8.10	0.53
May	15.30	2.89	7.70	2.66	0.65	5.80	0.41
Oct	32.70	16.41	24.22	5.70	13.92	21.82	3.09
Nov	32.80	18.16	24.32	5.70	15.69	21.92	3.09
Dec	32.40	18.11	23.92	8.90	15.63	21.52	6.29
Jan 2005	32.90	17.71	24.42	9.30	15.22	22.02	6.69
Feb	30.40	13.65	21.92	9.10	11.11	19.52	6.49
Mar	31.20	9.98	22.72	8.40	7.40	20.32	5.79
Apr	30.30	8.67	21.82	7.80	6.07	19.42	5.19

**Grapefruit: Average Prices and Equivalent Returns, Florida  
October 2002 - May 2005**

State, Month, and Year	F.O.B. Packed	Equiv. P.H.D.			Equiv. On-Tree		
		All	Fresh	Proc.	All	Fresh	Proc.
FL							
Colored Seedless							
	<i>Dollars per box</i>	<i>Dollars per box</i>	<i>Dollars per box</i>	<i>Dollars per box</i>	<i>Dollars per box</i>	<i>Dollars per box</i>	<i>Dollars per box</i>
Oct 2002	16.70	7.45	8.83	3.11	5.27	6.83	0.36
Nov	14.80	5.69	6.93	2.87	3.46	4.93	0.12
Dec	14.30	5.07	6.43	3.00	2.78	4.43	0.25
Jan 2003	14.20	4.98	6.33	3.04	2.67	4.33	0.29
Feb	14.60	4.85	6.73	2.85	2.49	4.73	0.10
Mar	15.20	4.87	7.33	3.02	2.44	5.33	0.27
Apr	14.90	4.56	7.03	2.95	2.11	5.03	0.20
May	15.50	4.31	7.63	2.77	1.79	5.63	0.02
Oct	19.00	9.19	11.42	2.90	7.11	9.47	0.48
Nov	16.30	6.80	8.72	3.02	4.70	6.77	0.60
Dec	15.90	6.26	8.32	2.87	4.13	6.37	0.45
Jan 2004	16.00	5.94	8.42	3.02	3.77	6.47	0.60
Feb	16.70	6.29	9.12	2.93	4.12	7.17	0.51
Mar	17.50	6.24	9.92	3.06	4.04	7.97	0.64
Apr	17.10	5.53	9.52	3.18	3.28	7.57	0.76
May	16.30	5.33	8.72	3.01	3.10	6.77	0.59
Oct	29.80	18.09	21.68	6.30	15.55	19.31	3.16
Nov	30.50	18.58	22.38	6.30	16.03	20.01	3.16
Dec	28.60	16.86	20.48	8.10	14.26	18.11	4.96
Jan 2005	29.80	17.96	21.68	10.10	15.34	19.31	6.96
Feb	29.30	17.02	21.18	10.50	14.35	18.81	7.36
Mar	29.60	15.89	21.48	8.75	13.18	19.11	5.61
Apr	30.40	14.86	22.28	6.00	12.14	19.91	2.86
May	26.90	13.22	18.78	7.40	10.48	16.41	4.26



**Grapefruit: Average Prices and Equivalent Returns, Texas  
October 2002 - May 2005**

State, Month, and Year	F.O.B. Packed	Equiv. P.H.D.			Equiv. On-Tree		
		All	Fresh	Proc.	All	Fresh	Proc.
TX	All Grapefruit						
	<i>Dollars per box</i>	<i>Dollars per box</i>	<i>Dollars per box</i>	<i>Dollars per box</i>	<i>Dollars per box</i>	<i>Dollars per box</i>	<i>Dollars per box</i>
Oct 2002	21.30	9.54	11.51	0.80	8.38	10.34	-0.32
Nov	16.20	4.59	6.41	0.80	3.44	5.24	-0.32
Dec	13.90	2.92	4.11	0.80	1.77	2.94	-0.32
Jan 2003	13.80	2.79	4.01	0.80	1.64	2.84	-0.32
Feb	13.40	2.31	3.61	0.80	1.16	2.44	-0.32
Mar	13.90	2.49	4.11	0.80	1.35	2.94	-0.32
Apr	15.30	2.61	5.51	0.80	1.47	4.34	-0.32
May	15.50	4.68	5.71	0.80	3.52	4.54	-0.32
Oct	21.80	9.71	11.81	0.80	8.55	10.64	-0.32
Nov	17.10	5.90	7.11	0.80	4.74	5.94	-0.32
Dec	16.10	4.81	6.11	0.80	3.66	4.94	-0.32
Jan 2004	14.60	3.53	4.61	0.80	2.37	3.44	-0.32
Feb	14.30	3.04	4.31	0.80	1.89	3.14	-0.32
Mar	15.30	2.89	5.31	0.80	1.75	4.14	-0.32
Apr	16.00	2.95	6.01	1.20	1.81	4.84	0.08
May	17.80	2.52	7.81	1.20	1.39	6.64	0.08
Oct	43.30	29.36	33.11	1.20	28.17	31.92	0.06
Nov	35.10	20.18	24.91	1.20	19.00	23.72	0.06
Dec	34.20	17.00	24.01	1.20	15.83	22.82	0.06
Jan 2005	35.80	14.12	25.61	1.20	12.95	24.42	0.06
Feb	34.60	11.65	24.41	1.20	10.48	23.22	0.06
Mar	32.10	9.44	21.91	1.20	8.28	20.72	0.06
Apr	30.00	7.68	19.81	1.20	6.52	18.62	0.06
May	28.80	7.74	18.61	1.20	6.58	17.42	0.06

**Lemons: Average Prices and Equivalent Returns, United States  
August 2002 - July 2005**

State, Month, and Year	F.O.B. Packed	Equiv. P.H.D.			Equiv. On-Tree		
		All	Fresh	Proc.	All	Fresh	Proc.
US							
	All Lemons						
	<i>Dollars per box</i>	<i>Dollars per box</i>	<i>Dollars per box</i>	<i>Dollars per box</i>	<i>Dollars per box</i>	<i>Dollars per box</i>	<i>Dollars per box</i>
Aug 2002	39.50	24.54	29.62	0.22	20.28	25.36	-4.04
Sep	39.10	22.69	29.18	0.22	18.43	24.92	-4.04
Oct	36.40	19.45	26.47	0.22	15.19	22.21	-4.04
Nov	31.90	13.69	22.04	0.22	9.43	17.78	-4.04
Dec	26.90	10.28	17.00	0.22	6.02	12.74	-4.04
Jan 2003	24.00	7.61	14.12	0.22	3.35	9.86	-4.04
Feb	19.70	4.95	9.82	0.22	0.69	5.56	-4.04
Mar	19.70	4.73	9.77	0.22	0.47	5.51	-4.04
Apr	26.20	8.86	16.30	0.22	4.60	12.04	-4.04
May	30.50	9.72	20.62	0.22	5.46	16.36	-4.04
Jun	32.40	10.03	22.52	0.22	5.77	18.26	-4.04
Jul	32.80	10.50	22.92	0.22	6.24	18.66	-4.04
Aug	32.30	17.21	22.42	0.22	12.95	18.16	-4.04
Sep	28.50	14.99	18.55	0.22	10.72	14.27	-4.04
Oct	25.60	12.65	15.60	0.22	8.36	11.31	-4.04
Nov	24.80	9.86	14.86	0.21	5.56	10.56	-4.08
Dec	23.60	8.12	13.61	0.21	3.83	9.32	-4.08
Jan 2004	22.80	6.93	12.81	0.21	2.64	8.52	-4.08
Feb	24.30	8.18	14.41	0.22	3.91	10.14	-4.06
Mar	28.40	11.63	18.52	0.22	7.37	14.26	-4.04
Apr	31.00	13.95	21.12	0.22	9.69	16.86	-4.04
May	31.70	16.63	21.82	0.22	12.37	17.56	-4.04
Jun	34.10	19.11	24.22	0.22	14.85	19.96	-4.04
Jul	35.60	18.87	25.72	0.22	14.61	21.46	-4.04
Aug	35.20	21.53	24.90	0.18	17.10	20.47	-4.25
Sep	34.60	20.72	24.31	0.18	16.29	19.88	-4.25
Oct	32.80	19.63	22.49	0.18	15.20	18.06	-4.25
Nov	31.20	13.75	20.92	0.18	9.32	16.49	-4.25
Dec	31.30	12.16	21.03	0.18	7.73	16.60	-4.25
Jan 2005	31.10	12.06	20.84	0.18	7.63	16.41	-4.25
Feb	30.30	12.20	19.96	0.18	7.77	15.53	-4.25
Mar	29.90	13.62	19.59	0.18	9.19	15.16	-4.25
Apr	32.60	16.61	22.30	0.18	12.18	17.87	-4.25
May	41.60	9.89	31.30	0.18	5.46	26.87	-4.25
Jun	39.80	24.51	29.50	0.18	20.08	25.07	-4.25
Jul	36.50	16.75	26.20	0.18	12.32	21.77	-4.25

**Lemons: Average Prices and Equivalent Returns, Arizona  
September 2002- March 2005**

State, Month, and Year	F.O.B. Packed	Equiv. P.H.D.			Equiv. On-Tree		
		All	Fresh	Proc.	All	Fresh	Proc.
AZ		All Lemons					
	<i>Dollars per box</i>	<i>Dollars per box</i>	<i>Dollars per box</i>	<i>Dollars per box</i>	<i>Dollars per box</i>	<i>Dollars per box</i>	<i>Dollars per box</i>
Sep 2002	37.50	23.44	27.60	0.22	19.18	23.34	-4.04
Oct	37.40	20.94	27.50	0.22	16.68	23.24	-4.04
Nov	32.40	12.80	22.50	0.22	8.54	18.24	-4.04
Dec	26.60	8.99	16.70	0.22	4.73	12.44	-4.04
Jan 2003	23.70	7.02	13.80	0.22	2.76	9.54	-4.04
Feb	19.20	3.29	9.30	0.22	-0.97	5.04	-4.04
Mar	18.60	2.51	8.70	0.22	-1.75	4.44	-4.04
Apr	19.80	2.50	9.90	0.22	-1.76	5.64	-4.04
Sep	28.80	18.70	18.70		14.35	14.35	
Oct	26.70	16.60	16.60		12.25	12.25	
Nov	24.60	9.84	14.50	0.20	5.49	10.15	-4.15
Dec	23.10	8.41	13.00	0.20	4.06	8.65	-4.15
Jan 2004	22.90	7.06	12.80	0.20	2.71	8.45	-4.15
Feb	22.60	5.61	12.50	0.20	1.26	8.15	-4.15
Sep	35.20	24.90	24.90		20.47	20.47	
Oct	33.20	22.90	22.90		18.47	18.47	
Nov	30.90	11.55	20.60	0.18	7.12	16.17	-4.25
Dec	30.60	9.84	20.30	0.18	5.41	15.87	-4.25
Jan 2005	29.90	9.32	19.60	0.18	4.89	15.17	-4.25
Feb	28.10	6.24	17.80	0.18	1.81	13.37	-4.25
Mar	27.40	8.08	17.10	0.18	3.65	12.67	-4.25

**Lemons: Average Prices and Equivalent Returns, California  
August 2002 - July 2005**

State, Month, and Year	F.O.B. Packed	Equiv. P.H.D.			Equiv. On-Tree		
		All	Fresh	Proc.	All	Fresh	Proc.
CA		All Lemons					
	<i>Dollars per box</i>	<i>Dollars per box</i>	<i>Dollars per box</i>	<i>Dollars per box</i>	<i>Dollars per box</i>	<i>Dollars per box</i>	<i>Dollars per box</i>
Aug 2002	39.50	24.54	29.62	0.22	20.28	25.36	-4.04
Sep	39.20	22.63	29.32	0.22	18.37	25.06	-4.04
Oct	36.00	18.98	26.12	0.22	14.72	21.86	-4.04
Nov	31.70	14.17	21.82	0.22	9.91	17.56	-4.04
Dec	27.00	10.89	17.12	0.22	6.63	12.86	-4.04
Jan 2003	24.10	7.81	14.22	0.22	3.55	9.96	-4.04
Feb	19.80	5.46	9.92	0.22	1.20	5.66	-4.04
Mar	19.70	4.91	9.82	0.22	0.65	5.56	-4.04
Apr	26.20	8.89	16.32	0.22	4.63	12.06	-4.04
May	30.50	9.72	20.62	0.22	5.46	16.36	-4.04
Jun	32.40	10.03	22.52	0.22	5.77	18.26	-4.04
Jul	32.80	10.50	22.92	0.22	6.24	18.66	-4.04
Aug	32.30	17.21	22.42	0.22	12.95	18.16	-4.04
Sep	28.40	14.43	18.52	0.22	10.17	14.26	-4.04
Oct	24.90	10.97	15.02	0.22	6.71	10.76	-4.04
Nov	25.00	9.87	15.12	0.22	5.61	10.86	-4.04
Dec	23.90	7.96	14.02	0.22	3.70	9.76	-4.04
Jan 2004	22.70	6.86	12.82	0.22	2.60	8.56	-4.04
Feb	24.60	8.73	14.72	0.22	4.47	10.46	-4.04
Mar	28.40	11.63	18.52	0.22	7.37	14.26	-4.04
Apr	31.00	13.95	21.12	0.22	9.69	16.86	-4.04
May	31.70	16.63	21.82	0.22	12.37	17.56	-4.04
Jun	34.10	19.11	24.22	0.22	14.85	19.96	-4.04
Jul	35.60	18.87	25.72	0.22	14.61	21.46	-4.04
Aug	35.20	21.53	24.90	0.18	17.10	20.47	-4.25
Sep	34.60	20.65	24.30	0.18	16.22	19.87	-4.25
Oct	32.60	18.41	22.30	0.18	13.98	17.87	-4.25
Nov	31.40	15.35	21.10	0.18	10.92	16.67	-4.25
Dec	31.70	13.70	21.40	0.18	9.27	16.97	-4.25
Jan 2005	31.50	13.08	21.20	0.18	8.65	16.77	-4.25
Feb	30.40	12.89	20.10	0.18	8.46	15.67	-4.25
Mar	29.90	13.66	19.60	0.18	9.23	15.17	-4.25
Apr	32.60	16.61	22.30	0.18	12.18	17.87	-4.25
May	41.60	9.89	31.30	0.18	5.46	26.87	-4.25
Jun	39.80	24.51	29.50	0.18	20.08	25.07	-4.25
Jul	36.50	16.75	26.20	0.18	12.32	21.77	-4.25

**Tangerines: Average Prices and Equivalent Returns, United States  
and Arizona, October 2002 - May 2005**

State, Month, and Year	F.O.B. Packed	Equiv. P.H.D.			Equiv. On-Tree		
		All	Fresh	Proc.	All	Fresh	Proc.
<b>US</b>							
	<b>Tangerines</b>						
	<i>Dollars per box</i>	<i>Dollars per box</i>	<i>Dollars per box</i>	<i>Dollars per box</i>	<i>Dollars per box</i>	<i>Dollars per box</i>	<i>Dollars per box</i>
Oct 2002	24.00	11.93	14.52	2.81	8.54	11.37	-1.44
Nov	27.10	13.90	17.95	3.23	10.53	14.89	-0.94
Dec	25.90	13.62	17.29	4.24	10.37	14.36	0.13
Jan 2003	26.60	15.02	18.17	2.37	11.96	15.31	-1.51
Feb	22.70	11.86	14.49	2.83	8.83	11.67	-0.92
Mar	22.90	12.11	14.85	2.46	9.16	12.08	-1.13
Apr	24.40	12.63	15.94	2.55	9.54	13.05	-1.16
May	26.30	15.61	17.85	2.69	12.60	14.97	-1.09
Oct	18.00	6.90	8.50	2.05	3.26	5.12	-2.35
Nov	24.80	10.77	15.37	2.65	7.21	12.22	-1.62
Dec	25.30	12.23	16.27	2.68	8.85	13.21	-1.46
Jan 2004	27.30	14.73	18.83	2.27	11.63	15.95	-1.50
Feb	22.90	10.98	14.31	2.10	7.89	11.40	-1.46
Mar	23.60	12.28	15.15	2.76	9.19	12.27	-1.01
Apr	27.60	14.89	18.34	3.51	11.52	15.23	-0.69
May	20.00	11.32	11.69	5.70	8.40	8.87	1.40
Oct	29.10	16.70	19.20	2.46	13.49	16.09	-1.32
Nov	29.60	15.66	20.01	2.38	12.46	16.96	-1.28
Dec	29.40	16.47	20.14	2.73	13.35	17.16	-0.95
Jan 2005	29.80	17.11	21.32	2.54	14.21	18.52	-0.66
Feb	28.50	16.43	19.89	4.36	13.50	17.06	1.08
Mar	29.00	16.62	20.00	4.81	13.57	17.07	1.37
Apr	32.90	20.03	23.40	6.40	16.86	20.38	2.66
May	28.00	18.75	20.80	0.30	16.21	18.26	-2.24
<b>AZ</b>							
	<b>Tangerines</b>						
Nov 2002	28.00	21.08	21.08		18.64	18.64	
Dec	28.40	19.86	21.48	-0.22	17.42	19.04	-2.66
Jan 2003	28.90	18.50	21.98	-0.22	16.06	19.54	-2.66
Feb	25.60	16.38	18.68	-0.22	13.94	16.24	-2.66
Mar	20.60	11.83	13.68	-0.22	9.39	11.24	-2.66
Apr	24.60	17.68	17.68		15.24	15.24	
Nov	28.60	21.54	21.54		19.05	19.05	
Dec	27.40	17.10	20.34	-0.24	14.61	17.85	-2.73
Jan 2004	26.80	14.06	19.74	-0.24	11.57	17.25	-2.73
Feb	21.80	8.10	14.74	-0.24	5.61	12.25	-2.73
Mar	20.70	9.37	13.64	-0.24	6.88	11.15	-2.73
Nov	30.40	23.20	23.20		20.66	20.66	
Dec	28.40	19.41	21.20	-0.26	16.87	18.66	-2.80
Jan 2005	26.00	14.28	18.80	-0.26	11.74	16.26	-2.80
Feb	26.10	12.91	18.90	-0.26	10.37	16.36	-2.80
Mar	17.10	8.13	9.90	-0.26	5.59	7.36	-2.80
Apr	11.80	4.60	4.60		2.06	2.06	

**Tangerines: Average Prices and Equivalent Returns, California  
and Florida, October 2002 - May 2005**

State, Month, and Year	F.O.B. Packed	Equiv. P.H.D.			Equiv. On-Tree		
		All	Fresh	Proc.	All	Fresh	Proc.
<b>CA</b>							
<b>Tangerines</b>							
	<i>Dollars per box</i>	<i>Dollars per box</i>	<i>Dollars per box</i>	<i>Dollars per box</i>	<i>Dollars per box</i>	<i>Dollars per box</i>	<i>Dollars per box</i>
Oct 2002	36.80	29.88	29.88		27.44	27.44	
Nov	30.70	21.86	23.78	0.72	19.42	21.34	-1.72
Dec	26.30	17.93	19.38	0.72	15.49	16.94	-1.72
Jan 2003	24.90	16.66	17.98	0.72	14.22	15.54	-1.72
Feb	22.40	13.38	15.48	0.34	10.94	13.04	-2.10
Mar	22.70	13.40	15.78	0.34	10.96	13.34	-2.10
Apr	25.40	14.89	18.48	0.34	12.45	16.04	-2.10
May	24.30	15.76	17.38	0.34	13.32	14.94	-2.10
Oct	42.80	35.88	35.88		33.44	33.44	
Nov	33.80	24.40	26.88	0.34	21.96	24.44	-2.10
Dec	29.90	20.11	22.98	0.34	17.67	20.54	-2.10
Jan 2004	27.00	17.64	20.08	0.34	15.20	17.64	-2.10
Feb	23.90	14.86	16.98	0.34	12.42	14.54	-2.10
Mar	24.80	15.54	17.88	0.34	13.10	15.44	-2.10
Apr	25.70	17.08	18.78	0.34	14.64	16.34	-2.10
May	5.20	-1.72	-1.72		-4.16	-4.16	
Oct	43.50	35.40	36.30	0.30	32.86	33.76	-2.24
Nov	37.10	25.84	29.90	0.30	23.30	27.36	-2.24
Dec	33.10	24.17	25.90	0.30	21.63	23.36	-2.24
Jan 2005	28.20	17.33	21.00	0.30	14.79	18.46	-2.24
Feb	28.20	17.52	21.00	0.30	14.98	18.46	-2.24
Mar	28.20	17.58	21.00	0.30	15.04	18.46	-2.24
Apr	31.50	23.19	24.30	0.30	20.65	21.76	-2.24
May	28.00	18.75	20.80	0.30	16.21	18.26	-2.24
<b>FL</b>							
<b>Tangerines</b>							
Oct 2002	23.20	11.10	13.60	2.81	7.66	10.40	-1.44
Nov	26.30	12.59	16.70	3.34	9.07	13.50	-0.91
Dec	25.40	11.75	15.80	4.55	8.17	12.60	0.30
Jan 2003	27.00	13.53	17.40	2.90	10.05	14.20	-1.35
Feb	22.60	10.24	13.00	3.80	6.73	9.80	-0.45
Mar	23.30	10.74	13.70	3.70	7.22	10.50	-0.55
Apr	23.80	11.21	14.20	3.50	7.71	11.00	-0.75
May	27.80	15.52	18.20	3.50	12.13	15.00	-0.75
Sep	23.00	10.73	13.25	2.10	7.25	10.00	-2.20
Oct	22.50	9.32	12.75	2.23	5.72	9.50	-2.07
Nov	23.70	9.61	13.95	2.69	5.96	10.70	-1.61
Dec	24.10	10.51	14.35	2.92	6.90	11.10	-1.38
Jan 2004	27.60	13.43	17.85	3.18	9.87	14.60	-1.12
Feb	22.60	10.26	12.85	3.60	6.72	9.60	-0.70
Mar	23.00	10.55	13.25	3.80	7.00	10.00	-0.50
Apr	28.00	14.52	18.25	3.70	11.00	15.00	-0.60
May	36.30	23.98	26.55	5.70	20.60	23.30	1.40
Oct	27.00	14.36	16.70	2.50	11.06	13.50	-1.30
Nov	27.50	13.21	17.20	2.63	9.84	14.00	-1.17
Dec	28.00	13.78	17.70	3.00	10.42	14.50	-0.80
Jan 2005	32.70	17.60	22.40	4.73	14.24	19.20	0.93
Feb	29.00	15.61	18.70	7.30	12.25	15.50	3.50
Mar	30.00	16.32	19.70	6.60	12.96	16.50	2.80
Apr	34.00	19.59	23.70	6.70	16.24	20.50	2.90

**Tangelos, and Temples: Average Prices and Equivalent Returns,  
Florida, November 2002 - March 2005**

State, Month, and Year	F.O.B. Packed	Equiv. P.H.D.			Equiv. On-Tree		
		All	Fresh	Proc.	All	Fresh	Proc.
FL							
Tangelos							
	<i>Dollars per box</i>	<i>Dollars per box</i>	<i>Dollars per box</i>	<i>Dollars per box</i>	<i>Dollars per box</i>	<i>Dollars per box</i>	<i>Dollars per box</i>
Nov 2002	17.20	5.01	8.60	2.50	2.73	6.35	0.20
Dec	15.60	4.57	7.00	3.20	2.29	4.75	0.90
Jan 2003	30.00	5.13	21.40	3.25	2.84	19.15	0.95
Nov	23.00	10.29	14.75	2.35	7.78	12.35	-0.35
Dec	22.00	10.11	13.75	2.60	7.61	11.35	-0.10
Jan 2004	35.00	11.59	26.75	2.60	9.00	24.35	-0.10
Feb	35.00	5.91	26.75	2.60	3.26	24.35	-0.10
Nov	20.50	6.85	11.30	2.40	4.13	8.55	-0.30
Dec	17.00	5.56	7.80	3.00	2.84	5.05	0.30
Jan 2005	20.00	4.70	10.80	3.20	1.99	8.05	0.50
Feb	19.00	4.21	9.80	3.80	1.51	7.05	1.10
FL							
Temples							
Jan 2003	14.50	4.82	5.90	4.10	2.54	3.65	1.80
Feb	13.70	4.32	5.10	4.15	2.03	2.85	1.85
Mar	17.00	3.38	8.40	2.75	1.08	6.15	0.45
Jan 2004	15.90	5.06	7.65	2.45	2.64	5.25	0.00
Feb	12.00	2.88	3.75	2.60	0.45	1.35	0.15
Mar	14.00	3.06	5.75	2.85	0.62	3.35	0.40
Apr	14.00	2.92	5.75	2.85	0.47	3.35	0.40
Jan 2005	17.00	6.46	7.80	3.15	3.77	5.05	0.60
Feb	15.20	4.86	6.00	4.45	2.26	3.25	1.90
Mar	15.50	4.55	6.30	4.25	1.97	3.55	1.70

**Oranges: Marketing Year Average Prices Received,  
Crop Years, 2002-03 and 2003-04**

State, Variety, and Utilization	2002-03			2003-04		
	F.O.B. Packed	Equiv. P.H.D.	Equiv. On-Tree	F.O.B. Packed	Equiv. P.H.D.	Equiv. On-Tree
	<i>Dollars per box</i>	<i>Dollars per box</i>	<i>Dollars per box</i>	<i>Dollars per box</i>	<i>Dollars per box</i>	<i>Dollars per box</i>
AZ						
Navel & Misc.		7.02	4.62		6.55	4.10
Fresh	16.70	9.46	7.06	17.10	9.72	7.27
Processing		0.40	-2.00		0.39	-2.06
Valencias		2.91	0.47		4.74	2.25
Fresh	10.00	3.08	0.64	11.80	4.74	2.25
Processing		0.34	-2.10			
All		4.66	2.23		5.90	3.43
Fresh	12.50	5.41	2.99	14.70	7.42	4.95
Processing		0.39	-2.03		0.39	-2.06
CA						
Navel & Misc.		7.98	5.57		10.66	8.20
Fresh	17.00	9.76	7.35	19.60	12.22	9.76
Processing		0.40	-2.01		0.39	-2.07
Valencias		6.53	4.09		12.95	10.46
Fresh	15.10	8.18	5.74	21.00	13.94	11.45
Processing		0.34	-2.10		0.32	-2.17
All		7.51	5.09		11.16	8.69
Fresh	16.40	9.26	6.84	19.90	12.61	10.15
Processing		0.38	-2.04		0.38	-2.08
FL						
Early/Mids.		4.82	2.62		4.26	2.20
Fresh	15.50	7.90	5.75	15.00	6.85	4.65
Processing		4.62	2.42		4.14	2.09
Valencias		6.05	3.85		5.79	3.64
Fresh	15.10	7.50	5.30	13.20	5.05	2.85
Processing		6.00	3.80		5.82	3.67
All		5.37	3.17		4.99	2.89
Fresh	15.40	7.78	5.61	14.20	6.07	3.87
Processing		5.25	3.05		4.95	2.85
TX						
Early/Mids.		4.00	2.68		4.21	2.87
Fresh	14.30	4.41	3.08	14.20	4.91	3.56
Processing		2.98	1.70		2.55	1.25
Valencias		5.89	4.57		4.82	3.49
Fresh	16.70	6.81	5.48	15.70	5.61	4.26
Processing		2.98	1.70		2.55	1.25
All		4.26	2.95		4.29	2.96
Fresh	14.70	4.77	3.44	15.10	5.01	3.66
Processing		2.98	1.70		2.55	1.25
US						
Early/Mids.						
Navels		5.56	3.32		5.58	3.44
Fresh	16.70	9.28	6.94	18.70	11.16	8.77
Processing		4.36	2.15		4.00	1.94
Valencias		6.12	3.88		6.31	4.14
Fresh	15.10	7.98	5.59	18.30	10.83	8.45
Processing		5.78	3.57		5.79	3.63
All		5.80	3.56		5.90	3.75
Fresh	16.20	8.87	6.52	18.60	11.07	8.68
Processing		5.00	2.79		4.85	2.74



**Oranges: Marketing Year Average Prices Received,  
Crop Year 2004-05**

State, Variety, and Utilization	2004-05		
	F.O.B. Packed	Equiv. P.H.D.	Equiv. On-Tree
	<i>Dollars per box</i>	<i>Dollars per box</i>	<i>Dollars per box</i>
AZ			
Navel & Misc.		7.88	5.37
Fresh	20.50	12.97	10.46
Processing		0.38	-2.13
Valencias		3.70	1.16
Fresh	10.90	3.70	1.16
Processing			
All		6.03	3.51
Fresh	15.00	7.68	5.15
Processing		0.38	-2.13
CA			
Navel & Misc.		9.83	7.32
Fresh	20.30	12.77	10.26
Processing		0.38	-2.13
Valencias		12.12	9.63
Fresh	21.00	13.94	11.45
Processing		0.32	-2.17
All		10.51	8.00
Fresh	20.50	13.15	10.64
Processing		0.37	-2.14
FL			
Early/Mids.		4.77	2.56
Fresh	18.60	10.00	7.60
Processing		4.46	2.26
Valencias		6.60	4.34
Fresh	16.80	8.20	5.80
Processing		6.53	4.28
All		5.63	3.40
Fresh	17.80	9.27	6.87
Processing		5.44	3.22
TX			
Early/Mids.		7.01	5.65
Fresh	19.40	9.11	7.74
Processing		2.04	0.71
Valencias		5.45	4.09
Fresh	17.50	7.21	5.84
Processing		2.04	0.71
All		6.77	5.41
Fresh	19.10	8.84	7.47
Processing		2.04	0.71
US			
Early/Mids.			
Navels		6.36	4.07
Fresh	20.00	12.29	9.83
Processing		4.03	1.80
Valencias		7.56	5.26
Fresh	20.10	12.72	10.26
Processing		6.35	4.09
All		6.87	4.57
Fresh	20.00	12.43	9.97
Processing		5.08	2.84

**Grapefruit: Marketing Year Average Prices Received,  
Crop Years, 2002-03 and 2003-04**

State, Variety, and Utilization	2002-03			2003-04		
	F.O.B. Packed	Equiv. P.H.D.	Equiv. On-Tree	F.O.B. Packed	Equiv. P.H.D.	Equiv. On-Tree
	<i>Dollars per box</i>	<i>Dollars per box</i>	<i>Dollars per box</i>	<i>Dollars per box</i>	<i>Dollars per box</i>	<i>Dollars per box</i>
AZ		7.73	5.46		9.69	7.37
Fresh	14.50	8.12	5.85	16.20	9.69	7.37
Processing		-0.26	-2.53			
CA		11.54	9.28		12.10	9.80
Fresh	19.60	13.22	10.96	20.30	13.80	11.50
Processing		-0.26	-2.52		-0.27	-2.57
FL						
Colored Seedless		5.26	2.93		6.34	4.17
Fresh	15.00	7.13	5.13	16.80	9.22	7.27
Processing		2.96	0.21		3.02	0.60
White Seedless <sup>1</sup>		4.07	1.77		4.06	1.88
Fresh	17.70	9.57	7.57	17.00	9.40	7.50
Processing		2.73	0.36		2.67	0.42
All		4.76	2.44		5.45	3.28
Fresh	15.50	7.63	5.63	16.80	9.26	7.32
Processing		2.83	0.29		2.84	0.51
TX		3.45	2.30		3.98	2.83
Fresh	15.10	5.31	4.14	16.00	6.01	4.84
Processing		0.80	-0.32		0.95	-0.17
US		5.24	3.03		5.91	3.84
Fresh	16.10	8.27	6.33	17.30	9.59	7.69
Processing		2.59	0.18		2.63	0.39

<sup>1</sup> Includes seedy type grapefruit.

**Grapefruit: Marketing Year Average Prices Received,  
Crop Year 2004-05**

State, Variety, and Utilization	2004-05		
	F.O.B. Packed	Equiv. P.H.D.	Equiv. On-Tree
	<i>Dollars per box</i>	<i>Dollars per box</i>	<i>Dollars per box</i>
AZ		15.16	12.79
Fresh	21.80	15.16	12.79
Processing			
CA		19.12	16.75
Fresh	28.00	21.36	18.99
Processing		-0.28	-2.65
FL			
Colored Seedless		16.91	14.27
Fresh	29.60	21.48	19.11
Processing		8.62	5.48
White Seedless <sup>1</sup>		14.48	11.95
Fresh	32.20	23.72	21.32
Processing		8.39	5.78
All		16.26	13.65
Fresh	30.10	21.89	19.51
Processing		8.53	5.59
TX		11.62	10.46
Fresh	33.40	23.21	22.02
Processing		1.20	0.06
US		15.59	13.40
Fresh	30.10	21.96	19.82
Processing		5.45	3.18

<sup>1</sup> Includes seedy type grapefruit.

**Lemons, Tangelos, Tangerines, and Temples: Marketing Year  
Average Prices Received, Crop Years, 2002-03 and 2003-04**

State, Variety, and Utilization	2002-03			2003-04		
	F.O.B. Packed	Equiv. P.H.D.	Equiv. On-Tree	F.O.B. Packed	Equiv. P.H.D.	Equiv. On-Tree
	<i>Dollars per box</i>	<i>Dollars per box</i>	<i>Dollars per box</i>	<i>Dollars per box</i>	<i>Dollars per box</i>	<i>Dollars per box</i>
Lemons						
AZ		9.80	5.54		9.70	5.35
Fresh	28.70	18.80	14.54	24.50	14.40	10.05
Processing		0.22	-4.04		0.20	-4.15
CA		10.92	6.66		13.37	9.11
Fresh	29.70	19.82	15.56	29.50	19.62	15.36
Processing		0.22	-4.04		0.22	-4.04
US		10.79	6.53		12.85	8.57
Fresh	29.60	19.71	15.45	28.80	18.88	14.61
Processing		0.22	-4.04		0.22	-4.06
Tangelos						
FL		4.89	2.60		10.02	7.48
Fresh	18.50	9.90	7.65	24.50	16.25	13.85
Processing		3.14	0.84		2.56	-0.14
Tangerines						
AZ		18.02	15.58		11.63	9.14
Fresh	27.50	20.58	18.14	24.40	17.34	14.85
Processing		-0.22	-2.66		-0.24	-2.73
CA		15.79	13.35		16.68	14.24
Fresh	24.90	17.98	15.54	25.80	18.88	16.44
Processing		0.43	-2.01		0.34	-2.10
FL		11.91	8.40		11.04	7.46
Fresh	24.90	15.30	12.10	24.50	14.75	11.50
Processing		3.53	-0.72		3.04	-1.26
US		13.23	10.06		12.19	8.90
Fresh	25.00	16.40	13.48	24.80	15.90	12.89
Processing		2.99	-0.95		2.57	-1.44
Temples						
FL		4.30	2.01		3.51	1.07
Fresh	14.50	5.90	3.65	14.30	6.05	3.65
Processing		3.81	1.51		2.69	0.24

**Lemons, Tangelos, Tangerines, and Temples: Marketing Year  
Average Prices Received, Crop Year, 2004-05**

State, Variety, and Utilization	2004-05		
	F.O.B. Packed	Equiv. P.H.D.	Equiv. On-Tree
	<i>Dollars per box</i>	<i>Dollars per box</i>	<i>Dollars per box</i>
Lemons			
AZ		11.51	7.08
Fresh	31.00	20.70	16.27
Processing		0.18	-4.25
CA		17.07	12.64
Fresh	34.30	24.00	19.57
Processing		0.18	-4.25
US		16.44	12.01
Fresh	34.00	23.70	19.27
Processing		0.18	-4.25
Tangelos			
FL		5.16	2.45
Fresh	18.40	9.20	6.45
Processing		3.27	0.57
Tangerines			
AZ		14.84	12.30
Fresh	25.70	18.50	15.96
Processing		-0.26	-2.80
CA		19.90	17.36
Fresh		23.20	20.66
Processing	30.40	0.30	-2.24
FL		15.38	12.02
Fresh		19.10	15.90
Processing	29.40	4.46	0.66
US		16.79	13.73
Fresh		20.49	17.55
Processing	29.60	3.39	-0.09
Temples			
FL		5.10	2.48
Fresh	16.00	6.80	4.05
Processing		4.27	1.72

**Florida Grapefruit: Marketing Year Average Prices Received by Region,  
Crop Years, 2002-03 and 2003-04**

Variety, Area, and Utilization	2002-03			2003-04		
	F.O.B. Packed	Equiv. P.H.D.	Equiv. On-Tree	F.O.B. Packed	Equiv. P.H.D.	Equiv. On-Tree
	<i>Dollars per box</i>	<i>Dollars per box</i>	<i>Dollars per box</i>	<i>Dollars per box</i>	<i>Dollars per box</i>	<i>Dollars per box</i>
White Seedless						
Interior		2.90	1.04		2.86	1.10
Fresh	14.60	6.80	4.80	16.40	8.90	7.00
Processing		2.73	0.88		2.67	0.92
Indian River		4.78	2.22		4.52	2.18
Fresh	18.00	9.85	7.85	17.00	9.40	7.50
Processing		2.73	-0.05		2.67	0.16
Colored Seedless						
Interior		4.54	2.32		4.58	2.60
Fresh	13.80	6.60	4.60	15.70	8.20	6.25
Processing		2.96	0.58		3.02	1.03
Indian River		5.71	3.30		7.32	5.05
Fresh	15.50	7.35	5.35	17.10	9.50	7.55
Processing		2.97	-0.13		3.02	0.12

**Florida Grapefruit: Marketing Year Average Prices Received by Region,  
Crop Year 2004-05**

Variety, Area, and Utilization	2004-05		
	F.O.B. Packed	Equiv. P.H.D.	Equiv. On-Tree
	<i>Dollars per box</i>	<i>Dollars per box</i>	<i>Dollars per box</i>
White Seedless			
Interior			13.02
Fresh		31.40	23.50
Processing			8.38
Indian River			17.11
Fresh		32.90	23.85
Processing			8.44
Colored Seedless			
Interior			16.14
Fresh		28.60	20.70
Processing			8.48
Indian River			18.08
Fresh		31.00	22.55
Processing			8.86

This page intentionally left blank.

## Marketing Seasons and Net Weight per Box

### Oranges:

Arizona	November 1 to August 31	75 pounds
California Navels	November 1 to June 15	75 pounds
California Valencias	March 15 to December 20	75 pounds
Florida Early and Midseason	October 1 to April 15	90 pounds
Florida Valencia	February 1 to July 31	90 pounds
Texas	September 25 to May 15	85 pounds

### Grapefruit:

Arizona	November 1 to July 31	67 pounds
California	November 1 to October 31	67 pounds
Florida	September 10 to July 31	85 pounds
Texas	October 1 to May 30	80 pounds

### Lemons:

Arizona	August 15 to March 1	76 pounds
California	August 1 to July 31	76 pounds

### Tangelos:

Florida	October 15 to April 15	90 pounds
---------	------------------------	-----------

### Tangerines:

Arizona	November 1 to February 1	75 pounds
California	November 1 to May 15	75 pounds
Florida	October 1 to April 1	95 pounds

### Temples:

Florida	December 1 to May 1	90 pounds
---------	---------------------	-----------



## Marketing Year Average Prices and Value of Production

State level marketing year average (MYA), or price per box, for fresh and processed sales are the weighted average of monthly sales that occur during a crop's marketing season, adjusted to the packinghouse-door level. The "all" sales MYA price is derived by dividing the "all" sales value by the "all" sales boxes. MYA prices at the U.S. level for commodities with different State box weights are computed as follows:

$$\text{Fresh Market MYAP} = \frac{\sum(\text{State Fresh Value} * \text{State Box Weight})}{\sum(\text{State Fresh Boxes} * \text{State Box Weight})}$$

$$\text{Process Market MYAP} = \frac{\sum(\text{State Process Value} * \text{State Box Weight})}{\sum(\text{State Process Boxes} * \text{State Box Weight})}$$

$$\text{"All" Sales MYAP} = \frac{\sum(\text{State All Value} * \text{State Box Weight})}{\sum(\text{State All Boxes} * \text{State Box Weight})}$$

For commodities with the same box weights across all States, the U.S. MYAs are derived by dividing the sum of States' values by the sum of States' boxes.

U.S. value of production for a given commodity is the sum of the State's values for that commodity. The State level value of production for each commodity is computed as follows:

$$\text{Fresh Market Value} = \text{Fresh Market MYAP} * \text{Fresh Market Boxes}$$

$$\text{Process Market Value} = \text{Process Market MYAP} * \text{Process Market Boxes}$$

$$\text{"All" Sales Value} = \text{Fresh Market Value} + \text{Process Market Value}$$

Citrus prices are based on weighted average F.O.B. packed prices received for fresh fruit and weighted average prices received at the processing plant door for processing fruit. Equivalent returns for fresh and processed fruit are calculated at the packinghouse-door level by deducting sorting, grading, packing, cooling, marketing, and other costs from the two base prices. In some cases, this results in negative returns.

## Information Contacts

Listed below are the commodity specialists in the Crops Branch of the National Agricultural Statistics Service to contact for additional information.

Joe Prusacki, Chief	(202) 720-2127
Field Crops Section	
Greg Thessen, Head	(202) 720-2127
Scott Cox - Wheat, Rye	(202) 720-8068
Ty Kalas - Corn, Proso Millet, Flaxseed	(202) 720-9526
Sheila Corley - Cotton, Cotton Ginnings	(202) 720-5944
Travis Thorson - Hay, Oats, Sorghum	(202) 690-3234
Jason Lamprecht - Soybeans, Minor Oilseeds	(202) 720-7369
Dennis Koong - Peanuts, Rice	(202) 720-7688
Brian Young - Crop Weather, Barley, Sugar Crops	(202) 720-7621
Fruit, Vegetable & Special Crops Section	
Jim Smith, Head	(202) 720-2127
Cathy Scherrer - Dry Beans, Potatoes, Sweet Potatoes	(202) 720-4285
Jorge Garcia-Pratts - Citrus, Tropical Fruits	(202) 720-5412
Debbie Flippin - Austrian Winter Peas, Dry Edible Peas, Lentils, Mint, Mushrooms, Peaches, Pears, Wrinkled Seed Peas	(202) 720-3250
Leslie Colburn - Berries, Grapes, Maple Syrup, Tobacco	(202) 720-7235
Terry O'Connor - Apples, Apricots, Cherries, Cranberries, Plums, Prunes	(202) 720-4288
Kim Ritchie - Hops	(360) 902-1940
Rich Holcomb - Floriculture, Nursery, Nuts	(202) 720-4215
Biz Wallingsford - Fresh and Processing Vegetables, Onions, Strawberries	(202) 720-2157

## Index

	<b>Page</b>
Comments .....	3
Frozen Concentrated Orange Juice Yield, Florida .....	11
Grapefruit .....	4, 12
Grapefruit Processed, Florida .....	11
Information Contacts .....	48
Lemons .....	4, 14
Marketing Year Average Prices Received, by Crop, by State .....	38
Marketing Seasons and Net Weight per Box .....	46
Monthly Average Prices and Equivalent Returns, by Crop, by State .....	17
Oranges .....	4, 6
Oranges Processed, Florida .....	11
Price Definitions .....	47
Price Narrative .....	16
Tangelos .....	4, 14
Tangerines .....	4, 14
Tangerines Processed, Florida .....	11
Temples .....	4, 14
Total Citrus Fruits .....	5

## ACCESS TO REPORTS!!

---

For your convenience, there are several ways to obtain NASS reports, data products, and services:

### INTERNET ACCESS

All NASS reports are available free of charge on the worldwide Internet. For access, connect to the Internet and go to the NASS Home Page at: [www.usda.gov/nass/](http://www.usda.gov/nass/). Select "Today's Reports" or Publications and then Reports Calendar or Publications and then Search, by Title or Subject.

### E-MAIL SUBSCRIPTION

All NASS reports are available by subscription free of charge direct to your e-mail address. Starting with the NASS Home Page at [www.usda.gov/nass/](http://www.usda.gov/nass/), click on **Publications**, then click on the **Subscribe by E-mail** button which takes you to the page describing e-mail delivery of reports. Finally, click on **Go to the Subscription Page** and follow the instructions.

-----

### PRINTED REPORTS OR DATA PRODUCTS

**CALL OUR TOLL-FREE ORDER DESK: 800-999-6779 (U.S. and Canada)**  
**Other areas, please call 703-605-6220      FAX: 703-605-6900**  
**(Visa, MasterCard, check, or money order acceptable for payment.)**

-----

### ASSISTANCE

For **assistance** with general agricultural statistics or further information about NASS or its products or services, contact the **Agricultural Statistics Hotline** at **800-727-9540**, 7:30 a.m. to 4:00 p.m. ET, or e-mail: [nass@nass.usda.gov](mailto:nass@nass.usda.gov).

The U.S. Department of Agriculture (USDA) prohibits discrimination in all its programs and activities on the basis of race, color, national origin, age, disability, and where applicable, sex, marital status, familial status, parental status, religion, sexual orientation, genetic information, political beliefs, reprisal, or because all or part of an individual's income is derived from any public assistance program. (Not all prohibited bases apply to all programs.) Persons with disabilities who require alternative means for communication of program information (Braille, large print, audiotape, etc.) should contact USDA's TARGET Center at (202) 720-2600 (voice and TDD).

To file a complaint of discrimination, write to USDA, Director, Office of Civil Rights, 1400 Independence Avenue, S.W., Washington, D.C. 20250-9410, or call (800) 795-3272 (voice) or (202) 720-6382 (TDD). USDA is an equal opportunity provider and employer.

# **USDA Data Users' Meeting**

**October 17, 2005**

**Embassy Suites at O'Hare**

**Chicago, Illinois**

**(847) 678-4000**

The USDA's National Agricultural Statistics Service will be organizing an open forum for data users. The purpose will be to provide updates on pending changes in the various statistical and information programs and seek comments and input from data users. Other USDA agencies to be represented will include the Agricultural Marketing Service, the Economic Research Service, the Foreign Agricultural Service, and World Agricultural Outlook Board. The Foreign Trade Division from the Census Bureau will also be included in the meeting.

For registration details or additional information for the Data Users' Meeting, see the NASS homepage at [www.usda.gov/nass/](http://www.usda.gov/nass/) or contact Lynda Ford (NASS) at (202) 720-3896 or at [lynda\\_ford@nass.usda.gov](mailto:lynda_ford@nass.usda.gov).

This Data Users' Meeting precedes an Industry Outlook meeting that will be held at the same location on October 18, 2005. The Outlook meeting brings together analysts from various commodity sectors to discuss the outlook situation. For more information about the outlook meeting and to register contact Jim Robb (Livestock and Marketing Information Center) at (720) 544-2941 or at [robb@lmic.info](mailto:robb@lmic.info).