



United States
Department of
Agriculture

National
Agricultural
Statistics
Service



Citrus Fruits 2006 Summary

September 2006

Fr Nt 3-1 (06)

USDA

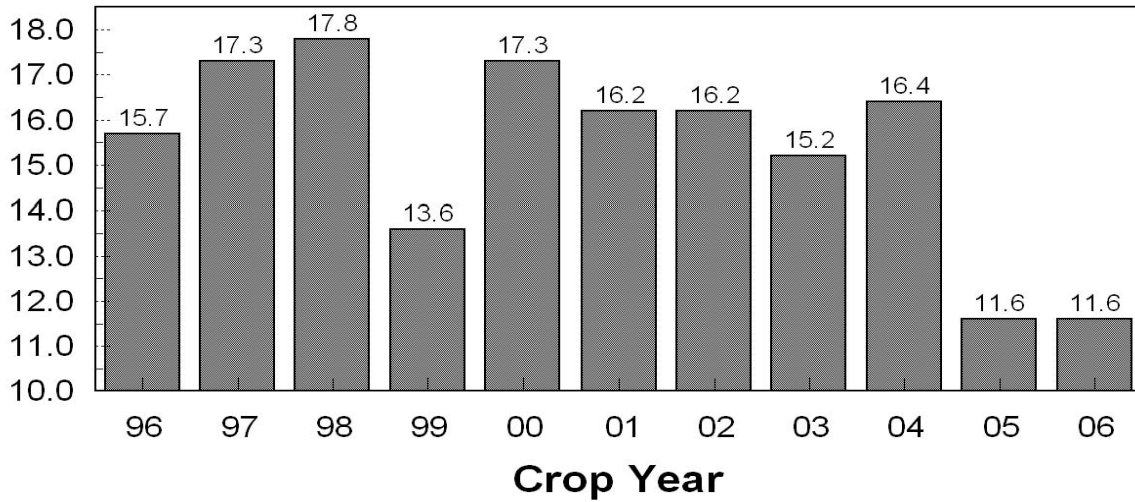


Table of Contents

	Page
U.S. Citrus: Utilized Production and Value of Production: 1996-2006	2
Citrus Narrative	3
Citrus Fruits: United States	4
Total Citrus Fruits, by State	5
Oranges	6
Frozen Concentrated Orange Juice Yield, Florida	11
Oranges Processed, by Product Type, Florida	11
Grapefruit Processed, by Product Type, Florida	11
Tangerines Processed, by Product Type, Florida	11
Grapefruit	12
Lemons	14
Tangelos	14
Tangerines	14
Temples	14
Citrus Prices Narrative	16
Monthly Average Prices and Equivalent Returns, by Crop, By State	17
Marketing Year Average Prices Received, by Crop, By State	38
Marketing Seasons and Net Weight per Box	46
Price Definitions	47
Information Contacts	48
Index	49

U.S. Citrus Utilized Production

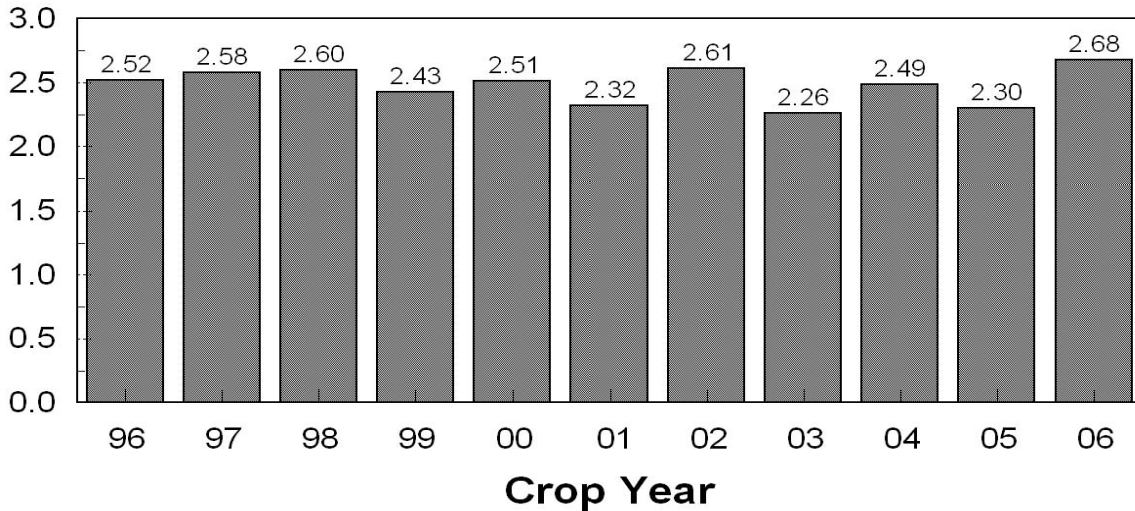
Million Tons



2006 on chart covers first bloom in 2005 through harvest in 2006, etc.

U.S. Citrus Value of Production Packinghouse-door equivalents

Billion Dollars



2006 on chart covers first bloom in 2005 through harvest in 2006, etc.

Citrus Utilized Production Virtually Unchanged, Value Up 16 Percent

Citrus utilized production for the 2005-06 season totaled 11.6 million tons, virtually unchanged from the 2004-05 season but 35 percent lower than the record high production of 17.8 million tons for the 1997-98 season. Florida accounted for 68 percent of total U.S. citrus production, California totaled 28 percent, while Texas and Arizona produced the remaining 4 percent.

Florida's orange production, at 148 million boxes, is down 1 percent from the previous season. Grapefruit utilization in Florida, at 19.3 million boxes, is up 51 percent from last season's utilization. Florida's total citrus utilization increased 3 percent from the previous season but is 40 percent below the 2003-04 season. Bearing acreage, at 576,400 acres, is 65,000 acres below the 2004-05 season. This is the lowest bearing acreage since the 1993-94 season.

Utilized citrus production in California fell 6 percent from the 2004-05 season. California's all orange production, at 57.5 million boxes, is 11 percent lower than the previous season. Grapefruit production, at 6.00 million boxes, is down 2 percent from the 2004-05 season. Utilized production of citrus in Texas is down 18 percent from the 2004-05 season. Orange production is down 10 percent from the previous season and grapefruit production decreased 21 percent. Arizona's total citrus production is up 46 percent from last season. Production of both oranges and lemons are up 5 and 58 percent, respectively, while grapefruit utilized production is down 29 percent from the 2004-05 season.

The value of the 2005-06 U.S. citrus crop is up 16 percent from last season, to \$2.68 billion (packinghouse-door equivalent). Total value of production for 2005-06 is higher for all types of citrus, except grapefruit. Orange value of production increased 20 percent from last season, while grapefruit value decreased 4 percent. Tangerine value of production increased 8 percent from last season. Lemon value of production increased 28 percent. Tangelo and Temple values are up 43 percent and 22 percent, respectively, from the previous season.

Overall comparisons discussed above are based on like fruit types. The revised production and utilization estimates are based on all data available at the end of the marketing season, including information from marketing orders, shipments, and processor records. Allowances are made for recorded local utilization and home use. Estimates for the 2005-06 California Valencia oranges and grapefruit are preliminary, since the marketing season is not complete at publication time. Revisions to the utilized production estimates for all citrus for the 2005-06 season will be available in the April 2007 issue of *Crop Production*.

**Citrus Fruits: Acreage, Production, Utilization, and Value by Crop,
United States, 2004-06**

Crop and Season	Bearing Acreage	Production	Utilization of Production		Value of Production ¹
			Fresh	Processed	
	<i>Acres</i>	<i>1,000 Tons</i>	<i>1,000 Tons</i>	<i>1,000 Tons</i>	<i>1,000 Dollars</i>
Oranges					
Early, Midseason and Navel					
2003-04	407,800	7,223	1,589	5,634	963,557
2004-05	392,600	5,283	1,512	3,771	842,392
2005-06	365,400	5,150	1,458	3,692	963,735
Valencia					
2003-04	355,300	5,649	588	5,061	810,896
2004-05	345,000	3,969	730	3,239	632,989
2005-06	319,700	3,748	486	3,262	802,573
All Oranges					
2003-04	763,100	12,872	2,177	10,695	1,774,453
2004-05	737,600	9,252	2,242	7,010	1,475,381
2005-06	685,100	8,898	1,944	6,954	1,766,308
Grapefruit					
2003-04	114,800	2,165	1,021	1,144	307,811
2004-05	103,000	1,018	626	392	383,041
2005-06	91,000	1,232	603	629	368,175
Lemons					
2003-04	59,800	798	540	258	275,620
2004-05	58,500	870	499	371	306,434
2005-06	57,500	942	659	283	391,959
Tangelos					
2003-04	8,000	45	25	20	10,021
2004-05	6,400	70	22	48	8,004
2005-06	6,300	63	25	38	11,431
Tangerines ²					
2003-04	36,200	417	301	116	112,232
2004-05	37,300	335	262	73	127,251
2005-06	35,300	417	286	131	137,666
Temples					
2003-04	3,400	63	15	48	4,915
2004-05	2,900	29	9	20	3,314
2005-06	2,500	32	10	22	4,034

¹ Packinghouse-door equivalents.

² FL only: Includes Fallglo, Sunburst, and Honey varieties only.

Citrus Fruits: Acreage, Production, Utilization, and Value by State, United States, 2004-06

State	Bearing Acreage	Production	Utilization of Production		Value of Production ¹
			Fresh	Processed	
	<i>Acres</i>	<i>1,000 Tons</i>	<i>1,000 Tons</i>	<i>1,000 Tons</i>	<i>1,000 Dollars</i>
Total Citrus					
AZ					
2003-04	27,000	162	112	50	41,315
2004-05	26,000	127	79	48	38,134
2005-06	23,500	185	108	77	46,132
CA					
2003-04	252,000	2,855	2,377	478	893,439
2004-05	251,000	3,511	2,568	943	1,033,749
2005-06	250,500	3,290	2,405	885	1,068,415
FL					
2003-04	679,000	13,045	1,404	11,641	1,520,503
2004-05	641,400	7,597	836	6,761	1,142,858
2005-06	576,400	7,832	831	7,001	1,491,136
TX					
2003-04	27,300	298	186	112	29,795
2004-05	27,300	339	177	162	88,684
2005-06	27,300	277	183	94	73,890
US					
2003-04	985,300	16,360	4,079	12,281	2,485,052
2004-05	945,700	11,574	3,660	7,914	2,303,425
2005-06	877,700	11,584	3,527	8,057	2,679,573

¹ Packinghouse-door equivalents.

**Oranges: Acreage, Yield, and Utilization
by State and Crop, 2004-06**

State, Crop and Season	Bearing Acreage	Yield per Acre	Utilization of Production		
			Fresh	Processed	Total
	<i>Acres</i>	<i>Boxes</i>	<i>1,000 Boxes¹</i>	<i>1,000 Boxes¹</i>	<i>1,000 Boxes¹</i>
AZ					
Navel and Misc.					
2003-04	3,000	100	198	102	300
2004-05	2,800	86	143	97	240
2005-06	2,500	100	155	95	250
Valencia					
2003-04	2,500	68	170		170
2004-05	2,200	86	190		190
2005-06	1,800	111	81	119	200
All					
2003-04	5,500	85	368	102	470
2004-05	5,000	86	333	97	430
2005-06	4,300	105	236	214	450
CA					
Navel and Misc.					
2003-04	131,000	302	34,300	5,200	39,500
2004-05	133,000	331	33,700	10,300	44,000
2005-06	135,000	337	31,600	13,900	45,500
Valencia					
2003-04	53,000	208	10,200	800	11,000
2004-05	49,000	418	15,500	5,000	20,500
2005-06	46,000	261	9,700	2,300	12,000
All					
2003-04	184,000	274	44,500	6,000	50,500
2004-05	182,000	354	49,200	15,300	64,500
2005-06	181,000	318	41,300	16,200	57,500
FL					
Early, Midseason					
2003-04	266,300	473	5,615	120,385	126,000
2004-05	249,300	317	4,403	74,697	79,100
2005-06	220,400	340	4,896	70,104	75,000
Valencia					
2003-04	298,500	389	4,278	111,722	116,000
2004-05	292,500	242	2,994	67,706	70,700
2005-06	270,600	269	2,450	70,450	72,900
All					
2003-04	564,800	428	9,893	232,107	242,000
2004-05	541,800	276	7,397	142,403	149,800
2005-06	491,000	301	7,346	140,554	147,900

¹ See page 46 for net weight per box.

Oranges: Price and Value by State and Crop, 2004-06

State, Crop and Season	Price per Box ^{1 2}			Value of Production		
	Fresh	Processed	All	Fresh	Processed	Total
	<i>Dollars</i>	<i>Dollars</i>	<i>Dollars</i>	<i>1,000 Dollars</i>	<i>1,000 Dollars</i>	<i>1,000 Dollars</i>
AZ						
Navel and Misc.						
2003-04	9.65	0.39	6.50	1,911	40	1,951
2004-05	12.90	0.38	7.84	1,845	37	1,882
2005-06	9.95	1.50	6.74	1,542	143	1,685
Valencia						
2003-04	4.23		4.23	719		719
2004-05	3.18		3.18	604		604
2005-06	8.93	1.41	4.46	723	168	891
All						
2003-04	7.15	0.39	5.68	2,630	40	2,670
2004-05	7.35	0.38	5.78	2,449	37	2,486
2005-06	9.60	1.45	5.72	2,265	311	2,576
CA						
Navel and Misc.						
2003-04	12.15	0.39	10.60	416,745	2,028	418,773
2004-05	12.70	0.38	9.82	427,990	3,914	431,904
2005-06	13.25	1.50	9.66	418,700	20,850	439,550
Valencia						
2003-04	13.43	0.32	12.48	136,986	256	137,242
2004-05	10.98	0.30	8.38	170,190	1,500	171,690
2005-06	13.63	1.41	11.29	132,211	3,243	135,454
All						
2003-04	12.44	0.38	11.01	553,731	2,284	556,015
2004-05	12.16	0.35	9.36	598,180	5,414	603,594
2005-06	13.34	1.49	10.00	550,911	24,093	575,004
FL						
Early, Midseason						
2003-04	6.85	4.14	4.26	38,463	498,394	536,857
2004-05	10.00	4.74	5.03	44,030	354,064	398,094
2005-06	8.80	6.71	6.85	43,085	470,398	513,483
Valencia						
2003-04	5.05	5.82	5.79	21,604	650,222	671,826
2004-05	8.20	6.42	6.50	24,551	434,673	459,224
2005-06	7.60	9.17	9.12	18,620	646,027	664,647
All						
2003-04	6.07	4.95	4.99	60,067	1,148,616	1,208,683
2004-05	9.27	5.54	5.72	68,581	788,737	857,318
2005-06	8.40	7.94	7.97	61,705	1,116,425	1,178,130

¹ Equivalent packinghouse-door returns.

² See page 47 for price per box calculations.

**Oranges: Acreage, Yield, and Utilization
by State and Crop, 2004-06**

State, Crop and Season	Bearing Acreage	Yield per Acre	Utilization of Production		
			Fresh	Processed	Total
	<i>Acres</i>	<i>Boxes</i>	<i>1,000 Boxes¹</i>	<i>1,000 Boxes¹</i>	<i>1,000 Boxes¹</i>
TX²					
Early, Midseason					
2003-04	7,500	189	998	422	1,420
2004-05	7,500	200	1,054	446	1,500
2005-06	7,500	187	1,100	300	1,400
Valencia					
2003-04	1,300	177	171	59	230
2004-05	1,300	208	178	92	270
2005-06	1,300	154	170	30	200
All					
2003-04	8,800	188	1,169	481	1,650
2004-05	8,800	201	1,232	538	1,770
2005-06	8,800	182	1,270	330	1,600
US					
Early, Midseason and Navel					
2003-04	407,800	410	41,111	126,109	167,220
2004-05	392,600	318	39,300	85,540	124,840
2005-06	365,400	334	37,751	84,399	122,150
Valencia					
2003-04	355,300	359	14,819	112,581	127,400
2004-05	345,000	266	18,862	72,798	91,660
2005-06	319,700	267	12,401	72,899	85,300
Total					
2003-04	763,100	386	55,930	238,690	294,620
2004-05	737,600	294	58,162	158,338	216,500
2005-06	685,100	303	50,152	157,298	207,450

¹ See page 46 for net weight per box.

² Includes small quantities of tangerines in Early, Midseason.

Oranges: Price and Value by State and Crop, 2004-06

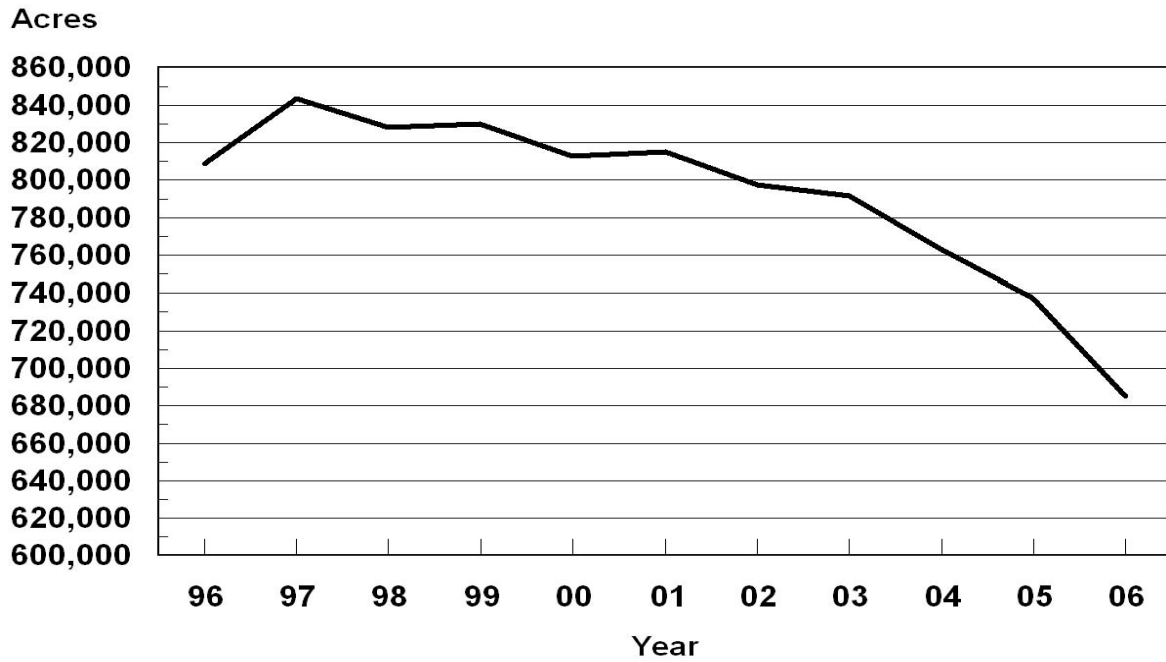
State, Crop and Season	Price per Box ^{1 2}			Value of Production		
	Fresh	Processed	All	Fresh	Processed	Total
	<i>Dollars</i>	<i>Dollars</i>	<i>Dollars</i>	<i>1,000 Dollars</i>	<i>1,000 Dollars</i>	<i>1,000 Dollars</i>
TX ³						
Early, Midseason						
2003-04	4.91	2.55	4.21	4,900	1,076	5,976
2004-05	9.11	2.04	7.01	9,602	910	10,512
2005-06	7.30	3.29	6.44	8,030	987	9,017
Valencia						
2003-04	5.61	2.55	4.82	959	150	1,109
2004-05	7.21	2.04	5.45	1,283	188	1,471
2005-06	8.70	3.40	7.91	1,479	102	1,581
All						
2003-04	5.01	2.55	4.29	5,859	1,226	7,085
2004-05	8.84	2.04	6.77	10,885	1,098	11,983
2005-06	7.49	3.30	6.62	9,509	1,089	10,598
US						
Early, Midseason and Navel						
2003-04	11.10	4.00	5.56	462,019	501,538	963,557
2004-05	12.24	4.28	6.55	483,467	358,925	842,392
2005-06	12.37	5.96	7.78	471,357	492,378	963,735
Valencia						
2003-04	10.49	5.79	6.27	160,268	650,628	810,896
2004-05	10.35	6.06	6.86	196,628	436,361	632,989
2005-06	12.15	8.95	9.37	153,033	649,540	802,573
Total						
2003-04	10.93	4.85	5.88	622,287	1,152,166	1,774,453
2004-05	11.63	5.10	6.68	680,095	795,286	1,475,381
2005-06	12.32	7.36	8.44	624,390	1,141,918	1,766,308

¹ Equivalent packinghouse-door returns.

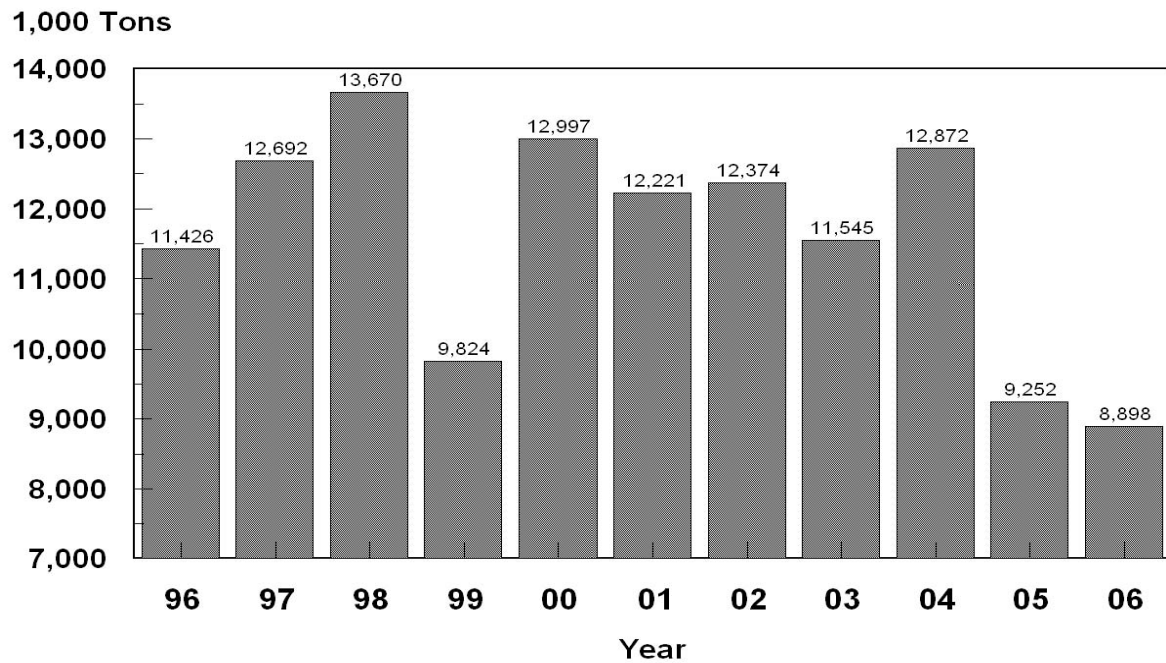
² See page 47 for price per box calculations.

³ Includes small quantities of tangerines in Early, Midseason.

U.S. Oranges Bearing Acres



U.S. Oranges Utilized Production



Frozen Concentrated Orange Juice Yield, Florida, 2004-06 ^{1 2}

Season	Early, Midseason	Valencia	All
	<i>Gallons per Box</i>	<i>Gallons per Box</i>	<i>Gallons per Box</i>
2003-04	1.44560	1.69155	1.55656
2004-05	1.52920	1.67671	1.58311
2005-06	1.52690	1.75268	1.62745

¹ Gallons per box at 42.0 degrees Brix.

² Per Florida Citrus Processors Association.

Oranges Processed, by Product Type, Florida, 2004-06 ^{1 2}

Season	Frozen Concentrates	Chilled Products	Other Processed ³	Total Processed
	<i>1,000 Boxes</i>	<i>1,000 Boxes</i>	<i>1,000 Boxes</i>	<i>1,000 Boxes</i>
2003-04	139,727	93,393	500	233,620
2004-05	54,322	88,514	1,059	143,895
2005-06	51,873	88,662	1,363	141,898

¹ Includes tangelos, Temples, and K-Early Citrus.

² Per Florida Citrus Processors Association.

³ Includes sections and salads, canned juice, and blend.

Grapefruit Processed, by Product Type, Florida, 2004-06 ¹

Season	Frozen Concentrates	Chilled Products	Other Processed ²	Total Processed
	<i>1,000 Boxes</i>	<i>1,000 Boxes</i>	<i>1,000 Boxes</i>	<i>1,000 Boxes</i>
2003-04	17,186	6,586	471	24,243
2004-05	2,466	2,763	152	5,381
2005-06	8,002	4,122	262	12,386

¹ Per Florida Citrus Processors Association.

² Includes sections and salads, canned juice, and blend.

Tangerines Processed, by Product Type, Florida, 2004-06 ¹

Season	Frozen Concentrates	Chilled Products	Other Processed ²	Total Processed
	<i>1,000 Boxes</i>	<i>1,000 Boxes</i>	<i>1,000 Boxes</i>	<i>1,000 Boxes</i>
2003-04	829		1,231	2,060
2004-05	482		650	1,132
2005-06	341		1,551	1,892

¹ Per Florida Citrus Processors Association.

² Includes sections and salads, canned juice, and blend.

**Grapefruit: Acreage, Yield, and Utilization
by State, Crop, and United States, 2004-06**

State, Crop and Season	Bearing Acreage	Yield per Acre	Utilization of Production		
			Fresh	Processed	Total
	<i>Acres</i>	<i>Boxes</i>	<i>1,000 Boxes¹</i>	<i>1,000 Boxes¹</i>	<i>1,000 Boxes¹</i>
AZ					
All					
2003-04	1,500	93	140		140
2004-05	1,500	93	140		140
2005-06	1,200	83	100		100
CA					
All					
2003-04	12,500	464	5,100	700	5,800
2004-05	12,000	508	5,400	700	6,100
2005-06	11,500	522	5,300	700	6,000
FL					
White Seedless ²					
2003-04	31,300	508	3,273	12,627	15,900
2004-05	25,800	132	1,352	2,048	3,400
2005-06	21,300	305	1,433	5,067	6,500
Colored Seedless					
2003-04	51,000	490	13,384	11,616	25,000
2004-05	45,200	208	6,067	3,333	9,400
2005-06	38,500	332	5,481	7,319	12,800
All					
2003-04	82,300	497	16,657	24,243	40,900
2004-05	71,000	180	7,419	5,381	12,800
2005-06	59,800	323	6,914	12,386	19,300
TX					
All					
2003-04	18,500	308	3,418	2,282	5,700
2004-05	18,500	357	3,125	3,475	6,600
2005-06	18,500	281	3,200	2,000	5,200
US					
Total					
2003-04	114,800	458	25,315	27,225	52,540
2004-05	103,000	249	16,084	9,556	25,640
2005-06	91,000	336	15,514	15,086	30,600

¹ See page 46 for net weight per box.

² "Other" seedy grapefruit estimates included with white seedless.

Grapefruit: Price and Value by State, Crop, and United States, 2004-06

State, Crop and Season	Price per Box ^{1 2}			Value of Production		
	Fresh	Processed	All	Fresh	Processed	Total
	<i>Dollars</i>	<i>Dollars</i>	<i>Dollars</i>	<i>1,000 Dollars</i>	<i>1,000 Dollars</i>	<i>1,000 Dollars</i>
AZ						
All						
2003-04	7.49		7.49	1,049		1,049
2004-05	12.92		12.92	1,809		1,809
2005-06	13.54		13.54	1,354		1,354
CA						
All						
2003-04	11.59	-0.27	10.16	59,109	-189	58,920
2004-05	18.32	-0.28	16.19	98,928	-196	98,732
2005-06	14.74	-0.29	12.99	78,122	-203	77,919
FL						
White Seedless ³						
2003-04	9.40	2.75	4.12	30,766	34,724	65,490
2004-05	23.72	8.34	14.46	32,069	17,080	49,149
2005-06	18.30	10.10	11.91	26,224	51,177	77,401
Colored Seedless						
2003-04	9.22	3.12	6.39	123,400	36,242	159,642
2004-05	21.48	7.90	16.66	130,319	26,331	156,650
2005-06	15.69	8.50	11.58	85,997	62,212	148,209
All						
2003-04	9.26	2.93	5.50	154,166	70,966	225,132
2004-05	21.89	8.07	16.08	162,388	43,411	205,799
2005-06	16.23	9.15	11.69	112,221	113,389	225,610
TX						
All						
2003-04	6.01	0.95	3.98	20,542	2,168	22,710
2004-05	23.21	1.20	11.62	72,531	4,170	76,701
2005-06	17.71	3.31	12.17	56,672	6,620	63,292
US						
Total						
2003-04	9.21	2.71	5.77	234,866	72,945	307,811
2004-05	21.06	5.13	14.93	335,656	47,385	383,041
2005-06	16.09	8.06	11.98	248,369	119,806	368,175

¹ Equivalent packinghouse-door returns.

² See page 47 for price per box calculation.

³ "Other" seedy grapefruit estimates included with white seedless.

**Lemons, Tangelos, Tangerines, and Temples:
Acreage, Yield, and Utilization by Crop and State, 2004-06**

Crop, State and Season	Bearing Acreage	Yield per Acre	Utilization of Production		
			Fresh	Processed	Total
	<i>Acres</i>	<i>Boxes</i>	<i>1,000 Boxes¹</i>	<i>1,000 Boxes¹</i>	<i>1,000 Boxes¹</i>
Lemons					
AZ					
2003-04	14,800	203	2,008	992	3,000
2004-05	14,500	166	1,325	1,075	2,400
2005-06	13,500	281	2,167	1,633	3,800
CA					
2003-04	45,000	400	12,200	5,800	18,000
2004-05	44,000	466	11,803	8,697	20,500
2005-06	44,000	477	15,172	5,828	21,000
US					
2003-04	59,800	351	14,208	6,792	21,000
2004-05	58,500	391	13,128	9,772	22,900
2005-06	57,500	431	17,339	7,461	24,800
Tangelos					
FL					
2003-04	8,000	125	545	455	1,000
2004-05	6,400	242	495	1,055	1,550
2005-06	6,300	222	547	853	1,400
Tangerines					
AZ²					
2003-04	5,200	133	466	224	690
2004-05	5,000	80	322	78	400
2005-06	4,500	122	357	193	550
CA²					
2003-04	10,500	210	1,939	261	2,200
2004-05	13,000	223	2,477	423	2,900
2005-06	14,000	257	2,696	904	3,600
FL³					
2003-04	20,500	317	4,440	2,060	6,500
2004-05	19,300	231	3,318	1,132	4,450
2005-06	16,800	327	3,608	1,892	5,500
US²					
2003-04	36,200	259	6,845	2,545	9,390
2004-05	37,300	208	6,117	1,633	7,750
2005-06	35,300	273	6,661	2,989	9,650
Temples					
FL					
2003-04	3,400	412	342	1,058	1,400
2004-05	2,900	224	213	437	650
2005-06	2,500	280	209	491	700

¹ See page 46 for net weight per box.

² Includes tangelos and tangors.

³ Includes only Fallglo, Sunburst, and Honey varieties.

**Lemons, Tangelos, Tangerines, and Temples:
Price and Value by Crop and State, 2004-06**

Crop, State and Season	Price per Box ^{1 2}			Value of Production		
	Fresh	Processed	All	Fresh	Processed	Total
	<i>Dollars</i>	<i>Dollars</i>	<i>Dollars</i>	<i>1,000 Dollars</i>	<i>1,000 Dollars</i>	<i>1,000 Dollars</i>
Lemons						
AZ						
2003-04	15.01	0.20	10.11	30,140	198	30,338
2004-05	21.32	0.18	11.85	28,249	194	28,443
2005-06	16.73	-0.40	9.37	36,254	-653	35,601
CA						
2003-04	20.01	0.20	13.63	244,122	1,160	245,282
2004-05	23.42	0.18	13.56	276,426	1,565	277,991
2005-06	23.63	-0.37	16.97	358,514	-2,156	356,358
US						
2003-04	19.30	0.20	13.13	274,262	1,358	275,620
2004-05	23.21	0.18	13.38	304,675	1,759	306,434
2005-06	22.77	-0.38	15.81	394,768	-2,809	391,959
Tangelos						
FL						
2003-04	16.25	2.56	10.02	8,856	1,165	10,021
2004-05	9.20	3.27	5.16	4,554	3,450	8,004
2005-06	15.30	3.59	8.17	8,369	3,062	11,431
Tangerines						
AZ ³						
2003-04	15.69	-0.24	10.52	7,312	-54	7,258
2004-05	16.82	-0.26	13.49	5,416	-20	5,396
2005-06	18.34	0.28	12.00	6,547	54	6,601
CA ³						
2003-04	17.09	0.32	15.10	33,138	84	33,222
2004-05	21.52	0.30	18.42	53,305	127	53,432
2005-06	21.84	0.28	16.43	58,881	253	59,134
FL ⁴						
2003-04	14.75	3.04	11.04	65,490	6,262	71,752
2004-05	19.10	4.46	15.38	63,374	5,049	68,423
2005-06	17.00	5.60	13.08	61,336	10,595	71,931
US ³						
2003-04	15.37	2.57	11.81	105,940	6,292	112,232
2004-05	19.85	3.36	16.28	122,095	5,156	127,251
2005-06	18.77	3.93	14.11	126,764	10,902	137,666
Temples						
FL						
2003-04	6.05	2.69	3.51	2,069	2,846	4,915
2004-05	6.80	4.27	5.10	1,448	1,866	3,314
2005-06	9.20	4.30	5.76	1,923	2,111	4,034

¹ Equivalent packinghouse-door returns.

² See page 47 for price per box calculation.

³ Includes tangelos and tangors.

⁴ Includes only Fallglo, Sunburst, and Honey varieties.

Citrus Prices

Revised State and U.S. monthly average prices and equivalent returns, and marketing year average prices for the 2003-04, 2004-05, and 2005-06 citrus crops are shown on the following pages. Revised monthly prices refer to all fruit sold in a given month regardless of the crop year in which the fruit was harvested.

Marketing year average prices refer to the prices received by growers for the entire marketing season for any one crop year. The crop year 2005-06 as shown on all citrus tables in this publication refers to the crop which bloomed in 2005 and was marketed during the 2005-06 season. For example, the 2005-06 marketing year average price received by California growers for tangerines refers to marketings from October 2005 through May 2006. In some years the season may vary a month or two but a price was estimated only for those months with sufficient movement.

Monthly and marketing year average prices are weighted by box size at the U.S. level for grapefruit, oranges, and tangerines. See page 46 for approximate net contents per box at the State level.

Citrus prices are based on weighted average F.O.B. packed prices received for fresh fruit and weighted average prices received at the processing plant door for processing fruit. Equivalent returns for fresh and processed fruits are calculated at the packinghouse-door level and on-tree level by deducting hauling, picking, sorting, grading, packing, cooling, marketing, and other costs from the two base prices. In some cases, this results in negative returns.

**Oranges: Average Prices and Equivalent Returns, United States
September 2003 - August 2006**

State, Month, and Year	Equiv. P.H.D.			Equiv. On-Tree			
	F.O.B. Packed	All	Fresh	Proc.	All	Fresh	Proc.
US	All Oranges						
	<i>Dollars per box</i>	<i>Dollars per box</i>	<i>Dollars per box</i>	<i>Dollars per box</i>	<i>Dollars per box</i>	<i>Dollars per box</i>	<i>Dollars per box</i>
Sep 2003	14.30	5.44	7.38	0.34	3.00	4.94	-2.10
Oct	17.50	6.33	9.14	3.17	4.25	7.02	1.13
Nov	18.80	4.89	10.98	3.90	2.81	8.73	1.84
Dec	18.20	5.05	10.44	4.04	2.96	8.17	1.99
Jan 2004	17.40	4.86	9.74	4.10	2.78	7.46	2.05
Feb	17.60	5.23	9.89	4.14	3.12	7.59	2.08
Mar	18.80	6.74	11.25	5.58	4.56	8.93	3.43
Apr	18.10	6.36	10.47	5.70	4.18	8.16	3.54
May	18.20	6.32	10.59	5.74	4.15	8.27	3.59
Jun	19.40	6.80	11.77	5.91	4.62	9.44	3.76
Jul	19.60	10.73	12.03	0.32	8.34	9.64	-2.07
Aug	21.00	12.66	13.43	0.32	10.27	11.04	-2.07
Sep	25.40	17.83	17.83		15.44	15.44	
Oct	31.00	22.99	23.21	2.04	20.68	20.89	0.71
Nov	21.70	8.33	13.66	3.91	6.05	11.29	1.71
Dec	20.10	5.97	12.20	4.38	3.73	9.84	2.18
Jan 2005	19.20	5.75	11.29	4.55	3.52	8.94	2.34
Feb	18.60	5.86	10.79	4.64	3.62	8.43	2.44
Mar	18.90	6.92	11.02	5.24	4.62	8.63	2.98
Apr	19.80	7.13	11.98	5.92	4.84	9.60	3.66
May	20.00	7.30	12.22	6.23	5.02	9.83	3.98
Jun	19.20	7.37	11.28	6.31	5.07	8.85	4.05
Jul	17.40	8.55	9.68	0.30	6.11	7.24	-2.14
Aug	17.00	6.19	9.28	0.30	3.75	6.84	-2.14
Sep	18.30	6.73	10.58	0.30	4.29	8.14	-2.14
Oct	19.10	6.48	11.12	0.42	4.04	8.67	-2.01
Nov	21.30	8.27	13.01	4.43	5.90	10.54	2.12
Dec	19.90	6.79	11.72	5.41	4.46	9.26	3.11
Jan 2006	18.70	7.48	10.59	6.79	5.16	8.17	4.49
Feb	18.70	7.61	10.66	6.79	5.27	8.23	4.48
Mar	18.80	8.29	10.80	7.45	5.78	8.37	4.93
Apr	21.00	9.08	12.98	8.22	6.44	10.53	5.55
May	22.20	9.78	14.24	8.85	7.13	11.77	6.17
Jun	22.70	9.70	14.63	8.77	7.05	12.13	6.09
Jul	22.40	9.20	14.35	7.64	6.56	11.84	4.97
Aug	25.20	14.52	17.33	1.41	12.03	14.84	-1.08

**Oranges: Average Prices and Equivalent Returns, Arizona
November 2003 - June 2006**

State, Month, and Year	Equiv. P.H.D.			Equiv. On-Tree			
	F.O.B. Packed	All	Fresh	Proc.	All	Fresh	Proc.
AZ	All Oranges						
	<i>Dollars per box</i>	<i>Dollars per box</i>	<i>Dollars per box</i>	<i>Dollars per box</i>	<i>Dollars per box</i>	<i>Dollars per box</i>	<i>Dollars per box</i>
Nov 2003	19.00	5.97	11.55	0.39	3.62	9.20	-1.96
Dec	17.60	7.20	10.15	0.39	4.85	7.80	-1.96
Jan 2004	17.20	6.72	9.75	0.39	4.37	7.40	-1.96
Feb	16.00	5.81	8.58	0.39	3.46	6.23	-1.96
Mar	14.20	5.60	6.68	0.39	3.22	4.30	-1.96
Apr	11.30	3.73	3.73		1.34	1.34	
Nov	23.00	11.03	15.40	0.38	8.63	13.00	-2.02
Dec	20.30	6.73	12.70	0.38	4.33	10.30	-2.02
Jan 2005	19.40	7.99	11.80	0.38	5.59	9.40	-2.02
Feb	18.20	5.86	10.60	0.38	3.46	8.20	-2.02
Mar	16.80	9.09	9.09		6.65	6.65	
Apr	9.55	1.83	1.83		-0.61	-0.61	
May	9.56	1.84	1.84		-0.60	-0.60	
Jun	5.60	-2.12	-2.12		-4.56	-4.56	
Nov	18.60	10.85	10.85		8.40	8.40	
Dec	19.10	8.72	11.35	1.50	6.27	8.90	-0.95
Jan 2006	17.00	7.27	9.25	1.50	4.82	6.80	-0.95
Feb	16.10	5.05	8.35	1.50	2.60	5.90	-0.95
Mar	12.00	2.64	4.14	1.49	0.17	1.67	-0.97
Apr	18.20	5.45	10.33	1.41	2.96	7.84	-1.08
May	18.90	5.26	11.03	1.41	2.77	8.54	-1.08
Jun	18.20	2.00	10.33	1.41	-0.49	7.84	-1.08

**Oranges: Average Prices and Equivalent Returns, Arizona
November 2003 - June 2006**

State, Month, and Year	F.O.B. Packed	Equiv. P.H.D.			Equiv. On-Tree		
		All	Fresh	Proc.	All	Fresh	Proc.
AZ							
Early and Midseason							
	<i>Dollars per box</i>	<i>Dollars per box</i>	<i>Dollars per box</i>	<i>Dollars per box</i>	<i>Dollars per box</i>	<i>Dollars per box</i>	<i>Dollars per box</i>
Nov 2003	19.00	5.97	11.55	0.39	3.62	9.20	-1.96
Dec 2003	17.60	7.20	10.15	0.39	4.85	7.80	-1.96
Jan 2004	17.20	6.72	9.75	0.39	4.37	7.40	-1.96
Feb 2004	16.90	6.24	9.45	0.39	3.89	7.10	-1.96
Mar 2004	15.60	5.19	8.15	0.39	2.84	5.80	-1.96
Nov 2004	23.00	11.03	15.40	0.38	8.63	13.00	-2.02
Dec 2004	20.30	6.73	12.70	0.38	4.33	10.30	-2.02
Jan 2005	19.40	7.99	11.80	0.38	5.59	9.40	-2.02
Feb 2005	18.20	5.86	10.60	0.38	3.46	8.20	-2.02
Mar 2005	15.00	7.40	7.40		5.00	5.00	
Nov 2005	18.60	10.85	10.85		8.40	8.40	
Dec 2005	19.10	8.72	11.35	1.50	6.27	8.90	-0.95
Jan 2006	17.00	7.27	9.25	1.50	4.82	6.80	-0.95
Feb 2006	16.10	5.05	8.35	1.50	2.60	5.90	-0.95
Mar 2006	15.10	3.15	7.35	1.50	0.70	4.90	-0.95
AZ							
Valencias							
Feb 2004	4.00	-3.57	-3.57		-5.96	-5.96	
Mar 2004	13.50	5.93	5.93		3.54	3.54	
Apr 2004	11.30	3.73	3.73		1.34	1.34	
Mar 2005	16.90	9.18	9.18		6.74	6.74	
Apr 2005	9.55	1.83	1.83		-0.61	-0.61	
May 2005	9.56	1.84	1.84		-0.60	-0.60	
Jun 2005	5.60	-2.12	-2.12		-4.56	-4.56	
Mar 2006	9.40	1.50	1.53	1.41	-0.99	-0.96	-1.08
Apr 2006	18.20	5.45	10.33	1.41	2.96	7.84	-1.08
May 2006	18.90	5.26	11.03	1.41	2.77	8.54	-1.08
Jun 2006	18.20	2.00	10.33	1.41	-0.49	7.84	-1.08

**Oranges: Average Prices and Equivalent Returns, California
September 2003 - August 2006**

State, Month, and Year	F.O.B. Packed	Equiv. P.H.D.			Equiv. On-Tree		
		All	Fresh	Proc.	All	Fresh	Proc.
CA							
All Oranges							
	<i>Dollars per box</i>	<i>Dollars per box</i>	<i>Dollars per box</i>	<i>Dollars per box</i>	<i>Dollars per box</i>	<i>Dollars per box</i>	<i>Dollars per box</i>
Sep 2003	14.30	5.44	7.38	0.34	3.00	4.94	-2.10
Oct	14.20	4.27	7.28	0.34	1.83	4.84	-2.10
Nov	22.00	12.85	14.55	0.39	10.50	12.20	-1.96
Dec	19.80	11.53	12.35	0.39	9.18	10.00	-1.96
Jan 2004	18.30	9.87	10.85	0.39	7.52	8.50	-1.96
Feb	18.40	9.80	10.90	0.39	7.45	8.55	-1.96
Mar	19.90	10.87	12.46	0.38	8.51	10.10	-1.97
Apr	19.60	9.78	12.09	0.39	7.43	9.74	-1.97
May	19.90	10.35	12.40	0.38	8.00	10.04	-1.97
Jun	21.10	12.18	13.60	0.34	9.80	11.22	-2.03
Jul	19.60	10.73	12.03	0.32	8.34	9.64	-2.07
Aug	21.00	12.66	13.43	0.32	10.27	11.04	-2.07
Sep	25.40	17.83	17.83		15.44	15.44	
Oct	31.20	23.63	23.63		21.23	21.23	
Nov	23.00	13.47	15.40	0.38	11.07	13.00	-2.02
Dec	20.40	11.09	12.80	0.38	8.69	10.40	-2.02
Jan 2005	19.50	9.89	11.90	0.38	7.49	9.50	-2.02
Feb	19.00	9.09	11.35	0.38	6.69	8.95	-2.02
Mar	19.40	9.02	11.75	0.37	6.62	9.34	-2.03
Apr	20.50	8.95	12.87	0.37	6.55	10.47	-2.03
May	20.70	9.87	13.04	0.37	7.46	10.63	-2.04
Jun	19.20	10.06	11.45	0.32	7.63	9.02	-2.11
Jul	17.40	8.55	9.68	0.30	6.11	7.24	-2.14
Aug	17.00	6.19	9.28	0.30	3.75	6.84	-2.14
Sep	18.30	6.73	10.58	0.30	4.29	8.14	-2.14
Oct	18.00	5.62	10.28	0.30	3.18	7.84	-2.14
Nov	23.20	13.46	15.45	1.50	11.01	13.00	-0.95
Dec	20.80	10.87	13.05	1.50	8.42	10.60	-0.95
Jan 2006	19.30	9.32	11.55	1.50	6.87	9.10	-0.95
Feb	19.30	8.59	11.56	1.50	6.14	9.11	-0.95
Mar	19.40	8.59	11.66	1.50	6.14	9.21	-0.95
Apr	21.60	9.65	13.79	1.50	7.20	11.34	-0.95
May	22.90	10.54	15.16	1.49	8.08	12.70	-0.97
Jun	23.70	10.69	15.81	1.46	8.21	13.33	-1.01
Jul	23.30	11.01	15.43	1.43	8.52	12.94	-1.06
Aug	25.20	14.52	17.33	1.41	12.03	14.84	-1.08

**Oranges: Average Prices and Equivalent Returns, California
November 2003 - August 2006**

State, Month, and Year	Equiv. P.H.D.			Equiv. On-Tree			
	F.O.B. Packed	All	Fresh	Proc.	All	Fresh	Proc.
CA	Navels and Miscellaneous						
	<i>Dollars per box</i>	<i>Dollars per box</i>	<i>Dollars per box</i>	<i>Dollars per box</i>	<i>Dollars per box</i>	<i>Dollars per box</i>	<i>Dollars per box</i>
Nov 2003	22.00	12.85	14.55	0.39	10.50	12.20	-1.96
Dec	19.80	11.53	12.35	0.39	9.18	10.00	-1.96
Jan 2004	18.30	9.87	10.85	0.39	7.52	8.50	-1.96
Feb	18.40	9.81	10.95	0.39	7.46	8.60	-1.96
Mar	20.00	10.90	12.55	0.39	8.55	10.20	-1.96
Apr	19.80	9.80	12.35	0.39	7.45	10.00	-1.96
May	20.40	10.20	12.95	0.39	7.85	10.60	-1.96
Jun	22.90	13.78	15.45	0.39	11.43	13.10	-1.96
Oct	32.10	24.50	24.50		22.10	22.10	
Nov	23.00	13.47	15.40	0.38	11.07	13.00	-2.02
Dec	20.40	11.09	12.80	0.38	8.69	10.40	-2.02
Jan 2005	19.50	9.89	11.90	0.38	7.49	9.50	-2.02
Feb	18.90	8.98	11.30	0.38	6.58	8.90	-2.02
Mar	19.10	8.62	11.50	0.38	6.22	9.10	-2.02
Apr	20.50	8.58	12.90	0.38	6.18	10.50	-2.02
May	21.40	9.33	13.80	0.38	6.93	11.40	-2.02
Jun	21.30	9.26	13.70	0.38	6.86	11.30	-2.02
Nov	23.20	13.46	15.45	1.50	11.01	13.00	-0.95
Dec	20.80	10.87	13.05	1.50	8.42	10.60	-0.95
Jan 2006	19.30	9.32	11.55	1.50	6.87	9.10	-0.95
Feb	19.30	8.47	11.55	1.50	6.02	9.10	-0.95
Mar	19.50	8.37	11.75	1.50	5.92	9.30	-0.95
Apr	21.80	9.43	14.05	1.50	6.98	11.60	-0.95
May	24.20	10.58	16.45	1.50	8.13	14.00	-0.95
Jun	29.80	11.09	22.05	1.50	8.64	19.60	-0.95
Jul		1.50		1.50	-0.95		-0.95
CA	Valencias						
Feb 2004	17.10	9.53	9.53		7.14	7.14	
Mar	19.30	10.59	11.73	0.32	8.20	9.34	-2.07
Apr	18.30	9.69	10.73	0.32	7.30	8.34	-2.07
May	19.00	10.69	11.43	0.32	8.30	9.04	-2.07
Jun	20.30	11.42	12.73	0.32	9.03	10.34	-2.07
Jul	19.60	10.73	12.03	0.32	8.34	9.64	-2.07
Aug	21.00	12.66	13.43	0.32	10.27	11.04	-2.07
Sep	25.40	17.83	17.83		15.44	15.44	
Oct	30.50	22.93	22.93		20.54	20.54	
Feb 2005	20.50	12.78	12.78		10.34	10.34	
Mar	20.60	11.20	12.88	0.30	8.76	10.44	-2.14
Apr	20.50	10.70	12.78	0.30	8.26	10.34	-2.14
May	19.70	10.92	11.98	0.30	8.48	9.54	-2.14
Jun	19.00	10.14	11.28	0.30	7.70	8.84	-2.14
Jul	17.40	8.55	9.68	0.30	6.11	7.24	-2.14
Aug	17.00	6.19	9.28	0.30	3.75	6.84	-2.14
Sep	18.30	6.73	10.58	0.30	4.29	8.14	-2.14
Oct	18.00	5.62	10.28	0.30	3.18	7.84	-2.14
Feb 2006	19.60	11.73	11.73		9.24	9.24	
Mar	18.90	11.03	11.03		8.54	8.54	
Apr	20.30	11.33	12.43	1.41	8.84	9.94	-1.08
May	20.10	10.43	12.23	1.41	7.94	9.74	-1.08
Jun	21.50	10.46	13.63	1.41	7.97	11.14	-1.08
Jul	23.30	11.54	15.43	1.41	9.05	12.94	-1.08
Aug	25.20	14.52	17.33	1.41	12.03	14.84	-1.08

**Oranges: Average Prices and Equivalent Returns, Florida
October 2003 - July 2006**

State, Month, and Year	F.O.B. Packed	Equiv. P.H.D.			Equiv. On-Tree		
		All	Fresh	Proc.	All	Fresh	Proc.
FL	All Oranges						
	<i>Dollars per box</i>	<i>Dollars per box</i>	<i>Dollars per box</i>	<i>Dollars per box</i>	<i>Dollars per box</i>	<i>Dollars per box</i>	<i>Dollars per box</i>
Oct 2003	16.80	5.96	8.65	3.18	3.83	6.45	1.13
Nov	15.50	4.18	7.35	3.94	2.12	5.15	1.89
Dec	14.70	4.21	6.55	4.08	2.15	4.35	2.03
Jan 2004	13.60	4.19	5.45	4.16	2.14	3.25	2.11
Feb	12.80	4.25	4.64	4.24	2.19	2.44	2.18
Mar	13.00	5.73	4.84	5.76	3.59	2.64	3.62
Apr	12.70	5.83	4.55	5.87	3.68	2.35	3.72
May	12.60	5.82	4.45	5.86	3.67	2.25	3.71
Jun	14.90	6.03	6.75	6.00	3.88	4.55	3.85
Nov	19.60	5.84	11.00	4.24	3.59	8.60	2.04
Dec	19.50	4.90	10.90	4.52	2.69	8.50	2.32
Jan 2005	17.40	4.86	8.80	4.72	2.65	6.40	2.52
Feb	15.60	4.96	7.00	4.91	2.76	4.60	2.71
Mar	16.00	5.93	7.35	5.83	3.68	4.95	3.59
Apr	16.00	6.55	7.40	6.52	4.30	5.00	4.27
May	17.50	6.69	8.90	6.62	4.43	6.50	4.37
Jun	19.00	6.67	10.40	6.51	4.41	8.00	4.26
Oct	24.90	13.23	15.90	2.70	10.69	13.30	0.40
Nov	18.80	5.98	9.80	4.69	3.60	7.20	2.39
Dec	18.10	5.87	9.10	5.60	3.55	6.50	3.30
Jan 2006	16.60	7.10	7.60	7.08	4.79	5.00	4.78
Feb	15.00	7.31	6.00	7.36	5.00	3.40	5.06
Mar	14.70	8.19	5.72	8.30	5.65	3.12	5.76
Apr	16.90	8.92	7.90	8.95	6.22	5.30	6.25
May	17.70	9.57	8.70	9.60	6.88	6.10	6.90
Jun	17.20	9.46	8.20	9.50	6.76	5.60	6.80
Jul	16.00	8.44	7.00	8.50	5.74	4.40	5.80

**Oranges: Average Prices and Equivalent Returns, Florida
October 2003 - July 2006**

State, Month, and Year	Equiv. P.H.D.			Equiv. On-Tree			
	F.O.B. Packed	All	Fresh	Proc.	All	Fresh	Proc.
FL	Early and Midseason						
	<i>Dollars per box</i>	<i>Dollars per box</i>	<i>Dollars per box</i>	<i>Dollars per box</i>	<i>Dollars per box</i>	<i>Dollars per box</i>	<i>Dollars per box</i>
Oct 2003	16.80	5.96	8.65	3.18	3.83	6.45	1.13
Nov	15.50	4.18	7.35	3.94	2.12	5.15	1.89
Dec	14.70	4.21	6.55	4.08	2.15	4.35	2.03
Jan 2004	13.60	4.19	5.45	4.16	2.14	3.25	2.11
Feb	12.00	4.24	3.85	4.24	2.18	1.65	2.19
Mar	12.30	5.75	4.15	5.76	3.70	1.95	3.71
Nov	19.60	5.84	11.00	4.24	3.59	8.60	2.04
Dec	19.50	4.90	10.90	4.52	2.69	8.50	2.32
Jan 2005	17.40	4.86	8.80	4.72	2.65	6.40	2.52
Feb	15.60	4.96	7.00	4.91	2.76	4.60	2.71
Mar	14.10	5.82	5.50	5.83	3.62	3.10	3.63
Oct	24.90	13.23	15.90	2.70	10.69	13.30	0.40
Nov	18.80	5.98	9.80	4.69	3.60	7.20	2.39
Dec	18.10	5.87	9.10	5.60	3.55	6.50	3.30
Jan 2006	16.60	7.10	7.60	7.08	4.79	5.00	4.78
Feb	15.00	7.31	6.00	7.36	5.00	3.40	5.06
Mar	14.50	7.78	5.50	7.85	5.48	2.90	5.55
FL	Valencias						
Feb 2004	13.30	4.37	5.15	4.24	2.21	2.95	2.09
Mar	13.00	5.73	4.85	5.76	3.57	2.65	3.61
Apr	12.70	5.83	4.55	5.87	3.68	2.35	3.72
May	12.60	5.82	4.45	5.86	3.67	2.25	3.71
Jun	14.90	6.03	6.75	6.00	3.88	4.55	3.85
Mar 2005	16.10	5.96	7.50	5.83	3.70	5.10	3.58
Apr	16.00	6.55	7.40	6.52	4.30	5.00	4.27
May	17.50	6.69	8.90	6.62	4.43	6.50	4.37
Jun	19.00	6.67	10.40	6.51	4.41	8.00	4.26
Mar 2006	14.80	8.46	5.80	8.60	5.76	3.20	5.90
Apr	16.90	8.92	7.90	8.95	6.22	5.30	6.25
May	17.70	9.57	8.70	9.60	6.88	6.10	6.90
Jun	17.20	9.46	8.20	9.50	6.76	5.60	6.80
Jul	16.00	8.44	7.00	8.50	5.74	4.40	5.80

**Oranges: Average Prices and Equivalent Returns, Texas
October 2003 - May 2006**

State, Month, and Year	Equiv. P.H.D.			Equiv. On-Tree			
	F.O.B. Packed	All	Fresh	Proc.	All	Fresh	Proc.
TX	All Oranges						
	<i>Dollars per box</i>	<i>Dollars per box</i>	<i>Dollars per box</i>	<i>Dollars per box</i>	<i>Dollars per box</i>	<i>Dollars per box</i>	<i>Dollars per box</i>
Oct 2003	23.80	12.47	13.71	2.55	11.13	12.36	1.25
Nov	16.50	5.70	6.41	2.55	4.36	5.06	1.25
Dec	15.00	4.18	4.91	2.55	2.84	3.56	1.25
Jan 2004	13.30	2.95	3.21	2.55	1.62	1.86	1.25
Feb	12.70	2.59	2.60	2.55	1.25	1.25	1.25
Mar	13.80	3.46	3.73	2.55	2.12	2.38	1.25
Apr	15.90	5.43	5.81	2.55	4.09	4.46	1.25
May	15.90	5.10	5.81	2.55	3.76	4.46	1.25
Oct	28.30	16.04	18.01	2.04	14.68	16.64	0.71
Nov	18.60	6.36	8.31	2.04	5.00	6.94	0.71
Dec	18.70	6.60	8.41	2.04	5.24	7.04	0.71
Jan 2005	19.30	6.81	9.01	2.04	5.45	7.64	0.71
Feb	18.60	6.10	8.31	2.04	4.74	6.94	0.71
Mar	18.90	6.77	8.62	2.04	5.41	7.25	0.71
Apr	19.20	6.74	8.87	2.04	5.38	7.50	0.71
May	14.60	3.66	4.31	2.04	2.30	2.94	0.71
Oct	20.50	9.75	10.00	2.04	8.35	8.60	0.68
Nov	19.00	7.60	8.50	2.04	6.20	7.10	0.68
Dec	18.60	7.25	8.10	3.40	5.85	6.70	2.04
Jan 2006	16.50	5.43	6.00	3.40	4.04	4.60	2.04
Feb	17.50	5.92	7.00	3.40	4.53	5.60	2.04
Mar	18.20	6.87	7.66	3.40	5.48	6.26	2.04
Apr	19.30	7.78	8.80	3.40	6.39	7.40	2.04
May	19.00	8.50	8.50		7.10	7.10	

**Oranges: Average Prices and Equivalent Returns, Texas
October 2003 - May 2006**

State, Month, and Year	Equiv. P.H.D.			Equiv. On-Tree			
	F.O.B. Packed	All	Fresh	Proc.	All	Fresh	Proc.
TX	Early and Midseason						
	<i>Dollars per box</i>	<i>Dollars per box</i>	<i>Dollars per box</i>	<i>Dollars per box</i>	<i>Dollars per box</i>	<i>Dollars per box</i>	<i>Dollars per box</i>
Oct 2003	23.80	12.47	13.71	2.55	11.13	12.36	1.25
Nov	16.50	5.70	6.41	2.55	4.36	5.06	1.25
Dec	15.00	4.18	4.91	2.55	2.84	3.56	1.25
Jan 2004	13.30	2.95	3.21	2.55	1.62	1.86	1.25
Feb	12.60	2.52	2.51	2.55	1.19	1.16	1.25
Mar	12.20	2.12	2.11	2.55	0.77	0.76	1.25
Oct	28.30	16.04	18.01	2.04	14.68	16.64	0.71
Nov	18.60	6.36	8.31	2.04	5.00	6.94	0.71
Dec	18.70	6.60	8.41	2.04	5.24	7.04	0.71
Jan 2005	19.30	6.81	9.01	2.04	5.45	7.64	0.71
Feb	18.60	6.10	8.31	2.04	4.74	6.94	0.71
Mar	18.90	7.02	8.61	2.04	5.66	7.24	0.71
Apr	18.10	6.61	7.81	2.04	5.25	6.44	0.71
Oct	20.50	9.75	10.00	2.04	8.35	8.60	0.68
Nov	19.00	7.60	8.50	2.04	6.20	7.10	0.68
Dec	18.60	7.25	8.10	3.40	5.85	6.70	2.04
Jan 2006	16.50	5.43	6.00	3.40	4.04	4.60	2.04
Feb	17.50	5.92	7.00	3.40	4.53	5.60	2.04
Mar	17.80	6.52	7.30	3.40	5.13	5.90	2.04
TX	Valencias						
Feb 2004	15.50	3.98	5.41	2.55	2.66	4.06	1.25
Mar	15.50	4.36	5.41	2.55	3.03	4.06	1.25
Apr	15.90	5.43	5.81	2.55	4.09	4.46	1.25
May	15.90	5.10	5.81	2.55	3.76	4.46	1.25
Mar 2005	19.00	5.10	8.71	2.04	3.75	7.34	0.71
Apr	19.60	6.78	9.31	2.04	5.43	7.94	0.71
May	14.60	3.66	4.31	2.04	2.30	2.94	0.71
Mar 2006	19.20	7.95	8.70	3.40	6.56	7.30	2.04
Apr	19.30	7.78	8.80	3.40	6.39	7.40	2.04
May	19.00	8.50	8.50		7.10	7.10	

**Grapefruit: Average Prices and Equivalent Returns, United States
October 2003 - August 2006**

State, Month, and Year	F.O.B. Packed	Equiv. P.H.D.			Equiv. On-Tree		
		All	Fresh	Proc.	All	Fresh	Proc.
US	All Grapefruit						
	<i>Dollars per box</i>	<i>Dollars per box</i>	<i>Dollars per box</i>	<i>Dollars per box</i>	<i>Dollars per box</i>	<i>Dollars per box</i>	<i>Dollars per box</i>
Oct 2003	19.50	9.18	11.55	2.78	7.23	9.72	0.51
Nov	16.80	6.72	8.74	2.82	4.70	6.86	0.52
Dec	16.20	6.06	8.13	2.74	4.05	6.26	0.49
Jan 2004	16.10	5.51	8.03	2.75	3.44	6.14	0.48
Feb	16.30	5.14	8.37	2.65	3.07	6.52	0.41
Mar	17.20	4.85	9.33	2.78	2.72	7.46	0.54
Apr	16.80	4.36	8.66	2.82	2.26	6.75	0.64
May	18.10	5.71	9.85	2.54	3.46	7.54	0.34
Jun	20.00	9.75	11.29	-0.27	7.01	8.55	-3.01
Jul	19.20	8.95	10.49	-0.27	6.21	7.75	-3.01
Aug	19.60	8.58	10.89	-0.27	5.84	8.15	-3.01
Sep	26.10	15.76	17.39	-0.27	13.02	14.65	-3.01
Oct	27.10	15.45	18.56	4.52	12.88	16.05	1.70
Nov	30.80	18.28	22.17	5.70	15.93	19.93	2.98
Dec	29.70	16.71	21.03	6.31	14.42	18.87	3.74
Jan 2005	30.40	15.97	21.61	5.58	13.74	19.41	3.29
Feb	29.80	14.17	21.07	5.93	11.96	18.93	3.64
Mar	29.20	12.47	20.44	5.81	10.24	18.32	3.48
Apr	30.10	12.51	21.12	4.39	10.37	18.91	2.30
May	29.30	13.23	20.12	1.85	11.16	17.78	0.21
Jun	29.90	18.13	21.02	-0.28	15.33	18.22	-3.08
Jul	28.40	16.63	19.52	-0.28	13.83	16.72	-3.08
Aug	26.30	13.73	17.42	-0.28	10.93	14.62	-3.08
Sep	30.40	19.57	21.52	-0.28	16.77	18.72	-3.08
Oct	27.40	13.24	18.49	5.55	10.69	16.20	2.62
Nov	25.30	11.31	16.17	6.37	8.83	13.99	3.56
Dec	25.00	12.41	16.00	7.38	10.02	13.84	4.69
Jan 2006	26.30	13.35	17.09	8.82	11.06	15.01	6.28
Feb	25.20	12.31	16.06	9.42	9.92	14.01	6.76
Mar	23.80	10.68	14.84	8.65	8.18	12.76	5.93
Apr	23.40	10.58	14.32	8.47	8.12	12.15	5.85
May	27.00	13.79	17.60	2.34	11.41	15.13	0.24
Jun	25.00	13.84	15.90	-0.29	10.98	13.04	-3.15
Jul	25.50	14.02	16.44	-0.29	11.16	13.58	-3.15
Aug	24.70	12.28	15.64	-0.29	9.42	12.78	-3.15

**Grapefruit: Average Prices and Equivalent Returns, Arizona
October 2003 - June 2006**

State, Month, and Year	F.O.B. Packed	Equiv. P.H.D.			Equiv. On-Tree		
		All	Fresh	Proc.	All	Fresh	Proc.
AZ	All Grapefruit						
	<i>Dollars per box</i>	<i>Dollars per box</i>	<i>Dollars per box</i>	<i>Dollars per box</i>	<i>Dollars per box</i>	<i>Dollars per box</i>	<i>Dollars per box</i>
Oct 2003	19.50	10.79	10.79		8.05	8.05	
Nov	14.20	5.49	5.49		2.75	2.75	
Dec	15.20	6.49	6.49		3.75	3.75	
Jan 2004	16.00	7.29	7.29		4.55	4.55	
Feb	15.30	6.59	6.59		3.85	3.85	
Mar	14.80	6.09	6.09		3.35	3.35	
Apr	15.40	6.69	6.69		3.95	3.95	
May	17.10	8.39	8.39		5.65	5.65	
Dec	27.10	18.22	18.22		15.42	15.42	
Jan 2005	21.50	12.62	12.62		9.82	9.82	
Feb	15.20	6.32	6.32		3.52	3.52	
Mar	21.30	12.42	12.42		9.62	9.62	
Apr	22.30	13.42	13.42		10.62	10.62	
May	22.70	13.82	13.82		11.02	11.02	
Nov	23.20	14.14	14.14		11.28	11.28	
Dec	22.20	13.14	13.14		10.28	10.28	
Jan 2006	24.80	15.74	15.74		12.88	12.88	
Feb	21.90	12.84	12.84		9.98	9.98	
Mar	17.60	8.54	8.54		5.68	5.68	
Apr	24.50	15.44	15.44		12.58	12.58	
May	22.70	13.64	13.64		10.78	10.78	
Jun	22.70	13.64	13.64		10.78	10.78	

**Grapefruit: Average Prices and Equivalent Returns, California
November 2003 - August 2006**

State, Month, and Year	F.O.B. Packed	Equiv. P.H.D.			Equiv. On-Tree		
		All	Fresh	Proc.	All	Fresh	Proc.
CA							
All Grapefruit							
	<i>Dollars per box</i>	<i>Dollars per box</i>	<i>Dollars per box</i>	<i>Dollars per box</i>	<i>Dollars per box</i>	<i>Dollars per box</i>	<i>Dollars per box</i>
Nov 2003	20.20	9.75	11.49	-0.27	7.01	8.75	-3.01
Dec	18.80	9.42	10.09	-0.27	6.68	7.35	-3.01
Jan 2004	19.00	9.31	10.29	-0.27	6.57	7.55	-3.01
Feb	17.60	8.61	8.89	-0.27	5.87	6.15	-3.01
Mar	14.50	5.45	5.79	-0.27	2.71	3.05	-3.01
Apr	16.80	7.85	8.09	-0.27	5.11	5.35	-3.01
May	19.90	9.87	11.19	-0.27	7.13	8.45	-3.01
Jun	20.00	9.75	11.29	-0.27	7.01	8.55	-3.01
Jul	19.20	8.95	10.49	-0.27	6.21	7.75	-3.01
Aug	19.60	8.58	10.89	-0.27	5.84	8.15	-3.01
Sep	26.10	15.76	17.39	-0.27	13.02	14.65	-3.01
Oct	22.60	11.81	13.89	-0.27	9.07	11.15	-3.01
Nov	24.80	13.37	15.92	-0.28	10.57	13.12	-3.08
Dec	22.30	12.39	13.42	-0.28	9.59	10.62	-3.08
Jan 2005	23.70	13.34	14.82	-0.28	10.54	12.02	-3.08
Feb	22.60	13.11	13.72	-0.28	10.31	10.92	-3.08
Mar	21.30	11.57	12.42	-0.28	8.77	9.62	-3.08
Apr	29.90	20.31	21.02	-0.28	17.51	18.22	-3.08
May	30.20	18.75	21.32	-0.28	15.95	18.52	-3.08
Jun	29.90	18.13	21.02	-0.28	15.33	18.22	-3.08
Jul	28.40	16.63	19.52	-0.28	13.83	16.72	-3.08
Aug	26.30	13.73	17.42	-0.28	10.93	14.62	-3.08
Sep	30.40	19.57	21.52	-0.28	16.77	18.72	-3.08
Oct	26.40	15.15	17.52	-0.28	12.35	14.72	-3.08
Nov	21.90	10.75	12.84	-0.29	7.89	9.98	-3.15
Dec	20.10	10.15	11.04	-0.29	7.29	8.18	-3.15
Jan 2006	20.40	10.25	11.34	-0.29	7.39	8.48	-3.15
Feb	19.00	9.50	9.94	-0.29	6.64	7.08	-3.15
Mar	18.30	8.70	9.24	-0.29	5.84	6.38	-3.15
Apr	23.20	13.63	14.14	-0.29	10.77	11.28	-3.15
May	27.60	16.30	18.54	-0.29	13.44	15.68	-3.15
Jun	25.10	13.86	16.04	-0.29	11.00	13.18	-3.15
Jul	25.50	14.02	16.44	-0.29	11.16	13.58	-3.15
Aug	24.70	12.28	15.64	-0.29	9.42	12.78	-3.15

**Grapefruit: Average Prices and Equivalent Returns, Florida
October 2003 - May 2006**

State, Month, and Year	F.O.B. Packed	Equiv. P.H.D.			Equiv. On-Tree		
		All	Fresh	Proc.	All	Fresh	Proc.
FL	All Grapefruit						
	<i>Dollars per box</i>	<i>Dollars per box</i>	<i>Dollars per box</i>	<i>Dollars per box</i>	<i>Dollars per box</i>	<i>Dollars per box</i>	<i>Dollars per box</i>
Oct 2003	19.10	9.08	11.52	2.98	7.02	9.58	0.60
Nov	16.40	6.64	8.83	3.05	4.54	6.89	0.68
Dec	16.00	6.07	8.43	2.97	3.95	6.49	0.61
Jan 2004	16.10	5.53	8.51	2.94	3.37	6.57	0.59
Feb	16.60	5.31	9.06	2.78	3.15	7.13	0.46
Mar	17.50	5.01	9.94	2.91	2.81	8.00	0.60
Apr	17.10	4.43	9.56	3.04	2.19	7.62	0.72
May	16.30	4.65	8.67	2.94	2.42	6.73	0.58
Oct	30.60	17.76	22.37	6.77	15.23	19.99	3.88
Nov	31.00	18.74	22.80	7.12	16.21	20.42	4.14
Dec	29.40	17.04	21.20	8.00	14.48	18.83	5.01
Jan 2005	30.60	17.42	22.38	8.51	14.84	20.01	5.57
Feb	29.50	15.54	21.31	8.71	12.91	18.93	5.77
Mar	29.70	13.96	21.57	8.15	11.29	19.20	5.24
Apr	30.40	13.47	22.26	7.30	10.79	19.89	4.39
May	26.80	13.54	18.68	7.38	10.82	16.31	4.24
Oct	25.60	11.08	17.19	6.00	8.44	14.90	3.06
Nov	24.40	10.20	15.81	6.96	7.54	13.53	4.07
Dec	25.00	12.31	16.51	8.38	9.70	14.23	5.47
Jan 2006	26.80	14.21	18.13	10.75	11.63	15.87	7.87
Feb	25.90	12.92	17.32	10.34	10.25	15.05	7.44
Mar	23.30	10.74	14.78	9.19	8.02	12.50	6.30
Apr	21.70	10.33	13.30	9.31	7.60	11.01	6.43
May	21.00	2.85	11.90	2.50	0.06	9.69	-0.32

**Grapefruit: Average Prices and Equivalent Returns, Florida
October 2003 - May 2006**

State, Month, and Year	F.O.B. Packed	Equiv. P.H.D.			Equiv. On-Tree		
		All	Fresh	Proc.	All	Fresh	Proc.
FL							
White Seedless							
	<i>Dollars per box</i>	<i>Dollars per box</i>	<i>Dollars per box</i>	<i>Dollars per box</i>	<i>Dollars per box</i>	<i>Dollars per box</i>	<i>Dollars per box</i>
Oct 2003	19.60	8.48	12.00	2.82	6.44	10.10	0.57
Nov	16.90	5.97	9.30	2.83	3.89	7.40	0.58
Dec	16.50	5.41	8.90	2.95	3.31	7.00	0.70
Jan 2004	16.40	4.63	8.80	2.68	2.50	6.90	0.43
Feb	16.50	4.08	8.90	2.61	1.91	7.00	0.36
Mar	17.60	3.62	10.00	2.76	1.41	8.10	0.51
Apr	17.60	3.14	10.00	2.86	0.90	8.10	0.61
May	15.30	2.93	7.70	2.71	0.70	5.80	0.46
Oct	32.70	17.08	24.22	7.30	14.60	21.82	4.69
Nov	32.80	18.82	24.32	7.68	16.35	21.92	5.07
Dec	32.40	17.97	23.92	8.54	15.49	21.52	5.93
Jan 2005	32.90	17.40	24.42	8.60	14.91	22.02	5.99
Feb	30.40	13.34	21.92	8.63	10.81	19.52	6.02
Mar	31.20	9.95	22.72	8.36	7.36	20.32	5.75
Apr	30.30	8.94	21.82	8.00	6.34	19.42	5.39
Nov	22.60	8.76	13.50	7.20	6.09	11.29	4.38
Dec	28.00	12.83	18.90	8.90	10.25	16.69	6.08
Jan 2006	28.70	14.41	19.60	11.30	11.82	17.39	8.48
Feb	28.40	13.20	19.30	11.30	10.53	17.09	8.48
Mar	28.10	11.60	19.00	10.30	8.87	16.79	7.48
Apr	22.60	10.60	13.50	10.50	7.80	11.29	7.68
May	21.00	2.85	11.90	2.50	0.06	9.69	-0.32
FL							
Colored Seedless							
Oct 2003	19.00	9.22	11.42	3.03	7.15	9.47	0.61
Nov	16.30	6.85	8.72	3.15	4.74	6.77	0.73
Dec	15.90	6.30	8.32	2.98	4.17	6.37	0.56
Jan 2004	16.00	5.99	8.42	3.14	3.83	6.47	0.72
Feb	16.70	6.33	9.12	3.02	4.16	7.17	0.60
Mar	17.50	6.29	9.92	3.15	4.09	7.97	0.73
Apr	17.10	5.59	9.52	3.28	3.35	7.57	0.86
May	16.30	5.38	8.72	3.09	3.15	6.77	0.67
Oct	29.80	18.09	21.68	6.30	15.55	19.31	3.16
Nov	30.50	18.72	22.38	6.87	16.17	20.01	3.73
Dec	28.60	16.76	20.48	7.78	14.17	18.11	4.64
Jan 2005	29.80	17.43	21.68	8.46	14.81	19.31	5.32
Feb	29.30	16.34	21.18	8.76	13.67	18.81	5.62
Mar	29.60	15.55	21.48	7.98	12.85	19.11	4.84
Apr	30.40	15.20	22.28	6.75	12.48	19.91	3.61
May	26.80	13.54	18.68	7.38	10.82	16.31	4.24
Oct	25.60	11.08	17.19	6.00	8.44	14.90	3.06
Nov	24.90	10.94	16.49	6.80	8.28	14.20	3.86
Dec	24.40	12.16	15.99	8.20	9.55	13.70	5.26
Jan 2006	25.80	14.07	17.39	10.20	11.48	15.10	7.26
Feb	25.20	12.77	16.79	9.70	10.12	14.50	6.76
Mar	22.20	10.27	13.79	8.40	7.56	11.50	5.46
Apr	21.70	10.18	13.29	8.30	7.48	11.00	5.36

**Grapefruit: Average Prices and Equivalent Returns, Texas
October 2003 - May 2006**

State, Month, and Year	Equiv. P.H.D.			Equiv. On-Tree			
	F.O.B. Packed	All	Fresh	Proc.	All	Fresh	Proc.
TX	All Grapefruit						
	<i>Dollars per box</i>	<i>Dollars per box</i>	<i>Dollars per box</i>	<i>Dollars per box</i>	<i>Dollars per box</i>	<i>Dollars per box</i>	<i>Dollars per box</i>
Oct 2003	21.80	9.71	11.81	0.80	8.55	10.64	-0.32
Nov	17.10	5.90	7.11	0.80	4.74	5.94	-0.32
Dec	16.10	4.81	6.11	0.80	3.66	4.94	-0.32
Jan 2004	14.60	3.53	4.61	0.80	2.37	3.44	-0.32
Feb	14.30	3.04	4.31	0.80	1.89	3.14	-0.32
Mar	15.30	2.89	5.31	0.80	1.75	4.14	-0.32
Apr	16.00	2.95	6.01	1.20	1.81	4.84	0.08
May	17.80	2.52	7.81	1.20	1.39	6.64	0.08
Oct	43.30	29.36	33.11	1.20	28.17	31.92	0.06
Nov	35.10	20.18	24.91	1.20	19.00	23.72	0.06
Dec	34.20	17.00	24.01	1.20	15.83	22.82	0.06
Jan 2005	35.80	14.12	25.61	1.20	12.95	24.42	0.06
Feb	34.60	11.65	24.41	1.20	10.48	23.22	0.06
Mar	32.10	9.44	21.91	1.20	8.28	20.72	0.06
Apr	30.00	7.68	19.81	1.20	6.52	18.62	0.06
May	28.80	7.74	18.61	1.20	6.58	17.42	0.06
Oct	35.40	25.01	25.01		23.80	23.80	
Nov	30.90	17.35	20.51	2.00	16.15	19.30	0.84
Dec	29.70	14.40	19.31	2.00	13.21	18.10	0.84
Jan 2006	28.70	12.16	18.31	2.00	10.97	17.10	0.84
Feb	25.50	10.51	15.11	4.00	9.32	13.90	2.84
Mar	27.00	10.65	16.61	4.00	9.47	15.40	2.84
Apr	27.10	10.01	16.71	4.00	8.83	15.50	2.84
May	25.70	10.95	15.31	4.00	9.76	14.10	2.84

**Lemons: Average Prices and Equivalent Returns, United States
August 2003 - July 2006**

State, Month, and Year	Equiv. P.H.D.			Equiv. On-Tree			
	F.O.B. Packed	All	Fresh	Proc.	All	Fresh	Proc.
US	All Lemons						
	<i>Dollars per box</i>	<i>Dollars per box</i>	<i>Dollars per box</i>	<i>Dollars per box</i>	<i>Dollars per box</i>	<i>Dollars per box</i>	<i>Dollars per box</i>
Aug 2003	32.30	17.50	22.81	0.20	12.39	17.70	-4.91
Sep	28.50	15.33	18.98	0.20	10.22	13.87	-4.91
Oct	25.60	13.02	16.07	0.20	7.91	10.96	-4.91
Nov	24.80	10.17	15.34	0.20	5.06	10.23	-4.91
Dec	23.60	8.40	14.09	0.20	3.29	8.98	-4.91
Jan 2004	22.80	7.17	13.28	0.20	2.06	8.17	-4.91
Feb	24.30	8.41	14.83	0.20	3.30	9.72	-4.91
Mar	28.40	11.86	18.91	0.20	6.75	13.80	-4.91
Apr	31.00	14.19	21.51	0.20	9.08	16.40	-4.91
May	31.70	16.92	22.21	0.20	11.81	17.10	-4.91
Jun	34.10	19.42	24.61	0.20	14.31	19.50	-4.91
Jul	35.60	19.15	26.11	0.20	14.04	21.00	-4.91
Aug	35.20	23.07	25.52	0.18	17.86	20.31	-5.03
Sep	34.60	22.35	24.94	0.18	17.14	19.73	-5.03
Oct	32.80	20.86	23.08	0.18	15.65	17.87	-5.03
Nov	31.30	14.46	21.60	0.18	9.25	16.39	-5.03
Dec	31.40	12.60	21.74	0.18	7.39	16.53	-5.03
Jan 2005	31.20	12.37	21.54	0.18	7.16	16.33	-5.03
Feb	30.30	11.07	20.61	0.18	5.86	15.40	-5.03
Mar	29.90	10.00	20.21	0.18	4.79	15.00	-5.03
Apr	32.60	10.85	22.92	0.18	5.64	17.71	-5.03
May	41.60	9.37	31.92	0.18	4.16	26.71	-5.03
Jun	36.20	18.07	26.52	0.18	12.86	21.31	-5.03
Jul	35.40	15.96	25.72	0.18	10.75	20.51	-5.03
Aug	30.90	17.62	21.03	0.16	12.31	15.72	-5.15
Sep	28.60	16.19	18.73	0.16	10.88	13.42	-5.15
Oct	27.30	14.63	17.38	-0.40	9.32	12.07	-5.71
Nov	27.50	13.45	17.66	-0.40	8.14	12.35	-5.71
Dec	27.50	10.89	17.63	-0.40	5.58	12.32	-5.71
Jan 2006	26.20	9.09	16.28	-0.40	3.78	10.97	-5.71
Feb	28.60	14.73	18.76	-0.40	9.42	13.45	-5.71
Mar	31.20	14.75	21.31	-0.40	9.44	16.00	-5.71
Apr	39.00	18.81	29.13	-0.40	13.50	23.82	-5.71
May	43.20	20.40	33.33	-0.40	15.09	28.02	-5.71
Jun	42.80	22.29	32.93	-0.40	16.98	27.62	-5.71
Jul	41.40	24.19	31.53	-0.40	18.88	26.22	-5.71

**Lemons: Average Prices and Equivalent Returns, Arizona
September 2003- March 2006**

State, Month, and Year	Equiv. P.H.D.			Equiv. On-Tree			
	F.O.B. Packed	All	Fresh	Proc.	All	Fresh	Proc.
AZ	All Lemons						
	<i>Dollars per box</i>	<i>Dollars per box</i>	<i>Dollars per box</i>	<i>Dollars per box</i>	<i>Dollars per box</i>	<i>Dollars per box</i>	<i>Dollars per box</i>
Sep 2003	28.80	19.31	19.31		14.20	14.20	
Oct	26.70	17.21	17.21		12.10	12.10	
Nov	24.60	10.25	15.11	0.20	5.14	10.00	-4.91
Dec	23.10	8.80	13.61	0.20	3.69	8.50	-4.91
Jan 2004	22.90	7.39	13.41	0.20	2.28	8.30	-4.91
Feb	22.60	5.88	13.11	0.20	0.77	8.00	-4.91
Sep	35.20	25.52	25.52		20.31	20.31	
Oct	33.20	23.52	23.52		18.31	18.31	
Nov	30.90	11.89	21.22	0.18	6.68	16.01	-5.03
Dec	30.60	10.14	20.92	0.18	4.93	15.71	-5.03
Jan 2005	29.90	9.61	20.22	0.18	4.40	15.01	-5.03
Feb	28.10	6.45	18.42	0.18	1.24	13.21	-5.03
Mar	27.40	8.37	17.72	0.18	3.16	12.51	-5.03
Sep	29.10	19.23	19.23		13.92	13.92	
Oct	27.70	17.83	17.83		12.52	12.52	
Nov	28.00	11.89	18.13	-0.40	6.58	12.82	-5.71
Dec	26.10	7.67	16.23	-0.40	2.36	10.92	-5.71
Jan 2006	24.60	6.30	14.73	-0.40	0.99	9.42	-5.71
Feb	23.80	4.85	13.93	-0.40	-0.46	8.62	-5.71
Mar	26.50	5.52	16.63	-0.40	0.21	11.32	-5.71

**Lemons: Average Prices and Equivalent Returns, California
August 2003 - July 2006**

State, Month, and Year	Equiv. P.H.D.			Equiv. On-Tree			
	F.O.B. Packed	All	Fresh	Proc.	All	Fresh	Proc.
CA	All Lemons						
	<i>Dollars per box</i>	<i>Dollars per box</i>	<i>Dollars per box</i>	<i>Dollars per box</i>	<i>Dollars per box</i>	<i>Dollars per box</i>	<i>Dollars per box</i>
Aug 2003	32.30	17.50	22.81	0.20	12.39	17.70	-4.91
Sep	28.40	14.73	18.91	0.20	9.62	13.80	-4.91
Oct	24.90	11.25	15.41	0.20	6.14	10.30	-4.91
Nov	25.00	10.12	15.51	0.20	5.01	10.40	-4.91
Dec	23.90	8.17	14.41	0.20	3.06	9.30	-4.91
Jan 2004	22.70	7.06	13.21	0.20	1.95	8.10	-4.91
Feb	24.60	8.95	15.11	0.20	3.84	10.00	-4.91
Mar	28.40	11.86	18.91	0.20	6.75	13.80	-4.91
Apr	31.00	14.19	21.51	0.20	9.08	16.40	-4.91
May	31.70	16.92	22.21	0.20	11.81	17.10	-4.91
Jun	34.10	19.42	24.61	0.20	14.31	19.50	-4.91
Jul	35.60	19.15	26.11	0.20	14.04	21.00	-4.91
Aug	35.20	23.07	25.52	0.18	17.86	20.31	-5.03
Sep	34.60	22.25	24.92	0.18	17.04	19.71	-5.03
Oct	32.60	20.03	22.92	0.18	14.82	17.71	-5.03
Nov	31.40	15.47	21.72	0.18	10.26	16.51	-5.03
Dec	31.70	13.68	22.02	0.18	8.47	16.81	-5.03
Jan 2005	31.50	13.11	21.82	0.18	7.90	16.61	-5.03
Feb	30.40	11.45	20.72	0.18	6.24	15.51	-5.03
Mar	29.90	10.01	20.22	0.18	4.80	15.01	-5.03
Apr	32.60	10.85	22.92	0.18	5.64	17.71	-5.03
May	41.60	9.37	31.92	0.18	4.16	26.71	-5.03
Jun	36.20	18.07	26.52	0.18	12.86	21.31	-5.03
Jul	35.40	15.96	25.72	0.18	10.75	20.51	-5.03
Aug	30.90	17.62	21.03	0.16	12.31	15.72	-5.15
Sep	28.50	15.69	18.63	0.16	10.38	13.32	-5.15
Oct	27.00	13.24	17.13	-0.40	7.93	11.82	-5.71
Nov	27.30	14.43	17.43	-0.40	9.12	12.12	-5.71
Dec	28.00	12.56	18.13	-0.40	7.25	12.82	-5.71
Jan 2006	26.60	10.23	16.73	-0.40	4.92	11.42	-5.71
Feb	29.10	17.06	19.23	-0.40	11.75	13.92	-5.71
Mar	31.20	14.85	21.33	-0.40	9.54	16.02	-5.71
Apr	39.00	18.81	29.13	-0.40	13.50	23.82	-5.71
May	43.20	20.40	33.33	-0.40	15.09	28.02	-5.71
Jun	42.80	22.29	32.93	-0.40	16.98	27.62	-5.71
Jul	41.40	24.19	31.53	-0.40	18.88	26.22	-5.71

**Tangerines: Average Prices and Equivalent Returns, United States
and Arizona, October 2003 - May 2006**

State, Month, and Year	Equiv. P.H.D.			Equiv. On-Tree			
	F.O.B. Packed	All	Fresh	Proc.	All	Fresh	Proc.
US							
Tangerines							
	<i>Dollars per box</i>	<i>Dollars per box</i>	<i>Dollars per box</i>	<i>Dollars per box</i>	<i>Dollars per box</i>	<i>Dollars per box</i>	<i>Dollars per box</i>
Oct 2003	22.90	9.65	13.18	2.23	6.07	9.93	-2.07
Nov	24.80	10.64	15.17	2.64	7.04	11.94	-1.63
Dec	25.30	11.94	15.85	2.68	8.44	12.64	-1.51
Jan 2004	27.30	14.13	18.03	2.26	10.77	14.87	-1.68
Feb	22.90	10.44	13.56	2.10	7.10	10.39	-1.70
Mar	23.60	11.65	14.33	2.75	8.30	11.17	-1.19
Apr	27.60	14.65	18.03	3.51	11.20	14.82	-0.72
May	20.00	10.43	10.75	5.70	7.21	7.60	1.40
Oct	29.20	16.60	19.09	2.44	13.32	15.90	-1.34
Nov	29.60	15.39	19.64	2.38	12.07	16.46	-1.35
Dec	29.40	16.02	19.57	2.73	12.73	16.40	-1.01
Jan 2005	29.70	16.32	20.27	2.46	13.10	17.12	-1.00
Feb	28.50	15.71	18.97	4.33	12.47	15.82	0.82
Mar	29.00	16.08	19.32	4.77	12.81	16.15	1.17
Apr	32.90	19.67	22.97	6.40	16.37	19.79	2.63
May	28.00	19.12	19.12		16.00	16.00	
Sep	32.00	21.50	21.50		18.10	18.10	
Oct	33.70	19.32	23.48	2.80	15.81	20.12	-1.30
Nov	33.20	17.17	23.12	2.94	13.66	19.78	-1.00
Dec	30.40	16.15	20.48	2.97	12.69	17.18	-0.96
Jan 2006	29.00	13.85	19.15	3.81	10.39	15.85	0.04
Feb	26.60	13.57	17.05	4.03	10.21	13.79	0.38
Mar	25.00	11.42	15.09	4.81	7.96	11.78	1.06
Apr	24.70	10.04	14.59	4.60	6.52	11.25	0.87
May	22.30	9.49	11.95	5.69	5.88	8.57	1.75
AZ							
Tangerines							
Nov 2003	28.60	19.89	19.89		16.83	16.83	
Dec	27.40	15.71	18.69	-0.24	12.65	15.63	-3.30
Jan 2004	26.80	12.88	18.09	-0.24	9.82	15.03	-3.30
Feb	21.80	7.18	13.09	-0.24	4.12	10.03	-3.30
Mar	20.70	8.23	11.99	-0.24	5.17	8.93	-3.30
Nov	30.40	21.52	21.52		18.40	18.40	
Dec	28.40	17.87	19.52	-0.26	14.75	16.40	-3.38
Jan 2005	26.00	13.00	17.12	-0.26	9.88	14.00	-3.38
Feb	26.10	11.76	17.22	-0.26	8.64	14.10	-3.38
Mar	17.10	6.75	8.22	-0.26	3.63	5.10	-3.38
Apr	11.80	2.92	2.92		-0.20	-0.20	
Nov	32.20	23.14	23.14		19.96	19.96	
Dec	29.30	14.76	20.24	0.28	11.58	17.06	-2.90
Jan 2006	28.70	12.31	19.64	0.28	9.13	16.46	-2.90
Feb	24.10	10.30	15.04	0.28	7.12	11.86	-2.90
Mar	23.70	7.63	14.64	0.28	4.45	11.46	-2.90

**Tangerines: Average Prices and Equivalent Returns, California
and Florida, September 2003 - May 2006**

State, Month, and Year	Equiv. P.H.D.				Equiv. On-Tree		
	F.O.B. Packed	All	Fresh	Proc.	All	Fresh	Proc.
CA							
Tangerines							
	<i>Dollars per box</i>	<i>Dollars per box</i>	<i>Dollars per box</i>	<i>Dollars per box</i>	<i>Dollars per box</i>	<i>Dollars per box</i>	<i>Dollars per box</i>
Oct 2003	42.80	34.09	34.09		31.03	31.03	
Nov	33.80	22.78	25.09	0.32	19.72	22.03	-2.74
Dec	29.90	18.55	21.19	0.32	15.49	18.13	-2.74
Jan 2004	27.00	16.07	18.29	0.32	13.01	15.23	-2.74
Feb	23.90	13.30	15.19	0.32	10.24	12.13	-2.74
Mar	24.80	13.99	16.09	0.32	10.93	13.03	-2.74
Apr	25.70	15.45	16.99	0.32	12.39	13.93	-2.74
May	5.20	-3.51	-3.51		-6.57	-6.57	
Oct	43.50	33.41	34.62	0.30	30.29	31.50	-2.82
Nov	37.10	24.41	28.22	0.30	21.29	25.10	-2.82
Dec	33.10	22.60	24.22	0.30	19.48	21.10	-2.82
Jan 2005	28.20	15.96	19.32	0.30	12.84	16.20	-2.82
Feb	28.20	16.10	19.32	0.30	12.98	16.20	-2.82
Mar	28.20	16.16	19.32	0.30	13.04	16.20	-2.82
Apr	31.50	21.57	22.62	0.30	18.45	19.50	-2.82
May	28.00	19.12	19.12		16.00	16.00	
Oct	40.90	31.84	31.84		28.66	28.66	
Nov	40.00	25.26	30.94	0.28	22.08	27.76	-2.90
Dec	34.30	22.46	25.24	0.28	19.28	22.06	-2.90
Jan 2006	27.10	13.78	18.04	0.28	10.60	14.86	-2.90
Feb	27.20	14.50	18.14	0.28	11.32	14.96	-2.90
Mar	27.40	12.49	18.34	0.28	9.31	15.16	-2.90
Apr	27.00	7.92	17.94	0.28	4.74	14.76	-2.90
May	20.40	4.70	11.34	0.28	1.52	8.16	-2.90
FL							
Tangerines							
Sep 2003	23.00	10.73	13.25	2.10	7.25	10.00	-2.20
Oct	22.50	9.32	12.75	2.23	5.72	9.50	-2.07
Nov	23.70	9.61	13.95	2.69	5.96	10.70	-1.61
Dec	24.10	10.51	14.35	2.92	6.90	11.10	-1.38
Jan 2004	27.60	13.43	17.85	3.18	9.87	14.60	-1.12
Feb	22.60	10.26	12.85	3.60	6.72	9.60	-0.70
Mar	23.00	10.55	13.25	3.80	7.00	10.00	-0.50
Apr	28.00	14.52	18.25	3.70	11.00	15.00	-0.60
May	36.30	23.98	26.55	5.70	20.60	23.30	1.40
Oct	27.00	14.36	16.70	2.50	11.06	13.50	-1.30
Nov	27.50	13.21	17.20	2.63	9.84	14.00	-1.17
Dec	28.00	13.78	17.70	3.00	10.42	14.50	-0.80
Jan 2005	32.70	17.60	22.40	4.73	14.24	19.20	0.93
Feb	29.00	15.61	18.70	7.30	12.25	15.50	3.50
Mar	30.00	16.32	19.70	6.60	12.96	16.50	2.80
Apr	34.00	19.59	23.70	6.70	16.24	20.50	2.90
Sep	32.00	21.50	21.50		18.10	18.10	
Oct	32.00	17.06	21.50	2.80	13.49	18.10	-1.30
Nov	30.10	14.18	19.60	3.48	10.55	16.20	-0.62
Dec	28.00	13.16	17.50	3.60	9.54	14.10	-0.50
Jan 2006	30.20	14.29	19.70	5.77	10.62	16.30	1.67
Feb	26.30	13.07	15.80	7.70	9.44	12.40	3.60
Mar	23.30	10.90	12.80	7.70	7.24	9.40	3.60
Apr	23.90	11.07	13.40	7.60	7.39	10.00	3.50
May	22.50	10.09	12.00	6.80	6.43	8.60	2.70

**Tangelos and Temples: Average Prices and Equivalent Returns,
Florida, November 2003 - April 2006**

State, Month, and Year	Equiv. P.H.D.			Equiv. On-Tree			
	F.O.B. Packed	All	Fresh	Proc.	All	Fresh	Proc.
FL	Tangelos						
	<i>Dollars per box</i>	<i>Dollars per box</i>	<i>Dollars per box</i>	<i>Dollars per box</i>	<i>Dollars per box</i>	<i>Dollars per box</i>	<i>Dollars per box</i>
Nov 2003	23.00	10.29	14.75	2.35	7.78	12.35	-0.35
Dec	22.00	10.11	13.75	2.60	7.61	11.35	-0.10
Jan 2004	35.00	11.59	26.75	2.60	9.00	24.35	-0.10
Feb	35.00	5.91	26.75	2.60	3.26	24.35	-0.10
Nov	20.50	6.85	11.30	2.40	4.13	8.55	-0.30
Dec	17.00	5.56	7.80	3.00	2.84	5.05	0.30
Jan 2005	20.00	4.70	10.80	3.20	1.99	8.05	0.50
Feb	19.00	4.21	9.80	3.80	1.51	7.05	1.10
Nov	24.50	11.23	15.20	3.00	8.43	12.40	0.20
Dec	22.80	10.46	13.50	2.85	7.66	10.70	0.05
Jan 2006	28.00	7.61	18.70	3.70	4.81	15.90	0.90
Feb	28.00	5.50	18.70	3.80	2.70	15.90	1.00
Mar		3.80		3.80	1.00		1.00
FL	Temples						
Jan 2004	15.90	5.06	7.65	2.45	2.64	5.25	0.00
Feb	12.00	2.88	3.75	2.60	0.45	1.35	0.15
Mar	14.00	3.06	5.75	2.85	0.62	3.35	0.40
Apr	14.00	2.92	5.75	2.85	0.47	3.35	0.40
Jan 2005	17.00	6.46	7.80	3.15	3.77	5.05	0.60
Feb	15.20	4.86	6.00	4.45	2.26	3.25	1.90
Mar	15.50	4.55	6.30	4.25	1.97	3.55	1.70
Jan 2006	20.30	8.58	11.00	3.85	5.98	8.40	1.25
Feb	17.30	6.12	8.00	4.10	3.52	5.40	1.50
Mar	16.50	4.59	7.20	4.40	1.99	4.60	1.80
Apr		4.40		4.40	1.80		1.80

**Oranges: Marketing Year Average Prices Received,
Crop Years, 2003-04 and 2004-05**

State, Variety, and Utilization	2003-04			2004-05		
	F.O.B. Packed	Equiv. P.H.D.	Equiv. On-Tree	F.O.B. Packed	Equiv. P.H.D.	Equiv. On-Tree
	<i>Dollars per box</i>	<i>Dollars per box</i>	<i>Dollars per box</i>	<i>Dollars per box</i>	<i>Dollars per box</i>	<i>Dollars per box</i>
AZ						
Navel & Misc.		6.50	4.15		7.84	5.44
Fresh	17.10	9.65	7.30	20.50	12.90	10.50
Processing		0.39	-1.96		0.38	-2.02
Valencias		4.23	1.84		3.18	0.74
Fresh	11.80	4.23	1.84	10.90	3.18	0.74
Processing						
All		5.68	3.31		5.78	3.37
Fresh	14.70	7.15	4.78	15.00	7.35	4.93
Processing		0.39	-1.96		0.38	-2.02
CA						
Navel & Misc.		10.60	8.25		9.82	7.42
Fresh	19.60	12.15	9.80	20.30	12.70	10.30
Processing		0.39	-1.96		0.38	-2.02
Valencias		12.48	10.09		8.38	5.94
Fresh	21.00	13.43	11.04	18.70	10.98	8.54
Processing		0.32	-2.07		0.30	-2.14
All		11.01	8.65		9.36	6.95
Fresh	19.90	12.44	10.08	19.80	12.16	9.75
Processing		0.38	-1.97		0.35	-2.06
FL						
Early/Mids.		4.26	2.20		5.03	2.82
Fresh	15.00	6.85	4.65	18.60	10.00	7.60
Processing		4.14	2.09		4.74	2.54
Valencias		5.79	3.64		6.50	4.24
Fresh	13.20	5.05	2.85	16.80	8.20	5.80
Processing		5.82	3.67		6.42	4.17
All		4.99	2.89		5.72	3.49
Fresh	14.20	6.07	3.87	17.90	9.27	6.87
Processing		4.95	2.85		5.54	3.31
TX						
Early/Mids.		4.21	2.87		7.01	5.65
Fresh	14.20	4.91	3.56	19.40	9.11	7.74
Processing		2.55	1.25		2.04	0.71
Valencias		4.82	3.49		5.45	4.09
Fresh	15.70	5.61	4.26	17.50	7.21	5.84
Processing		2.55	1.25		2.04	0.71
All		4.29	2.96		6.77	5.41
Fresh	15.10	5.01	3.66	19.10	8.84	7.47
Processing		2.55	1.25		2.04	0.71
US						
Early/Mids.						
Navels		5.56	3.45		6.55	4.29
Fresh	18.70	11.10	8.80	20.10	12.24	9.87
Processing		4.00	1.94		4.28	2.06
Valencias		6.27	4.11		6.86	4.56
Fresh	18.30	10.49	8.18	18.30	10.35	7.93
Processing		5.79	3.63		6.06	3.80
All		5.88	3.74		6.68	4.41
Fresh	18.60	10.93	8.63	19.50	11.63	9.24
Processing		4.85	2.74		5.10	2.86

**Oranges: Marketing Year Average Prices Received,
Crop Year 2005-06**

State, Variety, and Utilization	2005-06		
	F.O.B. Packed	Equiv. P.H.D.	Equiv. On-Tree
	<i>Dollars per box</i>	<i>Dollars per box</i>	<i>Dollars per box</i>
AZ			
Navel & Misc.		6.74	4.29
Fresh	17.70	9.95	7.50
Processing		1.50	-0.95
Valencias		4.46	1.97
Fresh	16.80	8.93	6.44
Processing		1.41	-1.08
All		5.72	3.26
Fresh	17.40	9.60	7.14
Processing		1.45	-1.02
CA			
Navel & Misc.		9.66	7.21
Fresh	21.00	13.25	10.80
Processing		1.50	-0.95
Valencias		11.29	8.80
Fresh	21.50	13.63	11.14
Processing		1.41	-1.08
All		10.00	7.54
Fresh	21.10	13.34	10.88
Processing		1.49	-0.97
FL			
Early/Mids.		6.85	4.53
Fresh	17.80	8.80	6.20
Processing		6.71	4.41
Valencias		9.12	6.42
Fresh	16.60	7.60	5.00
Processing		9.17	6.47
All		7.97	5.46
Fresh	17.40	8.40	5.80
Processing		7.94	5.44
TX			
Early/Mids.		6.44	5.05
Fresh	17.80	7.30	5.90
Processing		3.29	1.93
Valencias		7.91	6.51
Fresh	19.20	8.70	7.30
Processing		3.40	2.04
All		6.62	5.23
Fresh	18.00	7.49	6.09
Processing		3.30	1.94
US			
Early/Mids.			
Navels		7.78	5.42
Fresh	20.40	12.37	9.93
Processing		5.96	3.64
Valencias		9.37	6.70
Fresh	20.30	12.15	9.66
Processing		8.95	6.26
All		8.44	5.96
Fresh	20.40	12.32	9.87
Processing		7.36	4.87

**Grapefruit: Marketing Year Average Prices Received,
Crop Years, 2003-04 and 2004-05**

State, Variety, and Utilization	2003-04			2004-05		
	F.O.B. Packed	Equiv. P.H.D.	Equiv. On-Tree	F.O.B. Packed	Equiv. P.H.D.	Equiv. On-Tree
	<i>Dollars per box</i>	<i>Dollars per box</i>	<i>Dollars per box</i>	<i>Dollars per box</i>	<i>Dollars per box</i>	<i>Dollars per box</i>
AZ		7.49	4.75		12.92	10.12
Fresh	16.20	7.49	4.75	21.80	12.92	10.12
CA		10.16	7.42		16.19	13.39
Fresh	20.30	11.59	8.85	27.20	18.32	15.52
Processing		-0.27	-3.01		-0.28	-3.08
FL						
Colored Seedless		6.39	4.22		16.66	14.02
Fresh	16.80	9.22	7.27	29.60	21.48	19.11
Processing		3.12	0.70		7.90	4.76
White Seedless ¹		4.12	1.94		14.46	11.93
Fresh	17.00	9.40	7.50	32.20	23.72	21.32
Processing		2.75	0.50		8.34	5.73
All		5.50	3.33		16.08	13.47
Fresh	16.80	9.26	7.32	30.10	21.89	19.51
Processing		2.93	0.60		8.07	5.13
TX		3.98	2.83		11.62	10.46
Fresh	16.00	6.01	4.84	33.40	23.21	22.02
Processing		0.95	-0.17		1.20	0.06
US		5.77	3.66		14.93	12.65
Fresh	17.30	9.21	7.23	29.90	21.06	18.79
Processing		2.71	0.46		5.13	2.83

¹ Includes seedy type grapefruit.

**Grapefruit: Marketing Year Average Prices Received,
Crop Year 2005-06**

State, Variety, and Utilization	2005-06		
	F.O.B. Packed	Equiv. P.H.D.	Equiv. On-Tree
	<i>Dollars per box</i>	<i>Dollars per box</i>	<i>Dollars per box</i>
AZ		13.54	10.68
Fresh	22.60	13.54	10.68
Processing			
CA		12.99	10.13
Fresh	23.80	14.74	11.88
Processing		-0.29	-3.15
FL			
Colored Seedless		11.58	8.92
Fresh	24.10	15.69	13.40
Processing		8.50	5.56
White Seedless ¹		11.91	9.22
Fresh	27.40	18.30	16.09
Processing		10.10	7.28
All		11.69	9.02
Fresh	24.80	16.23	13.96
Processing		9.15	6.26
TX		12.17	10.98
Fresh	28.10	17.71	16.50
Processing		3.31	2.15
US		11.98	9.53
Fresh	25.20	16.09	13.87
Processing		8.06	5.39

¹ Includes seedy type grapefruit.

**Lemons, Tangelos, Tangerines, and Temples: Marketing Year
Average Prices Received, Crop Years, 2003-04 and 2004-05**

State, Variety, and Utilization	2003-04			2004-05		
	F.O.B. Packed	Equiv. P.H.D.	Equiv. On-Tree	F.O.B. Packed	Equiv. P.H.D.	Equiv. On-Tree
	<i>Dollars per box</i>	<i>Dollars per box</i>	<i>Dollars per box</i>	<i>Dollars per box</i>	<i>Dollars per box</i>	<i>Dollars per box</i>
Lemons						
AZ		10.11	5.00		11.85	6.64
Fresh	24.50	15.01	9.90	31.00	21.32	16.11
Processing		0.20	-4.91		0.18	-5.03
CA		13.63	8.52		13.56	8.35
Fresh	29.50	20.01	14.90	33.10	23.42	18.21
Processing		0.20	-4.91		0.18	-5.03
US		13.13	8.01		13.38	8.17
Fresh	28.80	19.30	14.19	32.90	23.21	18.00
Processing		0.20	-4.91		0.18	-5.03
Tangelos						
FL		10.02	7.48		5.16	2.45
Fresh	24.50	16.25	13.85	18.40	9.20	6.45
Processing		2.56	-0.14		3.27	0.57
Tangerines						
AZ		10.52	7.46		13.49	10.37
Fresh	24.40	15.69	12.63	25.70	16.82	13.70
Processing		-0.24	-3.30		-0.26	-3.38
CA		15.10	12.04		18.42	15.30
Fresh	25.80	17.09	14.03	30.40	21.52	18.40
Processing		0.32	-2.74		0.30	-2.82
FL		11.04	7.46		15.38	12.02
Fresh	24.50	14.75	11.50	29.40	19.10	15.90
Processing		3.04	-1.26		4.46	0.66
US		11.81	8.36		16.28	13.01
Fresh	24.80	15.37	12.18	29.60	19.85	16.68
Processing		2.57	-1.53		3.36	-0.26
Temples						
FL		3.51	1.07		5.10	2.48
Fresh	14.30	6.05	3.65	16.00	6.80	4.05
Processing		2.69	0.24		4.27	1.72

**Lemons, Tangelos, Tangerines, and Temples: Marketing Year
Average Prices Received, Crop Year, 2005-06**

State, Variety, and Utilization	2005-06		
	F.O.B. Packed	Equiv. P.H.D.	Equiv. On-Tree
	<i>Dollars per box</i>	<i>Dollars per box</i>	<i>Dollars per box</i>
Lemons			
AZ		9.37	4.06
Fresh	26.60	16.73	11.42
Processing		-0.40	-5.71
CA		16.97	11.66
Fresh	33.50	23.63	18.32
Processing		-0.37	-5.68
US		15.81	10.49
Fresh	32.60	22.77	17.46
Processing		-0.38	-5.69
Tangelos			
FL		8.17	5.37
Fresh	24.60	15.30	12.50
Processing		3.59	0.79
Tangerines			
AZ		12.00	8.82
Fresh	27.40	18.34	15.16
Processing		0.28	-2.90
CA		16.43	13.25
Fresh	30.90	21.84	18.66
Processing		0.28	-2.90
FL		13.08	9.44
Fresh	27.50	17.00	13.60
Processing		5.60	1.50
US		14.11	10.64
Fresh	28.70	18.77	15.46
Processing		3.93	0.12
Temples			
FL		5.76	3.16
Fresh	18.50	9.20	6.60
Processing		4.30	1.70

**Florida Grapefruit: Marketing Year Average Prices Received by Region,
Crop Years, 2003-04 and 2004-05**

Variety, Area, and Utilization	2003-04			2004-05		
	F.O.B. Packed	Equiv. P.H.D.	Equiv. On-Tree	F.O.B. Packed	Equiv. P.H.D.	Equiv. On-Tree
	<i>Dollars per box</i>	<i>Dollars per box</i>	<i>Dollars per box</i>	<i>Dollars per box</i>	<i>Dollars per box</i>	<i>Dollars per box</i>
White Seedless						
Interior		2.94	1.18		13.00	10.69
Fresh	16.40	8.90	7.00	31.40	23.50	21.20
Processing		2.75	1.00		8.34	6.03
Indian River		4.58	2.24		17.08	14.15
Fresh	17.00	9.40	7.50	32.90	23.85	21.35
Processing		2.75	0.24		8.35	4.85
Colored Seedless						
Interior		4.65	2.67		15.91	13.29
Fresh	15.70	8.20	6.25	28.60	20.70	18.35
Processing		3.12	1.13		7.84	4.75
Indian River		7.35	5.08		17.81	15.14
Fresh	17.10	9.50	7.55	31.00	22.55	20.15
Processing		3.13	0.23		8.01	4.77

**Florida Grapefruit: Marketing Year Average Prices Received by Region,
Crop Year 2005-06**

Variety, Area, and Utilization	2005-06		
	F.O.B. Packed	Equiv. P.H.D.	Equiv. On-Tree
	<i>Dollars per box</i>	<i>Dollars per box</i>	<i>Dollars per box</i>
White Seedless			
Interior			10.34
Fresh	24.70		16.60
Processing			10.00
Indian River			12.84
Fresh	27.70		18.50
Processing			10.10
Colored Seedless			
Interior			10.29
Fresh	23.60		15.50
Processing			8.43
Indian River			12.33
Fresh	24.20		15.70
Processing			8.57

This page intentionally left blank.

Marketing Seasons and Net Weight per Box

Oranges:

Arizona Early, Mids, and Navels	November 1 to March 31	75 pounds
Arizona Valencias	February 1 to June 30	75 pounds
California Navels	November 1 to June 15	75 pounds
California Valencias	March 15 to December 20	75 pounds
Florida Early and Midseason	October 1 to April 1	90 pounds
Florida Valencias	January 1 to July 31	90 pounds
Texas Early, Mids, and Navels	September 25 to February 15	85 pounds
Texas Valencias	January 15 to May 15	85 pounds

Grapefruit:

Arizona	November 1 to June 30	67 pounds
California	November 1 to October 31	67 pounds
Florida	September 10 to July 1	85 pounds
Texas	October 1 to May 30	80 pounds

Lemons:

Arizona	September 1 to March 31	76 pounds
California	August 1 to July 31	76 pounds

Tangelos:

Florida	October 15 to March 1	90 pounds
---------	-----------------------	-----------

Tangerines:

Arizona	November 1 to April 30	75 pounds
California	November 1 to May 15	75 pounds
Florida	October 1 to May 1	95 pounds

Temples:

Florida	January 1 to March 1	90 pounds
---------	----------------------	-----------

Marketing Year Average Prices and Value of Production

State level marketing year average (MYA), or price per box, for fresh and processed sales are the weighted average of monthly sales that occur during a crop's marketing season, adjusted to the packinghouse-door level. The "all" sales MYA price is derived by dividing the "all" sales value by the "all" sales boxes. MYA prices at the U.S. level for commodities with different State box weights are computed as follows:

$$\text{Fresh Market MYAP} = \frac{\sum(\text{State Fresh Value} * \text{State Box Weight})}{\sum(\text{State Fresh Boxes} * \text{State Box Weight})}$$

$$\text{Process Market MYAP} = \frac{\sum(\text{State Process Value} * \text{State Box Weight})}{\sum(\text{State Process Boxes} * \text{State Box Weight})}$$

$$\text{"All" Sales MYAP} = \frac{\sum(\text{State All Value} * \text{State Box Weight})}{\sum(\text{State All Boxes} * \text{State Box Weight})}$$

For commodities with the same box weights across all States, the U.S. MYAs are derived by dividing the sum of States' values by the sum of States' boxes.

U.S. value of production for a given commodity is the sum of the State's values for that commodity. The State level value of production for each commodity is computed as follows:

$$\text{Fresh Market Value} = \text{Fresh Market MYAP} * \text{Fresh Market Boxes}$$

$$\text{Process Market Value} = \text{Process Market MYAP} * \text{Process Market Boxes}$$

$$\text{"All" Sales Value} = \text{Fresh Market Value} + \text{Process Market Value}$$

Citrus prices are based on weighted average F.O.B. packed prices received for fresh fruit and weighted average prices received at the processing plant door for processing fruit. Equivalent returns for fresh and processed fruit are calculated at the packinghouse-door level by deducting sorting, grading, packing, cooling, marketing, and other costs from the two base prices. In some cases, this results in negative returns.

Information Contacts

Listed below are the commodity specialists in the Crops Branch of the National Agricultural Statistics Service to contact for additional information.

Jeff Geuder, Chief (202) 720-2127

Field Crops Section

Greg Thessen, Head (202) 720-2127
Shiela Corley - Cotton, Cotton Ginnings (202) 720-5944
Scott Cox - Wheat, Rye (202) 720-8068
Ty Kalas - Corn, Proso Millet, Flaxseed (202) 720-9526
Dennis Koong - Peanuts, Rice (202) 720-7688
Travis Thorson - Soybeans, Sunflower, Other Oilseeds (202) 720-7369
Travis Thorson - Hay, Oats, Sorghum (202) 690-3234
Brian Young - Crop Weather, Barley, Sugar Crops (202) 720-7621

Fruit, Vegetable & Special Crops Section

Jim Smith, Head (202) 720-2127
Leslie Colburn - Berries, Grapes, Maple Syrup, Tobacco (202) 720-7235
Debbie Flippin - Fresh and Processing Vegetables, Onions,
 Strawberries (202) 720-2157
Rich Holcomb - Citrus, Tropical Fruits (202) 720-5412
Doug Marousek - Floriculture, Nursery, Nuts (202) 720-4215
Dan Norris - Austrian Winter Peas, Dry Edible Peas, Lentils,
 Mint, Mushrooms, Peaches, Pears,
 Wrinkled Seed Peas (202) 720-3250
Jim Smith - Apples, Apricots, Cherries, Cranberries,
 Plums, Prunes (202) 720-2127
Kim Ritchie - Hops (360) 902-1940
Cathy Scherrer - Dry Beans, Potatoes, Sweet Potatoes (202) 720-4285

Index

	Page
Citrus Narrative	3
Frozen Concentrated Orange Juice Yield, Florida	11
Grapefruit	4, 12
Grapefruit Processed, Florida	11
Information Contacts	48
Lemons	4, 14
Marketing Year Average Prices Received, by Crop, by State	38
Marketing Seasons and Net Weight per Box	46
Monthly Average Prices and Equivalent Returns, by Crop, by State	17
Oranges	4, 6
Oranges Processed, Florida	11
Price Definitions	47
Price Narrative	16
Tangelos	4, 14
Tangerines	4, 14
Tangerines Processed, Florida	11
Temples	4, 14
Total Citrus Fruits, by State	5

ACCESS TO REPORTS!!

For your convenience, there are several ways to obtain NASS reports, data products, and services:

INTERNET ACCESS

All NASS reports are available free of charge on the worldwide Internet. For access, connect to the Internet and go to the NASS Home Page at: **www.nass.usda.gov**.

E-MAIL SUBSCRIPTION

All NASS reports are available by subscription free of charge direct to your e-mail address. Starting with the NASS Home Page at **www.nass.usda.gov**, under the right navigation, *Receive reports by Email*, click on **National** or **State**. Follow the instructions on the screen.

PRINTED REPORTS OR DATA PRODUCTS

CALL OUR TOLL-FREE ORDER DESK: 800-999-6779 (U.S. and Canada)
Other areas, please call 703-605-6220 FAX: 703-605-6900
(Visa, MasterCard, check, or money order acceptable for payment.)

ASSISTANCE

For **assistance** with general agricultural statistics or further information about NASS or its products or services, contact the **Agricultural Statistics Hotline** at **800-727-9540**, 7:30 a.m. to 4:00 p.m. ET, or e-mail: **nass@nass.usda.gov**.

The U.S. Department of Agriculture (USDA) prohibits discrimination in all its programs and activities on the basis of race, color, national origin, age, disability, and where applicable, sex, marital status, familial status, parental status, religion, sexual orientation, genetic information, political beliefs, reprisal, or because all or part of an individual's income is derived from any public assistance program. (Not all prohibited bases apply to all programs.) Persons with disabilities who require alternative means for communication of program information (Braille, large print, audiotape, etc.) should contact USDA's TARGET Center at (202) 720-2600 (voice and TDD).

To file a complaint of discrimination, write to USDA, Director, Office of Civil Rights, 1400 Independence Avenue, S.W., Washington, D.C. 20250-9410, or call (800) 795-3272 (voice) or (202) 720-6382 (TDD). USDA is an equal opportunity provider and employer.

USDA Data Users' Meeting

October 16, 2006

Doubletree Chicago O'Hare Airport - Rosemont

Chicago, Illinois

(847) 292-9100

The USDA's National Agricultural Statistics Service will be organizing an open forum for data users. The purpose will be to provide updates on pending changes in the various statistical and information programs and seek comments and input from data users. Other USDA agencies to be represented will include the Agricultural Marketing Service, the Economic Research Service, the Foreign Agricultural Service, and World Agricultural Outlook Board. The Foreign Trade Division from the Census Bureau will also be included in the meeting.

For registration details or additional information for the Data Users' Meeting, see the NASS homepage at www.nass.usda.gov/forum/ or contact Amy Jenkins (NASS) at (202) 690-8141 or at amy_jenkins@nass.usda.gov.

This Data Users' Meeting precedes an Industry Outlook meeting that will be held at the same location on October 17, 2006. The Outlook meeting brings together analysts from various commodity sectors to discuss the outlook situation. For more information about the outlook meeting and to register contact Jim Robb (Livestock and Marketing Information Center) at (720) 544-2941 or at robb@lmic.info.