

CITRUS FRUITS

By States, 1964-65 and 1965-66

- Production
- Use
- Value

**UNITED STATES DEPARTMENT OF AGRICULTURE
STATISTICAL REPORTING SERVICE**

Fr Nt 3-1 (10-66)

**CROP REPORTING BOARD
WASHINGTON, D. C.**

OCTOBER 1966

CONTENTS

	<u>Page</u>
Total Citrus Fruits	4
Oranges	4,5,6
Grapefruit	4,7,8
Lemons	4,9
Limes	4,9
Tangelos	4,9
Tangerines	4,9

Growers' Marketing Seasons

Oranges: Florida--Early and mid-season, September 15 to April 1;
 Valencia, February 1 to July 5;
California--Navel, November 5 to June 20; Valencia, March 15
 to December 15;
Texas--September 25 to May 15;
Arizona--November 1 to June 30;
Louisiana--October 20 to March 1.

Grapefruit: California--Desert Valleys, November 15 to July 15;
 other areas, March 20 to October 31;
Florida--September 5 to June 10;
Arizona--November 1 to July 31;
Texas--September 25 to May 30.

Lemons: California--November 1 to October 31.
Arizona--September 15 to March 1.

Limes: Florida--April 1 to March 31.

Tangelos: Florida--October 20 to March 30.

Tangerines: Florida--October 20 to February 15.
California--November 10 to June 15.
Arizona--November 15 to June 30.

Net Weight Per Box

Oranges: Florida, Texas, and Louisiana	90 pounds
California and Arizona	75 pounds
Grapefruit: Florida	85 pounds
Texas	80 pounds
California Desert Valleys and Arizona	64 pounds
Other California Areas	67 pounds
Lemons: California and Arizona	76 pounds
Limes: Florida	80 pounds
Tangelos: Florida	90 pounds
Tangerines: Florida	95 pounds
California and Arizona	75 pounds

CITRUS FRUITS

By States, 1964-65 and 1965-66 Production, Use and Value

This report presents statistics on production, farm disposition, price, value, and utilization of sales for the 1964-65 and 1965-66 crops of citrus fruits. The revised production and utilization estimates are based on data available at the end of the marketing season such as marketing agreement records, recorded rail and truck movement, quantities inspected, and quantities used by processors. Allowances are made for unrecorded local sales and quantities used in farm households. Estimates for California's 1965-66 crops of Valencia oranges, grapefruit, and lemons are preliminary as records are not yet complete for the marketing season.

Citrus production for the 1965-66 season totaled 8.8 million tons, 15 percent above the 7.7 million tons produced during the 1964-65 season. Orange production was up 16 percent, grapefruit up 13 percent, and lemons up 14 percent. Florida's 1965-66 orange crop of 4.5 million tons (100.4 million boxes) was the second largest of record, the largest being the 1961-62 crop of 5.1 million tons (113.4 million boxes).

Value of production for the 1965-66 citrus crop is 496 million dollars, 6 percent below that for the 1964-65 crop. The value estimates in this report cover the marketing season and should not be confused with cash receipts from these crops for a calendar year.

Of the 139.8 million boxes of oranges produced during the 1965-66 season, approximately 72 percent were grown in Florida, 25 percent in California, and the remaining 3 percent in Texas and Arizona. Florida produced 75 percent of the 1965-66 U. S. grapefruit crop.

Processors used 62 percent of the citrus fruit produced in the U. S. last season compared with 58 of the 1964-65 crop. About 69 percent of the oranges, 51 percent of the grapefruit and 40 percent of the lemons were processed compared with 65 percent of the oranges, 47 percent of the grapefruit and 37 percent of the lemons during the 1964-65 season. Approximately 62 percent of Florida's 1965-66 crop oranges were used for frozen concentrate compared with 63 percent of the 1964-65 crop.

Table 1.--Citrus fruits: Production, farm disposition, utilization of sales, and value, United States, crops of 1964-65 and 1965-66

Crop and season	Production ^{1/}		Farm disposition		Utilization of sales		Value of --	
	Total	Having value	Home use	Sold	Fresh sales	Total processed	Production	Sales
	1,000 tons	1,000 tons	1,000 tons	1,000 tons	1,000 tons	1,000 tons	1,000 dollars	1,000 dollars
Total citrus fruits ^{2/}:								
1964-65	7,659	7,633	57	7,576	3,148	4,428	528,758	524,724
1965-66	8,776	8,761	62	8,699	3,281	5,418	496,092	492,655
Total oranges:								
1964-65	5,180	5,161	42	5,119	1,742	3,377	379,726	376,666
1965-66	6,005	5,990	45	5,945	1,806	4,139	331,023	328,577
Early & midseason, temple, and navel:								
1964-65	2,709	2,698	---	---	---	---	---	---
1965-66	3,093	3,078	---	---	---	---	---	---
Valencia:								
1964-65	2,471	2,463	---	---	---	---	---	---
1965-66	2,912	2,912	---	---	---	---	---	---
Grapefruit:								
1964-65	1,667	1,667	11	1,656	880	776	78,147	77,618
1965-66	1,891	1,891	12	1,879	908	971	90,621	90,048
Lemons:								
1964-65	540	540	1	539	340	199	47,057	47,001
1965-66	618	618	3/	618	370	248	53,732	53,677
Limes:								
1964-65	22	22	3/	22	12	10	2,038	2,020
1965-66	17	17	3/	17	11	6	2,025	2,001
Tangelos:								
1964-65	45	45	3/	45	36	9	4,610	4,564
1965-66	54	54	1	53	43	10	4,104	4,053
Tangerines:								
1964-65	205	198	3	195	138	57	17,180	16,855
1965-66	191	191	4	187	143	44	14,587	14,299

^{1/} Differences between production and production having value consist of fruit unharvested for economic reasons, donated to charity, or eliminated from production.

^{2/} Oranges, grapefruit, lemons, limes, tangelos, and tangerines.

^{3/} Negligible.

Table 2.--Oranges: Production, farm disposition, utilization of sales, season average price per box received by growers, and value, by States, crops of 1964-65 and 1965-66

State, variety, and season	Production ^{1/}		Farm disposition		Utilization of sales		Price ^{2/}	Value of --	
	Total	Having value	Home use	Sold	Fresh sales	Total processed		Production	Sales
	1,000 boxes _{3/}	1,000 boxes _{3/}	1,000 boxes _{3/}	1,000 boxes _{3/}	1,000 boxes _{3/}	1,000 boxes _{3/}	Dollars	1,000 dollars	1,000 dollars
FLORIDA									
<u>Total:</u>									
1964-65	86,200	86,200	740	85,460	16,104	69,356	3.01	259,460	257,232
1965-66	100,400	100,400	800	99,600	17,072	82,528	2.20	220,792	219,054
<u>Temple:</u>									
1964-65	3,800	3,800	40	3,760	2,206	1,554	3.34	12,692	12,558
1965-66	4,500	4,500	50	4,450	2,440	2,010	2.25	10,125	10,012
<u>Other early and midseason:</u>									
1964-65	42,600	42,600	350	42,250	7,438	34,812	3.13	133,338	132,242
1965-66	47,000	47,000	400	46,600	8,779	37,821	1.85	86,950	86,210
<u>Valencia:</u>									
1964-65	39,800	39,800	350	39,450	6,460	32,990	2.85	113,430	112,432
1965-66	48,900	48,900	350	48,550	5,853	42,697	2.53	123,717	122,832
CALIFORNIA									
<u>Total:</u>									
1964-65	31,200	30,700	200	30,500	24,470	6,030	3.58	109,907	109,189
1965-66	35,700	35,300	200	35,100	24,690	10,410	2.87	101,193	100,620
<u>Navel and miscellaneous:</u>									
1964-65	15,200	14,900	100	14,800	13,510	1,290	3.93	58,557	58,164
1965-66	18,700	18,300	100	18,200	14,090	4,110	2.91	53,253	52,962
<u>Valencia:</u>									
1964-65	16,000	15,800	100	15,700	10,960	4,740	3.25	51,350	51,025
1965-66	17,000	17,000	100	16,900	10,600	6,300	2.82	47,940	47,658
TEXAS									
<u>Total ^{4/}:</u>									
1964-65	880	880	12	868	793	75	3.48	3,062	3,021
1965-66	1,300	1,300	35	1,265	1,113	152	2.42	3,146	3,061
<u>Early and midseason ^{4/ 5/}:</u>									
1964-65	570	570	---	---	---	---	---	---	---
1965-66	880	880	---	---	---	---	---	---	---
<u>Valencia ^{5/}:</u>									
1964-65	310	310	---	---	---	---	---	---	---
1965-66	420	420	---	---	---	---	---	---	---

See footnotes at end of table.

Table 2.--Oranges: Production, farm disposition, utilization of sales, season average price per box received by growers, and value, by States, crops of 1964-65 and 1965-66 -- Continued

State, variety, and season	Production ^{1/}		Farm disposition		Utilization of sales		Price ^{2/}	Value of --	
	Total	Having value	Home use	Sold	Fresh sales	Total processed		Production	Sales
	1,000 boxes _{3/}	1,000 boxes _{3/}	1,000 boxes _{3/}	1,000 boxes _{3/}	1,000 boxes _{3/}	1,000 boxes _{3/}	Dollars	1,000 dollars	1,000 dollars
ARIZONA									
Total:									
1964-65	2,420	2,420	20	2,400	1,701	699	2.98	7,223	7,157
1965-66	2,420	2,420	20	2,400	1,653	747	2.43	5,892	5,842
Navel and miscellaneous:									
1964-65	670	670	10	660	553	107	3.99	2,673	2,633
1965-66	960	960	10	950	762	188	2.70	2,592	2,565
Valencia:									
1964-65	1,750	1,750	10	1,740	1,148	592	2.60	4,550	4,524
1965-66	1,460	1,460	10	1,450	891	559	2.26	3,300	3,277
LOUISIANA									
Total ^{4/}:									
1964-65	10	10	1	9	9	---	7.40	74	67
1965-66	6/	---	---	---	---	---	---	---	---
UNITED STATES									
Total ^{5/}:									
1964-65	120,710	120,210	973	119,237	43,077	76,160	3.16	379,726	376,666
1965-66	139,820	139,420	1,055	138,365	44,528	93,837	2.37	331,023	328,577
Early & midseason, temple, and navel:									
1964-65	62,850	62,550	---	---	---	---	---	---	---
1965-66	72,040	71,640	---	---	---	---	---	---	---
Valencia:									
1964-65	57,860	57,660	---	---	---	---	---	---	---
1965-66	67,780	67,780	---	---	---	---	---	---	---

^{1/} Differences between production and production having value consist of fruit unharvested for economic reasons, donated to charity, or eliminated from production.

^{2/} Equivalent packinghouse door returns.

^{3/} For net weight per box see table on page 2.

^{4/} Includes small quantities of tangerines.

^{5/} Farm disposition, price, and value, by varieties, not available.

^{6/} 1965-66 Louisiana orange production too small to warrant quantitative estimate.

Table 3.--Oranges processed, Florida, crops of 1964-65 and 1965-66

Season	Concentrates		Chilled products		Other processed	Total processed
	Frozen	Other	Juice	Salads		
	1,000 boxes <u>1/</u>	1,000 boxes <u>1/</u>	1,000 boxes <u>1/</u>	1,000 boxes <u>1/</u>	1,000 boxes <u>1/</u>	1,000 boxes <u>1/</u>
1964-65	54,487	24	7,300	533	7,281	<u>2/</u> 69,625
1965-66	61,824	110	12,324	784	7,899	<u>3/</u> 82,941

1/ For net weight per box see table on page 2.

2/ Includes 194,000 boxes of tangelos, 71,000 boxes of murcotts and 4,000 boxes of oranges imported from Haiti.

3/ Includes 221,000 boxes of tangelos and 192,000 boxes of murcotts.

Table 4.--Grapefruit: Production, farm disposition, utilization of sales, season average price per box received by growers, and value, by States, crops of 1964-65 and 1965-66

State, variety, and season	Production <u>1/</u>		Farm disposition		Utilization of sales		Price <u>2/</u>	Value of --	
	Total	Having value	Home use	Sold	Fresh sales	Total processed		Production	Sales
	1,000 boxes <u>3/</u>	1,000 boxes <u>3/</u>	1,000 boxes <u>3/</u>	1,000 boxes <u>3/</u>	1,000 boxes <u>3/</u>	1,000 boxes <u>3/</u>	Dollars	1,000 dollars	1,000 dollars
FLORIDA									
Total:									
1964-65	31,900	31,900	180	31,720	15,666	16,054	1.91	60,809	60,463
1965-66	34,900	34,900	180	34,720	14,897	19,823	1.95	67,886	67,533
Seedless:									
1964-65	21,700	21,700	130	21,570	13,996	7,574	2.06	44,795	44,527
1965-66	23,700	23,700	130	23,570	13,737	9,833	2.06	48,846	48,578
Pink Seedless									
1964-65	8,700	8,700	50	8,650	6,529	2,121	2.25	19,575	19,462
1965-66	9,300	9,300	50	9,250	6,854	2,396	2.14	19,902	19,795
White Seedless									
1964-65	13,000	13,000	80	12,920	7,467	5,453	1.94	25,220	25,065
1965-66	14,400	14,400	80	14,320	6,883	7,437	2.01	28,944	28,783
Other:									
1964-65	10,200	10,200	50	10,150	1,670	8,480	1.57	16,014	15,936
1965-66	11,200	11,200	50	11,150	1,160	9,990	1.70	19,040	18,955
TEXAS									
Total:									
1964-65	2,000	2,000	45	1,955	1,816	139	2.35	4,700	4,594
1965-66	3,800	3,800	70	3,730	3,010	720	1.88	7,144	7,012

See footnotes at end of table.

Table 4.--Grapefruit: Production, farm disposition, utilization of sales, season average price per box received by growers, and value, by States, crops of 1964-65 and 1965-66 -- Continued

State, variety, and season	Production ^{1/}		Farm disposition		Utilization of sales		Price ^{2/}	Value of --	
	Total	Having value	Home use	Sold	Fresh sales	Total processed		Production	Sales
	1,000	1,000	1,000	1,000	1,000	1,000		1,000	1,000
	<u>boxes</u>	<u>boxes</u>	<u>boxes</u>	<u>boxes</u>	<u>boxes</u>	<u>boxes</u>	<u>Dollars</u>	<u>dollars</u>	<u>dollars</u>
	<u>3/</u>	<u>3/</u>	<u>3/</u>	<u>3/</u>	<u>3/</u>	<u>3/</u>			
CALIFORNIA									
Total:									
1964-65	4,230	4,227	22	4,205	2,579	1,626	2.12	8,984	8,932
1965-66	4,850	4,845	22	4,823	2,867	1,956	2.24	10,863	10,807
Desert Valleys:									
1964-65	2,530	2,527	6	2,521	1,375	1,146	1.88	4,751	4,739
1965-66	2,750	2,745	6	2,739	1,483	1,256	1.80	4,941	4,930
Others:									
1964-65	1,700	1,700	16	1,684	1,204	480	2.49	4,233	4,193
1965-66	2,100	2,100	16	2,084	1,384	700	2.82	5,922	5,877
ARIZONA									
Total:									
1964-65	2,900	2,900	20	2,880	1,788	1,092	1.26	3,654	3,629
1965-66	3,050	3,050	20	3,030	1,903	1,127	1.55	4,728	4,696
UNITED STATES									
Total:									
1964-65	41,030	41,027	267	40,760	21,849	18,911	1.90	78,147	77,618
1965-66	46,600	46,595	292	46,303	22,677	23,626	1.94	90,621	90,048

^{1/} Differences between production and production having value consist of fruit unharvested for economic reasons, donated to charity, or eliminated from production.

^{2/} Equivalent packinghouse door returns.

^{3/} For net weight per box see table on page 2.

Table 5.--Grapefruit and tangerines processed, Florida, crops of 1964-65 and 1965-66

Season	Grapefruit						Tangerines		
	Concentrates		Chilled products		Other processed	Total processed	Frozen concentrates	Other processed	Total processed
	Frozen	Other	Juice	Salads					
	1,000	1,000	1,000	1,000	1,000	1,000	1,000	1,000	1,000
<u>boxes</u>	<u>boxes</u>	<u>boxes</u>	<u>boxes</u>	<u>boxes</u>	<u>boxes</u>	<u>boxes</u>	<u>boxes</u>	<u>boxes</u>	
	<u>1/</u>	<u>1/</u>	<u>1/</u>	<u>1/</u>	<u>1/</u>	<u>1/</u>	<u>1/</u>	<u>1/</u>	<u>1/</u>
1964-65	3,516	35	262	1,180	11,061	16,054	919	250	1,169
1965-66	3,992	---	726	1,636	13,469	19,823	624	244	868

^{1/} For net weight per box see table on page 2.

Table 6.--Lemons, Limes, Tangelos, and Tangerines: Production, farm disposition, utilization of sales, season average price per box received by growers, and value, by States, crops of 1964-65 and 1965-66

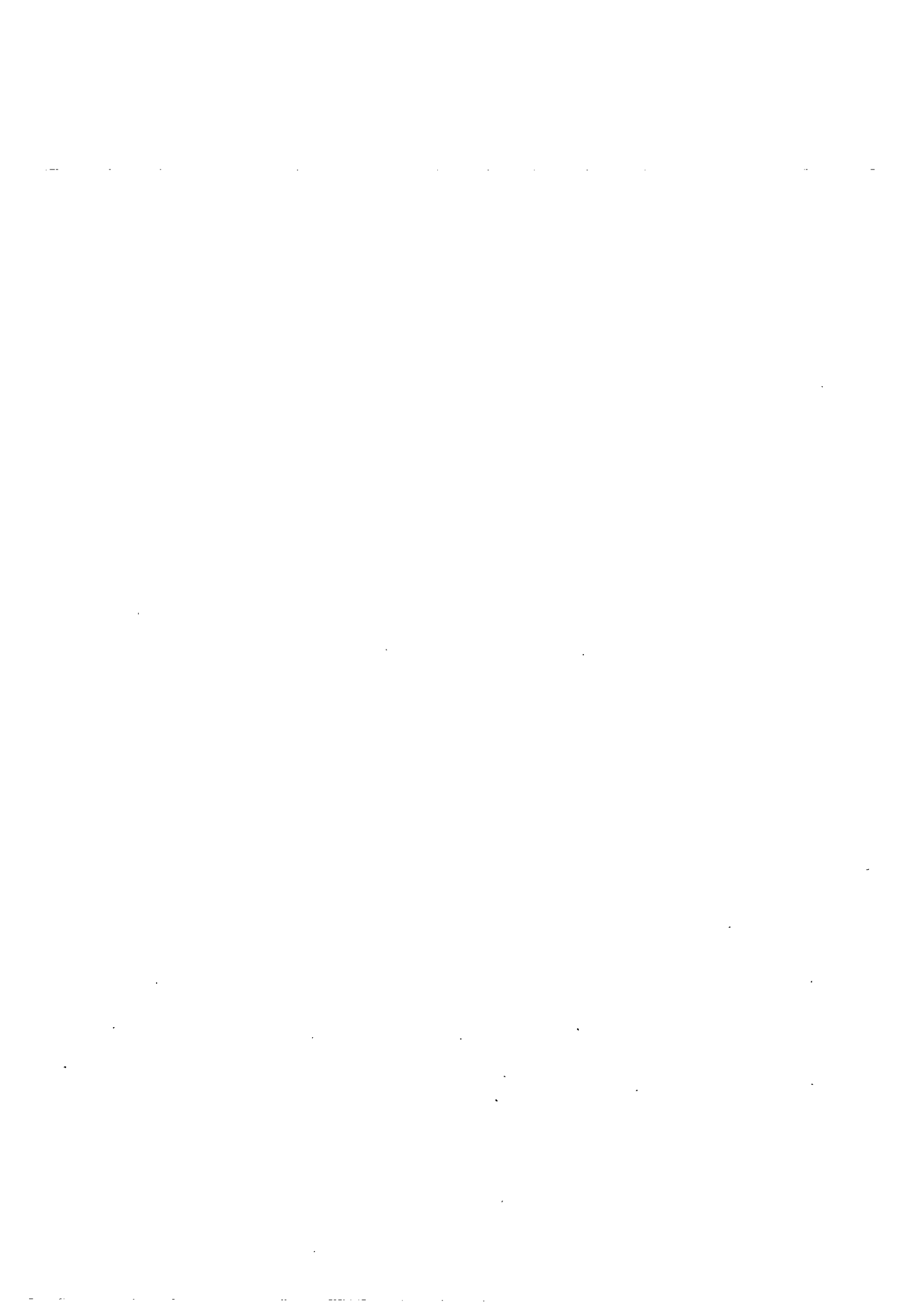
State, crop, and season	Production 1/		Farm disposition		Utilization of sales		Price 2/	Value of --	
	Total	Having value	Home use	Sold	Fresh sales	Total processed		Production	Sales
	1,000 boxes 3/	1,000 boxes 3/	1,000 boxes 3/	1,000 boxes 3/	1,000 boxes 3/	1,000 boxes 3/	Dollars	1,000 dollars	1,000 dollars
LEMONS									
California:									
1964-65	13,100	13,100	15	13,085	8,370	4,715	3.31	43,361	43,311
1965-66	14,300	14,300	15	14,285	9,095	5,190	3.42	48,906	48,855
Arizona:									
1964-65	1,110	1,110	2	1,108	584	524	3.33	3,696	3,690
1965-66	1,970	1,970	2	1,968	643	1,325	2.45	4,826	4,822
United States:									
1964-65	14,210	14,210	17	14,193	8,954	5,239	3.31	47,057	47,001
1965-66	16,270	16,270	17	16,253	9,738	6,515	3.30	53,732	53,677
LIMES									
Florida 4/:									
1964-65	560	560	5	555	295	260	3.64	2,038	2,020
1965-66	415	415	5	410	270	140	4.88	2,025	2,001
TANGELOS									
Florida 4/:									
1964-65	1,000	1,000	10	990	796	194	4.61	4,610	4,564
1965-66	1,200	1,200	15	1,185	964	221	3.42	4,104	4,053
TANGERINES									
Florida:									
1964-65	3,900	3,750	70	3,680	2,511	1,169	3.78	14,175	13,910
1965-66	3,600	3,600	70	3,530	2,662	868	3.25	11,700	11,472
California:									
1964-65	400	400	10	390	357	33	5.45	2,180	2,126
1965-66	350	350	10	340	292	48	5.55	1,942	1,887
Arizona:									
1964-65	140	140	1	139	133	6	5.89	825	819
1965-66	180	180	1	179	158	21	5.25	945	940
United States:									
1964-65	4,440	4,290	81	4,209	3,001	1,208	4.00	17,180	16,855
1965-66	4,130	4,130	81	4,049	3,112	937	3.53	14,587	14,299

1/ Differences between production and production having value consist of fruit unharvested for economic reasons, donated to charity, or eliminated from production.

2/ Equivalent packinghouse door returns.

3/ For net weight per box see table on page 2.

4/ Florida production and United States production synonymous.



UNITED STATES DEPARTMENT OF AGRICULTURE
STATISTICAL REPORTING SERVICE
WASHINGTON, D. C. 20250

POSTAGE AND FEES PAID
U. S. DEPARTMENT OF AGRICULTURE

OFFICIAL BUSINESS