



United States
Department of
Agriculture

National
Agricultural
Statistics
Service



Citrus Fruits 2004 Summary

September 2004

Fr Nt 3-1 (04) a

USDA

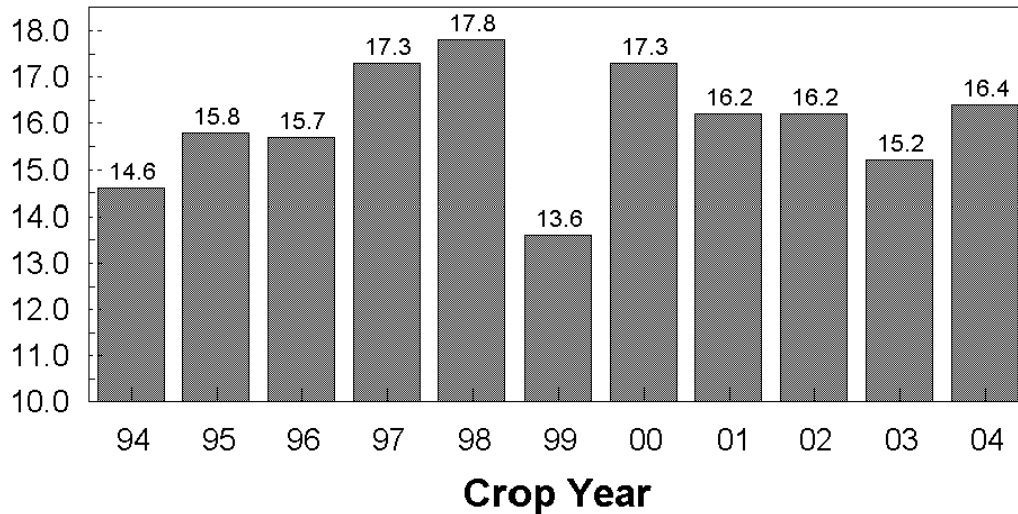


Table of Contents

	Page
U.S. Citrus: Utilized Production and Value of Production: 1994-2004	2
Comments	3
Citrus Fruits: United States	4
Oranges	6
Frozen Concentrated Orange Juice Yield, Florida	11
Oranges Processed, by Product Type, Florida	11
Grapefruit Processed, by Product Type, Florida	11
Tangerines Processed, by Product Type, Florida	11
Grapefruit	12
K-Early Citrus	14
Lemons	14
Limes	14
Tangelos	14
Tangerines	14
Temples	14
Citrus Prices Narrative	16
Monthly Average Prices and Equivalent Returns, by Crop, By State	17
Marketing Year Average Prices Received, by Crop, By State	38
Marketing Seasons and Net Weight per Box	46
Price Definitions	47
Information Contacts	48
Index	49

U.S. Citrus Utilized Production

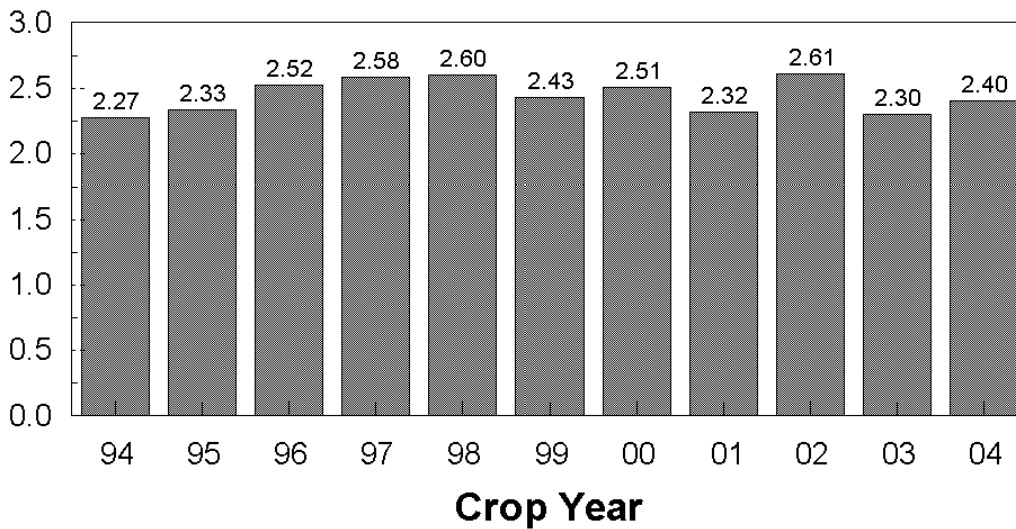
Million Tons



2004 on chart covers first bloom in 2003 through harvest in 2004, etc.

U.S. Citrus Value of Production Packinghouse-door equivalents

Billion Dollars



2004 on chart covers first bloom in 2003 through harvest in 2004, etc.

Update Alert

The following were corrected in the September 2004 Citrus Fruits Summary:

U.S. value of production for Valencia and all oranges for the 2002-03 season on page 4. CA and U.S. value of production for total citrus fruits for the 2002-03 season on page 5. CA Valencia and all oranges value of production for the 2002-03 season on page 7. U.S. Valencia and total oranges value of production on page 9. The prices data for the month of Sept 2003 was added to U.S. grapefruit on page 26. The prices data for the months of Sept and Oct 2002 were added to CA grapefruit on page 28. The prices data for the month of Dec 2004 was added to Florida tangerines on page 36.

US oranges All and Processing prices for P.H.D. and All and Proc. prices for Equiv. on Tree for the 2002-03 and the 2003-04 season on page 17. CA All oranges All and Processing prices for P.H.D. and All and Proc. prices for Equiv. on Tree for the 2002-03 and the 2003-04 seasons on page 20. CA Navels and Miscellaneous All, Fresh and Process for Equivalent on Tree for the 2003-04 season on page 21. CA Valencia Oranges All, Fresh and Process for Equivalent on Tree for the 2002-03 and 2003-04 season on page 21. CA and US Marketing Year Average, equivalent P.H.D. and Equiv on Tree prices for the 2002-03 season on page 38. CA and US Marketing Year Average, Equiv on Tree prices for the 2003-04 season on page 39.

Citrus Utilized Production Up 8 Percent, Value Up 4 Percent

Citrus production for the 2003-04 season totaled 16.4 million tons, 8 percent above the 2002-03 season, but 8 percent lower than the record high production of 17.8 million tons for the 1997-98 season. Florida accounted for 79 percent of total U.S. citrus production, California totaled 18 percent, while Texas and Arizona produced the remaining 3 percent.

Florida's orange production of 242 million boxes is up 19 percent from the previous season. Grapefruit utilization in Florida, at 40.9 million boxes, is up 6 percent from last season's utilization. Florida's total citrus utilization increased 16 percent from the previous season. Bearing acreage, at 679,000 acres, is the lowest since the 1993-94 season.

California decreased utilized citrus production by 17 percent from the 2002-03 season. California's all orange production, at 52.0 million boxes, is 16 percent lower than the previous season. Grapefruit production, at 5.40 million boxes, is down 4 percent from the 2002-03 season. Utilized production of citrus in Texas is up 2 percent from the 2002-03 season. Orange production increased 5 percent from the previous season and grapefruit production is up 1 percent. Arizona's total citrus production is up 7 percent from last season. Grapefruit utilized production is up 8 percent, while oranges and lemons are unchanged from the 2002-03 season.

The value of the 2003-04 U.S. citrus crop is up 4 percent from last season to \$2.35 billion (packinghouse-door equivalent). Total value of production for 2003-04 is higher for all types of citrus, except lemons, tangelos, and temples. Orange value of production increased 5 percent from last season and grapefruit value increased 13 percent. Tangerine value of production increased 7 percent from last season. Lemon, tangelo, and temple values are down 7 percent, 14 percent, and 14 percent, respectively.

Overall comparisons discussed above are based on like fruit types. Limes and K-Early Citrus are not included in U.S. comparisons because estimates were discontinued in the 2002-03 season. The revised production and utilization estimates are based on all data available at the end of the marketing season, including information from marketing orders, shipments, and processor records. Allowances are made for recorded local utilization and home use. Estimates for the 2003-04 California Valencia oranges and grapefruit are preliminary, since the marketing season is not complete at publication time. Revisions to the utilized production estimates for all citrus for the 2003-04 season will be available in the April 2005 *Crop Production* release.

**Citrus Fruits: Acreage, Production, Utilization, and Value by Crop,
United States, 2002-05**

Crop and Season	Bearing Acreage	Production	Utilization of Production		Value of Production ¹
			Fresh	Processed	
	<i>Acres</i>	<i>1,000 Tons</i>	<i>1,000 Tons</i>	<i>1,000 Tons</i>	<i>1,000 Dollars</i>
Oranges					
Early, Midseason and Navel					
2001-02	427,900	7,035	1,395	5,640	1,054,766
2002-03	423,000	6,680	1,626	5,054	881,496
2003-04	406,800	7,168	1,540	5,628	894,631
Valencia					
2001-02	369,700	5,339	762	4,577	791,433
2002-03	368,700	4,865	741	4,124	683,162
2003-04	354,600	5,762	639	5,123	751,225
All Oranges					
2001-02	797,600	12,374	2,157	10,217	1,846,199
2002-03	791,700	11,545	2,367	9,178	1,564,658
2003-04	761,400	12,930	2,179	10,751	1,645,856
Grapefruit					
2001-02	136,300	2,424	1,071	1,353	292,156
2002-03	128,500	2,063	965	1,098	263,490
2003-04	114,800	2,152	1,006	1,146	296,777
K-Early Citrus ²					
2001-02	200	1		1	113
2002-03					
2003-04					
Lemons					
2001-02	65,800	801	548	253	327,964
2002-03	61,800	1,026	557	469	291,425
2003-04	59,800	798	540	258	269,753
Limes ²					
2001-02	800	7	6	1	1,732
2002-03					
2003-04					
Tangelos					
2001-02	9,700	97	31	66	10,758
2002-03	9,100	105	27	78	11,489
2003-04	8,000	45	25	20	9,871
Tangerines ³					
2001-02	38,800	420	296	124	124,718
2002-03	36,600	382	292	90	117,462
2003-04	36,200	435	317	118	125,301
Temples					
2001-02	4,700	70	19	51	6,919
2002-03	4,200	59	14	45	5,591
2003-04	3,400	63	15	48	4,806

¹ Packinghouse-door equivalents.

² Estimates discontinued as of the 2002-03 crop.

³ FL only: 2002-03 includes Robinson, Fallglo, Sunburst, Dancy, and Honey varieties; 2003-04 through 2003-04 includes Fallglo, Sunburst, and Honey varieties only.

**Citrus Fruits: Acreage, Production, Utilization, and Value by
State, United States, 2002-04**

State	Bearing Acreage	Production	Utilization of Production		Value of Production ¹
			Fresh	Processed	
	<i>Acres</i>	<i>1,000 Tons</i>	<i>1,000 Tons</i>	<i>1,000 Tons</i>	<i>1,000 Dollars</i>
Total Citrus					
AZ					
2001-02	28,500	153	115	38	56,122
2002-03	27,300	152	92	60	40,355
2003-04	27,300	163	111	52	41,393
CA					
2001-02	269,500	2,907	2,380	527	932,175
2002-03	259,200	3,530	2,622	908	836,550
2003-04	250,000	2,917	2,391	526	908,381
FL					
2001-02	727,600	12,824	1,418	11,406	1,591,154
2002-03 ²	718,100	11,206	1,327	9,879	1,351,039
2003-04 ²	679,000	13,045	1,394	11,651	1,372,795
TX					
2001-02	28,300	310	215	95	31,108
2002-03	27,300	292	181	111	26,171
2003-04	27,300	298	186	112	29,795
US					
2001-02	1,053,900	16,194	4,128	12,066	2,610,559
2002-03 ²	1,031,900	15,180	4,222	10,958	2,254,115
2003-04 ²	983,600	16,423	4,082	12,341	2,352,364

¹ Packinghouse-door equivalents.

² Beginning in 2002-03, does not include K-Early Citrus, limes, or Robinson and Dancy tangerines.

**Oranges: Acreage, Yield, and Utilization
by State and Crop, 2002-04**

State, Crop and Season	Bearing Acreage	Yield per Acre	Utilization of Production		
			Fresh	Processed	Total
	<i>Acres</i>	<i>Boxes</i>	<i>1,000 Boxes¹</i>	<i>1,000 Boxes¹</i>	<i>1,000 Boxes¹</i>
AZ					
Navel and Misc.					
2001-02	3,500	77	209	61	270
2002-03	3,000	67	146	54	200
2003-04	3,000	100	198	102	300
Valencia					
2001-02	2,900	86	250		250
2002-03	2,800	96	253	17	270
2003-04	2,800	61	170		170
All					
2001-02	6,400	81	459	61	520
2002-03	5,800	81	399	71	470
2003-04	5,800	81	368	102	470
CA					
Navel and Misc.					
2001-02	130,000	246	27,900	4,100	32,000
2002-03	129,500	324	34,000	8,000	42,000
2003-04	130,000	292	33,000	5,000	38,000
Valencia					
2001-02	65,000	300	16,350	3,150	19,500
2002-03	60,000	333	15,800	4,200	20,000
2003-04	52,000	269	11,800	2,200	14,000
All					
2001-02	195,000	264	44,250	7,250	51,500
2002-03	189,500	327	49,800	12,200	62,000
2003-04	182,000	286	44,800	7,200	52,000
FL					
Early, Midseason					
2001-02	286,400	447	6,424	121,576	128,000
2002-03	283,000	396	6,773	105,227	112,000
2003-04	266,300	473	5,615	120,385	126,000
Valencia					
2001-02	300,500	339	2,957	99,043	102,000
2002-03	304,600	299	2,940	88,060	91,000
2003-04	298,500	389	4,066	111,934	116,000
All					
2001-02	586,900	392	9,381	220,619	230,000
2002-03	587,600	345	9,713	193,287	203,000
2003-04	564,800	428	9,681	232,319	242,000

¹ See page 46 for net weight per box.

Oranges: Price and Value by State and Crop, 2002-04

State, Crop and Season	Price per Box ^{1 2}			Value of Production		
	Fresh	Processed	All	Fresh	Processed	Total
	<i>Dollars</i>	<i>Dollars</i>	<i>Dollars</i>	<i>1,000 Dollars</i>	<i>1,000 Dollars</i>	<i>1,000 Dollars</i>
AZ						
Navel and Misc.						
2001-02	16.50	-0.15	12.74	3,449	-9	3,440
2002-03	9.46	0.40	7.02	1,381	22	1,403
2003-04	9.72	0.39	6.55	1,925	40	1,965
Valencia						
2001-02	3.42		3.42	855		855
2002-03	3.08	0.35	2.91	779	6	785
2003-04	4.74		4.74	806		806
All						
2001-02	9.38	-0.15	8.26	4,304	-9	4,295
2002-03	5.41	0.39	4.66	2,160	28	2,188
2003-04	7.42	0.39	5.90	2,731	40	2,771
CA						
Navel and Misc.						
2001-02	14.80	-0.15	12.88	412,920	-615	412,305
2002-03	9.76	0.40	7.98	331,840	3,200	335,040
2003-04	12.22	0.39	10.66	403,260	1,950	405,210
Valencia						
2001-02	8.82	0.74	7.51	144,207	2,331	146,538
2002-03	8.18	0.34	6.53	129,244	1,428	130,672
2003-04	12.84	0.32	10.87	151,512	704	152,216
All						
2001-02	12.59	0.24	10.85	557,127	1,716	558,843
2002-03	9.26	0.38	7.51	461,084	4,628	465,712
2003-04	12.38	0.37	10.72	554,772	2,654	557,426
FL						
Early, Midseason						
2001-02	6.80	4.84	4.94	43,683	588,428	632,111
2002-03	7.90	4.62	4.82	53,507	486,149	539,656
2003-04	6.85	3.68	3.82	38,463	443,017	481,480
Valencia						
2001-02	7.40	6.27	6.30	21,882	621,000	642,882
2002-03	7.50	6.00	6.05	22,050	528,360	550,410
2003-04	5.35	5.14	5.15	21,753	575,341	597,094
All						
2001-02	6.99	5.48	5.54	65,565	1,209,428	1,274,993
2002-03	7.78	5.25	5.37	75,557	1,014,509	1,090,066
2003-04	6.22	4.38	4.46	60,216	1,018,358	1,078,574

¹ Equivalent packinghouse-door returns.

² See page 47 for price per box calculations.

**Oranges: Acreage, Yield, and Utilization
by State and Crop, 2002-04**

State, Crop and Season	Bearing Acreage	Yield per Acre	Utilization of Production		
			Fresh	Processed	Total
	<i>Acres</i>	<i>Boxes</i>	<i>1,000 Boxes¹</i>	<i>1,000 Boxes¹</i>	<i>1,000 Boxes¹</i>
TX²					
Early, Midseason					
2001-02	8,000	191	1,228	302	1,530
2002-03	7,500	180	961	389	1,350
2003-04	7,500	189	998	422	1,420
Valencia					
2001-02	1,300	162	166	44	210
2002-03	1,300	169	167	53	220
2003-04	1,300	177	171	59	230
All					
2001-02	9,300	187	1,394	346	1,740
2002-03	8,800	178	1,128	442	1,570
2003-04	8,800	188	1,169	481	1,650
US					
Early, Midseason and Navel					
2001-02	427,900	378	35,761	126,039	161,800
2002-03	423,000	368	41,880	113,670	155,550
2003-04	406,800	407	39,811	125,909	165,720
Valencia					
2001-02	369,700	330	19,723	102,237	121,960
2002-03	368,700	302	19,160	92,330	111,490
2003-04	354,600	368	16,207	114,193	130,400
Total					
2001-02	797,600	356	55,484	228,276	283,760
2002-03	791,700	337	61,040	206,000	267,040
2003-04	761,400	389	56,018	240,102	296,120

¹ See page 46 for net weight per box.

² Includes small quantities of tangerines in Early, Midseason.

Oranges: Price and Value by State and Crop, 2002-04

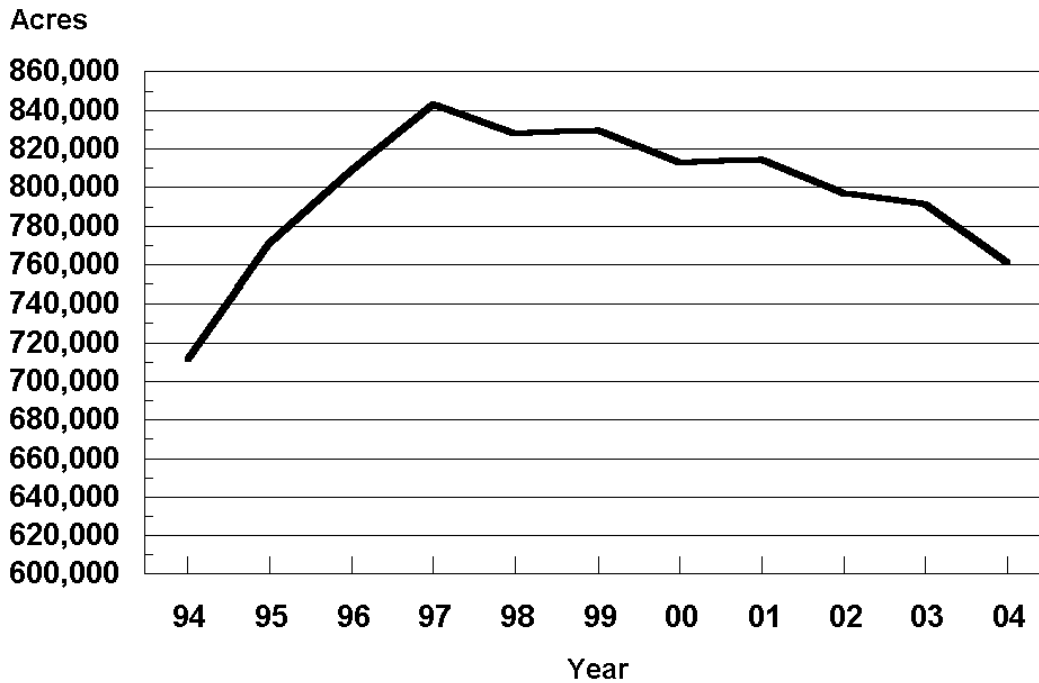
State, Crop and Season	Price per Box ^{1 2}			Value of Production		
	Fresh	Processed	All	Fresh	Processed	Total
	<i>Dollars</i>	<i>Dollars</i>	<i>Dollars</i>	<i>1,000 Dollars</i>	<i>1,000 Dollars</i>	<i>1,000 Dollars</i>
TX³						
Early, Midseason						
2001-02	5.00	2.55	4.52	6,140	770	6,910
2002-03	4.41	2.98	4.00	4,238	1,159	5,397
2003-04	4.91	2.55	4.21	4,900	1,076	5,976
Valencia						
2001-02	6.30	2.55	5.51	1,046	112	1,158
2002-03	6.81	2.98	5.89	1,137	158	1,295
2003-04	5.61	2.55	4.82	959	150	1,109
All						
2001-02	5.15	2.55	4.64	7,186	882	8,068
2002-03	4.77	2.98	4.26	5,375	1,317	6,692
2003-04	5.01	2.55	4.29	5,859	1,226	7,085
US						
Early, Midseason and Navel						
2001-02	12.79	4.70	6.30	466,192	588,574	1,054,766
2002-03	9.28	4.36	5.56	390,966	490,530	881,496
2003-04	11.13	3.56	5.19	448,548	446,083	894,631
Valencia						
2001-02	8.48	6.13	6.46	167,990	623,443	791,433
2002-03	7.98	5.78	6.12	153,210	529,952	683,162
2003-04	10.53	5.06	5.67	175,030	576,195	751,225
Total						
2001-02	11.26	5.34	6.37	634,182	1,212,017	1,846,199
2002-03	8.87	5.00	5.79	544,176	1,020,482	1,564,658
2003-04	10.95	4.28	5.40	623,578	1,022,278	1,645,856

¹ Equivalent packinghouse-door returns.

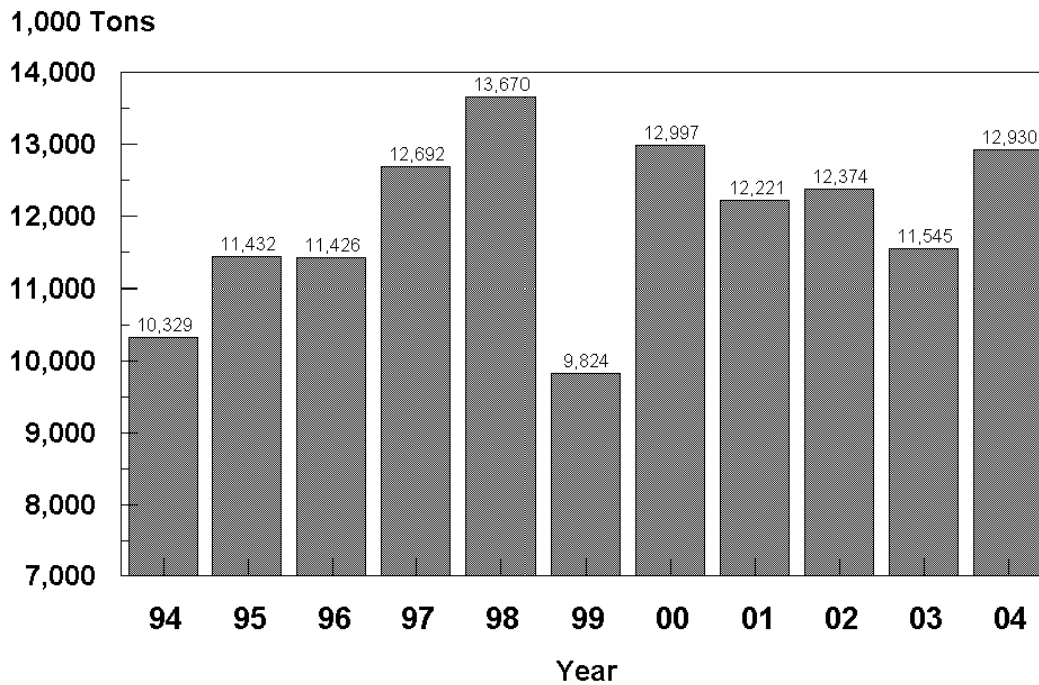
² See page 47 for price per box calculations.

³ Includes small quantities of tangerines in Early, Midseason.

U.S. Oranges Bearing Acres



U.S. Oranges Utilized Production



Frozen Concentrated Orange Juice Yield, Florida, 2002-04^{1 2}

Season	Early, Midseason	Valencia	All
	<i>Gallons per Box</i>	<i>Gallons per Box</i>	<i>Gallons per Box</i>
2001-02	1.52774	1.65789	1.58160
2002-03	1.49199	1.60587	1.53659
2003-04	1.44559	1.69155	1.55649

¹ Gallons per box at 42.0 degrees Brix.

² Per Florida Citrus Processors Association.

Oranges Processed, by Product Type, Florida, 2002-04^{1 2}

Season	Frozen Concentrates	Chilled Products	Other Processed ³	Total Processed
	<i>1,000 Boxes</i>	<i>1,000 Boxes</i>	<i>1,000 Boxes</i>	<i>1,000 Boxes</i>
2001-02	135,975	85,869	1,385	223,229
2002-03	102,073	92,506	1,445	196,024
2003-04	139,727	93,393	713	233,833

¹ Includes tangelos, Temples, and K-Early Citrus.

² Per Florida Citrus Processors Association.

³ Includes sections and salads, canned juice, and blend.

Grapefruit Processed, by Product Type, Florida, 2002-04¹

Season	Frozen Concentrates	Chilled Products	Other Processed ²	Total Processed
	<i>1,000 Boxes</i>	<i>1,000 Boxes</i>	<i>1,000 Boxes</i>	<i>1,000 Boxes</i>
2001-02	21,686	6,414	1,206	29,306
2002-03	15,958	6,221	932	23,111
2003-04	17,186	6,586	490	24,262

¹ Per Florida Citrus Processors Association.

² Includes sections and salads, canned juice, and blend.

Tangerines Processed, by Product Type, Florida, 2002-04¹

Season	Frozen Concentrates	Chilled Products	Other Processed ²	Total Processed
	<i>1,000 Boxes</i>	<i>1,000 Boxes</i>	<i>1,000 Boxes</i>	<i>1,000 Boxes</i>
2001-02	1,174		1,212	2,386
2002-03	971		615	1,586
2003-04	829		1,231	2,060

¹ Per Florida Citrus Processors Association.

² Includes sections and salads, canned juice, and blend.

**Grapefruit: Acreage, Yield, and Utilization
by State, Crop, and United States, 2002-04**

State, Crop and Season	Bearing Acreage	Yield per Acre	Utilization of Production		
			Fresh	Processed	Total
	<i>Acres</i>	<i>Boxes</i>	<i>1,000 Boxes¹</i>	<i>1,000 Boxes¹</i>	<i>1,000 Boxes¹</i>
AZ					
All					
2001-02	2,000	80	153	7	160
2002-03	1,500	87	124	6	130
2003-04	1,500	93	140		140
CA					
All					
2001-02	14,000	421	5,100	800	5,900
2002-03	13,000	431	4,900	700	5,600
2003-04	12,500	432	4,700	700	5,400
FL					
White Seedless ²					
2001-02	40,800	463	3,530	15,370	18,900
2002-03	38,600	420	3,172	13,028	16,200
2003-04	31,300	508	3,282	12,618	15,900
Colored Seedless					
2001-02	60,500	460	13,864	13,936	27,800
2002-03	56,900	395	12,417	10,083	22,500
2003-04	51,000	490	13,356	11,644	25,000
All					
2001-02	101,300	461	17,394	29,306	46,700
2002-03	95,500	405	15,589	23,111	38,700
2003-04	82,300	497	16,638	24,262	40,900
TX					
All					
2001-02	19,000	311	3,900	2,000	5,900
2002-03	18,500	305	3,317	2,333	5,650
2003-04	18,500	308	3,418	2,282	5,700
US					
Total					
2001-02	136,300	430	26,547	32,113	58,660
2002-03	128,500	390	23,930	26,150	50,080
2003-04	114,800	454	24,896	27,244	52,140

¹ See page 46 for net weight per box.

² "Other" seedy grapefruit estimates included with white seedless.

Grapefruit: Price and Value by State, Crop, and United States, 2002-04

State, Crop and Season	Price per Box ^{1 2}			Value of Production		
	Fresh	Processed	All	Fresh	Processed	Total
	<i>Dollars</i>	<i>Dollars</i>	<i>Dollars</i>	<i>1,000 Dollars</i>	<i>1,000 Dollars</i>	<i>1,000 Dollars</i>
AZ						
All						
2001-02	7.05	-0.25	6.73	1,079	-2	1,077
2002-03	8.12	-0.26	7.73	1,007	-2	1,005
2003-04	9.69		9.69	1,357		1,357
CA						
All						
2001-02	9.35	-0.25	8.05	47,685	-200	47,485
2002-03	13.22	-0.26	11.54	64,778	-182	64,596
2003-04	13.80	-0.27	11.98	64,860	-189	64,671
FL						
White Seedless ³						
2001-02	8.73	3.32	4.33	30,817	51,028	81,845
2002-03	9.57	2.51	3.89	30,356	32,700	63,056
2003-04	9.40	2.17	3.66	30,851	27,381	58,232
Colored Seedless						
2001-02	7.10	2.89	4.99	98,434	40,275	138,709
2002-03	7.13	2.66	5.13	88,533	26,821	115,354
2003-04	9.22	2.29	5.99	123,142	26,665	149,807
All						
2001-02	7.43	3.12	4.72	129,251	91,303	220,554
2002-03	7.63	2.58	4.61	118,889	59,521	178,410
2003-04	9.26	2.23	5.09	153,993	54,046	208,039
TX						
All						
2001-02	5.60	0.60	3.91	21,840	1,200	23,040
2002-03	5.31	0.80	3.45	17,613	1,866	19,479
2003-04	6.01	0.95	3.98	20,542	2,168	22,710
US						
Total						
2001-02	7.47	2.90	4.92	199,855	92,301	292,156
2002-03	8.26	2.36	5.12	202,287	61,203	263,490
2003-04	9.53	2.07	5.56	240,752	56,025	296,777

¹ Equivalent packinghouse-door returns.

² See page 47 for price per box calculation.

³ "Other" seedy grapefruit estimates included with white seedless.

**K-Early Citrus, Lemons, Limes, Tangelos, Tangerines, and Temples:
Acreage, Yield, and Utilization by Crop and State, 2002-04**

Crop, State and Season	Bearing Acreage	Yield per Acre	Utilization of Production		
			Fresh	Processed	Total
	<i>Acres</i>	<i>Boxes</i>	<i>1,000 Boxes¹</i>	<i>1,000 Boxes¹</i>	<i>1,000 Boxes¹</i>
K-Early Citrus					
FL					
2001-02	200	150	6	24	30
2002-03 ²					
2003-04 ²					
Lemons					
AZ					
2001-02	14,800	189	1,902	898	2,800
2002-03	14,800	203	1,546	1,454	3,000
2003-04	14,800	203	2,008	992	3,000
CA					
2001-02	51,000	359	12,520	5,780	18,300
2002-03	47,000	511	13,100	10,900	24,000
2003-04	45,000	400	12,200	5,800	18,000
US					
2001-02	65,800	321	14,422	6,678	21,100
2002-03	61,800	437	14,646	12,354	27,000
2003-04	59,800	351	14,208	6,792	21,000
Limes					
FL					
2001-02	800	188	125	25	150
2002-03 ²					
2003-04 ²					
Tangelos					
FL					
2001-02	9,700	222	696	1,454	2,150
2002-03	9,100	258	608	1,742	2,350
2003-04	8,000	125	545	455	1,000
Tangerines					
AZ ³					
2001-02	5,300	117	571	49	620
2002-03	5,200	83	377	53	430
2003-04	5,200	133	466	224	690
CA ³					
2001-02	9,500	232	1,970	230	2,200
2002-03	9,700	289	2,450	350	2,800
2003-04	10,500	257	2,374	326	2,700
FL ⁴					
2001-02	24,000	275	4,214	2,386	6,600
2002-03	21,700	253	3,914	1,586	5,500
2003-04	20,500	317	4,440	2,060	6,500
US ³					
2001-02	38,800	243	6,755	2,665	9,420
2002-03	36,600	239	6,741	1,989	8,730
2003-04	36,200	273	7,280	2,610	9,890
Temples					
FL					
2001-02	4,700	330	418	1,132	1,550
2002-03	4,200	310	305	995	1,300
2003-04	3,400	412	341	1,059	1,400

¹ See page 46 for net weight per box.

² Estimates discontinued as of the 2002-03 crop.

³ Includes tangelos and tangors.

⁴ 2001-02 includes Robinson, Fallglo, Sunburst, Dancy, and Honey varieties; starting with 2002-03 season includes Fallglo, Sunburst, and Honey varieties only.

**K-Early Citrus, Lemons, Limes, Tangelos, Tangerines, and Temples:
Price and Value by Crop and State, 2002-04**

Crop, State and Season	Price per Box ^{1 2}			Value of Production		
	Fresh	Processed	All	Fresh	Processed	Total
	<i>Dollars</i>	<i>Dollars</i>	<i>Dollars</i>	<i>1,000 Dollars</i>	<i>1,000 Dollars</i>	<i>1,000 Dollars</i>
K-Early Citrus						
FL						
2001-02	6.80	3.00	3.77	41	72	113
2002-03 ³						
2003-04 ³						
Lemons						
AZ						
2001-02	21.41	0.24	14.62	40,722	216	40,938
2002-03	18.80	0.22	9.80	29,065	320	29,385
2003-04	14.40	0.20	9.70	28,915	198	29,113
CA						
2001-02	22.81	0.25	15.68	285,581	1,445	287,026
2002-03	19.82	0.22	10.92	259,642	2,398	262,040
2003-04	19.62	0.22	13.37	239,364	1,276	240,640
US						
2001-02	22.63	0.25	15.54	326,303	1,661	327,964
2002-03	19.71	0.22	10.79	288,707	2,718	291,425
2003-04	18.88	0.22	12.85	268,279	1,474	269,753
Limes						
FL						
2001-02	13.50	1.75	11.55	1,688	44	1,732
2002-03 ³						
2003-04 ³						
Tangelos						
FL						
2001-02	8.50	3.33	5.00	5,916	4,842	10,758
2002-03	9.90	3.14	4.89	6,019	5,470	11,489
2003-04	16.25	2.23	9.87	8,856	1,015	9,871
Tangerines						
AZ ⁴						
2001-02	17.12	0.74	15.83	9,776	36	9,812
2002-03	20.58	0.34	18.09	7,759	18	7,777
2003-04	17.34	0.32	11.81	8,080	72	8,152
CA ⁴						
2001-02	19.62	0.74	17.65	38,651	170	38,821
2002-03	17.98	0.43	15.79	44,051	151	44,202
2003-04	19.18	0.34	16.91	45,533	111	45,644
FL ⁵						
2001-02	16.00	3.63	11.53	67,424	8,661	76,085
2002-03	15.30	3.53	11.91	59,884	5,599	65,483
2003-04	14.75	2.92	11.00	65,490	6,015	71,505
US ⁴						
2001-02	16.99	3.39	12.97	115,851	8,867	124,718
2002-03	16.40	3.01	13.23	111,694	5,768	117,462
2003-04	16.14	2.47	12.42	119,103	6,198	125,301
Temples						
FL						
2001-02	7.10	3.49	4.46	2,968	3,951	6,919
2002-03	5.90	3.81	4.30	1,800	3,791	5,591
2003-04	6.05	2.59	3.43	2,063	2,743	4,806

¹ Equivalent packinghouse-door returns.

² See page 47 for price per box calculation.

³ Estimates discontinued as of the 2002-03 crop.

⁴ Includes tangelos and tangors.

⁵ 2001-02 includes Robinson, Fallglo, Sunburst, Dancy, and Honey varieties; starting with 2002-03 season includes Fallglo, Sunburst, and Honey varieties only.

Citrus Prices

Revised State and U.S. monthly average prices and equivalent returns, and marketing year average prices for the 2001-02, 2002-03, and 2003-04 citrus crops are shown on the following pages. Revised monthly prices refer to all fruit sold in a given month regardless of the crop year in which the fruit was harvested.

Marketing year average prices refer to the prices received by growers for the entire marketing season for any one crop year. The crop year 2003-04 as shown on all citrus tables in this publication refers to the crop which bloomed in 2003 and was marketed during the 2003-04 season. For example, the 2003-04 marketing year average price received by California growers for tangerines refers to marketings from November 2003 through May 2004. In some years the season may vary a month or two but a price was estimated only for those months with sufficient movement.

Monthly and marketing year average prices are weighted by box size at the U.S. level for grapefruit, oranges, and tangerines. See page 46 for approximate net contents per box at the State level.

Citrus prices are based on weighted average f.o.b. packed prices received for fresh fruit and weighted average prices received at the processing plant door for processing fruit. Equivalent returns for fresh and processed fruits are calculated at the packinghouse-door level and on-tree level by deducting hauling, picking, sorting, grading, packing, cooling, marketing, and other costs from the two base prices. In some cases, this results in negative returns.

**Oranges: Average Prices and Equivalent Returns, United States
September 2001 - August 2004**

State, Month, and Year	F.O.B. Packed	Equiv. P.H.D.			Equiv. On-Tree		
		All	Fresh	Proc.	All	Fresh	Proc.
US							
	All Oranges						
	<i>Dollars per box</i>	<i>Dollars per box</i>	<i>Dollars per box</i>	<i>Dollars per box</i>	<i>Dollars per box</i>	<i>Dollars per box</i>	<i>Dollars per box</i>
Sep	17.40	8.54	10.76	0.76	6.20	8.42	-1.58
Oct	16.50	7.42	9.32	1.65	5.21	7.11	-0.58
Nov	19.50	5.59	11.97	4.58	3.52	9.78	2.53
Dec	19.40	5.75	12.01	4.66	3.67	9.78	2.61
Jan 2002	20.20	5.94	12.86	4.80	3.86	10.60	2.75
Feb	20.10	6.16	12.77	4.81	4.07	10.48	2.75
Mar	19.10	7.13	11.88	5.93	4.99	9.57	3.83
Apr	19.50	6.92	12.34	6.06	4.78	10.01	3.95
May	17.30	6.68	10.31	6.19	4.55	7.98	4.09
Jun	14.70	6.36	7.82	6.05	4.20	5.47	3.94
Jul	14.30	6.49	7.49	0.74	4.10	5.10	-1.65
Aug	15.40	7.67	8.62	0.74	5.28	6.23	-1.65
Sep	15.50	7.72	8.72	0.74	5.33	6.33	-1.65
Oct	16.80	7.44	9.54	3.35	5.22	7.31	1.13
Nov	18.30	5.38	10.77	4.44	3.17	8.53	2.24
Dec	17.00	5.32	9.59	4.52	3.10	7.29	2.32
Jan 2003	14.80	4.98	7.34	4.60	2.77	5.03	2.40
Feb	13.90	5.00	6.55	4.51	2.75	4.20	2.30
Mar	15.90	6.32	8.62	5.60	4.07	6.26	3.39
Apr	17.30	6.53	10.05	5.82	4.29	7.67	3.62
May	17.50	6.54	10.25	5.83	4.31	7.87	3.62
Jun	16.90	6.81	9.88	5.53	4.54	7.47	3.31
Jul	14.70	6.22	7.80	0.35	3.78	5.36	-2.09
Aug	15.00	6.15	8.08	0.34	3.71	5.64	-2.10
Sep	14.30	5.44	7.38	0.34	3.00	4.94	-2.10
Oct	15.60	5.06	8.06	1.39	2.78	5.75	-0.87
Nov	18.80	4.41	11.02	3.33	2.32	8.71	1.28
Dec	18.10	4.65	10.44	3.59	2.55	8.09	1.54
Jan 2004	17.40	4.55	9.78	3.74	2.45	7.41	1.69
Feb	17.50	5.14	9.93	4.05	3.02	7.54	1.99
Mar	19.10	5.88	11.56	4.51	3.68	9.15	2.36
Apr	18.30	5.87	10.83	5.11	3.68	8.43	2.95
May	18.60	5.78	11.12	5.10	3.60	8.71	2.94
Jun	19.00	6.33	11.50	5.22	4.13	9.11	3.07
Jul	19.70	11.34	12.64	0.32	8.85	10.15	-2.17
Aug	20.70	10.98	13.64	0.32	8.49	11.15	-2.17

**Oranges: Average Prices and Equivalent Returns, Arizona
November 2001 - April 2004**

State, Month, and Year	F.O.B. Packed	Equiv. P.H.D.			Equiv. On-Tree		
		All	Fresh	Proc.	All	Fresh	Proc.
AZ							
	All Oranges						
	<i>Dollars per box</i>	<i>Dollars per box</i>	<i>Dollars per box</i>	<i>Dollars per box</i>	<i>Dollars per box</i>	<i>Dollars per box</i>	<i>Dollars per box</i>
Nov	24.70	15.06	17.60	-0.15	12.71	15.25	-2.50
Dec	24.40	12.17	17.30	-0.15	9.82	14.95	-2.50
Jan 2002	24.40	14.36	17.30	-0.15	12.01	14.95	-2.50
Feb	21.60	11.57	14.50	-0.15	9.22	12.15	-2.50
Mar	18.90	10.58	11.96	-0.15	8.21	9.58	-2.50
Apr	10.20	3.42	3.42		1.03	1.03	
May	9.48	2.70	2.70		0.31	0.31	
Jun	9.42	2.64	2.64		0.25	0.25	
Jul	5.60	-1.18	-1.18		-3.57	-3.57	
Nov	20.40	10.16	13.16	0.40	7.76	10.76	-2.00
Dec	17.50	7.54	10.26	0.40	5.14	7.86	-2.00
Jan 2003	13.70	4.77	6.46	0.40	2.37	4.06	-2.00
Feb							
Mar	15.80	8.88	8.88		6.44	6.44	
Apr	9.65	2.73	2.73		0.29	0.29	
May	9.04	1.76	2.12	0.34	-0.68	-0.32	-2.10
Jun	9.60	2.68	2.68		0.24	0.24	
Nov	19.00	6.01	11.62	0.39	3.56	9.17	-2.06
Dec	17.60	7.25	10.22	0.39	4.80	7.77	-2.06
Jan 2004	17.20	6.77	9.82	0.39	4.32	7.37	-2.06
Feb	16.00	5.88	8.68	0.39	3.43	6.23	-2.06
Mar	14.20	5.90	7.04	0.39	3.42	4.56	-2.06
Apr	11.30	4.24	4.24		1.75	1.75	

**Oranges: Average Prices and Equivalent Returns, Arizona
November 2001 - April 2004**

State, Month, and Year	F.O.B. Packed	Equiv. P.H.D.			Equiv. On-Tree		
		All	Fresh	Proc.	All	Fresh	Proc.
AZ							
Early and Midseason							
	<i>Dollars per box</i>	<i>Dollars per box</i>	<i>Dollars per box</i>	<i>Dollars per box</i>	<i>Dollars per box</i>	<i>Dollars per box</i>	<i>Dollars per box</i>
Nov	24.70	15.06	17.60	-0.15	12.71	15.25	-2.50
Dec	24.40	12.17	17.30	-0.15	9.82	14.95	-2.50
Jan 2002	24.40	14.36	17.30	-0.15	12.01	14.95	-2.50
Feb	21.60	11.57	14.50	-0.15	9.22	12.15	-2.50
Mar	20.40	10.10	13.30	-0.15	7.75	10.95	-2.50
Nov	20.40	10.16	13.16	0.40	7.76	10.76	-2.00
Dec	17.50	7.54	10.26	0.40	5.14	7.86	-2.00
Jan 2003	13.70	4.77	6.46	0.40	2.37	4.06	-2.00
Nov	19.00	6.01	11.62	0.39	3.56	9.17	-2.06
Dec	17.60	7.25	10.22	0.39	4.80	7.77	-2.06
Jan 2004	17.20	6.77	9.82	0.39	4.32	7.37	-2.06
Feb	16.90	6.29	9.52	0.39	3.84	7.07	-2.06
Mar	15.60	5.24	8.22	0.39	2.79	5.77	-2.06
AZ							
Valencias							
Mar 2002	17.80	11.02	11.02		8.63	8.63	
Apr	10.20	3.42	3.42		1.03	1.03	
May	9.48	2.70	2.70		0.31	0.31	
Jun	9.42	2.64	2.64		0.25	0.25	
Jul	5.60	-1.18	-1.18		-3.57	-3.57	
Mar 2003	15.80	8.88	8.88		6.44	6.44	
Apr	9.65	2.73	2.73		0.29	0.29	
May	9.04	1.76	2.12	0.34	-0.68	-0.32	-2.10
Jun	9.60	2.68	2.68		0.24	0.24	
Feb 2004	4.00	-3.06	-3.06		-5.55	-5.55	
Mar	13.50	6.44	6.44		3.95	3.95	
Apr	11.30	4.24	4.24		1.75	1.75	

**Oranges: Average Prices and Equivalent Returns, California
September 2001 - August 2004**

State, Month, and Year	F.O.B. Packed	Equiv. P.H.D.			Equiv. On-Tree		
		All	Fresh	Proc.	All	Fresh	Proc.
CA							
	All Oranges						
	<i>Dollars per box</i>	<i>Dollars per box</i>	<i>Dollars per box</i>	<i>Dollars per box</i>	<i>Dollars per box</i>	<i>Dollars per box</i>	<i>Dollars per box</i>
Sep	17.40	8.54	10.76	0.76	6.20	8.42	-1.58
Oct	16.30	7.23	9.66	0.76	4.89	7.32	-1.58
Nov	26.50	17.45	19.40	-0.15	15.10	17.05	-2.50
Dec	23.30	14.34	16.20	-0.15	11.99	13.85	-2.50
Jan 2002	22.20	14.05	15.10	-0.15	11.70	12.75	-2.50
Feb	21.00	12.36	13.87	-0.08	10.00	11.51	-2.43
Mar	19.80	10.66	12.74	-0.02	8.31	10.39	-2.38
Apr	20.40	10.70	13.36	0.10	8.34	11.00	-2.26
May	18.10	9.45	11.23	0.52	7.07	8.86	-1.86
Jun	14.60	6.53	7.82	0.74	4.14	5.43	-1.65
Jul	14.30	6.52	7.52	0.74	4.13	5.13	-1.65
Aug	15.40	7.67	8.62	0.74	5.28	6.23	-1.65
Sep	15.50	7.72	8.72	0.74	5.33	6.33	-1.65
Oct	15.80	7.78	9.02	0.74	5.39	6.63	-1.65
Nov	20.70	11.95	13.46	0.40	9.54	11.05	-2.01
Dec	17.90	9.84	10.66	0.40	7.43	8.25	-2.01
Jan 2003	15.30	6.95	8.06	0.40	4.54	5.65	-2.01
Feb	13.90	5.52	6.67	0.40	3.11	4.26	-2.01
Mar	16.10	7.02	8.86	0.40	4.61	6.45	-2.01
Apr	18.00	8.72	10.83	0.40	6.30	8.41	-2.02
May	18.20	9.04	11.07	0.39	6.62	8.65	-2.03
Jun	16.50	7.97	9.52	0.37	5.53	7.09	-2.06
Jul	14.70	6.22	7.80	0.35	3.78	5.36	-2.09
Aug	15.00	6.15	8.08	0.34	3.71	5.64	-2.10
Sep	14.30	5.44	7.38	0.34	3.00	4.94	-2.10
Oct	14.20	4.27	7.28	0.34	1.83	4.84	-2.10
Nov	22.00	12.91	14.62	0.39	10.45	12.16	-2.07
Dec	19.80	11.76	12.42	0.39	9.30	9.96	-2.07
Jan 2004	18.30	9.92	10.92	0.39	7.46	8.46	-2.07
Feb	18.40	9.85	10.99	0.39	7.38	8.53	-2.07
Mar	20.10	11.02	12.74	0.38	8.55	10.28	-2.08
Apr	19.50	10.02	12.21	0.38	7.55	9.75	-2.08
May	19.90	10.52	12.60	0.38	8.05	10.13	-2.08
Jun	21.20	12.65	14.02	0.34	10.17	11.53	-2.14
Jul	19.70	11.34	12.64	0.32	8.85	10.15	-2.17
Aug	20.70	10.98	13.64	0.32	8.49	11.15	-2.17

**Oranges: Average Prices and Equivalent Returns, California
November 2001 - August 2004**

State, Month, and Year	F.O.B. Packed	Equiv. P.H.D.			Equiv. On-Tree		
		All	Fresh	Proc.	All	Fresh	Proc.
CA		Navels and Miscellaneous					
	<i>Dollars per box</i>	<i>Dollars per box</i>	<i>Dollars per box</i>	<i>Dollars per box</i>	<i>Dollars per box</i>	<i>Dollars per box</i>	<i>Dollars per box</i>
Nov	26.50	17.45	19.40	-0.15	15.10	17.05	-2.50
Dec	23.30	14.34	16.20	-0.15	11.99	13.85	-2.50
Jan 2002	22.20	14.05	15.10	-0.15	11.70	12.75	-2.50
Feb	20.90	12.33	13.80	-0.15	9.98	11.45	-2.50
Mar	20.00	10.81	12.90	-0.15	8.46	10.55	-2.50
Apr	21.60	11.68	14.50	-0.15	9.33	12.15	-2.50
May	24.20	14.64	17.10	-0.15	12.29	14.75	-2.50
Nov	20.70	11.95	13.46	0.40	9.54	11.05	-2.01
Dec	17.90	9.84	10.66	0.40	7.43	8.25	-2.01
Jan 2003	15.30	6.95	8.06	0.40	4.54	5.65	-2.01
Feb	13.80	5.39	6.56	0.40	2.98	4.15	-2.01
Mar	16.00	6.82	8.76	0.40	4.41	6.35	-2.01
Apr	18.20	8.48	10.96	0.40	6.07	8.55	-2.01
May	19.60	9.44	12.36	0.40	7.03	9.95	-2.01
Jun	22.40	10.94	15.16	0.40	8.53	12.75	-2.01
Jul	20.10	8.71	12.86	0.40	6.30	10.45	-2.01
Nov	22.00	12.91	14.62	0.39	10.45	12.16	-2.07
Dec	19.80	11.76	12.42	0.39	9.30	9.96	-2.07
Jan 2004	18.30	9.92	10.92	0.39	7.46	8.46	-2.07
Feb	18.40	9.84	11.02	0.39	7.38	8.56	-2.07
Mar	20.20	11.00	12.82	0.39	8.54	10.36	-2.07
Apr	19.80	9.97	12.42	0.39	7.51	9.96	-2.07
May	20.40	10.17	13.02	0.39	7.71	10.56	-2.07
Jun	23.00	13.93	15.62	0.39	11.47	13.16	-2.07
CA		Valencias					
Feb 2002	22.00	12.81	15.22	0.74	10.42	12.83	-1.65
Mar	18.40	9.64	11.62	0.74	7.25	9.23	-1.65
Apr	16.70	7.88	9.92	0.74	5.49	7.53	-1.65
May	15.50	7.31	8.72	0.74	4.92	6.33	-1.65
Jun	14.60	6.53	7.82	0.74	4.14	5.43	-1.65
Jul	14.30	6.52	7.52	0.74	4.13	5.13	-1.65
Aug	15.40	7.67	8.62	0.74	5.28	6.23	-1.65
Sep	15.50	7.72	8.72	0.74	5.33	6.33	-1.65
Oct	15.80	7.78	9.02	0.74	5.39	6.63	-1.65
Feb 2003	17.00	10.08	10.08		7.64	7.64	
Mar	16.50	8.66	9.58	0.34	6.22	7.14	-2.10
Apr	17.30	9.75	10.38	0.34	7.31	7.94	-2.10
May	16.00	8.29	9.08	0.34	5.85	6.64	-2.10
Jun	14.50	6.70	7.58	0.34	4.26	5.14	-2.10
Jul	14.30	5.97	7.38	0.34	3.53	4.94	-2.10
Aug	15.00	6.15	8.08	0.34	3.71	5.64	-2.10
Sep	14.30	5.44	7.38	0.34	3.00	4.94	-2.10
Oct	14.20	4.27	7.28	0.34	1.83	4.84	-2.10
Feb 2004	17.10	10.04	10.04		7.55	7.55	
Mar	19.30	11.16	12.24	0.32	8.67	9.75	-2.17
Apr	18.30	10.25	11.24	0.32	7.76	8.75	-2.17
May	19.00	11.21	11.94	0.32	8.72	9.45	-2.17
Jun	20.40	12.10	13.34	0.32	9.61	10.85	-2.17
Jul	19.70	11.34	12.64	0.32	8.85	10.15	-2.17
Aug	20.70	10.98	13.64	0.32	8.49	11.15	-2.17

**Oranges: Average Prices and Equivalent Returns, Florida
October 2001 - June 2004**

State, Month, and Year	F.O.B. Packed	Equiv. P.H.D.			Equiv. On-Tree		
		All	Fresh	Proc.	All	Fresh	Proc.
FL							
	All Oranges						
	<i>Dollars per box</i>	<i>Dollars per box</i>	<i>Dollars per box</i>	<i>Dollars per box</i>	<i>Dollars per box</i>	<i>Dollars per box</i>	<i>Dollars per box</i>
Oct	16.00	7.58	8.40	4.40	5.45	6.25	2.35
Nov	14.90	4.84	7.30	4.62	2.78	5.15	2.57
Dec	13.70	4.81	6.10	4.73	2.76	3.95	2.68
Jan 2002	14.10	4.90	6.50	4.85	2.85	4.35	2.80
Feb	14.20	4.95	6.60	4.92	2.90	4.45	2.87
Mar	15.20	6.24	7.57	6.19	4.15	5.42	4.10
Apr	14.00	6.27	6.40	6.27	4.17	4.25	4.17
May	14.80	6.34	7.20	6.32	4.24	5.05	4.22
Jun	16.10	6.34	8.50	6.26	4.24	6.35	4.16
Oct	17.70	7.21	10.10	3.88	5.03	7.95	1.68
Nov	15.60	4.74	8.00	4.49	2.54	5.85	2.29
Dec	15.60	4.78	8.00	4.57	2.58	5.85	2.37
Jan 2003	13.50	4.74	5.90	4.70	2.54	3.75	2.50
Feb	14.00	4.85	6.40	4.78	2.65	4.23	2.58
Mar	15.10	6.09	7.50	6.04	3.89	5.30	3.84
Apr	13.50	6.07	5.90	6.07	3.87	3.70	3.87
May	13.50	6.05	5.90	6.05	3.85	3.70	3.85
Jun	20.00	6.29	12.40	5.94	4.09	10.20	3.74
Oct	16.80	5.70	8.65	2.65	3.57	6.45	0.60
Nov	15.50	3.65	7.35	3.37	1.59	5.15	1.32
Dec	14.70	3.77	6.55	3.62	1.71	4.35	1.57
Jan 2004	13.60	3.83	5.45	3.79	1.77	3.25	1.74
Feb	12.80	4.17	4.64	4.15	2.10	2.44	2.09
Mar	13.00	4.67	4.84	4.66	2.52	2.64	2.52
Apr	12.70	5.23	4.55	5.25	3.08	2.35	3.10
May	12.60	5.18	4.45	5.20	3.03	2.25	3.05
Jun	14.90	5.40	6.75	5.30	3.25	4.55	3.15

**Oranges: Average Prices and Equivalent Returns, Florida
October 2001 - June 2004**

State, Month, and Year	F.O.B. Packed	Equiv. P.H.D.			Equiv. On-Tree		
		All	Fresh	Proc.	All	Fresh	Proc.
FL							
Early and Midseason							
	<i>Dollars per box</i>	<i>Dollars per box</i>	<i>Dollars per box</i>	<i>Dollars per box</i>	<i>Dollars per box</i>	<i>Dollars per box</i>	<i>Dollars per box</i>
Oct	16.00	7.58	8.40	4.40	5.45	6.25	2.35
Nov	14.90	4.84	7.30	4.62	2.78	5.15	2.57
Dec	13.70	4.81	6.10	4.73	2.76	3.95	2.68
Jan 2002	14.10	4.90	6.50	4.85	2.85	4.35	2.80
Feb	14.20	4.95	6.60	4.92	2.90	4.45	2.87
Mar	13.10	6.19	5.50	6.19	4.14	3.35	4.14
Oct	17.70	7.21	10.10	3.88	5.03	7.95	1.68
Nov	15.60	4.74	8.00	4.49	2.54	5.85	2.29
Dec	15.60	4.78	8.00	4.57	2.58	5.85	2.37
Jan 2003	13.50	4.74	5.90	4.70	2.54	3.75	2.50
Feb	13.40	4.81	5.80	4.78	2.61	3.65	2.58
Oct	16.80	5.70	8.65	2.65	3.57	6.45	0.60
Nov	15.50	3.65	7.35	3.37	1.59	5.15	1.32
Dec	14.70	3.77	6.55	3.62	1.71	4.35	1.57
Jan 2004	13.60	3.83	5.45	3.79	1.77	3.25	1.74
Feb	12.00	4.00	3.85	4.00	1.95	1.65	1.95
Mar	12.30	3.31	4.15	3.30	1.25	1.95	1.25
FL							
Valencias							
Mar 2002	15.20	6.25	7.60	6.19	4.15	5.45	4.09
Apr	14.00	6.27	6.40	6.27	4.17	4.25	4.17
May	14.80	6.34	7.20	6.32	4.24	5.05	4.22
Jun	16.10	6.34	8.50	6.26	4.24	6.35	4.16
Feb 2003	15.00	5.02	7.40	4.80	2.82	5.20	2.60
Mar	15.10	6.09	7.50	6.04	3.89	5.30	3.84
Apr	13.50	6.07	5.90	6.07	3.87	3.70	3.87
May	13.50	6.05	5.90	6.05	3.85	3.70	3.85
Jun	20.00	6.29	12.40	5.94	4.09	10.20	3.74
Feb 2004	13.30	5.45	5.15	5.50	3.29	2.95	3.35
Mar	13.00	4.80	4.85	4.80	2.65	2.65	2.65
Apr	12.70	5.23	4.55	5.25	3.08	2.35	3.10
May	12.60	5.18	4.45	5.20	3.03	2.25	3.05
Jun	14.90	5.40	6.75	5.30	3.25	4.55	3.15

**Oranges: Average Prices and Equivalent Returns, Texas
October 2001 - May 2004**

State, Month, and Year	F.O.B. Packed	Equiv. P.H.D.			Equiv. On-Tree		
		All	Fresh	Proc.	All	Fresh	Proc.
TX							
All Oranges							
	<i>Dollars per box</i>	<i>Dollars per box</i>	<i>Dollars per box</i>	<i>Dollars per box</i>	<i>Dollars per box</i>	<i>Dollars per box</i>	<i>Dollars per box</i>
Oct	19.60	8.62	9.90	2.55	7.33	8.60	1.30
Nov	15.80	5.51	6.10	2.55	4.21	4.80	1.30
Dec	14.20	4.04	4.50	2.55	2.75	3.20	1.30
Jan 2002	13.00	3.13	3.30	2.55	1.84	2.00	1.30
Feb	13.70	3.77	4.02	2.55	2.48	2.72	1.30
Mar	15.60	5.28	5.93	2.55	3.99	4.63	1.30
Apr	16.10	5.63	6.40	2.55	4.34	5.10	1.30
May	15.00	4.71	5.25	2.55	3.42	3.95	1.30
Oct	18.90	7.90	9.01	2.98	6.58	7.68	1.70
Nov	16.90	6.19	7.01	2.98	4.87	5.68	1.70
Dec	13.10	3.13	3.21	2.98	1.82	1.88	1.70
Jan 2003	11.80	2.32	1.91	2.98	1.01	0.58	1.70
Feb	12.90	3.00	3.01	2.98	1.69	1.68	1.70
Mar	13.30	3.34	3.41	2.98	2.02	2.08	1.70
Apr	19.40	7.67	9.51	2.98	6.35	8.18	1.70
May	20.00	9.65	10.11	2.98	8.32	8.78	1.70
Oct	23.80	12.47	13.71	2.55	11.13	12.36	1.25
Nov	16.50	5.70	6.41	2.55	4.36	5.06	1.25
Dec	15.00	4.18	4.91	2.55	2.84	3.56	1.25
Jan 2004	13.30	2.95	3.21	2.55	1.62	1.86	1.25
Feb	12.70	2.59	2.60	2.55	1.25	1.25	1.25
Mar	13.80	3.46	3.73	2.55	2.12	2.38	1.25
Apr	15.90	5.43	5.81	2.55	4.09	4.46	1.25
May	15.90	5.10	5.81	2.55	3.76	4.46	1.25

**Oranges: Average Prices and Equivalent Returns, Texas
October 2001 - May 2004**

State, Month, and Year	F.O.B. Packed	Equiv. P.H.D.			Equiv. On-Tree		
		All	Fresh	Proc.	All	Fresh	Proc.
TX							
Early and Midseason							
	<i>Dollars per box</i>	<i>Dollars per box</i>	<i>Dollars per box</i>	<i>Dollars per box</i>	<i>Dollars per box</i>	<i>Dollars per box</i>	<i>Dollars per box</i>
Oct	19.60	8.62	9.90	2.55	7.33	8.60	1.30
Nov	15.80	5.51	6.10	2.55	4.21	4.80	1.30
Dec	14.20	4.04	4.50	2.55	2.75	3.20	1.30
Jan 2002	13.00	3.13	3.30	2.55	1.84	2.00	1.30
Feb	13.60	3.68	3.90	2.55	2.39	2.60	1.30
Mar	13.80	3.84	4.10	2.55	2.55	2.80	1.30
Apr							
May	13.80	4.00	4.10	2.55	2.70	2.80	1.30
Oct	18.90	7.90	9.01	2.98	6.58	7.68	1.70
Nov	16.90	6.19	7.01	2.98	4.87	5.68	1.70
Dec	13.10	3.13	3.21	2.98	1.82	1.88	1.70
Jan 2003	11.80	2.32	1.91	2.98	1.01	0.58	1.70
Feb	12.90	3.00	3.01	2.98	1.69	1.68	1.70
Mar	13.30	3.34	3.41	2.98	2.02	2.08	1.70
Oct	23.80	12.47	13.71	2.55	11.13	12.36	1.25
Nov	16.50	5.70	6.41	2.55	4.36	5.06	1.25
Dec	15.00	4.18	4.91	2.55	2.84	3.56	1.25
Jan 2004	13.30	2.95	3.21	2.55	1.62	1.86	1.25
Feb	12.60	2.52	2.51	2.55	1.19	1.16	1.25
Mar	12.20	2.12	2.11	2.55	0.77	0.76	1.25
TX							
Valencias							
Feb 2002	15.90	5.29	6.20	2.55	4.00	4.90	1.30
Mar	15.90	5.49	6.20	2.55	4.20	4.90	1.30
Apr	16.10	5.63	6.40	2.55	4.34	5.10	1.30
May	16.10	5.25	6.40	2.55	3.96	5.10	1.30
Feb 2003	13.30	3.01	3.41	2.98	1.73	2.08	1.70
Mar	13.30	3.34	3.41	2.98	2.02	2.08	1.70
Apr	19.40	7.67	9.51	2.98	6.35	8.18	1.70
May	20.00	9.65	10.11	2.98	8.32	8.78	1.70
Feb 2004	15.50	3.98	5.41	2.55	2.66	4.06	1.25
Mar	15.50	4.36	5.41	2.55	3.03	4.06	1.25
Apr	15.90	5.43	5.81	2.55	4.09	4.46	1.25
May	15.90	5.10	5.81	2.55	3.76	4.46	1.25

**Grapefruit: Average Prices and Equivalent Returns, United States
September 2001 - August 2004**

State, Month, and Year	F.O.B. Packed	Equiv. P.H.D.			Equiv. On-Tree		
		All	Fresh	Proc.	All	Fresh	Proc.
US							
	All Grapefruit						
	<i>Dollars per box</i>	<i>Dollars per box</i>	<i>Dollars per box</i>	<i>Dollars per box</i>	<i>Dollars per box</i>	<i>Dollars per box</i>	<i>Dollars per box</i>
Sep	16.30	9.06	10.17	-0.24	6.88	7.99	-2.42
Oct	18.80	9.09	10.66	2.86	6.93	8.63	0.20
Nov	16.50	6.24	7.96	2.95	4.06	5.98	0.37
Dec	15.60	5.35	7.14	2.73	3.13	5.17	0.14
Jan 2002	15.40	5.04	6.92	2.89	2.83	4.95	0.42
Feb	15.10	4.44	6.66	3.11	2.14	4.65	0.62
Mar	15.10	4.17	6.80	3.10	1.81	4.73	0.62
Apr	14.60	3.97	6.34	2.88	1.65	4.28	0.44
May	14.50	4.10	6.74	2.54	1.87	4.68	0.21
Jun	16.00	7.71	9.60	0.10	5.62	7.43	-1.65
Jul	16.30	8.50	10.05	-0.25	6.28	7.83	-2.47
Aug	16.00	7.50	9.75	-0.25	5.28	7.53	-2.47
Sep	14.60	7.45	8.35	-0.25	5.23	6.13	-2.47
Oct	15.00	6.65	8.04	2.54	4.69	6.28	-0.09
Nov	15.80	5.70	7.54	2.08	3.69	5.70	-0.25
Dec	15.00	4.79	6.91	2.40	2.64	5.01	-0.04
Jan 2003	15.00	4.58	6.93	2.44	2.43	5.05	0.04
Feb	15.20	4.21	7.00	2.40	2.00	5.10	-0.02
Mar	15.30	3.90	7.05	2.46	1.65	5.18	0.04
Apr	15.70	4.09	8.01	2.42	1.84	6.04	0.05
May	19.10	8.22	12.26	2.03	5.96	10.13	-0.41
Jun	22.00	13.47	15.62	-0.26	11.21	13.36	-2.52
Jul	19.50	11.09	13.12	-0.26	8.83	10.86	-2.52
Aug	18.40	9.29	12.02	-0.26	7.03	9.76	-2.52
Sep	24.50	16.11	18.12	-0.26	13.85	15.86	-2.52
Oct	21.20	12.44	14.82	-0.26	10.18	12.56	-2.52
Nov	16.60	6.16	8.75	1.28	4.16	6.91	-1.00
Dec	16.10	5.55	8.13	1.58	3.57	6.32	-0.66
Jan 2004	16.00	5.02	8.03	1.88	2.99	6.20	-0.37
Feb	16.30	4.87	8.41	2.17	2.80	6.59	-0.08
Mar	17.20	4.50	9.38	2.26	2.38	7.52	0.03
Apr	16.80	4.20	8.99	2.47	2.11	7.14	0.30
May	18.10	6.00	11.02	2.33	3.85	8.93	0.14
Jun	20.00	11.73	13.50	-0.27	9.43	11.20	-2.57
Jul	19.40	10.99	12.90	-0.27	8.69	10.60	-2.57
Aug	19.60	10.21	13.10	-0.27	7.91	10.80	-2.57

**Grapefruit: Average Prices and Equivalent Returns, Arizona
November 2001 - May 2004**

State, Month, and Year	Equiv. P.H.D.			Equiv. On-Tree			
	F.O.B. Packed	All	Fresh	Proc.	All	Fresh	Proc.
AZ	All Grapefruit						
	<i>Dollars per box</i>	<i>Dollars per box</i>	<i>Dollars per box</i>	<i>Dollars per box</i>	<i>Dollars per box</i>	<i>Dollars per box</i>	<i>Dollars per box</i>
Nov	13.10	6.86	6.85		4.61	4.62	
Dec	14.10	7.85	7.85		5.62	5.62	
Jan 2002	13.80	6.84	7.55	-0.25	4.61	5.32	-2.48
Feb	12.50	6.25	6.25		4.02	4.02	
Mar	12.10	5.86	5.85		3.62	3.62	
Apr	12.70	3.57	6.45	-0.25	1.36	4.22	-2.48
May	14.00	7.47	7.75	-0.25	5.24	5.52	-2.48
Jun	12.10	5.85	5.85		3.62	3.62	
Nov	13.60	7.22	7.22		4.95	4.95	
Dec	13.70	7.32	7.32		5.05	5.05	
Jan 2003	12.70	6.32	6.32		4.06	4.05	
Feb	13.30	6.93	6.92		4.67	4.65	
Mar	12.90	6.53	6.52		4.27	4.25	
Apr	14.90	8.52	8.52		6.25	6.25	
May	15.30	7.86	8.92	-0.26	5.59	6.65	-2.53
Oct	19.50	12.99	12.99		10.67	10.67	
Nov	14.20	7.69	7.69		5.37	5.37	
Dec	15.20	8.69	8.69		6.37	6.37	
Jan 2004	16.00	9.49	9.49		7.17	7.17	
Feb	15.30	8.79	8.79		6.47	6.47	
Mar	14.80	8.29	8.29		5.97	5.97	
Apr	15.40	8.89	8.89		6.57	6.57	
May	17.10	10.59	10.59		8.27	8.27	

**Grapefruit: Average Prices and Equivalent Returns, California
September 2001 - August 2004**

State, Month, and Year	F.O.B. Packed	Equiv. P.H.D.			Equiv. On-Tree		
		All	Fresh	Proc.	All	Fresh	Proc.
CA							
	All Grapefruit						
	<i>Dollars per box</i>	<i>Dollars per box</i>	<i>Dollars per box</i>	<i>Dollars per box</i>	<i>Dollars per box</i>	<i>Dollars per box</i>	<i>Dollars per box</i>
Sep	16.30	9.06	10.17	-0.24	6.88	7.99	-2.42
Oct	15.80	8.13	9.67	-0.24	5.95	7.49	-2.42
Nov	17.00	9.08	10.75	-0.25	6.86	8.53	-2.47
Dec	17.30	10.34	11.05	-0.25	8.12	8.83	-2.47
Jan 2002	17.00	9.65	10.75	-0.25	7.43	8.53	-2.47
Feb	16.40	9.65	10.15	-0.25	7.43	7.93	-2.47
Mar	12.20	5.78	5.95	-0.25	3.56	3.73	-2.47
Apr	13.30	6.81	7.05	-0.25	4.59	4.83	-2.47
May	15.60	8.23	9.35	-0.25	6.01	7.13	-2.47
Jun	16.20	8.57	9.95	-0.25	6.35	7.73	-2.47
Jul	16.30	8.50	10.05	-0.25	6.28	7.83	-2.47
Aug	16.00	7.50	9.75	-0.25	5.28	7.53	-2.47
Sep	14.60	7.45	8.35	-0.25	5.23	6.13	-2.47
Oct	15.10	7.48	8.85	-0.25	5.26	6.63	-2.47
Nov	20.90	12.21	14.52	-0.26	9.95	12.26	-2.52
Dec	20.80	13.37	14.42	-0.26	11.11	12.16	-2.52
Jan 2003	18.20	10.69	11.82	-0.26	8.43	9.56	-2.52
Feb	16.80	9.89	10.42	-0.26	7.63	8.16	-2.52
Mar	14.00	7.34	7.62	-0.26	5.08	5.36	-2.52
Apr	16.90	10.19	10.52	-0.26	7.93	8.26	-2.52
May	20.30	12.25	13.92	-0.26	9.99	11.66	-2.52
Jun	22.00	13.47	15.62	-0.26	11.21	13.36	-2.52
Jul	19.50	11.09	13.12	-0.26	8.83	10.86	-2.52
Aug	18.40	9.29	12.02	-0.26	7.03	9.76	-2.52
Sep	24.50	16.11	18.12	-0.26	13.85	15.86	-2.52
Oct	21.20	12.44	14.82	-0.26	10.18	12.56	-2.52
Nov	20.20	11.52	13.70	-0.27	9.22	11.40	-2.57
Dec	18.80	11.37	12.30	-0.27	9.07	10.00	-2.57
Jan 2004	19.00	11.50	12.50	-0.27	9.20	10.20	-2.57
Feb	17.60	10.53	11.10	-0.27	8.23	8.80	-2.57
Mar	14.50	7.41	8.00	-0.27	5.11	5.70	-2.57
Apr	16.80	9.99	10.30	-0.27	7.69	8.00	-2.57
May	19.90	11.92	13.40	-0.27	9.62	11.10	-2.57
Jun	20.00	11.73	13.50	-0.27	9.43	11.20	-2.57
Jul	19.40	10.99	12.90	-0.27	8.69	10.60	-2.57
Aug	19.60	10.21	13.10	-0.27	7.91	10.80	-2.57

**Grapefruit: Average Prices and Equivalent Returns, Florida
October 2001 - May 2004**

State, Month, and Year	F.O.B. Packed	Equiv. P.H.D.			Equiv. On-Tree		
		All	Fresh	Proc.	All	Fresh	Proc.
FL	All Grapefruit						
	<i>Dollars per box</i>	<i>Dollars per box</i>	<i>Dollars per box</i>	<i>Dollars per box</i>	<i>Dollars per box</i>	<i>Dollars per box</i>	<i>Dollars per box</i>
Oct	18.60	8.76	10.50	3.14	6.46	8.32	0.42
Nov	16.30	5.99	7.96	3.03	3.64	5.78	0.43
Dec	15.40	5.06	7.14	2.76	2.69	4.96	0.16
Jan 2002	15.60	5.16	7.33	3.13	2.76	5.15	0.52
Feb	15.30	4.54	7.04	3.26	2.10	4.86	0.69
Mar	15.60	4.29	7.35	3.19	1.85	5.16	0.66
Apr	14.90	4.05	6.60	3.05	1.61	4.42	0.51
May	14.00	3.81	5.91	2.95	1.37	3.73	0.40
Oct	17.00	7.44	9.12	2.68	5.27	7.12	0.03
Nov	15.40	5.72	7.49	2.43	3.50	5.49	-0.19
Dec	14.90	4.80	7.01	2.57	2.51	5.01	0.00
Jan 2003	15.00	4.56	7.09	2.63	2.26	5.09	0.10
Feb	15.40	4.37	7.45	2.54	2.03	5.45	0.01
Mar	15.60	4.01	7.63	2.59	1.64	5.63	0.07
Apr	15.20	3.57	7.26	2.60	1.17	5.26	0.10
May	15.70	3.53	7.78	2.54	1.10	5.78	0.01
Oct	19.10	8.60	11.52	1.30	6.53	9.58	-1.08
Nov	16.40	5.99	8.83	1.34	3.89	6.89	-1.03
Dec	16.00	5.51	8.43	1.67	3.39	6.49	-0.69
Jan 2004	16.10	5.02	8.51	1.98	2.87	6.57	-0.36
Feb	16.60	5.00	9.06	2.26	2.84	7.13	-0.06
Mar	17.50	4.62	9.94	2.36	2.42	8.00	0.05
Apr	17.10	4.14	9.56	2.65	1.90	7.62	0.33
May	16.20	4.35	8.67	2.66	2.11	6.72	0.30

**Grapefruit: Average Prices and Equivalent Returns, Florida
November 2001 - May 2004**

State, Month, and Year	F.O.B. Packed	Equiv. P.H.D.			Equiv. On-Tree		
		All	Fresh	Proc.	All	Fresh	Proc.
FL							
White Seedless							
	<i>Dollars per box</i>	<i>Dollars per box</i>	<i>Dollars per box</i>	<i>Dollars per box</i>	<i>Dollars per box</i>	<i>Dollars per box</i>	<i>Dollars per box</i>
Nov	18.80	6.66	9.93	3.20	4.36	7.74	0.79
Dec	16.90	5.11	8.03	3.39	2.78	5.84	0.98
Jan 2002	17.40	5.17	8.53	3.38	2.83	6.34	0.97
Feb	17.40	4.41	8.53	3.42	2.05	6.34	1.01
Mar	17.80	4.10	8.93	3.37	1.71	6.74	0.96
Apr	17.00	3.82	8.13	3.23	1.44	5.94	0.82
May	15.10	3.18	6.23	3.10	0.78	4.04	0.69
Oct	18.80	7.82	10.67	2.57	5.69	8.67	0.20
Nov	18.10	6.18	9.97	2.25	4.00	7.97	-0.12
Dec	17.80	4.52	9.67	2.49	2.26	7.67	0.12
Jan 2003	18.00	4.20	9.87	2.59	1.91	7.87	0.22
Feb	17.80	3.96	9.67	2.52	1.66	7.67	0.15
Mar	16.70	3.30	8.57	2.48	0.98	6.57	0.11
Apr	16.70	2.88	8.57	2.54	0.53	6.57	0.17
May	16.80	2.83	8.67	2.49	0.48	6.67	0.12
Oct	19.60	7.84	12.00	1.16	5.81	10.10	-1.09
Nov	16.90	5.19	9.30	1.31	3.11	7.40	-0.94
Dec	16.50	4.63	8.90	1.61	2.52	7.00	-0.64
Jan 2004	16.40	4.14	8.80	1.96	2.01	6.90	-0.29
Feb	16.50	3.73	8.90	2.16	1.57	7.00	-0.09
Mar	17.60	3.14	10.00	2.21	0.93	8.10	-0.04
Apr	17.60	2.83	10.00	2.51	0.59	8.10	0.26
May	15.20	2.74	7.60	2.51	0.51	5.70	0.26

**Grapefruit: Average Prices and Equivalent Returns, Florida
October 2001 - May 2004**

State, Month, and Year	F.O.B. Packed	Equiv. P.H.D.			Equiv. On-Tree		
		All	Fresh	Proc.	All	Fresh	Proc.
FL							
Colored Seedless							
	<i>Dollars per box</i>	<i>Dollars per box</i>	<i>Dollars per box</i>	<i>Dollars per box</i>	<i>Dollars per box</i>	<i>Dollars per box</i>	<i>Dollars per box</i>
Oct	18.60	8.76	10.50	3.14	6.46	8.32	0.42
Nov	15.30	5.66	7.20	2.92	3.29	5.02	0.20
Dec	15.00	5.05	6.90	2.34	2.65	4.72	-0.38
Jan 2002	15.10	5.16	7.00	2.97	2.73	4.82	0.25
Feb	14.70	4.62	6.60	3.12	2.13	4.42	0.40
Mar	14.90	4.50	6.80	2.90	2.00	4.62	0.18
Apr	14.30	4.26	6.20	2.79	1.77	4.02	0.07
May	14.00	4.23	5.90	2.77	1.76	3.72	0.05
Oct	16.70	7.36	8.83	2.72	5.17	6.83	-0.03
Nov	14.80	5.58	6.93	2.52	3.35	4.93	-0.23
Dec	14.30	4.93	6.43	2.64	2.63	4.43	-0.11
Jan 2003	14.20	4.83	6.33	2.68	2.52	4.33	-0.07
Feb	14.60	4.71	6.73	2.56	2.35	4.73	-0.19
Mar	15.20	4.72	7.33	2.76	2.29	5.33	0.01
Apr	14.90	4.42	7.03	2.71	1.96	5.03	-0.04
May	15.50	4.20	7.63	2.61	1.68	5.63	-0.14
Oct	19.00	8.78	11.42	1.35	6.71	9.47	-1.07
Nov	16.30	6.24	8.72	1.35	4.13	6.77	-1.07
Dec	15.90	5.82	8.32	1.70	3.69	6.37	-0.72
Jan 2004	16.00	5.47	8.42	2.00	3.30	6.47	-0.42
Feb	16.70	6.04	9.12	2.40	3.88	7.17	-0.02
Mar	17.50	5.99	9.92	2.60	3.79	7.97	0.18
Apr	17.10	5.32	9.52	2.85	3.08	7.57	0.43
May	16.30	5.01	8.72	2.75	2.77	6.77	0.33

**Grapefruit: Average Prices and Equivalent Returns, Texas
October 2001 - May 2004**

State, Month, and Year	F.O.B. Packed	Equiv. P.H.D.			Equiv. On-Tree		
		All	Fresh	Proc.	All	Fresh	Proc.
TX	All Grapefruit						
	<i>Dollars per box</i>	<i>Dollars per box</i>	<i>Dollars per box</i>	<i>Dollars per box</i>	<i>Dollars per box</i>	<i>Dollars per box</i>	<i>Dollars per box</i>
Oct	21.80	12.04	12.20	0.60	10.89	11.05	-0.50
Nov	17.00	7.13	7.40	0.60	5.98	6.25	-0.50
Dec	15.90	6.14	6.30	0.60	4.99	5.15	-0.50
Jan 2002	14.20	3.52	4.60	0.60	2.38	3.45	-0.50
Feb	14.00	3.09	4.40	0.60	1.95	3.25	-0.50
Mar	12.50	1.88	2.90	0.60	0.75	1.75	-0.50
Apr	13.80	2.25	4.20	0.60	1.13	3.05	-0.50
May	14.20	1.96	4.60	0.60	0.84	3.45	-0.50
Jun	14.20	1.69	4.60	0.60	0.57	3.45	-0.50
Oct	21.30	9.54	11.51	0.80	8.38	10.34	-0.32
Nov	16.20	4.59	6.41	0.80	3.44	5.24	-0.32
Dec	13.90	2.92	4.11	0.80	1.77	2.94	-0.32
Jan 2003	13.80	2.79	4.01	0.80	1.64	2.84	-0.32
Feb	13.40	2.31	3.61	0.80	1.16	2.44	-0.32
Mar	13.90	2.49	4.11	0.80	1.35	2.94	-0.32
Apr	15.30	2.61	5.51	0.80	1.47	4.34	-0.32
May	15.50	4.68	5.71	0.80	3.52	4.54	-0.32
Oct	21.80	9.71	11.81	0.80	8.55	10.64	-0.32
Nov	17.10	5.90	7.11	0.80	4.74	5.94	-0.32
Dec	16.10	4.81	6.11	0.80	3.66	4.94	-0.32
Jan 2004	14.60	3.53	4.61	0.80	2.37	3.44	-0.32
Feb	14.30	3.04	4.31	0.80	1.89	3.14	-0.32
Mar	15.30	2.89	5.31	0.80	1.75	4.14	-0.32
Apr	16.00	2.95	6.01	1.20	1.81	4.84	0.08
May	17.80	2.52	7.81	1.20	1.39	6.64	0.08

**Lemons: Average Prices and Equivalent Returns, United States
August 2001 - July 2004**

State, Month, and Year	F.O.B. Packed	Equiv. P.H.D.			Equiv. On-Tree		
		All	Fresh	Proc.	All	Fresh	Proc.
US							
	All Lemons						
	<i>Dollars per box</i>	<i>Dollars per box</i>	<i>Dollars per box</i>	<i>Dollars per box</i>	<i>Dollars per box</i>	<i>Dollars per box</i>	<i>Dollars per box</i>
Aug	40.20	22.64	30.51	0.30	18.46	26.33	-3.88
Sep	36.90	19.61	27.22	0.30	15.43	23.04	-3.88
Oct	38.20	23.33	28.47	0.30	19.15	24.29	-3.88
Nov	33.90	19.13	24.21	0.24	14.95	20.03	-3.94
Dec	30.50	13.52	20.85	0.24	9.34	16.67	-3.94
Jan 2002	28.40	11.09	18.72	0.24	6.91	14.54	-3.94
Feb	26.50	8.78	16.79	0.24	4.60	12.61	-3.94
Mar	25.70	10.06	15.97	0.24	5.88	11.79	-3.94
Apr	28.10	12.65	18.41	0.24	8.47	14.23	-3.94
May	31.00	14.76	21.31	0.24	10.58	17.13	-3.94
Jun	35.90	19.68	26.21	0.24	15.50	22.03	-3.94
Jul	37.00	21.90	27.31	0.24	17.72	23.13	-3.94
Aug	39.50	24.54	29.62	0.22	20.28	25.36	-4.04
Sep	39.10	22.69	29.18	0.22	18.43	24.92	-4.04
Oct	36.40	19.45	26.47	0.22	15.19	22.21	-4.04
Nov	31.90	13.69	22.04	0.22	9.43	17.78	-4.04
Dec	26.90	10.28	17.00	0.22	6.02	12.74	-4.04
Jan 2003	24.00	7.61	14.12	0.22	3.35	9.86	-4.04
Feb	19.70	4.95	9.82	0.22	0.69	5.56	-4.04
Mar	19.70	4.73	9.77	0.22	0.47	5.51	-4.04
Apr	26.20	8.86	16.30	0.22	4.60	12.04	-4.04
May	30.50	9.72	20.62	0.22	5.46	16.36	-4.04
Jun	32.40	10.03	22.52	0.22	5.77	18.26	-4.04
Jul	32.80	10.50	22.92	0.22	6.24	18.66	-4.04
Aug	32.30	17.21	22.42	0.22	12.95	18.16	-4.04
Sep	28.50	14.99	18.55	0.22	10.72	14.27	-4.04
Oct	25.60	12.65	15.60	0.22	8.36	11.31	-4.04
Nov	24.80	9.86	14.86	0.21	5.56	10.56	-4.08
Dec	23.60	8.12	13.61	0.21	3.83	9.32	-4.08
Jan 2004	22.80	6.93	12.81	0.21	2.64	8.52	-4.08
Feb	24.30	8.18	14.41	0.22	3.91	10.14	-4.06
Mar	28.40	11.63	18.52	0.22	7.37	14.26	-4.04
Apr	31.00	13.95	21.12	0.22	9.69	16.86	-4.04
May	31.70	16.63	21.82	0.22	12.37	17.56	-4.04
Jun	34.10	19.11	24.22	0.22	14.85	19.96	-4.04
Jul	35.60	18.87	25.72	0.22	14.61	21.46	-4.04

**Lemons: Average Prices and Equivalent Returns, Arizona
September 2001 - February 2004**

State, Month, and Year	Equiv. P.H.D.			Equiv. On-Tree			
	F.O.B. Packed	All	Fresh	Proc.	All	Fresh	Proc.
AZ	All Lemons						
	<i>Dollars per box</i>	<i>Dollars per box</i>	<i>Dollars per box</i>	<i>Dollars per box</i>	<i>Dollars per box</i>	<i>Dollars per box</i>	<i>Dollars per box</i>
Sep	40.50	30.81	30.81		26.63	26.63	
Oct	40.10	28.48	30.41	0.24	24.30	26.23	-3.94
Nov	33.20	18.35	23.51	0.24	14.17	19.33	-3.94
Dec	30.00	13.21	20.31	0.24	9.03	16.13	-3.94
Jan 2002	28.80	11.97	19.11	0.24	7.79	14.93	-3.94
Feb	26.10	9.60	16.41	0.24	5.42	12.23	-3.94
Mar	24.00	6.60	14.31	0.24	2.41	10.13	-3.94
Sep	37.50	23.44	27.60	0.22	19.18	23.34	-4.04
Oct	37.40	20.94	27.50	0.22	16.68	23.24	-4.04
Nov	32.40	12.80	22.50	0.22	8.54	18.24	-4.04
Dec	26.60	8.99	16.70	0.22	4.73	12.44	-4.04
Jan 2003	23.70	7.02	13.80	0.22	2.76	9.54	-4.04
Feb	19.20	3.29	9.30	0.22	-0.97	5.04	-4.04
Mar	18.60	2.51	8.70	0.22	-1.75	4.44	-4.04
Apr	19.80	2.50	9.90	0.22	-1.76	5.64	-4.04
Sep	28.80	18.70	18.70		14.35	14.35	
Oct	26.70	16.60	16.60		12.25	12.25	
Nov	24.60	9.84	14.50	0.20	5.49	10.15	-4.15
Dec	23.10	8.41	13.00	0.20	4.06	8.65	-4.15
Jan 2004	22.90	7.06	12.80	0.20	2.71	8.45	-4.15
Feb	22.60	5.61	12.50	0.20	1.26	8.15	-4.15

**Lemons: Average Prices and Equivalent Returns, California
August 2001 - July 2004**

State, Month, and Year	F.O.B. Packed	Equiv. P.H.D.			Equiv. On-Tree		
		All	Fresh	Proc.	All	Fresh	Proc.
CA							
	All Lemons						
	<i>Dollars per box</i>	<i>Dollars per box</i>	<i>Dollars per box</i>	<i>Dollars per box</i>	<i>Dollars per box</i>	<i>Dollars per box</i>	<i>Dollars per box</i>
Aug	40.20	22.64	30.51	0.30	18.46	26.33	-3.88
Sep	36.80	19.37	27.11	0.30	15.19	22.93	-3.88
Oct	37.60	22.08	27.91	0.30	17.90	23.73	-3.88
Nov	34.40	19.70	24.71	0.24	15.52	20.53	-3.94
Dec	30.90	13.72	21.21	0.24	9.54	17.03	-3.94
Jan 2002	28.20	10.64	18.51	0.24	6.46	14.33	-3.94
Feb	26.60	8.58	16.91	0.24	4.40	12.73	-3.94
Mar	25.70	10.16	16.01	0.24	5.98	11.83	-3.94
Apr	28.10	12.65	18.41	0.24	8.47	14.23	-3.94
May	31.00	14.76	21.31	0.24	10.58	17.13	-3.94
Jun	35.90	19.68	26.21	0.24	15.50	22.03	-3.94
Jul	37.00	21.90	27.31	0.24	17.72	23.13	-3.94
Aug	39.50	24.54	29.62	0.22	20.28	25.36	-4.04
Sep	39.20	22.63	29.32	0.22	18.37	25.06	-4.04
Oct	36.00	18.98	26.12	0.22	14.72	21.86	-4.04
Nov	31.70	14.17	21.82	0.22	9.91	17.56	-4.04
Dec	27.00	10.89	17.12	0.22	6.63	12.86	-4.04
Jan 2003	24.10	7.81	14.22	0.22	3.55	9.96	-4.04
Feb	19.80	5.46	9.92	0.22	1.20	5.66	-4.04
Mar	19.70	4.91	9.82	0.22	0.65	5.56	-4.04
Apr	26.20	8.89	16.32	0.22	4.63	12.06	-4.04
May	30.50	9.72	20.62	0.22	5.46	16.36	-4.04
Jun	32.40	10.03	22.52	0.22	5.77	18.26	-4.04
Jul	32.80	10.50	22.92	0.22	6.24	18.66	-4.04
Aug	32.30	17.21	22.42	0.22	12.95	18.16	-4.04
Sep	28.40	14.43	18.52	0.22	10.17	14.26	-4.04
Oct	24.90	10.97	15.02	0.22	6.71	10.76	-4.04
Nov	25.00	9.87	15.12	0.22	5.61	10.86	-4.04
Dec	23.90	7.96	14.02	0.22	3.70	9.76	-4.04
Jan 2004	22.70	6.86	12.82	0.22	2.60	8.56	-4.04
Feb	24.60	8.73	14.72	0.22	4.47	10.46	-4.04
Mar	28.40	11.63	18.52	0.22	7.37	14.26	-4.04
Apr	31.00	13.95	21.12	0.22	9.69	16.86	-4.04
May	31.70	16.63	21.82	0.22	12.37	17.56	-4.04
Jun	34.10	19.11	24.22	0.22	14.85	19.96	-4.04
Jul	35.60	18.87	25.72	0.22	14.61	21.46	-4.04

**Tangerines: Average Prices and Equivalent Returns, United States
and Arizona, October 2001 - May 2004**

State, Month, and Year	F.O.B. Packed	Equiv. P.H.D.			Equiv. On-Tree		
		All	Fresh	Proc.	All	Fresh	Proc.
US							
	Tangerines						
	<i>Dollars per box</i>	<i>Dollars per box</i>	<i>Dollars per box</i>	<i>Dollars per box</i>	<i>Dollars per box</i>	<i>Dollars per box</i>	<i>Dollars per box</i>
Oct	23.70	12.02	14.59	3.38	8.42	11.12	-0.70
Nov	25.70	12.03	16.84	3.29	8.43	13.48	-0.73
Dec	23.50	11.38	14.88	3.32	7.91	11.66	-0.74
Jan 2002	27.90	14.45	19.71	3.16	11.13	16.68	-0.78
Feb	24.80	13.08	16.70	3.73	9.86	13.72	-0.11
Mar	25.40	13.36	17.30	3.70	10.12	14.30	-0.12
Apr	27.90	16.69	20.22	3.44	13.70	17.42	-0.25
May	26.90	20.16	20.16		17.77	17.77	
Oct	24.00	11.93	14.52	2.81	8.54	11.37	-1.44
Nov	27.10	13.90	17.95	3.23	10.53	14.89	-0.94
Dec	25.90	13.63	17.29	4.25	10.37	14.36	0.14
Jan 2003	26.60	15.03	18.17	2.42	11.97	15.31	-1.46
Feb	22.70	11.86	14.49	2.85	8.84	11.67	-0.90
Mar	22.90	12.11	14.85	2.47	9.16	12.08	-1.12
Apr	24.40	12.63	15.94	2.55	9.54	13.05	-1.16
May	26.30	15.61	17.85	2.69	12.60	14.97	-1.09
Oct	22.50	9.28	12.75	2.13	5.69	9.50	-2.17
Nov	25.10	11.01	15.73	2.50	7.47	12.59	-1.76
Dec	25.20	12.03	16.08	2.63	8.63	13.00	-1.53
Jan 2004	27.30	14.60	18.76	2.32	11.46	15.85	-1.47
Feb	23.00	11.47	14.69	2.09	8.47	11.85	-1.40
Mar	23.80	12.69	15.53	2.52	9.69	12.72	-1.15
Apr	26.80	14.99	18.07	3.11	11.80	15.11	-0.93
May	36.30	23.97	26.55	5.60	20.59	23.30	1.30
AZ							
	Tangerines						
Nov	23.80	17.02	17.02		14.63	14.63	
Dec	29.40	21.49	22.62	0.74	19.10	20.23	-1.65
Jan 2002	29.30	20.21	22.52	0.74	17.82	20.13	-1.65
Feb	19.00	11.11	12.22	0.74	8.72	9.83	-1.65
Mar	16.00	9.13	9.22	0.74	6.74	6.83	-1.65
Apr	10.40	3.19	3.62	0.74	0.80	1.23	-1.65
May	5.60	-1.18	-1.18		-3.57	-3.57	
Nov	28.00	21.08	21.08		18.64	18.64	
Dec	28.40	19.90	21.48	0.34	17.46	19.04	-2.10
Jan 2003	28.90	18.59	21.98	0.34	16.15	19.54	-2.10
Feb	25.60	16.45	18.68	0.34	14.01	16.24	-2.10
Mar	20.60	11.90	13.68	0.34	9.46	11.24	-2.10
Apr	24.60	17.68	17.68		15.24	15.24	
Nov	28.60	21.54	21.54		19.05	19.05	
Dec	27.40	17.19	20.34	0.32	14.70	17.85	-2.17
Jan 2004	26.80	14.22	19.74	0.32	11.73	17.25	-2.17
Feb	21.80	8.34	14.74	0.32	5.85	12.25	-2.17
Mar	20.70	9.54	13.64	0.32	7.05	11.15	-2.17

**Tangerines: Average Prices and Equivalent Returns, California
and Florida, October 2001 - May 2004**

State, Month, and Year	F.O.B. Packed	Equiv. P.H.D.			Equiv. On-Tree		
		All	Fresh	Proc.	All	Fresh	Proc.
CA							
	Tangerines						
	<i>Dollars per box</i>	<i>Dollars per box</i>	<i>Dollars per box</i>	<i>Dollars per box</i>	<i>Dollars per box</i>	<i>Dollars per box</i>	<i>Dollars per box</i>
Oct	40.60	30.51	33.82	0.74	28.12	31.43	-1.65
Nov	28.30	17.87	21.52	0.74	15.48	19.13	-1.65
Dec	23.30	15.98	16.52	0.74	13.59	14.13	-1.65
Jan 2002	27.60	19.02	20.82	0.74	16.63	18.43	-1.65
Feb	26.80	17.68	20.02	0.74	15.29	17.63	-1.65
Mar	25.30	15.80	18.52	0.74	13.41	16.13	-1.65
Apr	26.50	18.07	19.72	0.74	15.68	17.33	-1.65
May	27.70	20.92	20.92		18.53	18.53	
Oct	36.80	29.88	29.88		27.44	27.44	
Nov	30.70	21.86	23.78	0.72	19.42	21.34	-1.72
Dec	26.30	17.93	19.38	0.72	15.49	16.94	-1.72
Jan 2003	24.90	16.66	17.98	0.72	14.22	15.54	-1.72
Feb	22.40	13.38	15.48	0.34	10.94	13.04	-2.10
Mar	22.70	13.40	15.78	0.34	10.96	13.34	-2.10
Apr	25.40	14.89	18.48	0.34	12.45	16.04	-2.10
May	24.30	15.76	17.38	0.34	13.32	14.94	-2.10
Oct	42.80	35.88	35.88		33.44	33.44	
Nov	33.80	24.43	26.88	0.34	21.99	24.44	-2.10
Dec	29.90	20.14	22.98	0.34	17.70	20.54	-2.10
Jan 2004	27.00	17.64	20.08	0.34	15.20	17.64	-2.10
Feb	23.90	14.86	16.98	0.34	12.42	14.54	-2.10
Mar	24.80	15.55	17.88	0.34	13.11	15.44	-2.10
Apr	25.70	17.10	18.78	0.34	14.66	16.34	-2.10
FL							
	Tangerines						
Oct	23.20	11.54	14.00	3.41	7.90	10.50	-0.69
Nov	25.40	11.39	16.20	3.41	7.67	12.70	-0.69
Dec	23.00	10.03	13.80	3.38	6.32	10.30	-0.72
Jan 2002	27.70	12.13	18.50	3.41	8.37	15.00	-0.69
Feb	25.00	11.41	15.80	4.28	7.68	12.30	0.18
Mar	27.00	12.61	17.80	4.28	8.88	14.30	0.18
Apr	32.00	16.25	22.80	4.28	12.53	19.30	0.18
Oct	23.20	11.10	13.60	2.81	7.66	10.40	-1.44
Nov	26.30	12.59	16.70	3.34	9.07	13.50	-0.91
Dec	25.40	11.75	15.80	4.55	8.17	12.60	0.30
Jan 2003	27.00	13.53	17.40	2.90	10.05	14.20	-1.35
Feb	22.60	10.24	13.00	3.80	6.73	9.80	-0.45
Mar	23.30	10.74	13.70	3.70	7.22	10.50	-0.55
Apr	23.80	11.21	14.20	3.50	7.71	11.00	-0.75
May	27.80	15.52	18.20	3.50	12.13	15.00	-0.75
Sep	23.00	10.71	13.25	2.00	7.22	10.00	-2.30
Oct	22.50	9.28	12.75	2.13	5.69	9.50	-2.17
Nov	23.70	9.56	13.95	2.55	5.90	10.70	-1.75
Dec	24.10	10.47	14.35	2.82	6.87	11.10	-1.48
Jan 2004	27.60	13.40	17.85	3.08	9.84	14.60	-1.22
Feb	22.60	10.23	12.85	3.50	6.69	9.60	-0.80
Mar	23.00	10.51	13.25	3.65	6.96	10.00	-0.65
Apr	28.00	14.48	18.25	3.55	10.96	15.00	-0.75
May	36.30	23.97	26.55	5.60	20.59	23.30	1.30

**Tangelos, and Temples: Average Prices and Equivalent Returns,
Florida, November 2001 - April 2004**

State, Month, and Year	Equiv. P.H.D.			Equiv. On-Tree			
	F.O.B. Packed	All	Fresh	Proc.	All	Fresh	Proc.
FL	Tangelos						
	<i>Dollars per box</i>	<i>Dollars per box</i>	<i>Dollars per box</i>	<i>Dollars per box</i>	<i>Dollars per box</i>	<i>Dollars per box</i>	<i>Dollars per box</i>
Nov 2002	15.00	4.80	6.80	2.50	2.30	4.40	-0.10
Dec 2002	16.50	5.73	8.30	3.25	3.23	5.90	0.65
Jan 2002	16.00	4.33	7.80	3.50	1.77	5.40	0.90
Feb 2002	32.00	5.18	23.80	3.50	2.59	21.40	0.90
Nov 2003	17.20	5.01	8.60	2.50	2.73	6.35	0.20
Dec 2003	15.60	4.57	7.00	3.20	2.29	4.75	0.90
Jan 2003	30.00	5.13	21.40	3.25	2.84	19.15	0.95
Nov 2004	23.00	10.20	14.75	2.10	7.69	12.35	-0.60
Dec 2004	22.00	10.00	13.75	2.25	7.50	11.35	-0.45
Jan 2004	35.00	11.37	26.75	2.25	8.78	24.35	-0.45
Feb 2004	35.00	5.61	26.75	2.25	2.95	24.35	-0.45
FL	Temples						
Jan 2002	16.50	6.37	8.50	3.70	4.12	6.30	1.40
Feb 2002	14.50	4.16	6.50	3.50	1.89	4.30	1.20
Mar 2002	11.70	3.44	3.70	3.40	1.16	1.50	1.10
Apr 2002	11.50	3.40	3.50	3.40	1.11	1.30	1.10
Jan 2003	14.50	4.82	5.90	4.10	2.54	3.65	1.80
Feb 2003	13.70	4.32	5.10	4.15	2.03	2.85	1.85
Mar 2003	17.00	3.38	8.40	2.75	1.08	6.15	0.45
Jan 2004	15.90	5.02	7.65	2.35	2.59	5.25	-0.10
Feb 2004	12.00	2.81	3.75	2.50	0.37	1.35	0.05
Mar 2004	14.00	2.97	5.75	2.75	0.52	3.35	0.30
Apr 2004	14.00	2.79	5.75	2.75	0.34	3.35	0.30

**Oranges: Marketing Year Average Prices Received,
Crop Years, 2001-02 and 2002-03**

State, Variety, and Utilization	2001-02			2002-03		
	F.O.B. Packed	Equiv. P.H.D.	Equiv. On-Tree	F.O.B. Packed	Equiv. P.H.D.	Equiv. On-Tree
	<i>Dollars per box</i>	<i>Dollars per box</i>	<i>Dollars per box</i>	<i>Dollars per box</i>	<i>Dollars per box</i>	<i>Dollars per box</i>
AZ						
Navel & Misc.		12.74	10.39		7.02	4.62
Fresh	23.60	16.50	14.15	16.70	9.46	7.06
Processing		-0.15	-2.50		0.40	-2.00
Valencias		3.42	1.03		2.91	0.47
Fresh	10.20	3.42	1.03	10.00	3.08	0.64
Processing					0.35	-2.10
All		8.26	5.89		4.66	2.23
Fresh	16.30	9.38	7.00	12.50	5.41	2.99
Processing		-0.15	-2.51		0.39	-2.03
CA						
Navel & Misc.		12.88	10.53		7.98	5.57
Fresh	21.90	14.80	12.45	17.00	9.76	7.35
Processing		-0.15	-2.50		0.40	-2.01
Valencias		7.51	5.12		6.53	4.09
Fresh	15.60	8.82	6.43	15.10	8.18	5.74
Processing		0.74	-1.65		0.34	-2.10
All		10.85	8.49		7.51	5.09
Fresh	19.60	12.59	10.23	16.40	9.26	6.84
Processing		0.24	-2.13		0.38	-2.04
FL						
Early/Mids.		4.94	2.88		4.82	2.62
Fresh	14.40	6.80	4.65	15.50	7.90	5.75
Processing		4.84	2.79		4.62	2.42
Valencias		6.30	4.20		6.05	3.85
Fresh	15.00	7.40	5.25	15.10	7.50	5.30
Processing		6.27	4.17		6.00	3.80
All		5.54	3.47		5.37	3.17
Fresh	14.60	6.99	4.84	15.40	7.78	5.61
Processing		5.48	3.41		5.25	3.05
TX						
Early/Mids.		4.52	3.23		4.00	2.68
Fresh	14.70	5.00	3.71	14.30	4.41	3.08
Processing		2.55	1.30		2.98	1.70
Valencias		5.51	4.22		5.89	4.57
Fresh	16.00	6.30	5.00	16.70	6.81	5.48
Processing		2.55	1.30		2.98	1.70
All		4.64	3.35		4.26	2.95
Fresh	14.90	5.15	3.86	14.70	4.77	3.44
Processing		2.55	1.30		2.98	1.70
US						
Early/Mids.						
Navels		6.30	4.20		5.56	3.32
Fresh	20.10	12.79	10.52	16.70	9.28	6.94
Processing		4.70	2.64		4.36	2.15
Valencias		6.46	4.32		6.12	3.88
Fresh	15.40	8.48	6.14	15.10	7.98	5.59
Processing		6.13	4.02		5.78	3.57
All		6.37	4.25		5.79	3.56
Fresh	18.40	11.26	8.97	16.10	8.87	6.52
Processing		5.34	3.26		5.00	2.79

**Oranges: Marketing Year Average Prices Received,
Crop Year 2003-04**

State, Variety, and Utilization	2003-04		
	F.O.B. Packed	Equiv. P.H.D.	Equiv. On-Tree
	<i>Dollars per box</i>	<i>Dollars per box</i>	<i>Dollars per box</i>
AZ			
Navel & Misc.		6.55	4.10
Fresh	17.10	9.72	7.27
Processing		0.39	-2.06
Valencias		4.74	2.25
Fresh	11.80	4.74	2.25
Processing			
All		5.90	3.43
Fresh	14.70	7.42	4.95
Processing		0.39	-2.06
CA			
Navel & Misc.		10.66	8.20
Fresh	19.60	12.22	9.76
Processing		0.39	-2.07
Valencias		10.87	8.38
Fresh	19.90	12.84	10.35
Processing		0.32	-2.17
All		10.72	8.25
Fresh	19.70	12.38	9.92
Processing		0.37	-2.10
FL			
Early/Mids.		3.82	1.76
Fresh	15.00	6.85	4.65
Processing		3.68	1.63
Valencias		5.15	3.00
Fresh	13.50	5.35	3.15
Processing		5.14	2.99
All		4.46	2.35
Fresh	14.40	6.22	4.02
Processing		4.38	2.29
TX			
Early/Mids.		4.21	2.87
Fresh	14.20	4.91	3.56
Processing		2.55	1.25
Valencias		4.82	3.49
Fresh	15.70	5.61	4.26
Processing		2.55	1.25
All		4.29	2.96
Fresh	15.10	5.01	3.66
Processing		2.55	1.25
US			
Early/Mids.			
Navels		5.19	3.06
Fresh	18.70	11.13	8.74
Processing		3.56	1.50
Valencias		5.67	3.49
Fresh	17.90	10.53	8.14
Processing		5.06	2.91
All		5.40	3.25
Fresh	18.50	10.95	8.56
Processing		4.28	2.17

**Grapefruit: Marketing Year Average Prices Received,
Crop Years, 2001-02 and 2002-03**

State, Variety, and Utilization	2001-02			2002-03		
	F.O.B. Packed	Equiv. P.H.D.	Equiv. On-Tree	F.O.B. Packed	Equiv. P.H.D.	Equiv. On-Tree
	<i>Dollars per box</i>	<i>Dollars per box</i>	<i>Dollars per box</i>	<i>Dollars per box</i>	<i>Dollars per box</i>	<i>Dollars per box</i>
AZ		6.73	4.50		7.73	5.46
Fresh	13.30	7.05	4.82	14.50	8.12	5.85
Processing		-0.25	-2.48		-0.26	-2.53
CA		8.05	5.83		11.54	9.28
Fresh	15.60	9.35	7.13	19.60	13.22	10.96
Processing		-0.25	-2.47		-0.26	-2.52
FL		4.99	2.54		5.13	2.79
Colored Seedless						
Fresh	15.20	7.10	4.92	15.00	7.13	5.13
Processing		2.89	0.17		2.66	-0.09
White Seedless ¹		4.33	1.96		3.89	1.59
Fresh	17.60	8.73	6.54	17.70	9.57	7.57
Processing		3.32	0.91		2.51	0.14
All		4.72	2.31		4.61	2.29
Fresh	15.70	7.43	5.25	15.50	7.63	5.63
Processing		3.12	0.56		2.58	0.04
TX		3.91	2.77		3.45	2.30
Fresh	15.20	5.60	4.45	15.10	5.31	4.14
Processing		0.60	-0.50		0.80	-0.32
US		4.92	2.64		5.12	2.93
Fresh	15.60	7.47	5.43	16.20	8.26	6.33
Processing		2.90	0.44		2.36	-0.05

¹ Includes seedy type grapefruit.

**Grapefruit: Marketing Year Average Prices Received,
Crop Year 2003-04**

State, Variety, and Utilization	2003-04		
	F.O.B. Packed	Equiv. P.H.D.	Equiv. On-Tree
	<i>Dollars per box</i>	<i>Dollars per box</i>	<i>Dollars per box</i>
AZ		9.69	7.37
Fresh	16.20	9.69	7.37
Processing			
CA		11.98	9.68
Fresh	20.30	13.80	11.50
Processing		-0.27	-2.57
FL			
Colored Seedless		5.99	3.82
Fresh	16.80	9.22	7.27
Processing		2.29	-0.13
White Seedless ¹		3.66	1.48
Fresh	17.00	9.40	7.50
Processing		2.17	-0.08
All		5.09	2.91
Fresh	16.80	9.26	7.32
Processing		2.23	-0.10
TX		3.98	2.83
Fresh	16.00	6.01	4.84
Processing		0.95	-0.17
US		5.56	3.48
Fresh	17.30	9.53	7.63
Processing		2.07	-0.16

¹ Includes seedy type grapefruit.

**Lemons, Limes, Tangelos, Tangerines, and Temples: Marketing Year
Average Prices Received, Crop Years, 2001-02 and 2002-03**

State, Variety, and Utilization	2001-02			2002-03		
	F.O.B. Packed	Equiv. P.H.D.	Equiv. On-Tree	F.O.B. Packed	Equiv. P.H.D.	Equiv. On-Tree
	<i>Dollars per box</i>	<i>Dollars per box</i>	<i>Dollars per box</i>	<i>Dollars per box</i>	<i>Dollars per box</i>	<i>Dollars per box</i>
Lemons						
AZ		14.62	10.44		9.80	5.54
Fresh	31.10	21.41	17.23	28.70	18.80	14.54
Processing		0.24	-3.94		0.22	-4.04
CA		15.68	11.50		10.92	6.66
Fresh	32.50	22.81	18.63	29.70	19.82	15.56
Processing		0.25	-3.93		0.22	-4.04
US		15.54	11.36		10.79	6.53
Fresh	32.30	22.63	18.45	29.60	19.71	15.45
Processing		0.25	-3.93		0.22	-4.04
Limes ¹						
FL		11.55	6.19			
Fresh	26.40	13.50	8.15			
Processing		1.75	-3.60			
Tangelos						
FL		5.00	2.47		4.89	2.60
Fresh	16.70	8.50	6.10	18.50	9.90	7.65
Processing		3.33	0.73		3.14	0.84
Tangerines						
AZ		15.83	13.44		18.09	15.65
Fresh	23.90	17.12	14.73	27.50	20.58	18.14
Processing		0.74	-1.65		0.34	-2.10
CA		17.65	15.26		15.79	13.35
Fresh	26.40	19.62	17.23	24.90	17.98	15.54
Processing		0.74	-1.65		0.43	-2.01
FL		11.53	7.81		11.91	8.40
Fresh	25.20	16.00	12.50	24.90	15.30	12.10
Processing		3.36	-0.47		3.53	-0.72
US		12.97	9.59		13.23	10.07
Fresh	25.40	16.99	13.84	25.00	16.40	13.48
Processing		3.39	-0.57		3.01	-0.94
Temples						
FL		4.46	2.19		4.30	2.01
Fresh	15.10	7.10	4.90	14.50	5.90	3.65
Processing		3.49	1.19		3.81	1.51

¹ Estimates discontinued with the 2002-03 crop.

**Lemons, Limes, Tangelos, Tangerines, and Temples: Marketing Year
Average Prices Received, Crop Year, 2003-04**

State, Variety, and Utilization	2003-04		
	F.O.B. Packed	Equiv. P.H.D.	Equiv. On-Tree
	<i>Dollars per box</i>	<i>Dollars per box</i>	<i>Dollars per box</i>
Lemons			
AZ		9.70	5.35
Fresh	24.50	14.40	10.05
Processing		0.20	-4.15
CA		13.37	9.11
Fresh	29.50	19.62	15.36
Processing		0.22	-4.04
US		12.85	8.57
Fresh	28.80	18.88	14.61
Processing		0.22	-4.06
Limes ¹			
FL			
Fresh			
Processing			
Tangelos			
FL		9.87	7.33
Fresh	24.50	16.25	13.85
Processing		2.23	-0.47
Tangerines			
AZ		11.81	9.32
Fresh	24.40	17.34	14.85
Processing		0.32	-2.17
CA		16.91	14.47
Fresh	26.10	19.18	16.74
Processing		0.34	-2.10
FL		11.00	7.42
Fresh	24.50	14.75	11.50
Processing		2.92	-1.38
US		12.42	9.17
Fresh	24.90	16.14	13.15
Processing		2.47	-1.51
Temples			
FL		3.43	1.00
Fresh	14.30	6.05	3.65
Processing		2.59	0.14

¹ Estimates discontinued with the 2002-03 crop.

**K-Early Citrus: Marketing Year Average Prices Received,
Crop Years, 2000-01 and 2001-02 ¹**

State and Utilization	2001-02			2002-03		
	F.O.B. Packed	Equiv. P.H.D.	Equiv. On-Tree	F.O.B. Packed	Equiv. P.H.D.	Equiv. On-Tree
	<i>Dollars per box</i>	<i>Dollars per box</i>	<i>Dollars per box</i>	<i>Dollars per box</i>	<i>Dollars per box</i>	<i>Dollars per box</i>
FL						
Fresh	15.00	3.77	1.20			
Processing		6.80	4.40			
		3.00	0.40			

¹ Estimates discontinued with the 2002-2003 crop.

**Florida Grapefruit: Marketing Year Average Prices Received,
Crop Years, 2001-02 and 2002-03**

Variety, Area, and Utilization	2001-02			2002-03		
	F.O.B. Packed	Equiv. P.H.D.	Equiv. On-Tree	F.O.B. Packed	Equiv. P.H.D.	Equiv. On-Tree
	<i>Dollars per box</i>	<i>Dollars per box</i>	<i>Dollars per box</i>	<i>Dollars per box</i>	<i>Dollars per box</i>	<i>Dollars per box</i>
White Seedless						
Interior		3.78	1.77		2.69	0.83
Fresh	17.50	10.10	8.00	14.60	6.80	4.80
Processing		3.31	1.30		2.51	0.66
Indian River		4.62	2.06		4.62	2.06
Fresh	17.60	8.50	6.30	18.00	9.85	7.85
Processing		3.32	0.64		2.51	-0.27
Colored Seedless						
Interior		4.55	2.32		4.37	2.15
Fresh	14.80	7.80	5.70	13.80	6.60	4.60
Processing		2.88	0.57		2.66	0.28
Indian River		5.17	2.63		5.59	3.18
Fresh	15.30	6.90	4.70	15.50	7.35	5.35
Processing		2.89	-0.11		2.66	-0.44

**Florida Grapefruit: Marketing Year Average Prices Received,
Crop Year 2003-04**

Variety, Area, and Utilization	2003-04		
	F.O.B. Packed	Equiv. P.H.D.	Equiv. On-Tree
	<i>Dollars per box</i>	<i>Dollars per box</i>	<i>Dollars per box</i>
White Seedless			
Interior			2.38
Fresh	16.30		8.80
Processing			2.18
Indian River			4.16
Fresh	17.00		9.40
Processing			2.17
Colored Seedless			
Interior			4.05
Fresh	15.70		8.20
Processing			2.28
Indian River			7.06
Fresh	17.10		9.50
Processing			2.30

This page intentionally left blank.

Marketing Seasons and Net Weight per Box

Oranges:

Arizona	November 1 to August 31	75 pounds
California Navels	November 1 to June 15	75 pounds
California Valencias	March 15 to December 20	75 pounds
Florida Early and Midseason	October 1 to April 15	90 pounds
Florida Valencia	February 1 to July 31	90 pounds
Texas	September 25 to May 15	85 pounds

Grapefruit:

Arizona	November 1 to July 31	67 pounds
California	November 1 to October 31	67 pounds
Florida	September 10 to July 31	85 pounds
Texas	October 1 to May 30	80 pounds

K-Early Citrus Fruit:

Florida	October 1 to November 30	90 pounds
---------	--------------------------	-----------

Lemons:

Arizona	August 15 to March 1	76 pounds
California	August 1 to July 31	76 pounds

Limes:

Florida	April 1 to March 31	88 pounds
---------	---------------------	-----------

Tangelos:

Florida	October 15 to April 15	90 pounds
---------	------------------------	-----------

Tangerines:

Arizona	November 1 to February 1	75 pounds
California	November 1 to May 15	75 pounds
Florida	October 1 to April 1	95 pounds

Temples:

Florida	December 1 to May 1	90 pounds
---------	---------------------	-----------

Marketing Year Average Prices and Value of Production

State level marketing year average (MYA), or price per box, for fresh and processed sales are the weighted average of monthly sales that occur during a crop's marketing season, adjusted to the packinghouse-door level. The "all" sales MYA price is derived by dividing the "all" sales value by the "all" sales boxes. MYA prices at the U.S. level for commodities with different State box weights are computed as follows:

$$\text{Fresh Market MYAP} = \frac{\Sigma(\text{State Fresh Value} * \text{State Box Weight})}{\Sigma(\text{State Fresh Boxes} * \text{State Box Weight})}$$

$$\text{Process Market MYAP} = \frac{\Sigma(\text{State Process Value} * \text{State Box Weight})}{\Sigma(\text{State Process Boxes} * \text{State Box Weight})}$$

$$\text{"All" Sales MYAP} = \frac{\Sigma(\text{State All Value} * \text{State Box Weight})}{\Sigma(\text{State All Boxes} * \text{State Box Weight})}$$

For commodities with the same box weights across all States, the U.S. MYA's are derived by dividing the sum of States' values by the sum of States' boxes.

U.S. value of production for a given commodity is the sum of the State's values for that commodity. The State level value of production for each commodity is computed as follows:

$$\text{Fresh Market Value} = \text{Fresh Market MYAP} * \text{Fresh Market Boxes}$$

$$\text{Process Market Value} = \text{Process Market MYAP} * \text{Process Market Boxes}$$

$$\text{"All" Sales Value} = \text{Fresh Market Value} + \text{Process Market Value}$$

Citrus prices are based on weighted average f.o.b. packed prices received for fresh fruit and weighted average prices received at the processing plant door for processing fruit. Equivalent returns for fresh and processed fruit are calculated at the packinghouse-door level by deducting sorting, grading, packing, cooling, marketing, and other costs from the two base prices. In some cases, this results in negative returns.

Information Contacts

Listed below are the commodity specialists in the Crops Branch of the National Agricultural Statistics Service to contact for additional information.

Joe Prusacki, Chief	(202) 720-2127
Field Crops Section	
Greg Thessen, Head	(202) 720-2127
Lance Honig - Wheat, Rye	(202) 720-8068
Darin Jantzi - Corn, Proso Millet, Flaxseed	(202) 720-9526
Troy Joshua - Cotton, Cotton Ginnings	(202) 720-5944
Dennis Koong - Hay, Oats, Sorghum	(202) 690-3234
Jason Lamprecht - Soybeans, Minor Oilseeds	(202) 720-7369
Mark R. Miller - Peanuts, Rice	(202) 720-7688
Brian Young - Crop Weather, Barley, Sugar Crops	(202) 720-7621
Fruit, Vegetable & Special Crops Section	
Jim Smith, Head	(202) 720-2127
Cathy Scherrer - Dry Beans, Potatoes, Sweet Potatoes	(202) 720-4285
Jorge Garcia-Pratts - Citrus, Tropical Fruits	(202) 720-5412
Debbie Flippin - Austrian Winter Peas, Dry Edible Peas, Lentils, Mint, Mushrooms, Peaches, Pears, Wrinkled Seed Peas	(202) 720-3250
Leslie Colburn - Berries, Grapes, Maple Syrup, Tobacco	(202) 720-7235
Terry O'Connor - Apples, Apricots, Cherries, Cranberries, Plums, Prunes	(202) 720-4288
Kim Ritchie - Hops	(360) 902-1940
Rich Holcomb - Floriculture, Nursery, Nuts	(202) 720-4215
Biz Wallingsford - Fresh and Processing Vegetables, Onions, Strawberries	(202) 720-2157

Index

	Page
Comments	3
Frozen Concentrated Orange Juice Yield, Florida	11
Grapefruit	4, 12
Grapefruit Processed, Florida	11
Information Contacts	48
K-Early Citrus Fruit	4, 14
Lemons	4, 14
Limes	4, 14
Marketing Year Average Prices Received, by Crop, by State	38
Marketing Seasons and Net Weight per Box	46
Monthly Average Prices and Equivalent Returns, by Crop, by State	17
Oranges	4, 6
Oranges Processed, Florida	11
Price Definitions	47
Price Narrative	16
Tangelos	4, 14
Tangerines	4, 14
Tangerines Processed, Florida	11
Temples	4, 14
Total Citrus Fruits	5

USDA Data Users' Meeting

October 18, 2004

Hampton Inn & Suites

Chicago, Illinois

(312) 832-0330

The USDA's National Agricultural Statistics Service will be organizing an open forum for data users. The purpose will be to provide updates on pending changes in the various statistical and information programs and seek comments and input from data users. Other USDA agencies to be represented will include the Agricultural Marketing Service, the Economic Research Service, the Foreign Agricultural Service, and World Agricultural Outlook Board. The Foreign Trade Division from the Census Bureau will also be included in the meeting.

For registration details or additional information for the Data Users' Meeting, see the NASS homepage at www.usda.gov/nass/ or contact Karlyn McCutcheon (NASS) at (202) 690-8141 or at karlyn_mccutcheon@nass.usda.gov.

This Data Users' Meeting precedes an Industry Outlook meeting that will be held at the same location on October 19, 2004. The Outlook meeting brings together analysts from various commodity sectors to discuss the outlook situation. For more information about the outlook meeting and to register contact Jim Robb (Livestock and Marketing Information Center) at (720) 544-2941 or at robb@lmic.info.

ACCESS TO REPORTS!!

INTERNET ACCESS

All NASS reports are available free of charge on the worldwide Internet. For access, connect to the Internet and go to the NASS Home Page at: www.usda.gov/nass/. Select "Today's Reports" or Publications and then Reports Calendar or Publications and then Search, by Title or Subject.

E-MAIL SUBSCRIPTION

All NASS reports are available by subscription free of charge direct to your e-mail address. Starting with the NASS Home Page at www.usda.gov/nass/, click on **Publications**, then click on the **Subscribe by E-mail** button which takes you to the page describing e-mail delivery of reports. Finally, click on **Go to the Subscription Page** and follow the instructions.

PRINTED REPORTS OR DATA PRODUCTS

CALL OUR TOLL-FREE ORDER DESK: 800-999-6779 (U.S. and Canada)
Other areas, please call 703-605-6220 FAX: 703-605-6900
(Visa, MasterCard, check, or money order acceptable for payment.)

ASSISTANCE

For **assistance** with general agricultural statistics or further information about NASS or its products or services, contact the **Agricultural Statistics Hotline** at **800-727-9540**, 7:30 a.m. to 4:00 p.m. ET, or e-mail: nass@nass.usda.gov.

The United States Department of Agriculture (USDA) prohibits discrimination in all its programs on the basis of race, color, national origin, gender, religion, age, disability, political beliefs, sexual orientation, and marital or family status. (Not all prohibited bases apply to all programs.) Persons with disabilities who require alternative means for communication of program information (braille, large print, audiotape, etc.) should contact the USDA's TARGET Center at 202-720-2600 (voice and TDD).

To file a complaint of discrimination, write USDA, Director, Office of Civil Rights, Room 326-W, Whitten Building, 1400 Independence Avenue, SW, Washington, D.C., 20250-9410, or call 202-720-5964 (voice or TDD). USDA is an equal opportunity provider and employer.