



United States  
Department of  
Agriculture

National  
Agricultural  
Statistics  
Service



Statistical  
Bulletin  
Number 986

# Hogs and Pigs

## Final Estimates 1998-2002

March 2004

# USDA





## Contents

	<b>Page</b>
Summary .....	2
Quarterly U.S. Inventory by Class and Weight Group, 1998-2002 .....	3
Quarterly U.S. Sows Farrowed, Pig Crop, and Pigs per Litter, 1998-2002 .....	4
Hogs and Pigs: Inventory by State and U.S., 1998-2002	
December 1. ....	5
March 1. ....	12
June 1. ....	16
September 1 . ....	20
Farrowings: Number of Sows, Pigs per Litter, Pig Crop by State and U.S., 1998-2002	
December-February. ....	24
March-May. ....	26
June-August. ....	28
September-November. ....	30
Annual Farrowings by State and U.S., 1998-2002. ....	32
Index. ....	35
Statistical Bulletin Publication Schedule and other ASB Services. ....	37

## Summary

**Hogs and Pigs:** Final Estimates by States, 1998-2002, U.S. Department of Agriculture, Agricultural Statistics Board, National Agricultural Statistics Service, Statistical Bulletin No. 986.

**Introduction:** This bulletin presents final estimates, including revisions made by the Agricultural Statistics Board (ASB), for the production years 1998 through 2002. Inventory, market hogs, breeding herd, and pig crops were published during calendar years 1998-2002 in periodic ASB reports. Data included in this publication provide a historic record and a benchmark for current estimates. The number of livestock operations and inventory by size groups will be published in Livestock Operations - Final Estimates 1998-2002, Statistical Bulletin 1002. Inventory values and value per head will be published in the Meat Animals, PDI - Final Estimates 1998-2002, Statistical Bulletin No. 995.

**Procedures:** Revisions were made after a thorough review of the original survey data and all additional data now available, including the 2002 Census of Agriculture. Other data series considered included slaughter data, shipment records, imports, and exports. Inventory levels, and pig crops, and their relationship to slaughter were compared to historic totals. The 1998-2002 estimates shown herein are considered final and will not be revised again.

At the National level, revisions to estimates of all hogs and pigs and annual pig crops were less than one percent.

Year	U. S December 1 Inventory			U.S. Annual Pig Crop		
	From (000)	To (000)	Change %	From (000)	To (000)	Change %
2002	59,513	59,554	0.069	101,344	101,678	-0.330
2001	59,804	59,722	-0.137	100,503	100,617	0.113
2000	59,138	59,110	-0.047	100,748	100,743	-0.005
1999	59,342	59,335	-0.012	102,354	102,352	-0.002
1998	62,206	62,204	-0.003	105,005	105,005	0.000

**Historic Estimates:** Final estimates of Hogs and Pigs in earlier years are available in Statistical Bulletins No. 951 for 1993-1997, No. 904 for 1988-92, No. 797 for 1983-87, No. 716 for 1979-82, No. 648 for 1976-78, No. 588 for 1970-75, No. 496 for 1965-69, No. 383 for 1960-64, No. 276 for 1955-59, and No. 187 for 1930-54.

**Hogs and Pigs: Inventory Number by Class, Weight Group,  
and Quarter, United States, 1998-2002<sup>1</sup>**

Item	1998	1999	2000	2001	2002
	<i>1,000 Head</i>	<i>1,000 Head</i>	<i>1,000 Head</i>	<i>1,000 Head</i>	<i>1,000 Head</i>
March 1 Inventory					
All Hogs and Pigs	60,163	60,189	57,775	57,546	59,256
Kept for Breeding	6,942	6,527	6,189	6,224	6,230
Market	53,220	53,662	51,587	51,322	53,026
Market Hogs and Pigs by Weight Groups					
Under 60 Pounds	20,192	19,978	19,217	18,754	19,560
60-119 Pounds	12,791	12,898	12,408	12,430	12,938
120-179 Pounds	10,774	10,994	10,550	10,800	11,148
180 Pounds and Over	9,464	9,791	9,411	9,338	9,380
June 1 Inventory					
All Hogs and Pigs	62,213	60,894	59,110	58,525	60,391
Kept for Breeding	6,958	6,515	6,233	6,178	6,208
Market	55,254	54,379	52,878	52,347	54,183
Market Hogs and Pigs by Weight Groups					
Under 60 Pounds	21,482	20,532	19,907	19,900	20,226
60-119 Pounds	13,711	13,500	13,246	12,945	13,539
120-179 Pounds	11,084	11,075	10,708	10,531	10,906
180 Pounds and Over	8,978	9,271	9,016	8,971	9,512
September 1 Inventory					
All Hogs and Pigs	63,488	60,774	59,488	59,699	60,753
Kept for Breeding	6,875	6,301	6,245	6,155	6,051
Market	56,612	54,473	53,244	53,544	54,702
Market Hogs and Pigs by Weight Groups					
Under 60 Pounds	21,189	20,243	19,955	19,923	20,038
60-119 Pounds	14,032	13,413	13,054	13,361	13,632
120-179 Pounds	11,555	11,128	10,815	10,849	11,113
180 Pounds and Over	9,837	9,688	9,419	9,411	9,919
December 1 Inventory					
All Hogs and Pigs	62,204	59,335	59,110	59,722	59,554
Kept for Breeding	6,682	6,233	6,267	6,201	6,058
Market	55,522	53,103	52,843	53,521	53,496
Market Hogs and Pigs by Weight Groups					
Under 60 Pounds	20,140	19,241	19,413	19,903	19,485
60-119 Pounds	13,630	13,106	12,926	12,877	13,033
120-179 Pounds	11,584	11,071	10,841	10,755	10,875
180 Pounds and Over	10,167	9,684	9,663	9,986	10,103

<sup>1</sup> May not add due to rounding.

**Farrowings: Number of Sows, Pig Crop, and Pigs  
per Litter, United States, 1998-2002 <sup>1</sup>**

Item	1998	1999	2000	2001	2002
	<i>1,000 Head</i>	<i>1,000 Head</i>	<i>1,000 Head</i>	<i>1,000 Head</i>	<i>1,000 Head</i>
Sows Farrowing					
Dec-Feb <sup>2</sup>	2,929	2,891	2,798	2,748	2,835
Mar-May	3,086	2,986	2,885	2,870	2,941
Dec-May <sup>2</sup>	6,014	5,877	5,683	5,618	5,776
Jun-Aug	3,054	2,920	2,889	2,878	2,883
Sep-Nov	2,993	2,844	2,837	2,889	2,833
Jun-Nov	6,046	5,764	5,726	5,767	5,716
Pig Crop					
Dec-Feb <sup>2</sup>	25,480	25,245	24,521	23,970	24,857
Mar-May	26,989	26,271	25,565	25,507	26,001
Dec-May <sup>2</sup>	52,469	51,516	50,086	49,477	50,858
Jun-Aug	26,634	25,863	25,546	25,587	25,725
Sep-Nov	25,902	24,973	25,110	25,553	25,094
Jun-Nov	52,535	50,836	50,656	51,140	50,820
	<i>Number</i>	<i>Number</i>	<i>Number</i>	<i>Number</i>	<i>Number</i>
Pigs per Litter					
Dec-Feb <sup>2</sup>	8.70	8.73	8.76	8.72	8.77
Mar-May	8.75	8.80	8.86	8.89	8.84
Dec-May <sup>2</sup>	8.77	8.81	8.81	8.81	8.85
Jun-Aug	8.72	8.86	8.84	8.89	8.92
Sep-Nov	8.66	8.78	8.85	8.85	8.86
Jun-Nov	8.82	8.85	8.87	8.89	8.91

<sup>1</sup> May not add due to rounding.

<sup>2</sup> December preceding year.

**Hogs and Pigs: Total Inventory Number by State  
and United States, December 1, 1998-2002 <sup>1</sup>**

State	1998	1999	2000	2001	2002
	<i>1,000 Head</i>	<i>1,000 Head</i>	<i>1,000 Head</i>	<i>1,000 Head</i>	<i>1,000 Head</i>
AL	190	175	165	195	165
AK	2.1	1.4	0.8	1.0	1.2
AZ	115	140	9	133	138
AR	750	710	685	580	305
CA	210	190	150	110	150
CO	870	910	840	800	790
CT	4.0	3.5	4.0	3.5	4.0
DE	30.0	25.0	20.0	15.0	13.0
FL	55.0	40.0	40.0	35.0	35.0
GA	480	480	380	315	345
HI	29.0	28.0	26.0	27.0	24.0
ID	27.0	22.0	24.0	24.0	22.0
IL	4,850	4,050	4,150	4,250	4,150
IN	4,050	3,250	3,350	3,200	3,250
IA	15,300	15,400	15,100	15,400	15,500
KS	1,590	1,460	1,520	1,570	1,530
KY	520	460	430	405	360
LA	30.0	29.0	29.0	26.0	20.0
ME	6.0	6.5	6.0	5.5	5.0
MD	65.0	50.0	40.0	37.0	35.0
MA	20.0	21.0	21.0	16.5	14.0
MI	1,120	980	950	960	870
MN	5,700	5,500	5,800	5,800	6,100
MS	275	280	315	285	275
MO	3,300	3,150	2,900	2,950	2,950
MT	190	155	155	170	175
NE	3,400	3,000	3,050	2,900	3,000
NV	7.5	7.5	7.5	6.5	5.5
NH	4.0	3.5	4.0	3.5	3.2
NJ	24.0	15.0	14.0	13.0	15.0
NM	6.0	6.0	3.0	3.0	3.0
NY	60.0	40.0	80.0	75.0	86.0
NC	9,700	9,500	9,300	9,800	9,700
ND	205	190	185	154	144
OH	1,700	1,480	1,490	1,430	1,440
OK	1,920	2,260	2,310	2,480	2,240
OR	30.0	30.0	32.0	24.0	26.0
PA	1,100	1,050	1,030	1,060	1,130
RI	2.9	2.4	2.5	2.1	2.3
SC	270	245	290	320	300
SD	1,400	1,260	1,320	1,290	1,330
TN	300	250	230	225	225
TX	640	870	920	900	930
UT	380	520	550	610	670
VT	3.0	2.5	2.5	2.0	2.0
VA	390	370	425	415	400
WA	37.0	30.0	27.0	27.0	29.0
WV	16.0	12.0	10.0	11.0	12.0
WI	690	570	610	540	520
WY	140	105	108	117	115
US	62,204	59,335	59,110	59,722	59,554

<sup>1</sup> May not add due to rounding.

**Hogs and Pigs: Breeding Inventory Number by State  
and United States, December 1, 1998-2002 <sup>1</sup>**

State	1998	1999	2000	2001	2002
	<i>1,000 Head</i>	<i>1,000 Head</i>	<i>1,000 Head</i>	<i>1,000 Head</i>	<i>1,000 Head</i>
AL	15	15	15	15	12
AK	0.4	0.3	0.2	0.2	0.3
AZ	17	19	2	14	14
AR	110	110	110	100	80
CA	27	25	20	20	22
CO	180	210	190	175	160
CT	0.9	0.9	0.9	0.8	0.8
DE	5.0	4.0	4.0	3.5	3.5
FL	10.0	7.0	8.0	7.0	7.0
GA	70	60	55	50	50
HI	5.0	5.0	5.0	6.0	5.0
ID	4.0	4.0	4.0	4.0	3.0
IL	530	420	450	450	430
IN	450	370	375	340	330
IA	1,260	1,160	1,120	1,130	1,100
KS	170	150	160	170	160
KY	65	55	50	50	40
LA	5.0	4.0	3.0	3.0	3.0
ME	1.4	1.5	1.5	1.6	1.3
MD	7.0	6.0	6.0	6.0	6.0
MA	3.0	3.0	2.5	2.5	2.0
MI	120	120	110	110	100
MN	620	560	600	570	580
MS	30	26	28	28	29
MO	400	410	380	375	360
MT	19	17	18	19	20
NE	420	380	360	370	365
NV	1.0	1.0	1.0	1.0	1.0
NH	0.6	0.8	0.9	0.8	0.8
NJ	2.0	2.0	2.0	2.0	2.0
NM	1.3	1.2	0.6	0.5	0.4
NY	8.0	6.0	10.0	9.0	9.0
NC	1,000	1,000	1,000	1,000	1,000
ND	30	25	27	28	24
OH	200	170	170	160	155
OK	280	310	340	340	330
OR	5.0	5.0	6.0	6.0	5.0
PA	120	120	120	130	130
RI	0.7	0.5	0.7	0.5	0.6
SC	30	25	25	30	30
SD	130	120	140	145	140
TN	40	30	35	30	30
TX	80	80	85	100	105
UT	60	70	80	70	90
VT	0.7	0.5	0.6	0.5	0.4
VA	35	34	35	35	35
WA	5.0	4.0	4.0	4.0	4.0
WV	3.0	2.0	2.0	2.0	2.0
WI	85	65	75	65	60
WY	20	18	29	21	20
US	6,682	6,233	6,267	6,201	6,058

<sup>1</sup> May not add due to rounding.



**Hogs and Pigs: Market Inventory Number by State  
and United States, December 1, 1998-2002 <sup>1</sup>**

State	1998	1999	2000	2001	2002
	<i>1,000 Head</i>	<i>1,000 Head</i>	<i>1,000 Head</i>	<i>1,000 Head</i>	<i>1,000 Head</i>
AL	175	160	150	180	153
AK	1.7	1.1	0.6	0.8	0.9
AZ	98	121	7	119	124
AR	640	600	575	480	225
CA	183	165	130	90	128
CO	690	700	650	625	630
CT	3.1	2.6	3.1	2.7	3.2
DE	25.0	21.0	16.0	11.5	9.5
FL	45.0	33.0	32.0	28.0	28.0
GA	410	420	325	265	295
HI	24.0	23.0	21.0	21.0	19.0
ID	23.0	18.0	20.0	20.0	19.0
IL	4,320	3,630	3,700	3,800	3,720
IN	3,600	2,880	2,975	2,860	2,920
IA	14,040	14,240	13,980	14,270	14,400
KS	1,420	1,310	1,360	1,400	1,370
KY	455	405	380	355	320
LA	25.0	25.0	26.0	23.0	17.0
ME	4.6	5.0	4.5	3.9	3.7
MD	58.0	44.0	34.0	31.0	29.0
MA	17.0	18.0	18.5	14.0	12.0
MI	1,000	860	840	850	770
MN	5,080	4,940	5,200	5,230	5,520
MS	245	254	287	257	246
MO	2,900	2,740	2,520	2,575	2,590
MT	171	138	137	151	155
NE	2,980	2,620	2,690	2,530	2,635
NV	6.5	6.5	6.5	5.5	4.5
NH	3.4	2.7	3.1	2.7	2.4
NJ	22.0	13.0	12.0	11.0	13.0
NM	4.7	4.8	2.4	2.5	2.6
NY	52.0	34.0	70.0	66.0	77.0
NC	8,700	8,500	8,300	8,800	8,700
ND	175	165	158	126	120
OH	1,500	1,310	1,320	1,270	1,285
OK	1,640	1,950	1,970	2,140	1,910
OR	25.0	25.0	26.0	18.0	21.0
PA	980	930	910	930	1,000
RI	2.2	1.9	1.8	1.6	1.7
SC	240	220	265	290	270
SD	1,270	1,140	1,180	1,145	1,190
TN	260	220	195	195	195
TX	560	790	835	800	825
UT	320	450	470	540	580
VT	2.3	2.0	1.9	1.5	1.6
VA	355	336	390	380	365
WA	32.0	26.0	23.0	23.0	25.0
WV	13.0	10.0	8.0	9.0	10.0
WI	605	505	535	475	460
WY	120	87	79	96	95
US	55,522	53,103	52,843	53,521	53,496

<sup>1</sup> May not add due to rounding.

**Hogs and Pigs: Market Inventory, Under 60 Pounds by State  
and United States, December 1, 1998-2002 <sup>1</sup>**

State	1998	1999	2000	2001	2002
	<i>1,000 Head</i>	<i>1,000 Head</i>	<i>1,000 Head</i>	<i>1,000 Head</i>	<i>1,000 Head</i>
AL	72	51	54	63	67
AK	0.6	0.5	0.3	0.5	0.4
AZ	42	47	4	38	43
AR	200	210	210	230	115
CA	70	55	32	35	39
CO	335	350	370	350	350
CT	1.0	0.8	1.1	0.9	1.0
DE	7.0	9.0	6.5	5.0	4.0
FL	20.0	17.0	18.0	15.0	13.0
GA	160	160	120	106	138
HI	10.0	9.0	10.0	9.0	8.0
ID	8.0	7.0	7.0	7.0	7.0
IL	1,550	1,270	1,310	1,380	1,320
IN	1,370	1,090	1,110	1,040	1,040
IA	4,400	4,360	4,360	4,510	4,350
KS	535	520	495	480	440
KY	185	155	130	125	110
LA	10.0	9.0	9.0	8.0	6.0
ME	1.8	3.1	2.6	2.4	2.2
MD	14.0	9.0	7.0	9.0	8.0
MA	4.4	6.5	7.0	4.7	3.9
MI	340	330	320	315	285
MN	2,020	1,940	2,110	2,130	2,110
MS	74	45	55	61	90
MO	1,130	1,140	1,010	1,140	1,190
MT	68	55	51	54	51
NE	1,165	990	1,010	1,030	1,040
NV	1.8	1.7	1.8	1.3	1.3
NH	1.0	0.5	1.0	0.7	0.9
NJ	4.0	3.0	2.0	2.0	2.0
NM	1.5	1.6	1.2	1.1	1.3
NY	18.0	9.0	28.0	20.0	30.0
NC	3,400	3,350	3,400	3,500	3,450
ND	59	64	60	57	48
OH	590	530	540	520	525
OK	590	820	880	860	910
OR	8.0	8.0	9.0	7.0	8.0
PA	340	330	330	365	355
RI	1.0	0.9	0.8	0.6	0.6
SC	70	57	75	78	65
SD	405	370	430	410	370
TN	120	70	70	78	75
TX	210	280	215	260	240
UT	130	180	190	235	230
VT	1.2	0.7	0.9	0.7	0.6
VA	116	114	125	125	125
WA	11.0	9.0	8.0	8.0	9.0
WV	5.0	2.0	2.0	3.0	4.0
WI	215	165	190	180	165
WY	50	36	34	42	38
US	20,140	19,241	19,413	19,903	19,485

<sup>1</sup> May not add due to rounding.

**Hogs and Pigs: Market Inventory, 60-119 Pounds by State  
and United States, December 1, 1998-2002 <sup>1</sup>**

State	1998	1999	2000	2001	2002
	<i>1,000 Head</i>	<i>1,000 Head</i>	<i>1,000 Head</i>	<i>1,000 Head</i>	<i>1,000 Head</i>
AL	38	38	34	42	29
AK	0.5	0.2	0.1	0.1	0.3
AZ	21	25	1	27	29
AR	165	140	135	75	40
CA	50	50	43	25	32
CO	120	115	80	90	90
CT	0.6	0.7	0.7	0.5	0.8
DE	5.5	3.5	4.5	3.0	2.5
FL	12.0	9.0	8.0	7.0	9.0
GA	100	110	90	69	67
HI	7.0	7.0	6.0	6.0	5.0
ID	6.0	5.0	5.0	5.0	5.0
IL	1,050	900	920	920	920
IN	840	740	725	710	710
IA	3,700	3,770	3,790	3,900	3,900
KS	290	310	285	290	320
KY	110	115	95	90	80
LA	7.0	7.0	8.0	6.0	4.0
ME	1.3	0.9	1.0	1.0	0.8
MD	11.0	12.0	7.0	5.0	5.0
MA	4.6	5.5	5.5	3.9	3.8
MI	270	205	200	205	180
MN	1,270	1,190	1,270	1,250	1,350
MS	61	71	85	70	59
MO	770	770	680	560	530
MT	43	35	34	38	39
NE	780	650	700	610	690
NV	1.7	1.9	1.8	1.5	1.3
NH	1.0	0.9	0.8	0.9	0.3
NJ	4.5	3.0	2.0	2.0	2.0
NM	0.6	1.2	0.8	0.6	0.5
NY	14.0	9.0	15.0	15.0	17.0
NC	2,000	1,950	1,800	2,020	2,050
ND	52	39	40	33	29
OH	370	320	320	310	310
OK	320	310	355	350	260
OR	7.0	7.0	7.0	4.0	5.0
PA	255	250	235	235	250
RI	0.7	0.5	0.5	0.3	0.5
SC	65	62	70	70	70
SD	320	290	290	290	310
TN	55	60	50	43	42
TX	120	190	175	140	240
UT	60	85	110	120	120
VT	0.2	0.8	0.5	0.2	0.3
VA	85	79	92	101	85
WA	9.0	7.0	6.0	6.0	7.0
WV	3.0	3.0	2.0	2.0	3.0
WI	130	135	125	105	110
WY	23	17	15	19	19
US	13,630	13,106	12,926	12,877	13,033

<sup>1</sup> May not add due to rounding.

**Hogs and Pigs: Market Inventory, 120-179 Pounds by State  
and United States, December 1, 1998-2002 <sup>1</sup>**

State	1998	1999	2000	2001	2002
	<i>1,000 Head</i>	<i>1,000 Head</i>	<i>1,000 Head</i>	<i>1,000 Head</i>	<i>1,000 Head</i>
AL	35	35	31	37	28
AK	0.4	0.2	0.1	0.1	0.1
AZ	17	24	1	26	26
AR	150	140	125	75	35
CA	40	35	45	11	29
CO	120	110	85	75	80
CT	0.9	0.5	0.6	0.5	0.6
DE	4.5	3.5	2.0	1.5	1.5
FL	10.0	4.0	4.0	4.0	4.0
GA	80	80	60	49	50
HI	4.0	4.0	3.0	4.0	4.0
ID	5.0	3.0	4.0	4.0	4.0
IL	920	800	810	830	800
IN	780	580	590	580	620
IA	3,120	3,210	3,090	3,060	3,200
KS	280	230	210	250	290
KY	90	70	85	80	70
LA	5.0	4.0	5.0	4.0	4.0
ME	0.5	0.5	0.5	0.3	0.4
MD	12.0	11.0	9.0	8.5	7.0
MA	4.0	3.7	3.7	3.0	2.6
MI	180	170	170	170	155
MN	960	1,030	1,040	1,030	1,130
MS	56	70	77	61	50
MO	570	520	510	525	480
MT	33	26	30	30	34
NE	600	550	550	500	500
NV	1.6	1.4	1.4	1.4	0.9
NH	0.9	0.6	0.7	0.6	0.7
NJ	5.5	2.0	3.0	4.0	3.0
NM	0.2	0.3	0.2	0.2	0.3
NY	10.0	8.0	15.0	16.0	15.0
NC	1,850	1,750	1,650	1,730	1,700
ND	37	35	31	20	23
OH	330	285	280	265	275
OK	265	270	245	300	160
OR	6.0	5.0	4.0	4.0	4.0
PA	210	195	190	180	200
RI	0.4	0.4	0.3	0.4	0.3
SC	55	55	60	62	55
SD	280	270	260	250	280
TN	40	40	40	40	42
TX	115	160	200	165	180
UT	60	75	100	110	130
VT	0.3	0.2	0.2	0.2	0.2
VA	78	74	88	64	80
WA	6.0	5.0	5.0	5.0	5.0
WV	2.0	3.0	1.0	1.0	1.0
WI	130	105	110	100	95
WY	24	17	15	17	19
US	11,584	11,071	10,841	10,755	10,875

<sup>1</sup> May not add due to rounding.

**Hogs and Pigs: Market Inventory, 180 Pounds and Over by State  
and United States, December 1, 1998-2002 <sup>1</sup>**

State	1998	1999	2000	2001	2002
	<i>1,000 Head</i>	<i>1,000 Head</i>	<i>1,000 Head</i>	<i>1,000 Head</i>	<i>1,000 Head</i>
AL	30	36	31	38	29
AK	0.2	0.2	0.1	0.1	0.1
AZ	18	25	1	28	26
AR	125	110	105	100	35
CA	23	25	10	19	28
CO	115	125	115	110	110
CT	0.6	0.6	0.7	0.8	0.8
DE	8.0	5.0	3.0	2.0	1.5
FL	3.0	3.0	2.0	2.0	2.0
GA	70	70	55	41	40
HI	3.0	3.0	2.0	2.0	2.0
ID	4.0	3.0	4.0	4.0	3.0
IL	800	660	660	670	680
IN	610	470	550	530	550
IA	2,820	2,900	2,740	2,800	2,950
KS	315	250	370	380	320
KY	70	65	70	60	60
LA	3.0	5.0	4.0	5.0	3.0
ME	1.0	0.5	0.4	0.2	0.3
MD	21.0	12.0	11.0	8.5	9.0
MA	4.0	2.3	2.3	2.4	1.7
MI	210	155	150	160	150
MN	830	780	780	820	930
MS	54	68	70	65	47
MO	430	310	320	350	390
MT	27	22	22	29	31
NE	435	430	430	390	405
NV	1.4	1.5	1.5	1.3	1.0
NH	0.5	0.7	0.6	0.5	0.5
NJ	8.0	5.0	5.0	3.0	6.0
NM	2.4	1.7	0.2	0.6	0.5
NY	10.0	8.0	12.0	15.0	15.0
NC	1,450	1,450	1,450	1,550	1,500
ND	27	27	27	16	20
OH	210	175	180	175	175
OK	465	550	490	630	580
OR	4.0	5.0	6.0	3.0	4.0
PA	175	155	155	150	195
RI	0.1	0.1	0.2	0.3	0.3
SC	50	46	60	80	80
SD	265	210	200	195	230
TN	45	50	35	34	36
TX	115	160	245	235	165
UT	70	110	70	75	100
VT	0.6	0.3	0.3	0.4	0.5
VA	76	69	85	90	75
WA	6.0	5.0	4.0	4.0	4.0
WV	3.0	2.0	3.0	3.0	2.0
WI	130	100	110	90	90
WY	23	17	15	18	19
US	10,167	9,684	9,663	9,986	10,103

<sup>1</sup> May not add due to rounding.

**Hogs and Pigs: Total Inventory Number by State  
and United States, March 1, 1998-2002**

State	1998	1999	2000	2001	2002
	<i>1,000 Head</i>	<i>1,000 Head</i>	<i>1,000 Head</i>	<i>1,000 Head</i>	<i>1,000 Head</i>
AR	810	735	690	650	590
CO	800	840	850	760	790
IL	4,700	4,400	4,050	4,050	4,200
IN	4,050	3,850	3,150	3,150	3,200
IA	14,100	14,800	14,800	14,400	15,100
KS	1,500	1,530	1,400	1,510	1,600
MI	1,000	990	960	900	960
MN	5,700	5,600	5,400	5,800	5,900
MO	3,400	3,100	3,000	2,950	2,900
NE	3,450	3,300	3,000	2,900	3,000
NC	9,500	9,500	9,400	9,300	9,800
OH	1,650	1,650	1,430	1,450	1,470
OK	1,770	2,050	2,190	2,240	2,290
PA	1,100	1,100	990	1,030	1,090
SD	1,250	1,320	1,230	1,270	1,270
TX	560	760	860	900	910
WI	730	670	570	590	500
Oth Sts <sup>1</sup>	4,093	3,994	3,805	3,696	3,686
US	60,163	60,189	57,775	57,546	59,256

<sup>1</sup> Individual State estimates not available for the 33 other States.

**Hogs and Pigs: Breeding Inventory Number by State  
and United States, March 1, 1998-2002**

State	1998	1999	2000	2001	2002
	<i>1,000 Head</i>	<i>1,000 Head</i>	<i>1,000 Head</i>	<i>1,000 Head</i>	<i>1,000 Head</i>
AR	110	110	110	105	105
CO	160	190	205	180	180
IL	550	470	430	440	450
IN	470	420	350	360	340
IA	1,300	1,220	1,160	1,120	1,120
KS	195	165	145	160	170
MI	130	110	120	120	120
MN	630	590	570	590	570
MO	440	400	380	375	365
NE	430	420	380	360	390
NC	1,050	1,000	1,000	1,000	1,000
OH	210	195	160	165	165
OK	260	290	310	340	330
PA	120	120	120	120	130
SD	150	130	125	135	150
TX	70	90	80	90	100
WI	105	85	65	80	60
Oth Sts <sup>1</sup>	562	522	479	484	485
US	6,942	6,527	6,189	6,224	6,230

<sup>1</sup> Individual State estimates not available for the 33 other States.

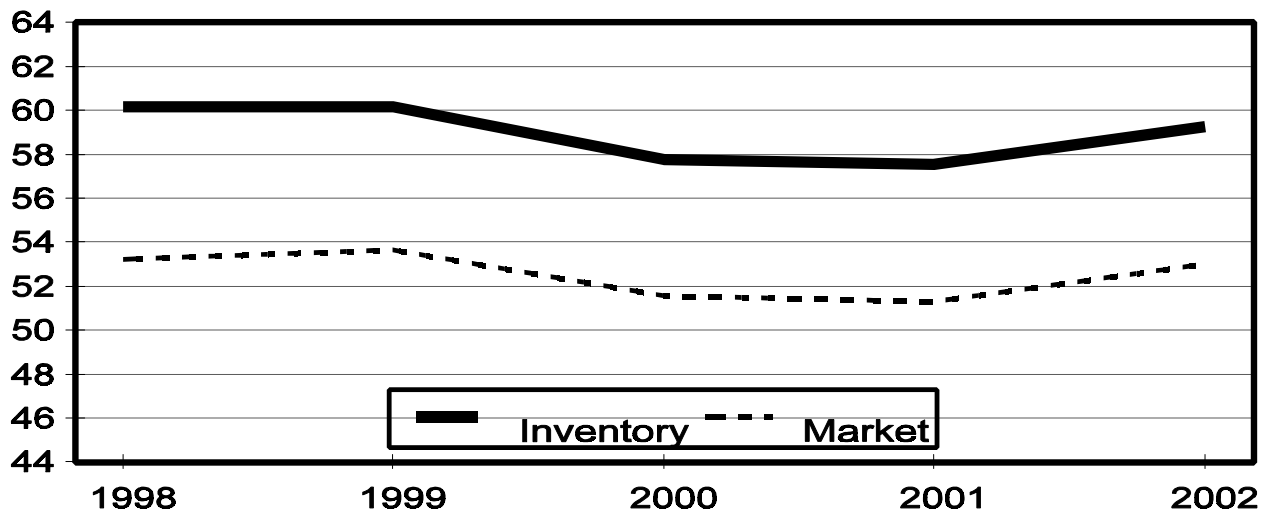
**Hogs and Pigs: Market Inventory Number by State  
and United States, March 1, 1998-2002**

State	1998	1999	2000	2001	2002
	<i>1,000 Head</i>	<i>1,000 Head</i>	<i>1,000 Head</i>	<i>1,000 Head</i>	<i>1,000 Head</i>
AR	700	625	580	545	485
CO	640	650	645	580	610
IL	4,150	3,930	3,620	3,610	3,750
IN	3,580	3,430	2,800	2,790	2,860
IA	12,800	13,580	13,640	13,280	13,980
KS	1,305	1,365	1,255	1,350	1,430
MI	870	880	840	780	840
MN	5,070	5,010	4,830	5,210	5,330
MO	2,960	2,700	2,620	2,575	2,535
NE	3,020	2,880	2,620	2,540	2,610
NC	8,450	8,500	8,400	8,300	8,800
OH	1,440	1,455	1,270	1,285	1,305
OK	1,510	1,760	1,880	1,900	1,960
PA	980	980	870	910	960
SD	1,100	1,190	1,105	1,135	1,120
TX	490	670	780	810	810
WI	625	585	505	510	440
Oth Sts <sup>1</sup>	3,530	3,472	3,327	3,212	3,201
US	53,220	53,662	51,587	51,322	53,026

<sup>1</sup> Individual State estimates not available for the 33 other States.

## March 1 Hog Inventory & Market Hogs United States

Million Head



**Hogs and Pigs: Market Inventory, Under 60 Pounds by State  
and United States, March 1, 1998-2002 <sup>1</sup>**

State	1998	1999	2000	2001	2002
	<i>1,000 Head</i>	<i>1,000 Head</i>	<i>1,000 Head</i>	<i>1,000 Head</i>	<i>1,000 Head</i>
AR	220	220	220	195	250
CO	335	335	370	310	330
IL	1,510	1,410	1,260	1,280	1,330
IN	1,370	1,330	1,100	1,010	1,040
IA	4,200	4,380	4,310	3,980	4,360
KS	540	515	510	460	490
MI	290	280	295	310	310
MN	1,960	1,960	1,910	2,020	2,120
MO	1,370	1,130	1,140	1,165	1,155
NE	1,220	1,140	1,030	980	1,070
NC	3,350	3,400	3,400	3,350	3,450
OH	640	580	535	540	545
OK	610	770	840	840	860
PA	355	340	325	335	345
SD	390	410	370	390	375
TX	180	295	245	265	265
WI	250	210	195	190	165
Oth Sts <sup>2</sup>	1,402	1,273	1,162	1,134	1,100
US	20,192	19,978	19,217	18,754	19,560

<sup>1</sup> Weight groups may not add to Market due to rounding.

<sup>2</sup> Individual State estimates not available for the 33 other States.

**Hogs and Pigs: Market Inventory, 60-119 Pounds by State  
and United States, March 1, 1998-2002 <sup>1</sup>**

State	1998	1999	2000	2001	2002
	<i>1,000 Head</i>	<i>1,000 Head</i>	<i>1,000 Head</i>	<i>1,000 Head</i>	<i>1,000 Head</i>
AR	175	155	135	130	65
CO	110	105	90	75	95
IL	980	900	880	870	940
IN	900	790	650	670	720
IA	3,400	3,480	3,590	3,600	3,800
KS	250	280	245	275	270
MI	220	225	215	185	215
MN	1,240	1,230	1,150	1,330	1,360
MO	640	720	680	600	570
NE	750	750	630	660	680
NC	1,930	1,950	1,950	1,800	2,000
OH	310	355	290	305	310
OK	260	300	300	320	310
PA	260	250	225	240	255
SD	280	310	280	300	295
TX	105	135	165	170	175
WI	145	135	110	110	105
Oth Sts <sup>2</sup>	836	828	823	790	773
US	12,791	12,898	12,408	12,430	12,938

<sup>1</sup> Weight groups may not add to Market due to rounding.

<sup>2</sup> Individual State estimates not available for the 33 other States.



**Hogs and Pigs: Market Inventory, 120-179 Pounds by State  
and United States, March 1, 1998-2002 <sup>1</sup>**

State	1998	1999	2000	2001	2002
	<i>1,000 Head</i>	<i>1,000 Head</i>	<i>1,000 Head</i>	<i>1,000 Head</i>	<i>1,000 Head</i>
AR	155	135	125	120	80
CO	100	100	90	85	70
IL	930	880	820	830	820
IN	700	710	550	560	580
IA	2,750	2,970	2,970	3,070	3,220
KS	235	255	230	245	290
MI	195	190	170	160	165
MN	1,020	990	960	1,090	1,060
MO	540	510	510	500	500
NE	570	550	550	510	500
NC	1,670	1,750	1,650	1,700	1,850
OH	300	310	270	280	290
OK	210	240	250	260	280
PA	220	210	180	185	200
SD	240	240	250	245	265
TX	100	110	170	160	165
WI	120	130	100	110	90
Oth Sts <sup>2</sup>	719	714	705	690	723
US	10,774	10,994	10,550	10,800	11,148

<sup>1</sup> Weight groups may not add to Market due to rounding.

<sup>2</sup> Individual State estimates not available for the 33 other States.

**Hogs and Pigs: Market Inventory, 180 Pounds and Over by State  
and United States, March 1, 1998-2002 <sup>1</sup>**

State	1998	1999	2000	2001	2002
	<i>1,000 Head</i>	<i>1,000 Head</i>	<i>1,000 Head</i>	<i>1,000 Head</i>	<i>1,000 Head</i>
AR	150	115	100	100	90
CO	95	110	95	110	115
IL	730	740	660	630	660
IN	610	600	500	550	520
IA	2,450	2,750	2,770	2,630	2,600
KS	280	315	270	370	380
MI	165	185	160	125	150
MN	850	830	810	770	790
MO	410	340	290	310	310
NE	480	440	410	390	360
NC	1,500	1,400	1,400	1,450	1,500
OH	190	210	175	160	160
OK	430	450	490	480	510
PA	145	180	140	150	160
SD	190	230	205	200	185
TX	105	130	200	215	205
WI	110	110	100	100	80
Oth Sts <sup>2</sup>	574	656	636	598	605
US	9,464	9,791	9,411	9,338	9,380

<sup>1</sup> Weight groups may not add to Market due to rounding.

<sup>2</sup> Individual State estimates not available for the 33 other States.

**Hogs and Pigs: Total Inventory Number by State  
and United States, June 1, 1998-2002**

State	1998	1999	2000	2001	2002
	<i>1,000 Head</i>	<i>1,000 Head</i>	<i>1,000 Head</i>	<i>1,000 Head</i>	<i>1,000 Head</i>
AR	790	725	690	650	595
CO	900	900	890	760	760
IL	5,000	4,350	4,150	4,100	4,300
IN	4,200	3,600	3,250	3,150	3,200
IA	14,800	15,500	15,400	14,900	15,600
KS	1,470	1,520	1,390	1,530	1,560
MI	1,130	1,100	990	920	920
MN	5,900	5,600	5,700	5,800	6,000
MO	3,300	3,200	3,000	3,000	3,000
NE	3,450	3,200	2,900	2,900	2,950
NC	9,800	9,500	9,600	9,700	9,900
OH	1,700	1,650	1,400	1,460	1,500
OK	1,870	2,180	2,270	2,190	2,450
PA	1,100	1,090	1,050	1,030	1,070
SD	1,350	1,330	1,230	1,270	1,270
TX	560	770	870	860	990
WI	720	660	580	570	530
Oth Sts <sup>1</sup>	4,173	4,019	3,750	3,735	3,796
US	62,213	60,894	59,110	58,525	60,391

<sup>1</sup> Individual State estimates not available for the 33 other States.

**Hogs and Pigs: Breeding Inventory Number by State  
and United States, June 1, 1998-2002**

State	1998	1999	2000	2001	2002
	<i>1,000 Head</i>	<i>1,000 Head</i>	<i>1,000 Head</i>	<i>1,000 Head</i>	<i>1,000 Head</i>
AR	110	110	110	105	100
CO	180	200	210	170	150
IL	580	460	430	420	450
IN	470	410	350	350	330
IA	1,300	1,200	1,160	1,120	1,130
KS	190	160	150	165	165
MI	130	120	110	110	110
MN	640	600	580	590	580
MO	410	410	380	385	380
NE	430	410	370	360	395
NC	1,050	1,000	1,000	1,000	1,000
OH	220	200	160	160	170
OK	260	310	340	330	320
PA	120	125	125	120	130
SD	140	130	125	140	140
TX	65	85	85	95	105
WI	100	80	65	75	65
Oth Sts <sup>1</sup>	563	505	483	483	488
US	6,958	6,515	6,233	6,178	6,208

<sup>1</sup> Individual State estimates not available for the 33 other States.

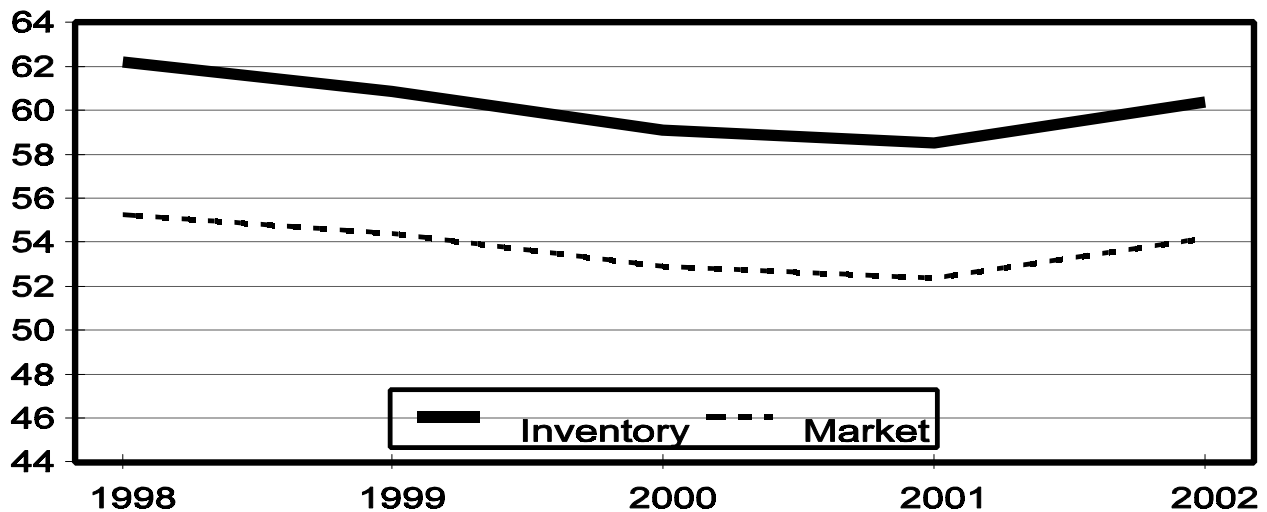
**Hogs and Pigs: Market Inventory Number by State  
and United States, June 1, 1998-2002**

State	1998	1999	2000	2001	2002
	<i>1,000 Head</i>	<i>1,000 Head</i>	<i>1,000 Head</i>	<i>1,000 Head</i>	<i>1,000 Head</i>
AR	680	615	580	545	495
CO	720	700	680	590	610
IL	4,420	3,890	3,720	3,680	3,850
IN	3,730	3,190	2,900	2,800	2,870
IA	13,500	14,300	14,240	13,780	14,470
KS	1,280	1,360	1,240	1,365	1,395
MI	1,000	980	880	810	810
MN	5,260	5,000	5,120	5,210	5,420
MO	2,890	2,790	2,620	2,615	2,620
NE	3,020	2,790	2,530	2,540	2,555
NC	8,750	8,500	8,600	8,700	8,900
OH	1,480	1,450	1,240	1,300	1,330
OK	1,610	1,870	1,930	1,860	2,130
PA	980	965	925	910	940
SD	1,210	1,200	1,105	1,130	1,130
TX	495	685	785	765	885
WI	620	580	515	495	465
Oth Sts <sup>1</sup>	3,609	3,514	3,268	3,252	3,308
US	55,254	54,379	52,878	52,347	54,183

<sup>1</sup> Individual State estimates not available for the 33 other States.

## June 1 Hog Inventory & Market Hogs United States

Million Head



**Hogs and Pigs: Market Inventory, Under 60 Pounds by State  
and United States, June 1, 1998-2002 <sup>1</sup>**

State	1998	1999	2000	2001	2002
	<i>1,000 Head</i>	<i>1,000 Head</i>	<i>1,000 Head</i>	<i>1,000 Head</i>	<i>1,000 Head</i>
AR	250	220	210	190	255
CO	370	360	390	335	305
IL	1,750	1,460	1,360	1,320	1,400
IN	1,380	1,230	1,140	1,040	1,040
IA	4,630	4,550	4,480	4,350	4,570
KS	525	555	500	475	510
MI	450	430	390	315	310
MN	2,050	2,000	2,060	2,140	2,110
MO	1,450	1,240	1,150	1,305	1,200
NE	1,240	1,130	1,010	1,050	1,050
NC	3,450	3,400	3,500	3,600	3,600
OH	660	590	520	530	530
OK	610	790	840	850	920
PA	355	360	340	360	345
SD	455	430	390	430	405
TX	180	250	230	270	290
WI	245	215	195	195	165
Oth Sts <sup>2</sup>	1,432	1,322	1,202	1,145	1,221
US	21,482	20,532	19,907	19,900	20,226

<sup>1</sup> Weight groups may not add to Market due to rounding.

<sup>2</sup> Individual State estimates not available for the 33 other States.

**Hogs and Pigs: Market Inventory, 60-119 Pounds by State  
and United States, June 1, 1998-2002 <sup>1</sup>**

State	1998	1999	2000	2001	2002
	<i>1,000 Head</i>	<i>1,000 Head</i>	<i>1,000 Head</i>	<i>1,000 Head</i>	<i>1,000 Head</i>
AR	165	150	135	140	65
CO	120	115	90	65	95
IL	1,080	950	920	950	970
IN	980	810	670	680	740
IA	3,710	3,950	4,060	3,800	4,050
KS	285	290	245	295	310
MI	220	220	200	215	205
MN	1,330	1,200	1,250	1,300	1,400
MO	590	730	660	520	580
NE	790	720	640	650	660
NC	2,130	2,000	2,000	2,110	2,150
OH	350	375	290	325	335
OK	300	360	400	310	300
PA	260	250	250	235	245
SD	295	280	310	280	300
TX	105	135	200	150	235
WI	160	130	120	115	120
Oth Sts <sup>2</sup>	841	835	806	805	779
US	13,711	13,500	13,246	12,945	13,539

<sup>1</sup> Weight groups may not add to Market due to rounding.

<sup>2</sup> Individual State estimates not available for the 33 other States.

**Hogs and Pigs: Market Inventory, 120-179 Pounds by State  
and United States, June 1, 1998-2002 <sup>1</sup>**

State	1998	1999	2000	2001	2002
	<i>1,000 Head</i>	<i>1,000 Head</i>	<i>1,000 Head</i>	<i>1,000 Head</i>	<i>1,000 Head</i>
AR	145	135	130	115	80
CO	115	115	90	75	95
IL	900	840	820	760	800
IN	780	650	570	540	570
IA	2,860	3,050	3,080	3,080	3,250
KS	240	255	235	240	245
MI	190	200	160	155	155
MN	1,050	980	1,020	1,050	1,100
MO	510	520	510	480	500
NE	560	540	500	490	470
NC	1,770	1,750	1,700	1,620	1,700
OH	290	305	270	280	290
OK	220	270	230	270	295
PA	215	195	195	175	180
SD	255	270	240	245	250
TX	110	140	160	150	160
WI	120	130	110	100	95
Oth Sts <sup>2</sup>	754	730	688	706	671
US	11,084	11,075	10,708	10,531	10,906

<sup>1</sup> Weight groups may not add to Market due to rounding.

<sup>2</sup> Individual State estimates not available for the 33 other States.

**Hogs and Pigs: Market Inventory, 180 Pounds and Over by State  
and United States, June 1, 1998-2002 <sup>1</sup>**

State	1998	1999	2000	2001	2002
	<i>1,000 Head</i>	<i>1,000 Head</i>	<i>1,000 Head</i>	<i>1,000 Head</i>	<i>1,000 Head</i>
AR	120	110	105	100	95
CO	115	110	110	115	115
IL	690	640	620	650	680
IN	590	500	520	540	520
IA	2,300	2,750	2,620	2,550	2,600
KS	230	260	260	355	330
MI	140	130	130	125	140
MN	830	820	790	720	810
MO	340	300	300	310	340
NE	430	400	380	350	375
NC	1,400	1,350	1,400	1,370	1,450
OH	180	180	160	165	175
OK	480	450	460	430	615
PA	150	160	140	140	170
SD	205	220	165	175	175
TX	100	160	195	195	200
WI	95	105	90	85	85
Oth Sts <sup>2</sup>	583	626	571	596	637
US	8,978	9,271	9,016	8,971	9,512

<sup>1</sup> Weight groups may not add to Market due to rounding.

<sup>2</sup> Individual State estimates not available for the 33 other States.

**Hogs and Pigs: Total Inventory Number by State  
and United States, September 1, 1998-2002**

State	1998	1999	2000	2001	2002
	<i>1,000 Head</i>	<i>1,000 Head</i>	<i>1,000 Head</i>	<i>1,000 Head</i>	<i>1,000 Head</i>
AR	800	720	680	655	545
CO	920	950	890	780	760
IL	4,850	4,200	4,050	4,200	4,250
IN	4,100	3,550	3,300	3,150	3,200
IA	15,500	15,600	15,300	15,100	15,600
KS	1,550	1,480	1,530	1,600	1,570
MI	1,070	1,030	1,020	970	940
MN	6,000	5,500	5,600	5,900	6,200
MO	3,350	3,100	3,000	3,000	2,900
NE	3,400	2,950	3,000	2,950	2,900
NC	10,300	9,900	9,700	9,900	10,200
OH	1,750	1,590	1,420	1,470	1,500
OK	1,980	2,330	2,330	2,370	2,490
PA	1,100	1,050	1,040	1,080	1,080
SD	1,300	1,370	1,280	1,280	1,320
TX	600	820	930	890	1,000
WI	700	600	590	560	480
Oth Sts <sup>1</sup>	4,218	4,034	3,828	3,844	3,818
US	63,488	60,774	59,488	59,699	60,753

<sup>1</sup> Individual State estimates not available for the 33 other States.

**Hogs and Pigs: Breeding Inventory Number by State  
and United States, September 1, 1998-2002**

State	1998	1999	2000	2001	2002
	<i>1,000 Head</i>	<i>1,000 Head</i>	<i>1,000 Head</i>	<i>1,000 Head</i>	<i>1,000 Head</i>
AR	110	110	105	100	90
CO	190	200	205	175	145
IL	540	430	420	420	430
IN	450	400	360	330	330
IA	1,290	1,150	1,160	1,120	1,100
KS	180	155	155	165	160
MI	120	110	110	110	120
MN	650	590	580	590	580
MO	420	390	380	380	350
NE	420	360	380	360	360
NC	1,050	1,000	1,000	1,000	1,000
OH	210	190	160	160	160
OK	290	330	340	330	330
PA	115	115	115	125	125
SD	130	125	130	140	140
TX	65	80	85	95	100
WI	95	75	65	75	55
Oth Sts <sup>1</sup>	550	491	495	480	476
US	6,875	6,301	6,245	6,155	6,051

<sup>1</sup> Individual State estimates not available for the 33 other States.

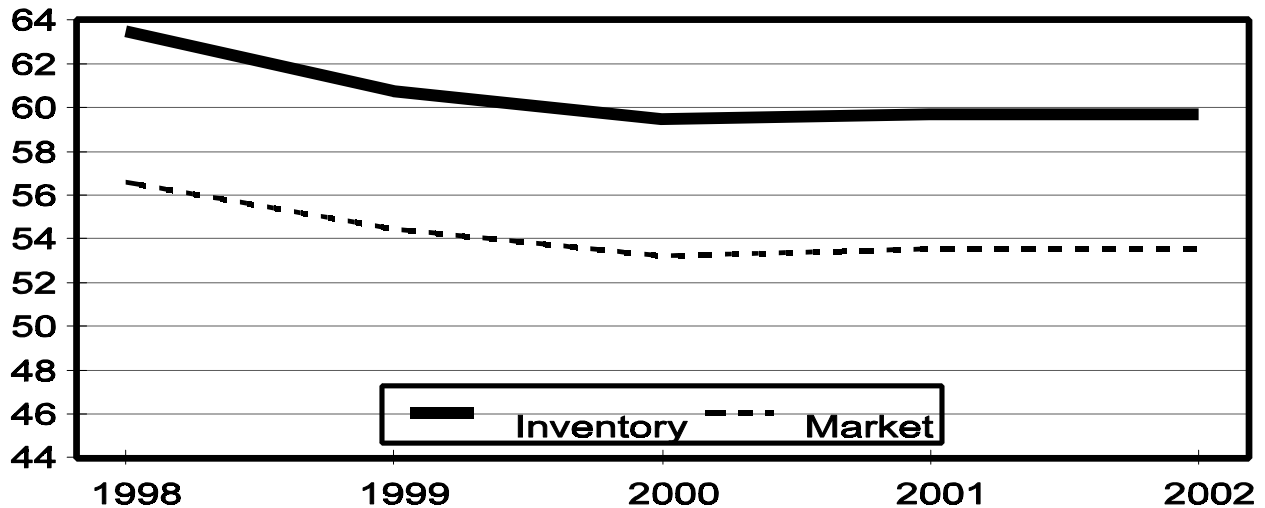
**Hogs and Pigs: Market Inventory Number by State  
and United States, September 1, 1998-2002**

State	1998	1999	2000	2001	2002
	<i>1,000 Head</i>	<i>1,000 Head</i>	<i>1,000 Head</i>	<i>1,000 Head</i>	<i>1,000 Head</i>
AR	690	610	575	555	455
CO	730	750	685	605	615
IL	4,310	3,770	3,630	3,780	3,820
IN	3,650	3,150	2,940	2,820	2,870
IA	14,210	14,450	14,140	13,980	14,500
KS	1,370	1,325	1,375	1,435	1,410
MI	950	920	910	860	820
MN	5,350	4,910	5,020	5,310	5,620
MO	2,930	2,710	2,620	2,620	2,550
NE	2,980	2,590	2,620	2,590	2,540
NC	9,250	8,900	8,700	8,900	9,200
OH	1,540	1,400	1,260	1,310	1,340
OK	1,690	2,000	1,990	2,040	2,160
PA	985	935	925	955	955
SD	1,170	1,245	1,150	1,140	1,180
TX	535	740	845	795	900
WI	605	525	525	485	425
Oth Sts <sup>1</sup>	3,667	3,543	3,334	3,364	3,342
US	56,612	54,473	53,244	53,544	54,702

<sup>1</sup> Individual State estimates not available for the 33 other States.

## September 1 Hog Inventory & Market Hogs United States

Million Head



**Hogs and Pigs: Market Inventory, Under 60 Pounds by State  
and United States, September 1, 1998-2002 <sup>1</sup>**

State	1998	1999	2000	2001	2002
	<i>1,000 Head</i>	<i>1,000 Head</i>	<i>1,000 Head</i>	<i>1,000 Head</i>	<i>1,000 Head</i>
AR	230	225	220	245	225
CO	385	405	400	340	310
IL	1,540	1,390	1,260	1,380	1,390
IN	1,330	1,240	1,130	1,050	1,050
IA	4,560	4,660	4,420	4,370	4,490
KS	575	555	540	470	485
MI	300	310	360	330	315
MN	2,110	1,960	2,080	2,190	2,170
MO	1,300	1,110	1,120	1,160	1,180
NE	1,300	1,070	1,100	1,030	1,000
NC	3,620	3,400	3,450	3,500	3,600
OH	680	580	550	545	540
OK	650	830	925	880	890
PA	350	330	345	375	340
SD	380	415	420	395	400
TX	200	270	240	295	265
WI	240	215	195	195	160
Oth Sts <sup>2</sup>	1,439	1,278	1,200	1,173	1,228
US	21,189	20,243	19,955	19,923	20,038

<sup>1</sup> Weight groups may not add to Market due to rounding.

<sup>2</sup> Individual State estimates not available for the 33 other States.

**Hogs and Pigs: Market Inventory, 60-119 Pounds by State  
and United States, September 1, 1998-2002 <sup>1</sup>**

State	1998	1999	2000	2001	2002
	<i>1,000 Head</i>	<i>1,000 Head</i>	<i>1,000 Head</i>	<i>1,000 Head</i>	<i>1,000 Head</i>
AR	180	140	135	110	65
CO	125	125	80	80	95
IL	1,050	930	900	930	960
IN	880	760	710	700	720
IA	4,050	3,940	3,900	3,910	4,040
KS	290	260	280	290	260
MI	250	260	230	225	210
MN	1,380	1,180	1,220	1,320	1,450
MO	680	720	690	560	510
NE	720	600	650	670	650
NC	2,120	2,100	2,000	2,200	2,300
OH	360	350	285	325	320
OK	300	370	325	340	370
PA	255	240	240	250	250
SD	280	320	290	290	320
TX	110	155	175	180	240
WI	140	115	120	110	100
Oth Sts <sup>2</sup>	862	848	824	871	772
US	14,032	13,413	13,054	13,361	13,632

<sup>1</sup> Weight groups may not add to Market due to rounding.

<sup>2</sup> Individual State estimates not available for the 33 other States.



**Hogs and Pigs: Market Inventory, 120-179 Pounds by State  
and United States, September 1, 1998-2002 <sup>1</sup>**

State	1998	1999	2000	2001	2002
	<i>1,000 Head</i>	<i>1,000 Head</i>	<i>1,000 Head</i>	<i>1,000 Head</i>	<i>1,000 Head</i>
AR	150	135	120	100	75
CO	110	110	80	75	90
IL	930	820	820	790	790
IN	790	620	570	550	570
IA	3,000	3,100	3,140	3,100	3,160
KS	235	230	255	275	250
MI	195	190	180	175	160
MN	1,060	970	950	1,060	1,200
MO	550	530	520	520	470
NE	540	520	490	510	500
NC	1,920	1,850	1,750	1,800	1,800
OH	310	290	255	270	290
OK	270	300	245	235	350
PA	215	200	190	180	190
SD	290	285	255	260	270
TX	110	130	180	145	195
WI	120	100	110	90	75
Oth Sts <sup>2</sup>	760	748	705	714	678
US	11,555	11,128	10,815	10,849	11,113

<sup>1</sup> Weight groups may not add to Market due to rounding.

<sup>2</sup> Individual State estimates not available for the 33 other States.

**Hogs and Pigs: Market Inventory, 180 Pounds and Over by State  
and United States, September 1, 1998-2002 <sup>1</sup>**

State	1998	1999	2000	2001	2002
	<i>1,000 Head</i>	<i>1,000 Head</i>	<i>1,000 Head</i>	<i>1,000 Head</i>	<i>1,000 Head</i>
AR	130	110	100	100	90
CO	110	110	125	110	120
IL	790	630	650	680	680
IN	650	530	530	520	530
IA	2,600	2,750	2,680	2,600	2,810
KS	270	280	300	400	415
MI	205	160	140	130	135
MN	800	800	770	740	800
MO	400	350	290	380	390
NE	420	400	380	380	390
NC	1,590	1,550	1,500	1,400	1,500
OH	190	180	170	170	190
OK	470	500	495	585	550
PA	165	165	150	150	175
SD	220	225	185	195	190
TX	115	185	250	175	200
WI	105	95	100	90	90
Oth Sts <sup>2</sup>	607	668	604	606	664
US	9,837	9,688	9,419	9,411	9,919

<sup>1</sup> Weight groups may not add to Market due to rounding.

<sup>2</sup> Individual State estimates not available for the 33 other States.

**Farrowings: Number of Sows by State and United States, Dec-Feb 1998-2002**

State	December <sup>1</sup> - February				
	1998	1999	2000	2001	2002
	<i>1,000 Head</i>	<i>1,000 Head</i>	<i>1,000 Head</i>	<i>1,000 Head</i>	<i>1,000 Head</i>
AR	56	56	56	53	52
CO	62	73	86	76	79
IL	225	210	205	195	210
IN	195	185	145	155	155
IA	520	480	455	430	410
KS	90	83	74	73	79
MI	40	37	44	46	50
MN	260	255	245	260	260
MO	195	190	175	170	170
NE	165	165	160	140	180
NC	515	530	530	530	540
OH	89	86	75	73	74
OK	117	150	165	165	170
PA	47	47	46	51	53
SD	58	50	58	62	70
TX	29	37	36	37	43
WI	42	37	31	34	28
Oth Sts <sup>2</sup>	224	220	212	198	212
US	2,929	2,891	2,798	2,748	2,835

<sup>1</sup> December preceding year.

<sup>2</sup> Individual State estimates not available for the 33 other States.

**Farrowings: Pigs per Litter by State and United States, Dec-Feb 1998-2002**

State	December <sup>1</sup> - February				
	1998	1999	2000	2001	2002
	<i>Number</i>	<i>Number</i>	<i>Number</i>	<i>Number</i>	<i>Number</i>
AR	8.50	8.40	8.55	8.90	9.20
CO	8.40	8.30	8.50	8.50	8.40
IL	8.60	8.70	8.70	8.50	8.75
IN	8.60	8.60	8.70	8.80	8.70
IA	8.70	8.70	8.85	8.40	8.60
KS	9.00	8.70	8.70	8.55	8.40
MI	8.80	9.00	8.80	8.75	9.00
MN	8.95	8.95	8.80	8.95	8.80
MO	8.80	8.60	8.85	8.80	9.00
NE	8.50	8.55	8.75	8.80	8.80
NC	8.90	8.85	8.75	8.85	8.95
OH	8.50	8.50	8.70	8.50	8.95
OK	8.90	9.20	8.85	9.25	8.75
PA	8.60	8.70	8.70	8.80	8.80
SD	8.60	8.90	8.90	8.80	8.90
TX	8.10	9.40	9.50	8.90	9.00
WI	8.20	8.35	8.75	8.25	8.45
Oth Sts <sup>2</sup>	8.38	8.54	8.60	8.55	8.43
US	8.70	8.73	8.76	8.72	8.77

<sup>1</sup> December preceding year.

<sup>2</sup> Individual State estimates not available for the 33 other States.

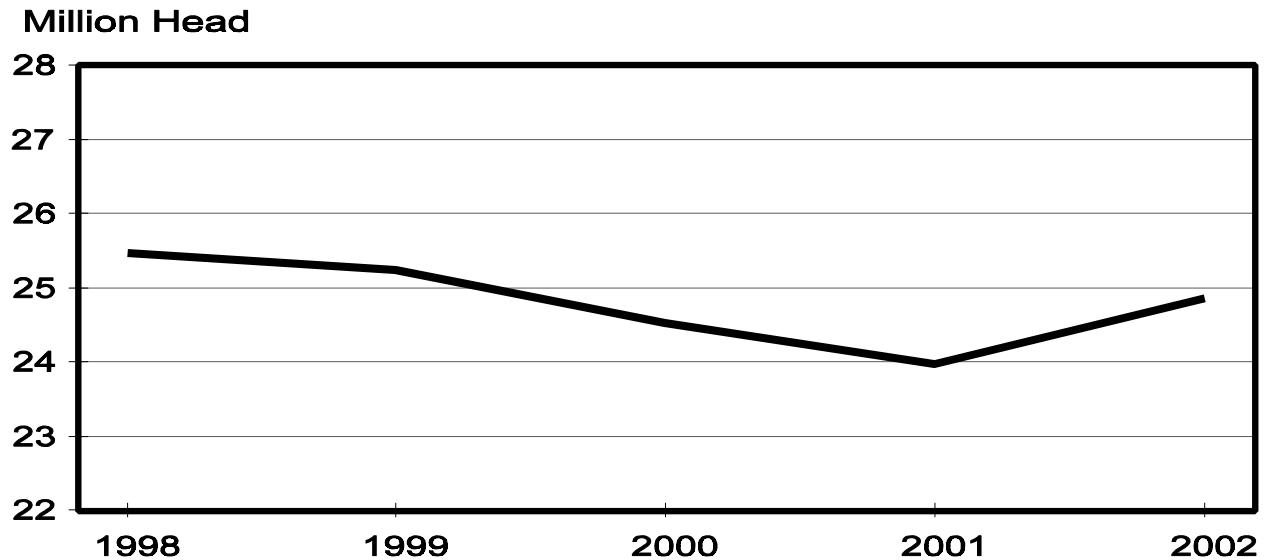
**Farrowings: Pig Crop by State and United States, Dec-Feb 1998-2002**

State	December <sup>1</sup> - February				
	1998	1999	2000	2001	2002
	<i>1,000 Head</i>	<i>1,000 Head</i>	<i>1,000 Head</i>	<i>1,000 Head</i>	<i>1,000 Head</i>
AR	476	470	479	472	478
CO	521	606	731	646	664
IL	1,935	1,827	1,784	1,658	1,838
IN	1,677	1,591	1,262	1,364	1,349
IA	4,524	4,176	4,027	3,612	3,526
KS	810	722	644	624	664
MI	352	333	387	403	450
MN	2,327	2,282	2,156	2,327	2,288
MO	1,716	1,634	1,549	1,496	1,530
NE	1,403	1,411	1,400	1,232	1,584
NC	4,584	4,691	4,638	4,691	4,833
OH	757	731	653	621	662
OK	1,041	1,380	1,460	1,526	1,488
PA	404	409	400	449	466
SD	499	445	516	546	623
TX	235	348	342	329	387
WI	344	309	271	281	237
Oth Sts <sup>2</sup>	1,875	1,880	1,822	1,693	1,790
US	25,480	25,245	24,521	23,970	24,857

<sup>1</sup> December preceding year.

<sup>2</sup> Individual State estimates not available for the 33 other States.

## December-February Pig Crop 1998-2002 United States



**Farrowings: Number of Sows by State and United States, Mar-May 1998-2002**

State	March - May				
	1998	1999	2000	2001	2002
	<i>1,000 Head</i>	<i>1,000 Head</i>	<i>1,000 Head</i>	<i>1,000 Head</i>	<i>1,000 Head</i>
AR	56	55	55	54	52
CO	73	79	88	79	76
IL	255	210	210	210	220
IN	195	175	145	155	155
IA	550	520	490	450	470
KS	90	85	76	77	82
MI	53	55	50	50	49
MN	275	265	260	270	270
MO	195	195	180	185	180
NE	170	165	155	160	185
NC	540	530	540	540	550
OH	90	85	75	73	75
OK	129	160	165	165	165
PA	48	47	48	52	53
SD	65	60	62	66	69
TX	28	37	37	40	45
WI	43	36	30	33	29
Oth Sts <sup>1</sup>	231	227	219	211	216
US	3,086	2,986	2,885	2,870	2,941

<sup>1</sup> Individual State estimates not available for the 33 other States.

**Farrowings: Pigs per Litter by State and United States, Mar-May 1998-2002**

State	March - May				
	1998	1999	2000	2001	2002
	<i>Number</i>	<i>Number</i>	<i>Number</i>	<i>Number</i>	<i>Number</i>
AR	8.40	8.50	8.50	9.00	9.60
CO	8.70	8.50	8.40	8.30	8.50
IL	8.60	8.65	8.75	8.85	8.80
IN	8.70	8.70	8.85	8.90	8.80
IA	8.70	8.70	8.90	8.75	8.55
KS	8.90	9.10	8.90	8.65	8.75
MI	8.90	8.90	9.00	8.90	8.85
MN	8.90	8.95	9.00	9.05	8.95
MO	8.90	8.80	8.80	8.90	9.05
NE	8.40	8.60	8.85	8.80	9.00
NC	8.90	8.90	8.90	9.00	9.00
OH	8.70	8.80	8.90	8.70	8.95
OK	9.10	9.10	8.90	9.35	8.85
PA	8.70	8.80	8.80	8.90	8.70
SD	8.70	8.90	8.90	8.90	8.80
TX	9.00	9.50	9.50	8.80	8.90
WI	8.50	8.50	8.85	8.60	8.55
Oth Sts <sup>1</sup>	8.50	8.69	8.77	8.78	8.70
US	8.75	8.80	8.86	8.89	8.84

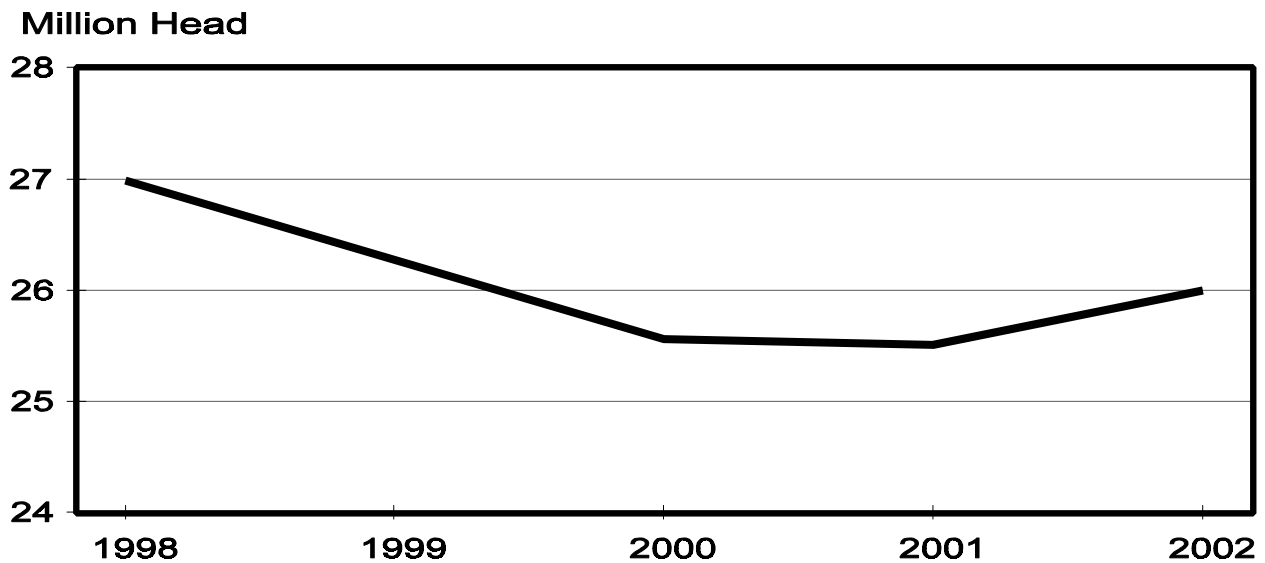
<sup>1</sup> Individual State estimates not available for the 33 other States.

**Farrowings: Pig Crop by State and United States, Mar-May 1998-2002 <sup>1</sup>**

State	March - May				
	1998	1999	2000	2001	2002
	<i>1,000 Head</i>	<i>1,000 Head</i>	<i>1,000 Head</i>	<i>1,000 Head</i>	<i>1,000 Head</i>
AR	470	468	468	486	499
CO	635	672	739	656	646
IL	2,193	1,817	1,838	1,859	1,936
IN	1,697	1,523	1,283	1,380	1,364
IA	4,785	4,524	4,361	3,938	4,019
KS	801	774	676	666	718
MI	472	490	450	445	434
MN	2,448	2,372	2,340	2,444	2,417
MO	1,736	1,716	1,584	1,647	1,629
NE	1,428	1,419	1,372	1,408	1,665
NC	4,806	4,717	4,806	4,860	4,950
OH	783	748	668	635	671
OK	1,174	1,456	1,469	1,543	1,460
PA	418	414	422	463	461
SD	566	534	552	587	607
TX	252	352	352	352	401
WI	366	306	266	284	248
Oth Sts <sup>1</sup>	1,959	1,969	1,919	1,854	1,876
US	26,989	26,271	25,565	25,507	26,001

<sup>1</sup> Individual State estimates not available for the 33 other States.

**March-May Pig Crop 1998-2002  
United States**



**Farrowings: Number of Sows by State and United States, Jun-Aug 1998-2002**

State	June - August				
	1998	1999	2000	2001	2002
	<i>1,000 Head</i>	<i>1,000 Head</i>	<i>1,000 Head</i>	<i>1,000 Head</i>	<i>1,000 Head</i>
AR	57	57	55	57	52
CO	78	93	90	79	75
IL	230	200	200	210	210
IN	190	170	155	150	150
IA	530	490	470	440	430
KS	92	82	84	78	82
MI	52	51	50	52	54
MN	280	265	260	265	265
MO	195	180	180	180	170
NE	170	150	160	155	175
NC	550	540	540	550	560
OH	90	85	75	75	78
OK	134	165	170	175	170
PA	48	44	49	54	53
SD	57	55	62	66	69
TX	27	39	43	44	50
WI	42	34	30	36	26
Oth Sts <sup>1</sup>	232	220	216	212	214
US	3,054	2,920	2,889	2,878	2,883

<sup>1</sup> Individual State estimates not available for the 33 other States.

**Farrowings: Pigs per Litter by State and United States, Jun-Aug 1998-2002**

State	June - August				
	1998	1999	2000	2001	2002
	<i>Number</i>	<i>Number</i>	<i>Number</i>	<i>Number</i>	<i>Number</i>
AR	8.50	8.50	9.25	9.30	9.55
CO	8.65	8.60	8.40	8.45	8.35
IL	8.60	8.60	8.70	8.80	8.90
IN	8.65	8.75	8.75	8.90	8.70
IA	8.75	9.00	8.80	8.60	8.80
KS	8.70	8.80	8.80	8.70	8.75
MI	8.90	9.00	8.90	9.10	9.05
MN	8.90	9.00	9.10	9.00	8.85
MO	8.70	8.80	8.80	9.00	9.05
NE	8.60	8.65	9.00	8.70	9.00
NC	8.80	9.00	8.80	9.10	9.10
OH	8.75	8.70	8.85	8.90	8.90
OK	9.10	9.00	8.90	9.40	9.05
PA	8.70	8.90	8.70	8.80	9.00
SD	8.70	9.00	9.00	8.85	9.05
TX	8.60	8.90	9.40	8.70	8.95
WI	8.35	8.60	8.90	8.15	8.35
Oth Sts <sup>1</sup>	8.43	8.65	8.76	8.78	8.80
US	8.72	8.86	8.84	8.89	8.92

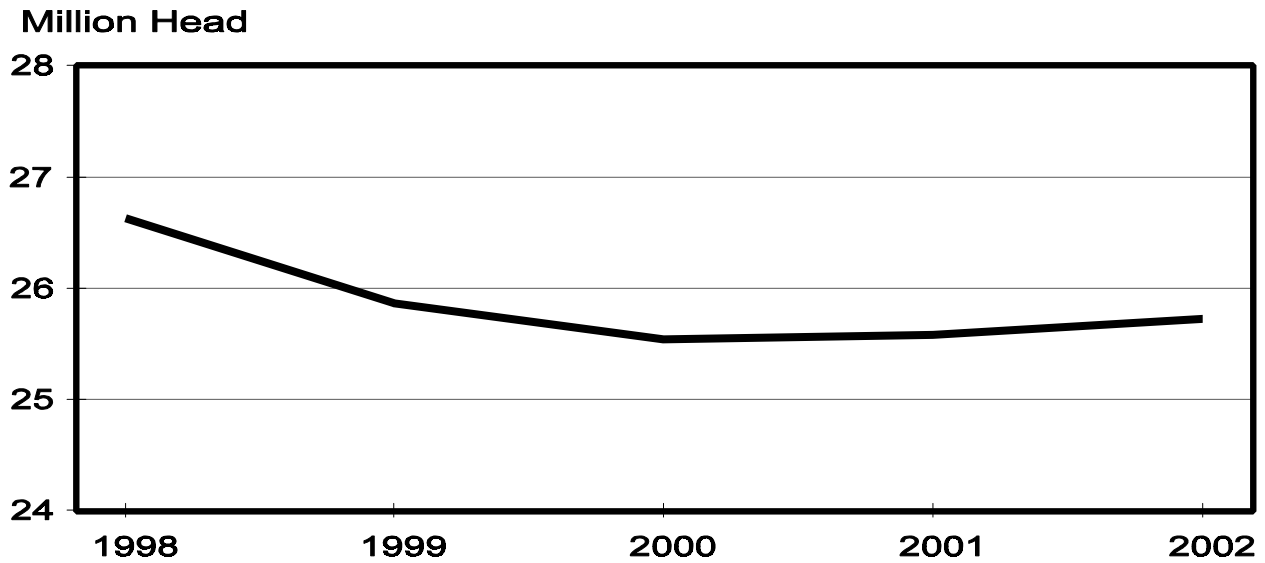
<sup>1</sup> Individual State estimates not available for the 33 other States.

**Farrowings: Pig Crop by State and United States, Jun-Aug 1998-2002**

State	June - August				
	1998	1999	2000	2001	2002
	<i>1,000 Head</i>	<i>1,000 Head</i>	<i>1,000 Head</i>	<i>1,000 Head</i>	<i>1,000 Head</i>
AR	485	485	509	530	497
CO	675	800	756	668	626
IL	1,978	1,720	1,740	1,848	1,869
IN	1,644	1,488	1,356	1,335	1,305
IA	4,638	4,410	4,136	3,784	3,784
KS	800	722	739	679	718
MI	463	459	445	473	489
MN	2,492	2,385	2,366	2,385	2,345
MO	1,697	1,584	1,584	1,620	1,539
NE	1,462	1,298	1,440	1,349	1,575
NC	4,840	4,860	4,752	5,005	5,096
OH	788	740	664	668	694
OK	1,219	1,485	1,513	1,645	1,539
PA	418	392	426	475	477
SD	496	495	558	584	624
TX	232	347	404	383	448
WI	351	292	267	293	217
Oth Sts <sup>1</sup>	1,956	1,901	1,891	1,863	1,883
US	26,634	25,863	25,546	25,587	25,725

<sup>1</sup> Individual State estimates not available for the 33 other States.

**June-August Pig Crop 1998-2002  
United States**



**Farrowings: Number of Sows by State and United States, Sep-Nov 1998-2002**

State	September - November				
	1998	1999	2000	2001	2002
	<i>1,000 Head</i>	<i>1,000 Head</i>	<i>1,000 Head</i>	<i>1,000 Head</i>	<i>1,000 Head</i>
AR	56	55	55	51	44
CO	73	87	86	82	75
IL	235	200	210	220	210
IN	195	155	165	155	145
IA	510	490	440	460	440
KS	90	78	81	81	79
MI	52	49	48	46	42
MN	265	245	270	265	275
MO	190	190	175	180	170
NE	175	160	150	165	180
NC	520	520	530	530	530
OH	90	74	74	74	73
OK	135	155	165	170	165
PA	46	46	51	55	53
SD	60	57	65	71	61
TX	32	38	38	41	46
WI	39	31	33	30	28
Oth Sts <sup>1</sup>	230	214	201	213	217
US	2,993	2,844	2,837	2,889	2,833

<sup>1</sup> Individual State estimates not available for the 33 other States.

**Farrowings: Pigs per Litter by State and United States, Sep-Nov 1998-2002**

State	September - November				
	1998	1999	2000	2001	2002
	<i>Number</i>	<i>Number</i>	<i>Number</i>	<i>Number</i>	<i>Number</i>
AR	8.50	8.50	9.00	9.50	9.80
CO	8.50	8.30	8.50	8.50	8.60
IL	8.60	8.60	8.70	8.80	8.85
IN	8.65	8.65	8.90	8.70	8.75
IA	8.70	8.90	8.85	8.70	8.50
KS	8.70	8.70	8.60	8.55	8.70
MI	8.50	9.00	9.05	9.15	9.10
MN	8.85	9.00	8.90	9.00	8.90
MO	8.60	8.70	8.75	8.90	8.95
NE	8.50	8.75	8.75	8.70	9.05
NC	8.65	8.75	8.85	9.00	9.00
OH	8.60	8.70	8.80	8.80	8.85
OK	9.10	9.00	9.35	9.10	9.10
PA	8.90	8.70	8.70	8.80	9.00
SD	8.60	8.90	8.90	8.95	9.00
TX	8.20	9.40	9.40	8.90	8.85
WI	8.25	8.70	8.55	8.45	8.70
Oth Sts <sup>1</sup>	8.53	8.68	8.78	8.66	8.71
US	8.66	8.78	8.85	8.85	8.86

<sup>1</sup> Individual State estimates not available for the 33 other States.

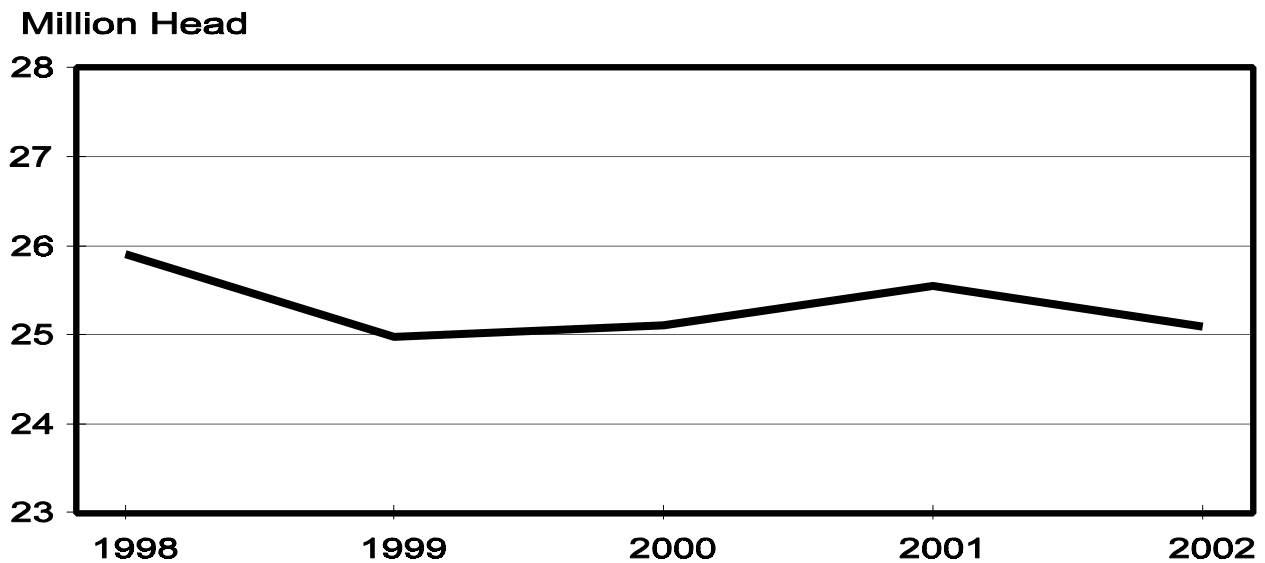


**Farrowings: Pig Crop by State and United States, Sep-Nov 1998-2002**

State	September - November				
	1998	1999	2000	2001	2002
	<i>1,000 Head</i>	<i>1,000 Head</i>	<i>1,000 Head</i>	<i>1,000 Head</i>	<i>1,000 Head</i>
AR	476	468	495	485	431
CO	621	722	731	697	645
IL	2,021	1,720	1,827	1,936	1,859
IN	1,687	1,341	1,469	1,349	1,269
IA	4,437	4,361	3,894	4,002	3,740
KS	783	679	697	693	687
MI	442	441	434	421	382
MN	2,345	2,205	2,403	2,385	2,448
MO	1,634	1,653	1,531	1,602	1,522
NE	1,488	1,400	1,313	1,436	1,629
NC	4,498	4,550	4,691	4,770	4,770
OH	774	644	651	651	646
OK	1,229	1,395	1,543	1,547	1,502
PA	409	400	444	484	477
SD	516	507	579	635	549
TX	262	357	357	365	407
WI	322	270	282	254	244
Oth Sts <sup>1</sup>	1,958	1,860	1,769	1,841	1,887
US	25,902	24,973	25,110	25,553	25,094

<sup>1</sup> Individual State estimates not available for the 33 other States.

## September-November Pig Crop 1998-2002 United States



**Annual Farrowings: Number of Sows, by State and United States,  
December-November 1998-2002<sup>1 2</sup>**

State	1998	1999	2000	2001	2002
	<i>1,000 Head</i>	<i>1,000 Head</i>	<i>1,000 Head</i>	<i>1,000 Head</i>	<i>1,000 Head</i>
AL	36.0	33.0	29.0	29.0	24.0
AK	0.50	0.40	0.23	0.24	0.26
AZ	30.0	30.0	25.0	32.0	33.0
AR	225	223	221	215	200
CA	44.0	43.0	40.0	27.0	35.0
CO	286	332	350	316	305
CT	1.20	1.00	1.10	1.00	0.80
DE	7.60	8.90	8.40	8.40	8.00
FL	16.00	16.00	16.00	14.00	13.00
GA	104.0	115.0	102.0	96.0	100.0
HI	5.30	5.10	5.10	4.90	4.50
ID	5.00	5.00	5.00	5.30	5.60
IL	945	820	825	835	850
IN	775	685	610	615	605
IA	2,110	1,980	1,855	1,780	1,750
KS	362	328	315	309	322
KY	120.0	116.0	91.0	92.0	89.0
LA	9.40	5.80	5.80	5.80	4.60
ME	1.80	2.10	1.90	1.80	1.90
MD	12.00	10.00	8.00	8.00	9.00
MA	3.20	3.30	2.80	2.90	2.40
MI	197	192	192	194	195
MN	1,080	1,030	1,035	1,060	1,070
MS	59.0	57.5	51.5	60.0	59.0
MO	775	755	710	715	690
MT	38.5	36.0	33.5	38.0	36.0
NE	680	640	625	620	720
NV	1.20	1.20	1.20	0.80	0.80
NH	0.60	0.90	1.00	0.80	0.90
NJ	2.55	2.00	1.30	1.70	2.10
NM	1.20	1.10	0.80	0.50	0.40
NY	12.00	8.00	15.00	16.00	14.50
NC	2,125	2,120	2,140	2,150	2,180
ND	52.0	59.0	60.0	57.0	52.5
OH	359	330	299	295	300
OK	515	630	665	675	670
OR	7.00	7.20	6.40	6.60	6.20
PA	189	184	194	212	212
RI	0.85	0.70	0.85	0.60	0.60
SC	68.0	55.0	53.0	56.0	57.0
SD	240	222	247	265	269
TN	80.0	54.0	67.0	53.0	51.0
TX	116	151	154	162	184
UT	75.5	97.0	110.0	117.0	137.0
VT	0.90	0.60	0.80	0.60	0.50
VA	73.0	68.0	64.0	54.0	60.0
WA	8.00	7.00	6.50	5.50	5.00
WV	4.00	2.00	1.80	1.50	2.20
WI	166	138	124	133	111
WY	35.5	29.0	32.0	36.0	42.0
US	12,061	11,641	11,409	11,385	11,492

<sup>1</sup> May not add due to rounding.

<sup>2</sup> December preceding year.

**Annual Farrowings: Pigs Per Litter by State and United States,  
December-November 1998-2002<sup>1 2</sup>**

State	1998	1999	2000	2001	2002
	<i>Number</i>	<i>Number</i>	<i>Number</i>	<i>Number</i>	<i>Number</i>
AL	8.06	8.09	8.41	8.59	9.04
AK	7.42	7.25	6.96	8.33	9.15
AZ	8.50	9.03	9.00	7.91	7.91
AR	8.48	8.48	8.83	9.18	9.53
CA	9.18	9.28	9.28	8.85	8.69
CO	8.57	8.43	8.45	8.44	8.46
CT	8.20	8.20	8.10	8.00	8.00
DE	8.82	8.88	8.69	7.26	7.00
FL	7.25	7.00	7.00	7.00	7.00
GA	8.37	8.61	8.78	8.79	8.84
HI	7.36	7.65	7.06	7.55	7.11
ID	7.60	8.20	8.20	7.92	7.50
IL	8.60	8.64	8.71	8.74	8.83
IN	8.65	8.68	8.80	8.83	8.74
IA	8.71	8.82	8.85	8.62	8.61
KS	8.82	8.83	8.75	8.61	8.66
KY	8.43	8.68	8.52	8.66	8.57
LA	7.45	7.24	7.24	7.41	6.96
ME	8.00	6.50	7.00	7.50	6.50
MD	7.42	8.20	8.13	8.00	7.78
MA	7.81	7.58	7.39	7.53	7.25
MI	8.78	8.97	8.94	8.98	9.00
MN	8.90	8.97	8.95	9.00	8.88
MS	8.86	9.08	9.40	9.40	8.51
MO	8.75	8.72	8.80	8.90	9.01
MT	8.94	9.03	9.07	9.11	9.11
NE	8.50	8.64	8.84	8.75	8.96
NV	8.37	8.20	8.20	8.20	8.20
NH	8.20	7.20	7.00	7.70	8.50
NJ	8.16	6.58	7.04	7.53	8.38
NM	7.58	7.45	7.25	7.00	7.25
NY	8.25	8.13	8.60	8.63	8.62
NC	8.81	8.88	8.83	8.99	9.01
ND	8.56	8.76	8.55	8.35	8.46
OH	8.64	8.68	8.82	8.73	8.91
OK	9.05	9.07	9.00	9.28	8.94
OR	9.00	8.19	8.44	8.33	8.71
PA	8.72	8.78	8.72	8.83	8.87
RI	6.69	5.20	6.80	7.50	6.50
SC	8.21	8.78	8.81	8.93	8.96
SD	8.65	8.92	8.93	8.88	8.93
TN	8.18	8.07	8.28	8.36	8.33
TX	8.46	9.30	9.45	8.82	8.93
UT	8.70	8.62	8.90	9.01	9.07
VT	8.20	8.30	8.00	8.20	8.50
VA	8.78	9.06	9.34	9.15	9.13
WA	8.25	8.71	8.77	8.73	8.40
WV	8.00	8.00	7.28	7.00	7.95
WI	8.33	8.53	8.76	8.36	8.52
WY	8.62	8.59	8.75	8.67	8.69
US	8.71	8.79	8.83	8.84	8.85

<sup>1</sup> May not add due to rounding

<sup>2</sup> December preceding year.

**Annual Farrowings: Pig Crop by State and United States,  
December-November 1998-2002<sup>1 2</sup>**

State	1998	1999	2000	2001	2002
	<i>1,000 Head</i>	<i>1,000 Head</i>	<i>1,000 Head</i>	<i>1,000 Head</i>	<i>1,000 Head</i>
AL	290.0	267.0	244.0	249.0	217.0
AK	3.71	2.90	1.60	2.00	2.38
AZ	255.0	271.0	225.0	253.0	261.0
AR	1,907	1,891	1,951	1,973	1,905
CA	404.0	399.0	371.0	239.0	304.0
CO	2,452	2,800	2,957	2,667	2,581
CT	9.84	8.20	8.91	8.00	6.40
DE	67.00	79.00	73.00	61.00	56.00
FL	116.00	112.00	112.00	98.00	91.00
GA	870.0	990.0	896.0	844.0	884.0
HI	39.00	39.00	36.00	37.00	32.00
ID	38.00	41.00	41.00	42.00	42.00
IL	8,127	7,084	7,189	7,301	7,502
IN	6,705	5,943	5,370	5,428	5,287
IA	18,384	17,471	16,418	15,336	15,069
KS	3,194	2,897	2,756	2,662	2,787
KY	1,011.0	1,007.0	775.0	797.0	763.0
LA	70.00	42.00	42.00	43.00	32.00
ME	14.40	13.65	13.30	13.50	12.35
MD	89.00	82.00	65.00	64.00	70.00
MA	25.00	25.00	20.68	21.85	17.40
MI	1,729	1,723	1,716	1,742	1,755
MN	9,612	9,244	9,265	9,541	9,498
MS	523.0	522.0	484.0	564.0	502.0
MO	6,783	6,587	6,248	6,365	6,220
MT	344.0	325.0	304.0	346.0	328.0
NE	5,781	5,528	5,525	5,425	6,453
NV	10.04	9.84	9.84	6.56	6.56
NH	4.92	6.48	7.00	6.16	7.65
NJ	20.80	13.15	9.15	12.80	17.60
NM	9.10	8.20	5.80	3.50	2.90
NY	99.00	65.00	129.00	138.00	125.00
NC	18,728	18,818	18,887	19,326	19,649
ND	445.0	517.0	513.0	476.0	444.0
OH	3,102	2,863	2,636	2,575	2,673
OK	4,663	5,716	5,985	6,261	5,989
OR	63.00	59.00	54.00	55.00	54.00
PA	1,649	1,615	1,692	1,871	1,881
RI	5.69	3.64	5.78	4.50	3.90
SC	558.0	483.0	467.0	500.0	511.0
SD	2,077	1,981	2,205	2,352	2,403
TN	654.0	436.0	555.0	443.0	425.0
TX	981	1,404	1,455	1,429	1,643
UT	657.0	836.0	979.0	1,054.0	1,242.0
VT	7.38	4.98	6.40	4.92	4.25
VA	641.0	616.0	598.0	494.0	548.0
WA	66.00	61.00	57.00	48.00	42.00
WV	32.00	16.00	13.10	10.50	17.50
WI	1,383	1,177	1,086	1,112	946
WY	306.0	249.0	280.0	312.0	365.0
US	105,005	102,352	100,743	100,617	101,678

<sup>1</sup> May not add due to rounding.

<sup>2</sup> December preceding year.

## Index

Page

Annual Farrowings: Number of Sows, by State and United States, December-November 1998-2002 .....	32
Annual Farrowings: Pig Crop by State and United States, December-November 1998-2002 .....	34
Annual Farrowings: Pigs Per Litter by State and United States, December-November 1998-2002 .....	33
Farrowings: Number of Sows, Pig Crop, and Pigs per Litter, U.S., 1998-2002 .....	4
Farrowings: Number of Sows by State and United States, 1998-2002	
December-February .....	24
March-May .....	26
June-August .....	28
September-November .....	30
Farrowings: Pig Crop by State and United States, 1998-2002	
December-February .....	25
March-May .....	27
June-August .....	29
September-November .....	31
Farrowings: Pigs Per Litter by State and United States, 1998-2002	
December-February .....	24
March-May .....	26
June-August .....	28
September-November .....	30
Hogs and Pigs: Inventory Number by Class, Weight Group, and Quarter, United States, 1998-2002 .....	3
Hogs and Pigs: Breeding Inventory Number by State and United States, 1998-2002	
December 1 .....	6
March 1 .....	12
June 1 .....	16
September 1 .....	20
Hogs and Pigs: Market Inventory Number by State and United States, 1998-2002	
December 1 .....	7
March 1 .....	13
June 1 .....	17
September 1 .....	21
Hogs and Pigs: Market Inventory, Under 60 Pounds by State and United States, 1998-2002	
December 1 .....	8

March 1 .....	14
June 1 .....	18
September 1 .....	22
Hogs and Pigs: Market Inventory, 60-119 Pounds by State and United States, 1998-2002	
December 1 .....	9
March 1 .....	14
June 1 .....	18
September 1 .....	22
Hogs and Pigs: Market Inventory, 120-179 Pounds by State and United States, 1998-2002	
December 1 .....	10
March 1 .....	15
June 1 .....	19
September 1 .....	23
Hogs and Pigs: Market Inventory, 180 Pounds and Over by State and United States, 1998-2002	
December 1 .....	11
March 1 .....	15
June 1 .....	19
September 1 .....	23
Hogs and Pigs: Total Inventory Number by State and United States, 1998-2002	
December 1 .....	5
March 1 .....	12
June 1 .....	16
September 1 .....	20
Statistical Bulletin Publication Schedule and other ASB Services .....	37
Summary .....	2

## Statistical Bulletin Publication Schedule and other ASB Services

**Statistical Bulletins:** The National Agricultural Statistics Service will issue a series of twenty bulletins containing final estimates for agricultural data series based on the review of the 2002 Census of Agriculture and other information. The product number, bulletin title, and tentative release dates are as follows.

NASS-SB993	Agricultural Land Values and Cash Rents-Final Estimates 1999-2003	03/12/04
NASS-SB989	Cattle - Final Estimates 1999-2003	04/30/04
NASS-SB980	Chickens and Eggs - Final Estimates 1998-2002	04/29/04
NASS-SB997	Citrus Fruits - Final Estimates 1997-2002	08/20/04
NASS-SB999	Crop Values - Final Estimates 1997-2002	10/15/04
NASS-SB991	Farms and Land in Farms - Final Estimates 1998-2002	02/27/04
NASS-SB982	Field Crops - Final Estimates 1997-2002	03/17/04
NASS-SB986	Hogs and Pigs - Final Estimates 1998-2002	03/22/04
NASS-SB992	Honey - Final Estimates 1998-2002	04/29/04
NASS-SB1002	Livestock Operations - Final Estimates 1998-2002	04/30/04
NASS-SB995	Meat Animals, PDI - Final Estimates 1998-2002	05/21/04
NASS-SB988	Milk Cows and Production - Final Estimates 1998-2002	04/30/04
NASS-SB996	Milk Disposition and Income - Final Estimates 1998-2002	05/21/04
NASS-SB985	Noncitrus Fruits and Nuts - Final Estimates 1997-2002	05/21/04
NASS-SB998	Potatoes and Sweet Potatoes - Final Estimates 1997-2002	08/20/04
NASS-SB994	Poultry Production and Value - Final Estimates 1998-2002	04/29/04
NASS-SB984	Rice Stocks - Final Estimates 1998-2003	03/17/04
NASS-SB990	Sheep and Goats - Final Estimates 1999-2003	04/30/04
NASS-SB983	Stocks of Grains, Oilseeds, and Hay - Final Estimates 1998-2003	03/17/04
NASS-SB981	Turkeys - Final Estimates 1998-2002	04/29/04
NASS-SB987	Vegetables - Final Estimates 1997-2002	05/28/04

**Electronic Publications:** These bulletins will be available **free of charge** on the Internet from the NASS Home Page at: [www.usda.gov/nass/](http://www.usda.gov/nass/), in either text , PDF, or CSV format. From the Home Page select "Historic Data," then "Statistical Bulletins."

**Printed Copies:** Printed copies of the bulletins may be ordered by calling the Sales Order Desk toll free at 1-800-999-6779. Costs for printed copies of the publications range from \$15.00 to \$50.00. Visa, MasterCard, check, or money order are acceptable for payment.

**Agricultural Statistics Database - Quick Stats:** Selected State, U.S. and County information is available in an online database via the Internet **free of charge**. The database allows custom extracts based on commodity, year, state and other selection criteria and produces an output file compatible for updating databases and spreadsheets. The database can be accessed from the NASS Home Page at: [www.usda.gov/nass/](http://www.usda.gov/nass/).

**Agricultural Census Publications:** The U. S. Department of Agriculture's National Agricultural Statistics Service (NASS) released preliminary national and state data from the 2002 Census of Agriculture and final data for Puerto Rico on February 3, 2004. Census 2002 preliminary data include demographic items such as sex of operator, residence on or off the farm, days worked off farm, years present on farm, age group categories, race, and number of persons living in each household.

**Assistance:** For more information pertaining to this bulletin, call Dan Lofthus at (202) 720-3106. For assistance with general agricultural statistics or further information about NASS or its products and services, contact the **Agricultural Statistics Hotline** at **1-800-727-9540**, 7:30 a.m. to 4:00 p.m. ET, or e-mail: [nass@nass.usda.gov](mailto:nass@nass.usda.gov) .

The United States Department of Agriculture (USDA) prohibits discrimination in all its programs on the basis of race, color, national origin, gender, religion, age, disability, political beliefs, sexual orientation, and marital or family status. (Not all prohibited bases apply to all programs.) Persons with disabilities who require alternative means for communication of program information (braille, large print, audiotape, etc.) should contact the USDA's TARGET Center at 202-720-2600 (voice and TDD).

To file a complaint of discrimination, write USDA, Director, Office of Civil Rights, Room 326-W, Whitten Building, 1400 Independence Avenue, SW, Washington, D.C., 20250-9410, or call 202-720-5964 (voice or TDD). USDA is an equal opportunity provider and employer.