



United States
Department of
Agriculture

National
Agricultural
Statistics
Service



Statistical
Bulletin
Number 951

Hogs and Pigs

Final Estimates 1993-97

USDA



Hogs and Pigs: Final Estimates by State, 1993-97, U.S. Department of Agriculture, Agricultural Statistics Board, National Agricultural Statistics Service, Statistical Bulletin No. 951.

Introduction: This bulletin presents final estimates, including revisions made by the Agricultural Statistics Board (ASB), for the production years 1993 through 1997. Inventory, market hogs, breeding herd, and pig crops were published during calendar years 1993-97 in periodic ASB reports. Data included in this publication provide a historic record and a benchmark for current estimates. Inventory values and value per head will be published in the Meat Animals, PDI - Final Estimates 1993-1997, Statistical Bulletin No. 959.

Procedures: Revisions were made after a thorough review of the original survey data and all additional data now available, including the 1997 Census of Agriculture. Other data series considered included slaughter data, shipment records, imports, and exports. Inventory levels, and pig crops, and their relationship to slaughter were compared to historic totals. The 1993-1997 estimates shown herein are considered final and will not be revised again.

At the National level, revisions to estimates of U.S. December 1 inventory and annual pig crops were less than one percent.

Year	U. S. December 1 Inventory			U. S. Annual Pig Crop		
	From (000)	To (000)	Change %	From (000)	To (000)	Change %
1997	60,915	61,158	+0.4	99,847	99,584	-0.3
1996	56,141	56,124	-	94,957	94,459	-0.5
1995	58,264	58,201	-0.1	98,516	98,816	+0.3
1994	59,990	59,738	-0.4	101,416	101,478	+0.1
1993	57,904	57,940	+0.1	97,050	97,326	+0.3
1992	58,202	58,202	-	99,142	99,142	-

Historic Estimates: Final estimates of Hogs and Pigs in earlier years are available in Statistical Bulletins No. 904 for 1988-92, No. 797 for 1983-87, No. 716 for 1979-82, No. 648 for 1976-78, No. 588 for 1970-75, No. 496 for 1965-69, No. 383 for 1960-64, No. 276 for 1955-59, and No. 187 for 1930-54.

Other Statistical Bulletins: The National Agricultural Statistics Service will issue a series of twenty bulletins in 1998-99 containing final estimates for agricultural commodities based on the review of the 1997 Census of Agriculture and other information. The product number, bulletin title, and tentative release dates are as follows.

NASS-SB944	Chickens and Eggs - Final Estimates 1994-97	12/10/98
NASS-SB945	Turkeys - Final Estimates 1994-97	12/17/98
NASS-SB947	Field Crops - Final Estimates 1992-97	12/18/98
NASS-SB948	Stocks of Grains, Oilseeds, and Hay - Final Estimates 1993-98	12/18/98
NASS-SB949	Rice Stocks - Final Estimates 1993-98	12/21/98
NASS-SB950	Noncitrus Fruits and Nuts - Final Estimates 1992-97	12/21/98
NASS-SB951	Hogs and Pigs - Final Estimates 1993-97	12/22/98
NASS-SB946	Vegetables - Final Estimates 1992-97	01/11/99
NASS-SB952	Milk Cows and Production - Final Estimates 1993-97	01/19/99
NASS-SB953	Cattle - Final Estimates 1994-98	01/19/99
NASS-SB954	Sheep and Goats - Final Estimates 1994-98	01/19/99
NASS-SB955	Farms and Land in Farms - Final Estimates 1993-97	01/19/99
NASS-SB956	Honey - Final Estimates 1993-97	02/09/99
NASS-SB957	Agricultural Land Values - Final Estimates 1994-98	03/12/99
NASS-SB958	Poultry Production and Value - Final Estimates 1994-97	03/15/99
NASS-SB959	Meat Animals, PDI - Final Estimates 1993-97	05/21/99
NASS-SB960	Milk Disposition and Income - Final Estimates 1993-97	05/21/99
NASS-SB961	Citrus Fruits - Final Estimates 1992-97	Aug. 99
NASS-SB962	Potatoes and Sweet Potatoes - Final Estimates 1992-97	Aug. 99
NASS-SB963	Crop Values - Final Estimates 1992-97	Oct. 99

Electronic Publications: These bulletins will be available **FREE OF CHARGE** on the Internet from the NASS Home Page at: <http://www.usda.gov/nass/>, in either text or PDF format. From the Homepage select "Historic Data," then "Statistical Bulletins."

Internet Published Estimates Data Base: Selected historical State and U.S. information is now available in an online data base via the Internet **free of charge**. County information will be available by mid 1999. The database allows custom extracts based on commodity, year, state and other selection criteria and produces an output file compatible for updating databases and spreadsheets. The database can be accessed from the NASS Home Page at: <http://www.usda.gov/nass/>.

Printed Copies: Printed copies of the bulletins may be ordered by calling the Sales Order Desk toll free at 1-800-999-6779. Costs for printed copies of the publications range from \$15.00 to \$20.00. Visa, MasterCard, check, or money order are acceptable for payment.

Agricultural Census Publications: The Volume 1, Geographic Area Series publication containing the United States Summary provides National data and selected data for each State. Separate State reports present statistics for the entire State and each county. Census reports cover the 1997 production year, with comparative data for earlier census years. The 1997 Census of Agriculture Geographic Area Series products, including all manipulable data files and Adobe Acrobat (PDF) files of the printed reports, will be available on March 20, 1999 via the Internet at <http://www.usda.gov/nass/>. The information is also available on CD-ROM, and in printed publications. Printed copies of the Census publications and CD-ROM's may be ordered by calling the Sales Order Desk toll free at 1-800-999-6779.

Assistance: For more information pertaining to this bulletin, call Livestock and Economics Branch at (202) 720-3570. For assistance with general agricultural statistics or further information about NASS or its products and services, contact the **Agricultural Statistics Hotline** at **1-800-727-9540**, 7:30 a.m. to 4:00 p.m. ET, or e-mail: nass@nass.usda.gov.

The United States Department of Agriculture (USDA) prohibits discrimination in all its programs on the basis of race, color, national origin, gender, religion, age, disability, political beliefs, sexual orientation, and marital or family status. (Not all prohibited bases apply to all programs.) Persons with disabilities who require alternative means for communication of program information (braille, large print, audiotape, etc.) should contact the USDA's TARGET Center at 202-720-2600 (voice and TDD).

To file a complaint of discrimination, write USDA, Director, Office of Civil Rights, Room 326-W, Whitten Building, 1400 Independence Avenue, SW, Washington, D.C., 20250-9410, or call 202-720-5964 (voice or TDD). USDA is an equal opportunity provider and employer.

**Hogs and Pigs: Inventory Number by Class, Weight Group,
and Quarter, United States, 1993-97 ¹**

Item	1993	1994	1995	1996	1997
	<i>1,000 Head</i>	<i>1,000 Head</i>	<i>1,000 Head</i>	<i>1,000 Head</i>	<i>1,000 Head</i>
March 1 Inventory					
All Hogs and Pigs	56,661	57,435	58,283	55,741	55,049
Kept for Breeding	7,053	7,189	6,945	6,701	6,637
Market	49,608	50,246	51,337	49,040	48,412
Market Hogs and Pigs by Weight Groups					
Under 60 Pounds	18,502	18,750	19,144	18,534	18,490
60-119 Pounds	12,060	12,144	12,395	11,732	11,627
120-179 Pounds	10,480	10,575	10,640	10,021	9,858
180 Pounds and Over	8,566	8,778	9,159	8,754	8,437
June 1 Inventory					
All Hogs and Pigs	58,795	60,847	59,329	56,038	57,366
Kept for Breeding	7,260	7,532	7,117	6,682	6,789
Market	51,536	53,315	52,211	49,356	50,577
Market Hogs and Pigs by Weight Groups					
Under 60 Pounds	20,739	22,024	21,042	19,645	19,988
60-119 Pounds	12,898	13,092	12,841	12,196	12,574
120-179 Pounds	9,877	10,007	9,780	9,757	10,002
180 Pounds and Over	8,022	8,193	8,549	7,759	8,013
September 1 Inventory					
All Hogs and Pigs	59,169	62,208	60,137	56,961	60,456
Kept for Breeding	7,208	7,468	6,907	6,577	6,858
Market	51,961	54,740	53,229	50,384	53,598
Market Hogs and Pigs by Weight Groups					
Under 60 Pounds	19,632	20,633	19,822	18,782	20,662
60-119 Pounds	13,089	13,883	13,347	12,498	13,388
120-179 Pounds	10,689	11,223	11,044	10,418	10,673
180 Pounds and Over	8,551	9,002	9,017	8,687	8,875
December 1 Inventory					
All Hogs and Pigs	57,940	59,738	58,201	56,124	61,158
Kept for Breeding	7,166	6,998	6,770	6,578	6,957
Market	50,774	52,739	51,431	49,546	54,200
Market Hogs and Pigs by Weight Groups					
Under 60 Pounds	19,171	19,477	18,916	18,503	20,237
60-119 Pounds	12,627	13,007	12,755	12,193	13,319
120-179 Pounds	10,268	10,927	10,704	10,209	11,188
180 Pounds and Over	8,709	9,329	9,057	8,641	9,457

¹ May not add due to rounding.

**Farrowings: Number of Sows, Pig Crop, and Pigs
per Litter, United States, 1993-97 ¹**

Item	1993	1994	1995	1996	1997
	<i>1,000 Head</i>	<i>1,000 Head</i>	<i>1,000 Head</i>	<i>1,000 Head</i>	<i>1,000 Head</i>
Sows Farrowing					
Dec-Feb ²	2,812	2,880	2,881	2,735	2,684
Mar-May	3,226	3,377	3,165	2,930	2,911
Dec-May ²	6,039	6,257	6,046	5,665	5,595
Jun-Aug	2,978	3,108	2,974	2,718	2,946
Sep-Nov	2,998	3,031	2,869	2,731	2,939
Jun-Nov	5,977	6,139	5,843	5,449	5,884
Pig Crop					
Dec-Feb ²	22,897	23,319	23,742	23,054	23,164
Mar-May	26,213	27,898	26,335	24,833	25,229
Dec-May ²	49,110	51,217	50,077	47,888	48,394
Jun-Aug	24,088	25,530	24,794	23,244	25,696
Sep-Nov	24,128	24,732	23,945	23,327	25,494
Jun-Nov	48,216	50,261	48,739	46,571	51,190
	<i>Number</i>	<i>Number</i>	<i>Number</i>	<i>Number</i>	<i>Number</i>
Pigs per Litter					
Dec-Feb ²	8.14	8.10	8.24	8.43	8.63
Mar-May	8.13	8.26	8.32	8.48	8.67
Dec-May ²	8.13	8.19	8.28	8.45	8.65
Jun-Aug	8.09	8.21	8.34	8.55	8.72
Sep-Nov	8.05	8.16	8.35	8.54	8.67
Jun-Nov	8.07	8.19	8.34	8.55	8.70

¹ May not add due to rounding.

² December preceding year.

**Hogs and Pigs: Total Inventory Numbers by State
and United States, December 1, 1993-97 ¹**

State	1993	1994	1995	1996	1997
	<i>1,000 Head</i>	<i>1,000 Head</i>	<i>1,000 Head</i>	<i>1,000 Head</i>	<i>1,000 Head</i>
AL	320	280	230	195	190
AK	1.8	2.0	2.0	1.6	2.1
AZ	140	170	125	150	145
AR	890	770	790	825	860
CA	260	255	240	210	210
CO	450	500	580	630	790
CT	6.0	5.5	5.0	5.0	4.5
DE	44	33	33	32	30
FL	100	100	85	65	55
GA	1,020	950	700	650	520
HI	33	35	34	28	29
ID	58	58	45	29	30
IL	5,450	5,350	4,800	4,400	4,700
IN	4,200	4,300	4,000	3,750	3,950
IA	15,000	14,500	13,500	12,400	14,600
KS	1,420	1,350	1,300	1,530	1,530
KY	850	780	800	600	570
LA	43	45	55	40	32
ME	6.0	6.5	7.0	5.5	6.0
MD	170	120	80	75	85
MA	22.0	19.0	21.0	18.0	18.5
MI	1,220	1,250	1,100	1,000	1,030
MN	4,750	4,850	4,950	4,850	5,700
MS	150	180	225	215	220
MO	3,000	3,500	3,550	3,450	3,550
MT	180	210	180	150	180
NE	4,300	4,350	4,050	3,550	3,500
NV	9.0	9.0	7.0	6.5	7.5
NH	4.5	3.0	3.0	3.0	4.4
NJ	26.0	24.0	34.0	24.0	23.0
NM	25.0	25.0	5.0	5.0	6.0
NY	90	72	66	82	79
NC	5,400	7,000	8,200	9,300	9,600
ND	320	245	280	200	200
OH	1,630	1,800	1,800	1,500	1,700
OK	300	590	1,000	1,320	1,650
OR	64	64	45	40	35
PA	1,120	1,100	1,000	970	1,100
RI	4.3	3.0	3.0	3.0	2.8
SC	380	350	350	295	305
SD	1,750	1,740	1,450	1,200	1,400
TN	500	580	500	400	340
TX	500	575	500	490	580
UT	40	44	62	163	295
VT	3.0	3.5	2.5	2.2	2.9
VA	410	390	380	360	400
WA	43	32	51	35	39
WV	31.0	28.0	22.0	19.0	16.0
WI	1,170	1,040	880	770	740
WY	36	51	73	82	95
US	57,940	59,738	58,201	56,124	61,158

¹ May not add due to rounding.

**Hogs and Pigs: Breeding Inventory Numbers by State
and United States, December 1, 1993-97 ¹**

State	1993	1994	1995	1996	1997
	<i>1,000 Head</i>	<i>1,000 Head</i>	<i>1,000 Head</i>	<i>1,000 Head</i>	<i>1,000 Head</i>
AL	40	35	30	25	20
AK	0.4	0.4	0.4	0.4	0.5
AZ	17	18	15	20	15
AR	120	110	110	110	110
CA	33	32	31	27	27
CO	75	110	120	135	160
CT	1.1	1.2	0.9	1.0	0.9
DE	6	5	5	4	4
FL	19	16	14	10	10
GA	140	125	85	80	70
HI	6	6	6	5	5
ID	7	8	6	4	4
IL	685	620	550	520	550
IN	510	510	460	440	460
IA	1,700	1,500	1,360	1,250	1,360
KS	170	155	155	200	200
KY	120	100	110	85	70
LA	8	8	9	7	5
ME	1.2	1.5	1.5	1.1	1.2
MD	29	17	13	12	11
MA	3.5	3.0	3.0	2.5	2.5
MI	165	160	140	125	130
MN	590	550	550	540	650
MS	18	23	25	26	28
MO	435	460	480	450	440
MT	20	22	19	16	20
NE	540	530	500	440	440
NV	1.5	1.5	1.5	1.5	1.0
NH	0.7	0.7	0.6	0.7	0.8
NJ	3.0	3.0	4.0	3.0	3.0
NM	4.0	2.0	2.0	1.7	1.2
NY	12	12	11	13	11
NC	625	750	850	950	1,000
ND	40	25	30	20	24
OH	205	215	240	210	210
OK	60	110	160	170	240
OR	9	9	6	5	5
PA	110	115	110	120	120
RI	0.5	0.4	0.5	0.6	0.6
SC	53	50	40	35	35
SD	215	210	180	155	160
TN	70	75	65	51	45
TX	65	70	65	65	75
UT	5	14	19	33	55
VT	0.7	0.6	0.4	0.3	0.6
VA	47	45	44	43	43
WA	6	5	10	8	6
WV	4.0	3.0	3.0	3.0	3.0
WI	165	150	120	140	105
WY	5	6	9	13	19
US	7,166	6,998	6,770	6,578	6,957

¹ May not add due to rounding.

**Hogs and Pigs: Market Inventory Numbers by State
and United States, December 1, 1993-97 ¹**

State	1993	1994	1995	1996	1997
	<i>1,000 Head</i>	<i>1,000 Head</i>	<i>1,000 Head</i>	<i>1,000 Head</i>	<i>1,000 Head</i>
AL	280	245	200	170	170
AK	1.4	1.6	1.6	1.2	1.6
AZ	123	152	110	130	130
AR	770	660	680	715	750
CA	227	223	209	183	183
CO	375	390	460	495	630
CT	4.9	4.3	4.1	4.0	3.6
DE	38	28	28	28	26
FL	81	84	71	55	45
GA	880	825	615	570	450
HI	27	29	28	23	24
ID	51	50	39	25	26
IL	4,765	4,730	4,250	3,880	4,150
IN	3,690	3,790	3,540	3,310	3,490
IA	13,300	13,000	12,140	11,150	13,240
KS	1,250	1,195	1,145	1,330	1,330
KY	730	680	690	515	500
LA	35	37	46	33	27
ME	4.8	5.0	5.5	4.4	4.8
MD	141	103	67	63	74
MA	18.5	16.0	18.0	15.5	16.0
MI	1,055	1,090	960	875	900
MN	4,160	4,300	4,400	4,310	5,050
MS	132	157	200	189	192
MO	2,565	3,040	3,070	3,000	3,110
MT	160	188	161	134	160
NE	3,760	3,820	3,550	3,110	3,060
NV	7.5	7.5	5.5	5.0	6.5
NH	3.8	2.3	2.4	2.3	3.6
NJ	23.0	21.0	30.0	21.0	20.0
NM	21.0	23.0	3.0	3.3	4.8
NY	78	60	55	69	68
NC	4,775	6,250	7,350	8,350	8,600
ND	280	220	250	180	176
OH	1,425	1,585	1,560	1,290	1,490
OK	240	480	840	1,150	1,410
OR	55	55	39	35	30
PA	1,010	985	890	850	980
RI	3.8	2.6	2.5	2.4	2.2
SC	327	300	310	260	270
SD	1,535	1,530	1,270	1,045	1,240
TN	430	505	435	349	295
TX	435	505	435	425	505
UT	35	30	43	130	240
VT	2.3	2.9	2.1	1.9	2.3
VA	363	345	336	317	357
WA	37	27	41	27	33
WV	27.0	25.0	19.0	16.0	13.0
WI	1,005	890	760	630	635
WY	31	45	64	69	76
US	50,774	52,739	51,431	49,546	54,200

¹ May not add due to rounding.

**Hogs and Pigs: Market Inventory Under 60 Pounds by State
and United States, December 1, 1993-97 ¹**

State	1993	1994	1995	1996	1997
	<i>1,000 Head</i>	<i>1,000 Head</i>	<i>1,000 Head</i>	<i>1,000 Head</i>	<i>1,000 Head</i>
AL	102	89	71	52	60
AK	0.8	0.8	0.7	0.6	0.6
AZ	59	50	46	65	42
AR	370	330	330	255	295
CA	74	70	65	57	60
CO	145	170	205	220	300
CT	2.5	1.5	1.5	1.5	1.0
DE	15	10	10	10	10
FL	37	47	30	30	24
GA	360	315	230	205	165
HI	13	13	13	10	11
ID	18	18	14	9	10
IL	1,800	1,645	1,470	1,380	1,580
IN	1,270	1,300	1,180	1,130	1,230
IA	5,000	4,600	4,280	3,920	4,370
KS	435	415	380	530	580
KY	285	250	270	205	200
LA	13	16	19	15	11
ME	0.5	3.1	2.3	1.0	2.0
MD	62	44	28	27	33
MA	7.5	8.0	7.0	4.0	3.0
MI	340	375	305	295	320
MN	1,580	1,650	1,640	1,640	1,990
MS	39	63	59	51	53
MO	1,025	1,260	1,330	1,280	1,360
MT	51	64	52	47	58
NE	1,390	1,430	1,350	1,190	1,180
NV	3.0	2.0	1.5	1.3	1.9
NH	1.5	0.7	0.8	1.0	1.5
NJ	6.0	5.0	6.0	5.0	5.0
NM	6.0	6.0	1.0	1.3	1.9
NY	33	26	21	28	30
NC	1,950	2,450	2,790	3,300	3,350
ND	105	70	88	60	69
OH	535	600	590	570	650
OK	100	165	370	420	480
OR	19	15	15	15	12
PA	360	335	305	295	360
RI	1.8	1.4	0.9	1.0	1.0
SC	127	115	118	95	90
SD	555	565	430	375	450
TN	150	190	170	129	115
TX	135	165	142	130	150
UT	12	11	13	52	102
VT	0.9	1.0	0.9	0.3	1.0
VA	137	135	118	117	134
WA	16	9	14	11	10
WV	11.0	12.0	9.0	7.0	5.0
WI	400	345	295	235	240
WY	12	15	28	24	29
US	19,171	19,477	18,916	18,503	20,237

¹ May not add due to rounding.

**Hogs and Pigs: Market Inventory, 60-119 Pounds by State
and United States, December 1, 1993-97 ¹**

State	1993	1994	1995	1996	1997
	<i>1,000 Head</i>	<i>1,000 Head</i>	<i>1,000 Head</i>	<i>1,000 Head</i>	<i>1,000 Head</i>
AL	68	60	51	43	40
AK	0.3	0.4	0.4	0.3	0.3
AZ	24	36	24	24	33
AR	130	135	150	170	165
CA	60	65	58	51	45
CO	85	80	85	95	115
CT	1.0	1.0	1.0	0.5	1.0
DE	11	8	8	8	6
FL	20	18	21	10	8
GA	235	210	155	140	130
HI	7	8	7	6	6
ID	15	13	10	7	7
IL	1,165	1,170	1,070	960	980
IN	950	1,000	935	840	880
IA	3,350	3,250	3,070	2,950	3,650
KS	330	305	290	290	260
KY	190	175	180	120	120
LA	10	9	10	7	6
ME	1.0	0.6	2.1	2.0	0.5
MD	34	24	16	14	17
MA	5.5	5.0	5.5	6.0	2.0
MI	245	240	225	210	200
MN	1,020	1,020	1,090	1,070	1,270
MS	38	36	51	54	48
MO	625	730	700	670	650
MT	45	49	44	35	43
NE	980	1,010	930	830	800
NV	2.5	2.5	1.5	1.3	1.9
NH	1.0	0.4	0.8	0.6	1.0
NJ	7.0	4.0	9.0	2.0	3.5
NM	5.0	5.0	1.0	0.8	1.5
NY	18	13	14	15	15
NC	1,100	1,400	1,750	1,950	2,000
ND	70	60	56	40	35
OH	355	390	400	310	340
OK	55	125	155	220	260
OR	14	12	10	8	8
PA	260	255	225	205	260
RI	0.9	0.6	1.0	0.8	0.8
SC	83	78	80	68	70
SD	410	400	330	280	330
TN	115	115	102	85	75
TX	104	148	104	99	120
UT	9	8	11	32	42
VT	0.5	1.5	0.5	0.7	0.6
VA	85	75	81	78	85
WA	9	7	10	8	11
WV	6.0	4.0	3.0	3.0	2.0
WI	265	235	205	155	155
WY	7	10	16	18	19
US	12,627	13,007	12,755	12,193	13,319

¹ May not add due to rounding.

**Hogs and Pigs: Market Inventory, 120-179 Pounds by State
and United States, December 1, 1993-97 ¹**

State	1993	1994	1995	1996	1997
	<i>1,000 Head</i>	<i>1,000 Head</i>	<i>1,000 Head</i>	<i>1,000 Head</i>	<i>1,000 Head</i>
AL	62	53	43	38	40
AK	0.2	0.3	0.3	0.2	0.3
AZ	22	35	21	21	28
AR	160	150	140	150	155
CA	49	45	44	40	45
CO	75	70	85	90	105
CT	0.7	0.9	1.0	0.5	0.7
DE	8	6	6	6	5
FL	17	11	15	10	9
GA	175	170	135	120	100
HI	5	6	6	5	5
ID	10	11	8	6	5
IL	1,000	1,020	920	840	840
IN	830	830	750	745	760
IA	2,550	2,750	2,620	2,350	2,780
KS	275	260	255	260	260
KY	140	145	135	105	105
LA	7	7	9	6	5
ME	3.0	0.3	0.5	1.0	1.5
MD	25	19	13	12	13
MA	3.0	1.5	4.0	3.0	10.0
MI	250	265	235	190	205
MN	830	880	900	840	990
MS	28	31	45	44	46
MO	480	485	480	550	610
MT	37	40	36	30	33
NE	780	800	740	630	640
NV	1.0	1.5	1.5	1.3	1.8
NH	0.6	0.5	0.4	0.3	0.7
NJ	6.0	5.0	6.0	7.0	5.5
NM	5.0	8.0		0.7	0.7
NY	14	11	11	13	13
NC	925	1,260	1,550	1,700	1,840
ND	55	47	56	40	37
OH	300	335	340	270	320
OK	46	100	110	210	200
OR	14	11	7	5	6
PA	210	210	195	190	210
RI	0.7	0.3	0.4	0.4	0.3
SC	69	60	63	53	60
SD	300	295	280	210	260
TN	100	110	92	71	60
TX	109	117	97	96	115
UT	8	6	11	32	38
VT	0.4	0.3	0.4	0.2	0.1
VA	75	67	70	64	73
WA	8	6	8	5	7
WV	3.0	4.0	3.0	2.5	3.0
WI	190	170	145	130	125
WY	6	10	10	15	15
US	10,268	10,927	10,704	10,209	11,188

¹ May not add due to rounding.

**Hogs and Pigs: Market Inventory, 180 Pounds and Over by State
and United States, December 1, 1993-97 ¹**

State	1993	1994	1995	1996	1997
	<i>1,000 Head</i>	<i>1,000 Head</i>	<i>1,000 Head</i>	<i>1,000 Head</i>	<i>1,000 Head</i>
AL	48	43	35	37	30
AK	0.1	0.1	0.2	0.1	0.4
AZ	18	31	19	20	27
AR	110	45	60	140	135
CA	44	43	42	35	33
CO	70	70	85	90	110
CT	0.7	0.9	0.6	1.5	0.9
DE	4	4	4	4	5
FL	7	8	5	5	4
GA	110	130	95	105	55
HI	2	2	2	2	2
ID	8	8	7	3	4
IL	800	895	790	700	750
IN	640	660	675	595	620
IA	2,400	2,400	2,170	1,930	2,440
KS	210	215	220	250	230
KY	115	110	105	85	75
LA	5	5	8	5	5
ME	0.3	1.0	0.6	0.4	0.8
MD	20	16	10	10	11
MA	2.5	1.5	1.5	2.5	1.0
MI	220	210	195	180	175
MN	730	750	770	760	800
MS	27	27	45	40	45
MO	435	565	560	500	490
MT	27	35	29	22	26
NE	610	580	530	460	440
NV	1.0	1.5	1.0	1.1	0.9
NH	0.7	0.7	0.4	0.4	0.4
NJ	4.0	7.0	9.0	7.0	6.0
NM	5.0	4.0	1.0	0.5	0.7
NY	13	10	9	13	10
NC	800	1,140	1,260	1,400	1,410
ND	50	43	50	40	35
OH	235	260	230	140	180
OK	39	90	205	300	470
OR	8	17	7	7	4
PA	180	185	165	160	150
RI	0.4	0.3	0.2	0.2	0.1
SC	48	47	49	44	50
SD	270	270	230	180	200
TN	65	90	71	64	45
TX	87	75	92	100	120
UT	6	5	8	14	58
VT	0.5	0.1	0.3	0.7	0.6
VA	66	68	67	58	65
WA	4	5	9	3	5
WV	7.0	5.0	4.0	3.5	3.0
WI	150	140	115	110	115
WY	6	10	10	12	13
US	8,709	9,329	9,057	8,641	9,457

¹ May not add due to rounding.

**Hogs and Pigs: Total Inventory Numbers by State
and United States, March 1, 1993-97**

State	1993	1994	1995	1996	1997
	<i>1,000 Head</i>	<i>1,000 Head</i>	<i>1,000 Head</i>	<i>1,000 Head</i>	<i>1,000 Head</i>
AR	820	880	730	790	860
GA	1,100	990	790	660	590
IL	5,700	5,600	5,400	4,750	4,400
IN	4,350	4,100	4,200	3,900	3,500
IA	14,300	14,600	14,200	12,500	11,900
KS	1,500	1,420	1,370	1,280	1,410
KY	840	810	800	700	570
MI	1,080	1,120	1,050	1,000	950
MN	4,700	4,750	4,700	4,800	5,000
MO	2,800	2,850	3,550	3,350	3,250
NE	4,450	4,200	4,050	3,700	3,450
NC	4,500	5,700	7,200	8,400	9,500
OH	1,750	1,580	1,550	1,650	1,400
OK	240	360	650	1,050	1,370
PA	1,030	1,200	1,050	1,060	1,020
SD	1,780	1,680	1,670	1,320	1,130
WI	1,200	1,170	950	750	750
Oth Sts ¹	4,521	4,425	4,373	4,081	3,999
US	56,661	57,435	58,283	55,741	55,049

¹ Individual State estimates not available for the 33 Other States.

**Hogs and Pigs: Breeding Inventory Numbers by State
and United States, March 1, 1993-97**

State	1993	1994	1995	1996	1997
	<i>1,000 Head</i>	<i>1,000 Head</i>	<i>1,000 Head</i>	<i>1,000 Head</i>	<i>1,000 Head</i>
AR	115	120	110	115	110
GA	155	140	95	80	70
IL	730	730	670	580	550
IN	535	515	500	470	440
IA	1,650	1,600	1,450	1,270	1,200
KS	180	175	160	165	185
KY	120	115	105	95	75
MI	180	185	155	150	130
MN	550	560	540	550	600
MO	390	445	455	480	450
NE	540	520	490	440	440
NC	520	675	800	935	1,000
OH	230	225	210	230	200
OK	38	65	120	160	180
PA	105	120	110	120	120
SD	230	220	215	170	160
WI	175	165	135	105	135
Oth Sts ¹	610	614	625	586	592
US	7,053	7,189	6,945	6,701	6,637

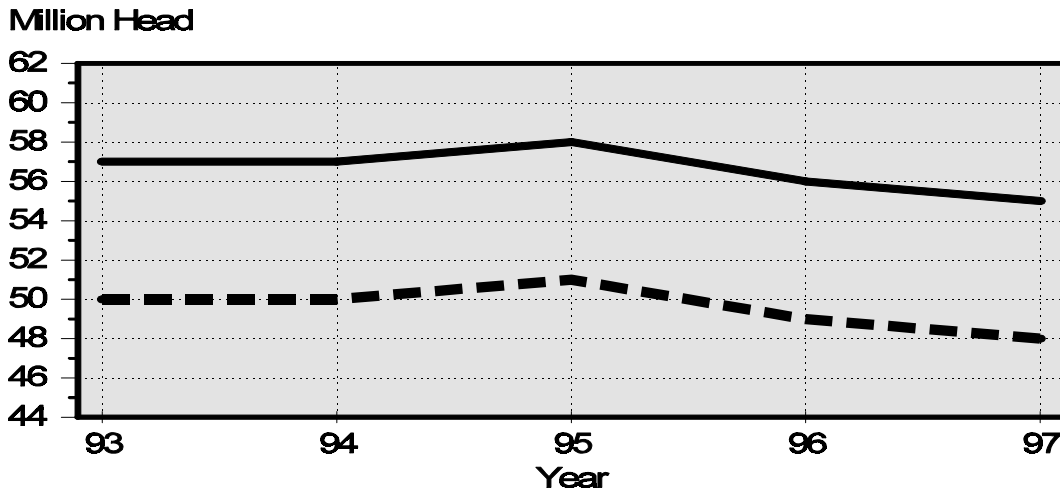
¹ Individual State estimates not available for the 33 Other States.

**Hogs and Pigs: Market Inventory Numbers by State
and United States, March 1, 1993-97**

State	1993	1994	1995	1996	1997
	<i>1,000 Head</i>	<i>1,000 Head</i>	<i>1,000 Head</i>	<i>1,000 Head</i>	<i>1,000 Head</i>
AR	705	760	620	675	750
GA	945	850	695	580	520
IL	4,970	4,870	4,730	4,170	3,850
IN	3,815	3,585	3,700	3,430	3,060
IA	12,650	13,000	12,750	11,230	10,700
KS	1,320	1,245	1,210	1,115	1,225
KY	720	695	695	605	495
MI	900	935	895	850	820
MN	4,150	4,190	4,160	4,250	4,400
MO	2,410	2,405	3,095	2,870	2,800
NE	3,910	3,680	3,560	3,260	3,010
NC	3,980	5,025	6,400	7,465	8,500
OH	1,520	1,355	1,340	1,420	1,200
OK	202	295	530	890	1,190
PA	925	1,080	940	940	900
SD	1,550	1,460	1,455	1,150	970
WI	1,025	1,005	815	645	615
Oth Sts ¹	3,911	3,811	3,747	3,495	3,407
US	49,608	50,246	51,337	49,040	48,412

¹ Individual State estimates not available for the 33 Other States.

**March 1 Hog Inventory & Market Hogs
United States**



**Hogs and Pigs: Market Inventory Under 60 Pounds by State
and United States, March 1, 1993-97 ¹**

State	1993	1994	1995	1996	1997
	<i>1,000 Head</i>	<i>1,000 Head</i>	<i>1,000 Head</i>	<i>1,000 Head</i>	<i>1,000 Head</i>
AR	350	370	280	310	260
GA	385	340	250	235	180
IL	1,800	1,800	1,660	1,520	1,430
IN	1,445	1,260	1,330	1,250	1,140
IA	4,200	4,300	4,310	3,800	3,720
KS	530	455	450	425	515
KY	285	260	265	225	190
MI	295	300	280	275	270
MN	1,670	1,680	1,620	1,660	1,690
MO	965	995	1,370	1,210	1,270
NE	1,600	1,545	1,400	1,280	1,220
NC	1,590	2,060	2,580	3,050	3,400
OH	580	545	530	590	540
OK	70	113	190	380	410
PA	330	370	340	355	350
SD	550	530	520	430	375
WI	395	385	320	235	240
Oth Sts ²	1,462	1,442	1,449	1,304	1,290
US	18,502	18,750	19,144	18,534	18,490

¹ Weight groups may not add to market due to rounding.

² Individual State estimates not available for the 33 Other States.

**Hogs and Pigs: Market Inventory, 60-119 Pounds by State
and United States, March 1, 1993-97 ¹**

State	1993	1994	1995	1996	1997
	<i>1,000 Head</i>	<i>1,000 Head</i>	<i>1,000 Head</i>	<i>1,000 Head</i>	<i>1,000 Head</i>
AR	110	125	160	145	175
GA	250	230	175	140	130
IL	1,210	1,170	1,120	980	900
IN	950	930	960	880	770
IA	3,100	3,250	3,230	2,830	2,790
KS	305	290	290	260	245
KY	180	185	175	150	120
MI	215	220	220	210	205
MN	1,030	1,030	1,000	1,020	1,080
MO	620	555	715	650	620
NE	920	830	840	800	760
NC	920	1,130	1,420	1,680	1,970
OH	360	320	320	340	250
OK	50	76	140	155	200
PA	235	250	225	225	225
SD	390	370	345	275	240
WI	252	265	190	160	145
Oth Sts ²	963	918	870	832	802
US	12,060	12,144	12,395	11,732	11,627

¹ Weight groups may not add to market due to rounding.

² Individual State estimates not available for the 33 Other States.

**Hogs and Pigs: Market Inventory, 120-179 Pounds by State
and United States, March 1, 1993-97 ¹**

State	1993	1994	1995	1996	1997
	<i>1,000 Head</i>	<i>1,000 Head</i>	<i>1,000 Head</i>	<i>1,000 Head</i>	<i>1,000 Head</i>
AR	160	150	130	135	170
GA	200	180	155	115	110
IL	1,070	1,060	1,040	900	840
IN	770	770	730	680	620
IA	3,000	3,050	2,850	2,450	2,240
KS	270	280	265	220	220
KY	140	140	135	125	105
MI	210	215	210	190	190
MN	770	780	850	870	910
MO	460	470	585	570	540
NE	760	690	700	630	570
NC	770	955	1,200	1,400	1,680
OH	330	275	260	300	280
OK	39	57	95	135	190
PA	200	240	190	195	185
SD	340	295	320	240	200
WI	207	200	165	140	115
Oth Sts ²	784	768	760	726	693
US	10,480	10,575	10,640	10,021	9,858

¹ Weight groups may not add to market due to rounding.

² Individual State estimates not available for the 33 Other States.

**Hogs and Pigs: Market Inventory, 180 Pounds and Over by State
and United States, March 1, 1993-97 ¹**

State	1993	1994	1995	1996	1997
	<i>1,000 Head</i>	<i>1,000 Head</i>	<i>1,000 Head</i>	<i>1,000 Head</i>	<i>1,000 Head</i>
AR	85	115	50	85	145
GA	110	100	115	90	100
IL	890	840	910	770	680
IN	650	625	680	620	530
IA	2,350	2,400	2,360	2,150	1,950
KS	215	220	205	210	245
KY	115	110	120	105	80
MI	180	200	185	175	155
MN	680	700	690	700	720
MO	365	385	425	440	370
NE	630	615	620	550	460
NC	700	880	1,200	1,335	1,450
OH	250	215	230	190	130
OK	43	49	105	220	390
PA	160	220	185	165	140
SD	270	265	270	205	155
WI	171	155	140	110	115
Oth Sts ²	702	684	669	634	622
US	8,566	8,778	9,159	8,754	8,437

¹ Weight groups may not add to market due to rounding.

² Individual State estimates not available for the 33 Other States.

**Hogs and Pigs: Total Inventory Numbers by State
and United States, June 1, 1993-97**

State	1993	1994	1995	1996	1997
	<i>1,000 Head</i>	<i>1,000 Head</i>	<i>1,000 Head</i>	<i>1,000 Head</i>	<i>1,000 Head</i>
AR	860	800	800	770	890
GA	1,030	1,030	770	690	590
IL	5,300	5,700	5,400	4,700	4,450
IN	4,700	4,400	4,350	3,850	3,550
IA	14,900	15,000	14,000	12,500	12,500
KS	1,530	1,480	1,300	1,460	1,480
KY	820	800	770	610	570
MI	1,200	1,250	1,180	1,050	1,020
MN	4,950	4,950	4,900	4,650	5,400
MO	3,300	3,600	3,500	3,500	3,500
NE	4,350	4,300	4,250	3,700	3,600
NC	4,800	6,400	7,600	8,900	9,700
OH	1,840	1,725	1,725	1,500	1,500
OK	245	430	790	1,150	1,500
PA	1,130	1,190	1,030	970	1,020
SD	1,930	1,940	1,570	1,200	1,170
WI	1,215	1,130	890	780	770
Oth Sts ¹	4,695	4,722	4,504	4,058	4,156
US	58,795	60,847	59,329	56,038	57,366

¹ Individual State estimates not available for the 33 Other States.

**Hogs and Pigs: Breeding Inventory Numbers by State
and United States, June 1, 1993-97**

State	1993	1994	1995	1996	1997
	<i>1,000 Head</i>	<i>1,000 Head</i>	<i>1,000 Head</i>	<i>1,000 Head</i>	<i>1,000 Head</i>
AR	120	110	120	110	115
GA	140	140	95	75	75
IL	690	710	680	580	550
IN	560	550	530	460	440
IA	1,700	1,650	1,450	1,250	1,270
KS	185	185	155	185	195
KY	120	115	105	85	70
MI	160	165	150	130	130
MN	610	600	580	540	620
MO	425	500	475	560	455
NE	530	520	510	440	445
NC	560	750	840	935	1,000
OH	240	250	240	210	200
OK	36	80	140	160	210
PA	120	130	105	105	115
SD	235	250	180	140	165
WI	180	160	130	130	130
Oth Sts ¹	649	667	632	587	604
US	7,260	7,532	7,117	6,682	6,789

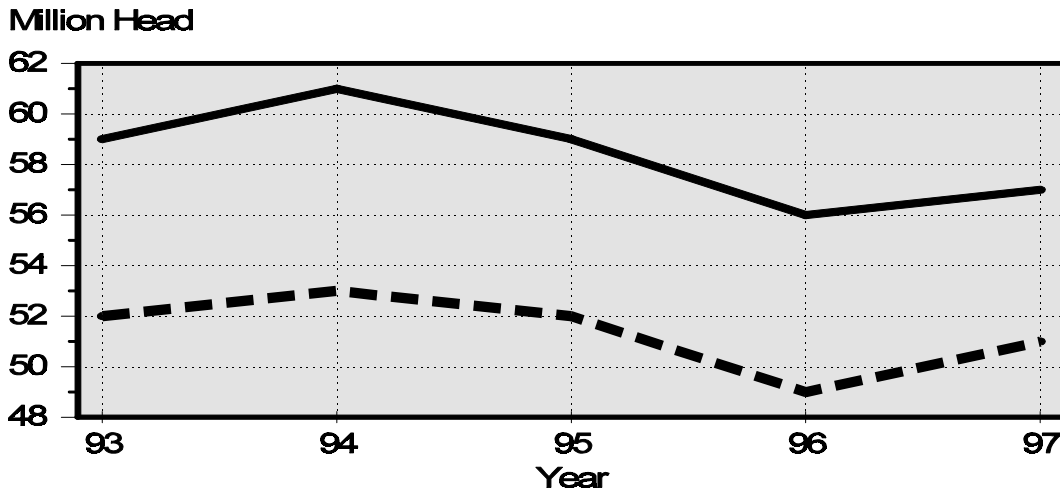
¹ Individual State estimates not available for the 33 Other States.

**Hogs and Pigs: Market Inventory Numbers by State
and United States, June 1, 1993-97**

State	1993	1994	1995	1996	1997
	<i>1,000 Head</i>	<i>1,000 Head</i>	<i>1,000 Head</i>	<i>1,000 Head</i>	<i>1,000 Head</i>
AR	740	690	680	660	775
GA	890	890	675	615	515
IL	4,610	4,990	4,720	4,120	3,900
IN	4,140	3,850	3,820	3,390	3,110
IA	13,200	13,350	12,550	11,250	11,230
KS	1,345	1,295	1,145	1,275	1,285
KY	700	685	665	525	500
MI	1,040	1,085	1,030	920	890
MN	4,340	4,350	4,320	4,110	4,780
MO	2,875	3,100	3,025	2,940	3,045
NE	3,820	3,780	3,740	3,260	3,155
NC	4,240	5,650	6,760	7,965	8,700
OH	1,600	1,475	1,485	1,290	1,300
OK	209	350	650	990	1,290
PA	1,010	1,060	925	865	905
SD	1,695	1,690	1,390	1,060	1,005
WI	1,035	970	760	650	640
Oth Sts ¹	4,047	4,055	3,871	3,471	3,552
US	51,536	53,315	52,211	49,356	50,577

¹ Individual State estimates not available for the 33 Other States.

**June 1 Hog Inventory & Market Hogs
United States**



**Hogs and Pigs: Market Inventory Under 60 Pounds by State
and United States, June 1, 1993-97 ¹**

State	1993	1994	1995	1996	1997
	<i>1,000 Head</i>	<i>1,000 Head</i>	<i>1,000 Head</i>	<i>1,000 Head</i>	<i>1,000 Head</i>
AR	393	365	340	300	240
GA	355	380	255	235	200
IL	1,830	1,970	1,870	1,600	1,570
IN	1,530	1,540	1,435	1,270	1,140
IA	5,400	5,600	5,000	4,340	4,290
KS	505	500	430	500	545
KY	280	275	265	200	195
MI	515	555	510	450	400
MN	1,700	1,700	1,680	1,600	1,850
MO	1,250	1,420	1,350	1,350	1,430
NE	1,550	1,600	1,580	1,390	1,320
NC	1,650	2,260	2,600	3,085	3,350
OH	680	700	700	600	600
OK	64	127	270	420	470
PA	370	380	310	310	330
SD	715	715	630	430	420
WI	425	385	320	260	280
Oth Sts ²	1,527	1,552	1,497	1,305	1,358
US	20,739	22,024	21,042	19,645	19,988

¹ Weight groups may not add to market due to rounding.

² Individual State estimates not available for the 33 Other States.

**Hogs and Pigs: Market Inventory, 60-119 Pounds by State
and United States, June 1, 1993-97 ¹**

State	1993	1994	1995	1996	1997
	<i>1,000 Head</i>	<i>1,000 Head</i>	<i>1,000 Head</i>	<i>1,000 Head</i>	<i>1,000 Head</i>
AR	110	150	130	150	180
GA	245	230	165	145	130
IL	1,160	1,240	1,190	1,070	970
IN	1,100	960	950	870	770
IA	3,300	3,300	3,300	2,950	3,100
KS	350	340	295	305	285
KY	185	180	160	130	120
MI	210	210	200	190	185
MN	1,100	1,090	1,060	1,020	1,210
MO	700	760	725	680	665
NE	1,000	975	900	820	800
NC	1,020	1,310	1,630	1,920	2,170
OH	400	350	340	310	320
OK	58	98	145	190	210
PA	260	260	235	220	230
SD	435	400	315	260	250
WI	260	250	190	150	135
Oth Sts ²	1,005	989	911	816	844
US	12,898	13,092	12,841	12,196	12,574

¹ Weight groups may not add to market due to rounding.

² Individual State estimates not available for the 33 Other States.

**Hogs and Pigs: Market Inventory, 120-179 Pounds by State
and United States, June 1, 1993-97 ¹**

State	1993	1994	1995	1996	1997
	<i>1,000 Head</i>	<i>1,000 Head</i>	<i>1,000 Head</i>	<i>1,000 Head</i>	<i>1,000 Head</i>
AR	177	125	130	110	205
GA	190	180	140	130	110
IL	900	970	940	860	780
IN	850	720	745	670	640
IA	2,400	2,400	2,250	2,280	2,170
KS	285	265	220	265	230
KY	130	125	135	110	105
MI	165	165	165	160	180
MN	840	860	860	820	990
MO	535	515	530	525	550
NE	710	690	650	580	570
NC	840	1,100	1,360	1,630	1,830
OH	290	250	240	240	240
OK	43	64	105	150	200
PA	210	220	200	185	195
SD	300	305	220	200	180
WI	190	185	130	130	115
Oth Sts ²	822	868	760	712	712
US	9,877	10,007	9,780	9,757	10,002

¹ Weight groups may not add to market due to rounding.

² Individual State estimates not available for the 33 Other States.

**Hogs and Pigs: Market Inventory, 180 Pounds and Over by State
and United States, June 1, 1993-97 ¹**

State	1993	1994	1995	1996	1997
	<i>1,000 Head</i>	<i>1,000 Head</i>	<i>1,000 Head</i>	<i>1,000 Head</i>	<i>1,000 Head</i>
AR	60	50	80	100	150
GA	100	100	115	105	75
IL	720	810	720	590	580
IN	660	630	690	580	560
IA	2,100	2,050	2,000	1,680	1,670
KS	205	190	200	205	225
KY	105	105	105	85	80
MI	150	155	155	120	125
MN	700	700	720	670	730
MO	390	405	420	385	400
NE	560	515	610	470	465
NC	730	980	1,170	1,330	1,350
OH	230	175	205	140	140
OK	44	61	130	230	410
PA	170	200	180	150	150
SD	245	270	225	170	155
WI	160	150	120	110	110
Oth Sts ²	693	647	704	639	638
US	8,022	8,193	8,549	7,759	8,013

¹ Weight groups may not add to market due to rounding.

² Individual State estimates not available for the 33 Other States.

**Hogs and Pigs: Total Inventory Numbers by State
and United States, September 1, 1993-97**

State	1993	1994	1995	1996	1997
	<i>1,000 Head</i>	<i>1,000 Head</i>	<i>1,000 Head</i>	<i>1,000 Head</i>	<i>1,000 Head</i>
AR	960	810	790	835	910
GA	1,050	990	730	660	570
IL	5,900	5,850	5,300	4,700	4,600
IN	4,400	4,700	4,350	3,800	3,850
IA	15,100	15,600	14,300	12,700	14,100
KS	1,510	1,420	1,380	1,630	1,550
KY	840	840	800	605	570
MI	1,250	1,300	1,200	1,080	1,100
MN	4,950	5,000	4,950	4,800	5,600
MO	2,950	3,400	3,500	3,500	3,550
NE	4,350	4,450	4,150	3,650	3,550
NC	5,000	6,600	8,100	9,300	9,900
OH	1,760	1,800	1,840	1,550	1,550
OK	245	540	850	1,230	1,600
PA	1,200	1,100	1,030	960	1,100
SD	1,800	1,850	1,550	1,140	1,220
WI	1,210	1,130	850	800	800
Oth Sts ¹	4,694	4,828	4,467	4,021	4,336
US	59,169	62,208	60,137	56,961	60,456

¹ Individual State estimates not available for the 33 Other States.

**Hogs and Pigs: Breeding Inventory Numbers by State
and United States, September 1, 1993-97**

State	1993	1994	1995	1996	1997
	<i>1,000 Head</i>	<i>1,000 Head</i>	<i>1,000 Head</i>	<i>1,000 Head</i>	<i>1,000 Head</i>
AR	125	115	120	110	115
GA	150	125	85	70	65
IL	710	700	630	560	530
IN	535	550	510	450	450
IA	1,700	1,700	1,400	1,200	1,350
KS	175	160	155	195	205
KY	120	120	110	85	70
MI	155	140	130	120	130
MN	610	600	550	550	630
MO	405	450	450	515	435
NE	510	530	500	440	435
NC	590	750	850	950	1,000
OH	230	245	250	220	200
OK	40	105	145	160	215
PA	110	115	105	105	120
SD	230	240	190	130	160
WI	180	160	120	130	135
Oth Sts ¹	633	663	607	587	613
US	7,208	7,468	6,907	6,577	6,858

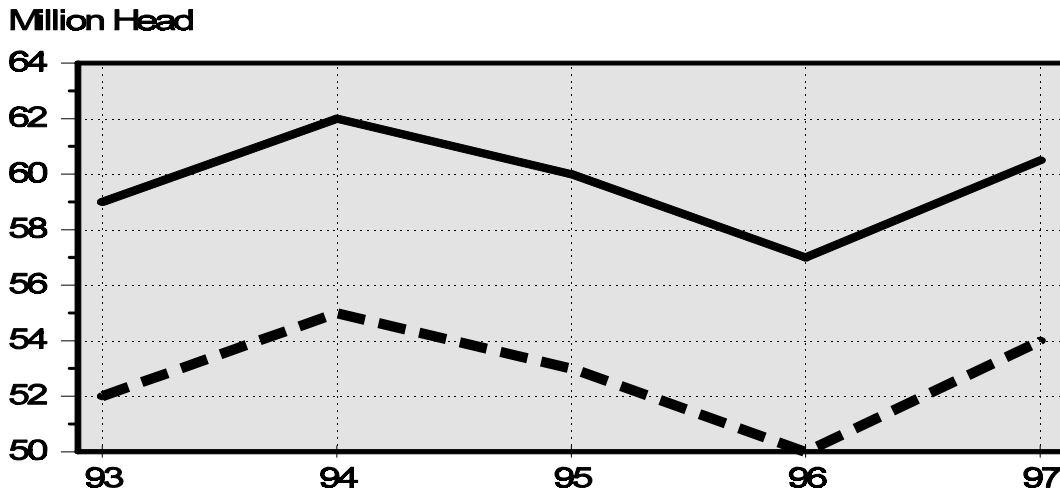
¹ Individual State estimates not available for the 33 Other States.

**Hogs and Pigs: Market Inventory Numbers by State
and United States, September 1, 1993-97**

State	1993	1994	1995	1996	1997
	<i>1,000 Head</i>	<i>1,000 Head</i>	<i>1,000 Head</i>	<i>1,000 Head</i>	<i>1,000 Head</i>
AR	835	695	670	725	795
GA	900	865	645	590	505
IL	5,190	5,150	4,670	4,140	4,070
IN	3,865	4,150	3,840	3,350	3,400
IA	13,400	13,900	12,900	11,500	12,750
KS	1,335	1,260	1,225	1,435	1,345
KY	720	720	690	520	500
MI	1,095	1,160	1,070	960	970
MN	4,340	4,400	4,400	4,250	4,970
MO	2,545	2,950	3,050	2,985	3,115
NE	3,840	3,920	3,650	3,210	3,115
NC	4,410	5,850	7,250	8,350	8,900
OH	1,530	1,555	1,590	1,330	1,350
OK	205	435	705	1,070	1,385
PA	1,090	985	925	855	980
SD	1,570	1,610	1,360	1,010	1,060
WI	1,030	970	730	670	665
Oth Sts ¹	4,061	4,165	3,859	3,434	3,723
US	51,961	54,740	53,229	50,384	53,598

¹ Individual State estimates not available for the 33 Other States.

**September 1 Hog Inventory & Market Hogs
United States**



**Hogs and Pigs: Market Inventory Under 60 Pounds by State
and United States, September 1, 1993-97 ¹**

State	1993	1994	1995	1996	1997
	<i>1,000 Head</i>	<i>1,000 Head</i>	<i>1,000 Head</i>	<i>1,000 Head</i>	<i>1,000 Head</i>
AR	390	332	255	270	265
GA	370	340	250	200	195
IL	1,890	1,750	1,520	1,450	1,540
IN	1,350	1,430	1,305	1,190	1,250
IA	4,600	4,850	4,450	3,730	4,300
KS	490	460	425	605	590
KY	290	290	270	205	195
MI	400	370	340	310	340
MN	1,750	1,740	1,720	1,660	2,020
MO	1,060	1,270	1,360	1,320	1,440
NE	1,650	1,720	1,540	1,340	1,350
NC	1,785	2,330	2,850	3,280	3,500
OH	630	640	660	560	610
OK	66	175	325	440	490
PA	370	345	320	285	370
SD	560	600	495	375	430
WI	415	390	270	275	280
Oth Sts ²	1,566	1,601	1,467	1,287	1,497
US	19,632	20,633	19,822	18,782	20,662

¹ Weight groups may not add to market due to rounding.

² Individual State estimates not available for the 33 Other States.

**Hogs and Pigs: Market Inventory, 60-119 Pounds by State
and United States, September 1, 1993-97 ¹**

State	1993	1994	1995	1996	1997
	<i>1,000 Head</i>	<i>1,000 Head</i>	<i>1,000 Head</i>	<i>1,000 Head</i>	<i>1,000 Head</i>
AR	130	122	150	175	190
GA	220	220	165	145	130
IL	1,260	1,320	1,210	1,020	970
IN	990	1,090	1,005	870	860
IA	3,700	3,900	3,600	3,250	3,650
KS	330	305	305	310	265
KY	195	190	170	130	120
MI	325	340	320	280	260
MN	1,110	1,080	1,070	1,030	1,250
MO	585	665	660	640	670
NE	870	870	860	770	760
NC	1,030	1,370	1,670	1,920	2,160
OH	380	370	380	320	330
OK	52	110	110	190	250
PA	270	245	245	220	260
SD	410	420	350	260	260
WI	265	245	180	155	150
Oth Sts ²	967	1,021	897	813	853
US	13,089	13,883	13,347	12,498	13,388

¹ Weight groups may not add to market due to rounding.

² Individual State estimates not available for the 33 Other States.

**Hogs and Pigs: Market Inventory, 120-179 Pounds by State
and United States, September 1, 1993-97 ¹**

State	1993	1994	1995	1996	1997
	<i>1,000 Head</i>	<i>1,000 Head</i>	<i>1,000 Head</i>	<i>1,000 Head</i>	<i>1,000 Head</i>
AR	175	160	170	145	195
GA	180	175	125	130	110
IL	1,100	1,130	1,060	890	820
IN	895	950	850	730	680
IA	2,800	2,850	2,700	2,470	2,650
KS	295	275	280	290	255
KY	135	135	135	100	105
MI	200	250	220	200	200
MN	790	850	860	830	940
MO	490	545	570	590	520
NE	740	750	740	650	580
NC	885	1,180	1,450	1,750	1,850
OH	310	335	340	250	250
OK	43	71	105	185	230
PA	260	215	190	190	205
SD	350	355	310	210	200
WI	190	180	150	125	125
Oth Sts ²	851	817	789	683	758
US	10,689	11,223	11,044	10,418	10,673

¹ Weight groups may not add to market due to rounding.

² Individual State estimates not available for the 33 Other States.

**Hogs and Pigs: Market Inventory, 180 Pounds and Over by State
and United States, September 1, 1993-97 ¹**

State	1993	1994	1995	1996	1997
	<i>1,000 Head</i>	<i>1,000 Head</i>	<i>1,000 Head</i>	<i>1,000 Head</i>	<i>1,000 Head</i>
AR	140	81	95	135	145
GA	130	130	105	115	70
IL	940	950	880	780	740
IN	630	680	680	560	610
IA	2,300	2,300	2,150	2,050	2,150
KS	220	220	215	230	235
KY	100	105	115	85	80
MI	170	200	190	170	170
MN	690	730	750	730	760
MO	410	470	460	435	485
NE	580	580	510	450	425
NC	710	970	1,280	1,400	1,390
OH	210	210	210	200	160
OK	44	79	165	255	415
PA	190	180	170	160	145
SD	250	235	205	165	170
WI	160	155	130	115	110
Oth Sts ²	677	727	707	652	615
US	8,551	9,002	9,017	8,687	8,875

¹ Weight groups may not add to market due to rounding.

² Individual State estimates not available for the 33 Other States.

Farrowings: Number of Sows by State and United States, Dec-Feb 1993-97

State	December ¹ - February				
	1993	1994	1995	1996	1997
	<i>1,000 Head</i>	<i>1,000 Head</i>	<i>1,000 Head</i>	<i>1,000 Head</i>	<i>1,000 Head</i>
AR	43	51	53	54	52
GA	57	47	39	38	30
IL	270	265	250	210	200
IN	225	210	220	195	180
IA	650	650	610	525	450
KS	75	68	63	64	80
KY	46	45	45	38	31
MI	47	47	42	40	40
MN	255	260	250	240	230
MO	145	175	190	185	185
NE	220	215	195	175	170
NC	235	310	385	450	500
OH	88	85	79	80	75
OK	14	21	39	62	78
PA	44	47	46	46	50
SD	83	81	80	62	60
WI	67	65	55	43	46
Oth Sts ²	248	238	240	228	227
US	2,812	2,880	2,881	2,735	2,684

¹ December preceding year.

² Individual State estimates not available for the 33 other States.

Farrowings: Pigs per Litter by State and United States, Dec-Feb 1993-97

State	December ¹ - February				
	1993	1994	1995	1996	1997
	<i>Number</i>	<i>Number</i>	<i>Number</i>	<i>Number</i>	<i>Number</i>
AR	8.90	9.20	9.60	9.10	8.50
GA	7.70	7.50	7.85	8.00	8.05
IL	7.90	7.95	7.80	8.20	8.50
IN	8.15	7.90	8.10	8.20	8.50
IA	8.20	7.90	8.30	8.25	8.50
KS	8.20	7.85	8.10	8.20	9.10
KY	7.60	7.30	7.35	8.10	8.30
MI	7.90	7.90	8.10	8.20	8.40
MN	8.40	8.50	8.30	8.80	8.70
MO	7.80	8.10	8.40	8.35	8.80
NE	8.20	8.20	8.30	8.50	8.45
NC	8.70	8.60	8.50	8.75	8.90
OH	8.00	7.80	8.00	8.20	8.30
OK	8.00	8.80	9.50	9.20	9.50
PA	8.40	8.60	8.30	8.60	8.50
SD	8.15	7.95	8.10	8.50	8.50
WI	7.80	8.00	7.90	8.00	8.40
Oth Sts ²	7.80	7.94	8.00	8.20	8.38
US	8.14	8.10	8.24	8.43	8.63

¹ December preceding year.

² Individual State estimates not available for the 33 other States.

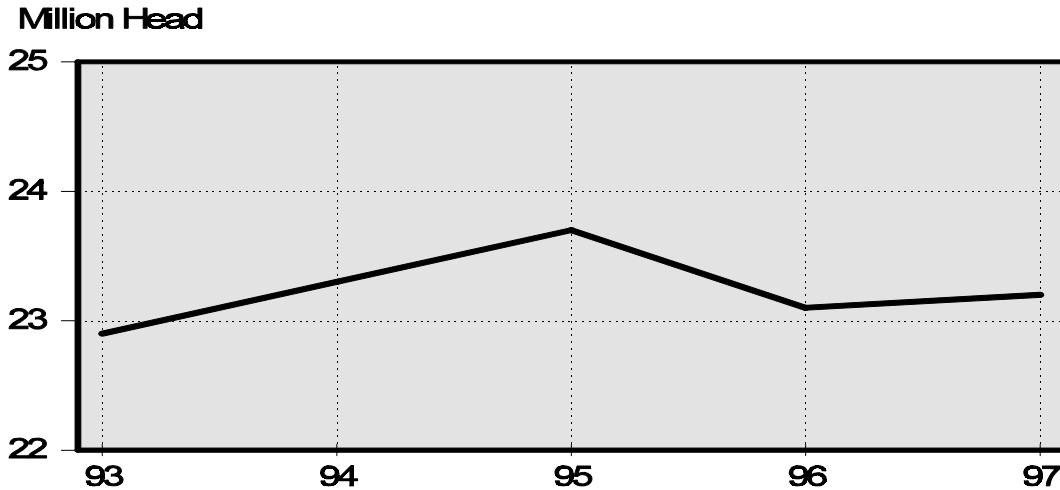
Farrowings: Pig Crop by State and United States, Dec-Feb 1993-97

State	December ¹ - February				
	1993	1994	1995	1996	1997
	<i>1,000 Head</i>	<i>1,000 Head</i>	<i>1,000 Head</i>	<i>1,000 Head</i>	<i>1,000 Head</i>
AR	383	469	509	491	442
GA	439	353	306	304	242
IL	2,133	2,107	1,950	1,722	1,700
IN	1,834	1,659	1,782	1,599	1,530
IA	5,330	5,135	5,063	4,331	3,825
KS	615	534	510	525	728
KY	350	329	331	308	257
MI	371	371	340	328	336
MN	2,142	2,210	2,075	2,112	2,001
MO	1,131	1,418	1,596	1,545	1,628
NE	1,804	1,763	1,619	1,488	1,437
NC	2,045	2,666	3,273	3,938	4,450
OH	704	663	632	656	623
OK	112	185	371	570	741
PA	370	404	382	396	425
SD	676	644	648	527	510
WI	523	520	435	344	386
Oth Sts ²	1,935	1,889	1,920	1,870	1,903
US	22,897	23,319	23,742	23,054	23,164

¹ December preceding year.

² Individual State estimates not available for the 33 other States.

**December-February Pig Crop 1993-97
United States**



Farrowings: Number of Sows by State and United States, Mar-May 1993-97

State	March - May				
	1993	1994	1995	1996	1997
	<i>1,000 Head</i>	<i>1,000 Head</i>	<i>1,000 Head</i>	<i>1,000 Head</i>	<i>1,000 Head</i>
AR	45	54	52	57	60
GA	53	53	41	40	30
IL	315	330	295	250	240
IN	245	245	230	195	180
IA	810	810	650	550	510
KS	78	78	66	73	90
KY	47	45	43	34	31
MI	80	87	82	65	55
MN	275	270	260	240	255
MO	185	200	205	200	200
NE	230	235	230	190	170
NC	250	340	400	460	515
OH	95	98	100	88	85
OK	16	33	53	76	87
PA	46	50	44	46	48
SD	117	118	100	74	70
WI	70	63	58	51	47
Oth Sts ¹	269	268	256	241	238
US	3,226	3,377	3,165	2,930	2,911

¹ Individual State estimates not available for the 33 other States.

Farrowings: Pigs per Litter by State and United States, Mar-May 1993-97

State	March - May				
	1993	1994	1995	1996	1997
	<i>Number</i>	<i>Number</i>	<i>Number</i>	<i>Number</i>	<i>Number</i>
AR	9.80	8.80	9.10	8.50	8.30
GA	7.90	8.10	8.10	8.45	8.35
IL	7.75	8.10	8.10	8.40	8.40
IN	8.30	8.10	8.20	8.30	8.40
IA	8.10	8.30	8.30	8.40	8.60
KS	7.90	8.40	7.95	8.40	9.20
KY	7.75	7.75	7.60	8.25	8.50
MI	7.80	7.90	7.70	8.10	8.40
MN	8.30	8.50	8.70	8.70	8.85
MO	7.85	8.00	8.50	8.40	8.90
NE	8.20	8.25	8.25	8.50	8.50
NC	8.55	8.70	8.65	8.70	8.90
OH	8.10	8.20	8.30	8.25	8.40
OK	7.80	8.50	9.40	9.50	9.50
PA	8.70	8.60	8.40	8.40	8.60
SD	8.25	8.10	8.10	8.20	8.40
WI	7.90	8.10	7.90	8.20	8.50
Oth Sts ¹	7.96	8.02	8.00	8.32	8.42
US	8.13	8.26	8.32	8.48	8.67

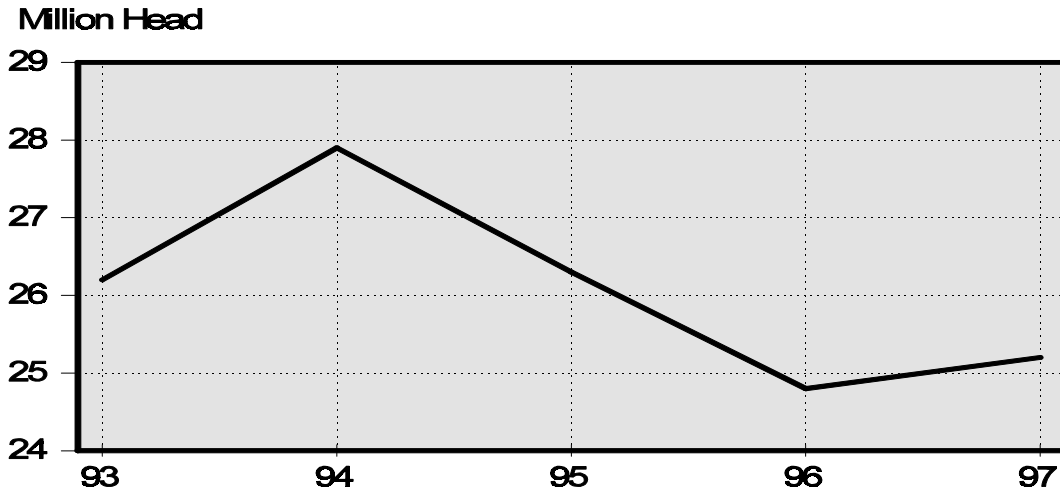
¹ Individual State estimates not available for the 33 other States.

Farrowings: Pig Crop by State and United States, Mar-May 1993-97 ¹

State	March - May				
	1993	1994	1995	1996	1997
	<i>1,000 Head</i>	<i>1,000 Head</i>	<i>1,000 Head</i>	<i>1,000 Head</i>	<i>1,000 Head</i>
AR	441	475	473	485	498
GA	419	429	332	338	251
IL	2,441	2,673	2,390	2,100	2,016
IN	2,034	1,985	1,886	1,619	1,512
IA	6,561	6,723	5,395	4,620	4,386
KS	616	655	525	613	828
KY	364	349	327	281	264
MI	624	687	631	527	462
MN	2,283	2,295	2,262	2,088	2,257
MO	1,452	1,600	1,743	1,680	1,780
NE	1,886	1,939	1,898	1,615	1,445
NC	2,138	2,958	3,460	4,002	4,584
OH	770	804	830	726	714
OK	125	281	498	722	827
PA	400	430	370	386	413
SD	965	956	810	607	588
WI	553	510	458	418	400
Oth Sts ¹	2,141	2,149	2,047	2,006	2,004
US	26,213	27,898	26,335	24,833	25,229

¹ Individual State estimates not available for the 33 other States.

**March-May Pig Crop 1993-97
United States**



Farrowings: Number of Sows by State and United States, Jun-Aug 1993-97

State	June - August				
	1993	1994	1995	1996	1997
	<i>1,000 Head</i>	<i>1,000 Head</i>	<i>1,000 Head</i>	<i>1,000 Head</i>	<i>1,000 Head</i>
AR	50	47	54	54	58
GA	53	50	38	30	29
IL	300	285	240	220	220
IN	215	225	210	180	190
IA	700	705	625	480	540
KS	73	68	66	81	95
KY	47	46	44	33	31
MI	68	65	60	52	54
MN	260	255	250	225	260
MO	165	185	200	190	195
NE	210	220	195	165	165
NC	265	350	420	470	515
OH	93	98	95	85	90
OK	13	35	55	79	98
PA	47	49	42	43	49
SD	86	95	79	54	68
WI	72	66	56	44	48
Oth Sts ¹	261	264	245	233	241
US	2,978	3,108	2,974	2,718	2,946

¹ Individual State estimates not available for the 33 other States.

Farrowings: Pigs per Litter by State and United States, Jun-Aug 1993-97

State	June - August				
	1993	1994	1995	1996	1997
	<i>Number</i>	<i>Number</i>	<i>Number</i>	<i>Number</i>	<i>Number</i>
AR	8.90	9.20	9.20	8.50	8.60
GA	8.05	7.75	8.15	8.40	8.40
IL	7.70	7.90	8.00	8.50	8.40
IN	7.95	8.25	8.10	8.30	8.40
IA	8.00	8.10	8.20	8.50	8.80
KS	8.05	8.30	8.20	8.70	9.20
KY	7.85	7.90	7.70	8.25	8.35
MI	7.90	7.70	8.10	8.30	8.70
MN	8.40	8.50	8.65	8.70	8.85
MO	7.80	8.20	8.60	8.50	8.90
NE	8.20	8.25	8.35	8.55	8.55
NC	8.55	8.65	8.65	8.75	8.90
OH	8.30	8.00	8.40	8.20	8.30
OK	9.00	8.90	9.30	9.30	9.40
PA	8.80	8.50	8.50	8.50	8.70
SD	8.15	8.15	8.20	8.50	8.50
WI	7.90	7.90	7.70	8.40	8.50
Oth Sts ¹	7.93	8.06	8.10	8.39	8.47
US	8.09	8.21	8.34	8.55	8.72

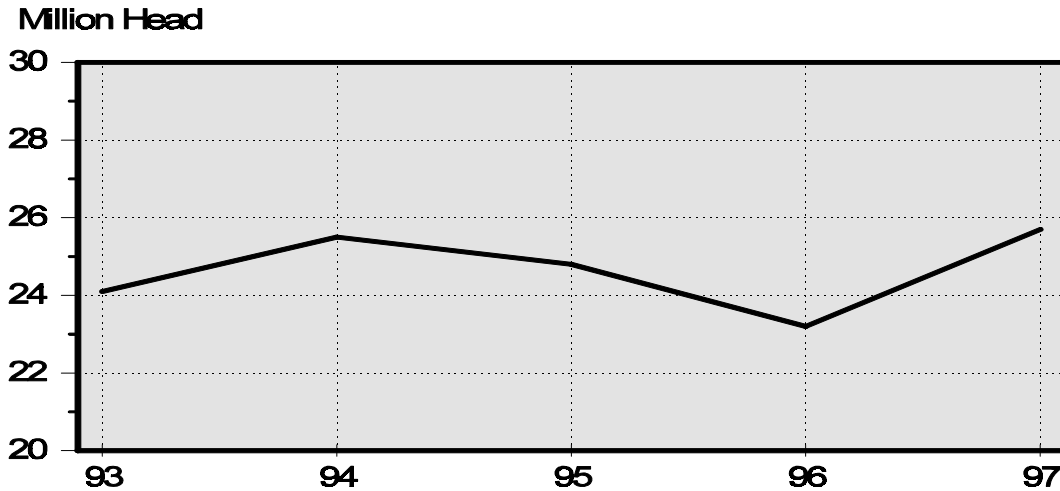
¹ Individual State estimates not available for the 33 other States.

Farrowings: Pig Crop by State and United States, Jun-Aug 1993-97

State	June - August				
	1993	1994	1995	1996	1997
	<i>1,000 Head</i>	<i>1,000 Head</i>	<i>1,000 Head</i>	<i>1,000 Head</i>	<i>1,000 Head</i>
AR	445	432	497	459	499
GA	427	388	310	252	244
IL	2,310	2,252	1,920	1,870	1,848
IN	1,709	1,856	1,701	1,494	1,596
IA	5,600	5,711	5,125	4,080	4,752
KS	588	564	541	705	874
KY	369	363	339	272	259
MI	537	501	486	432	470
MN	2,184	2,168	2,163	1,958	2,301
MO	1,287	1,517	1,720	1,615	1,736
NE	1,722	1,815	1,628	1,411	1,411
NC	2,266	3,028	3,633	4,113	4,584
OH	772	784	798	697	747
OK	117	312	512	735	921
PA	414	417	357	366	426
SD	701	774	648	459	578
WI	569	521	431	370	408
Oth Sts ¹	2,071	2,127	1,985	1,956	2,042
US	24,088	25,530	24,794	23,244	25,696

¹ Individual State estimates not available for the 33 other States.

**June-August Pig Crop, 1993-97
United States**



Farrowings: Number of Sows by State and United States, Sep-Nov 1993-97

State	September - November				
	1993	1994	1995	1996	1997
	<i>1,000 Head</i>	<i>1,000 Head</i>	<i>1,000 Head</i>	<i>1,000 Head</i>	<i>1,000 Head</i>
AR	51	51	50	52	55
GA	48	48	39	31	25
IL	295	270	230	220	240
IN	215	215	190	180	190
IA	740	670	590	480	520
KS	70	68	61	90	95
KY	47	42	42	32	31
MI	56	60	45	45	48
MN	245	250	245	225	260
MO	185	200	210	195	200
NE	210	215	190	170	165
NC	290	370	420	475	510
OH	80	92	87	80	90
OK	18	36	63	78	99
PA	47	46	42	45	48
SD	94	96	75	65	70
WI	66	58	55	45	43
Oth Sts ¹	241	244	235	223	250
US	2,998	3,031	2,869	2,731	2,939

¹ Individual State estimates not available for the 33 other States.

Farrowings: Pigs per Litter by State and United States, Sep-Nov 1993-97

State	September - November				
	1993	1994	1995	1996	1997
	<i>Number</i>	<i>Number</i>	<i>Number</i>	<i>Number</i>	<i>Number</i>
AR	8.90	8.50	9.30	8.40	8.40
GA	7.85	7.95	8.35	8.30	8.35
IL	7.80	7.90	8.00	8.35	8.40
IN	8.10	8.10	8.20	8.35	8.50
IA	7.90	8.00	8.25	8.45	8.60
KS	7.80	8.00	8.30	9.00	9.20
KY	7.70	7.80	8.10	8.30	8.35
MI	8.00	8.00	8.00	8.30	8.70
MN	8.20	8.50	8.70	8.80	8.90
MO	8.00	8.40	8.30	8.60	8.90
NE	8.10	8.20	8.45	8.40	8.50
NC	8.60	8.45	8.55	8.75	8.85
OH	8.10	8.30	8.20	8.30	8.60
OK	8.70	9.20	9.00	9.50	9.30
PA	8.70	8.30	8.50	8.50	8.70
SD	8.00	8.05	8.20	8.25	8.60
WI	7.90	7.90	7.90	8.10	8.30
Oth Sts ¹	7.80	7.89	8.18	8.33	8.34
US	8.05	8.16	8.35	8.54	8.67

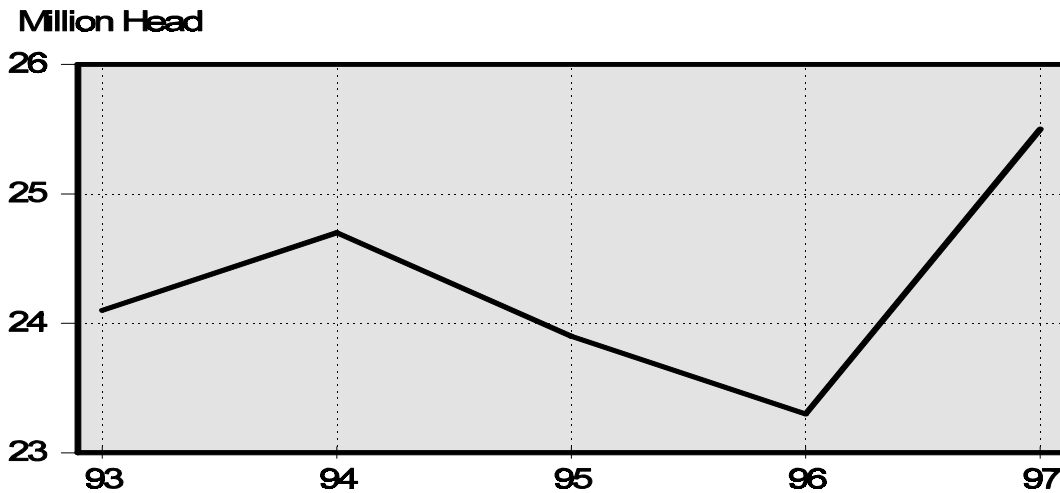
¹ Individual State estimates not available for the 33 other States.

Farrowings: Pig Crop by State and United States, Sep-Nov 1993-97

State	September - November				
	1993	1994	1995	1996	1997
	<i>1,000 Head</i>	<i>1,000 Head</i>	<i>1,000 Head</i>	<i>1,000 Head</i>	<i>1,000 Head</i>
AR	454	434	465	437	462
GA	377	382	326	257	209
IL	2,301	2,133	1,840	1,837	2,016
IN	1,742	1,742	1,558	1,503	1,615
IA	5,846	5,360	4,868	4,056	4,472
KS	546	544	506	810	874
KY	362	328	340	266	259
MI	448	480	360	374	418
MN	2,009	2,125	2,132	1,980	2,314
MO	1,480	1,680	1,743	1,677	1,780
NE	1,701	1,763	1,606	1,428	1,403
NC	2,494	3,127	3,591	4,156	4,514
OH	648	764	713	664	774
OK	157	331	567	741	921
PA	409	382	357	383	418
SD	752	773	615	536	602
WI	521	458	435	365	357
Oth Sts ¹	1,881	1,926	1,923	1,857	2,086
US	24,128	24,732	23,945	23,327	25,494

¹ Individual State estimates not available for the 33 other States.

**September-November Pig Crop. 1993-97
United States**



**Annual Farrowings: Number of Sows, by State and United States,
December-November 1993-97^{1 2}**

State	1993	1994	1995	1996	1997
	<i>1,000 Head</i>	<i>1,000 Head</i>	<i>1,000 Head</i>	<i>1,000 Head</i>	<i>1,000 Head</i>
AL	64	54	52	40	37
AK	0.42	0.45	0.50	0.43	0.50
AZ	31	38	33	35	36
AR	189	203	209	217	225
CA	58	53	48	42	45
CO	104	137	138	167	200
CT	1.30	1.20	0.95	1.20	1.10
DE	8.0	9.0	8.0	6.6	6.1
FL	30.0	28.0	26.0	23.0	17.5
GA	211	198	157	139	114
HI	7.2	7.5	7.3	6.8	5.6
ID	12.0	12.0	10.0	7.2	6.9
IL	1,180	1,150	1,015	900	900
IN	900	895	850	750	740
IA	2,900	2,835	2,475	2,035	2,020
KS	296	282	256	308	360
KY	187	178	174	137	124
LA	12.0	13.0	14.2	11.1	8.8
ME	2.00	2.10	2.20	1.40	1.60
MD	40	39	22	18	19
MA	4.20	4.00	3.80	3.30	2.80
MI	251	259	229	202	197
MN	1,035	1,035	1,005	930	1,005
MS	34.0	37.0	49.0	43.5	47.5
MO	680	760	805	770	780
MT	42	46	44	37	36
NE	870	885	810	700	670
NV	2.4	2.5	2.2	1.9	2.4
NH	1.20	0.80	0.60	0.70	0.90
NJ	4.0	4.0	4.0	2.2	3.2
NM	8.0	7.0	4.0	1.5	1.2
NY	22	14	15	16	16
NC	1,040	1,370	1,625	1,855	2,040
ND	66	49	54	42	37
OH	356	373	361	333	340
OK	61	125	210	295	362
OR	16.0	16.0	11.0	7.5	8.0
PA	184	192	174	180	195
RI	1.20	0.90	0.70	0.80	0.80
SC	85	77	83	78	73
SD	380	390	334	255	268
TN	127	127	117	97	73
TX	111	111	110	95	104
UT	9.0	8.0	10.1	28.0	50.5
VT	1.20	0.80	0.60	0.60	0.70
VA	92	89	76	78	73
WA	8.0	8.0	9.0	10.0	8.0
WV	8.0	8.0	5.6	4.6	4.0
WI	275	252	224	183	184
WY	8.0	10.0	13.6	17.1	28.0
US	12,015	12,396	11,888	11,113	11,479

¹ December preceding year.

² May not add due to rounding.

**Annual Farrowings: Pigs Per Litter by State and United States,
December-November 1993-97^{1 2}**

State	1993	1994	1995	1996	1997
	<i>Number</i>	<i>Number</i>	<i>Number</i>	<i>Number</i>	<i>Number</i>
AL	7.77	7.70	7.75	7.78	7.76
AK	8.10	8.24	7.22	7.67	7.76
AZ	8.26	7.87	8.30	8.46	8.53
AR	9.12	8.92	9.30	8.63	8.45
CA	8.34	8.74	8.79	9.29	9.24
CO	8.43	8.38	8.14	8.59	8.50
CT	8.10	7.50	8.63	8.50	7.20
DE	8.63	8.44	6.38	8.18	8.85
FL	7.27	7.04	7.23	7.00	7.49
GA	7.88	7.84	8.11	8.28	8.30
HI	6.81	6.93	6.99	6.62	6.96
ID	8.00	7.92	8.00	7.50	7.97
IL	7.78	7.97	7.98	8.37	8.42
IN	8.13	8.09	8.15	8.29	8.45
IA	8.05	8.09	8.26	8.40	8.63
KS	7.99	8.15	8.13	8.61	9.18
KY	7.73	7.69	7.68	8.23	8.38
LA	6.58	7.38	7.61	7.57	7.05
ME	7.10	7.60	7.00	6.80	7.50
MD	8.45	8.18	7.55	8.50	8.63
MA	7.14	7.00	7.89	7.27	7.14
MI	7.89	7.87	7.93	8.22	8.56
MN	8.33	8.50	8.59	8.75	8.83
MS	7.71	7.92	7.92	8.05	8.51
MO	7.87	8.18	8.45	8.46	8.88
MT	8.45	8.39	8.45	8.73	8.89
NE	8.18	8.23	8.33	8.49	8.50
NV	7.22	7.42	8.09	7.89	8.33
NH	7.70	6.60	7.70	7.00	8.20
NJ	6.75	6.50	6.75	7.39	6.88
NM	7.50	7.57	6.75	7.00	7.50
NY	7.36	7.29	7.60	8.38	8.50
NC	8.60	8.60	8.59	8.74	8.89
ND	7.74	8.20	8.43	8.33	8.49
OH	8.13	8.08	8.24	8.24	8.41
OK	8.38	8.87	9.28	9.38	9.42
OR	6.88	6.94	7.82	8.40	8.00
PA	8.66	8.51	8.43	8.51	8.63
RI	5.70	6.10	6.40	6.69	7.00
SC	7.72	7.90	8.34	8.29	8.32
SD	8.14	8.07	8.15	8.35	8.50
TN	7.43	7.69	7.91	7.88	8.16
TX	7.88	8.23	7.89	8.47	8.26
UT	6.56	7.25	8.12	8.36	8.63
VT	7.80	7.30	7.50	8.80	8.80
VA	8.25	8.01	8.42	8.46	8.60
WA	8.00	7.13	8.56	8.80	8.63
WV	6.38	6.38	7.68	7.83	7.75
WI	7.88	7.97	7.85	8.18	8.43
WY	8.75	8.80	9.04	8.77	8.68
US	8.10	8.19	8.31	8.50	8.68

¹ December preceding year.

² May not add due to rounding.

**Annual Farrowings: Pig Crop by State and United States,
December-November 1993-97^{1 2}**

State	1993	1994	1995	1996	1997
	<i>1,000 Head</i>	<i>1,000 Head</i>	<i>1,000 Head</i>	<i>1,000 Head</i>	<i>1,000 Head</i>
AL	497	416	403	311	287
AK	3.4	3.7	3.6	3.3	3.9
AZ	256	299	274	296	307
AR	1,723	1,810	1,944	1,872	1,901
CA	484	463	422	390	416
CO	877	1,148	1,123	1,434	1,700
CT	10.5	9.0	8.2	10.2	7.9
DE	69	76	51	54	54
FL	218	197	188	161	131
GA	1,662	1,552	1,274	1,151	946
HI	49	52	51	45	39
ID	96	95	80	54	55
IL	9,185	9,165	8,100	7,529	7,580
IN	7,319	7,242	6,927	6,215	6,253
IA	23,337	22,929	20,451	17,087	17,435
KS	2,365	2,297	2,082	2,653	3,304
KY	1,445	1,369	1,337	1,127	1,039
LA	79	96	108	84	62
ME	14.2	16.0	15.4	9.5	12.0
MD	338	319	166	153	164
MA	30.0	28.0	30.0	24.0	20.0
MI	1,980	2,039	1,817	1,661	1,686
MN	8,618	8,798	8,632	8,138	8,873
MS	262	293	388	350	404
MO	5,350	6,215	6,802	6,517	6,924
MT	355	386	372	323	320
NE	7,113	7,280	6,751	5,942	5,696
NV	17.3	18.6	17.8	15.0	20.0
NH	9.2	5.3	4.6	4.9	7.4
NJ	27.0	26.0	27.0	15.9	22.0
NM	60.0	53.0	27.0	10.5	9.0
NY	162	102	114	134	136
NC	8,943	11,779	13,957	16,209	18,132
ND	511	402	455	350	314
OH	2,894	3,015	2,973	2,743	2,858
OK	511	1,109	1,948	2,768	3,410
OR	110	111	86	63	64
PA	1,593	1,633	1,466	1,531	1,682
RI	6.8	5.5	4.5	5.0	5.3
SC	656	608	692	647	607
SD	3,094	3,147	2,721	2,129	2,278
TN	943	976	926	764	596
TX	875	913	868	805	859
UT	59	58	82	234	436
VT	9.4	5.8	4.5	5.3	6.2
VA	759	713	640	660	628
WA	64	57	77	88	69
WV	51.0	51.0	43.0	36.0	31.0
WI	2,166	2,009	1,759	1,497	1,551
WY	70	88	123	150	243
US	97,326	101,478	98,816	94,459	99,584

¹ December preceding year.

² May not add due to rounding.

**Hogs and Pigs: Number of Operations with Hogs
by State and United States, 1993-97 ¹**

State	1993	1994	1995	1996	1997
	<i>Number</i>	<i>Number</i>	<i>Number</i>	<i>Number</i>	<i>Number</i>
AL	2,500	2,500	2,100	1,600	1,100
AK	50	50	50	50	50
AZ	400	350	310	280	250
AR	2,100	1,950	1,790	1,620	1,460
CA	4,000	3,700	3,200	2,600	2,000
CO	1,600	1,600	1,400	1,300	1,200
CT	450	500	400	300	250
DE	370	360	200	200	180
FL	4,400	3,800	3,200	2,400	2,000
GA	6,000	4,500	3,000	2,200	2,000
HI	350	300	300	250	250
ID	1,100	1,100	1,100	1,100	900
IL	11,500	11,000	9,600	8,800	7,500
IN	12,300	10,300	9,000	6,900	6,500
IA	33,000	29,000	25,000	20,500	18,000
KS	5,100	4,500	3,800	3,600	3,000
KY	5,800	4,500	3,800	2,500	2,100
LA	1,500	1,300	1,200	1,000	950
ME	1,400	1,300	1,300	1,000	600
MD	1,000	1,000	800	580	600
MA	800	800	700	500	450
MI	5,000	5,000	4,700	4,400	3,000
MN	12,500	11,500	10,500	9,500	9,000
MS	3,500	2,800	2,300	2,000	2,000
MO	11,000	10,500	8,500	7,000	5,500
MT	1,100	900	900	750	650
NE	11,500	11,000	10,000	8,500	6,500
NV	140	140	140	140	110
NH	550	450	400	300	250
NJ	700	650	650	600	550
NM	600	600	500	500	400
NY	2,700	2,200	1,800	1,600	1,500
NC	7,500	7,000	6,000	5,000	4,500
ND	1,800	1,500	1,500	1,300	1,000
OH	12,000	10,000	8,500	7,500	6,800
OK	3,500	3,500	3,400	3,400	3,100
OR	2,000	1,800	1,600	1,500	1,400
PA	5,400	5,000	4,600	4,200	3,500
RI	100	80	60	60	60
SC	3,000	2,500	2,000	1,600	1,300
SD	7,100	6,500	5,400	3,500	3,000
TN	6,500	5,500	4,000	3,000	2,500
TX	8,000	8,000	7,000	6,700	5,500
UT	800	800	700	600	500
VT	750	500	400	300	300
VA	2,200	2,000	1,800	1,700	1,600
WA	1,800	1,600	1,400	1,200	1,000
WV	1,700	1,600	1,400	1,300	1,100
WI	8,400	7,600	5,700	4,600	3,900
WY	500	400	350	350	300
US	218,060	196,030	168,450	142,380	122,160

¹ An operation is any place having one or more hogs or pigs on hand at any time during the year.

**Hogs and Pigs: Number of Operations by Size Group,
State, and United States, 1993-97 ¹**

State	Operations Having:				
	1-99 Head				
	1993	1994	1995	1996	1997
	<i>Number</i>	<i>Number</i>	<i>Number</i>	<i>Number</i>	<i>Number</i>
AR	1,630	1,480	1,330	1,180	1,030
GA	4,480	3,180	2,000	1,450	1,430
IL	4,000	3,800	3,200	2,900	2,600
IN	6,000	4,800	3,700	2,900	2,600
IA	8,000	6,800	5,400	4,400	3,400
KS	2,700	2,300	1,800	1,900	1,600
KY	4,500	3,200	2,700	1,800	1,500
MI	3,400	3,400	3,200	3,200	2,050
MN	4,500	4,000	3,600	3,200	3,000
MO	5,500	5,300	4,400	3,600	2,800
NE	4,000	3,600	3,200	2,700	1,900
NC	5,700	5,000	4,000	3,200	2,700
OH	9,000	6,800	5,900	5,200	4,600
OK	3,150	3,200	3,100	3,100	2,800
PA	4,000	3,600	3,300	3,000	2,500
SD	2,700	2,300	1,900	1,200	1,050
WI	5,500	5,000	3,900	3,200	2,600
Oth Sts ²	52,400	47,200	40,100	33,800	29,300
US	131,160	114,960	96,730	81,930	69,460
	100-499 Head				
	<i>Number</i>	<i>Number</i>	<i>Number</i>	<i>Number</i>	<i>Number</i>
AR	205	195	170	145	125
GA	1,100	930	700	500	350
IL	4,400	4,000	3,700	3,400	2,500
IN	3,800	3,300	3,300	2,100	2,100
IA	15,000	12,300	11,000	8,800	6,900
KS	1,800	1,600	1,500	1,200	870
KY	930	900	720	390	330
MI	1,100	1,100	1,000	750	510
MN	5,100	4,500	4,000	3,500	3,200
MO	3,800	3,600	2,700	2,300	1,690
NE	5,200	5,200	4,600	3,900	2,800
NC	580	550	360	230	200
OH	2,100	2,400	1,800	1,500	1,300
OK	280	220	210	170	130
PA	800	700	680	600	500
SD	3,300	3,100	2,600	1,600	1,300
WI	2,300	2,000	1,400	1,000	890
Oth Sts ²	4,500	4,100	3,700	3,500	2,400
US	56,295	50,695	44,140	35,585	28,095

See footnotes at end of table.

--continued

**Hogs and Pigs: Number of Operations by Size Group,
State, and United States, 1993-97 ¹ (continued)**

State	Operations Having:				
	500-999 Head				
	1993	1994	1995	1996	1997
	<i>Number</i>	<i>Number</i>	<i>Number</i>	<i>Number</i>	<i>Number</i>
AR	60	65	70	75	80
GA	220	190	140	110	90
IL	1,800	1,900	1,500	1,300	1,200
IN	1,400	1,200	1,000	970	840
IA	6,400	6,000	5,350	4,300	3,900
KS	390	360	270	310	300
KY	200	230	210	165	130
MI	220	220	230	170	180
MN	1,800	1,800	1,600	1,500	1,400
MO	1,100	950	850	670	510
NE	1,550	1,400	1,350	1,100	1,050
NC	280	280	220	150	140
OH	600	480	500	500	530
OK	20	20	20	30	40
PA	300	360	300	300	200
SD	750	760	600	440	370
WI	430	420	230	220	230
Oth Sts ²	750	680	720	650	480
US	18,270	17,315	15,160	12,960	11,670
	1,000-1,999 Head				
	<i>Number</i>	<i>Number</i>	<i>Number</i>	<i>Number</i>	<i>Number</i>
AR	100	100	100	95	95
GA	100	100	80	70	60
IL	840	820	770	780	690
IN	640	640	580	510	520
IA	2,600	2,800	2,300	2,100	2,250
KS	120	140	130	90	110
KY	110	110	120	95	90
MI	150	140	140	150	130
MN	800	800	850	800	800
MO	450	450	370	270	270
NE	500	550	600	550	480
NC	320	350	320	270	240
OH	250	250	220	190	250
OK	25	30	30	40	50
PA	180	200	190	170	150
SD	250	230	180	150	150
WI	120	130	120	120	120
Oth Sts ²	400	380	320	380	300
US	7,955	8,220	7,420	6,830	6,755

See footnotes at end of table.

--continued

**Hogs and Pigs: Number of Operations by Size Group,
State, and United States, 1993-97 ¹**

State	Operations Having:				
	2,000-4,999 Head				
	1993	1994	1995	1996	1997
	<i>Number</i>	<i>Number</i>	<i>Number</i>	<i>Number</i>	<i>Number</i>
AR	75	75	85	85	85
GA	80	80	55	40	40
IL	390	400	340	320	390
IN	380	270	320	310	330
IA	900	980	800	680	1,250
KS	60	70	70	70	80
KY	50	50	35	35	35
MI	100	110	100	100	100
MN	210	300	320	360	440
MO	130	180	160	110	170
NE	210	205	200	190	195
NC	320	420	600	630	650
OH	40	60	70	90	100
OK	10	15	25	40	50
PA	100	120	105	100	115
SD	60	60	70	60	70
WI	45	45	40	50	55
Oth Sts ²	230	230	220	220	200
US	3,390	3,670	3,615	3,490	4,355
	5,000+ Head				
	<i>Number</i>	<i>Number</i>	<i>Number</i>	<i>Number</i>	<i>Number</i>
AR	30	35	35	40	45
GA	20	20	25	30	30
IL	70	80	90	100	120
IN	80	90	100	110	110
IA	100	120	150	220	300
KS	30	30	30	30	40
KY	10	10	15	15	15
MI	30	30	30	30	30
MN	90	100	130	140	160
MO	20	20	20	50	60
NE	40	45	50	60	75
NC	300	400	500	520	570
OH	10	10	10	20	20
OK	15	15	15	20	30
PA	20	20	25	30	35
SD	40	50	50	50	60
WI	5	5	10	10	5
Oth Sts ²	80	90	100	110	120
US	990	1,170	1,385	1,585	1,825

¹ An operation is any place having one or more hogs and pigs on hand at any time during the year. The U.S. total shows the actual number of operations in each size group.

² Individual State estimates not available for the 33 other States.

**Hogs and Pigs: Percent of Inventory by Size Group,
State, and United States, 1993-97 ¹**

State	Inventory on Operations Having:				
	1-99 Head				
	1993	1994	1995	1996	1997
	<i>Percent</i>	<i>Percent</i>	<i>Percent</i>	<i>Percent</i>	<i>Percent</i>
AR	3.0	4.0	3.0	2.0	2.0
GA	11.0	11.0	7.0	4.0	4.0
IL	3.0	2.5	2.5	2.0	2.0
IN	4.0	4.0	4.0	3.0	2.0
IA	2.5	2.0	1.5	1.5	1.0
KS	7.5	6.0	5.0	4.5	2.5
KY	12.0	9.0	8.0	5.0	4.0
MI	8.0	7.0	6.5	5.5	4.0
MN	3.0	3.0	2.0	2.0	1.5
MO	6.0	5.0	4.0	2.5	2.0
NE	4.0	3.5	3.0	2.5	2.0
NC	1.5	1.0	1.0	0.5	0.5
OH	17.0	12.0	12.0	9.0	7.0
OK	15.0	11.0	6.0	3.0	2.0
PA	7.0	6.0	5.0	5.0	4.0
SD	4.5	4.0	4.0	3.0	2.5
WI	10.0	10.0	10.0	9.0	8.0
Oth Sts ²	11.0	10.0	10.0	9.0	6.5
US	5.0	4.0	3.5	3.0	2.0
	100-499 Head				
	<i>Percent</i>	<i>Percent</i>	<i>Percent</i>	<i>Percent</i>	<i>Percent</i>
AR	5.0	4.0	5.0	4.0	2.0
GA	23.0	22.0	18.0	16.0	10.0
IL	20.0	18.5	19.5	19.0	14.0
IN	20.0	21.0	19.0	16.0	14.0
IA	25.0	22.0	22.0	18.0	12.0
KS	27.0	26.0	22.0	18.0	12.5
KY	24.0	23.0	22.0	16.0	13.0
MI	20.0	20.0	15.0	14.0	12.0
MN	24.0	21.0	18.0	15.0	13.0
MO	27.0	23.0	17.0	12.0	10.5
NE	29.0	28.5	26.0	24.5	19.5
NC	2.5	2.0	1.0	0.5	0.5
OH	30.0	35.0	30.0	28.0	22.0
OK	20.0	10.0	6.0	3.0	2.0
PA	18.0	17.0	16.0	15.0	11.0
SD	36.0	36.5	35.0	26.0	22.0
WI	38.0	34.0	31.0	28.0	27.0
Oth Sts ²	18.0	15.0	12.0	12.0	9.5
US	22.5	20.5	18.0	15.0	11.0

See footnotes at end of table.

--continued

**Hogs and Pigs: Percent of Inventory by Size Group,
State, and United States, 1993-97 ¹ (continued)**

State	Inventory on Operations Having:				
	500-999 Head				
	1993	1994	1995	1996	1997
	<i>Percent</i>	<i>Percent</i>	<i>Percent</i>	<i>Percent</i>	<i>Percent</i>
AR	6.0	6.0	6.0	6.0	7.0
GA	15.0	14.0	12.0	11.0	9.0
IL	24.0	24.0	21.0	19.0	17.0
IN	22.0	19.0	16.0	17.0	15.0
IA	30.0	28.0	26.0	23.0	17.5
KS	18.0	15.0	15.0	15.0	10.0
KY	17.0	19.0	18.0	18.0	16.0
MI	12.0	12.0	12.5	9.5	11.0
MN	25.0	22.0	20.0	19.0	15.5
MO	21.0	18.0	16.0	12.0	9.5
NE	24.0	22.0	22.0	19.0	19.5
NC	4.0	3.0	2.0	1.5	1.0
OH	24.0	18.0	20.0	21.0	22.0
OK	5.5	3.5	2.0	2.0	2.0
PA	17.0	17.0	16.0	15.0	12.0
SD	20.5	22.0	20.0	20.0	16.0
WI	23.0	24.0	19.0	18.0	21.0
Oth Sts ²	10.0	9.0	8.0	8.0	6.0
US	21.5	19.5	17.0	15.0	12.0
	1,000-1,999 Head				
	<i>Percent</i>	<i>Percent</i>	<i>Percent</i>	<i>Percent</i>	<i>Percent</i>
AR	18.0	17.0	16.0	15.0	15.0
GA	13.0	14.0	13.0	14.0	11.0
IL	21.0	20.0	21.0	19.0	19.0
IN	18.0	19.0	18.0	18.0	18.0
IA	22.0	24.0	22.0	21.0	20.0
KS	11.5	14.0	14.0	9.5	9.0
KY	18.0	18.0	18.0	16.0	18.0
MI	18.0	16.0	14.0	18.0	18.0
MN	21.0	21.0	22.0	22.0	20.0
MO	17.0	18.0	13.0	9.5	10.0
NE	15.0	17.0	18.5	18.5	17.5
NC	9.0	8.0	6.0	5.0	4.0
OH	19.0	21.0	19.0	15.0	19.0
OK	10.5	10.0	5.5	5.5	4.0
PA	21.0	21.0	20.0	19.0	17.0
SD	14.0	13.5	11.0	11.0	13.0
WI	14.0	16.0	19.0	20.0	20.0
Oth Sts ²	10.0	10.0	8.0	12.0	8.5
US	17.5	18.0	17.0	16.0	14.5

See footnotes at end of table.

--continued

**Hogs and Pigs: Percent of Inventory by Size Group,
State, and United States, 1993-97 ¹**

State	Inventory on Operations Having:				
	2,000-4,999 Head				
	1993	1994	1995	1996	1997
	<i>Percent</i>	<i>Percent</i>	<i>Percent</i>	<i>Percent</i>	<i>Percent</i>
AR	30.0	30.0	30.0	31.0	31.0
GA	21.0	21.0	21.0	18.0	22.0
IL	20.0	21.0	20.0	21.0	23.0
IN	18.0	18.0	21.0	21.0	24.0
IA	15.5	17.5	14.5	15.5	23.5
KS	12.0	14.0	18.0	14.0	14.0
KY	18.0	18.0	14.0	19.0	20.0
MI	20.0	22.0	22.0	23.0	25.0
MN	13.0	18.0	17.0	18.0	20.0
MO	12.0	12.0	11.0	7.0	14.0
NE	14.0	14.0	13.5	13.5	15.5
NC	20.0	20.0	24.0	25.0	22.0
OH	6.0	10.0	13.0	17.0	18.0
OK	9.0	10.5	8.5	8.5	8.0
PA	22.0	24.0	24.0	23.0	29.0
SD	9.5	9.0	10.0	11.0	12.5
WI	10.0	11.0	13.0	17.0	18.0
Oth Sts ²	10.0	11.0	12.0	12.0	13.5
US	15.5	17.0	17.0	17.0	20.5
	5,000+ Head				
	<i>Percent</i>	<i>Percent</i>	<i>Percent</i>	<i>Percent</i>	<i>Percent</i>
AR	38.0	39.0	40.0	42.0	43.0
GA	17.0	18.0	29.0	37.0	44.0
IL	12.0	14.0	16.0	20.0	25.0
IN	18.0	19.0	22.0	25.0	27.0
IA	5.0	6.5	14.0	21.0	26.0
KS	24.0	25.0	26.0	39.0	52.0
KY	11.0	13.0	20.0	26.0	29.0
MI	22.0	23.0	30.0	30.0	30.0
MN	14.0	15.0	21.0	24.0	30.0
MO	17.0	24.0	39.0	57.0	54.0
NE	14.0	15.0	17.0	22.0	26.0
NC	63.0	66.0	66.0	67.5	72.0
OH	4.0	4.0	6.0	10.0	12.0
OK	40.0	55.0	72.0	78.0	82.0
PA	15.0	15.0	19.0	23.0	27.0
SD	15.5	15.0	20.0	29.0	34.0
WI	5.0	5.0	8.0	8.0	6.0
Oth Sts ²	41.0	45.0	50.0	47.0	56.0
US	18.0	21.0	27.5	34.0	40.0

¹ An operation is any place having one or more hogs and pigs on hand at any time during the year.

² Individual State estimates not available for the 33 other States.

Index

Page

Annual Farrowings, Number of Sows, Pigs Per Litter, and Pig Crop, December-November, U.S.	33
Farrowings, Number of Sows, Pigs Per Litter, and Pig Crop, U.S.	5
Farrowings, Number of Sows, Pigs Per Litter, and Pig Crop, December-February, Quarterly States	25
Farrowings, Number of Sows, Pigs Per Litter, and Pig Crop, June-August, Quarterly States	29
Farrowings, Number of Sows, Pigs Per Litter, and Pig Crop, March-May, Quarterly States	27
Farrowings, Number of Sows, Pigs Per Litter, and Pig Crop, September-November, Quarterly States	31
Hogs and Pigs Inventory Number, by Quarter, U.S.	4
Inventory, Total and Breeding, Market Hogs, and Market Hogs, by Weight Groups, Quarterly States, December 1	6
Inventory, Total and Breeding, Market Hogs, and Market Hogs, by Weight Groups, Quarterly States, June 1	17
Inventory, Total and Breeding, Market Hogs, and Market Hogs, by Weight Groups, Quarterly States, March 1	13
Inventory, Total and Breeding, Market Hogs, and Market Hogs, by Weight Groups, Quarterly States, September 1	21
Number of Operations with Hogs, U.S.	36
Number of Operations by Size Group, Quarterly States	37
Percent of Inventory by Size Group, Quarterly States	40