

**DAILY DIRECT HOGS PLANT DELIVERED as of 1:30 PM**

negotiated Barrow and Gilts:	Carcass Base Price	Live Price
<b><u>NATIONAL - AMS 2675/LM HG203:</u></b>		
Range:	\$77.00 - \$83.00	\$54.00 - \$64.90
Weighted Average:	\$79.32	\$60.86
Change from Prior Day:	2.16 lower	no comparison
Receipts:	6,367	2,388

**IOWA/MINNESOTA - AMS 2675/LM HG206:**

Weighted Average:	\$79.86	*Price not reported due to confidentiality*
-------------------	---------	---

**WESTERN CORNBELT - AMS 2675/LM HG212:**

Weighted Average:	\$79.58	*Price not reported due to confidentiality*
-------------------	---------	---

**EASTERN CORNBELT - AMS 2675/LM HG210:**

Weighted Average:	*Price not reported due to confidentiality*	*Price not reported due to confidentiality*
-------------------	---	---

**NATIONAL DAILY PORK REPORT FOB PLANT- AMS 2498/LM PK602:**

Carcass Cutout Values	102.89	Chg:	(-2.52)
Primal Loin	110.88		(-1.14)
Primal Butt	109.08		(-3.63)
Primal Picnic	80.06		0.53
Primal Rib	129.45		5.90
Primal Ham	68.87		(-11.47)
Primal Belly	172.15		6.71
Total Loads	317.20		
Pork Cuts	293.23	Lds	
Trim/Process Pork	23.96	Lds	

**DAILY HOG SLAUGHTER UNDER FIS - AMS 3208/SJ LS710**

Today (est)	478,000
Week Ago (est)	471,000
Year Ago (act)	479,000

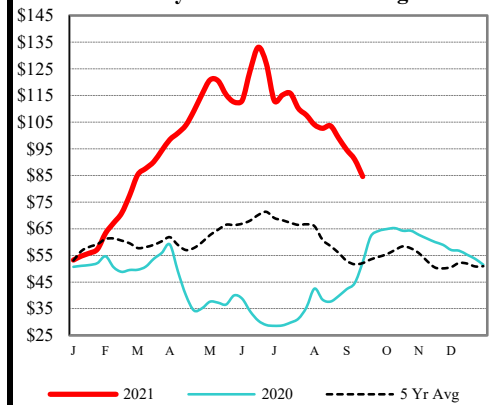
CME Lean Hog CLOSE	High	Low	Change	Settle
OCT	85.83	84.55	(0.75)	84.98
DEC	75.23	71.50	(0.83)	74.23
FEB	78.40	74.78	(1.18)	77.05
APR	81.90	78.50	(1.33)	80.58

**CME Lean Hog Delayed Futures**

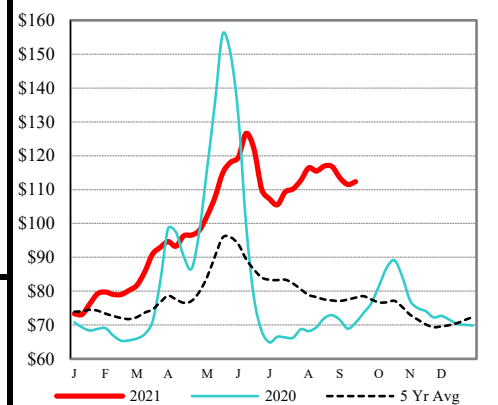
**ESTIMATED WEEKLY PORK PRODUCTION UNDER FIS - AMS 3209/SJ LS712**

Week Ending	Hog Slaughter	Million Pounds	Live Weight	Dressed Weight
09/18/21	2,537,000	528.9	280	209
09/11/21	2,241,000	467.5	280	209
2021 YTD	90,687,000	19442.4		
2020 YTD	92,337,000	19793.8		

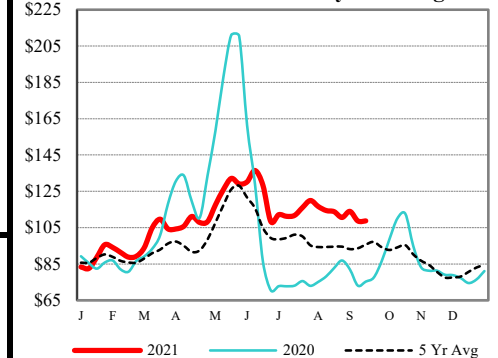
Weekly Ia-Mn P.M. Wtd Avg



Weekly Loin Primal Value



1/4" Trim Loin Weekly Wtd Avg



Pork Cutout vs Avg Net Price

